



Update on Early Care and Education Pre & Post COVID-19

Presentation to Interim House Education Committee

Sara Mickelson, ELD Chief of Programs

David Mandell, Chief of Policy and Research

December 15th, 2020



ELD's Role in Early Care and Education (ECE)

- Administer ECE Programs (Preschool Promise, Oregon Pre-K, Baby Promise, Early Childhood Equity Fund, Early Learning Hubs, Relief Nurseries, Healthy Families Oregon, Spark, CCR&Rs, etc.)
- License and regulate child care programs
- Support ECE program quality and provide Technical Assistance
- Provide opportunities for professional development of ECE workforce
- Support Transition into Kindergarten from Early Learning Programs or First Into School



What is the Early Care & Education Sector?

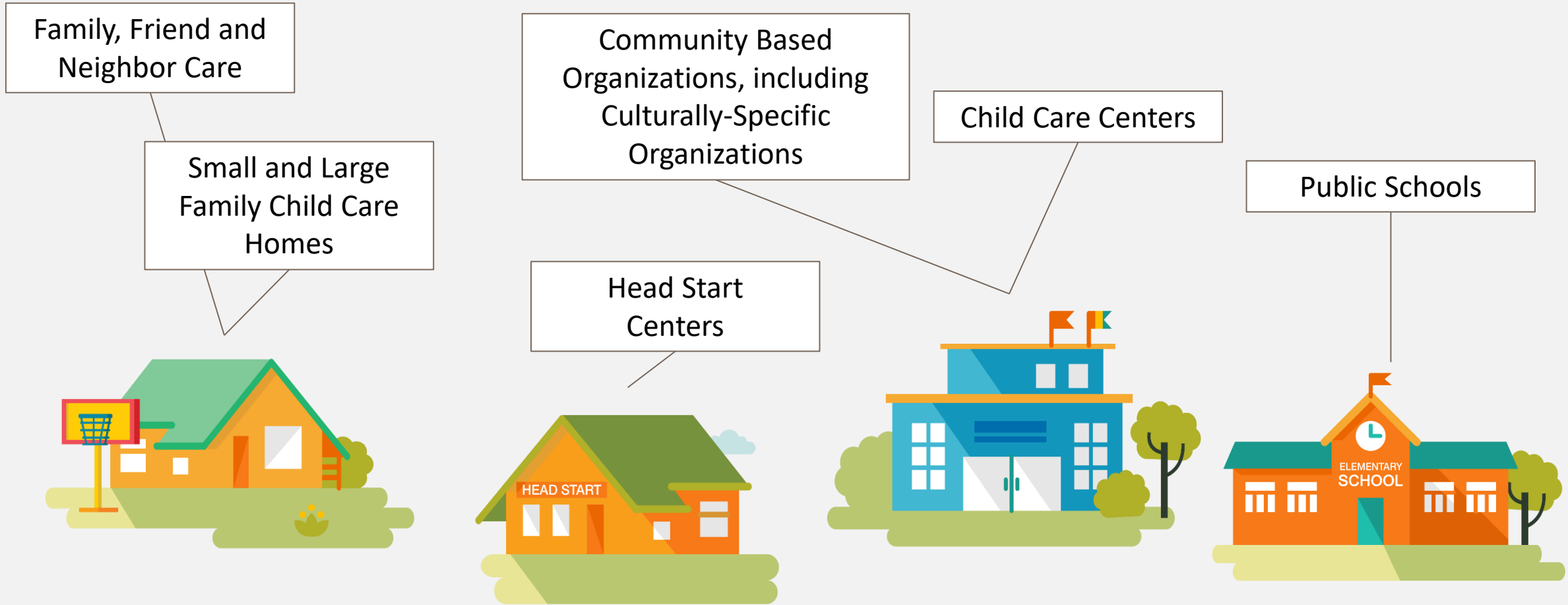
Led by knowledgeable, skilled, well-compensated **early childhood educators**



Provides educational **environments and experiences** that promote children's learning and development



Supports children's **families** as their lifelong teacher(s)



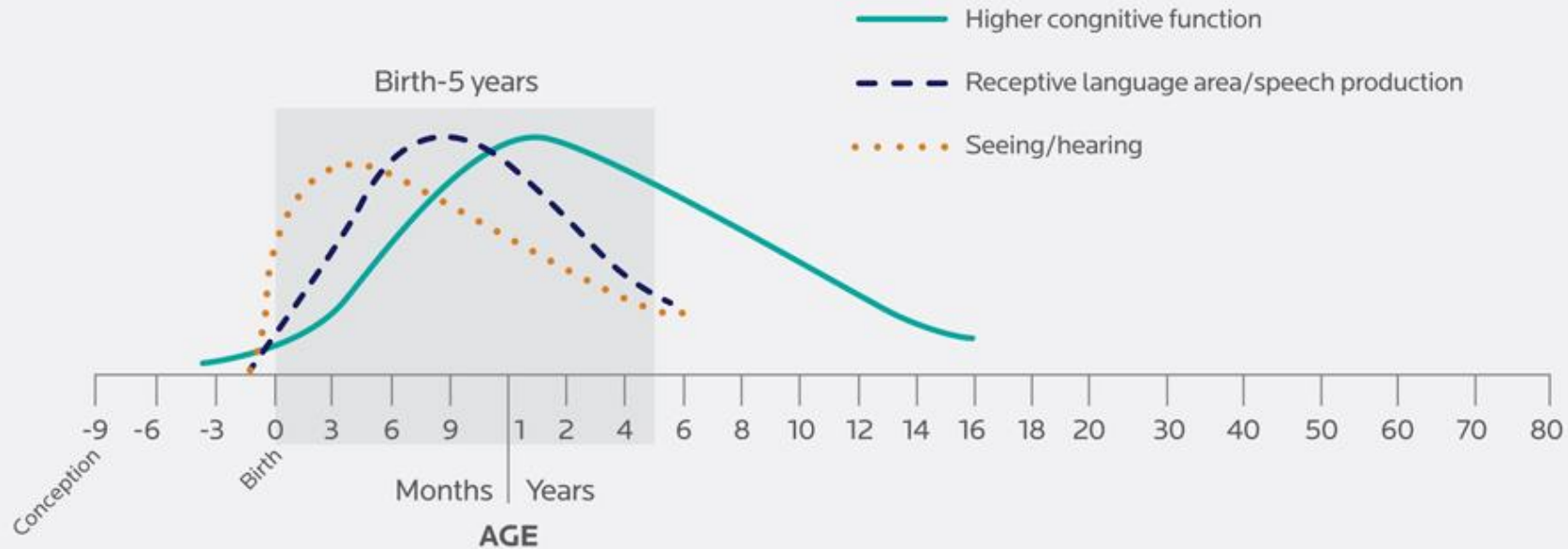
ECE is delivered across a variety of settings.
This is why it is known as “**mixed-delivery**” system.



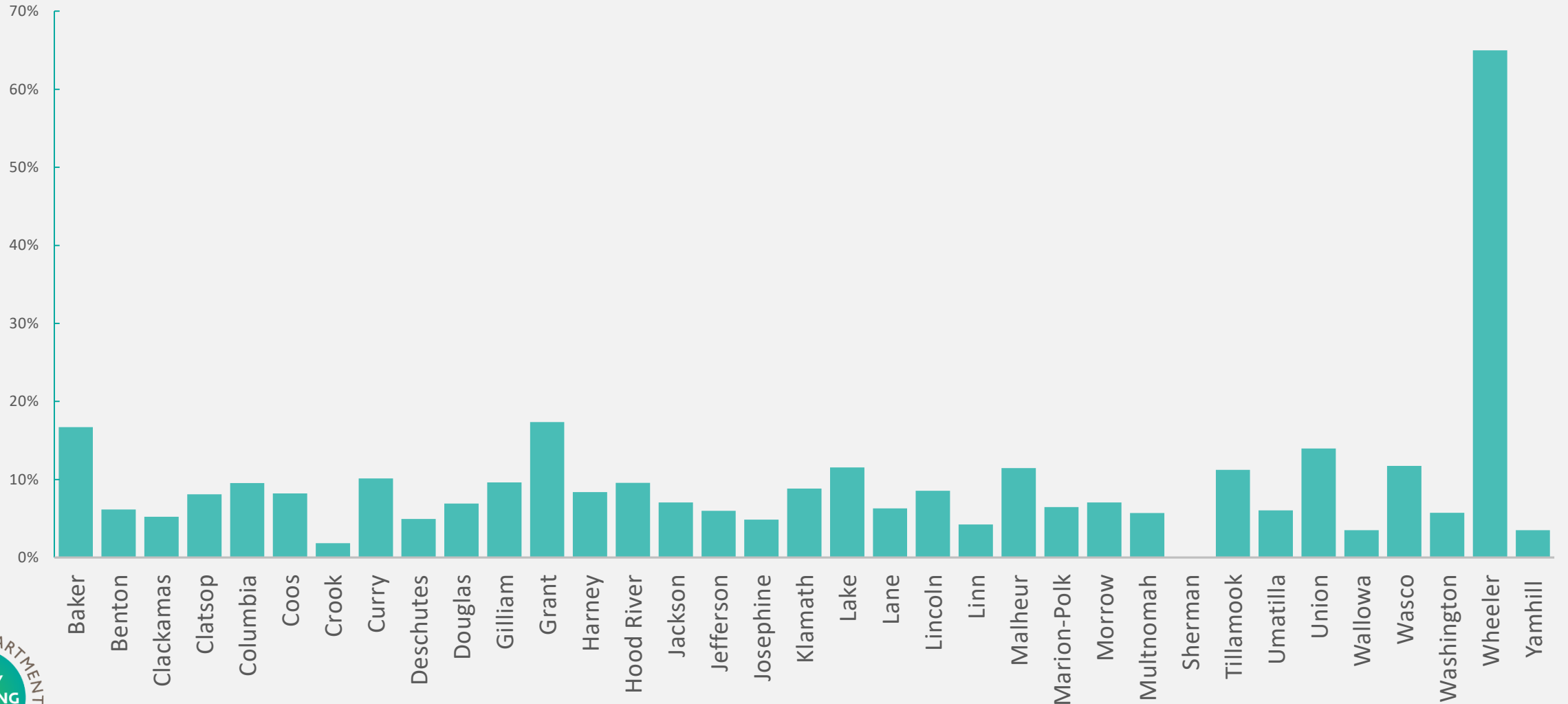
All ECE Settings are Early Learning Settings

The science of child development underscores the importance of the first 2,000 days of childhood.

Figure 1. Synapse formation in the developing brain^{vii}

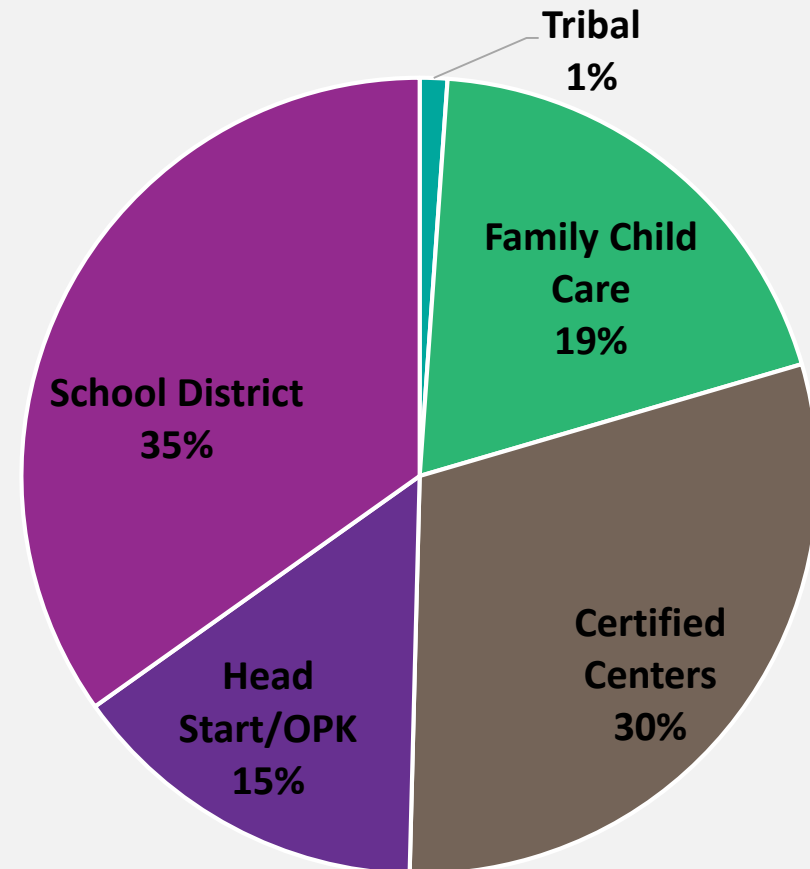


PSP Objective: Serve >10% of Eligible Children



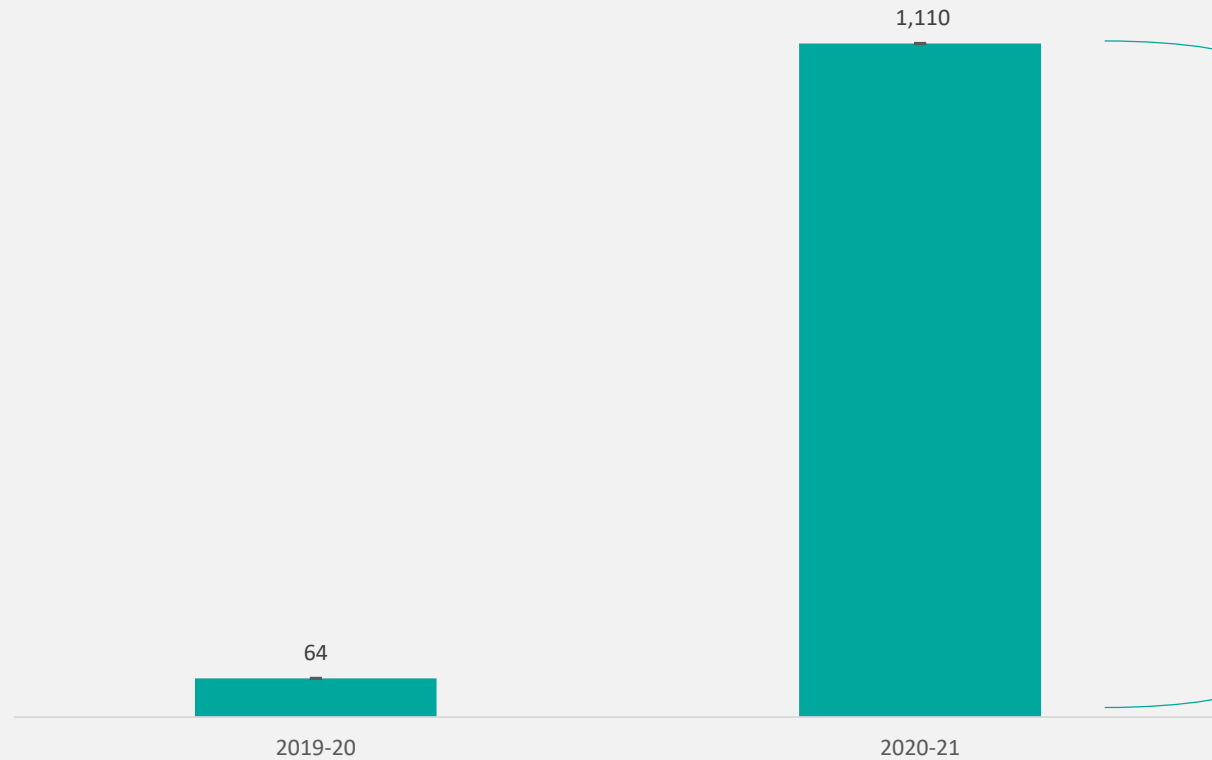
PSP Distribution Across Provider Type

- Mixed-delivery – a diverse array of types of providers
- Preschool Promise continues to be delivered across types of providers across state

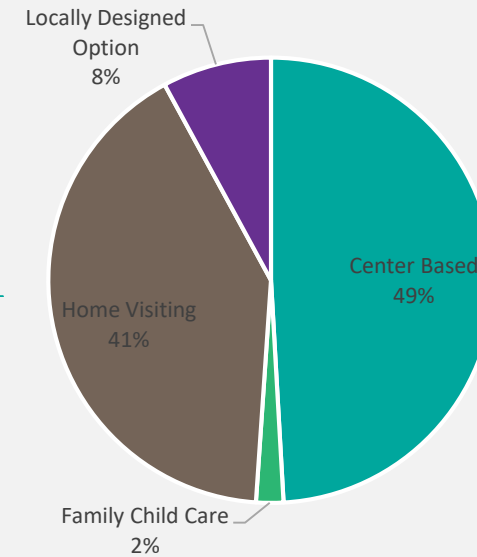


OPK Objective: Expand PN-3 Services by ~1,200

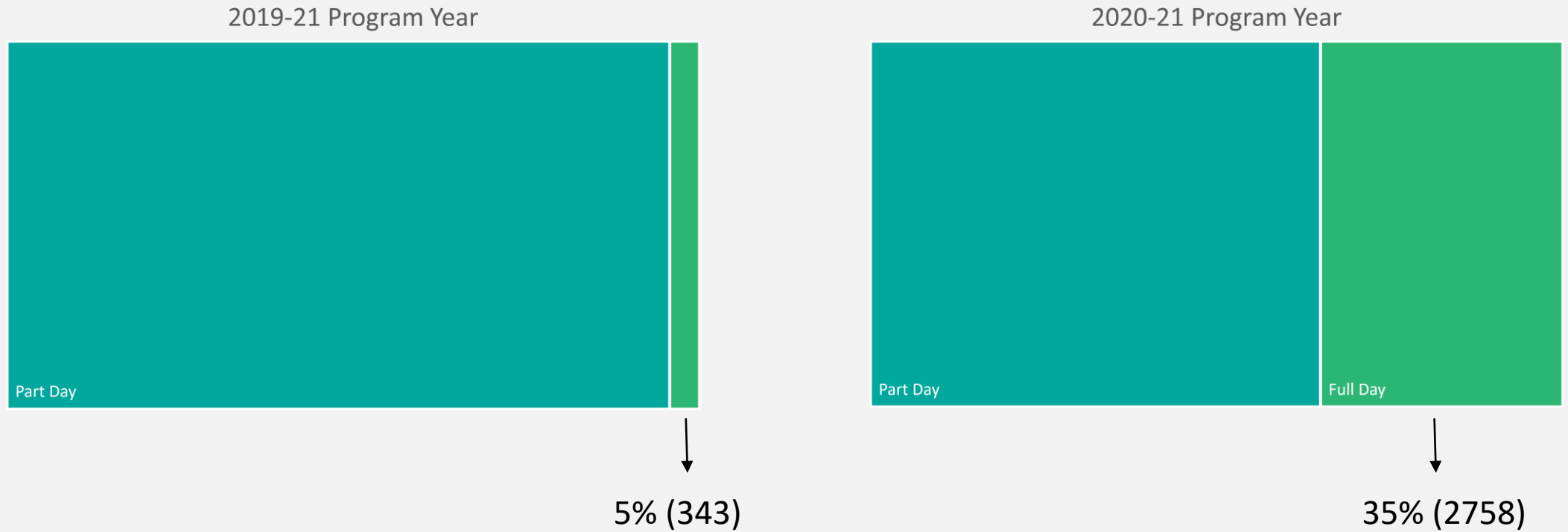
OPK Pre-natal to 3 Slots



PN-3 Service Models

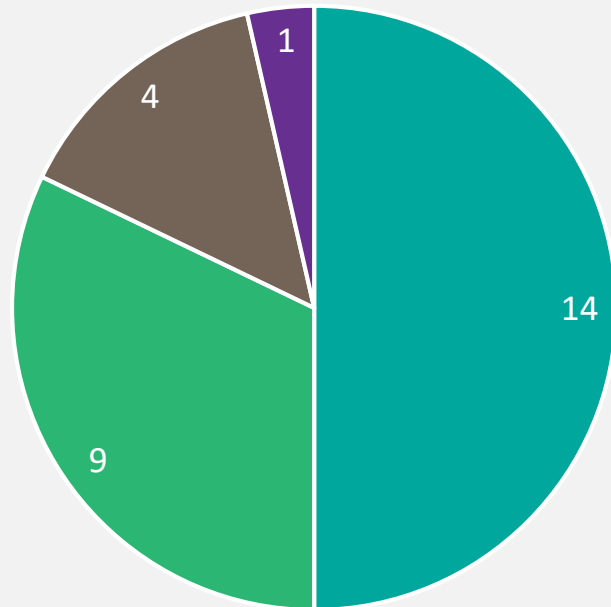


OPK Objective: Convert >30% of Preschool Slots to Full-Day



OPK Objective: Increase Salaries/Staff Retention

Programs Meeting Salary Minimums

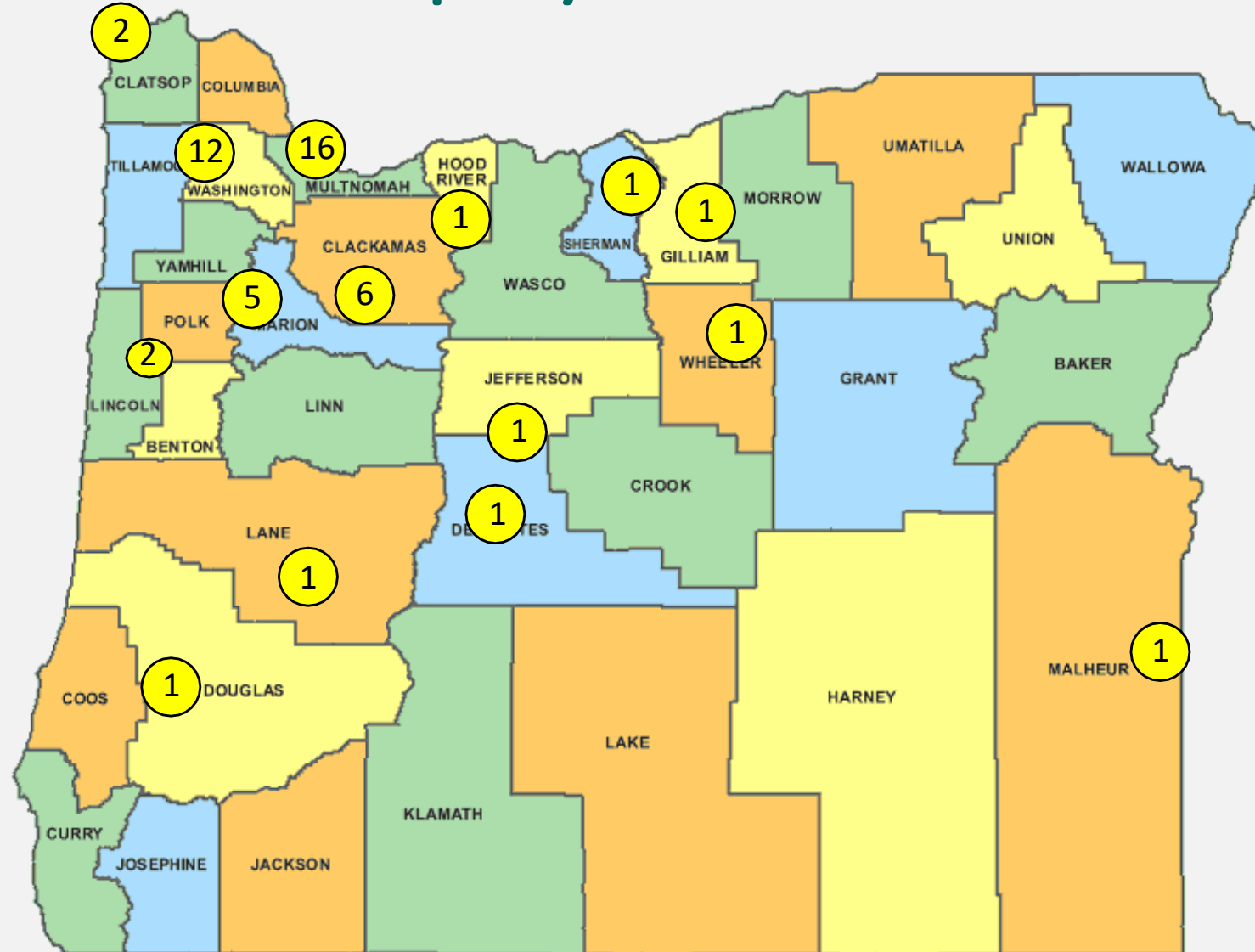


■ All ■ Most (>50%) ■ Some (<50%) ■ None

Applicants submitted salary structure plans to meet newly established salary guidelines for Lead teachers and Teacher assistants.

- **'All'** (100%) of the steps in the salary structure submitted met salary guidelines.
- **'Most'** (more than 50%) of the steps in the salary structure submitted met salary guidelines.
- **'Some'** (50% or less) of the steps in the salary structure submitted met salary guidelines.
- **'None'** of the steps in the salary structure submitted met salary guidelines.

Early Childhood Equity Fund – Statewide Reach

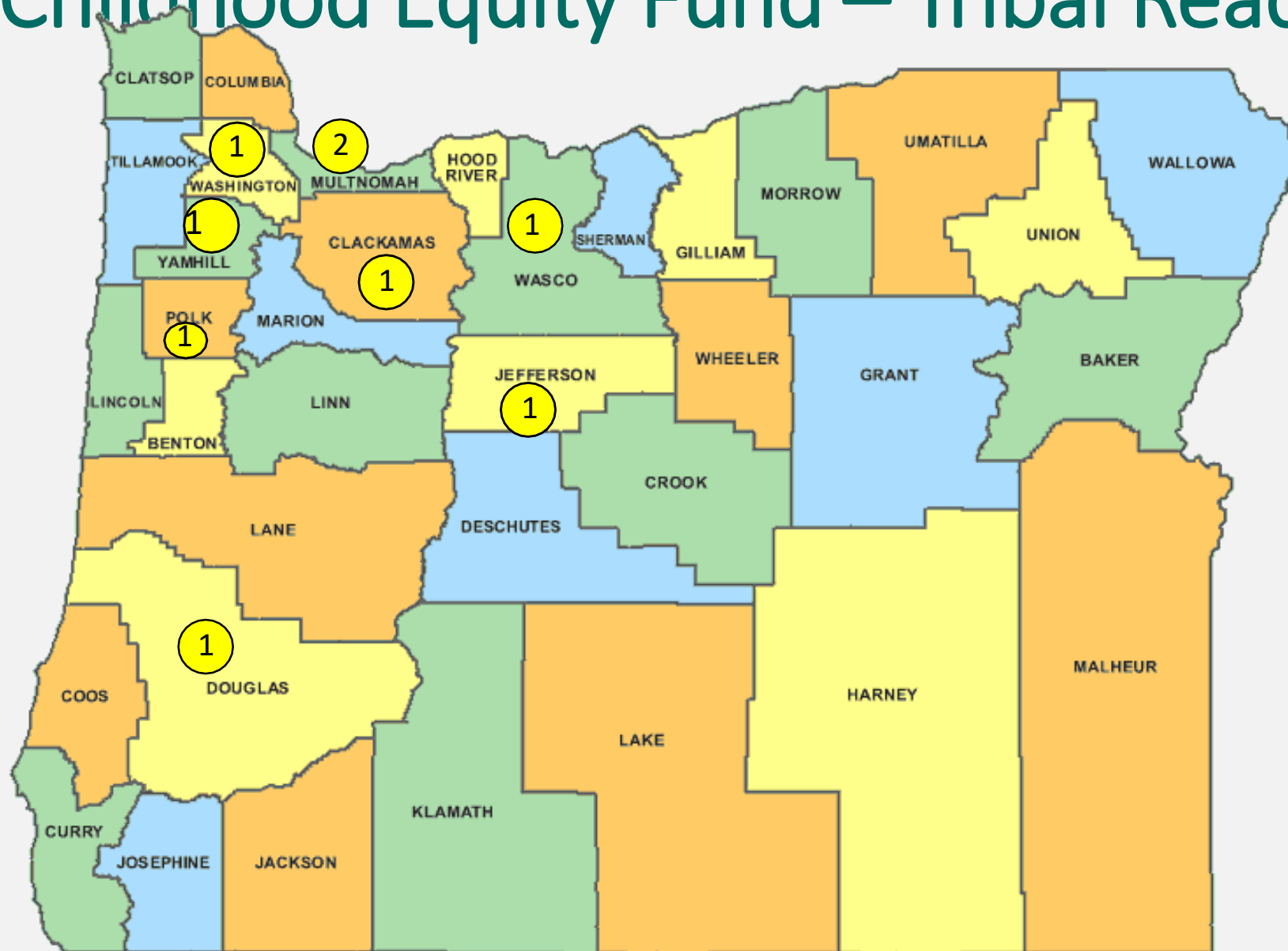


© 2017 WaterproofPaper.com



* The number represents how many organizations will be providing services in that county.

Early Childhood Equity Fund – Tribal Reach



* The number represents the location of the Tribal Nations funded through the Early Childhood Equity Fund.



Timeline of Emergency Child Care (ECC)

- **March 8:** Governor Brown declares State of Emergency
- **March 23:** Executive Order 20-12 closed child care Mar 25 – Apr. 28
 - Established Emergency Child Care
 - Prioritized child care for essential workers
- **April 23:** Executive Order 20-19 extending closure of child care
- **April 24:** 2nd Temporary Order
- **April 30:** Phase 1 Emergency Child Care Grants
- **May 16:** Updated Statewide Standards for Child Care Operations
- **June 8:** Phase 2 Emergency Child Care Grants
- **August 14:** Release of the revised Guidelines
- **September 3:** Supplemental and Opportunity Grants
- **September 14:** Supplies Disbursement
- **November 2:** Phase 3 Emergency Child Care Grants
- **November 16:** Phase 4 Emergency Child Care Grants





ELD Grants and Federal Relief Funding

- Total Amount of Grant Disbursement for ECC Grants: \$75,664,897 (includes CRF and CARES Act funding) and with more grant funds being disbursed daily.
- Total Number of Providers that received a grant: 3,921 providers
 - Additionally, ODHS disbursed Employment Related Day Care subsidy payments to roughly an additional 1,250 providers in Phase 3 and 4.
- Care Packages sent (containing masks, gloves, disinfectant wipes, baby wipes, and a thermometer): 3,090



Emergency Supplies For Providers

- To ensure that child care providers had access to personal protective equipment (PPE) and cleaning supplies for safe operations, ELD provided free supplies.
- Gov. Brown with the Emergency Board allocated \$1.3M for supply procurement from GEER funds.
- ELD partnered with Business Oregon to create a portal for providers to apply for supplies.

A screenshot of a website titled "Oregon FREE SUPPLIES FOR SMALL BUSINESS AND CHILD CARE PROVIDERS". The page features a header with the word "Oregon" in a large font and the subtitle "FREE SUPPLIES FOR SMALL BUSINESS AND CHILD CARE PROVIDERS". Below the header is a section titled "Supplies for Small Businesses & Child Care Providers". The text in this section states: "The Governor's office in partnership with the Oregon Legislature's Emergency Board, allocated \$10 Million from the federal CARES Act funding for the purchase of supplies including masks and gloves for small business. The State of Oregon is fulfilling orders at no charge until resources are depleted." A note below this text reads: "Due to impacts from wildfires across the region there may be a delay in shipments. Orders will continue to be processed. Thank you for your patience." At the bottom of the page, there are two buttons: "Request Supplies" for "SMALL BUSINESSES" and "Request Supplies" for "CHILD CARE PROVIDERS".



COVID-19 Response from Publicly Funded ECE Programs

- Providers are able to request waivers for virtual and hybrid options
- More than half of providers are delivering in-person in Preschool Promise; less for Oregon Prekindergarten and Equity Fund
- Decisions made in concert with needs and requests of families

ERDC Response to COVID-19



Employment Related Day Care (ERDC) Policy Changes

- Eliminated Copays for all families
- Increase income eligibility to 85% SMI/250% FPL
- Expanded absence & closure payment policy
- New guidance on use of ERDC during distance learning
- \$13.2M in federal CARES Act allocated for these COVID responses



Legislative Concepts for the 2021 Session

LC 610: Preschool Promise & Baby Promise Statute Alignment—Technical fix to drafting error in the community plans portion of the Preschool Promise statutes codified in HB 2025 (2019).

LC 611: Update to Kindergarten Readiness Partnership and Innovation Program—Narrows the scope for the use of program grant funds to better target resources to kindergarten transition, engaging families of a child (0-5 years) in learning and development and investing in priority populations/geographic areas identified in Early Learning Hub plans. LC 611 codifies Early Learning Hubs as a pass through entity for grant funds.

LC 613: License exempt child care background check process—Transfers the Department of Human Services license-exempt child care background check process for subsidized care to the Office of Child Care in the Early Learning Division to enroll license exempt providers in the Central Background Registry.

LC 618: Recorded Programs Oversight—Brings preschool and school-age recorded programs under Office of Child Care oversight through Central Background Registry enrollment and health & safety inspections.

LC 619: Create Tribal Learning Hubs—Creates a Tribal Early Learning Hub and Tribal Early Learning Hub Advisory Committee that will serve Oregon's nine federally recognized tribes.

LC 626: Reforming Spark Program and Tiered Reimbursement—Technical fix to Spark statutes to give latitude in designing a more effective quality rating and improvement system to increase provider participation and families' use of the resource in finding quality early care and education programs.