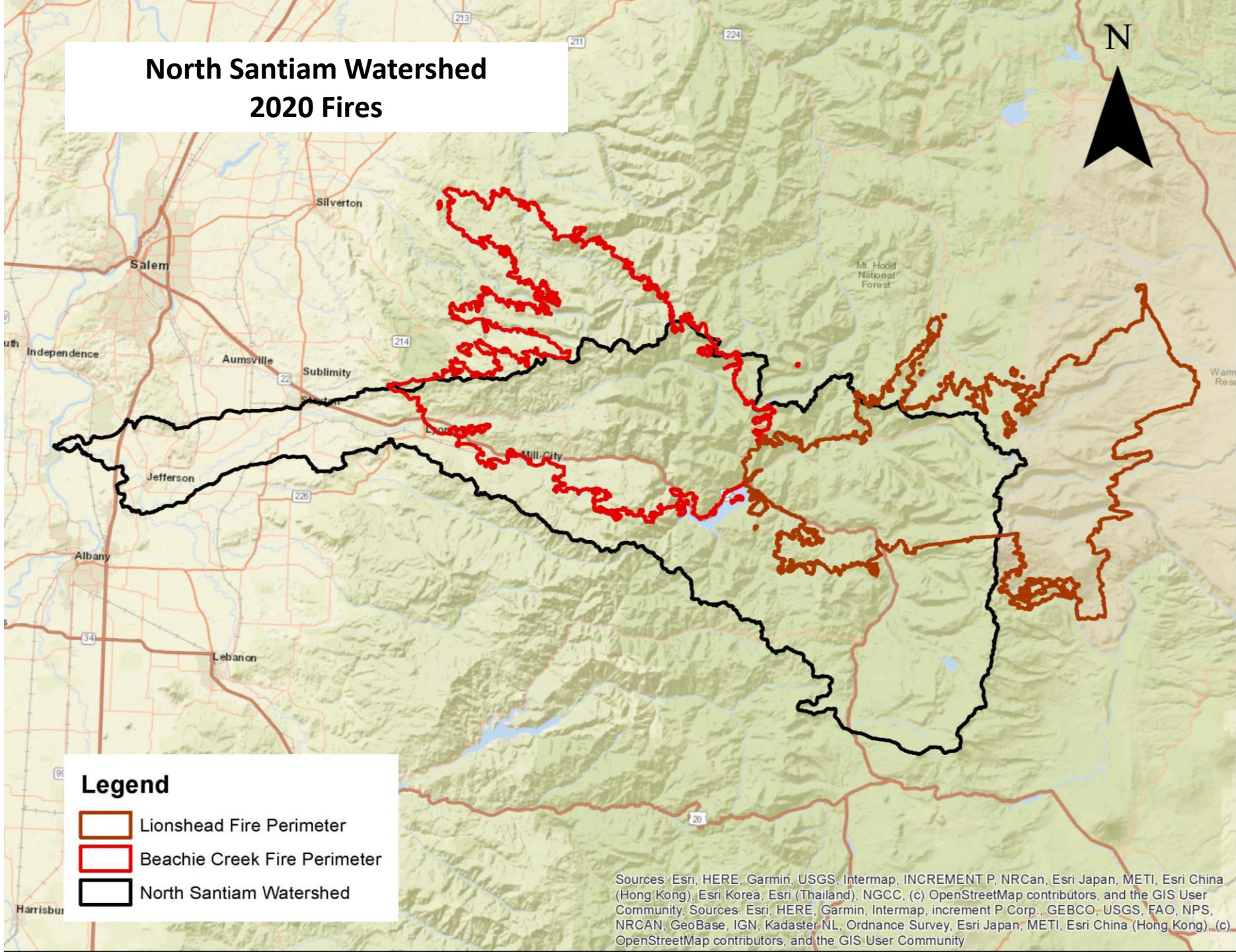






NORTH SANTIAM  
WATERSHED COUNCIL

## North Santiam Watershed 2020 Fires



### Legend

-  Lionshead Fire Perimeter
-  Beachie Creek Fire Perimeter
-  North Santiam Watershed

Sources: Esri, HERE, Garmin, USGS, Intermap, INCREMENT P, NRCan, Esri Japan, METI, Esri China (Hong Kong), Esri Korea, Esri (Thailand), NGCC, (c) OpenStreetMap contributors, and the GIS User Community; Sources: Esri, HERE, Garmin, Intermap, increment P Corp., GEBCO, USGS, FAO, NPS, NRCAN, GeoBase, IGN, Kadaster NL, Ordnance Survey, Esri Japan, METI, Esri China (Hong Kong), (c) OpenStreetMap contributors, and the GIS User Community



# FIRE & WHAT FOLLOWED TIMELINE



- September 7 – 10, 2020: Beachie Creek & Lionshead Fires hit canyon.

Access closed! Life and Safety First!!!  
Evacuation, Red Cross – Human basic needs.



- September 14, 2020: Coordination calls began between natural resource and infrastructure staff from the state, counties, cities, local entities.

## NATURAL RESOURCE LENS: HUGE DEVASTATION

### BIGGEST CONCERN

**Burned hazardous materials, hazard trees, erosion of sediment and toxins getting into the river**



- September 16, 2020: Water quality calls with USGS, Utilities, ODEQ, OSU Researchers...
- September 17, 2020: River water sampling began – first rain event.





# TIMELINE CONTINUED...

- September 23, 2020: North Santiam Watershed Council held first coordination call with all regional partners.
  - What can we do to help landowners?
  - NRCS, OWEB, OSU Extension pulled together informational webinars.

Site assessments, situational awareness, triage, hazard trees, erosion control methods, grass seed, programs available.

Site Visits: Oregon Dept. of Forestry, Soil & Water Conservation Districts, Watershed Council staff, OSU Extension

- October 4, 2020: In North Santiam, weed free straw obtained. Staged in Mill City.
- **Amazing local volunteers started delivering and helping spread straw bales to landowners.**







# Post Fire Response *After-Action* Review Needed

- Scope and scale beyond anything anyone experienced.
- Many jurisdictional boundaries crossed (Fed, Tribal, State, County, City, Private).
- So many people impacted... including first responders and natural resource professionals.

**Existing Relationships Were Critical to Effective Response!!!**

**POST FIRE RESPONSE ASSESSMENT NEEDED FOR EACH FIRE**

**What worked?**

**What did not?**

**Why?**

**How can we do better?**

