

SRF 7: Natural and Cultural Resources Recovery (NCRR) Task Force

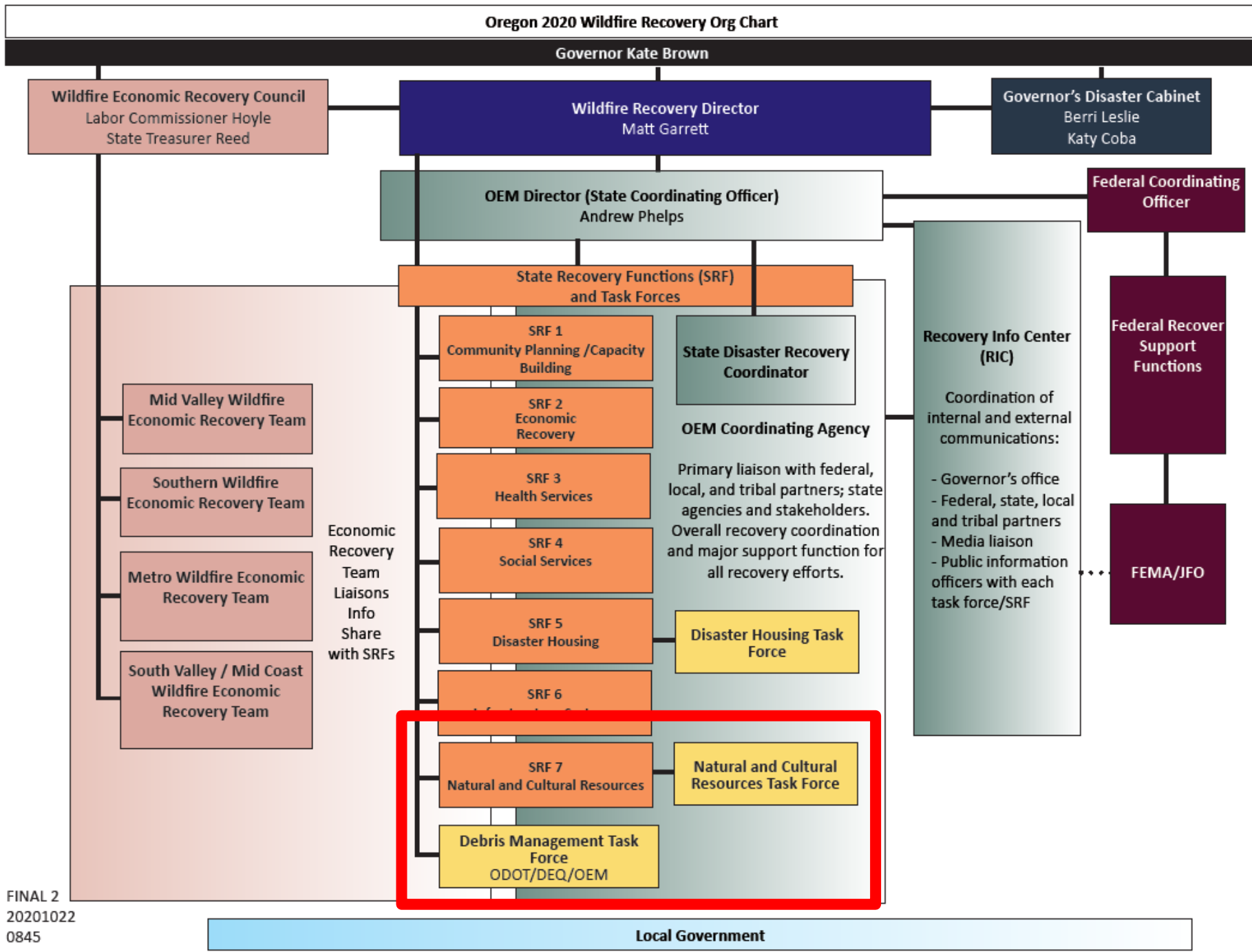
HOUSE COMMITTEE ON WATER

DECEMBER 15 2020 1030 AM

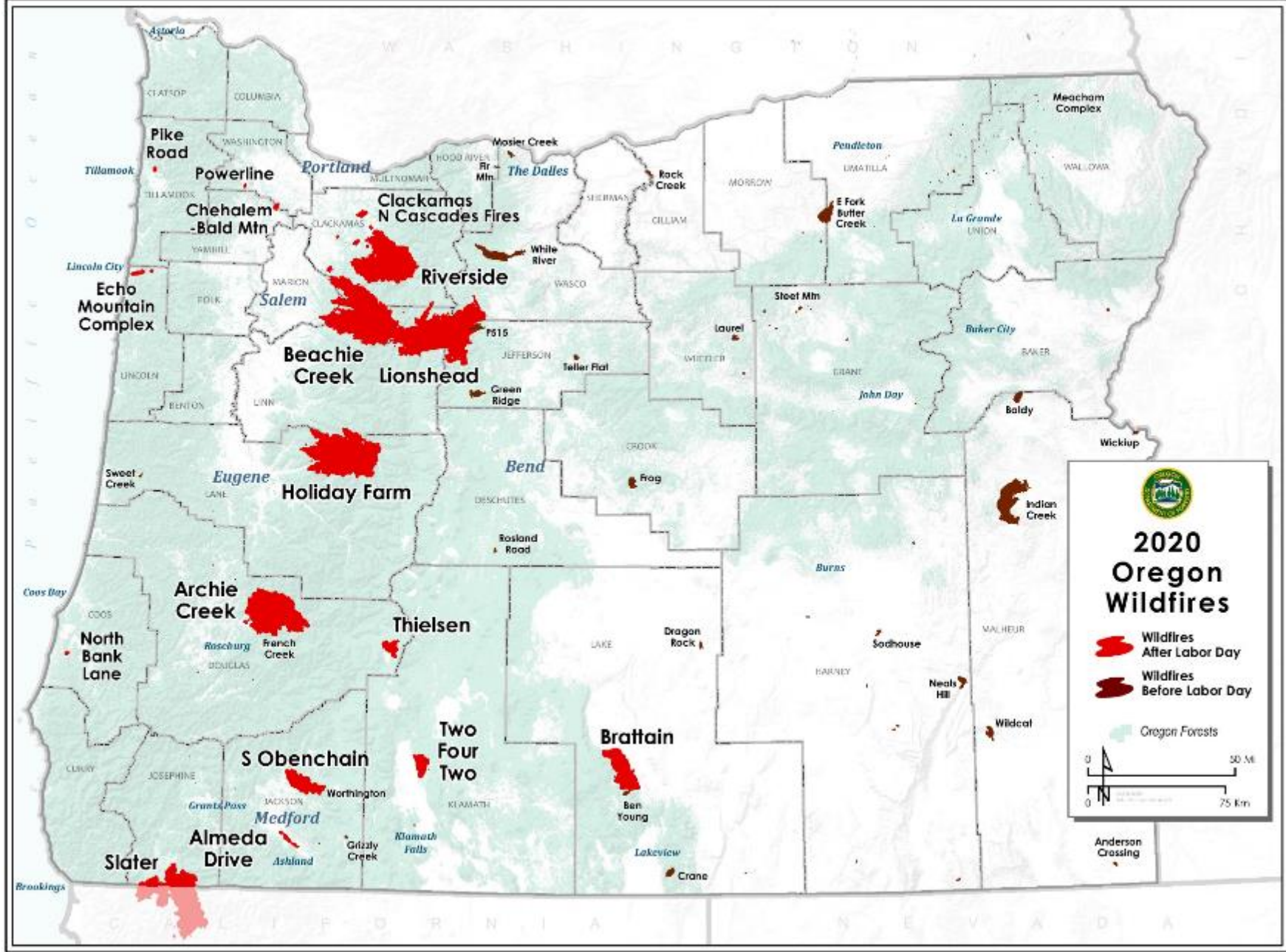
KYLE ABRAHAM (ODF)
KEITH ANDERSEN (DEQ)
RENEE DAVIS (OWEB)
JOSH SEEDS (DEQ)



Oregon 2020 Wildfire Recovery Org Chart



FINAL 2
20201022
0845







Watershed Impacts

Potential Threats to Water Quality

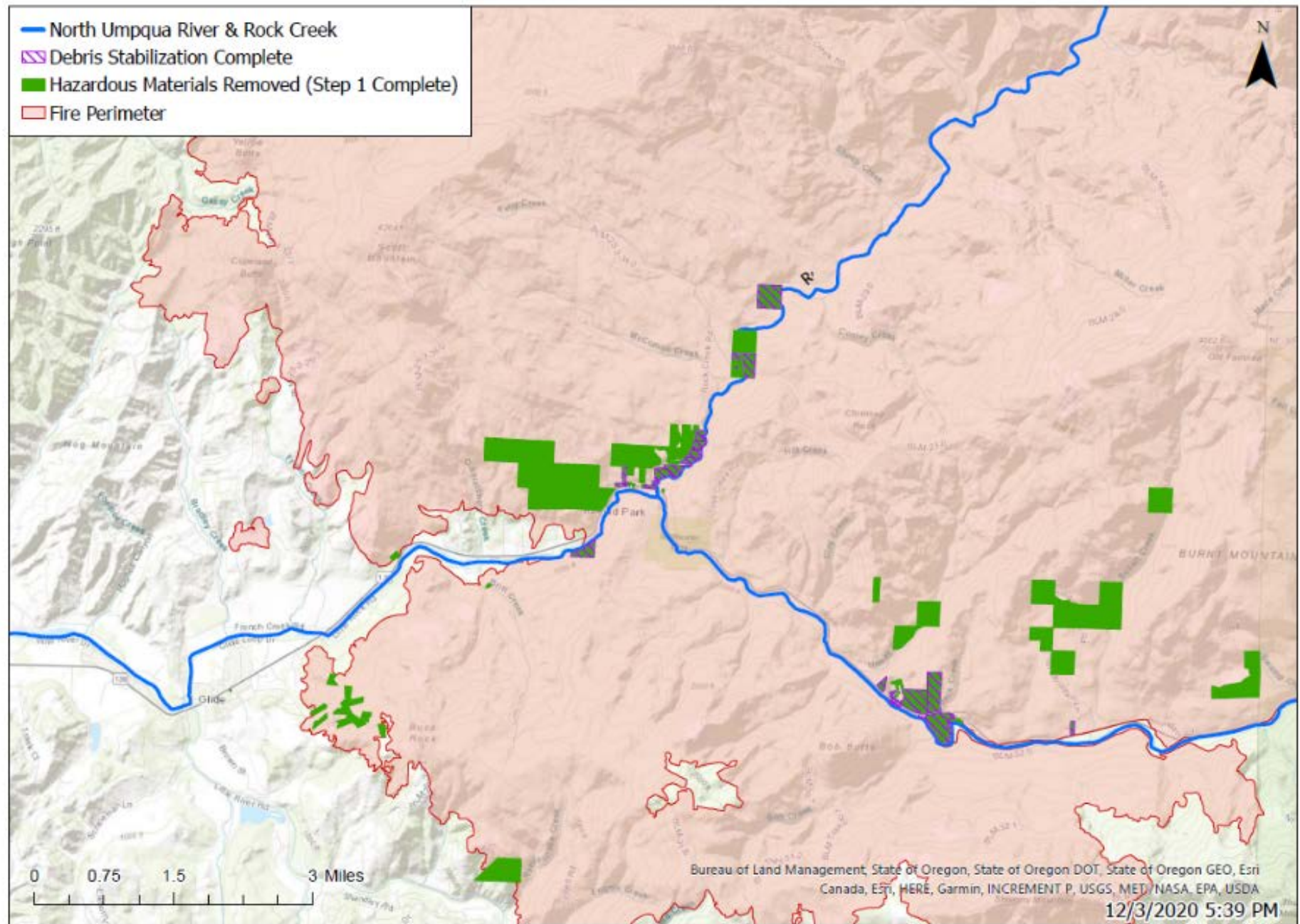
- Sediment—surface erosion & mass wasting
 - Interferes with treatment, shelters pathogens, fills intake pools
 - Abrades fish gills, smothers spawning beds
- Natural organic matter—organic carbon & nutrients
 - Fouls treatment systems, precursor to disinfection by-products, contributes to harmful algal blooms
 - Increases biochemical oxygen demand, reducing oxygen content in water
- Flow changes—floods, bed & bank erosion, summer flow changes (?)
 - Threatens infrastructure, mobilizes sediment, less shallow aquifer recharge (?)
 - May impact sensitive fish habitat, reducing holding areas or cold water refugia
- Temperature – increases due to reduced shade; may also increase chance of harmful algal blooms

Early Recovery Actions

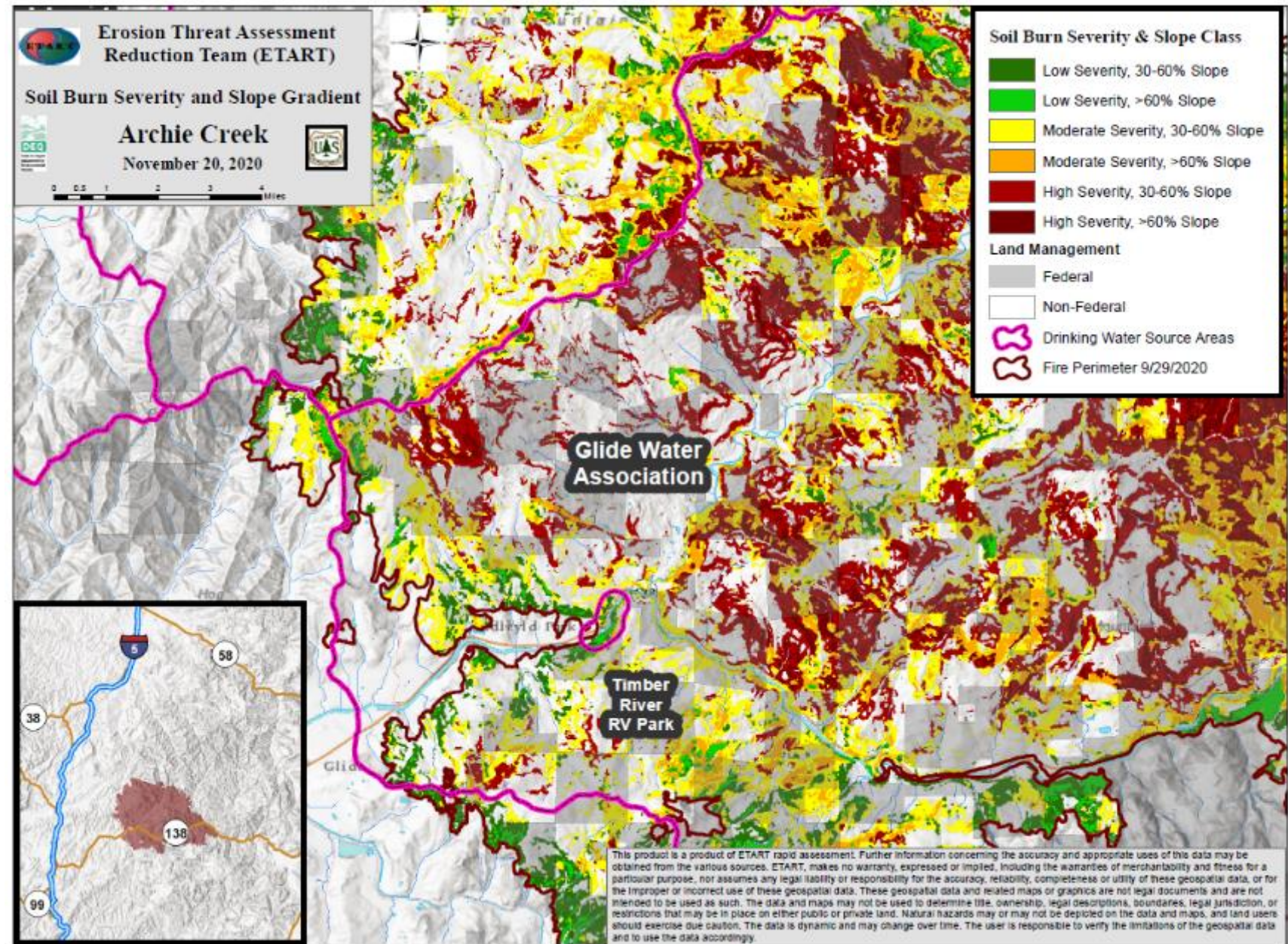
Several measures implemented:

- Phase 1 Debris Removal: Household Hazardous Waste Removal
 - Debris Task Force and EPA Contractors
- High Priority Stabilization
 - Pulling back debris and materials from banks, targeted based on local prioritization
 - Debris Task Force and EPA contractors
- Phase 2 Debris Removal: Ash and debris removal
 - Contracts being let soon under Debris Task Force
- High-Level Assessments
 - ETART, BAER, ESR

Hazardous Waste Removal Status: Archie Creek



Assessments – Example of Soil Burn Severity Map





NCRRT Task Force Organization

LOCAL, STATE, TRIBAL AND FEDERAL PARTNERSHIPS

www.wildfire.oregon.gov/NCresources

Emergency Management Functions

Response Phase Emergency Support Functions (ESF)	Recovery Phase State Recovery Functions (SRF)
ESF 1: Transportation	SRF 1: Community Planning and Capacity Building (ESFs 4, 5, 7, 13, 14, 16)
ESF 2: Communications	SRF 2: Economic Recovery (ESF 13)
ESF 3: Public Works	SRF 3: Health Services (ESF 8, 10)
ESF 4: Firefighting	SRF 4: Social Services (ESFs 11, 15)
ESF 5: Information and Planning	SRF 5: Disaster Housing (ESFs 6, 15)
ESF 6: Mass Care	SRF 6: Infrastructure Systems (ESFs 14, 16)
ESF 7: Resource Support	SRF 7: Natural and Cultural Resources (ESFs 10, 17)
ESF 8: Health and Medical	
ESF 9: Search and Rescue	
ESF 10: Hazardous Materials	
ESF 11: Food and Water	
ESF 12: Energy	
ESF 13: Military Support	
ESF 14: Public Information	
ESF 15: Volunteers and Donations	
ESF 16: Law Enforcement	
ESF 17: Agriculture and Animal Protection	
ESF 18: Business and Industry	

Recovery Continuum

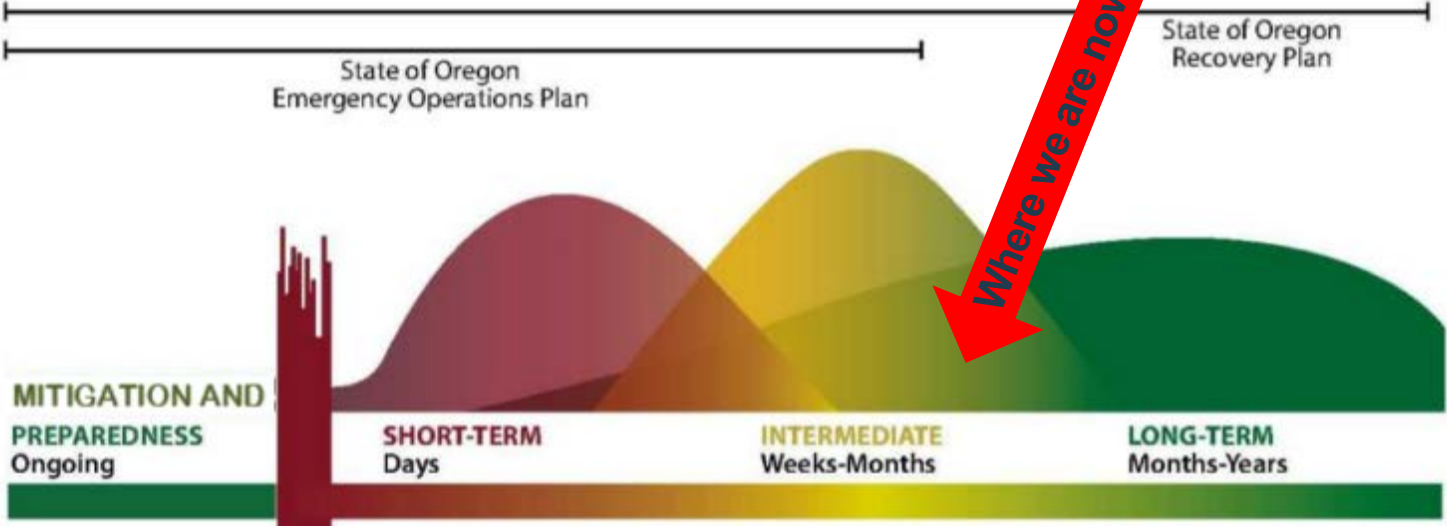


Figure 2-1 Recovery Continuum from State of Oregon Emergency Action Plan

Volume IV: Oregon Disaster Recovery Plan March 2018

Transition from Emergency Response to Recovery

Oregon 2020 Wildfire Recovery Communications Org Chart

Governor Kate Brown

Wildfire Recovery Director - Matt Garrett

Office of Emergency Management - Andrew Phelps

Primary liaison with agencies and stakeholders. Overall recovery coordination. Handling finance, FEMA Coordination, and contractors.

Inter-agency Leadership
DEQ, ODF, OWEB

SRF 7 Natural and Cultural Resources
Incident Command

Public Information
Officer

Natural and Cultural Resources Recovery
Task Force

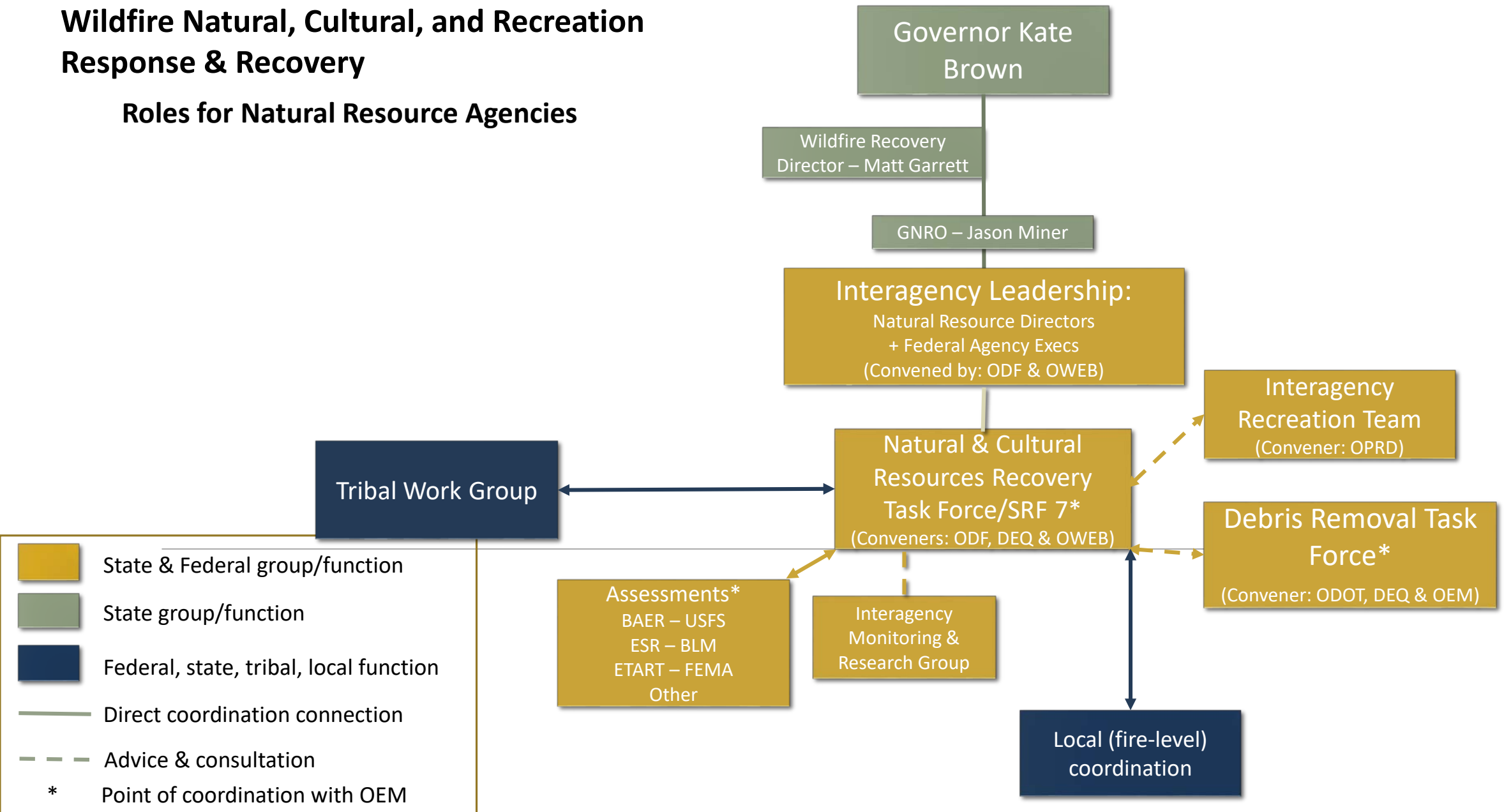
Interagency
Monitoring and
Research Group

Recovery Information
Center

Internal and external
communications.
Media liaison.
Public information officers
with each task force/SRF.

Wildfire Natural, Cultural, and Recreation Response & Recovery

Roles for Natural Resource Agencies

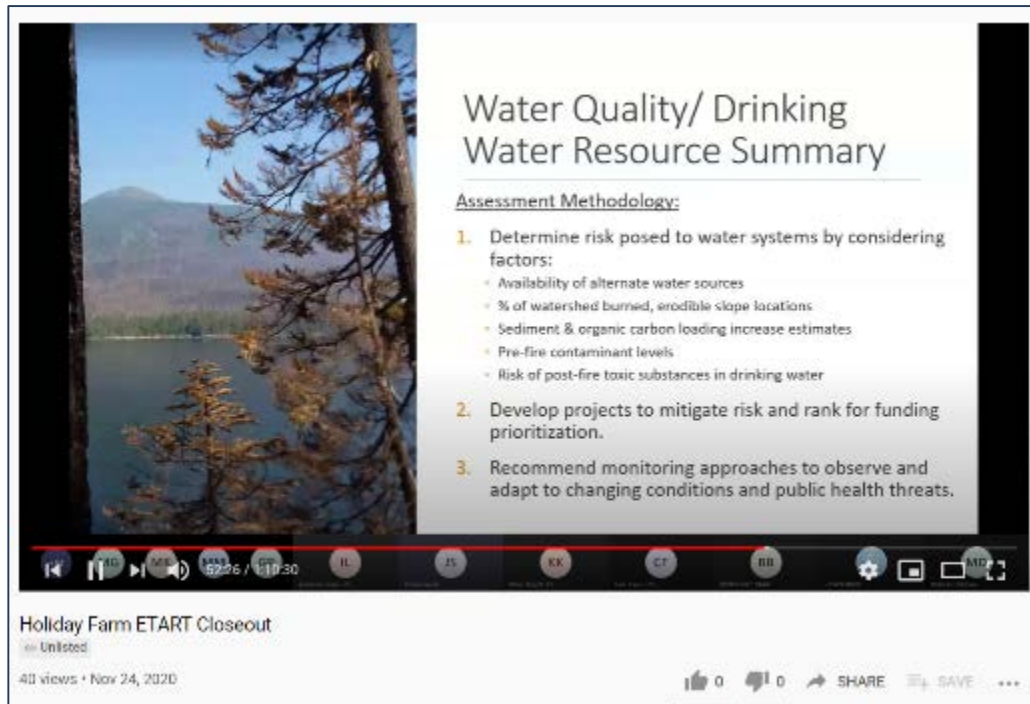


Natural and Cultural Resources Recovery Task Force

NCRRTF Sub-Groups and Related Efforts

- Assessments
- Tribal Partnerships and Cultural Resources
- Public Information & Communication
- Funding Opportunities
- Outdoor Recreation

Assessments



The screenshot shows a video player with a slide titled "Water Quality/ Drinking Water Resource Summary". The slide features a landscape image of a lake and mountains on the left. The text on the slide includes the title, a sub-heading "Assessment Methodology:", and a three-step numbered list.

Water Quality/ Drinking Water Resource Summary

Assessment Methodology:

1. Determine risk posed to water systems by considering factors:
 - Availability of alternate water sources
 - % of watershed burned, erodible slope locations
 - Sediment & organic carbon loading increase estimates
 - Pre-fire contaminant levels
 - Risk of post-fire toxic substances in drinking water
2. Develop projects to mitigate risk and rank for funding prioritization.
3. Recommend monitoring approaches to observe and adapt to changing conditions and public health threats.

Video title: Holiday Farm ETART Closeout
Views: 40 views • Nov 24, 2020



The screenshot shows a video player with a man speaking in a wood-paneled room. The man is wearing a suit and tie. The video player interface shows the name "Peter Daugherty" and the video title "Beachie Lionshead ETART Closeout".

Video title: Beachie Lionshead ETART Closeout
Views: 102 views • Nov 24, 2020

Tribal and Local Coordination

Tribal Coordination

- Participate on NCRRTF
- Engage in Tribal Work Group

Local Coordination is an evolving process

Leadership Recovery Priorities

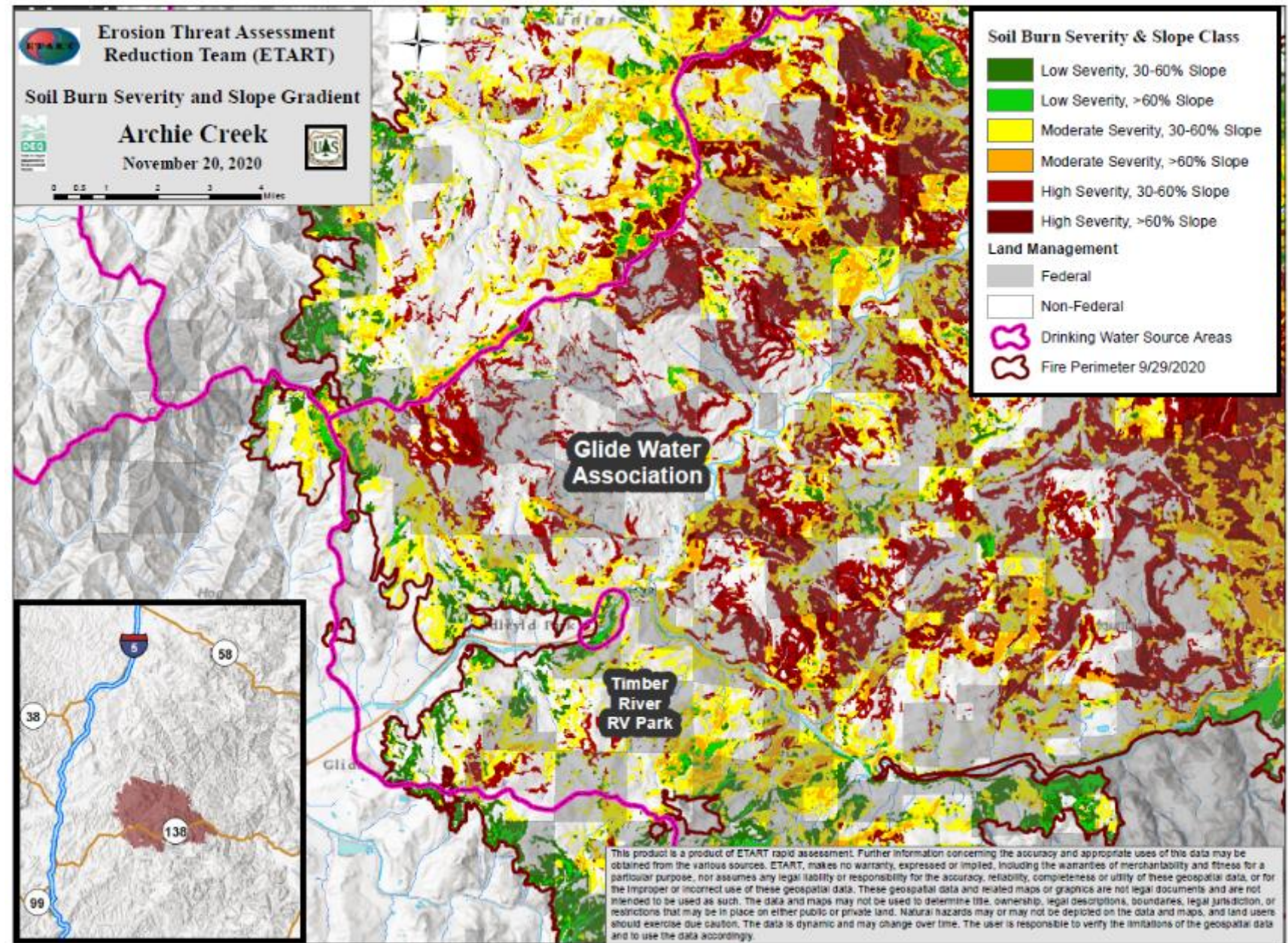
- Invest in near-term recovery needs to address areas of high erosion potential particularly associated with potential debris torrents and public safety
- Ensure drinking water sources are prioritized for recovery and restoration
- Identify critical streams for aquatic habitat and prioritize investments in those that need active restoration
- In coordination with the tribes, identify and protect areas with high concentration of cultural resources at risk.

Leadership Recovery Priorities

- Invest in near-term recovery needs to address areas of high erosion potential particularly associated with potential debris torrents and public safety
- Ensure drinking water sources are prioritized for recovery and restoration
- Identify critical streams for aquatic habitat and prioritize investments in those that need active restoration
- In coordination with the tribes, identify and protect areas with high concentration of cultural resources at risk.

Burn Severity Assessment Map

City of Glide:
Drinking Water Source Area Burn Severity



Water Impact Assessment

Erosion Threat Assessment/Reduction Team (ETART) Water Quality/Drinking Water Evaluation:

- Team included Oregon Department of Environmental Quality, US Environmental Protection Agency, US Forest Service, National Weather Service, & the Federal Emergency Management Agency
 - Significant assistance from Oregon Health Authority
- Used a combination of watershed condition & treatment engineering factors to rank the risk to public water systems.

Source/Drinking Water Impacts

Public Water System Assessment & Ranking

- Watershed Vulnerability Factors
- Interaction of Burn Severity & Slope Gradient
- Debris Flow Hazard Frequency within the Source Area (USGS estimates)
- Percent of Drinking Water Source Area within the fire perimeter
- Land Ownership-related Resource Protection Regulations

		Slope Category		
		>60%	30-60%	<30%
Burn Severity	H	H	H	M
	M	H	M	M
	L	M	L	L

Source/Drinking Water Impacts

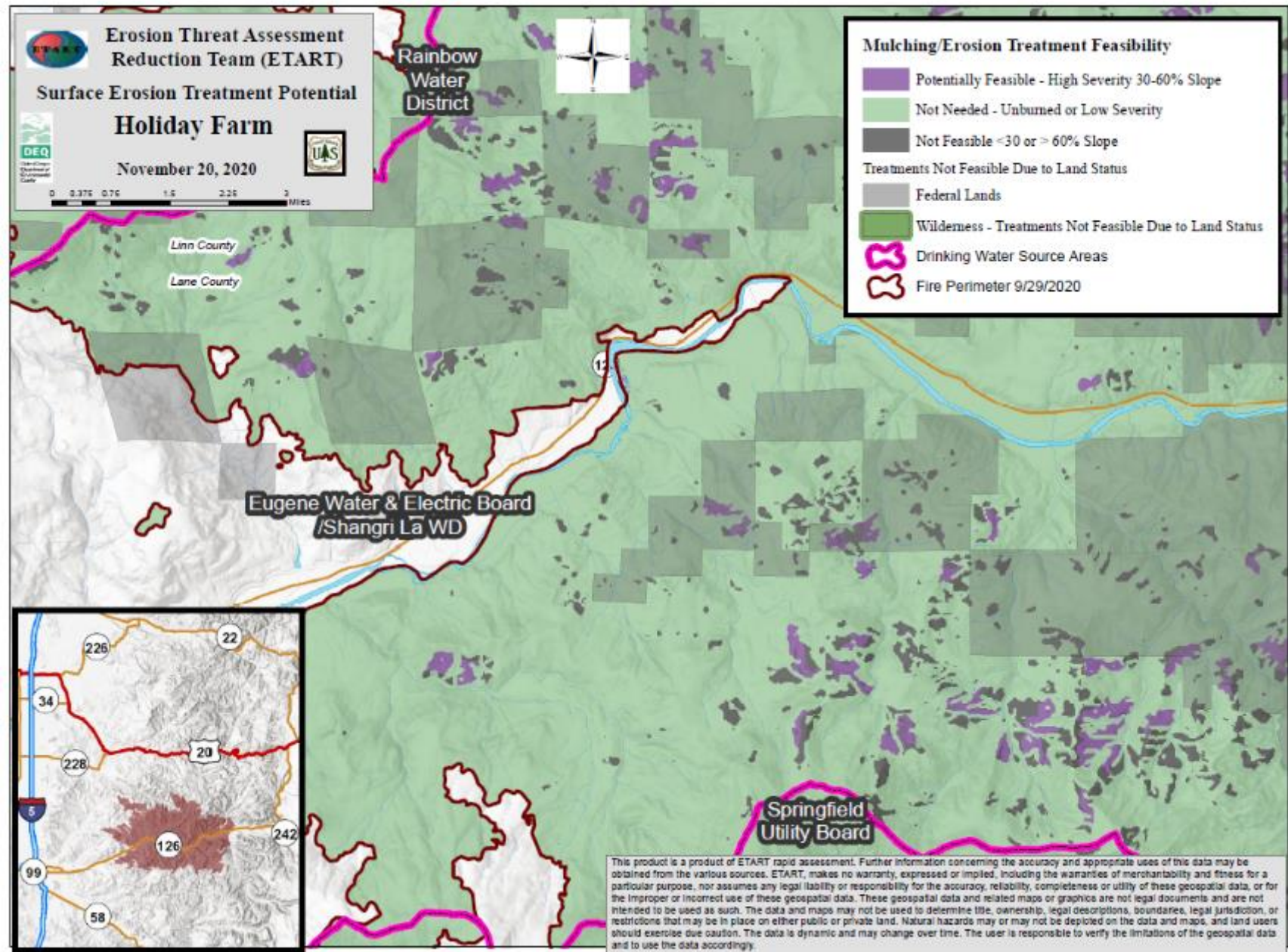
Public Water System Assessment & Ranking

Examples of PWSs with high potential risk:

- Detroit Water System, Gates, Lyons-Mehama Water District, Stayton (Beachie Creek, Lionshead)
- Panther Creek Water District (Echo Mountain Complex)
- City of Estacada (Riverside)
- City of Molalla (Beachie Creek, Riverside)
- Glide Water Association, City of Roseburg (Archie Creek)



Source/ Drinking Water Impacts



Presentation Contacts

KYLE ABRAHAM (ODF) – Private Forests Division Chief

Kyle.Abraham@oregon.gov

KEITH ANDERSEN (DEQ) – Western Region Administrator

Keith.Andersen@oregon.gov

RENEE DAVIS (OWEB) – Deputy Director

Renee.Davis@oregon.gov

JOSH SEEDS (DEQ) – Nonpoint Source Specialist

Joshua.Seeds@state.or.us

HOUSE COMMITTEE ON WATER

DECEMBER 15 2020 1030 AM



Local Impacts

COMMUNITIES, UTILITIES AND WATERSHED COUNCILS