

SRF 7: Natural and Cultural Resources Recovery (NCRR) Task Force

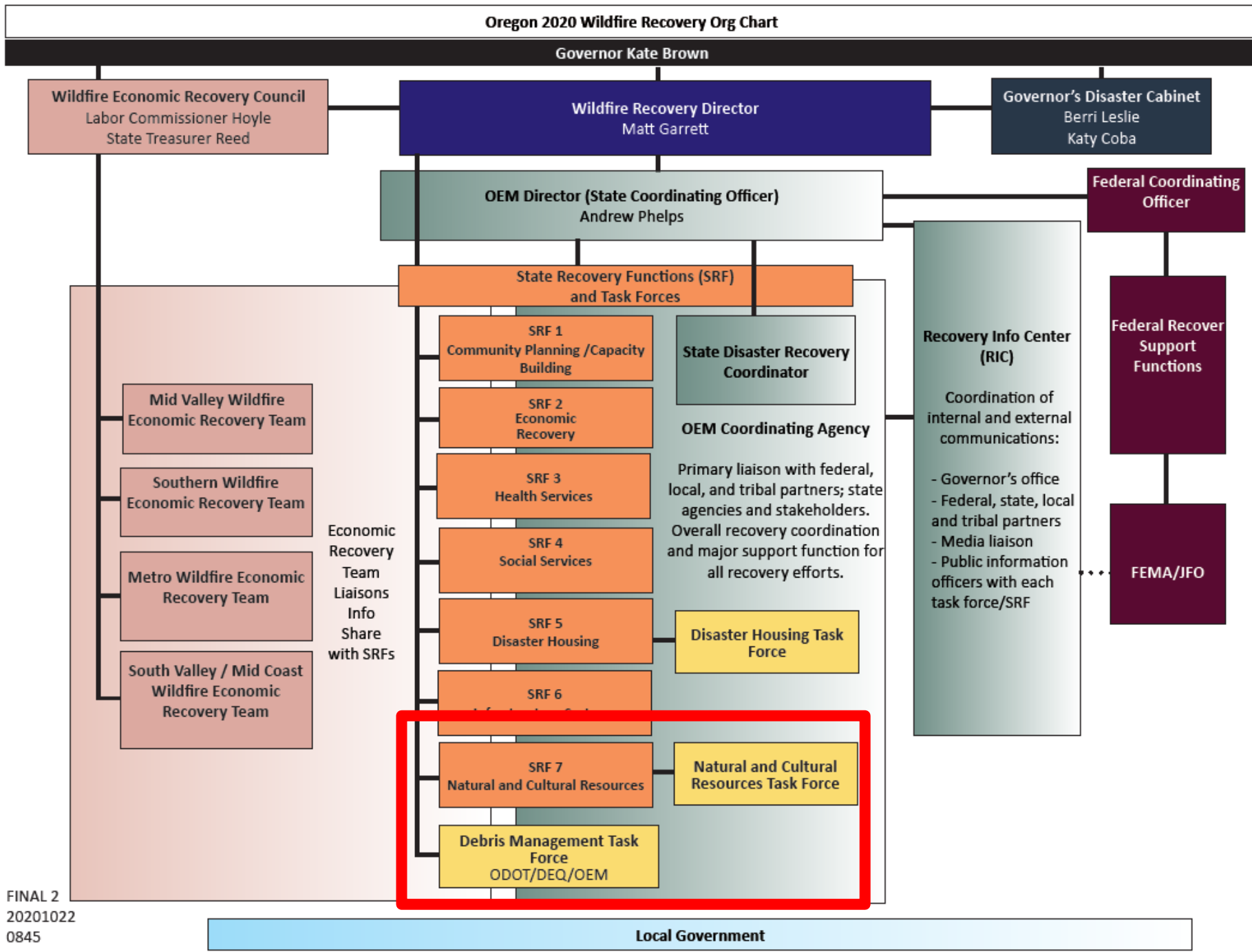
SENATE ENVIRONMENT AND NATURAL RESOURCES

DECEMBER 7 2020

KYLE ABRAHAM (ODF)
KEITH ANDERSEN (DEQ)
JOSH SEEDS (DEQ)

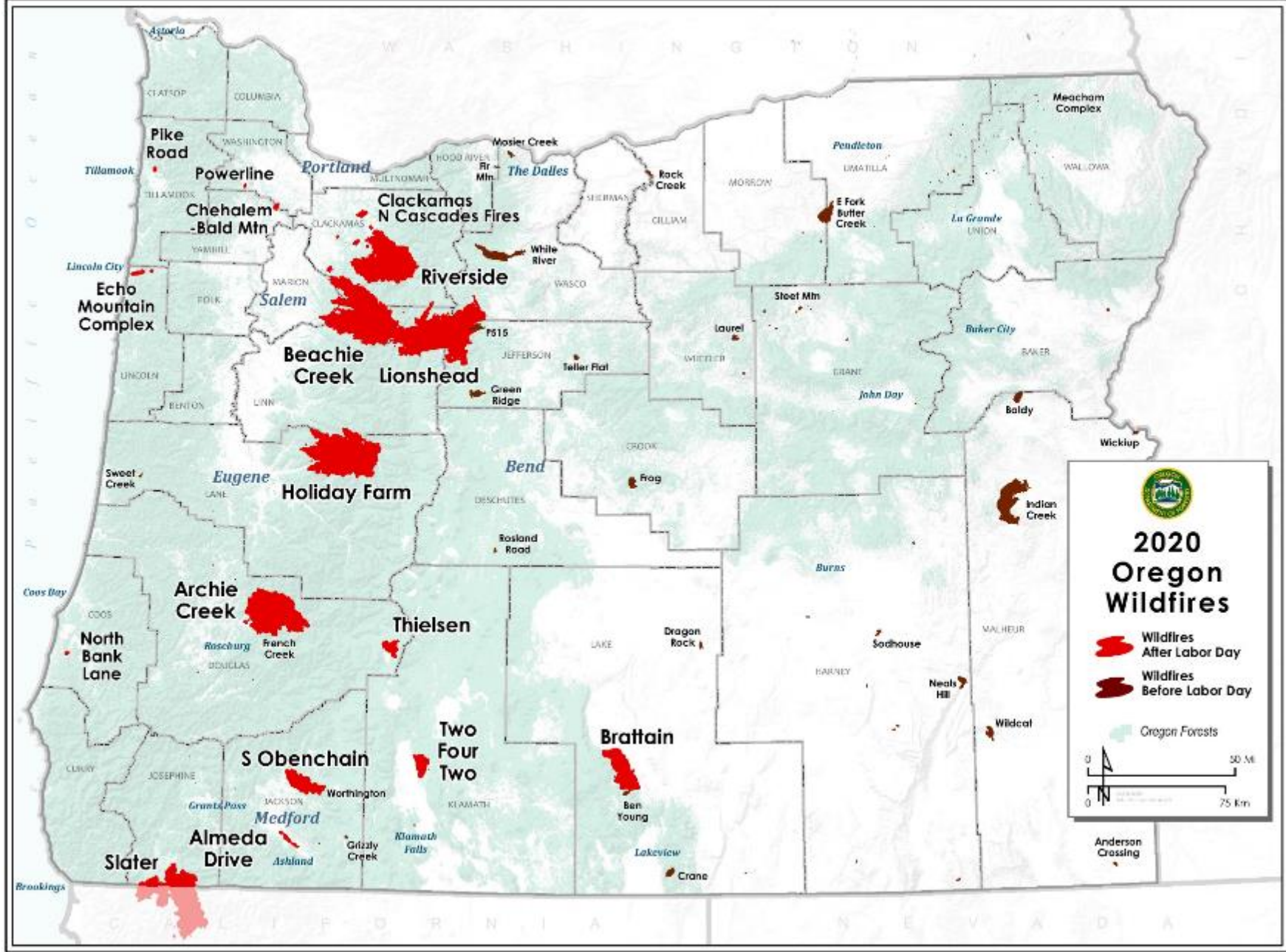


Oregon 2020 Wildfire Recovery Org Chart



FINAL 2
20201022
0845

12/6/2020







Watershed Impacts

Potential Threats to Water Quality

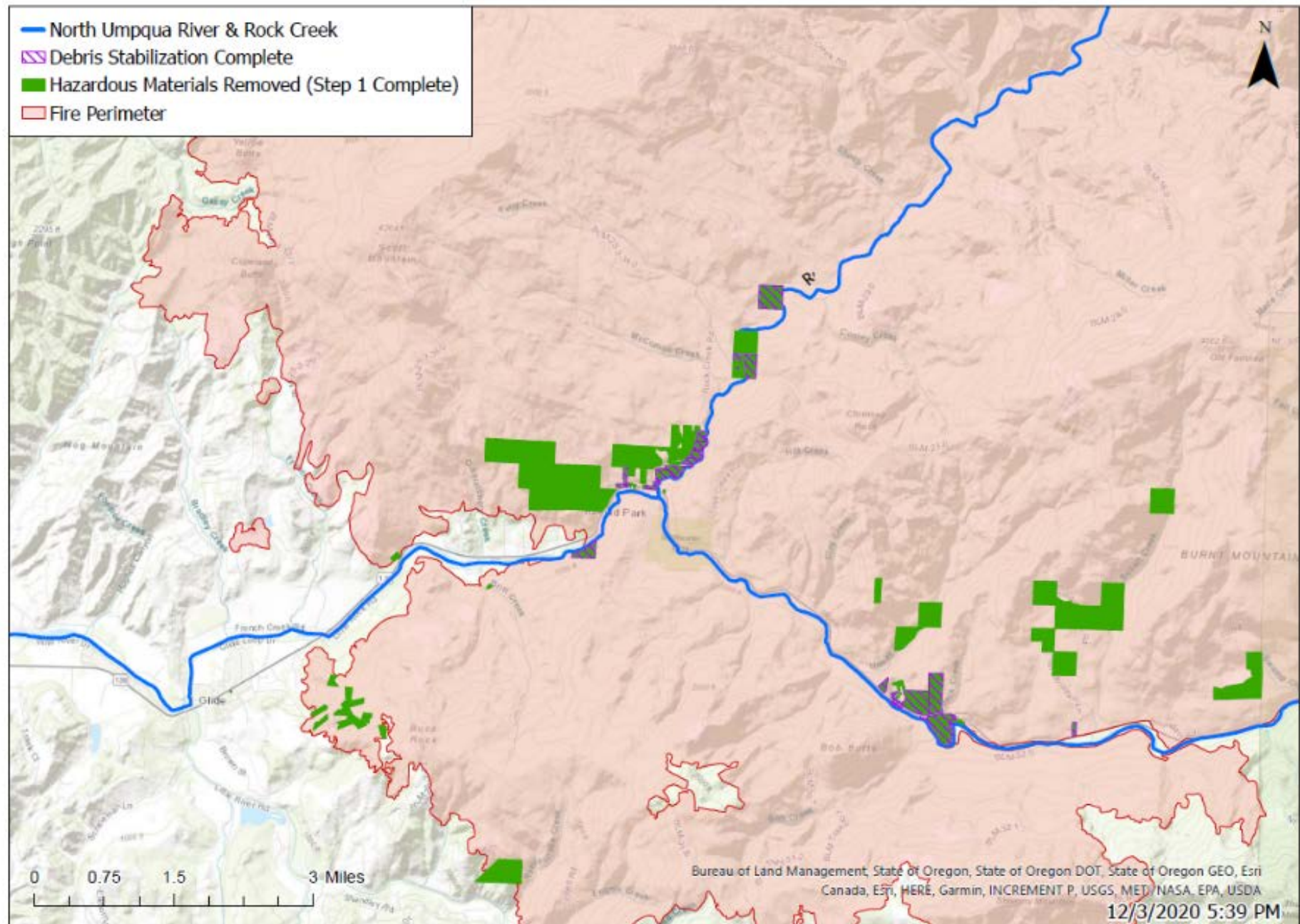
- Sediment—surface erosion & mass wasting
 - Interferes with treatment, shelters pathogens, fills intake pools
 - Abrades fish gills, smothers spawning beds
- Natural organic matter—organic carbon & nutrients
 - Fouls treatment systems, precursor to disinfection by-products, contributes to harmful algal blooms
 - Increases biochemical oxygen demand, reducing oxygen content in water
- Flow changes—floods, bed & bank erosion, summer flow changes (?)
 - Threatens infrastructure, mobilizes sediment, less shallow aquifer recharge (?)
 - May impact sensitive fish habitat, reducing holding areas or cold water refugia
- Temperature – increases due to reduced shade; may also increase chance of harmful algal blooms

Early Recovery Actions

Several measures implemented:

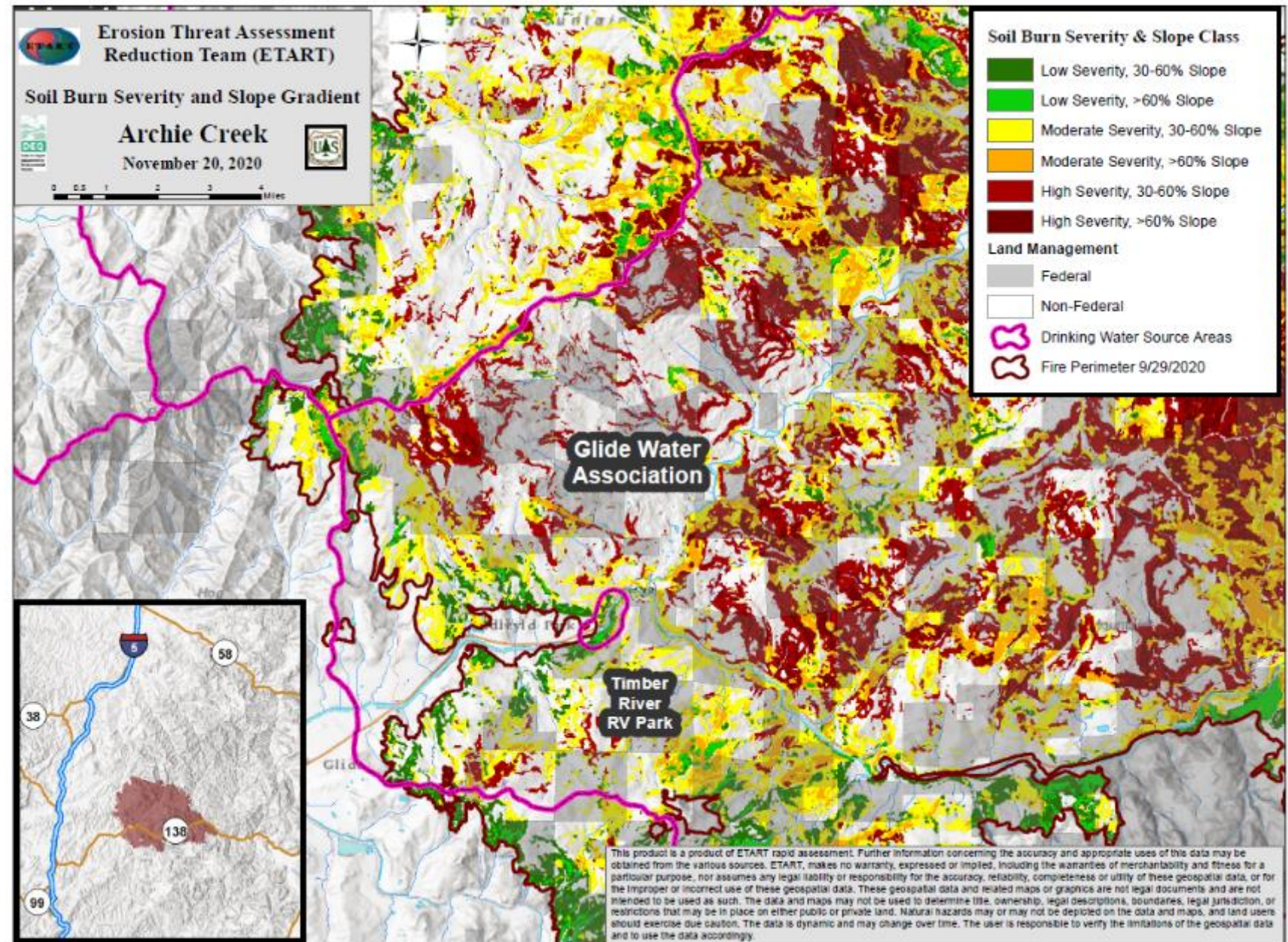
- Phase 1 Debris Removal: Household Hazardous Waste Removal
 - Debris Task Force and EPA Contractors
- High Priority Stabilization
 - Pulling back debris and materials from banks, targeted based on local prioritization
 - Debris Task Force and EPA contractors
- Phase 2 Debris Removal: Ash and debris removal
 - Contracts being let soon under Debris Task Force
- High-Level Assessments
 - ETART, BAER, ESR

Hazardous Waste Removal Status: Archie Creek



Burn Severity Assessment Map

City of Glide:
Drinking Water Source Area Burn Severity



Water Impact Assessment

Erosion Threat Assessment/Reduction Team (ETART) Water Quality/Drinking Water Evaluation:

- Team included Oregon Department of Environmental Quality, US Environmental Protection Agency, US Forest Service, National Weather Service, & the Federal Emergency Management Agency
 - Significant assistance from Oregon Health Authority
- Used a combination of watershed condition & treatment engineering factors to rank the risk to public water systems.

Source/Drinking Water Impacts

Public Water System Assessment & Ranking

- Watershed Vulnerability Factors
- Interaction of Burn Severity & Slope Gradient
- Debris Flow Hazard Frequency within the Source Area (USGS estimates)
- Percent of Drinking Water Source Area within the fire perimeter
- Land Ownership-related Resource Protection Regulations

		Slope Category		
		>60%	30-60%	<30%
Burn Severity	H	H	H	M
	M	H	M	M
	L	M	L	L

Source/Drinking Water Impacts

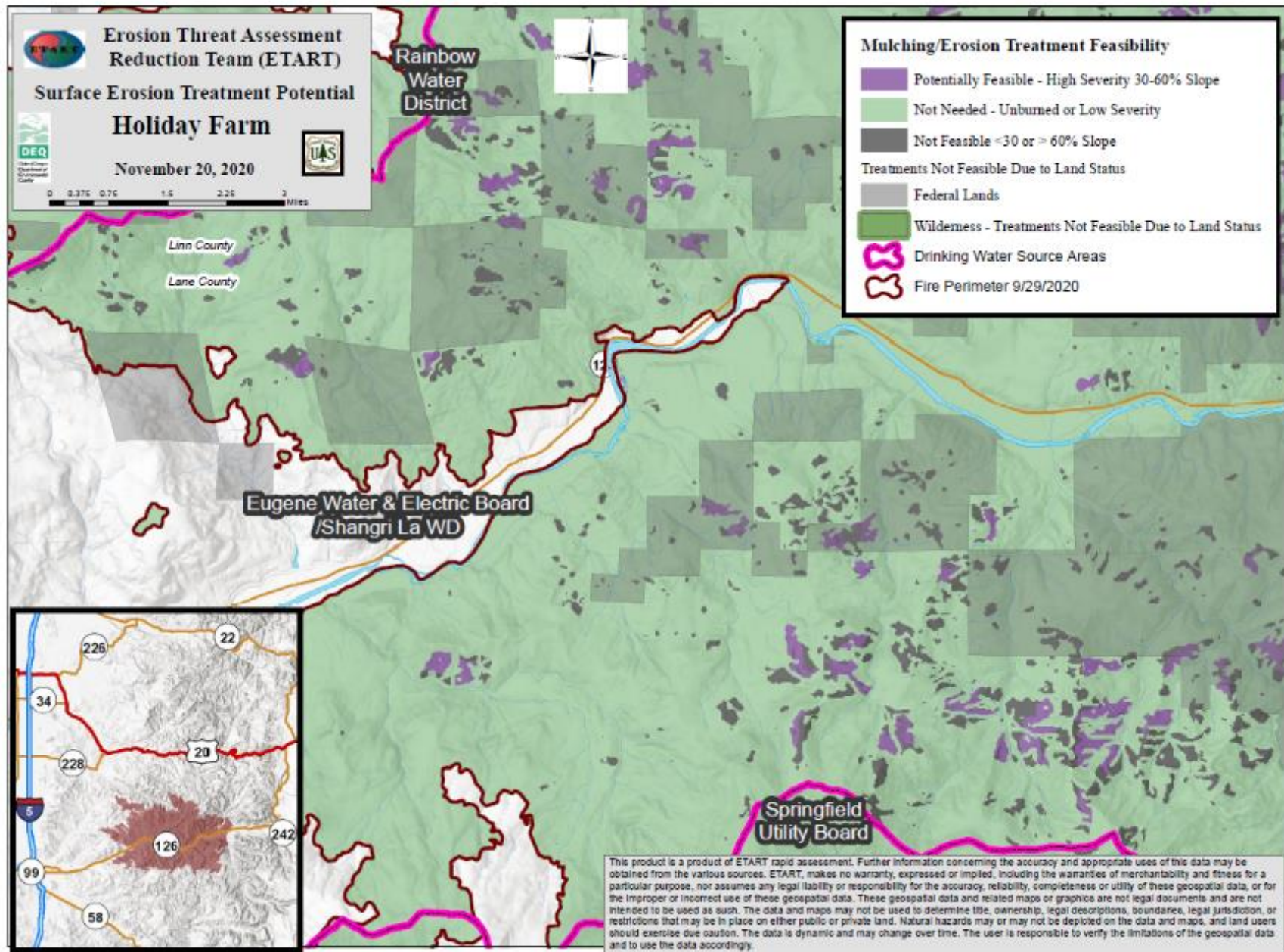
Public Water System Assessment & Ranking

Examples of PWSs with high potential risk:

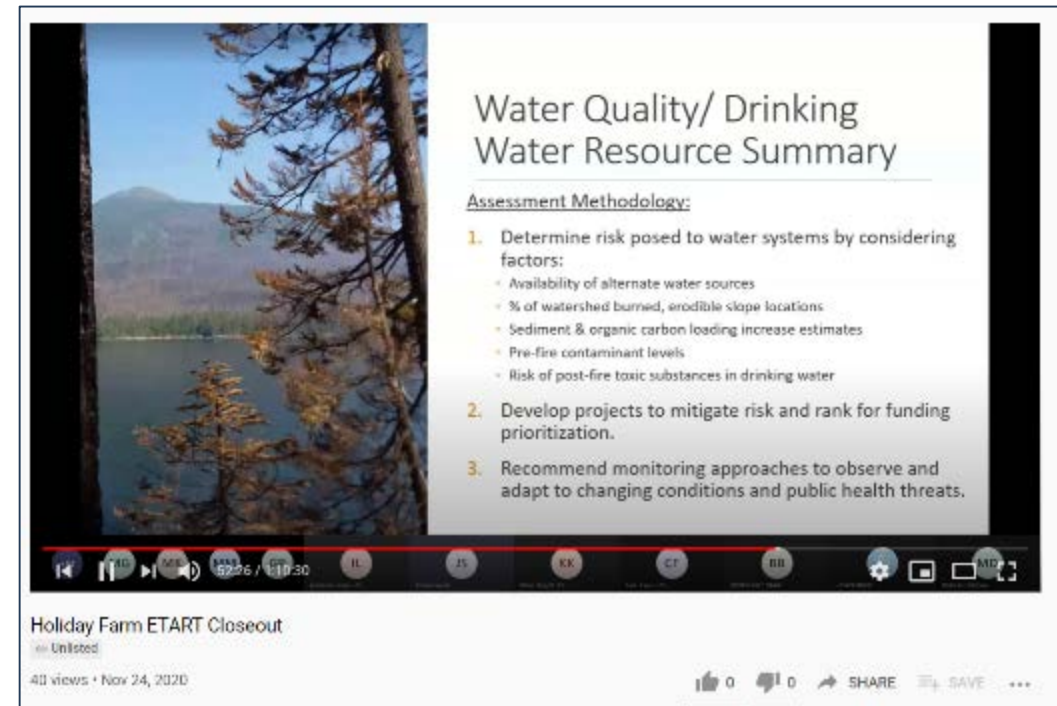
- Detroit Water System, Gates, Lyons-Mehama Water District, Stayton (Beachie Creek, Lionshead)
- Panther Creek Water District (Echo Mountain Complex)
- City of Estacada (Riverside)
- City of Molalla (Beachie Creek, Riverside)
- Glide Water Association, City of Roseburg (Archie Creek)



Source/ Drinking Water Impacts



ETART Closeout & Next Steps



Now available to view on Oregon Department of Forestry's YouTube Page.

Tribal and Local Coordination

- Tribal representatives invited to participate on Natural and Cultural Resource Recovery Task Force
- Tribal Work Group
- Local Coordination Evolving

Ensure:

- *opportunity for constructive coordination regarding natural and cultural resources.*
- *venue for sharing proprietary tribal cultural or natural resource information where appropriate to ensure comprehensive assessments*
- *good coordination and information sharing with local stakeholders*

Local Impacts

COMMUNITIES, UTILITIES AND WATERSHED COUNCILS

Presentation Contacts

KYLE ABRAHAM (ODF) – Private Forests Division Chief

Kyle.Abraham@oregon.gov

KEITH ANDERSEN (DEQ) – Western Region Administrator

Keith.Andersen@oregon.gov

JOSH SEEDS (DEQ) – Nonpoint Source Specialist

Joshua.Seeds@state.or.us

SENATE ENVIRONMENT AND NATURAL RESOURCES

DECEMBER 7 2020

