

Oregon COVID-19 Update

December 7, 2020

Patrick Allen, Director

Oregon Overview

Oregon COVID-19 Cases and Deaths as of 12/06 at 12:18pm

Source: CDC, <https://covid.cdc.gov/covid-data-tracker>

	Oregon Total	Oregon per 100k	Oregon Rank
Cases	83,243	1,986	5 th lowest (median = 4,848)
Deaths	1,027	24	5 th lowest (median = 78)

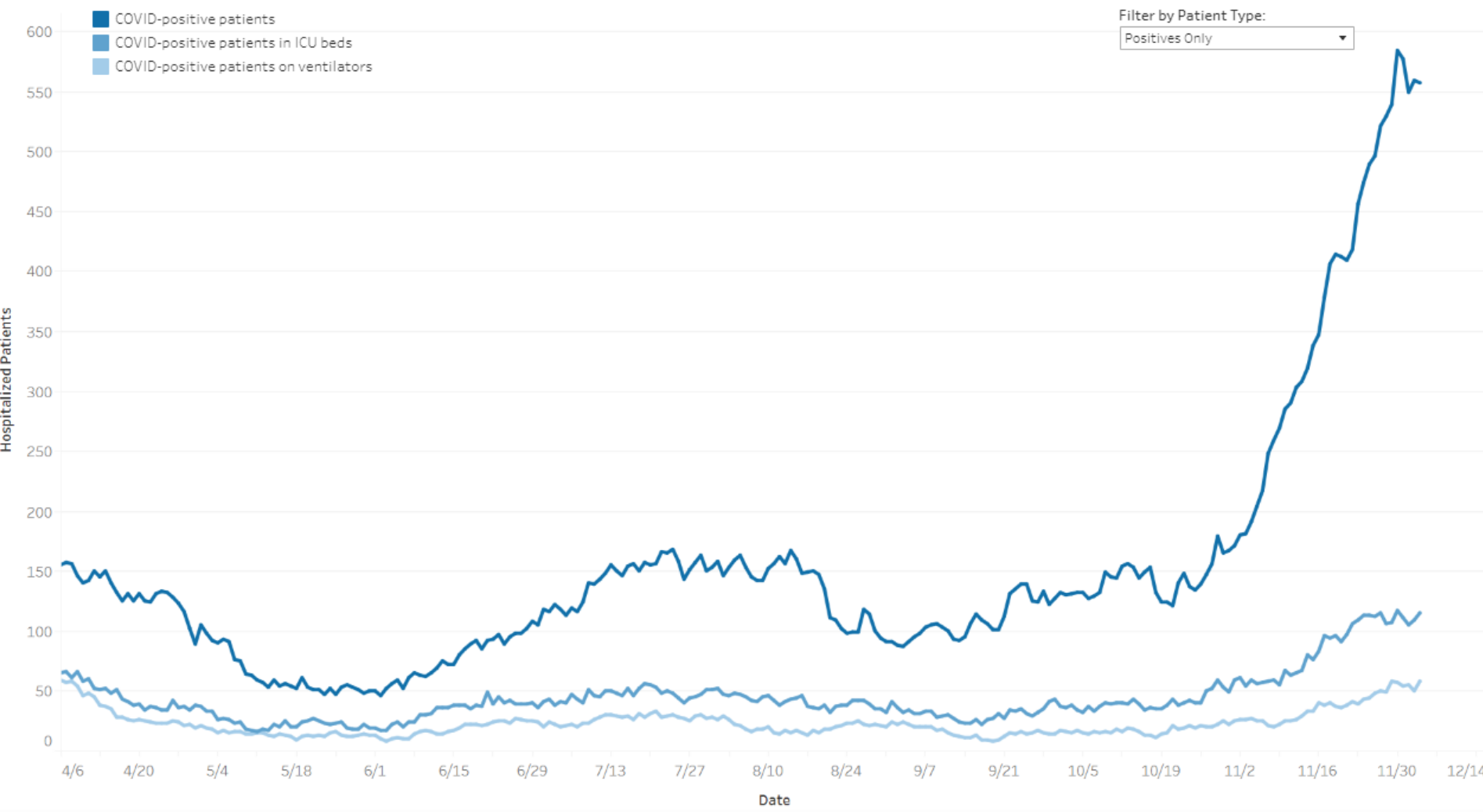
Oregon COVID-19 Tests as of 12/04 at 12:01am

Source: OHA, <https://public.tableau.com/profile/oregon.health.authority.covid.19#!/vizhome/OregonCOVID-19Update/CaseandTesting>

	Total
Positive Tests	117,021
Negative Tests	1,970,033
Tests Administered	2,087,054

Oregon's Hospitalization Trends by Severity

This chart shows daily COVID-19 hospitalizations and whether patients were in the ICU or on ventilators, as reported to Oregon's Hospital Capacity Web System (HOSCAP)¹. It initially displays only those who tested positive, but you can view all suspected or confirmed patients² using the dropdown menu below. Click on a legend item to highlight it in the chart (ctrl+click to select multiple items).



Source: OHA,
<https://public.tableau.com/profile/oregon.health.authority.covid.19#!/vizhome/OregonCOVID-19HospitalCapacity/HospitalizationbySeverity>

New County Risk Levels

Disease Activity	Lower Risk	Moderate Risk	High Risk	Extreme Risk
Rate of COVID-19 cases per 100,000 over 14 days (counties with 30,000+ people)	< 50.0	50.0 to < 100.0	100.0 to < 200.0	≥ 200.0
Number of COVID-19 cases over 14 days (counties with <30,000 people)	< 30	30 to < 45	45 to 59	≥ 60
Percentage test positivity over previous 14 days (counties with >15,000 people)	< 5.0%	5.0% to < 8.0%	8.0% to < 10.0%	$\geq 10.0\%$

Risk Mitigations

Activities	Lower Risk	Moderate Risk	High Risk	Extreme Risk
Indoor Gatherings	<ul style="list-style-type: none"> –Capacity: max 10 people –Recommended limit 4 households 	<ul style="list-style-type: none"> –Capacity: max 8 people –Recommended limit 2 households 	<ul style="list-style-type: none"> –Capacity: max 6 people –Recommended limit 2 households 	<ul style="list-style-type: none"> –Capacity: max 6 people –Recommended limit 2 households
Outdoor Gatherings	<ul style="list-style-type: none"> –Capacity: max 12 people 	<ul style="list-style-type: none"> –Capacity: max 10 people 	<ul style="list-style-type: none"> –Capacity: max 8 people 	<ul style="list-style-type: none"> –Capacity: max 6 people –Recommended limit 2 households
Eating/Drinking Establishments	<ul style="list-style-type: none"> –Indoor dining allowed with capacity limits –Outdoor dining allowed with capacity limits –Max 8 people per table –12:00am closing 	<ul style="list-style-type: none"> –Indoor dining allowed with capacity limits –Outdoor dining allowed with capacity limits –11:00pm closing 	<ul style="list-style-type: none"> –Takeout highly recommended –Indoor dining allowed with capacity limits –Outdoor dining allowed with capacity limits –11:00pm closing 	<ul style="list-style-type: none"> –Takeout highly recommended –Indoor dining prohibited –Outdoor dining allowed with capacity limits –11:00pm closing
Indoor Recreation/ Fitness/ Entertainment	<ul style="list-style-type: none"> –Capacity: max 50% occupancy 	<ul style="list-style-type: none"> –Capacity: max 50% occupancy or 100 people (whichever is smaller) 	<ul style="list-style-type: none"> –Capacity: max 25% occupancy or 50 people (whichever is smaller) 	<ul style="list-style-type: none"> –Prohibited
Hiking/Camping, Personal Services	<ul style="list-style-type: none"> –Allowed 	<ul style="list-style-type: none"> –Allowed 	<ul style="list-style-type: none"> –Allowed 	<ul style="list-style-type: none"> –Allowed

Full chart available [HERE](#).

Risk Mitigations

Activities	Lower Risk	Moderate Risk	High Risk	Extreme Risk
Retail/ Shopping Centers	<ul style="list-style-type: none"> –Curbside pick-up recommended –Capacity: max 75% occupancy 	<ul style="list-style-type: none"> –Curbside pick-up recommended –Capacity: max 75% occupancy 	<ul style="list-style-type: none"> –Curbside pick-up recommended –Capacity: max 50% occupancy 	<ul style="list-style-type: none"> –Curbside pick-up recommended –Capacity: max 50% occupancy
Faith Institutions, Funeral Homes, Mortuaries, Cemeteries	<ul style="list-style-type: none"> –Indoor Capacity: Maximum 75% occupancy. –Outdoor Capacity: 300 people maximum 	<ul style="list-style-type: none"> –Indoor Capacity: Maximum 50% occupancy or 150 people total, whichever is smaller. –Outdoor Capacity: 250 people maximum 	<ul style="list-style-type: none"> –Indoor Capacity: Maximum 25% occupancy or 150 people total, whichever is smaller. –Outdoor Capacity: 200 people maximum 	<ul style="list-style-type: none"> –Recommended: limit services to one hour –Indoor Capacity: Maximum 25% occupancy or 100 people total, whichever is smaller. –Outdoor Capacity: 150 people maximum.
Offices	<ul style="list-style-type: none"> –Limited office work available 	<ul style="list-style-type: none"> –Recommend remote work if able 	<ul style="list-style-type: none"> –Recommend remote work if able 	<ul style="list-style-type: none"> –Require remote work if able –Close offices to the public
Outdoor Recreation/ Fitness/ Entertainment	<ul style="list-style-type: none"> –Capacity: max 300 people 	<ul style="list-style-type: none"> –Capacity: max 150 people 	<ul style="list-style-type: none"> –Capacity: max 75 people 	<ul style="list-style-type: none"> –Capacity: max 50 people
Long-Term Care	<ul style="list-style-type: none"> –Visitation allowed 	<ul style="list-style-type: none"> –Visitation allowed 	<ul style="list-style-type: none"> –Visitation allowed 	<ul style="list-style-type: none"> –Outside visitation only

Full chart available [HERE](#).

Risk Level Timeline

WEEK 1 Warning week



Data for risk level determination are pulled*

SUNDAY

MONDAY

TUESDAY

WEDNESDAY

THURSDAY

FRIDAY

SATURDAY

WEEK 2 Movement week



Data for risk level determination are pulled*



Press release about counties that are moving risk levels (based on change in data)



Counties are formally moved to new risk levels

SUNDAY

MONDAY

TUESDAY

WEDNESDAY

THURSDAY

FRIDAY

SATURDAY

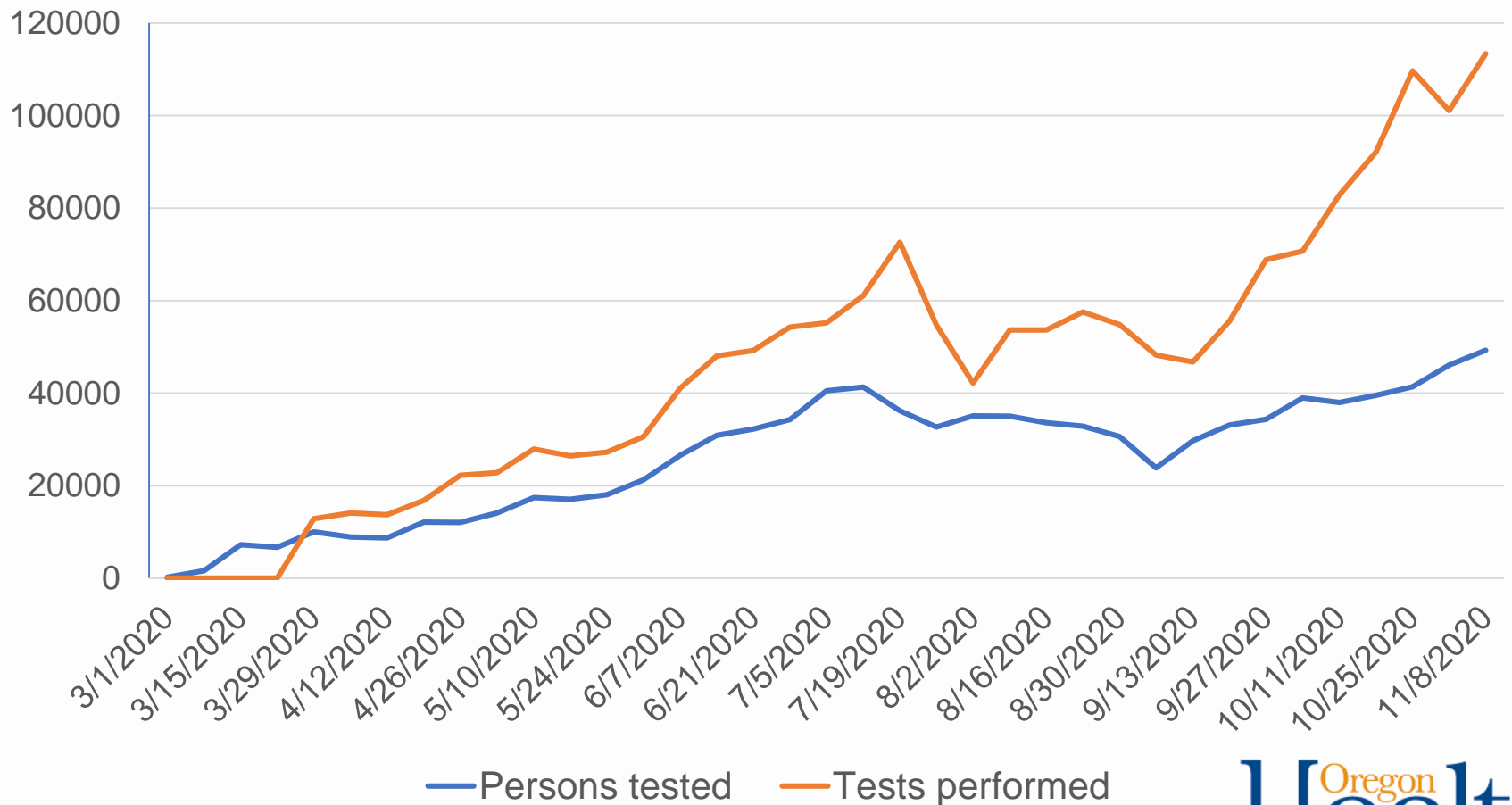
* Data is from the prior two week period through Saturday

Testing in Oregon

- Percentage of positive COVID-19 tests is key metric in determining spread of COVID-19
- No longer calculating percent positivity from people who test positive; now calculating from all test results
- Revised process for reporting test results took effect Dec. 3
 - Aligns with new statewide framework
- To support this change, and to maintain transparency in reporting on COVID-19, OHA is changing [its public dashboards](#)
 - Transition is expected to be complete around Dec 18
 - Continuing to update dashboards on weekdays
- Interim dashboard reporting test results at the state and county levels until new revised dashboard is deployed

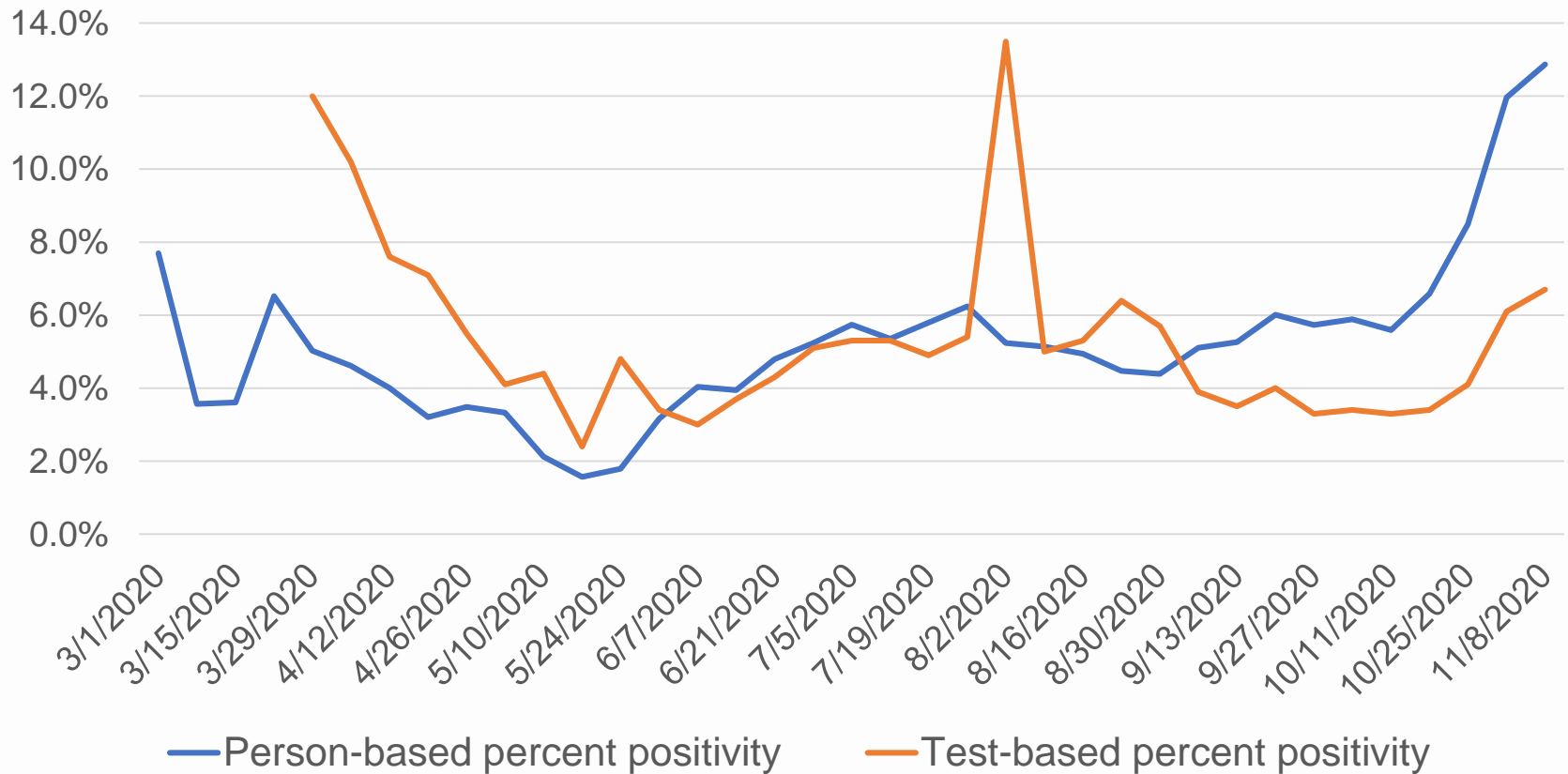
Testing in Oregon

Measuring Testing in Oregon
Person-based vs. Test-based Methods



Testing in Oregon

Measuring Testing in Oregon Person-based vs. Test-based Percent Positivity

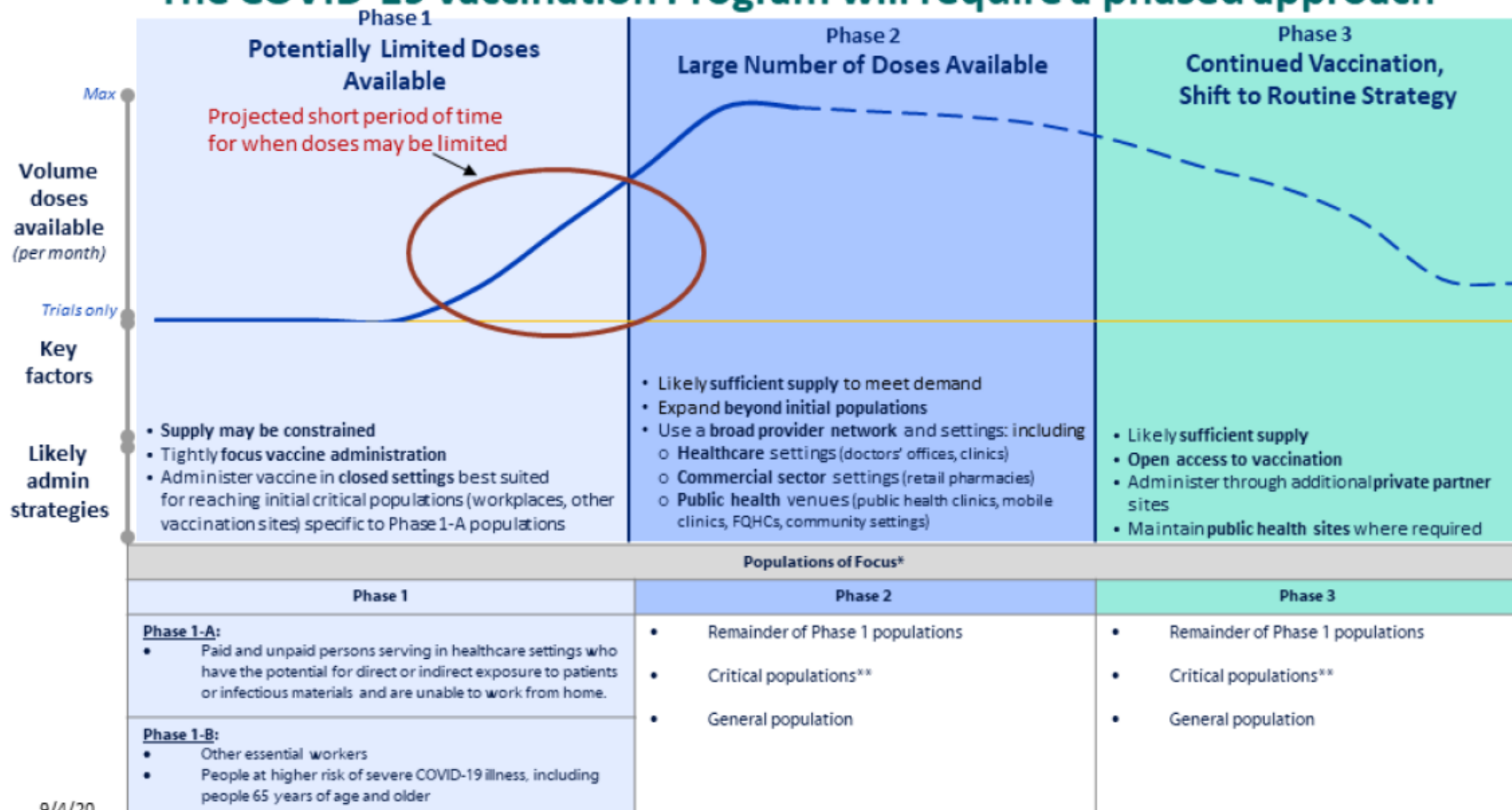


Vaccine Update

- Two COVID-19 vaccines pending FDA approval via EUA
- Oregon's vaccination plan can be found here:
<https://www.oregon.gov/oha/covid19/Documents/COVID-19-Vaccination-Plan-Oregon.pdf>
- OHA COVID-19 Vaccine Websites:
 - English: <http://healthoregon.org/covidvaccine>
 - Spanish: <http://healthoregon.org/vacunacovid>
- Legislative COVID-19 Vaccine Briefing: December 9th at 12:15pm

Vaccine Allocation and Phased Approach

The COVID-19 Vaccination Program will require a phased approach



9/4/20

Thank you!