

September 2020 Fires

Joint Committee on Transportation

September 23, 2020

Mac Lynde, Deputy Administrator, Delivery and Operations Division

Wildfire Closure Status

Current as of 9/22/2020 12:00 PM

Highway Status

WILDFIRE CLOSURE

Level A
FULL CLOSURE/
EVALUATING DAMAGE

Level B
CRITICAL SERVICES

Level C
PARTIAL OPENING

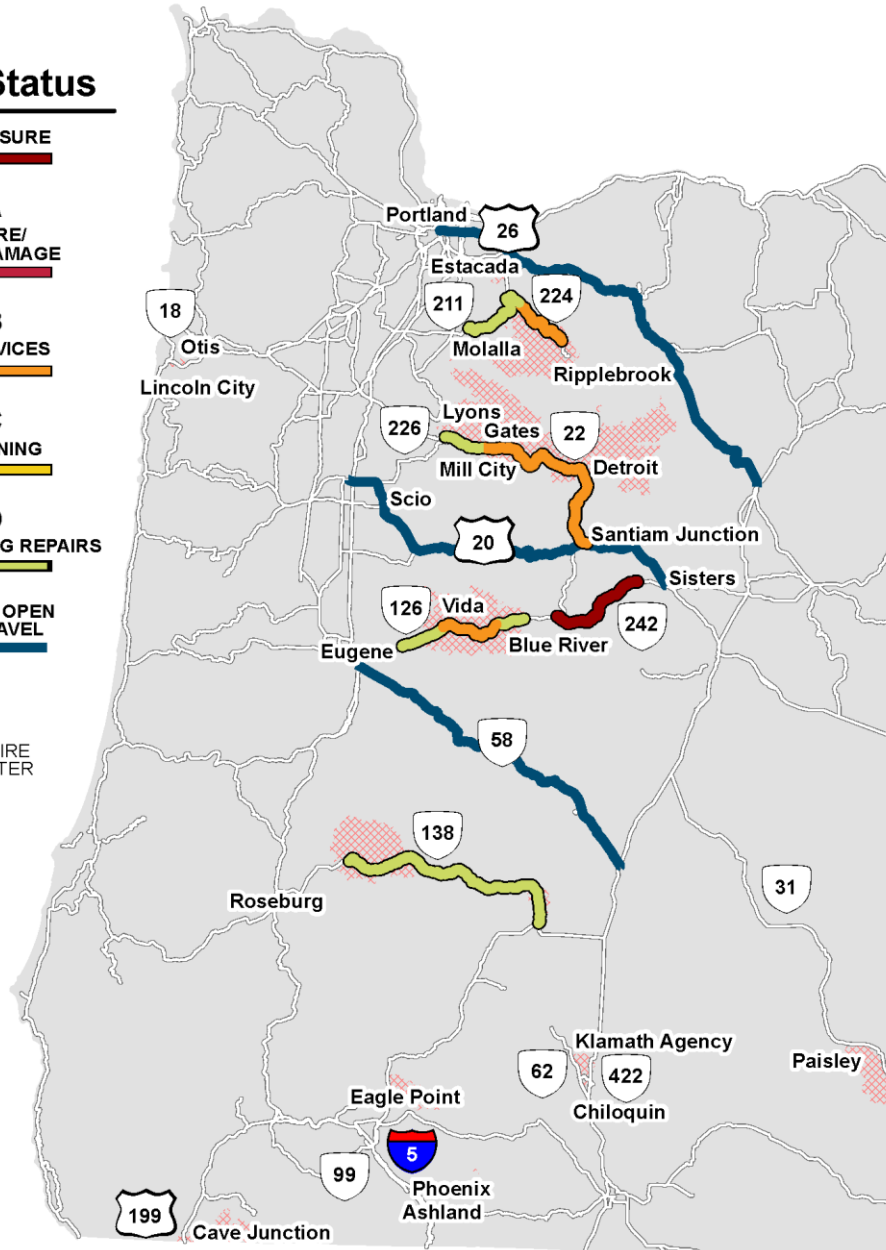
Level D
OPEN WITH ONGOING REPAIRS

**MAJOR ROUTE OPEN
FOR W↔E TRAVEL**

NWCC FIRE
PERIMETER



Statewide View + Status



Alameda Drive Fire

I-5 Between Talent and
Phoenix



OR 138E: Archie Creek Fire

Between Glide and Diamond Lake



OR 22: Beachie Creek Fire

Lyons, Gates, Mill City, and Detroit





OR 126: Holiday Farm Fire

Vida and Blue River





Wireless Communication Impacts



Reopening the Roads: After the Wildfires



PHASE A: EVALUATION

- Monitor Hazardous Conditions
- Emergency Services Access
- Evacuate Public

FULL CLOSURE

TIMELINE:
Depends on Nature of Hazard
Hours, Days or Weeks



PHASE B: CRITICAL SERVICES

- Remove High Priority Hazards
- Single Lane of Traffic
- Priority to Emergency Responders, Safety Personnel, Utilities

FULL CLOSURE
Emergency and Service
Vehicles Only

TIMELINE:
Depends on Nature of Hazard
Hours, Days or Weeks



PHASE C: PARTIAL OPENING

- Remove Debris and Secondary Hazards
- Inspect System for Damage
- Partial Access to Public

TRAFFIC RESUMES
Flaggers | Pilot Cars |
Lane Closures

TIMELINE:
Depends on Nature of Hazard
Days, Weeks or Months



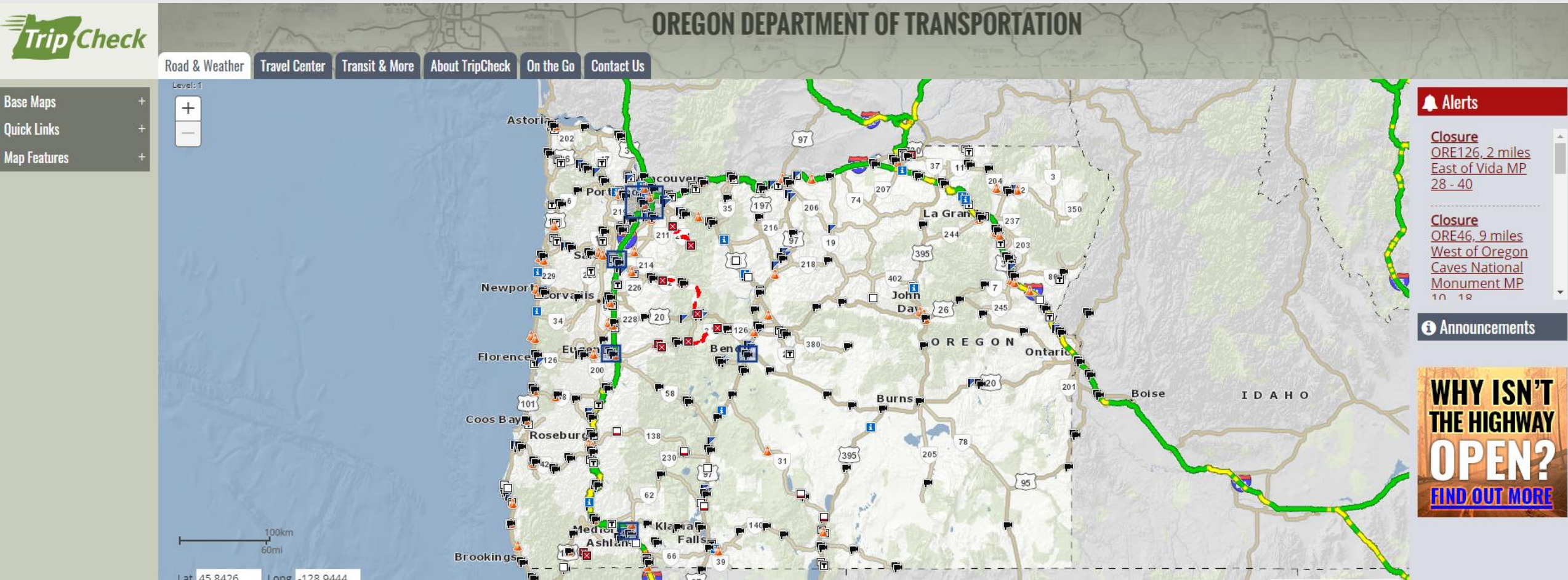
PHASE D: RESTORATION

- Hazardous Conditions Repaired
- Monitor Potential Trouble Areas

TRAFFIC RESTORED
Flaggers | Pilot Cars |
Lane Closures

TIMELINE:
Ongoing

Closure Status Maps



Wildfire Closure Status

Current as of 9/22/2020 12:00 PM

Highway Status

WILDFIRE CLOSURE

Level A
FULL CLOSURE/
EVALUATING DAMAGE

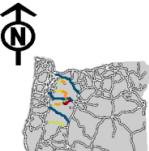
Level B
CRITICAL SERVICES

Level C
PARTIAL OPENING

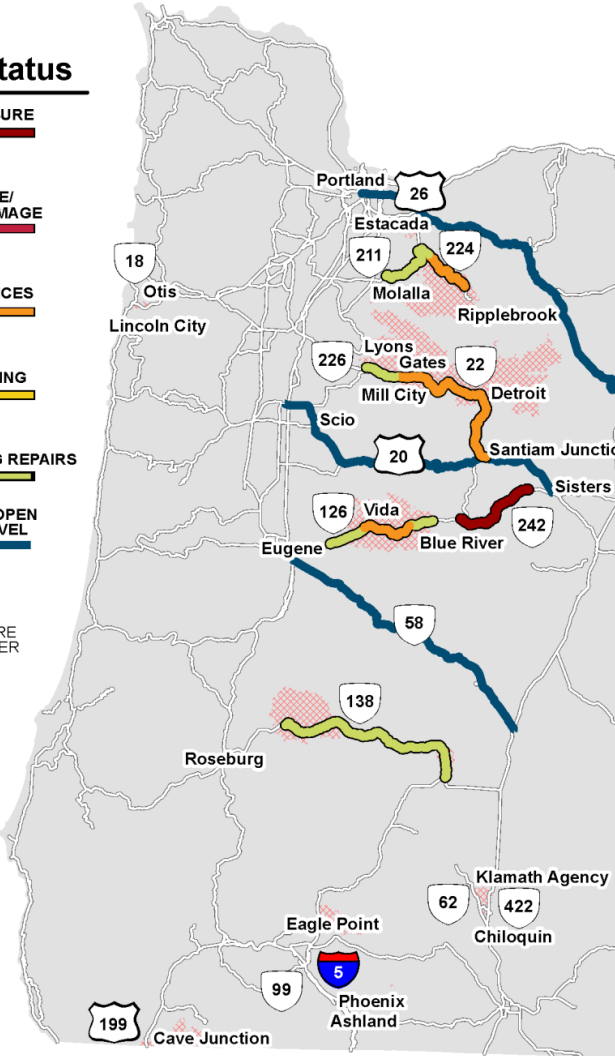
Level D
OPEN WITH ONGOING REPAIRS

MAJOR ROUTE OPEN
FOR W↔E TRAVEL

NWCC FIRE
PERIMETER



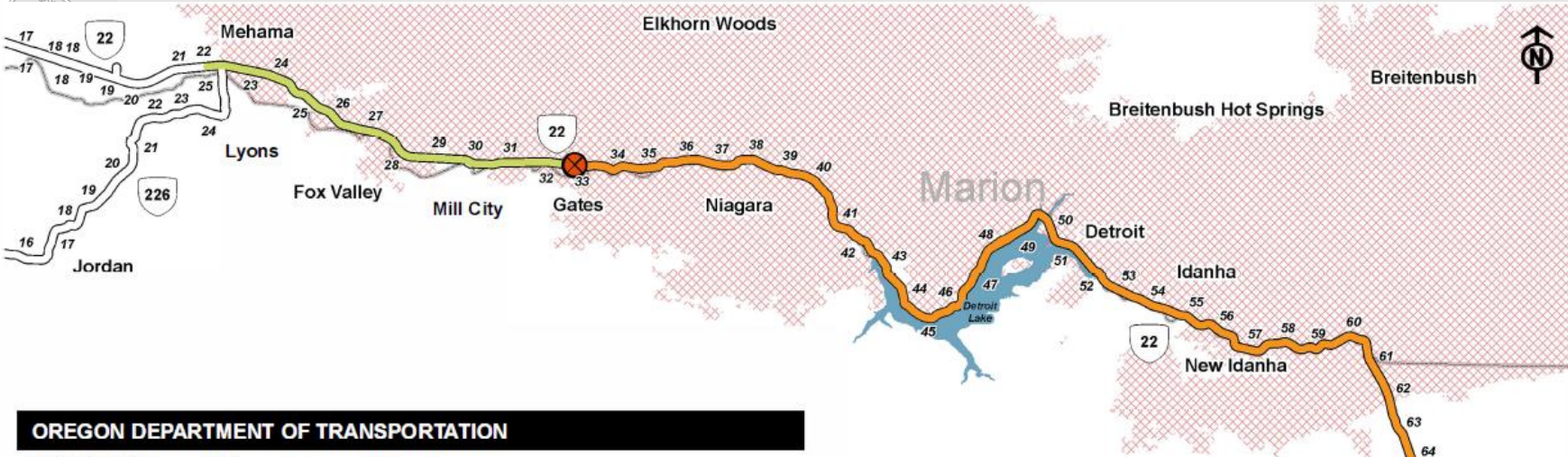
Statewide View + Status



Produced by ODOT GIS Unit - No. 11-13

This product is for informational purposes and may not be suitable for legal, engineering, or surveying purposes. Users of this product should review and consult the primary data sources to determine the usability of the information. Conclusions drawn from this information are the responsibility of the user.

Closure Status Maps



Wildfire Closure Status

Current as of 9/22/2020 12:00PM

OR-22 Corridor | Milepost 22 - 81

Highway Status

WILDFIRE CLOSURE

Level A
FULL CLOSURE/
EVALUATING DAMAGE

Level B
CRITICAL SERVICES

Level C
PARTIAL OPENING

Level D
OPEN WITH ONGOING REPAIRS

LEGEND

17
HIGHWAY ONE-MILE MARKER

CLOSURE CHECKPOINT

NWCC FIRE PERIMETER

Linn



Produced by ODOT GIS Unit - No. 11-13
This product is for informational purposes and may not be suitable for legal, engineering, or surveying purposes. Users of this product should review and consult the primary data sources to determine the usability of the information. Conclusions drawn from this information are the responsibility of the user.



OR 22: Beachie Creek Fire

Lyons, Gates, Mill City, and Detroit



OR 22: Beachie Creek Fire

Lyons, Gates, Mill City, and Detroit





OR 18: Echo Mountain Complex Fire Near Lincoln City

OR 138E: Archie Creek Fire

Between Glide and Diamond Lane



OR 224: Riverside Fire Between Estacada and Ripplebrook





OR 224: Riverside Fire Between Estacada and Ripplebrook

Multi-Agency Response



Multi-Agency Response



Transit Response



Reopening the Roads: After the Wildfires



PHASE A: EVALUATION

- Monitor Hazardous Conditions
- Emergency Services Access
- Evacuate Public

FULL CLOSURE

TIMELINE:
Depends on Nature of Hazard
Hours, Days or Weeks



PHASE B: CRITICAL SERVICES

- Remove High Priority Hazards
- Single Lane of Traffic
- Priority to Emergency Responders, Safety Personnel, Utilities

FULL CLOSURE
Emergency and Service Vehicles Only

TIMELINE:
Depends on Nature of Hazard
Hours, Days or Weeks



PHASE C: PARTIAL OPENING

- Remove Debris and Secondary Hazards
- Inspect System for Damage
- Partial Access to Public

TRAFFIC RESUMES
Flaggers | Pilot Cars | Lane Closures

TIMELINE:
Depends on Nature of Hazard
Days, Weeks or Months



PHASE D: RESTORATION

- Hazardous Conditions Repaired
- Monitor Potential Trouble Areas

TRAFFIC RESTORED
Flaggers | Pilot Cars | Lane Closures

TIMELINE:
Ongoing



THANK YOU