

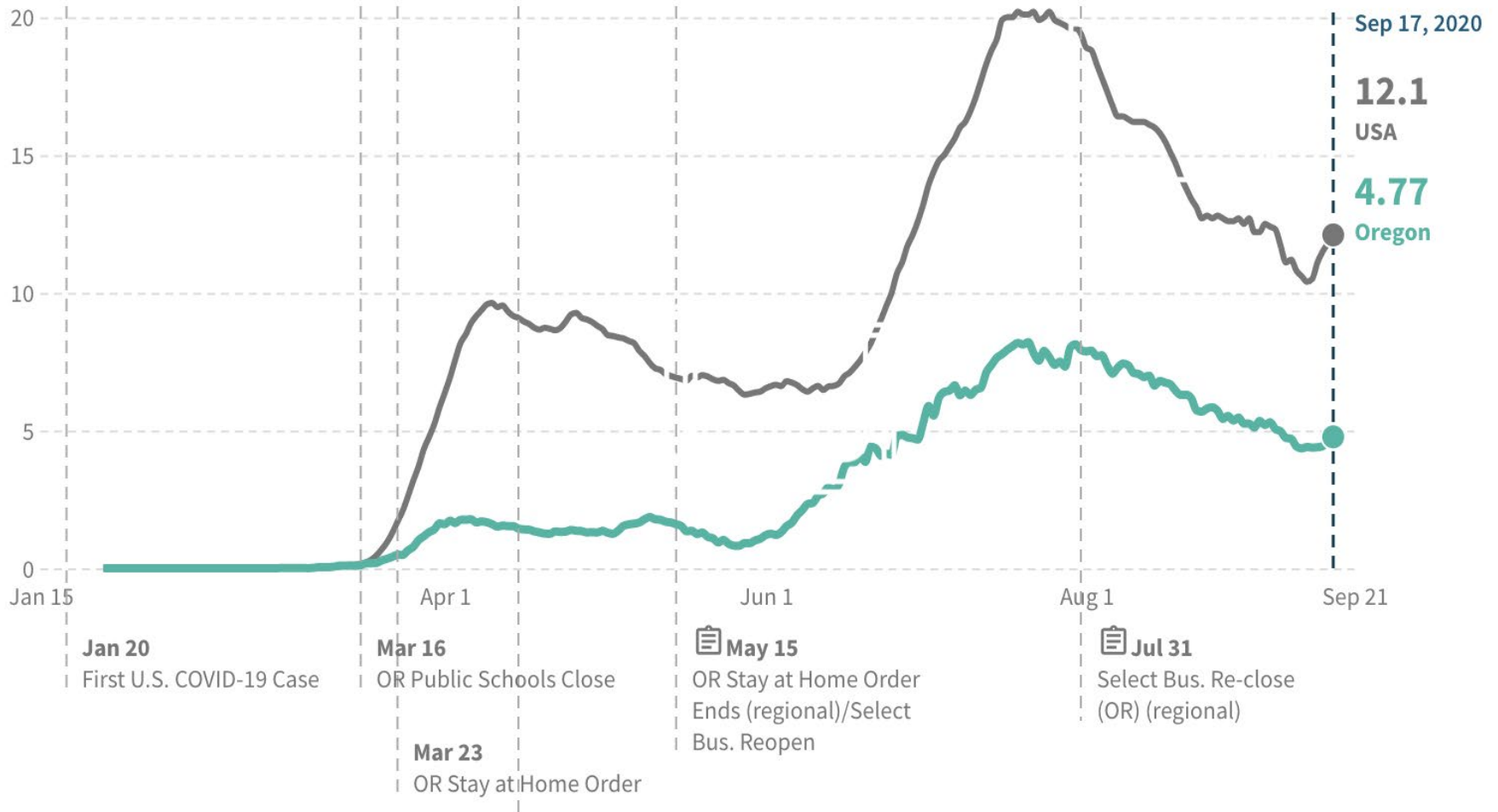
Reopening and the Path to Recovery

09/21/20 Update

ECONorthwest
ECONOMICS • FINANCE • PLANNING

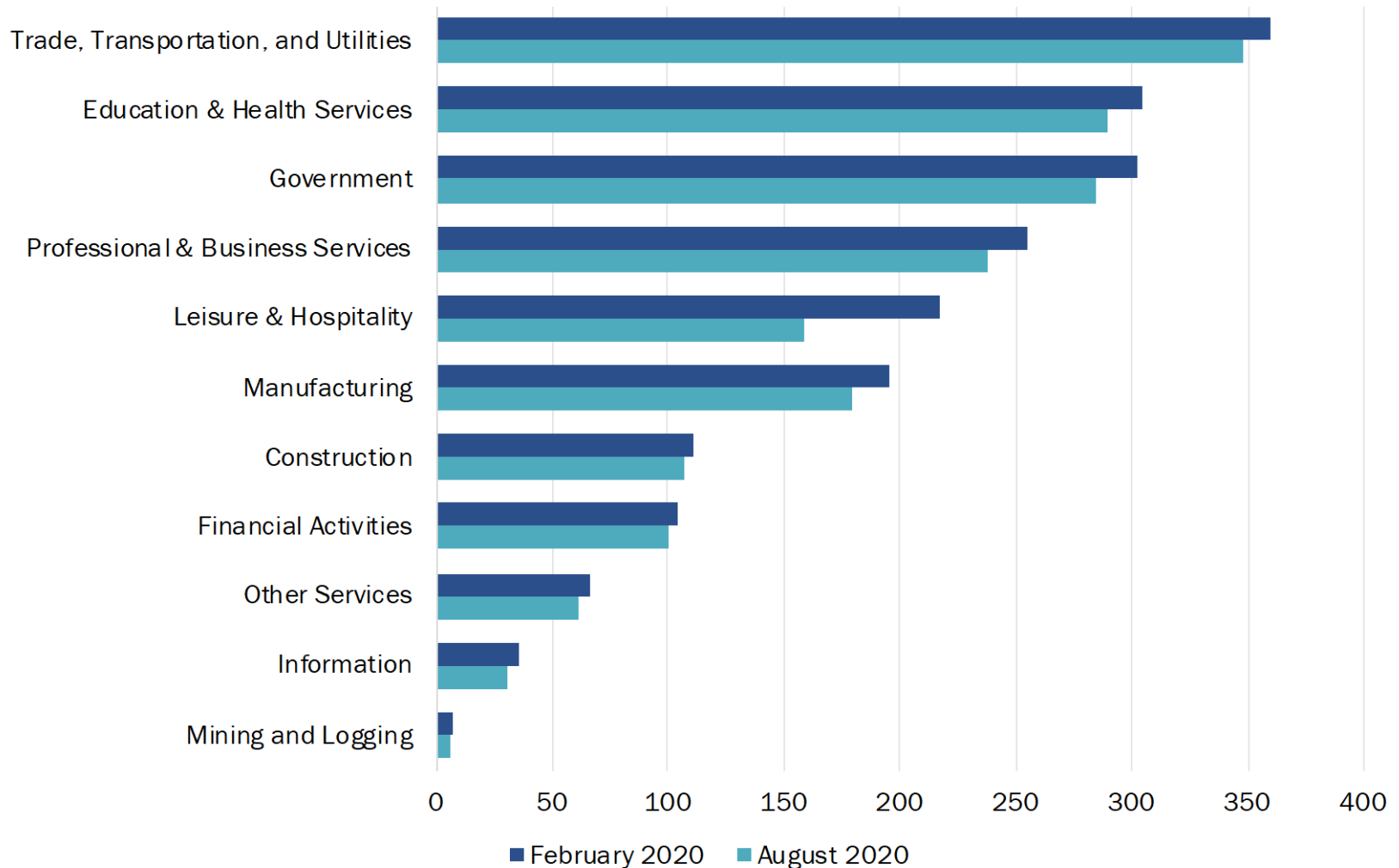
Daily Reported COVID-19 Cases per 100,000 People

In **Oregon**, on September 17 2020, there were **4.77** newly reported COVID-19 cases per 100,000 people.



Oregon's Total Employment by Supersector

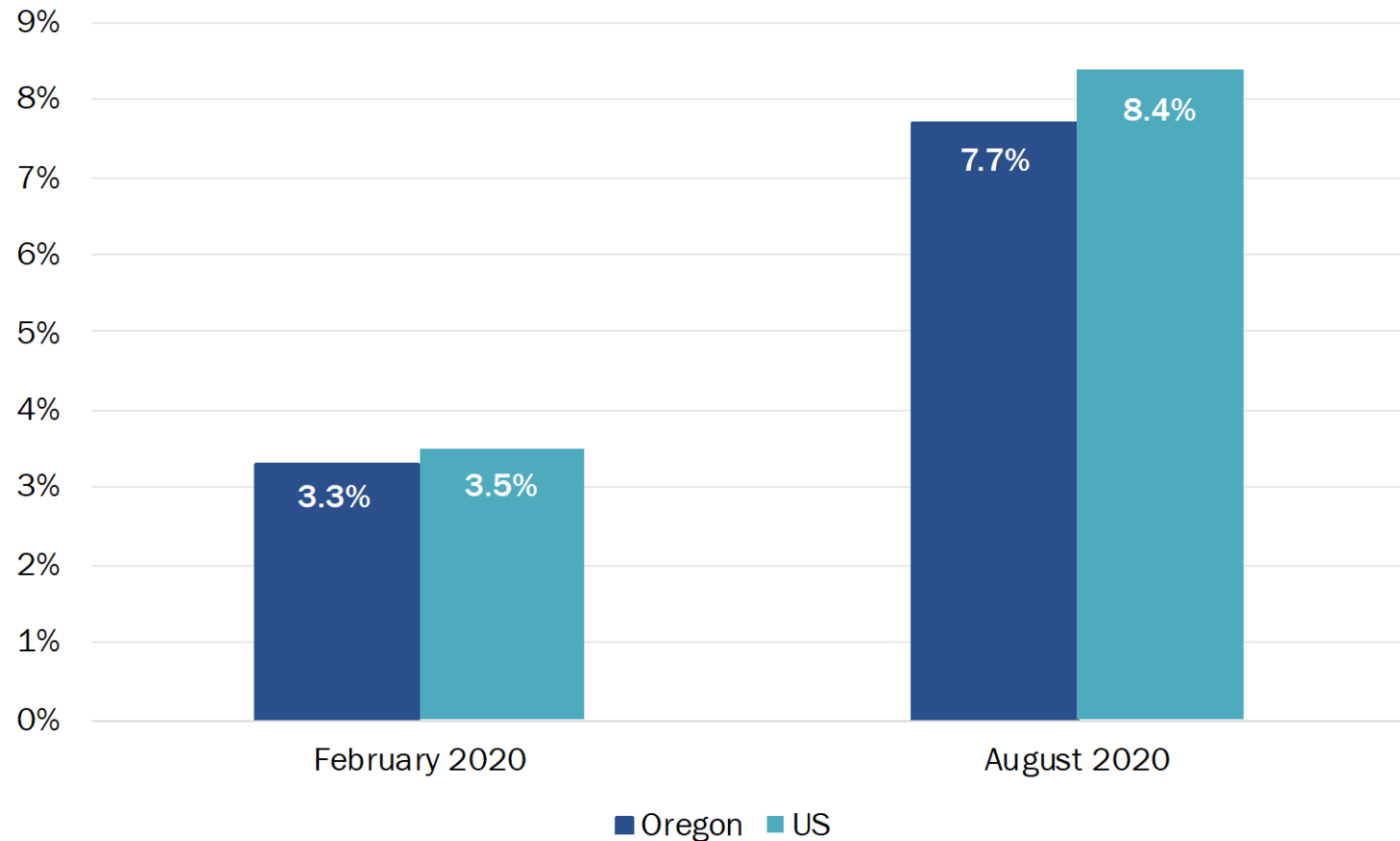
Total Number of Employees by Supersector, February and August 2020



Source: Bureau of Labor Statistics

Oregon's Unemployment Rate Lower than US

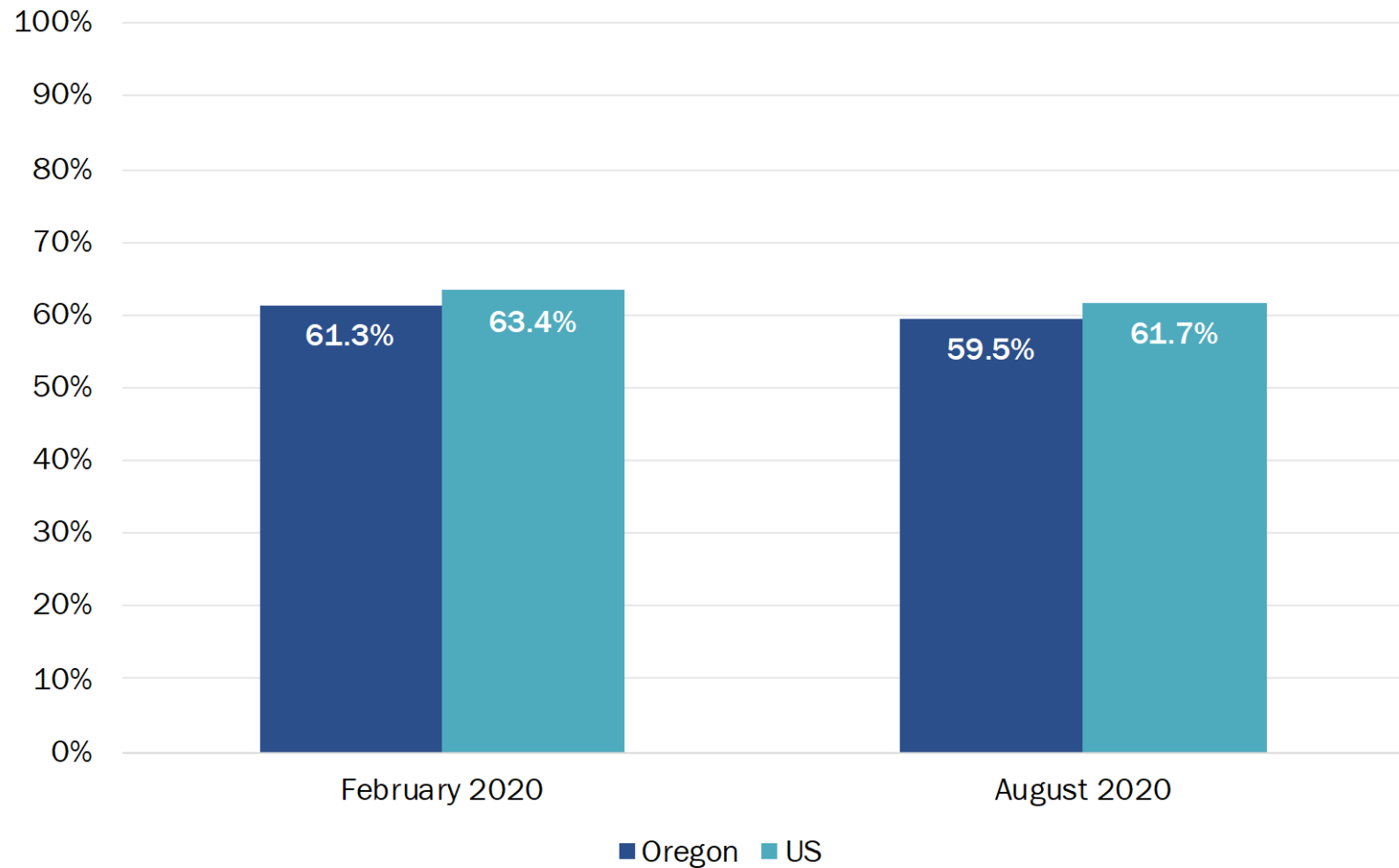
Unemployment Rate, Oregon and US, February and August 2020



Source: Bureau of Labor Statistics

US Labor Force Participation Rate Outpaces Oregon

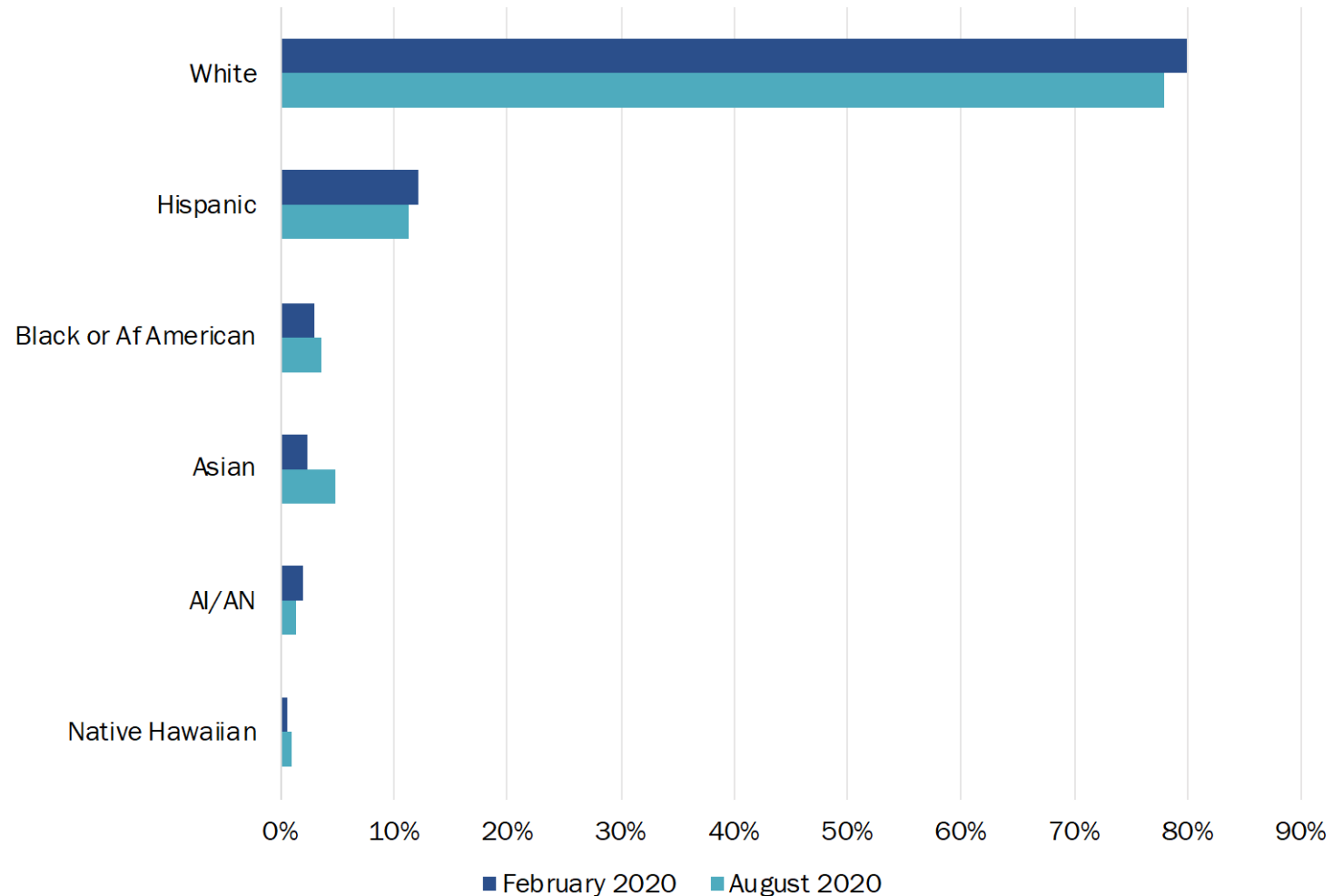
Labor Force Participation Rate, Oregon and US, February and August



Source: Bureau of Labor Statistics

Share of Continuing UI Claims by Race/Ethnicity

Oregon's Share of Continuing Unemployment Insurance (UI) Claims by Race and Ethnicity, February and August 2020

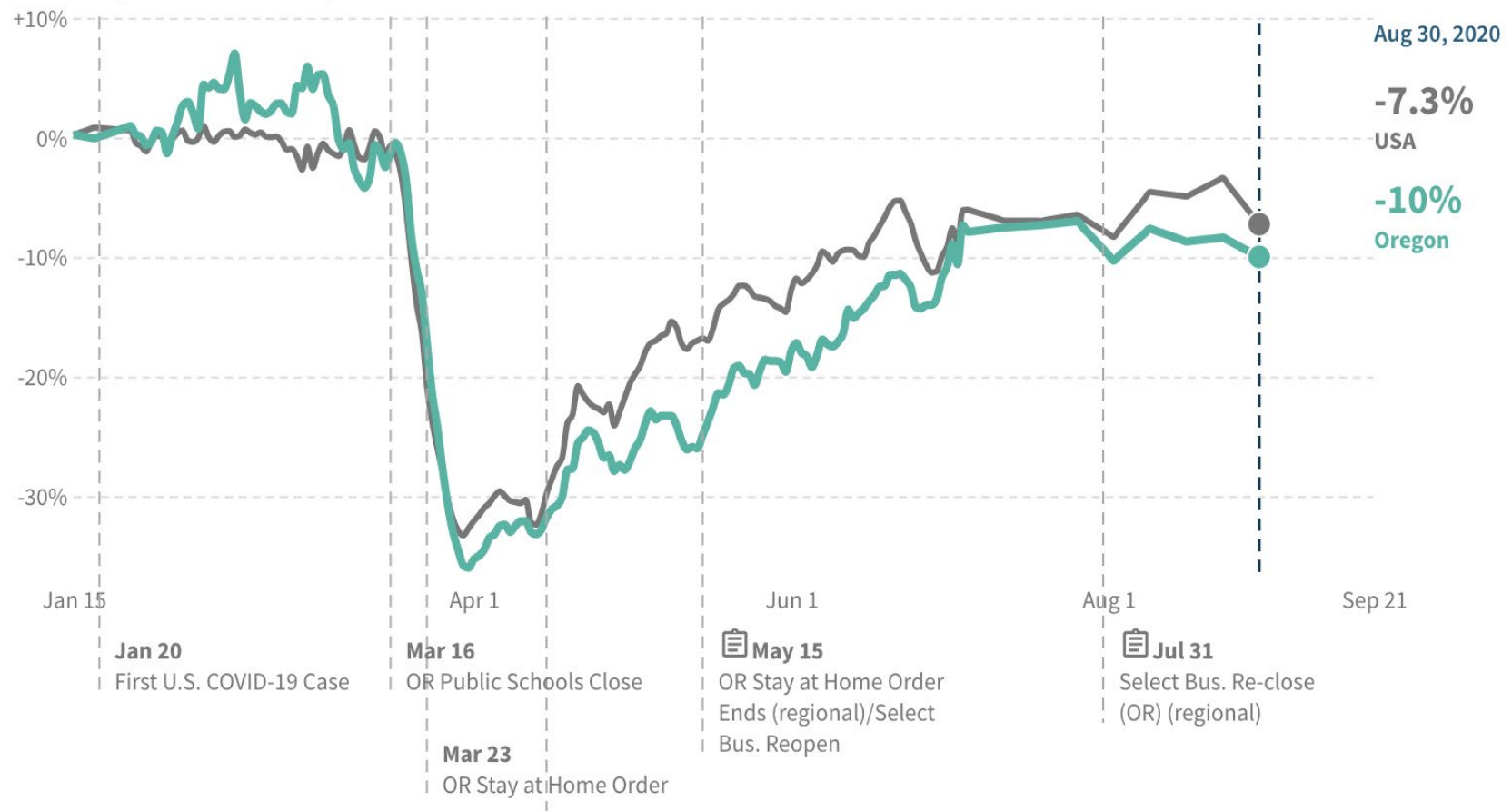


Source: Quality Info.

Oregon Consumer Spending Falling Behind US

Spending by All Consumers Relative to January 2020

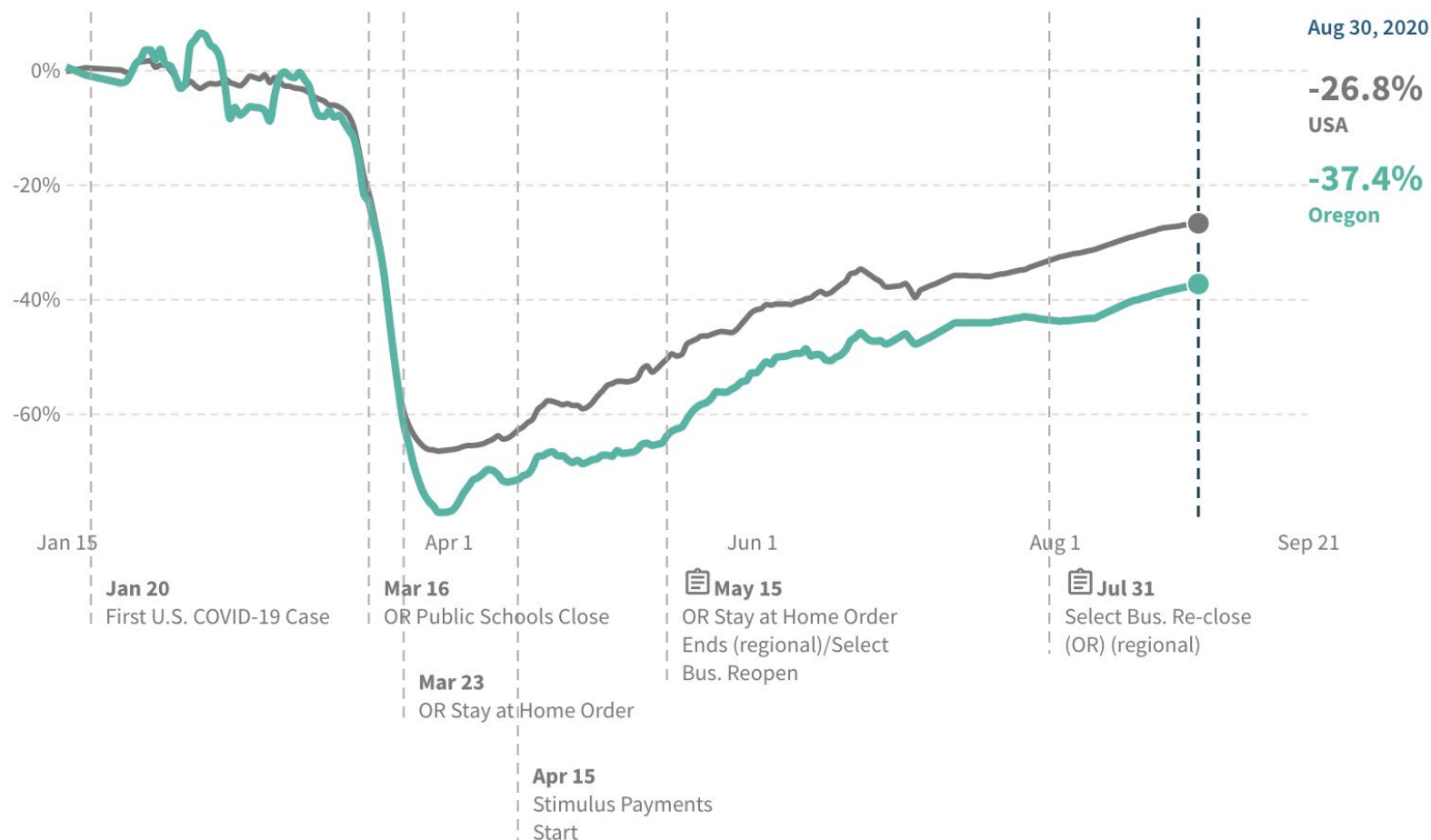
In **Oregon**, as of August 30, 2020, total spending by all consumers decreased by **10%** compared to January 2020.



Restaurant/Hotel Spending Below US Pace

Restaurant/Hotel Spending by All consumers Relative to January 2020

In **Oregon**, as of August 30 2020, restaurant and hotel spending by all consumers decreased by **37.4%** compared to January 2020.

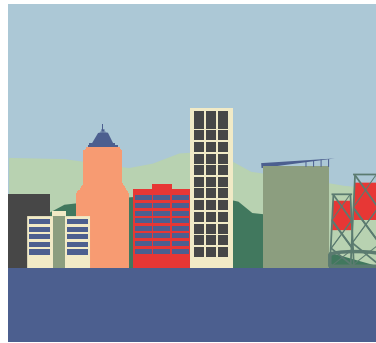


ECONorthwest

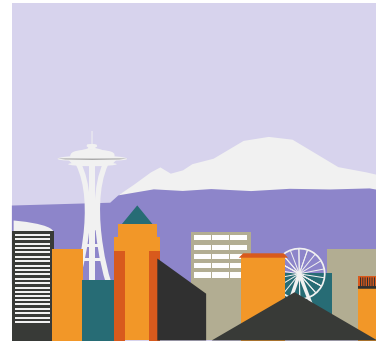
ECONOMICS • FINANCE • PLANNING



Eugene



Portland



Seattle



Boise