



# **2020 Fire Season Update**

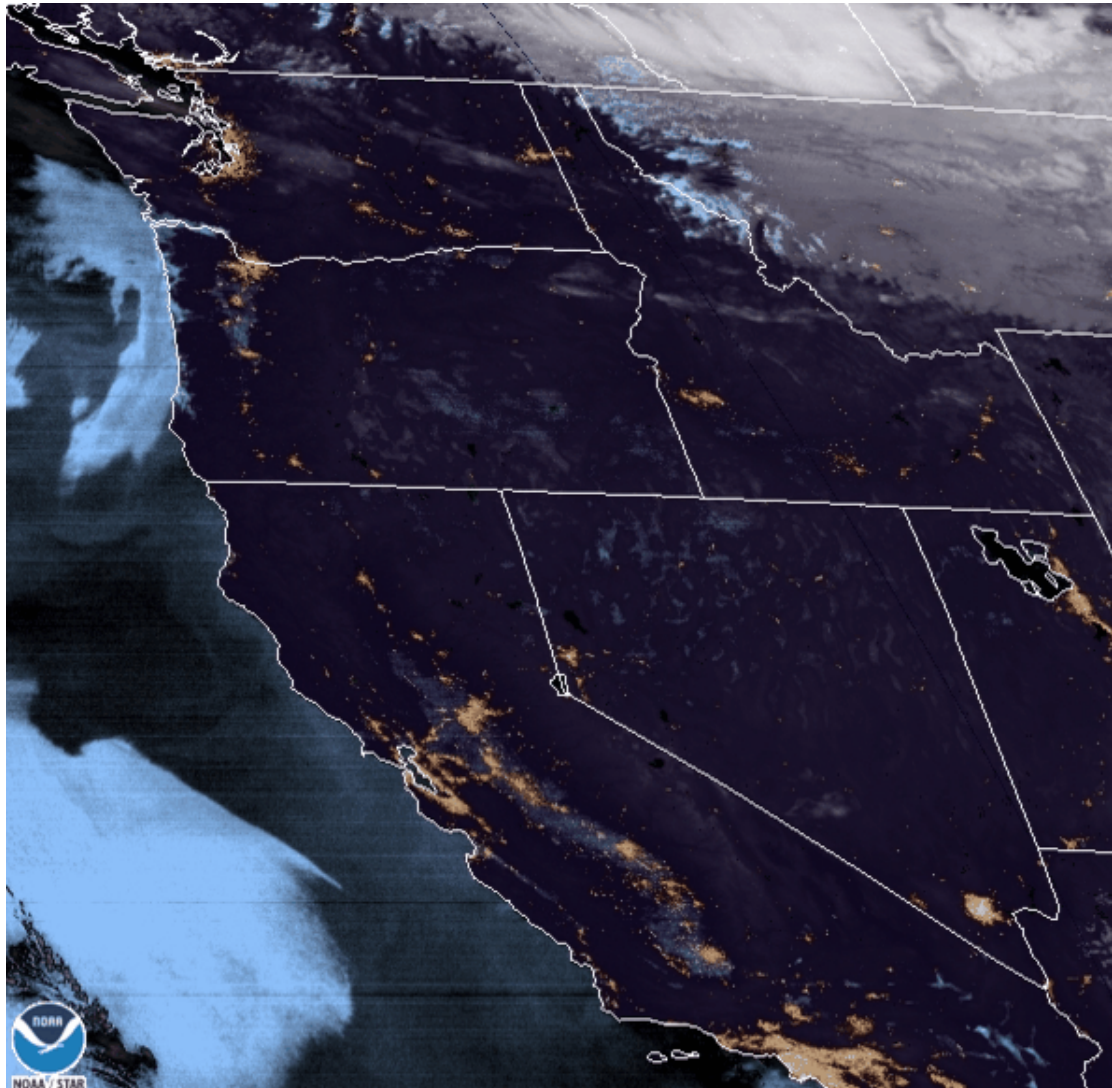
**September Legislative  
Days, 2020**

**Peter Daugherty, State Forester  
Doug Grafe, Chief of Fire Protection**



# Weather Phenomena - September 7<sup>th</sup> 2020

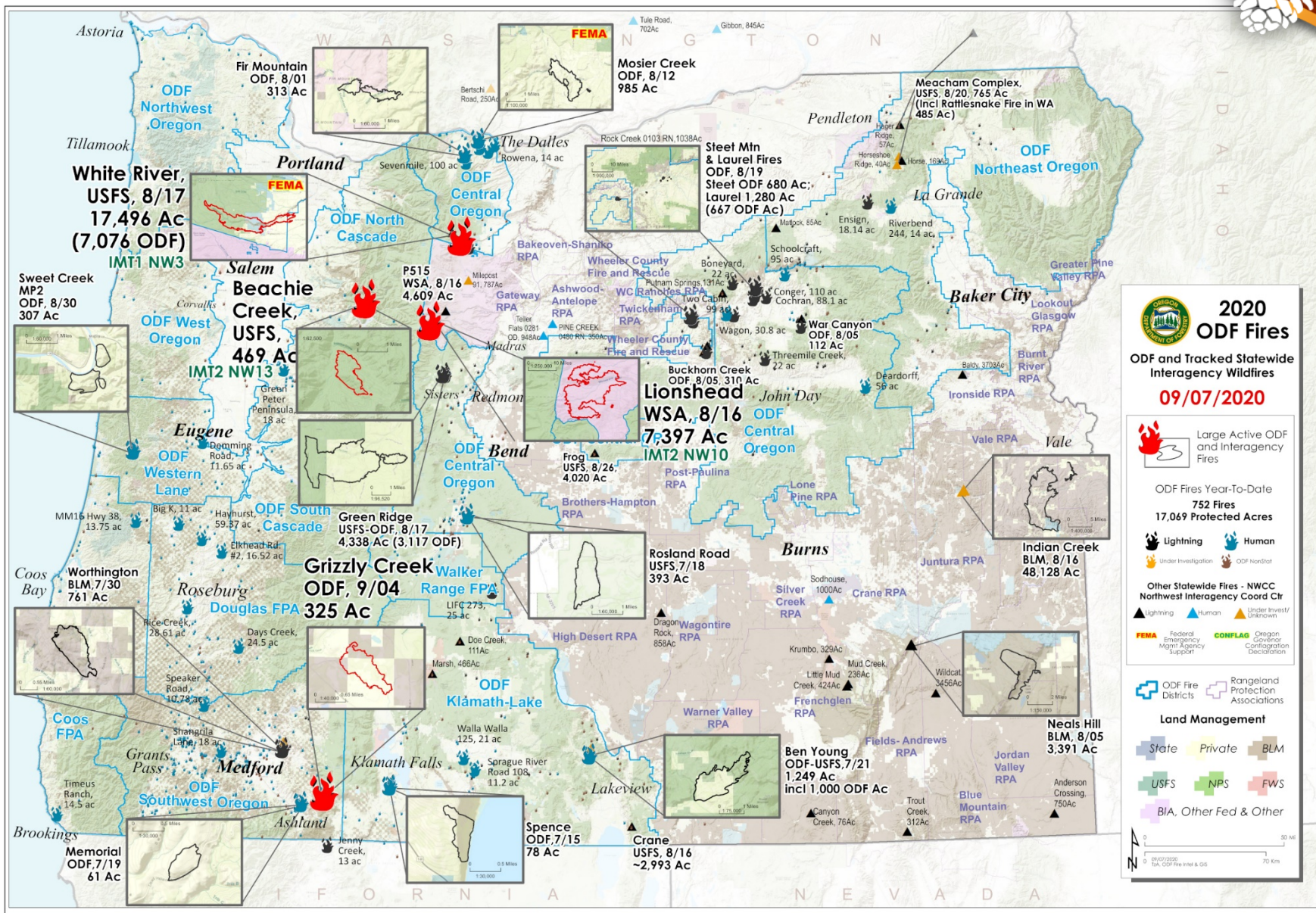
## “An Alignment of Forces”



07 Sep 2020 13:16Z NESDIS/STAR GOES-West GEOCOLOR



# Fire Map: Prior to Sept. 7th



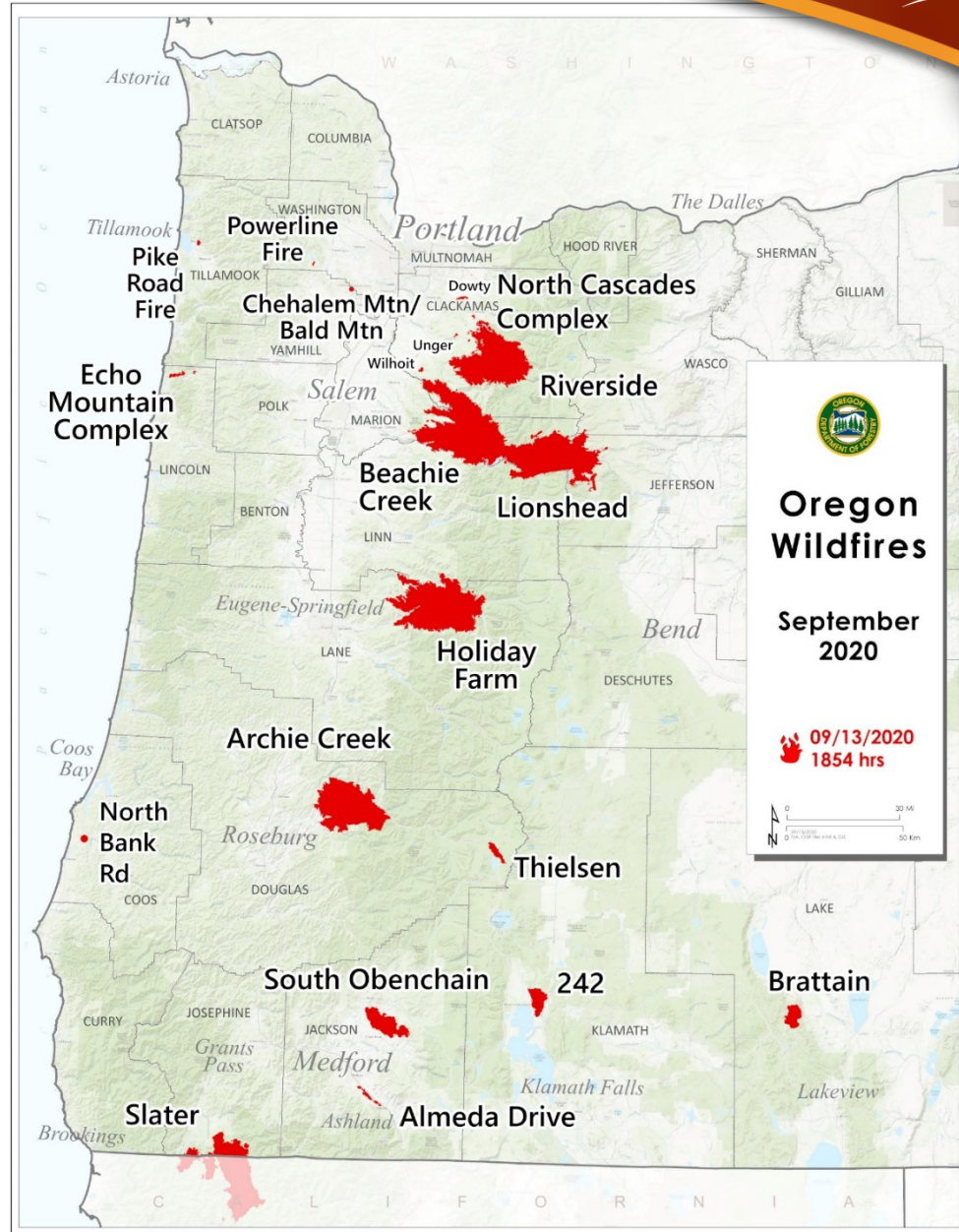




# Fire Briefing Map

**Post Sept. 7**

**After the historic  
weather event**





# Gross Costs YTD

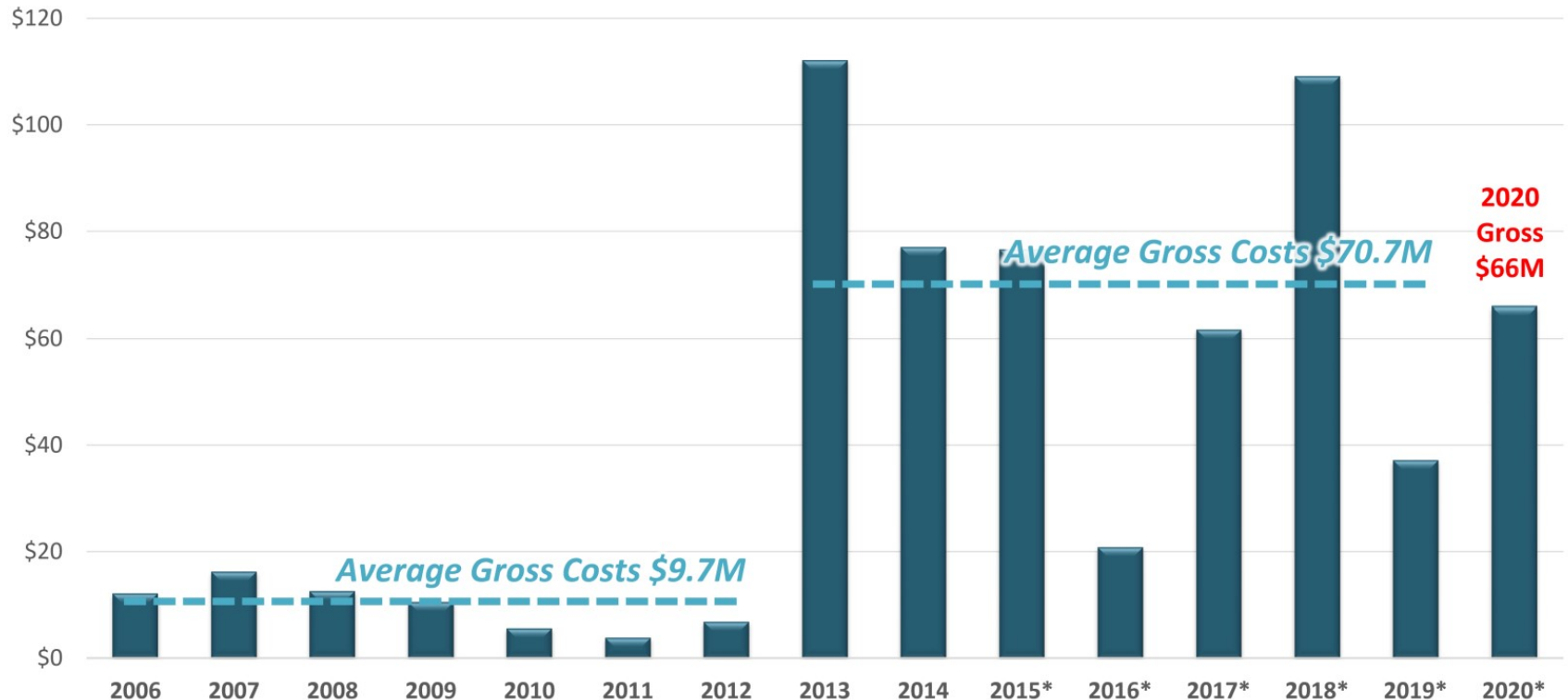


## ODF Large Fire Costs

ODF Protection Finance and EFCC Data 9/18/2020.

Values are gross costs by calendar year including non-jurisdictional fires for 2013-2020.

**Gross  
Costs**  
(Millions)



\*includes draft claims figures

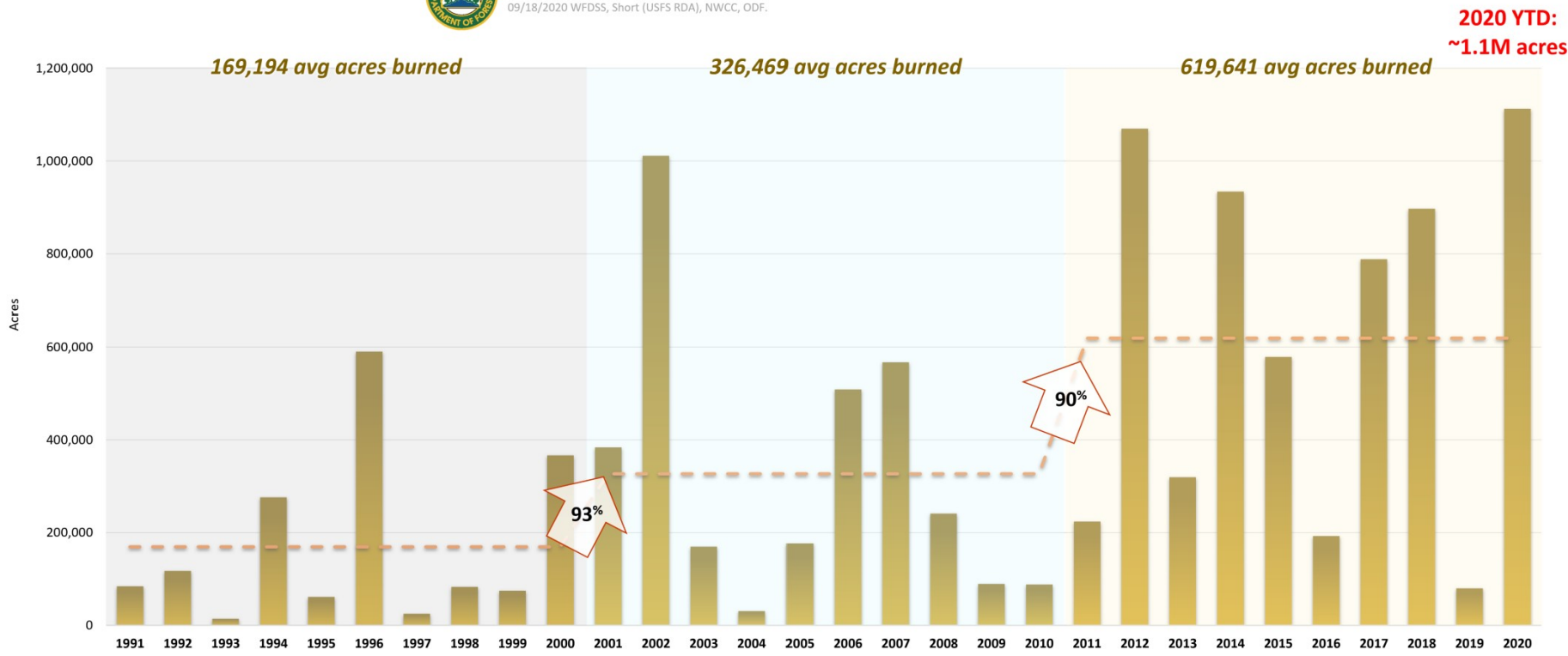




# Average Acres Burned by Decade



Oregon All Agencies - Average Acres Burned by Decade  
09/18/2020 WFDSS, Short (USFS RDA), NWCC, ODF.



2020 YTD:  
~1.1M acres





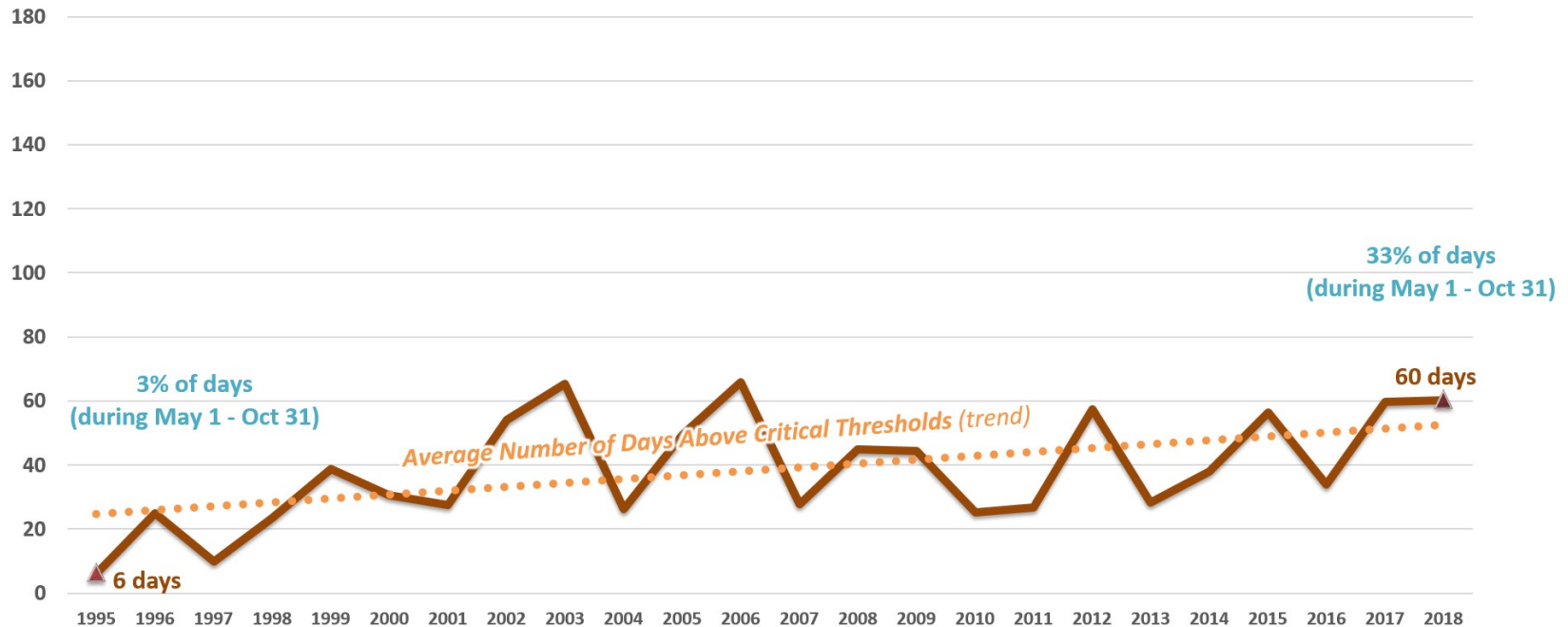
# Fire Season Severity Increasing Across OR



## Fire Season Severity - Average Number of Days of Exceeding Critical ERC Percentiles All ODF Fire Danger Rating Areas 1995-2018

Average number of days 1995-2018 where all ODF Fire Danger Rating Area (FDRA) ERC values exceeded locally-set critical percentile ERC thresholds. Data is from WIMS, dated May 1 - Oct 31 (184 days), although actual *declared* fire season dates vary per year.

**Fire Season Days  
(May 1 - Oct 31)**



The Energy Release Component (ERC) is an index from the National Fire Danger Rating System (NFDRS). ERC is related to how hot a fire could burn at the flaming front, based on cumulative drying of live and dead fuels. Through the fire season, as live fuels cure and dead fuels dry, ERC values increase, providing a good reflection of seasonal drying of fuels and drought conditions. The ERC can serve as a good characterization of fire season as it tracks seasonal fire danger trends well. Fuel loading, woody fuel moistures, and larger fuel moistures all have an influence on the ERC. ERC has low variability, and is the best fire danger component for indicating the effects of intermediate to long-term drying on fire behavior. For more information: [http://gacc.nifc.gov/oscc/predictive/fuels\\_fire-danger/psa\\_nfdrrs/ercindex.html](http://gacc.nifc.gov/oscc/predictive/fuels_fire-danger/psa_nfdrrs/ercindex.html)



# Looking Forward



## Governor's Wildfire Council

- ODF personnel capacity has grown little in past 3 decades
- Environmental Conditions expected to worsen in future

## Response and Mitigation:

- Large Fire Funding Fix – A structural funding challenge
- Fire Fighting Capacity
- Mitigating the Fire Risk – Policy Advancements

## Recovery:

- Forestry Recovery
- Private Forest Investment Programs
- Santiam State Forests





# **Thank You**

## **Questions?**

**Peter Daugherty, State Forester**  
**Doug Grafe, Chief of Fire Protection**