



2020 Fire Season Update

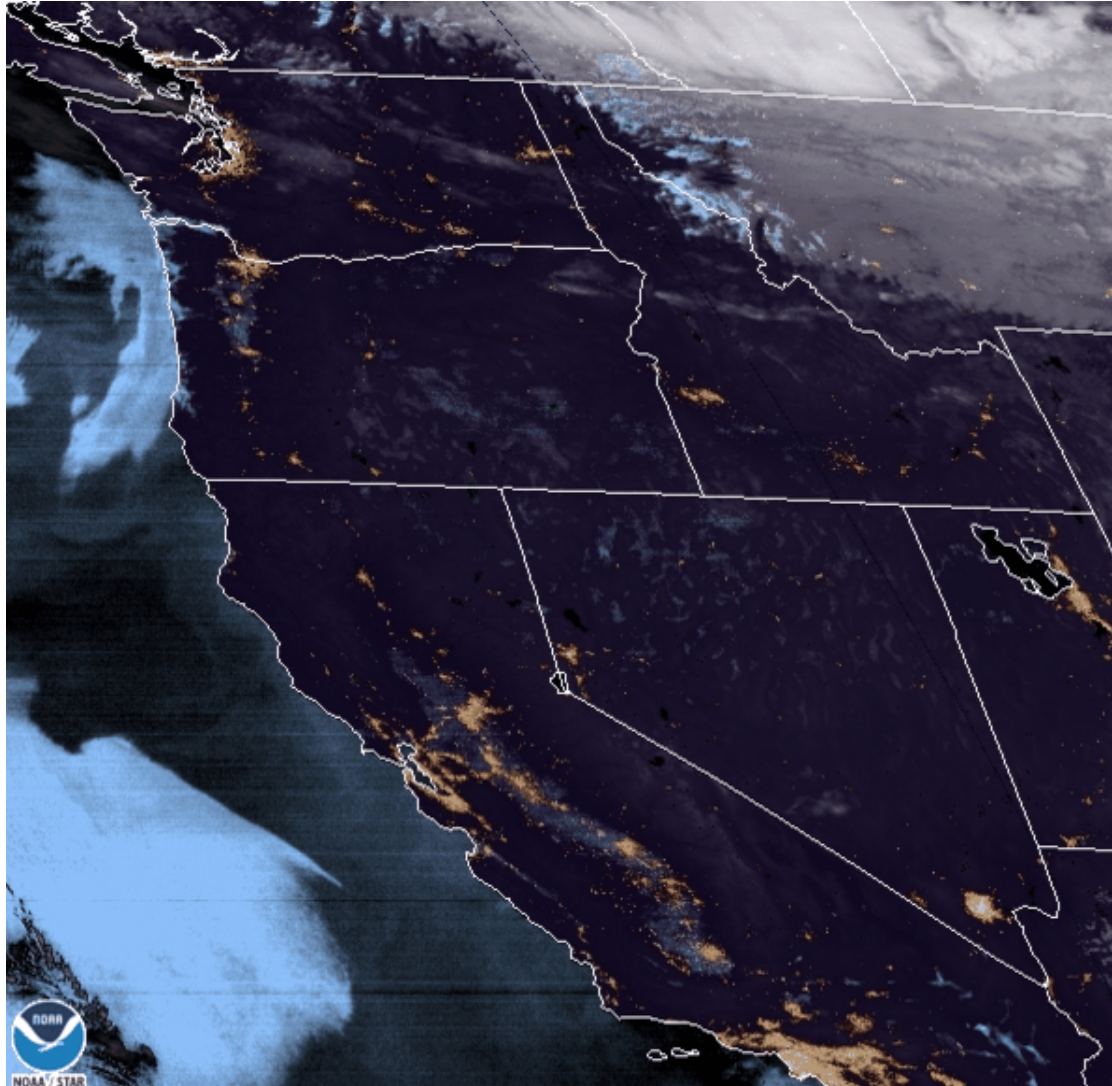
September 2020 Legislative Days

Peter Daugherty, State Forester
Doug Grafe, Chief of Fire Protection



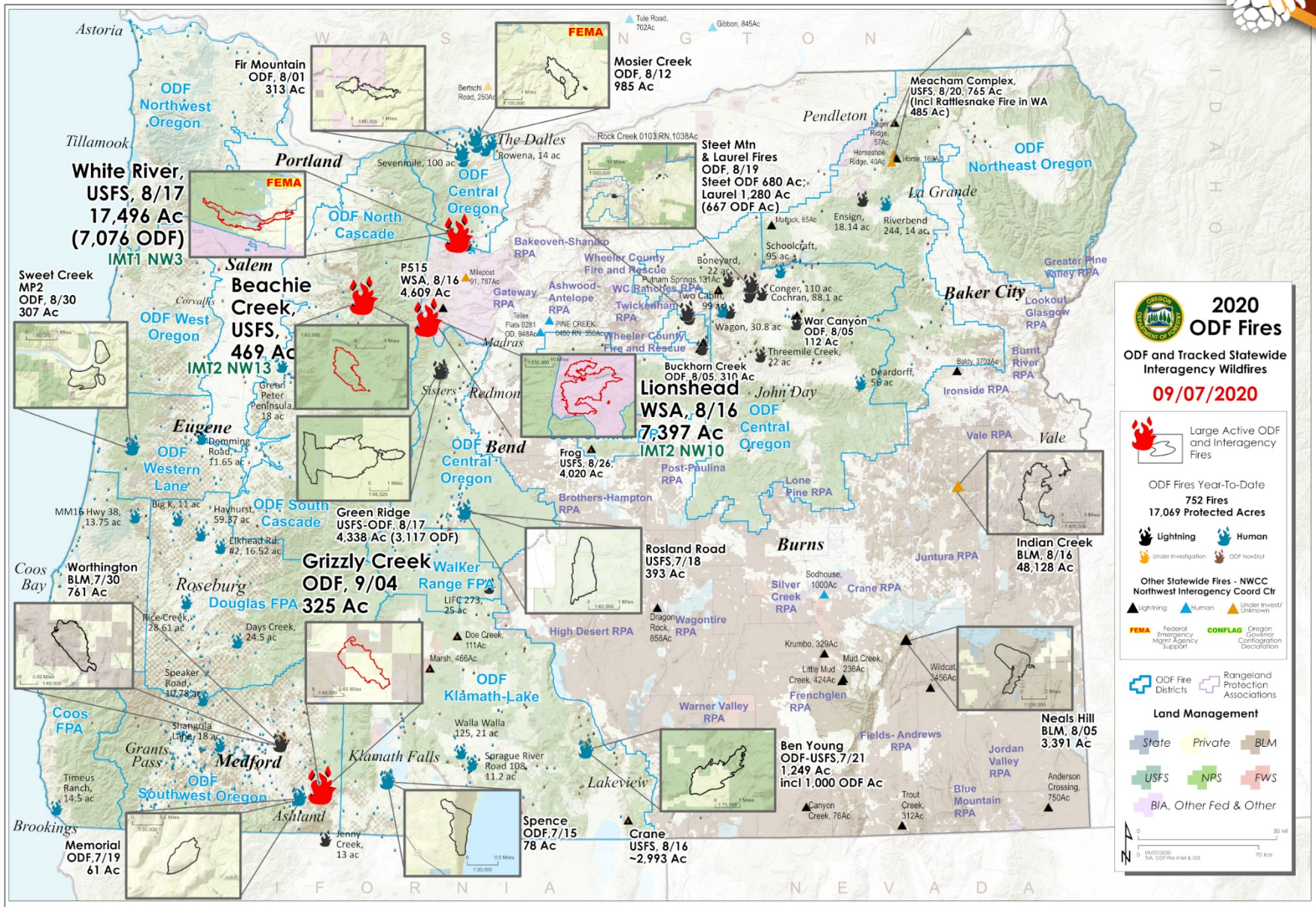
Weather Phenomena - September 7, 2020

"An Alignment of Forces"



07 Sep 2020 13:16Z NESDIS/STAR GOES-West GEOCOLOR

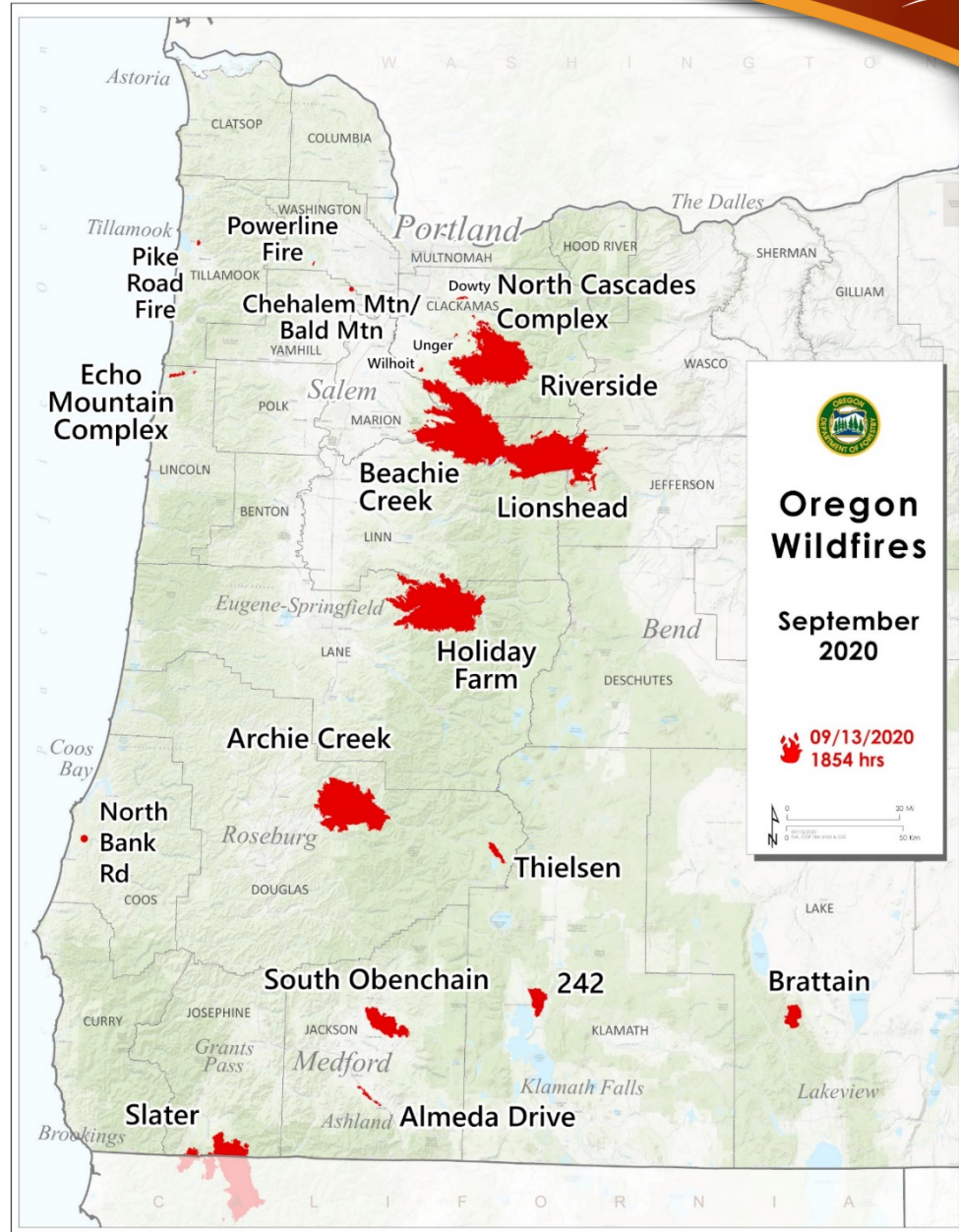
Fire Map: Prior to Sept. 7





Fire Briefing Map

Post Sept. 7



Gross Costs YTD

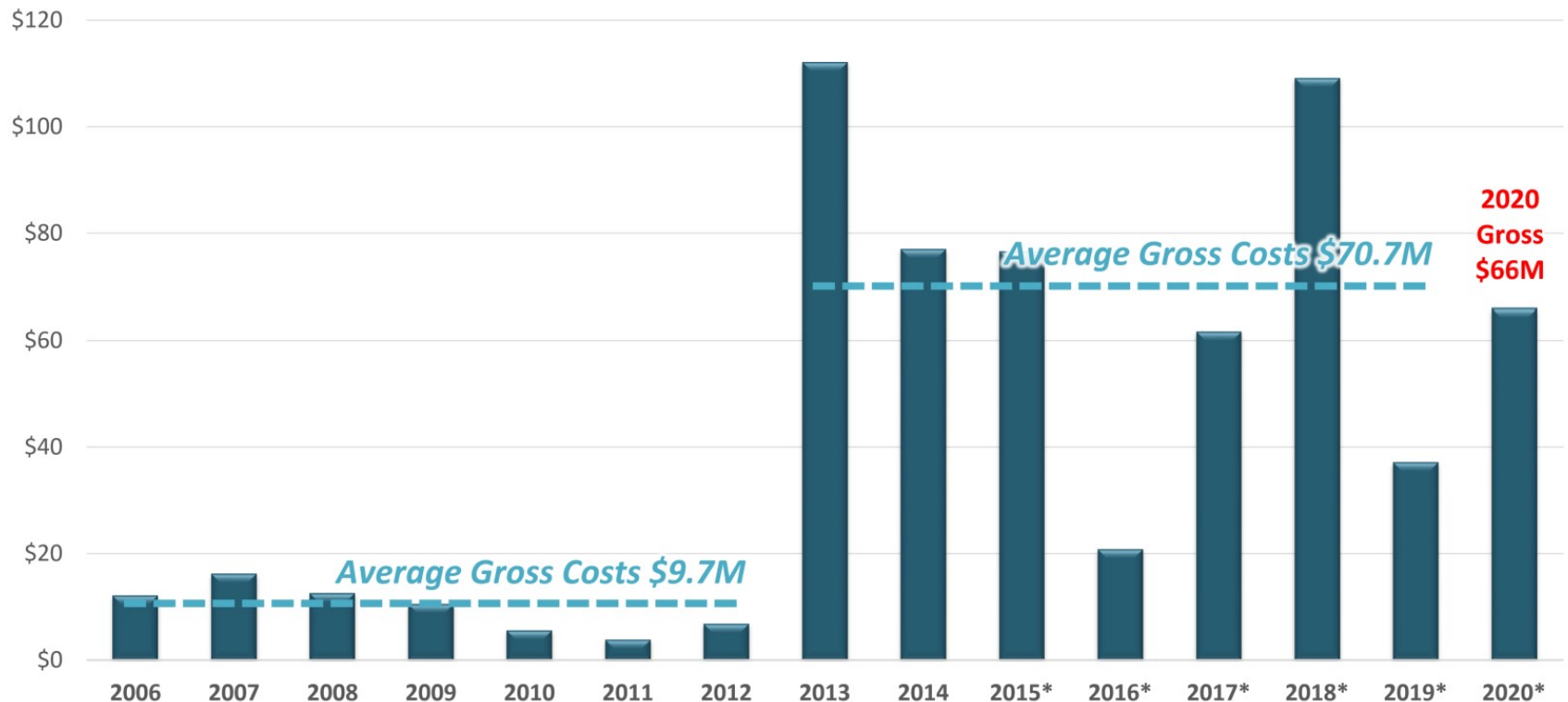


ODF Large Fire Costs

ODF Protection Finance and EFCC Data 9/18/2020.

Values are gross costs by calendar year including non-jurisdictional fires for 2013-2020.

**Gross
Costs**
(Millions)



*includes draft claims figures



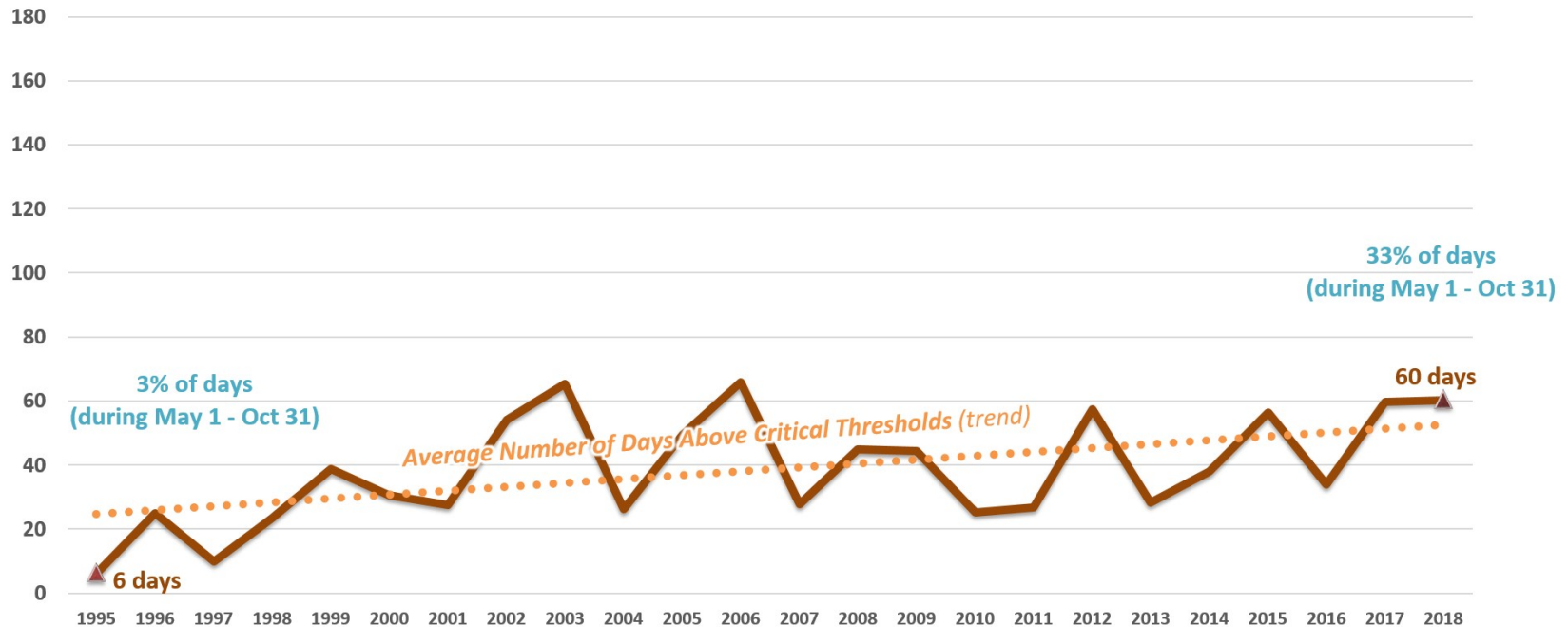
Fire Season Severity Increasing Across OR



Fire Season Severity - Average Number of Days of Exceeding Critical ERC Percentiles All ODF Fire Danger Rating Areas 1995-2018

Average number of days 1995-2018 where all ODF Fire Danger Rating Area (FDRA) ERC values exceeded locally-set critical percentile ERC thresholds. Data is from WIMS, dated May 1 - Oct 31 (184 days), although actual *declared* fire season dates vary per year.

**Fire Season Days
(May 1 - Oct 31)**



The Energy Release Component (ERC) is an index from the National Fire Danger Rating System (NFDRS). ERC is related to how hot a fire could burn at the flaming front, based on cumulative drying of live and dead fuels. Through the fire season, as live fuels cure and dead fuels dry, ERC values increase, providing a good reflection of seasonal drying of fuels and drought conditions. The ERC can serve as a good characterization of fire season as it tracks seasonal fire danger trends well. Fuel loading, woody fuel moistures, and larger fuel moistures all have an influence on the ERC. ERC has low variability, and is the best fire danger component for indicating the effects of intermediate to long-term drying on fire behavior. For more information: http://gacc.nifc.gov/oscc/predictive/fuels_fire-danger/psa_nfdri/ercindex.html



Looking Forward

Recovery

- Restoring Oregon's Forests
- Private Forest Investment Programs
- Santiam State Forest

Governor's Wildfire Council Recommendations

- Response: Large Fire Funding Fix and Firefighting Capacity
- Creating Resilient Forests and Reducing Fire Risk
- Fire and Smoke-Adapted Communities



Thank You

Questions?

Peter Daugherty, State Forester
Doug Grafe, Chief of Fire Protection