

Pacific Power, Portland General Electric and Idaho Power 2020 Wildfire Season Preparation

June 5, 2020

Scott Bolton, *Senior Vice President, External Affairs & Customer Solutions*



FOUNDATION OF PLANS

Established strategies for wildfire risk mitigation

Be situationally aware of environmental risks

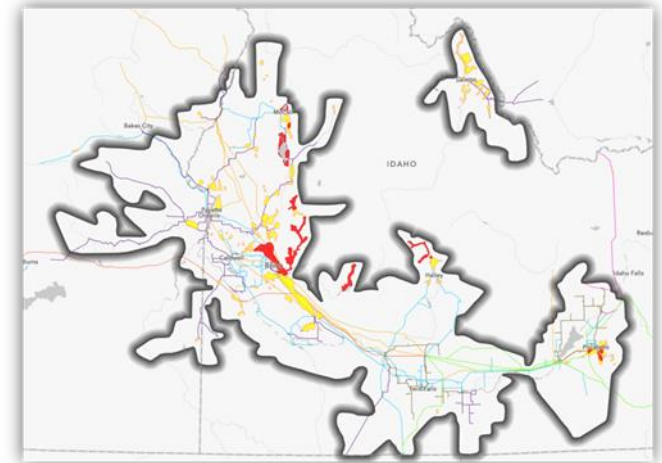
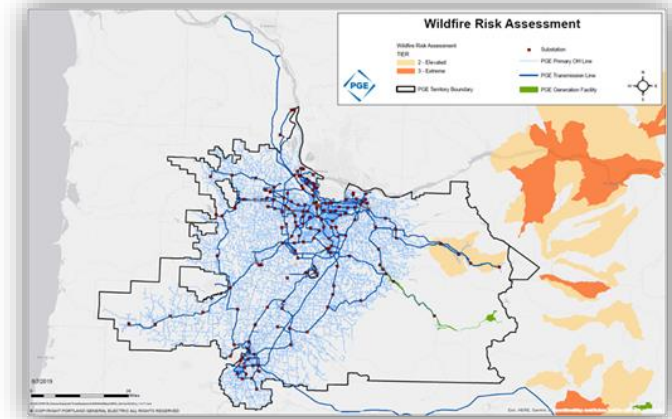
- Monitor fire weather conditions
- Implement various operational strategies during fire risk periods
- Increase collaboration & coordination with public safety partners

Ensure facilities are resilient to limit potential for ignition

- Enhanced inspection programs & accelerate certain condition corrections
- Enhance vegetation management practices
- Deploy covered conductor

React rapidly to fault events that limit arc-energy created

- Deploy more sensitive protective coordination equipment
- Replace certain fuse locations with non-expulsion equipment



2020 FIRE SEASON

Visual Inspections and Corrections

- Focus on high fire risk areas
- Embedded into the on-going program

Advanced Vegetation Inspections

- Strengthened partnerships (e.g. US Forest Service)
- Inspection of FHCA circuits
- Pole Clearing

Resiliency Projects to Reduce Fire Risk

- Ductile iron poles
- Fiberglass cross arms

Risk Modeling Enhancements

- Leveraged approach developed by CA based electric utilities
- Enhancing models to enable rational, prioritized and prudent wildfire risk mitigation program

Operational Practices

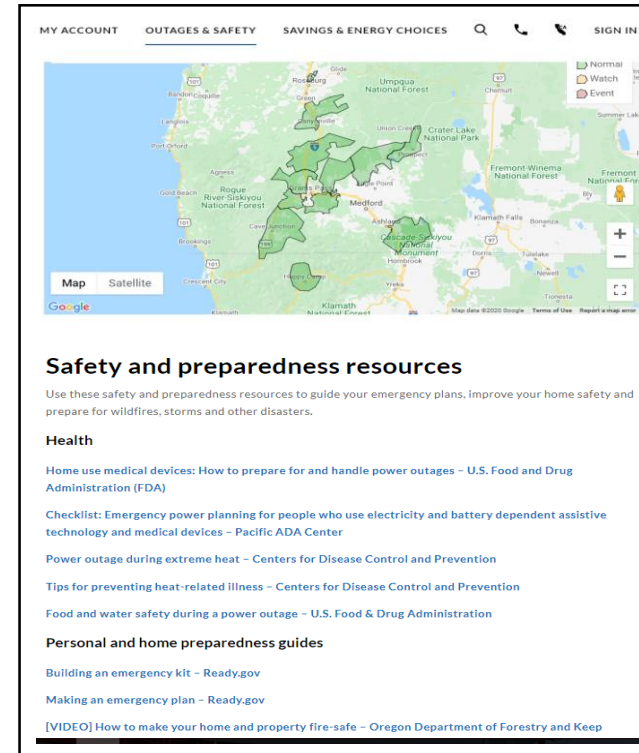
- Additional fire program team expertise (e.g. meteorologist)
- Wildfire refresher training conducted with field employees
- No test energize policy during red flag warning days



COMMUNITY OUTREACH

Customer Communication Wildfire Mitigation and Safety

- ✓ Advertising
 - Print
 - Radio
 - Digital
 - Social
- ✓ Media outreach
- ✓ Bill Inserts
- ✓ Webinars
- ✓ Informational sheets
- ✓ Resource center on websites



COVID-19 PANDEMIC

Customer Impacts

- Minimization of planned outages where possible
- Social distancing when interacting with customers / public
- Suspension of disconnects due to non-payment

Project Impacts

- Some customer driven projects have shifted or been cancelled
- Evaluation of company driven projects to determine if requirements have changed

Material Impacts

- Availability of certain material has been impacted (arrestors)
- However the bulk of the 2020 wildfire mitigation work remains unaffected at this time

Resource Impacts

- Contracting resources becoming available with the change in the economic outlook
- Internal employees using “social-distancing” / pod-management / working from home
- Monitoring crew travel destinations and adjusting work schedules
- Remote training / meetings

Questions?

