

Covid-19 & Higher Education

Robin Baker, President of George Fox University





Alliance Members



Alliance Affiliates



Immediate Challenges

- Shifting to online
- Adjusting instruction
- Finances
- Enrollment



Compounding Challenges

Further compounding financial and instruction challenges is uncertainty surrounding fall opening, timing and enrollment. If students are unable to return to campus this fall, all higher education potentially faces what could be extraordinary attrition.

One Alliance School Predicts a...

-12%

Drop in Retention

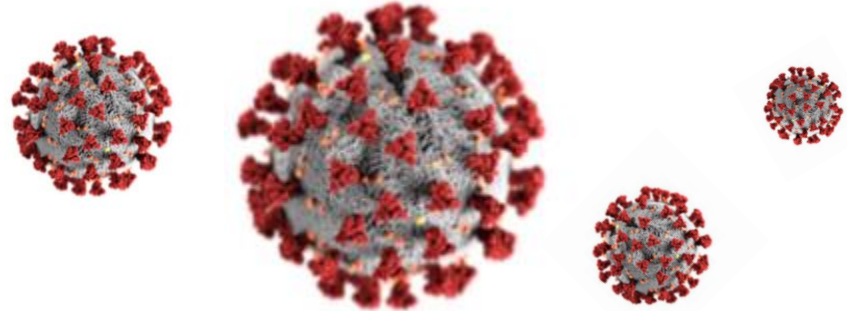
-22%

Drop in Incoming Freshmen

-27%

Drop in Transfer Students

Alliance Responses To The Pandemic



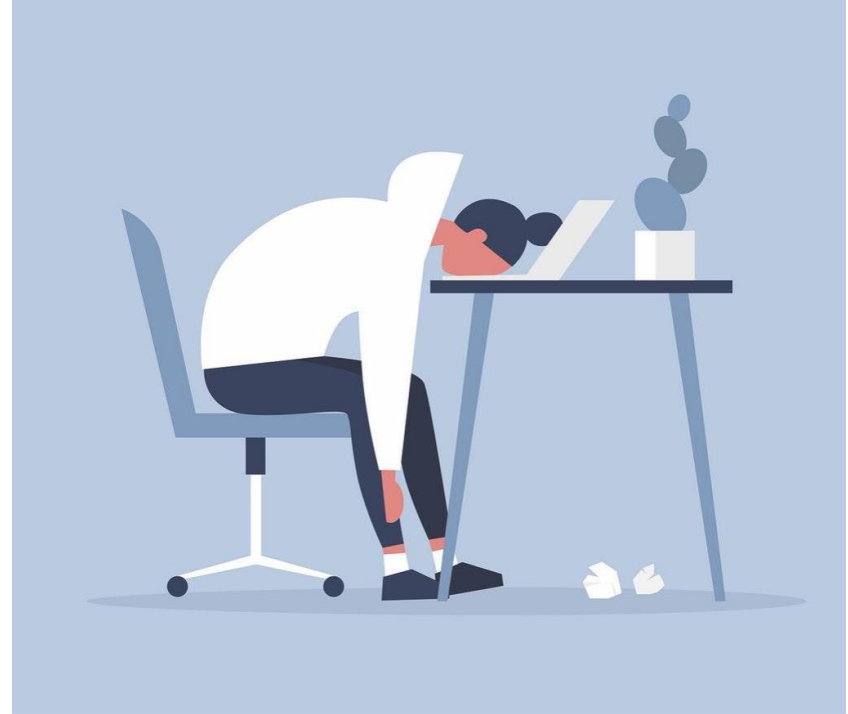
- Extended spring break for preparations
- Online learning for spring
- Zoom licensing
- Transitioned experiential learning / lab work
- Course delivery
- Residential changes



Challenges

Remote Environments

- Student Home Environments
- Student Finances
- Loss of Connections and Closure

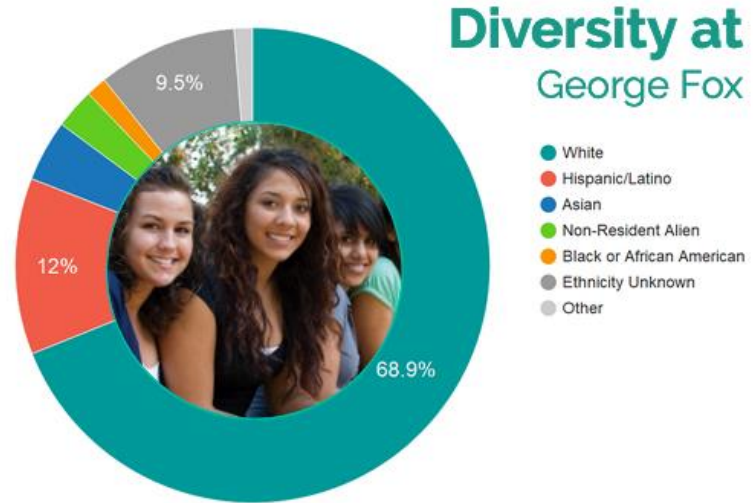


Supporting Students

At George Fox, we have an economically diverse student body, with roughly 30% of our undergraduate students receiving Pell grants. We will support these and other vulnerable students by:

- Paying out more than \$50,000 in institutional funds to aid-eligible work-study students who were prevented from working by the virus,
- Distributing more than \$90,000 in institutional funds to cover financial emergencies through student emergency funds

Distributing \$2.5 million in funds from the





BUDGET ISSUES

- Room and board refunds
- Auxiliary revenue
- Costs with transition
- Decontamination
- Fundraising paralysis
- Unemployment insurance



BUDGET IMPACT

- Fall enrollment decline
 - Safety costs
 - Lost Revenue
 - Rooming returns
- = Employment impacts



Employee Impact

> 500

Institutions with under 500 employees are participating in the Paycheck Protection Program, which allows them to retain their pre-COVID-19 staffing levels for 8 weeks.

< 500

Institutions who have over 500 employees and are therefore ineligible to participate in the Paycheck Protection Program.

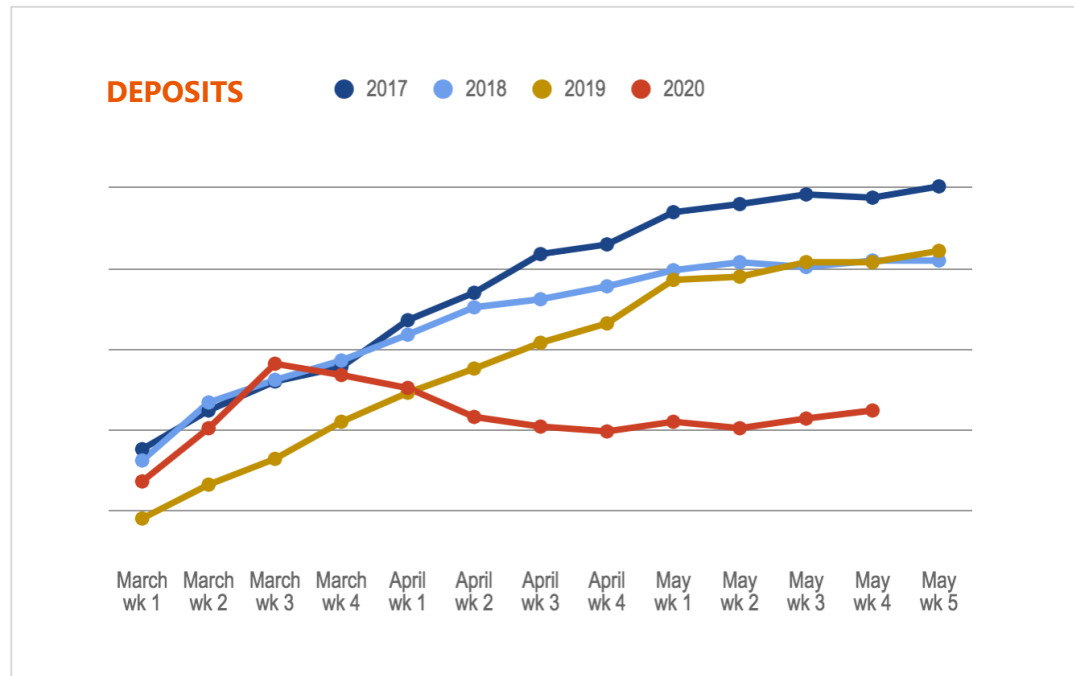
80

Willamette University is furloughing 80 employees for two months and laying off 37 workers.



Looking Ahead Enrollment

Nearly every Alliance institution extended its deposit deadline for incoming freshmen from May 1 to June 1. Therefore, it is difficult to definitively determine how enrollment will be impacted in the fall. Here is one institution's enrollment figures.



Looking Ahead

- Planning
- Safety
- Changes to the norms
- Quality education





Policymaker Help Points....

- 1) OHA/HECC guidance finalized
- 2) Self-funded unemployment insurance assistance
- 3) Provide some kind of liability protections



Thank you.

These are difficult times, but we are determined to carry on and we appreciate your support.

