

Covid-19 & Higher Education

Miles Davis, President of Linfield University





Alliance Members



Alliance Affiliates





Overview



The Alliance is the voice of Oregon's independent, non-profit higher education sector, actively supporting the success of our member colleges and universities, their students, and alumni.

The mission of Oregon Alliance is to represent and serve its 15 member institutions, all of which are regionally accredited, nonprofit, private colleges and universities in Oregon.



Immediate Challenges

- Shifting to online
- Adjusting instruction
- Finances
- Enrollment



Compounding Challenges

Further compounding financial and instruction challenges is uncertainty surrounding fall opening, timing and enrollment. If students are unable to return to campus this fall, all higher education potentially faces what could be extraordinary attrition.

One Alliance School Predicts a...

-12%

Drop in Retention

-22%

Drop in Incoming Freshmen

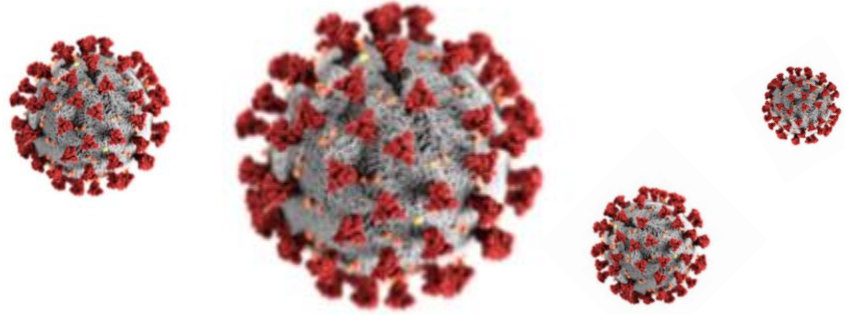
-27%

Drop in Transfer Students



Alliance Responses To The Pandemic

- Extended spring break for preparations
- Online learning for Spring
- Zoom licensing



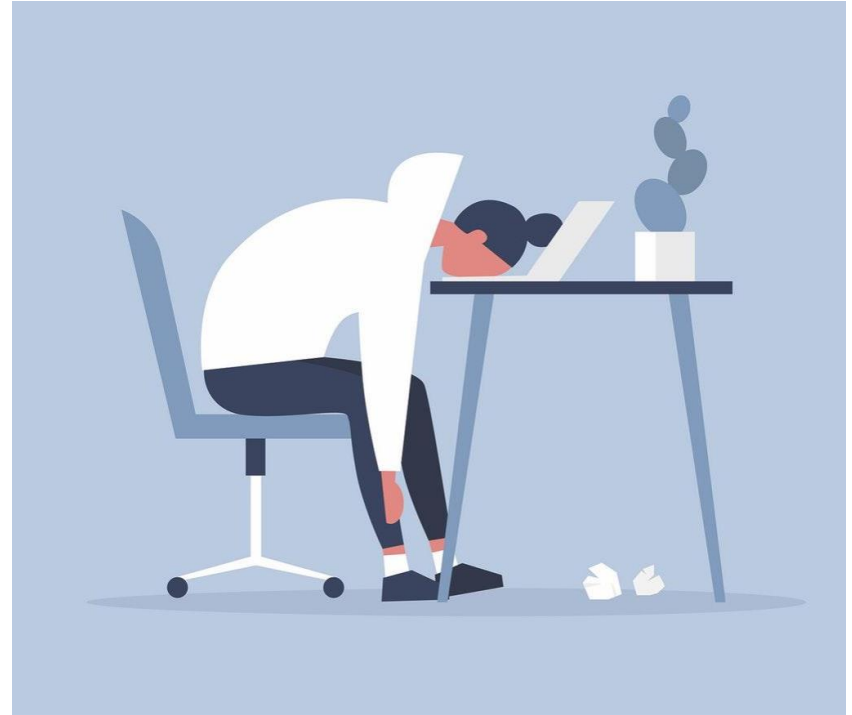
- Transitioned experiential learning / lab work
- Course delivery
- Residential changes



Challenges

Remote Effects

- Student Home Environments
- Student Supports
- Student Connections





At Linfield

- 60% of Linfield students are part of the new majority
- COVID has a disproportionate impact
- Latinx population
- Education is a social determinant of health
- Employment contribution expectations



BUDGET ISSUES

- Room and board refunds
- Auxiliary revenue
- Costs with transition
- Decontamination
- Fundraising
- Unemployment insurance



BUDGET IMPACT

- Enrollment decline
 - Safety costs
 - Lost Revenue
 - Rooming returns
- = Employment impacts



Employee Impact

> 500

Institutions with under 500 employees are participating in the Paycheck Protection Program, which allows them to retain their pre-COVID-19 staffing levels for 8 weeks.

< 500

Institutions who have over 500 employees and are therefore ineligible to participate in the Paycheck Protection Program.

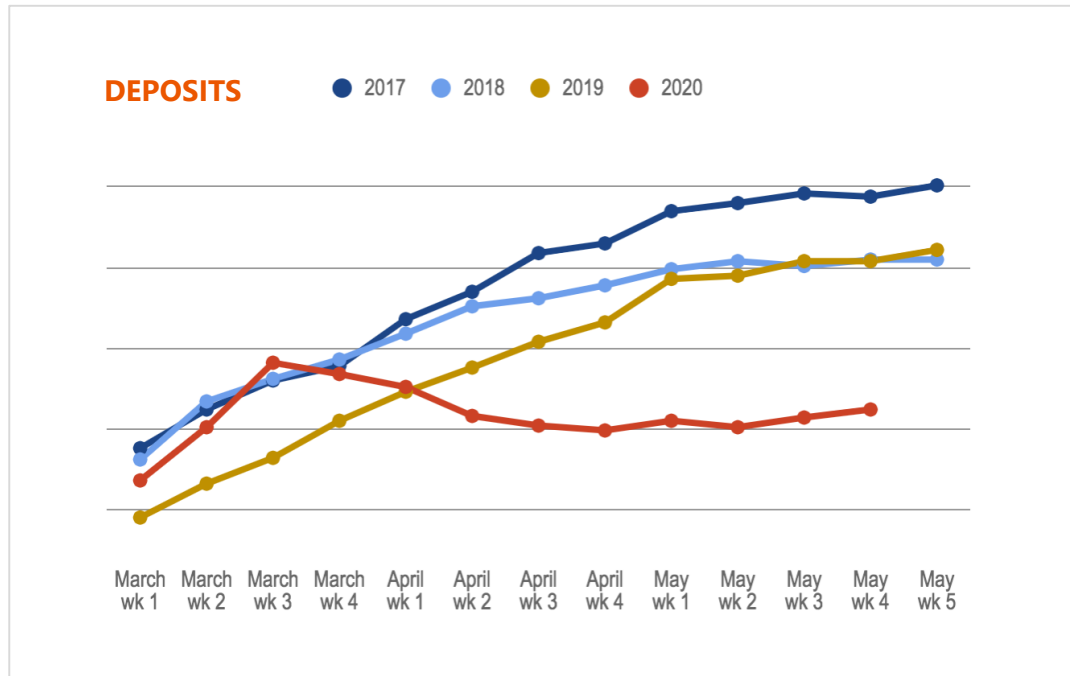
80

Willamette University is furloughing 80 employees for two months and laying off 37 workers.



Looking Ahead Enrollment

Nearly every Alliance institution extended its deposit deadline for incoming freshmen from May 1 to June 1. Therefore, it is difficult to definitively determine how enrollment will be impacted in the Fall. Here is one institution's enrollment figures.





Looking Ahead

- Planning
- Safety
- Changes to the norms
- Quality education





Policymaker Help Points....

- 1) OHA/HECC guidance finalized
- 2) Self-funded unemployment insurance assistance
- 3) Provide some kind of liability protections



Thank you.

These are difficult times, but we are determined to carry on and we appreciate your support.

