



2019 *Annual Report*





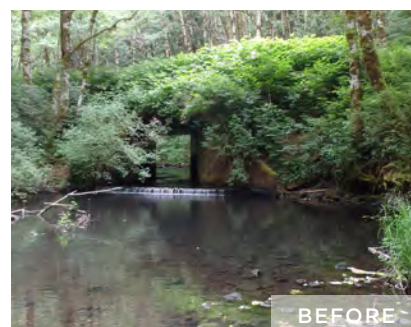
## Our biggest year yet!

Salmon SuperHwy partners had another great year, with 9 projects implemented that removed fish passage barriers and restored access to over 21 miles of habitat in the Tillamook-Nestucca subbasin for coho, Chinook, chum, cutthroat trout, steelhead, and lamprey. At the same time, Tillamook County's transportation infrastructure was upgraded with structures that are designed to accommodate increased flows, reducing flooding and risk of road failure. As with all of our Salmon SuperHwy projects, it's a team effort and the partnership makes it happen.

### JOINT CHIEFS LANDSCAPE RESTORATION PARTNERSHIP

2019 was the third and final year of funding from the Joint Chiefs Landscape Restoration Partnership award. The Salmon SuperHwy received \$2,491,799 through USFS and NRCS over three years, and leveraged an additional \$4,533,519 toward project survey, design/engineering, technical support, project construction, monitoring, and forest management. This provided a springboard for multiple projects led by USFS, NRCS, and local partners.

**BLM BACKCOUNTRY BYWAY** The Bureau of Land Management's Backcountry Byway upgrades continue on the Upper Nestucca Access Rd. BLM replaced three undersized culverts on fish streams in 2019, with several more planned for upcoming years. Below, the undersized, flat bottomed box culvert (left) at Fairdale was replaced with a open bottom arch with streambed simulation design (right).



### 2019 SUCCESS

- 9 projects completed/barriers removed
- 21+ miles of habitat reconnected
- 6 species of ocean-going fish species returned to historic habitat
- \$3.6 million + funding leveraged
- 54 jobs created
- United landowners with local, state, and federal partners to meet goals

### OVERALL SUCCESS

- From 2014-2019, 29 of 93 priority barriers have been removed
- Over 80 miles of habitat has been reconnected. We're almost halfway to our goal of 180 miles reconnected!
- \$8.6 million in funding
- 129 jobs created
- Local support of the project continues to grow

“In partnership with local watershed councils, USFWS, USFS, Trout Unlimited, and others, the program brings otherwise unavailable technical and administrative support to the County's most critical challenges.”

- Ron Newton, Tillamook County Public Works

**NRCS WORKS WITH PRIVATE LANDOWNERS** Working with agricultural and forest landowners is an important part of the Salmon SuperHwy, and NRCS plays a key role in making those connections. NRCS led three important barrier removal projects with private landowners in 2019, including the project shown below, which reconnected seven miles of habitat.



A new bridge over Bear Creek reconnects three miles of anchor salmon habitat, improves sediment and large wood transport, and provides safe, climate resilient access for industry and residents using E. Beaver Creek Rd.

THE SALMON SUPERHWY

*Connecting communities, one fish at a time.*

### KEY POINTS

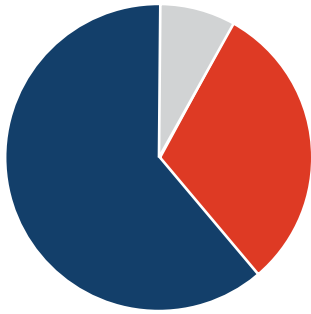
- The Salmon SuperHwy project is the single biggest combined fish conservation/economic development partnership going on the Oregon Coast
- Our goal is to reconnect 6 important rivers in the Tillamook-Nestucca area that have been blocked over time
- It will reconnect 6 species of ocean-going fish with 95% of their available habitat: Chinook, steelhead, coho, chum, sea-run cutthroat trout and lamprey
- It is unprecedented in its strategy and scope, combining the latest science with local expertise to determine the highest conservation return on investment
- Creates and supports hundreds of local jobs and invests millions of dollars into the North Coast's economy
- Stimulates outdoor recreation and fishing sectors, as well as greatly benefiting the dairy, agriculture, and forest products industries
- Reduces chronic flooding and erosion, and greatly increases storm resilience throughout Tillamook County

SALMONSUPERHWY.ORG



## PROJECT COST/FUNDING 2019

Salmon SuperHwy partners work strategically to maximize leveraging of funds. The final year of the Joint Chiefs Award continued the momentum of the program, and new funding secured from NOAA Community Based Restoration, Resources Legacy Fund, USFWS, and OWEB will help continue the progress in the next three years.



- Federal: \$2,193,983
- State: \$1,151,937
- Local/Private: \$281,600

## PARTNERS

**LOCAL:** Tillamook County, Tillamook Estuaries Partnership, Tillamook County Creamery Association, Tillamook Bay Watershed Council, Nestucca-Neskowin Watershed Council

**STATE:** OR Dept. of Fish and Wildlife, OR Dept. of Forestry, OR Dept. of Transportation, OR Watershed Enhancement Board, OR Fish Passage Task Force

**FEDERAL:** US Fish & Wildlife Service, US Forest Service, Bureau of Land Management, Natural Resources Conservation Service

**NGO:** Trout Unlimited



Inside cover photo: Salmon SuperHwy partners work as a team to maximize efficiency and put more projects on the ground.

FOR MORE INFO PLEASE VISIT US AT:  
[SALMONSUPERHWY.ORG](http://SALMONSUPERHWY.ORG)