



# Legislative Days: House Committee on Health Care

Rachael Banks,  
Public Health Director  
Multnomah County

May 22nd, 2020

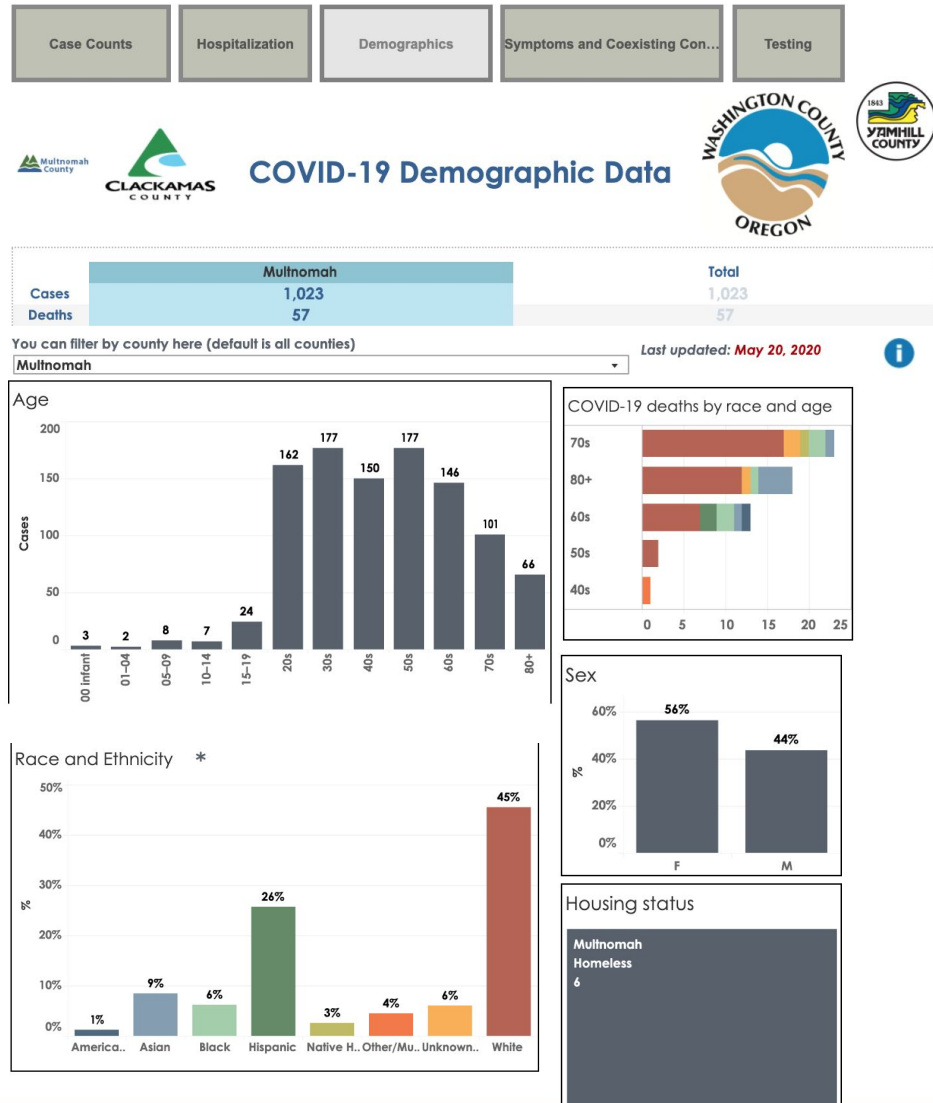
# Today's Presentation

- Multnomah County action on COVID19 and vulnerable communities
- Disparities among vulnerable communities
- Communities of color and reopening strategies
- What is needed

Let's talk  
about **RACE**






# Race and Ethnicity Data



- Demographics dashboard with confirmed cases by **race/ethnicity, sex, deaths by race/ethnicity and age, housing status**
- **hospitalizations and deaths**



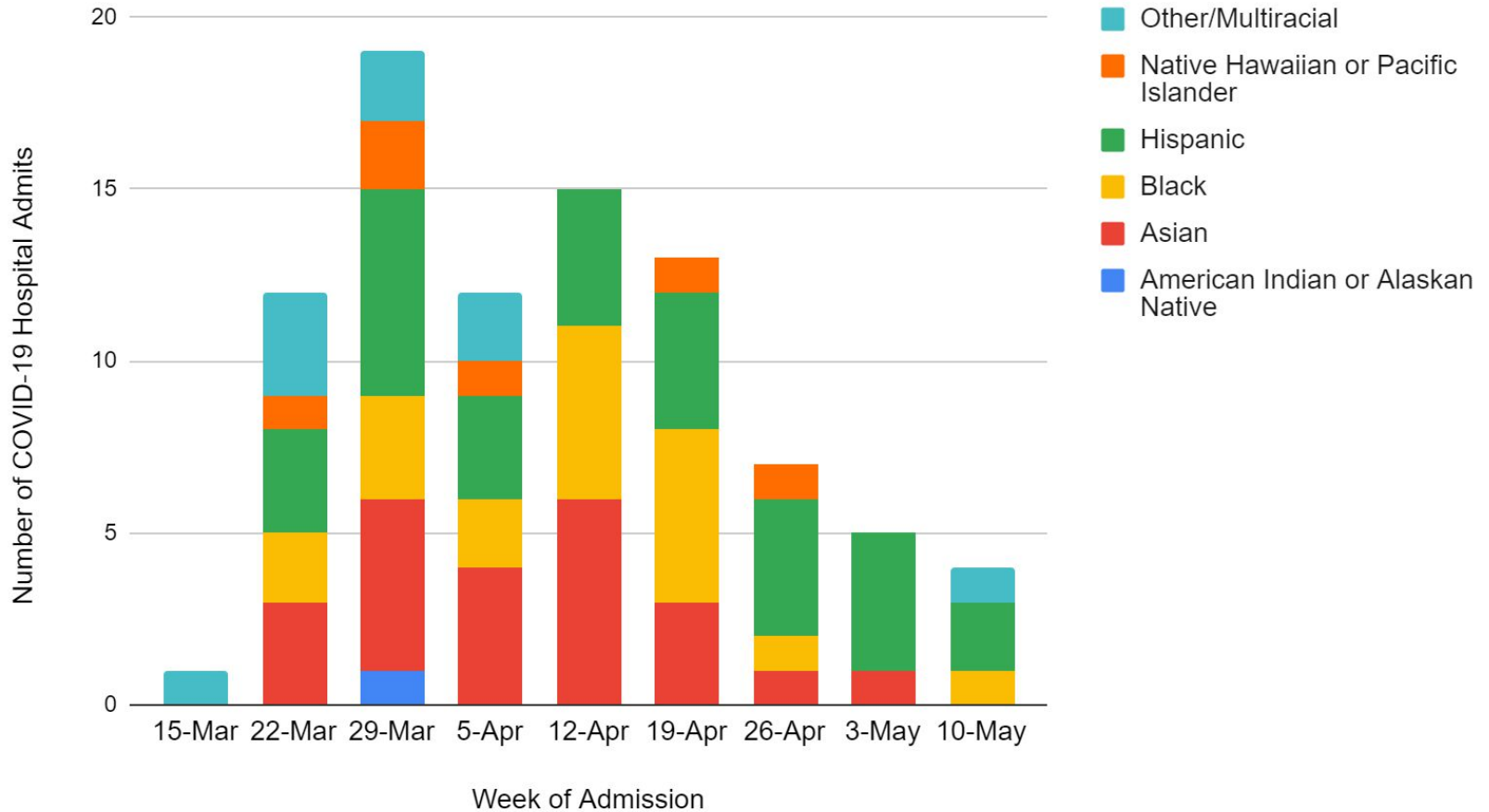
# Dashboard Update

<b>Spread of COVID-19</b> The following metrics are measured at the County level	
<p><b>Percentage of emergency department visits for COVID-19-like illnesses are less than the historic average for flu at the same time of year:</b></p> <ul style="list-style-type: none"><li>• The County meets this threshold.</li></ul>	 <b>Met</b>
<p><b>A 14-day decline in COVID-19 hospital admissions</b></p> <ul style="list-style-type: none"><li>• The County meets this threshold.</li></ul>	 <b>Met</b>
<p><b>Reduced impact on communities of color</b></p> <p>A 14-day decline in hospital admissions among people of color. The County meets this threshold.</p> <p>Multnomah County will continue to analyze disease burden among communities of color, develop and share strategies to achieve health equity in partnership with communities of color.</p>	 <b>Met</b>



# BIPOC Hospitalizations

## BIPOC Hospitalizations by Week of Admission



# Dashboard Update

## Contact Tracing

The following metrics are measured at the County level

### 15 contact tracers per 100,000 people

- The County currently employs 45 staff who conduct contact tracing.

36%



In Progress

### Contact tracing workforce is reflective of the county and able to work in needed languages

- More work is needed to meet this threshold.



In Progress

### Prepared to trace 95 percent of all new cases within 24 hours



80%



In Progress



# Dashboard Update

<b>Testing Capacity</b> The following metrics are measured regionally	
<b>Able to administer testing at a rate of 30 per 10,000 per week.</b> <ul style="list-style-type: none"><li>• The region meets this threshold.</li></ul>	 <b>Met</b>
<b>Sufficient testing sites accessible to underserved communities</b> <ul style="list-style-type: none"><li>• More work is needed to meet this threshold.</li></ul>	 <b>In Progress</b>



# Needs: COVID-19 and Equity

- Required use of REAL-D for lab testing
- Co-creation of culturally specific strategies
- Funding for expanded and prioritized contact tracing
- Adequate protections for most at risk workers
- Equity based re-opening strategy
- Support for FQHC's





