

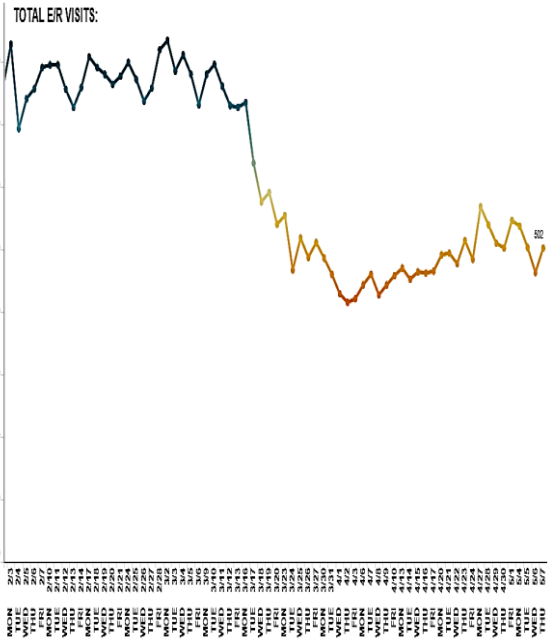
Oregon House Health Care Committee

Oregon hospitals and models of care

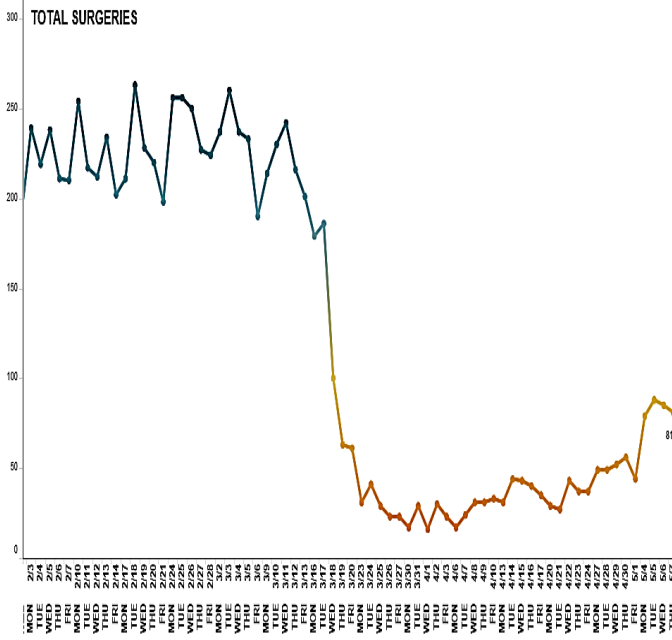
May 22, 2020

Melissa Damm, Chief Financial Officer
Providence Health & Services

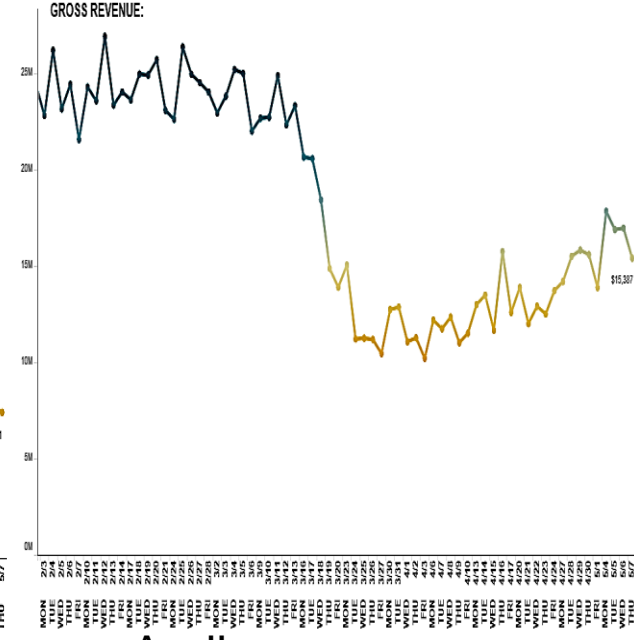
2020 ED visits, surgeries, gross revenue



April ED visits
down 40%



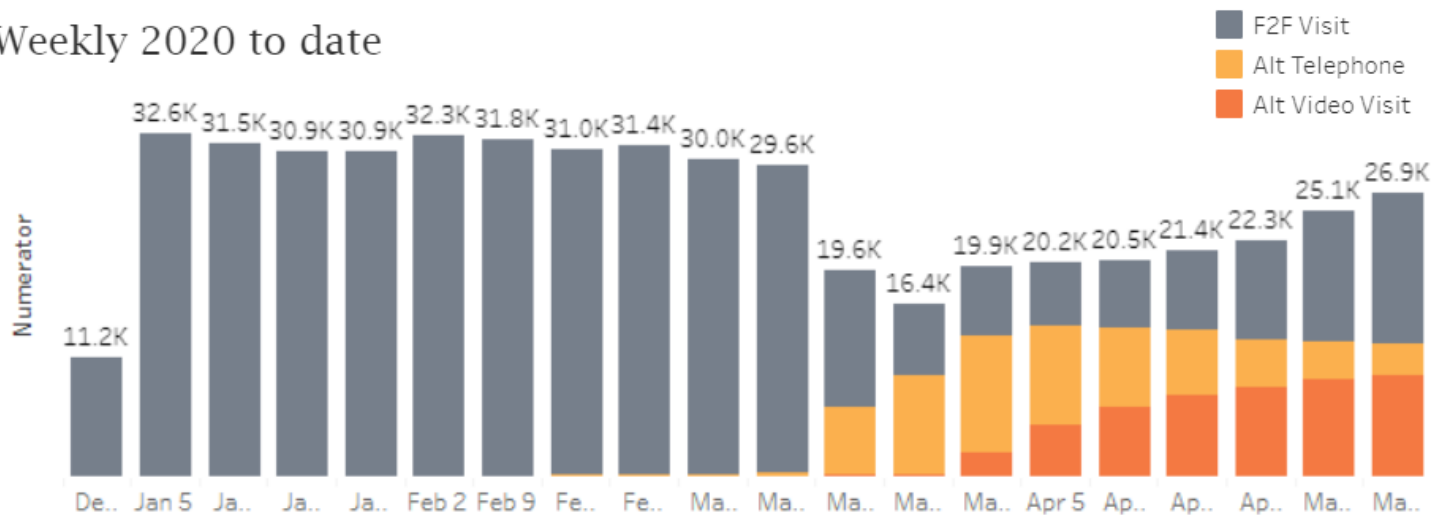
April surgeries and procedures
down 66%



April gross revenue
down 40%

Transition to Virtual Care

Weekly 2020 to date



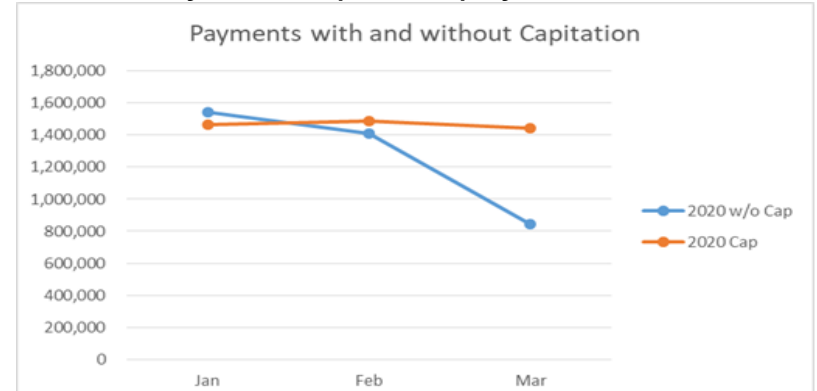
January through May 16th 2020

- Face-to-face visits **down 70%** from baseline in April
- Provided over 84,000 virtual visits in March and April in Oregon

Looking forward

- Payor mix changes
- Capitated payment models
- Governmental payors at cost
- Health care provider cost growth
- Long length of stay

Q1 2020 Performance Review Example *Primary care capitated payments vs. FFS*



Payments	2020 w/o Cap	2020 Cap
Jan	\$1,543,970	\$1,468,389
Feb	\$1,409,327	\$1,487,652
Mar	\$846,221	\$1,443,138
Grand Total	\$3,799,518	\$4,399,180