

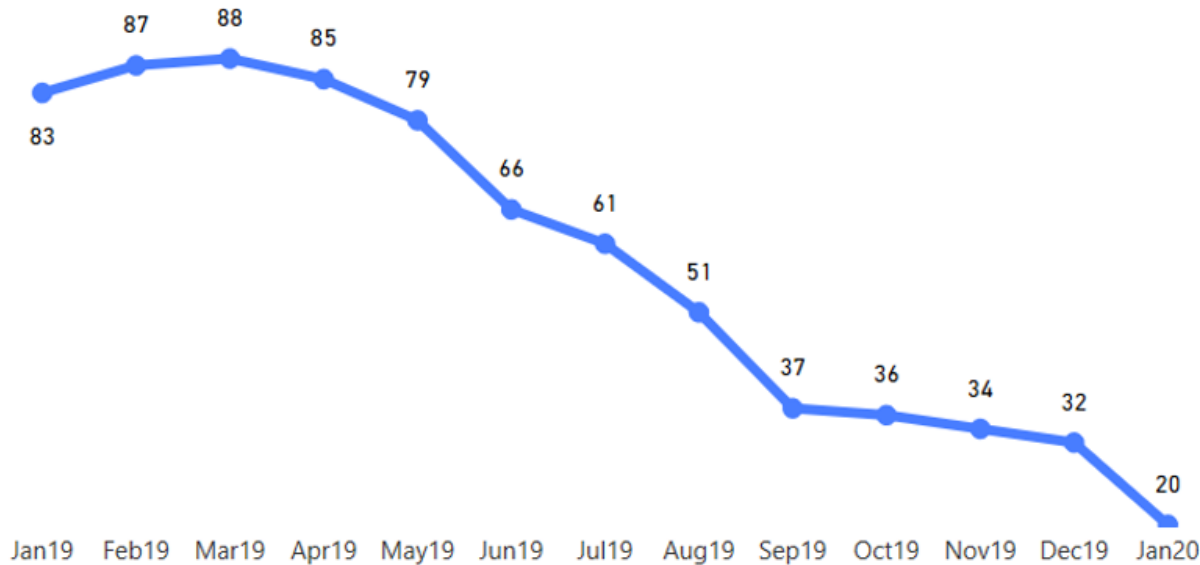
Oregon Child Welfare Program Update

House Interim Committee On
Human Services and Housing
– January 14, 2020

DHS 2020 Budget Requests

Funding need	General Fund
Strengthening, Preserving, Reunifying Families (SPRF)	\$14.3M
State employee collective bargaining	\$4.5M
Behavioral residential services (BRS) rate increase	\$5M
Rebalance	\$13.6M
Third-party investigations	\$7.8M
Non-state employee bargaining	\$22.5M
Stable budget foundation (Clearing double-fills)	\$39.9M
Positions related to Gov. Brown Executive Order on Child Welfare	\$16.1M
New positions critical to safety and health	\$3.1M
Total	\$128M

Out-of-State Placements of Children in Foster Care

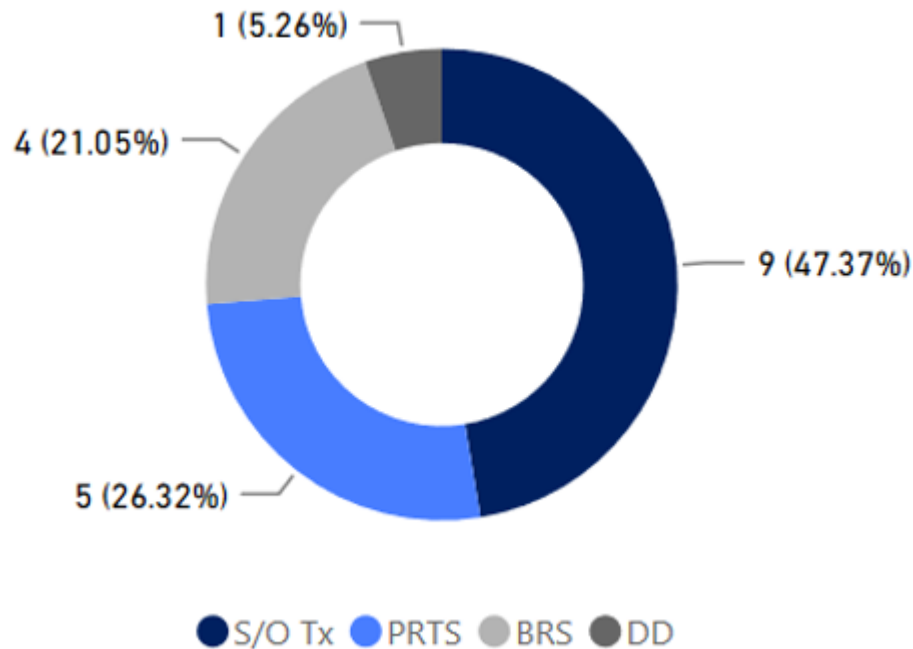


State	Oregon children
Idaho	8
Iowa	3
Michigan	5
Utah	3

19 Oregon foster children are in six facilities in four states

- Number of children placed out-of-state has decreased by 69, a decline of about 78% since peak in March 2019.
- Two children have entered out-of-state programs since November 2019
- All children are visited in-person twice monthly by DHS or third-party workers

Reasons for out-of-state placements



Primary treatment needs

Barrier	Number of children
Appropriate level of care is unavailable	4
Appropriate level of care does not exist	15

Oregon Child Abuse Hotline



Screener

- Highly Trained
- Trauma Informed
- Apply Statute, Rule and Procedure



Screening Supervisor

- Clinical Supervision and Coaching
- Case-by-case consultation
- Quality Assurance



Children & Families

- Understanding family functioning
- Family centered questions
- Refer to Services or agency intervention

Contacts, reports and assigned assessments - 2019

	Contacts	Screening Reports	Assigned
April	18,567	8,445	4,473
May	17,232	9,120	4,872
June	14,540	6,683	3,595
July	13,745	6,554	3,726
Aug.	13,788	6,590	3,636
Sept.	17,555	7,386	4,107
Oct.	20,929	8,179	4,575
Nov.	18,229	7,305	3,933
Dec.	16,850	6,719	3,600

- 44% of total contacts are abuse screening reports
 - Remaining are requests for information
- 55% of screening reports are assigned for a CPS assessment
- 24% of all contacts ORCAH receives result in a CPS assessment

Update on 2019 Hiring Surge

Hiring Surge was active July through November 2019

- 345 vacancies filled
- 173 were caseworkers hired
- 129 of 173 caseworkers were new to Child Welfare
 - The remaining hires were transferring or returning employees
- With few exceptions all employees hired during the Surge have started

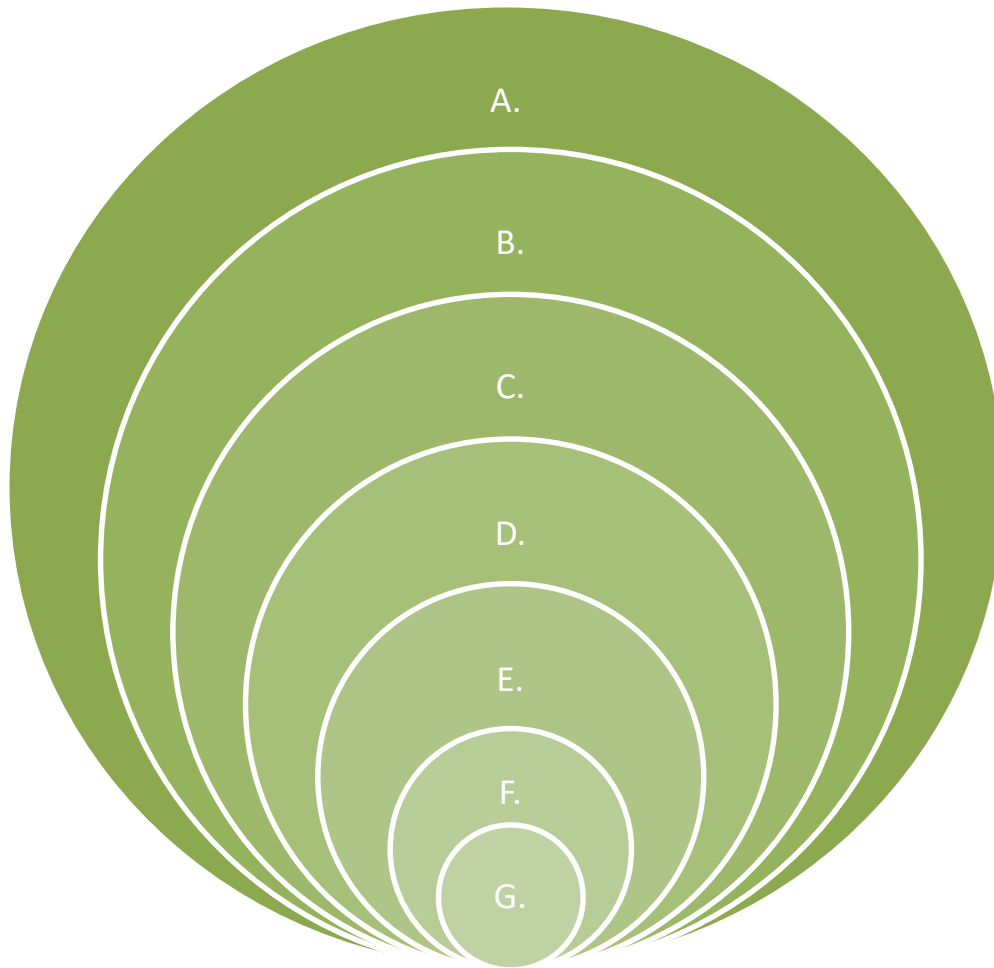
Transforming the Oregon Child Welfare System

- Transformation is bigger than the Family First Prevention Services Act (FFPSA)
 - Bigger than the Child Welfare Program
- Create capacity in all systems to support the needs of families and children
 - Beds are not services
 - Services need to meet child's needs

Vision – Strategy – Intention - Outcomes

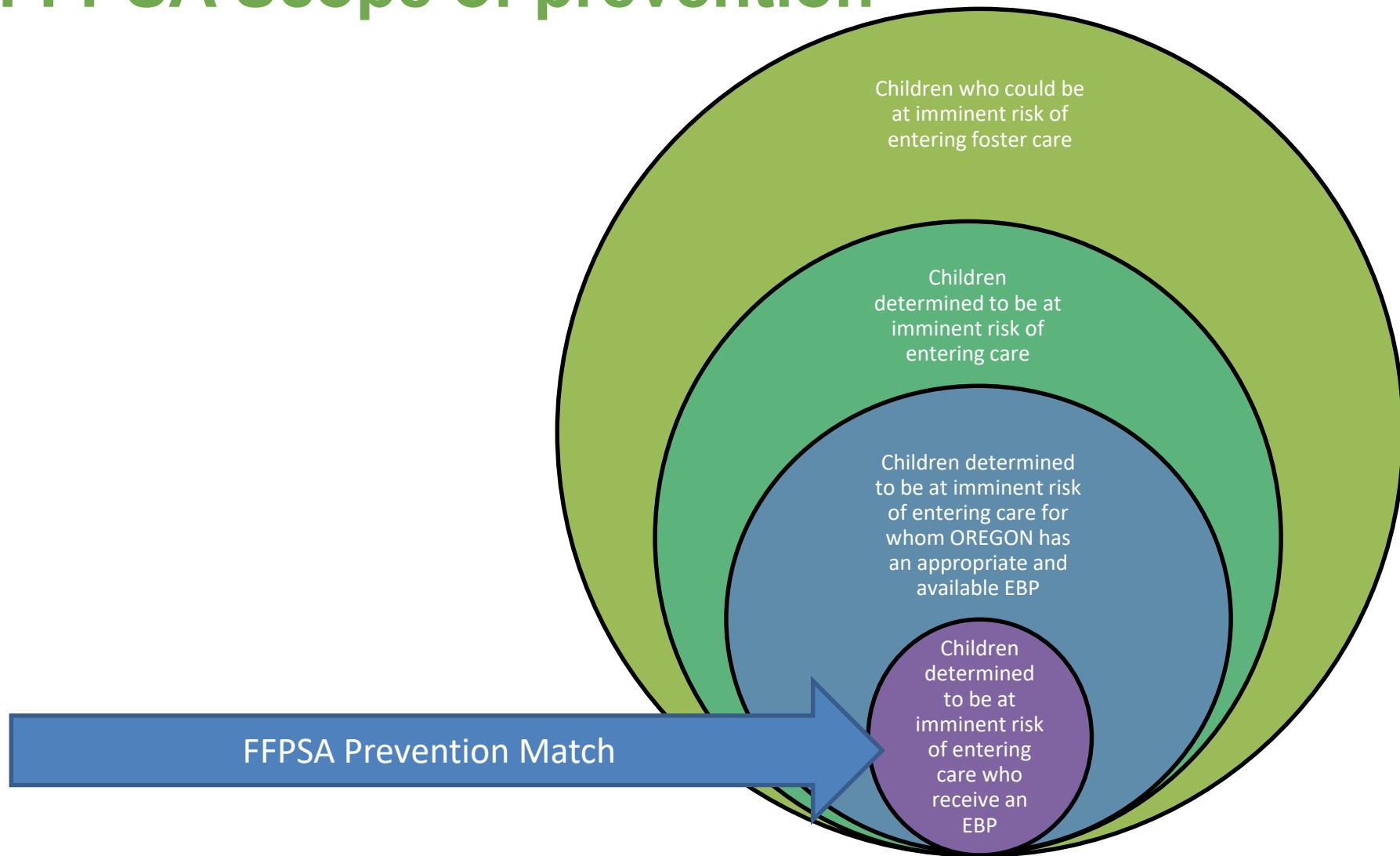
- Decrease entries, increase exits, decrease reentries
- Increase safety and stability
- Increase timeliness to permanency
- Serve families outside of foster care
- Foster parents act as partners with agency and with families of origin

Child Welfare System



- A. Communities
- B. Families and children in need of supports but NO maltreatment
- C. Families and children with high risk factors (SSP, Employment, Housing)
- D. Families and children with a Hotline Call that was screened out
- E. Families and children with a hotline called screened in and Not Founded
- F. Families and children with a hotline called screened in and Unfounded
- G. Families and children with a hotline called screened in and Founded

FFPSA Scope of prevention



Major Provisions: Prevention

- Levels of evidence for the prevention programs:
- Dependent on amount of well-supported spending

