



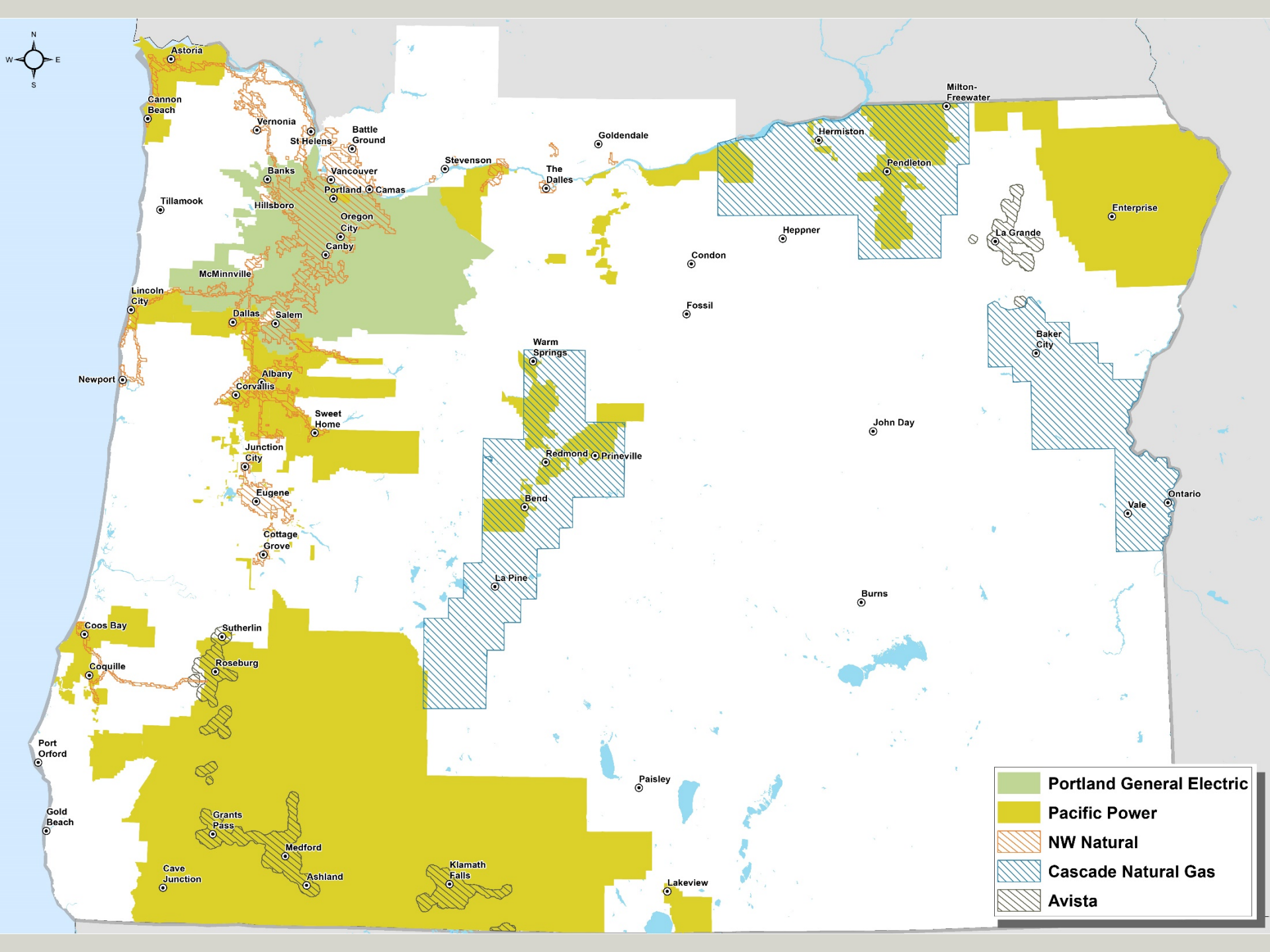
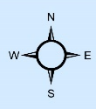
# Energy Efficiency Opportunities in the Industrial Sector

10/25/2019



## Who we serve

- Industrial + manufacturing facilities
- Agriculture, nurseries, dairies, irrigators
- Water + wastewater treatment facilities
- Limitations on services for large customers



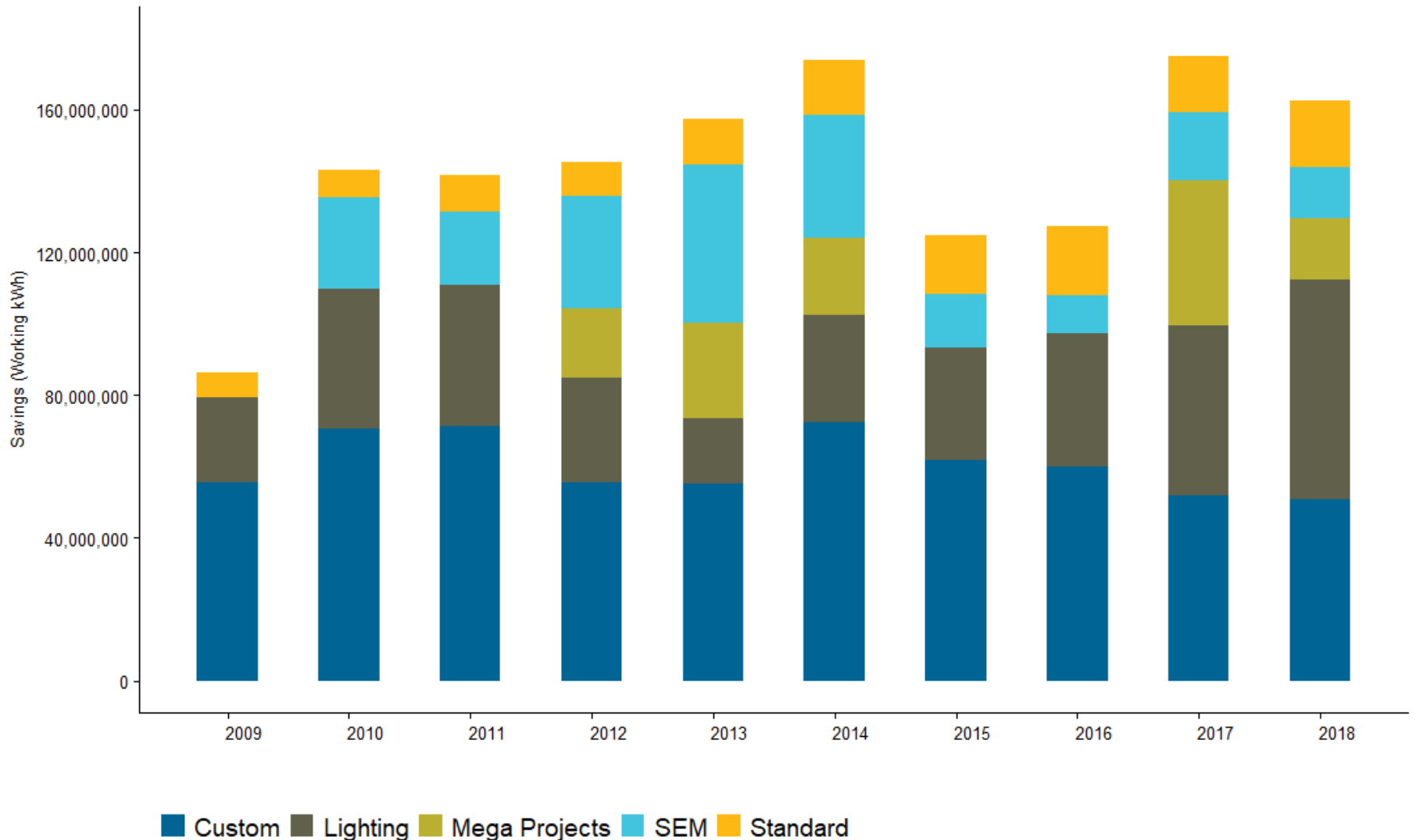
	<b>Portland General Electric</b>
	<b>Pacific Power</b>
	<b>NW Natural</b>
	<b>Cascade Natural Gas</b>
	<b>Avista</b>



## Energy Trust Production Efficiency Program

- Standard
- Lighting
- Custom Track
- Strategic Energy Management
- Megaprojects

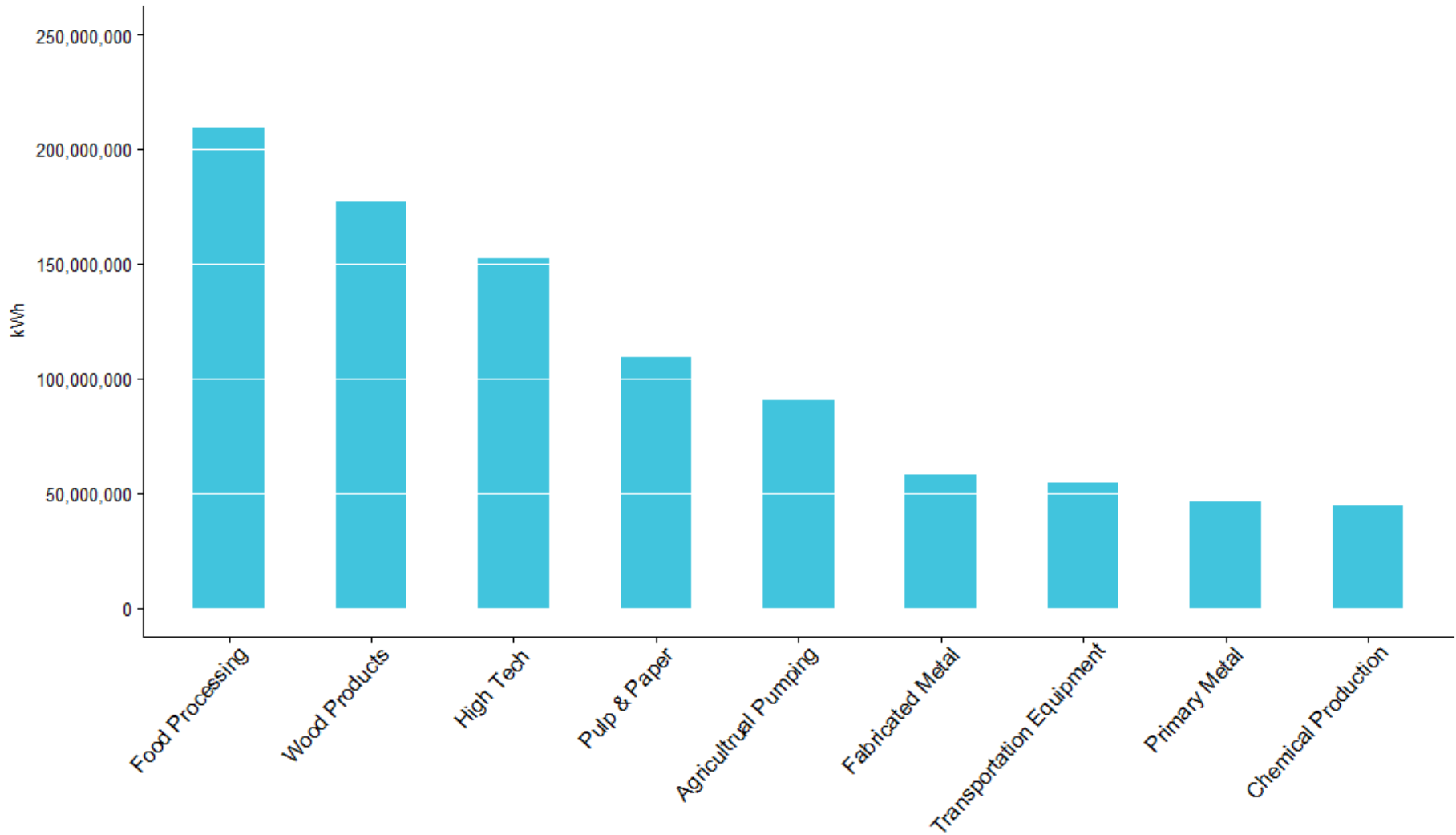
# Electric Savings by Program Track



Working savings

Chart shows 2009-2018 actuals.

# Electric Savings by Market Segment

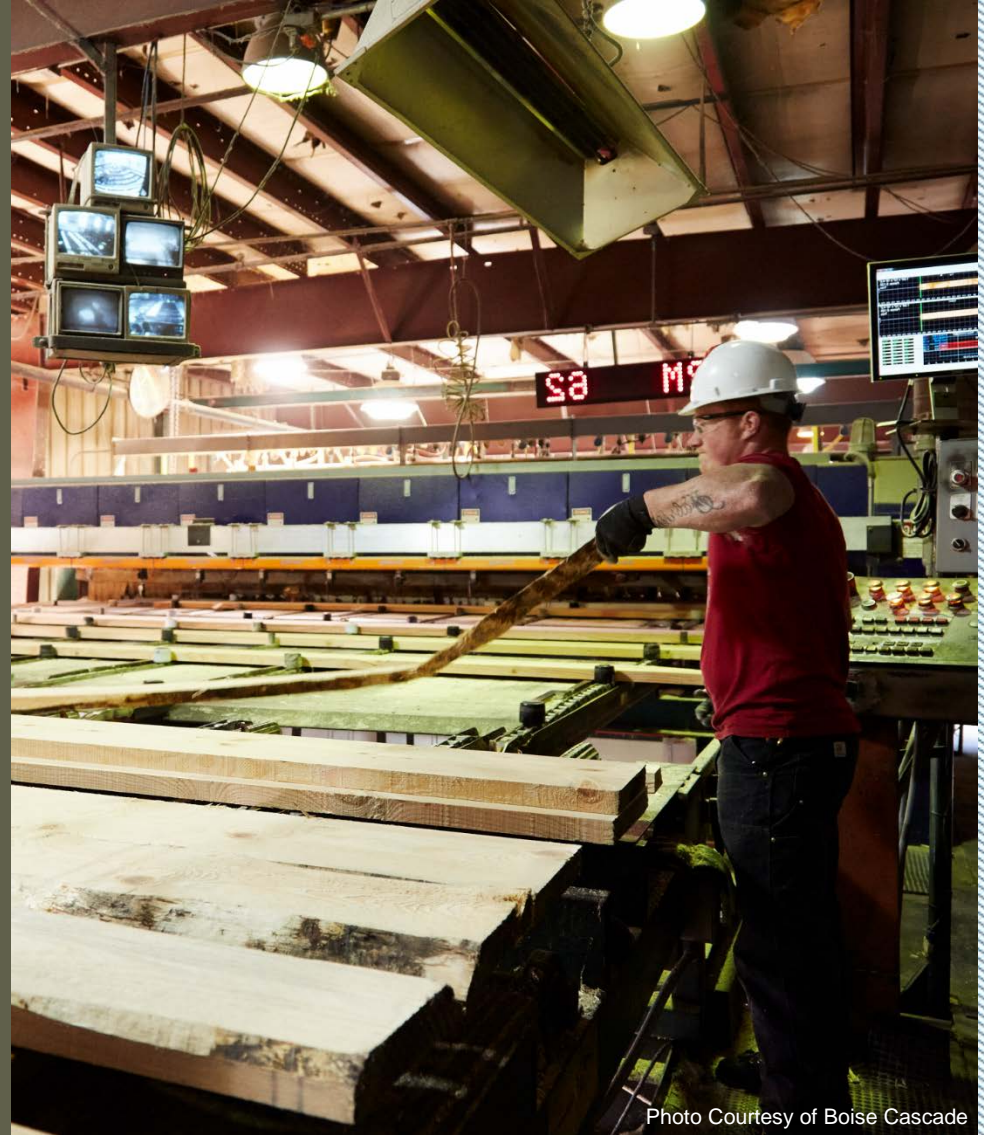


*Working savings*

*Chart shows 2009-2018 actuals.*

# Boise Cascade Wood Products

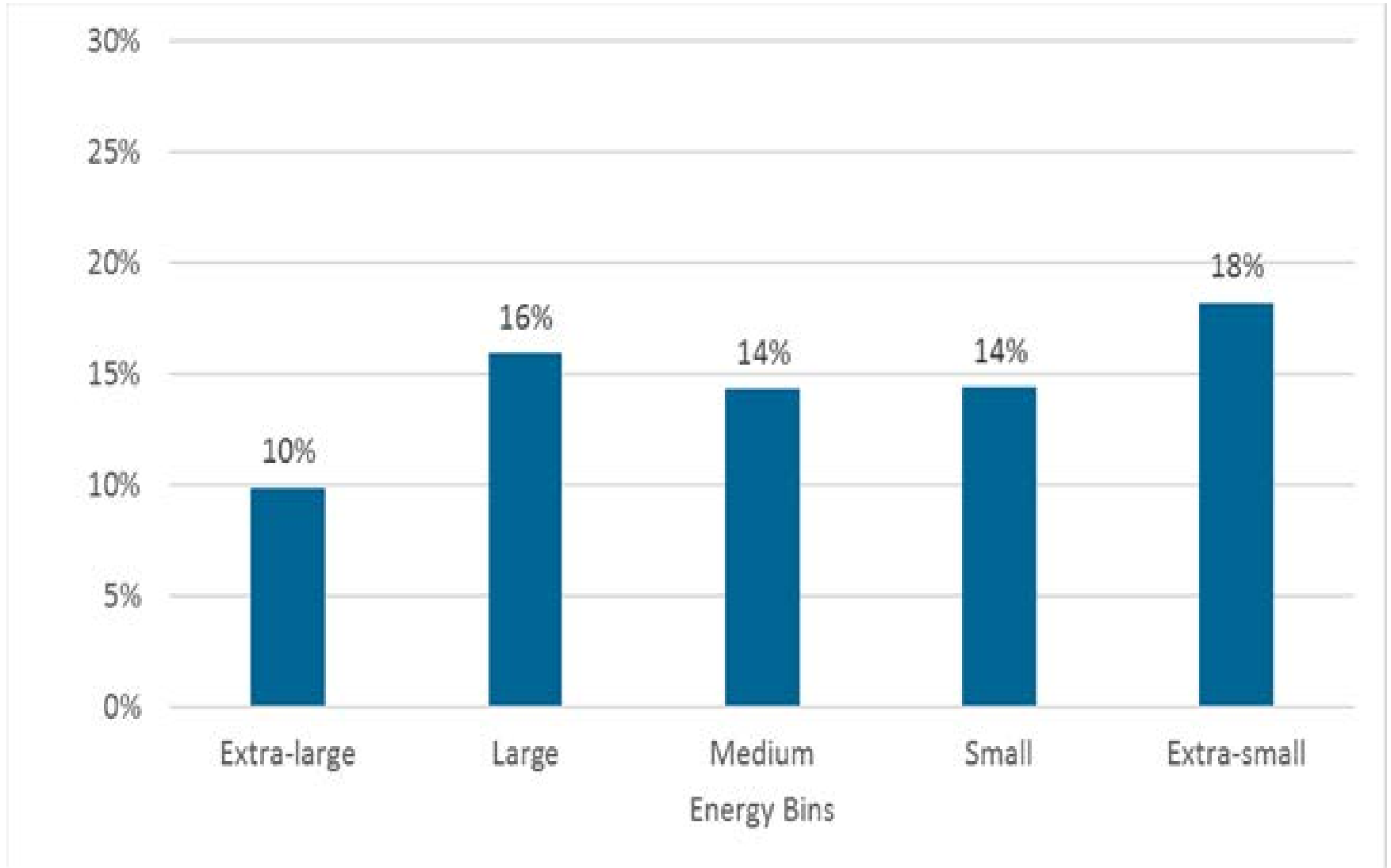
- \$332,000 in cash incentives from Energy Trust
- Over \$350,000 annual energy cost savings
- 6.4 million annual kWh saved
- 7 million pounds of avoided CO<sub>2</sub> emissions



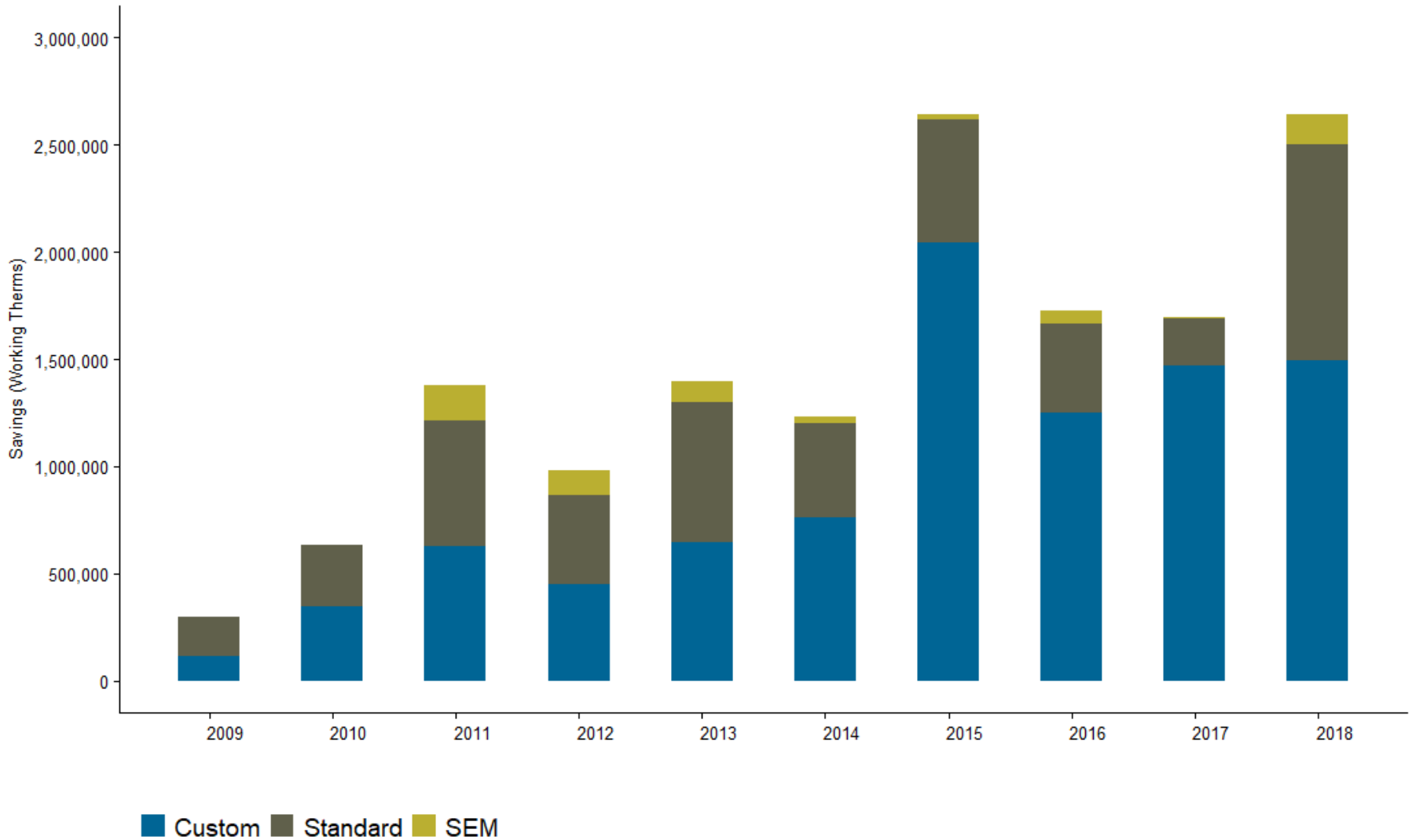
“We’re in a very competitive industry...Energy Trust incentives make this project a good investment and are symbolic of the efforts that our guys have put into making us more competitive.”

Mike Zojonc, mill manager

# Average % of Total Site Electric Energy Saved



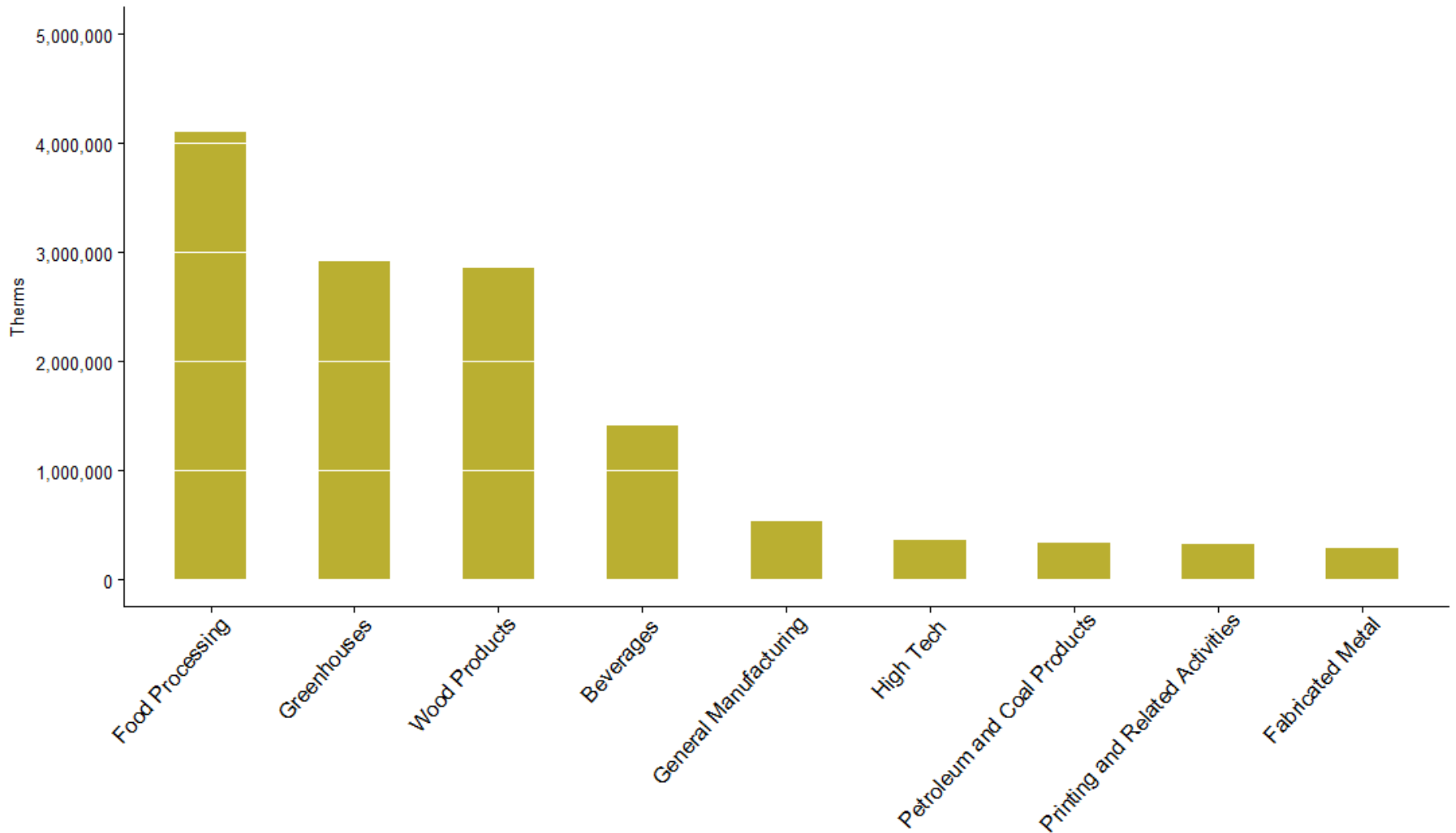
# Gas Savings by Program Track



*Working savings*

*Chart shows 2009-2018 actuals.*

# Gas Savings by Market Segment



*Working savings*

*Chart shows 2009-2018 actuals.*

# Yoshida Foods

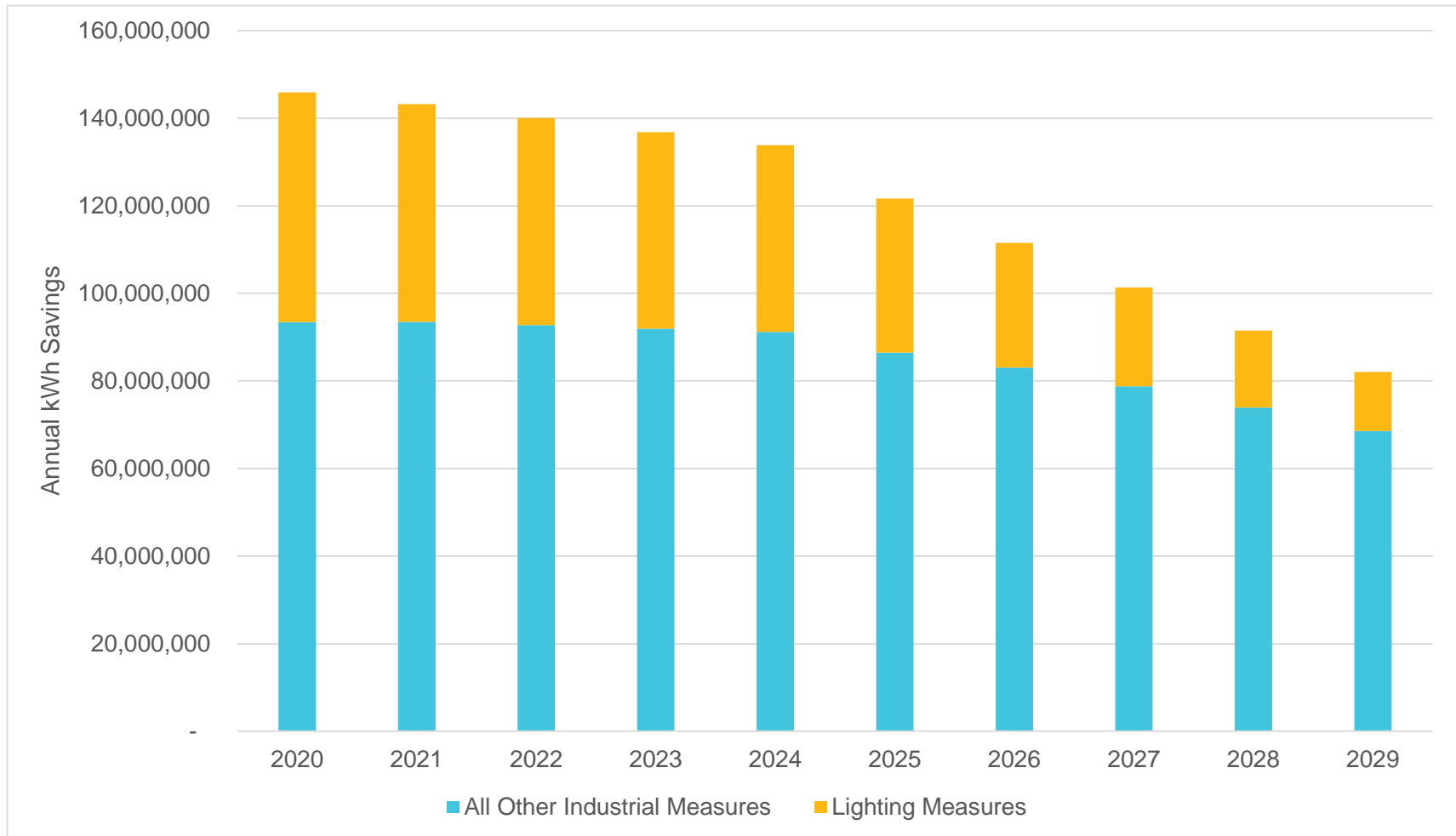
- Upgraded pasteurizer, compressed air, solar energy
- \$218,000 in Energy Trust incentives
- 187,000 therms and 232,000 kWh saved annually
- 2.4 million pounds avoided CO<sub>2</sub>



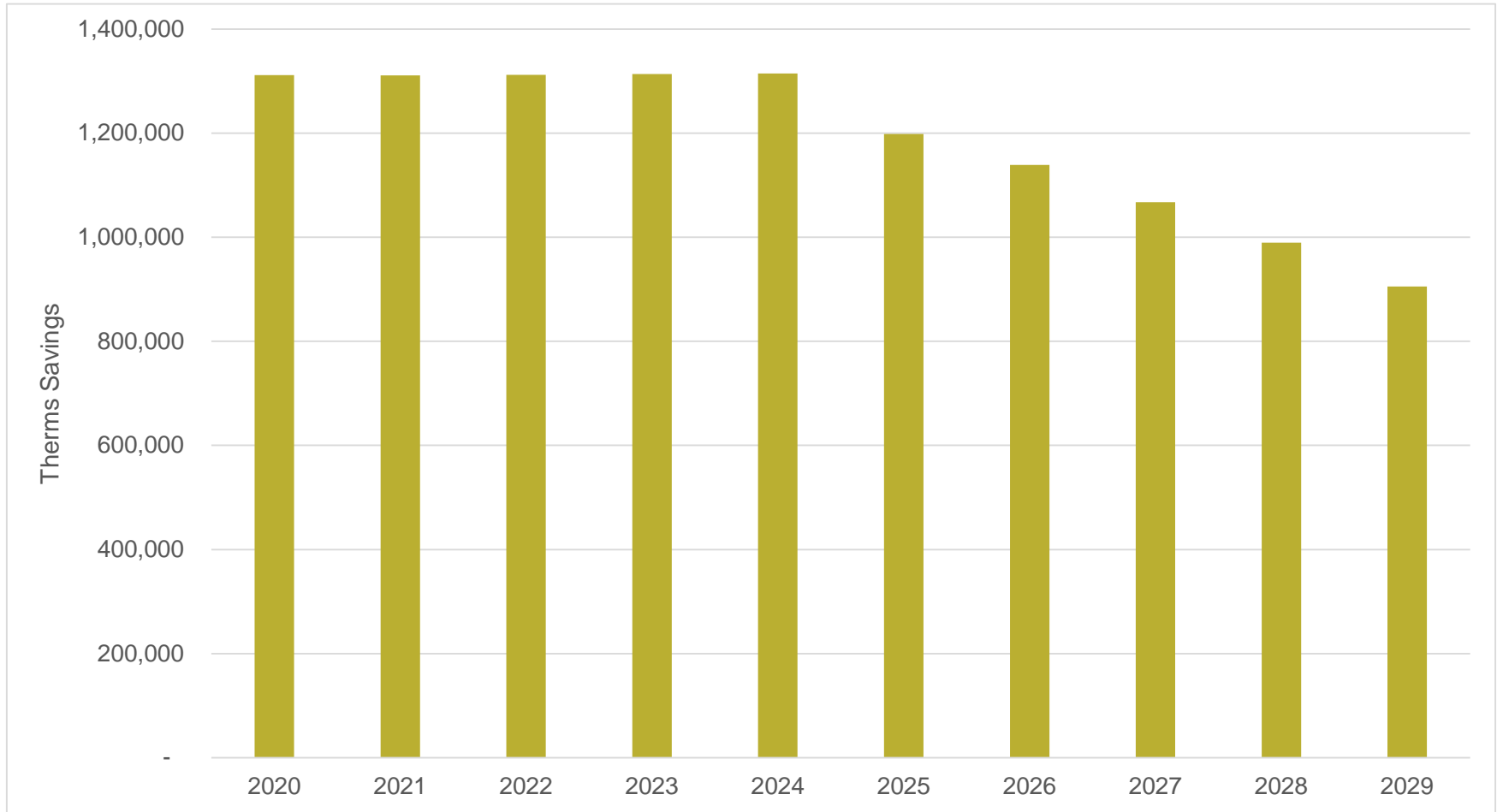
“Energy Trust keeps us aware of available offerings. We appreciate their streamlined approach in helping us get projects online fast.”

Frank Heushkal, President

# 10 Year Annual Electric Savings Projections (kWh)



# 10 Year Annual Natural Gas Savings Projections (Therms)





# Trends

- Strong savings still exist with our large customers
- Strong program participation with wood products, food processors and high tech customers continues
- Savings potential from compressed air, motors HVAC and primary process remains strong
- Savings from new opportunities come on line as measures phase out

# Policy Constraints

- Very large customers (over 1 aMW)
- Gas transport customers
- Utility system benefits only, limited carbon reduction benefits





Thank you

Amanda Potter

Industry and Agriculture Lead

[amanda.potter@energytrust.org](mailto:amanda.potter@energytrust.org)

503-445-7646