



OREGON
DEPARTMENT OF
EDUCATION

Oregon achieves . . . together!

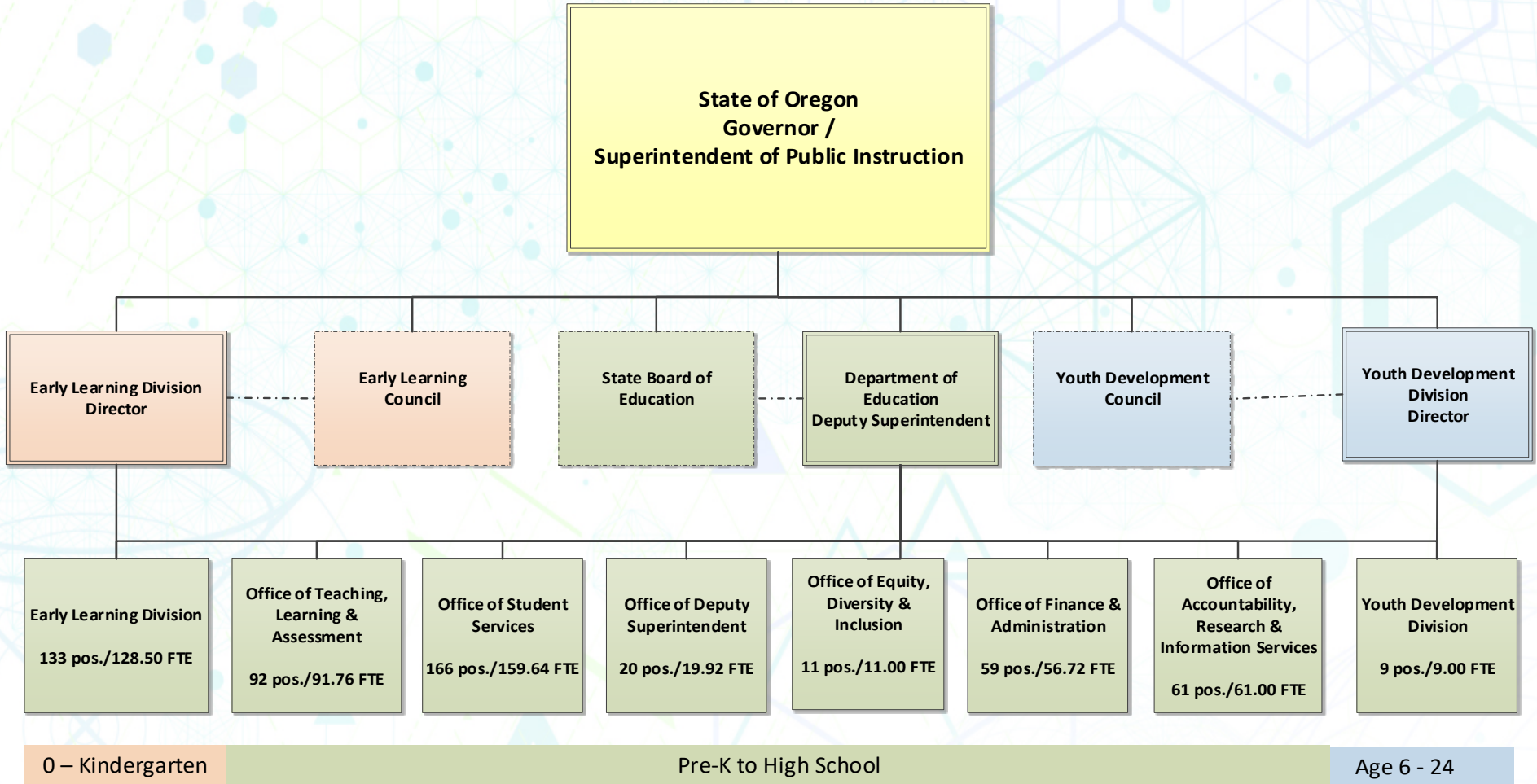
Joint Committee on Student Success

Overview of Oregon's Education System

COLT GILL

**Acting Deputy Superintendent of Public
Instruction**

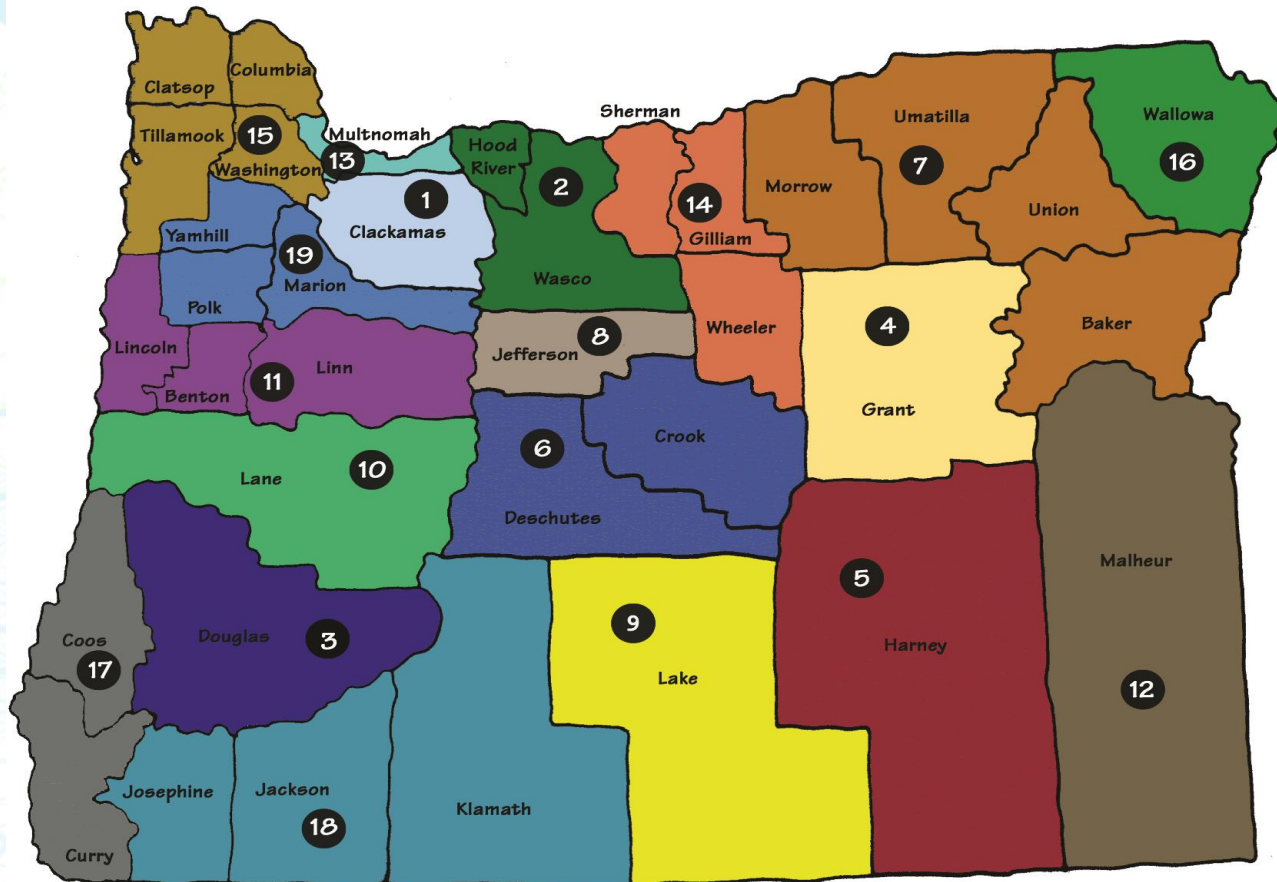
OREGON DEPARTMENT OF EDUCATION
2017-19 Legislatively Adopted Budget



551 Positions
537.54 FTE



Oregon's Education Service Districts

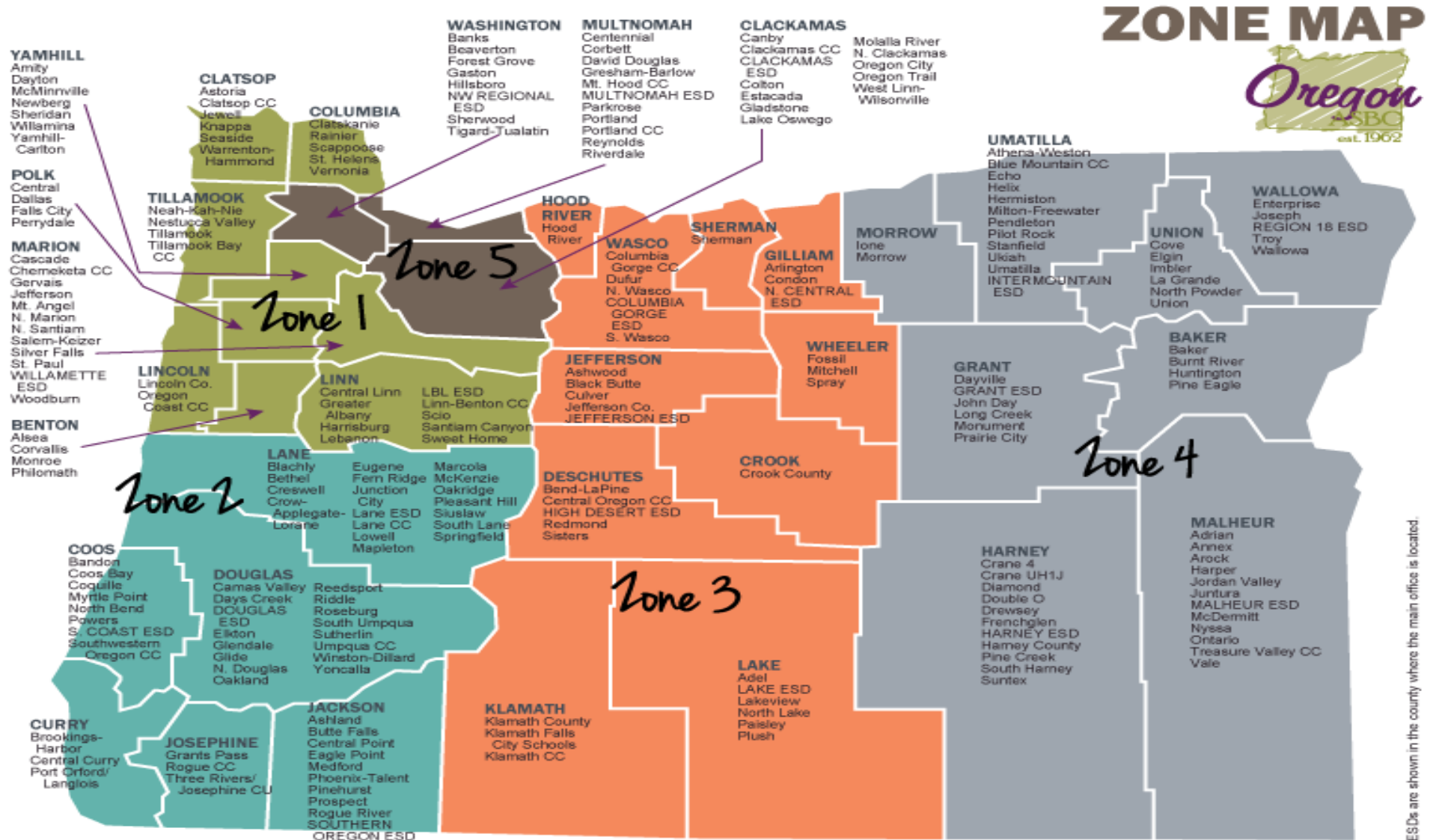


OAESD Membership	
1.	Clackamas ESD 69,865 ADMw
2.	Columbia Gorge ESD 9,849 ADMw
3.	Douglas ESD 16,895 ADMw
5.	Harney ESD 1,860 ADMw
6.	High Desert ESD 34,331 ADMw
7.	InterMountain ESD 29,910 ADMw
8.	Jefferson ESD 4,948 ADMw
9.	Lake ESD 1,831 ADMw
10.	Lane ESD 55,111 ADMw
11.	Linn Benton Lincoln ESD 44,951 ADMw
12.	Malheur ESD 7,464 ADMw
13.	Multnomah ESD 115,763 ADMw
15.	NW Regional ESD 124,816 ADMw
17.	South Coast ESD 16,058 ADMw
18.	Southern Oregon ESD 61,017 ADMw
19.	Willamette ESD 106,166 ADMw
Non-Members	
4.	Grant County ESD 1,551 ADMw
14.	North Central ESD 2,149 ADMw
16.	Region 18-Wallowa ESD 1,375 ADMw

* Map by the Oregon Association of Education Service Districts (OAESD)



Roles & Responsibilities: School Districts



* Map by the Oregon Association of School Business Officials (OASBO)



OREGON
DEPARTMENT OF
EDUCATION

Oregon achieves . . . together!

Questions