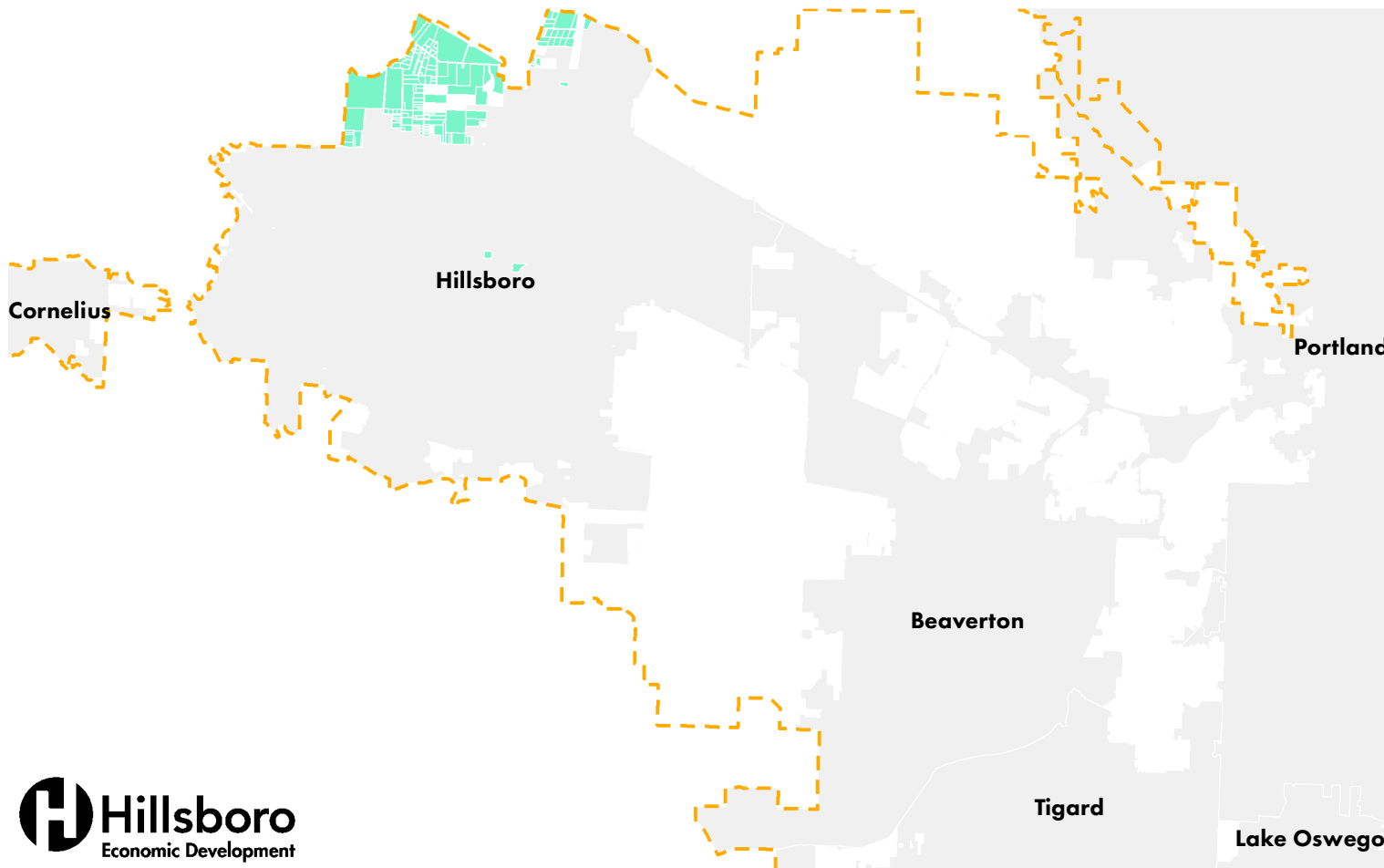
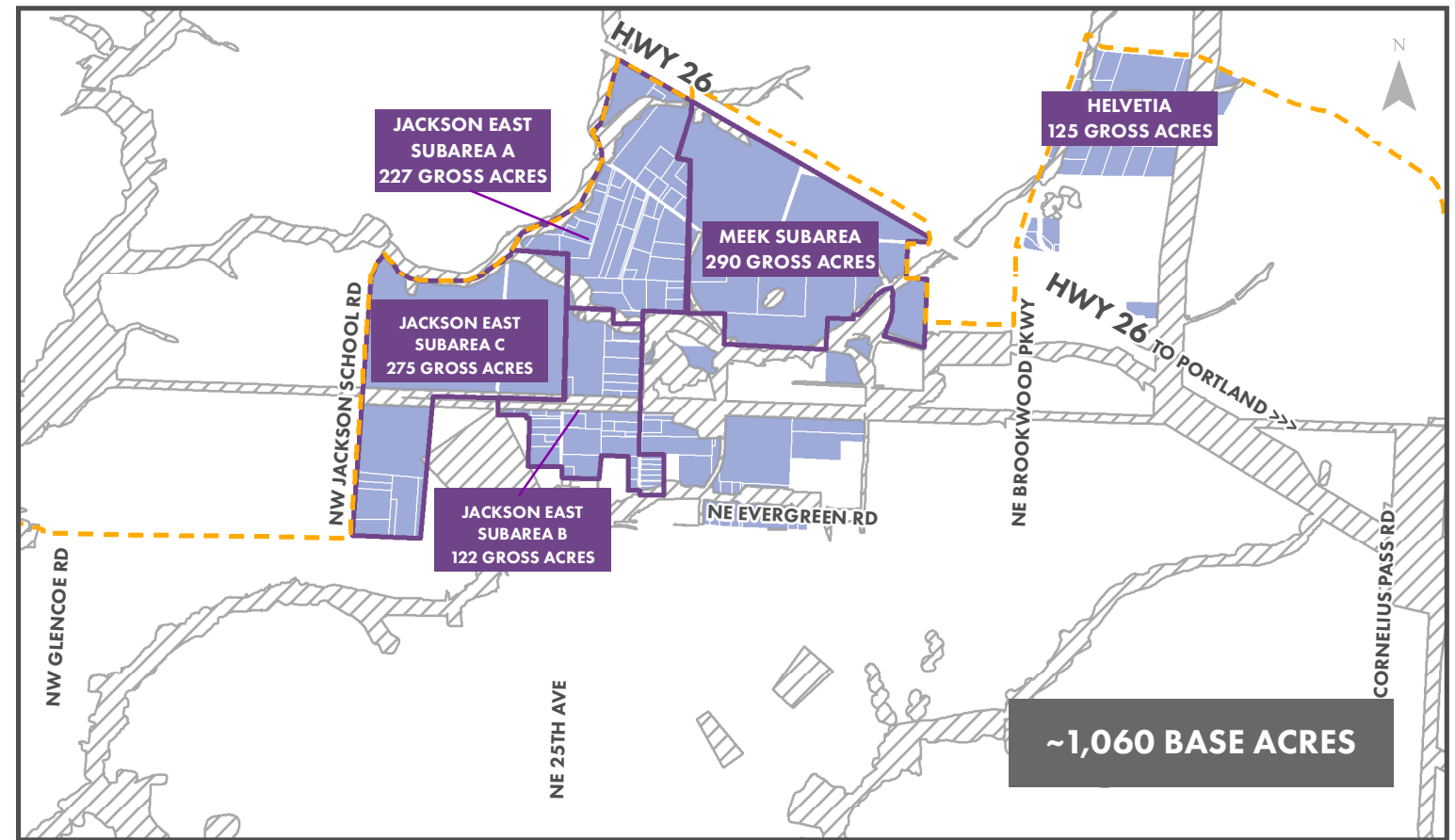
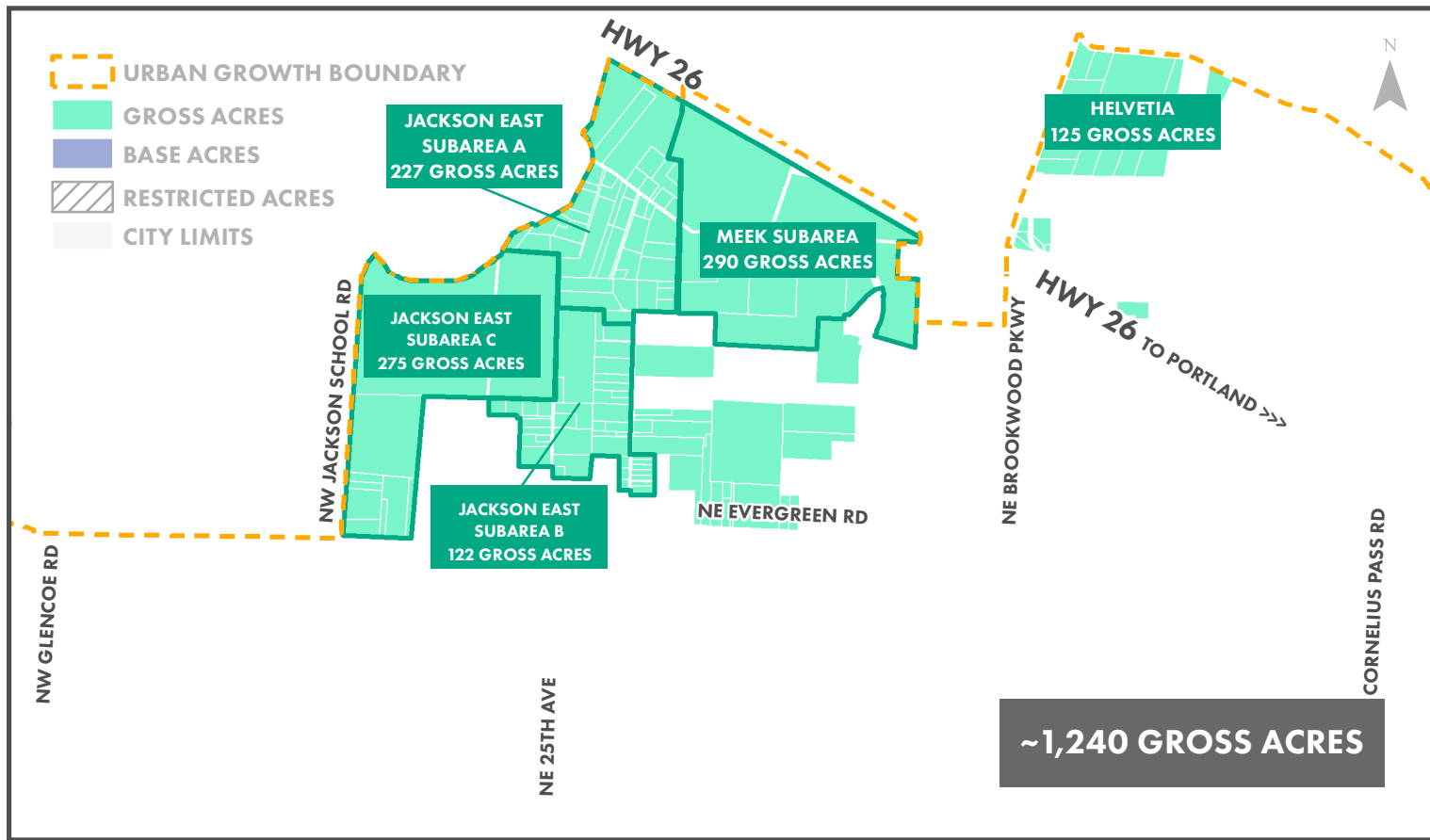
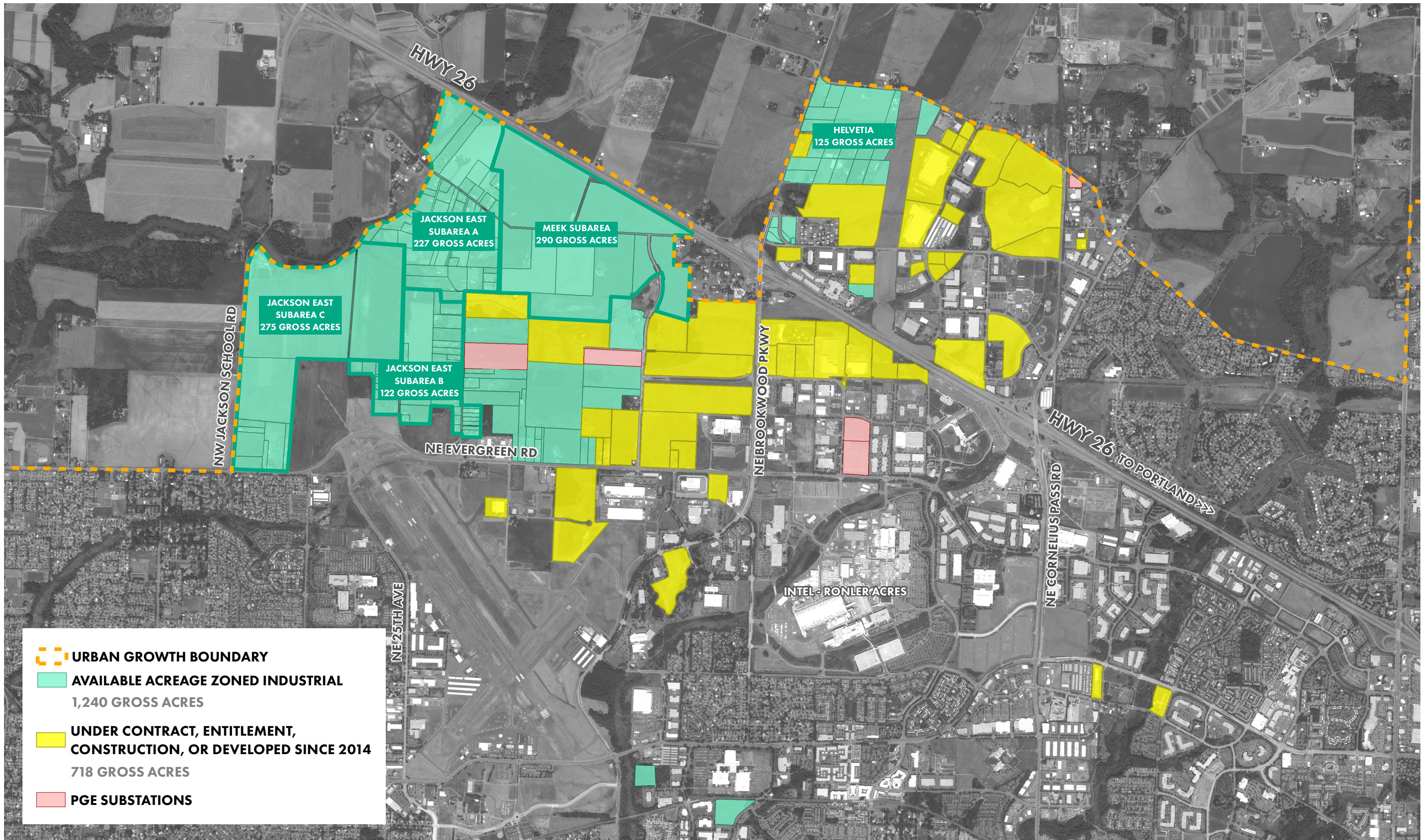


# REMAINING HILLSBORO ACREAGE ZONED FOR INDUSTRIAL USE



$$\text{GROSS ACRES} - \left( \begin{array}{l} \text{FEMA 100 Year Floodplain} \\ \text{Wetlands \& Wetland Buffers} \\ \text{Significant Natural Resource Overlay} \\ \text{Major Road ROWs} \\ \text{BPA ROWs} \\ \text{Airport Zone 1} \end{array} \right) = \text{BASE ACRES}$$

	GROSS ACRES	BASE ACRES
<b>TOTAL</b>	<b>1,240</b>	<b>1,060</b>
<b>MEEK SUBAREA</b>	<b>290</b>	<b>275</b>
<b>JACKSON EAST</b>	<b>624</b>	<b>540</b>
SUBAREA A	227	190
SUBAREA B	122	100
SUBAREA C	275	250
<b>HELVETIA</b>	<b>125</b>	<b>110</b>



- URBAN GROWTH BOUNDARY
- AVAILABLE ACREAGE ZONED INDUSTRIAL  
1,240 GROSS ACRES
- UNDER CONTRACT, ENTITLEMENT,  
CONSTRUCTION, OR DEVELOPED SINCE 2014  
718 GROSS ACRES
- PGE SUBSTATIONS