

From the Desk of Amit Kolla



Tuesday, July 4, 2017

RE: Organizational support for SB 847

The Oregon League of Conservation Voters, Wild Salmon Center, Oregon Council Trout Unlimited, Cascadia Wildlands, and the Sierra Club Oregon Chapter urge your support of SB 847.

This bill creates a process for transferring lands currently managed for Common School Fund benefits to other public agencies who are better equipped to manage these lands for benefit of Oregonians. Oregon's Common School Lands have a strong mandate to produce revenue for the Common School Fund. In many cases the lands have legally protected environmental assets or are used extensively by the public for hunting and fishing.

The tension between environmental or social concerns and revenue pressure creates a conflict, and SB 857 creates a process to address that conflict deliberately and incrementally. SB 847 is modeled on a successful Trust Land Transfer process in Washington State that was created to address the same problem.

SB 847 does not mandate any spending or action, it simply creates a tool that the Land Board could use to identify and propose for lands to be transferred out of the Common School Fund to other government agencies. The Legislature will retain final authority to complete a final deal via legislation. Funds to compensate the Common School Fund might come from state revenues or local revenues.

We as a state have over 600,000 acres of Common School Fund lands in Oregon that need to be managed - rangeland, forest land, and more - and we hope that a Trust Land Transfer program can be implemented in Oregon with twin outcomes: Providing stable funding for our schools through productive timber harvesting on some state lands, and managing other lands which may include Oregon's most special places for conservation.

We urge your aye vote.



Sincerely,

Oregon League of Conservation Voters
Wild Salmon Center
Oregon Council Trout Unlimited
Cascadia Wildlands
Sierra Club, Oregon Chapter

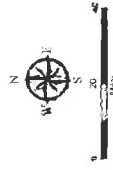
From the Desk of

Arnie Roblan

Oregon Department of State Lands

-  Elliott State Forest
82,500 Acres
-  Other Trust Lands
658,500 Acres

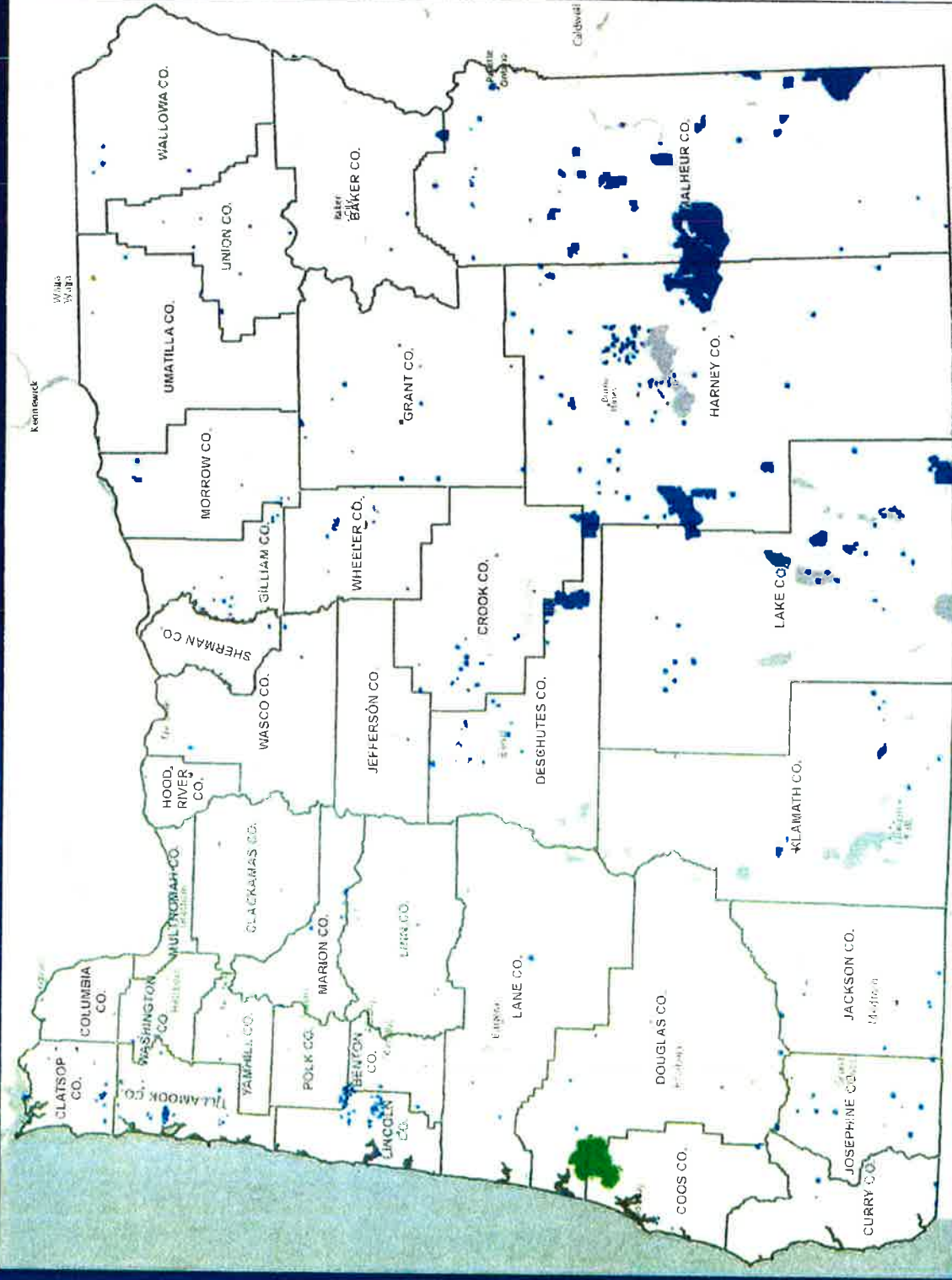
This product is for informational purposes and is not intended for legal engineering or surveying purposes. Users of this information should review or consult the primary data and information sources to ascertain the usability of the information.
Production Date: 3/13/2017



Map Projection
Oregon Lambert Conformal Conic
Datum: NAD83
Spheroid: GRS80



State of Oregon
Department of State Lands
775 Summer St. NE, Suite 100
Salem, OR 97331
503-988-5200
www.oregon.gov/DSL



Source: Oregon Department of State Lands, Oregon Department of State Lands, and the GIS user community