

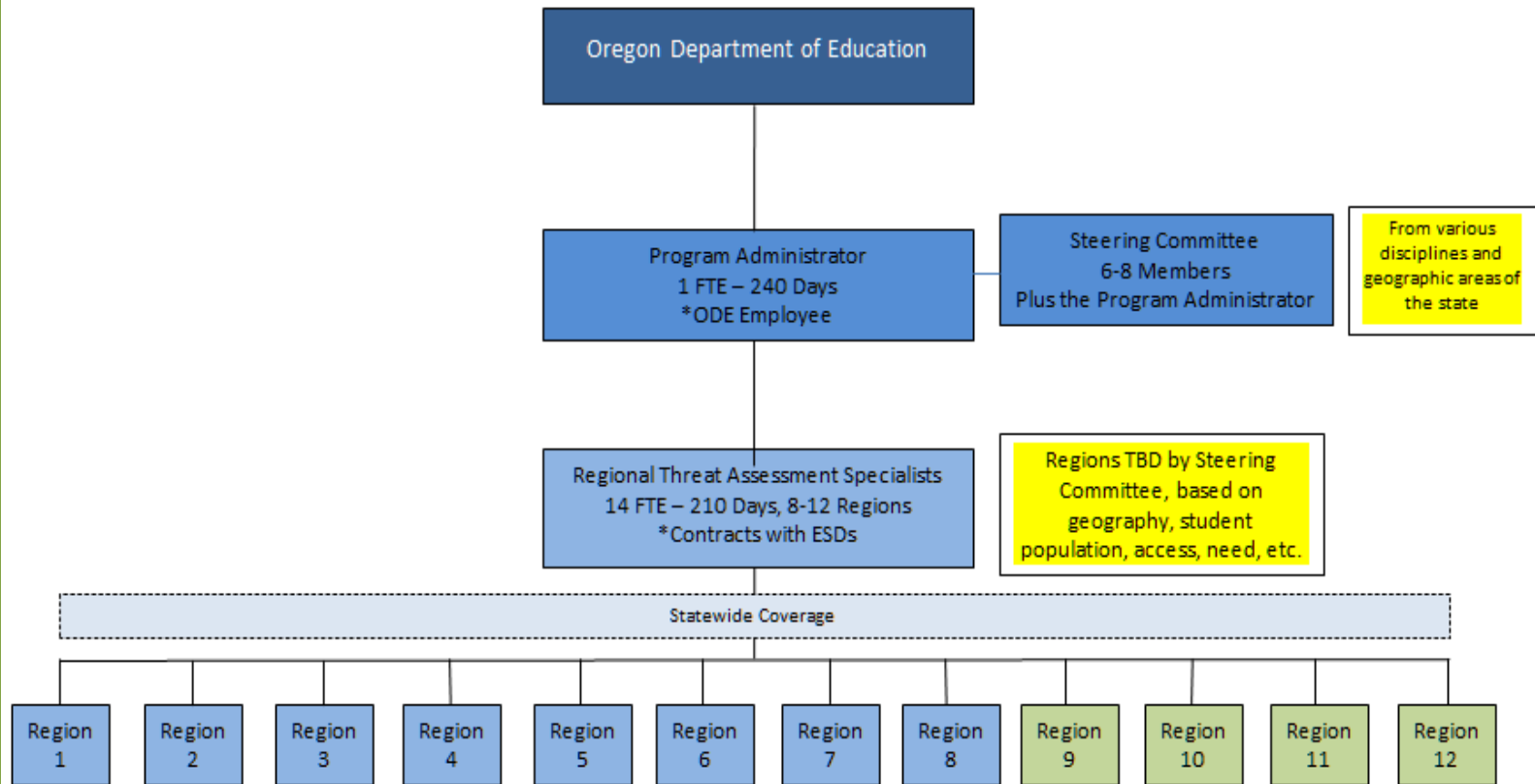
Establishing a Statewide Threat Assessment System for Oregon Schools

A Recommendation from the Oregon
Task Force on School Safety

Dave Novotney, Ph.D.
Superintendent, Willamette ESD

A Statewide System

A Statewide Student Threat Assessment System



A Statewide System

- The system would establish multiple regions across the state, with one or more Regional Threat Assessment Specialists designated to support each region.
- System staffing would consist of...
 - 1 FTE Program Administrator (ODE)
 - 14 FTE Regional Threat Assessment Specialists (ESDs)



A Statewide System

- The role of the Regional Threat Assessment Specialists would be to...
 - Train key school staff in the region to use Level 1 protocols in school-based threat screenings.
 - Consult with school and community-based threat assessment teams.
 - Coordinate Level 2 protocols, deploying multi-disciplinary teams to schools to assess risk and assist in supports and interventions.



A Statewide System

- The role of the Regional Threat Assessment Specialists would be to...
 - Serve as a representative on regional multi-agency threat assessment teams that review Level 2 assessments and help provide community services.
 - Ensure program fidelity.





This is what prevention looks like.

Proposed Budget

Proposed Budget

Annual Program Costs	Anticipated Costs
Salaries, including APC and Benefits (8 FTE)	\$1,502,005
Training	\$125,561
Technology	\$24,000
Professional Development	\$81,171
Mileage	\$91,000
Purchased Services	\$50,000
Dues	\$8,000
Supplies	\$30,000
Indirect	\$132,917
Total	\$2,044,654

\$4.1 million for the biennium





**Ordinary school days don't make the news.
But that doesn't mean ordinary is easy.**

Oregon's students face countless challenges and pressures every day—at school, at home, at work and at play.

Most are able to cope with the stress. But others turn to self-destructive behavior—cutting, substance abuse and suicide.

Sometimes, they focus their frustration on external targets—hurting people and property around them. On rare but devastating occasions, they become violent at school.

The goal of threat assessment is to make every day an ordinary school day.

- John Van Dreal
Director, Safety and Risk Management Services
Salem Keizer Public Schools

A threat assessment system uses early interventions to keep students safe. Using an evidence-based, multidisciplinary approach, it is used to identify, evaluate and support students who present a potential threat to themselves or others.

At each level, the teams work with students, families and the community to provide wraparound supports designed to break negative patterns and steer youth in a positive direction.

How the threat assessment system works:

When a student or students are identified as a potential risk to themselves or others, they are assessed using a two-tier approach:

Level 1

A trained school-based team, including a school administrator, a counselor/mental health representative and a law enforcement officer, works together to understand the threat, the risk and resources the school has to address it.

Level 2

If the school team determines the situation is high risk, that it needs help with the investigation or it lacks necessary resources, it calls in a community-based multidisciplinary team of education, mental health and law enforcement professionals.





This is what prevention looks like.

Thank You!