

OREGON DEPARTMENT OF AGRICULTURE 2017-19 GOVERNOR'S BUDGET

Ways and Means Subcommittee
on Natural Resources



KEY TAKE-HOME MESSAGES

- Achieve goals and desired outcomes through technical expertise and strong relationships with partners.
- Fulfill unique niches – regulatory, fee-for-service, technical assistance, marketing – to accomplish desired outcomes.
- Adapt to agricultural, food, and customer trends and market demands.
- Long-term stable funding will help ODA to achieve desired outcomes.



MISSION AND CORE VALUES

Three-fold mission

- Ensure food safety and provide consumer protection
- Protect the natural resource base for present and future generations of farmers and ranchers
- Promote economic development and expand marketing opportunities for Oregon agricultural products

Core values

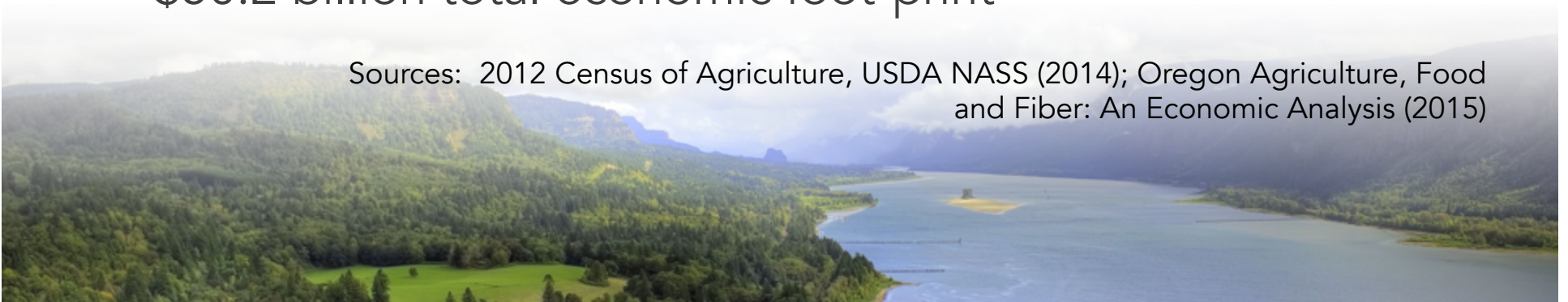
- Honesty, integrity, and fairness
- Technical and professional competence
- Respect for people and property
- Practical approaches to problem solving
- Quality customer service










OREGON AGRICULTURE OVERVIEW

- 35,439 farms and ranches
 - ~97% of farms in Oregon are family-owned
 - ~2% of farms are in organic production with approximately 4% of the total farm sales
 - 39% of Oregon farmers are women
 - 225 agricultural commodities
- Provides 13.8 percent of full or part-time jobs in Oregon
- ~\$5 billion farm gate value
- \$50.2 billion total economic foot-print

Sources: 2012 Census of Agriculture, USDA NASS (2014); Oregon Agriculture, Food and Fiber: An Economic Analysis (2015)



Oregon's top 20 commodities

#1	#2	#3	#4
 cattle & calves	 greenhouse & nursery	 hay	 milk
#5	#6	#7	#8
 grass seed	 wheat	 potatoes	 pears
#9	#10	#11	#12
 grapes for wine	 onions	 Christmas trees	 eggs
#13	#14	#15	#16
 blueberries	 hazelnuts	 cherries	 mint
#17	#18	#19	#20
 apples	 sweet corn	 blackberries	 crab

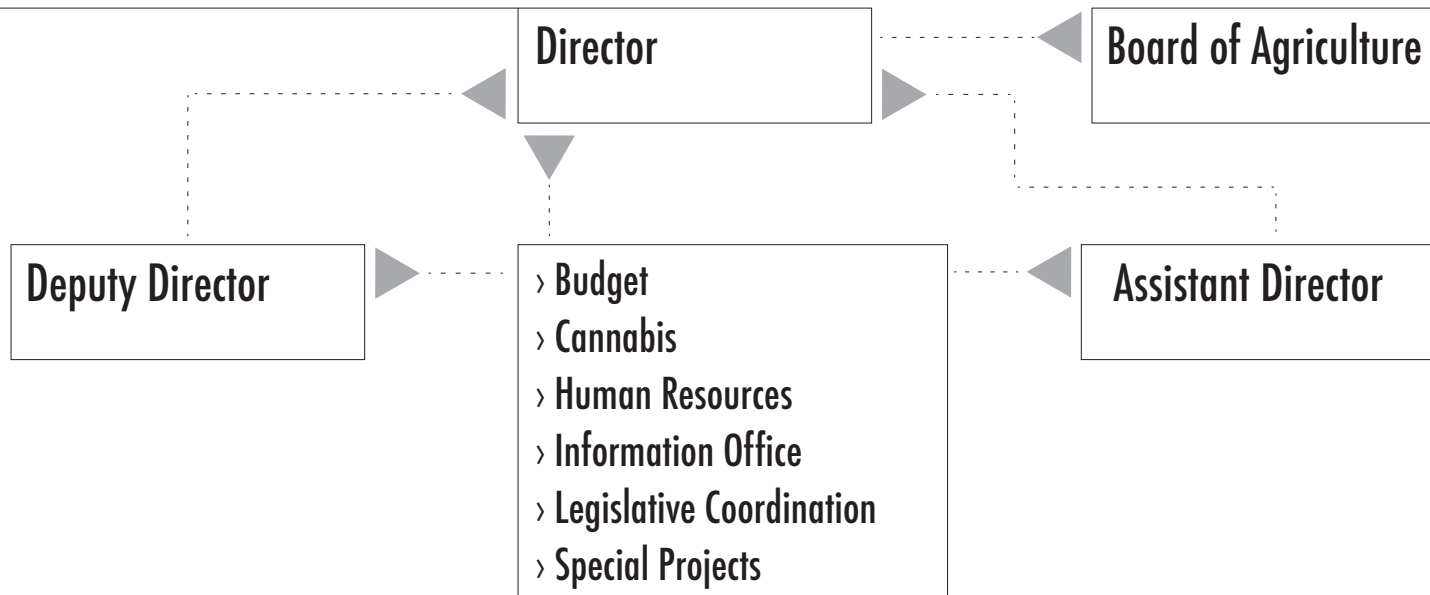
Based on data and estimates from National Agricultural Statistics Service, Oregon Department of Agriculture, Oregon State University, and the Oregon Department of Fish & Wildlife. See more stats online: bit.do/FactsFigures



PROGRAM AREAS

What we do
Desired program goals
How we achieve desired outcomes

Agency Working Organizational Chart

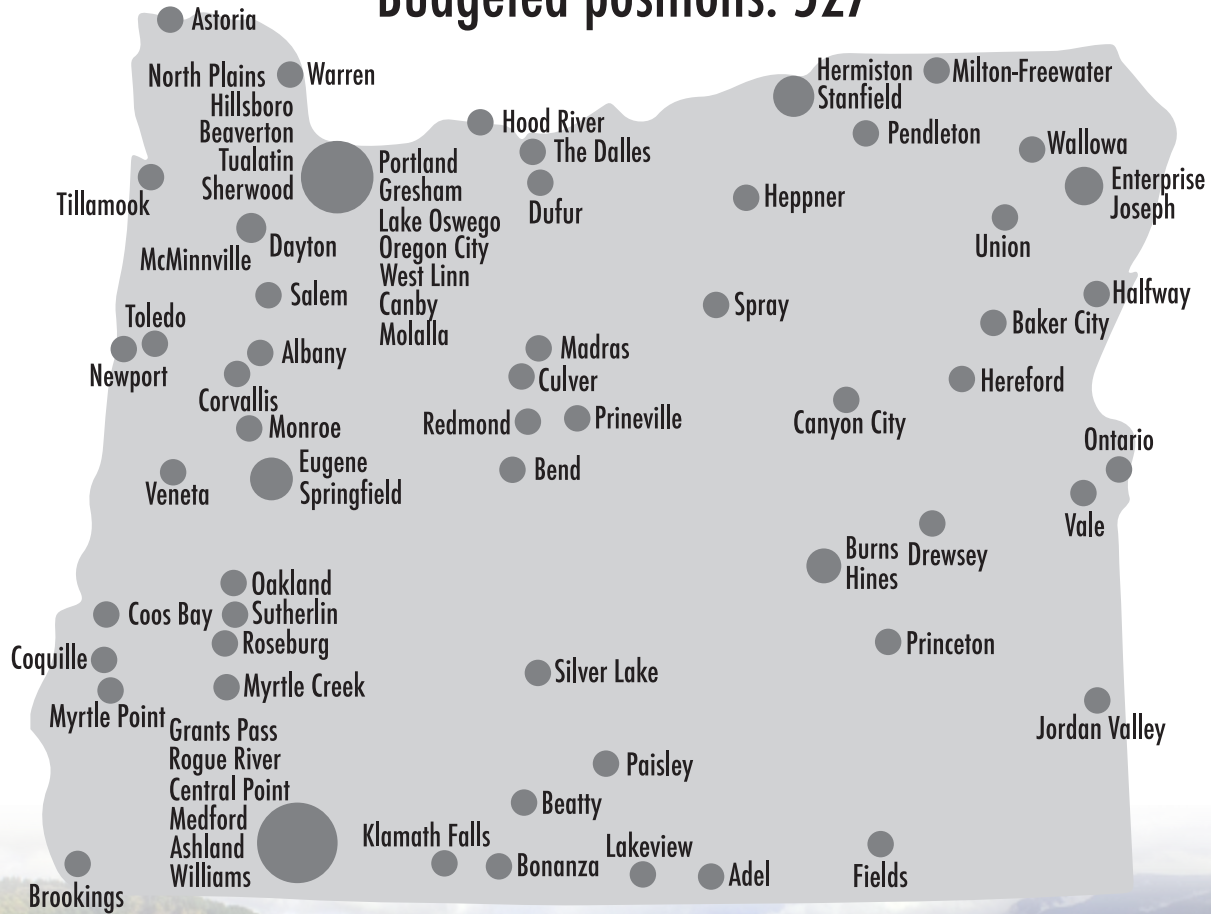


Market Access & Certification Programs	Food Safety & Animal Health Programs	Natural Resource Programs	Plant Protection & Conservation Programs	Internal Service & Consumer Protection Programs
<ul style="list-style-type: none"> › Agricultural Development & Marketing › Certification Services › Commodity Commissions Oversight › Commodity Inspection › Farm to School Program › Industrial Hemp › Plant Health Lab › Seed Program › Shipping Point Inspection › Specialty Crop Block Grant Program 	<ul style="list-style-type: none"> › Animal Health & Lab › Animal Identification › Commercial Animal Feeds › Food Safety › Shellfish Biotoxin Testing › Shellfish Plat Leasing › State Veterinarian 	<ul style="list-style-type: none"> › Agricultural Water Quality › Confined Animal Feeding Operations › GIS Mapping › Land Use › Pesticide Analytical & Response Center › Pesticide & Fertilizer Programs › Smoke Management › Soil & Water Conservation Districts Program 	<ul style="list-style-type: none"> › Insect Pest Prevention & Management › Noxious Weed Program › Nursery & Christmas Tree Program › Nursery Research Grant Program › Native Plant Conservation 	<ul style="list-style-type: none"> › Egg Laying Hens › Laboratory Services › Metrology Lab › Motor Fuel Quality › Weights & Measures › Wolf Compensation

ODA Staff by Location

ODA provides services across the state with field staff based in strategic geographic locations.

Budgeted positions: 527



Note: Larger circles reflect multiple cities in the region, not quantity of employees.



MARKET ACCESS & CERTIFICATION PROGRAM SERVICES

Assist Oregon's agricultural producers, processors and fishers in their efforts to successfully sell and ship products to local, domestic, and international markets

MARKET ACCESS & CERTIFICATION PROGRAM GOALS

- Increase economic viability of Oregon's agricultural and food sector by:
 - Supporting local, domestic, and international business needs of local companies
- Inspecting, auditing, and certifying Oregon agricultural products to meet marketplace expectations



LOCAL MARKET SUPPORT

- Food Corps
- Oregon School Nutrition Association Trade Show
- School gardens
- Pilot state for USDA Unprocessed Fruit and Vegetable Program
- Celebrate Oregon Agriculture campaign
- Administer USDA grants
 - Specialty Crop Block Grant Program
 - National Organic Cost Share Reimbursement Program
 - Farm Direct Nutrition Program



DOMESTIC MARKET SUPPORT

- Created opportunities through:
 - Natural Products Expo West with Team Oregon
 - Produce Marketing Association Fresh Summit
 - NW Food and Beverage Expo (2017)
- Support recruitment efforts, expansion, and market development for Oregon companies by assisting with identifying grant opportunities, technical assistance, etc..
 - Machinery and Equipment Certification
 - Value added producer grants
 - Oregon Food and Beverage Roadmap
 - Other USDA grants



INTERNATIONAL MARKET SUPPORT

- Work directly with foreign governments to resolve trade barriers for Oregon products
- Work to identify opportunities that fit Oregon's agricultural and food sector by market based on country demographics
- Work with transportation providers to get Oregon products to market



INSPECTIONS, AUDITS & CERTIFICATIONS

- Provide voluntary, third-party verification and certification services
 - National Organic Program
 - Global Food Safety Initiative
 - Weed Free Forage
 - Phytosanitary certificates
 - Certificates of free-sale
 - Third-party grading
 - Seed sampling for export
 - Good Agricultural and Good Handling Practices
- Developed and offer official ODA sampling and testing on products to meet market demand
- Developed, implemented and administer a hemp program
 - Register hemp growers and handlers





FOOD SAFETY & ANIMAL HEALTH PROGRAM SERVICES

Inspects many facets of Oregon's food production and distribution system (except restaurants) to ensure food is safe for consumption, protect and maintain animal health, ensure animal feeds meet nutritional and labeling standards, and prevent livestock theft.

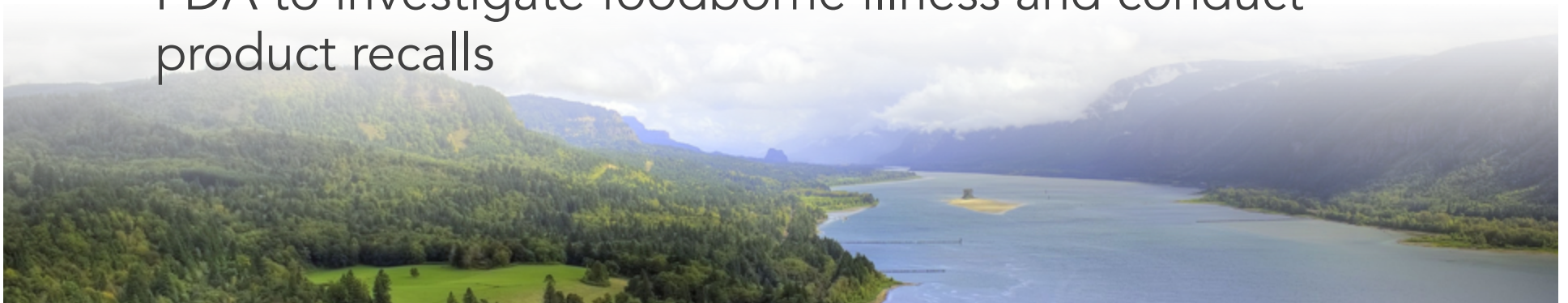
FOOD SAFETY & ANIMAL HEALTH PROGRAM AREA GOALS

- Assure a safe, wholesome, and properly labeled food product supply through technical assistance and regulation
- Prevent, control, and eliminate diseases harmful to livestock, poultry, and humans
- Provide livestock identification services
- Regulate sale and distribution of commercial feeds



SERVICES FOR A PROTECTED FOOD SUPPLY

- Inspect and license food processors and retail food establishments to ensure sanitary conditions
 - “Risk based” inspection program
- Provide technical assistance to start-up food companies to ensure compliance with food safety regulations and guidelines
 - Newest business sector: cannabis
- Coordinate with the Oregon Health Authority and the FDA to investigate foodborne illness and conduct product recalls



SERVICES FOR A PROTECTED FOOD SUPPLY (CONT'D)

- Operate surveillance and testing programs for dairy products and shellfish to allow for interstate and international shipment
- Work with Oregon's farmers and food sector to prepare for the Food Safety Modernization Act (FSMA)
 - Engaged in national policy discussions and work with Oregon stakeholders on implementation



FOOD SAFETY PROGRAM SOS AUDIT

- Performance audit results
 - Time is spent on duties not related to inspections (e.g. training, answering customer questions)
 - Contract federal inspections are more time consuming than routine state inspections
 - Involvement with the federal Manufactured Food Regulatory Program Standards results in less time available for routine state inspection
 - Increased number of firms has created a backlog
- ODA is developing a strategic response to address the recommendations



PREVENT, CONTROL, AND ELIMINATE ANIMAL DISEASE

- Track interstate health and movement of livestock and poultry to prevent disease outbreaks in Oregon
 - Launched new database to facilitate traceability
- ODA State Veterinarian partners to identify emerging disease risks and implement strategies to maintain Oregon's disease free status
- ODA Animal Health Laboratory partners with other laboratories to complete diagnostic work
- Administer Oregon Veterinary Emergency Response Team



LIVESTOCK IDENTIFICATION SERVICES

- Provide livestock identification services
 - Register approximately 11,000 brands
- Inspect over one million cattle at the point of sale
 - Country inspections
 - Livestock auction markets
- Assist law enforcement with theft investigations



COMMERCIAL FEED SERVICES

- Provide consumer protection
 - License and inspect commercial animal feeds
 - License facilities that manufacture, wholesale, or register commercial animal feeds
 - Investigate possible cases of illness associated with feeds
 - Provide technical assistance regarding the manufacturing, sales and distribution of commercial feed
- Participate in national policy animal feed discussions
 - Association of American Feed Control Officials





PLANT PROTECTION & CONSERVATION PROGRAMS

Protect Oregon's agricultural industries and natural resources from harmful invasive plant pests and noxious weeds; enhance value and marketability of exported nursery stock, Christmas trees, seeds and other agricultural products; and further the conservation of threatened and endangered plants.

PLANT PROTECTION & CONSERVATION PROGRAM GOALS

- Protect agricultural and natural resources by preventing the introduction of invasive species (pests, plant diseases, and weeds) through early detection
- Rapid response to invasive species
- Promote and enhance agricultural market access
- Protect threatened and endangered native plants



PREVENT INVASIVE SPECIES

- Adopt and enforce plant protection quarantines
- Focus on early detection
 - Installed over 16,000 traps with 300 remote controlled traps
 - 23 Invasive Pests surveys
 - 337 Invasive Noxious weed surveys
- Maintain the noxious weed list and “100-Worst List”
 - Helps prioritize statewide noxious weed control



RAPID AND EFFECTIVE RESPONSE

- Completed Asian gypsy moth eradication in NW Portland
- Detected largest Japanese beetle infestation in Oregon's 70+ years history in NW Portland
- Detected light brown apple moth in Polk County
- Use biocontrol measures when possible:
 - Released 77 species of biological agents against 31 species of noxious weeds since the program's inception
 - Testing parasitic wasp for release against brown marmorated stink bug
 - Released natural enemies against ash white fly and other pests
- Utilize Scanning Electron Microscopy to allow for rapid insect identification



CERTIFYING PLANT PRODUCTS AS DISEASE AND PEST FREE

- Help secure domestic and international market access
- New inspection and certification techniques for nursery products and Christmas trees
- Collaborated on the publication of "*Best Management Practices for Christmas Tree Export*"
- Use polymerase chain reaction (PCR) to genetically identify Christmas tree invasives



PROTECTING RARE PLANTS

- Collaborate with agencies, organizations, businesses, and individuals to conserve Oregon's rich native plant diversity
- Develop methods to protect, recover and reintroduce threatened and endangered plants
 - Crater Lake-Klamath Falls Regional Airport Applegate's milkvetch
 - Collected seedlings of the extremely rare Columbia yellowcress for cultivation
- Evaluate factors that limit rare species recovery





NATURAL RESOURCE PROGRAMS

Addresses water quality and natural resource conservation on agricultural lands, appropriate use of pesticides, labeling and sale of fertilizer, and field burning in the Willamette Valley.

NATURAL RESOURCE PROGRAM GOALS

- Prevent pollution from agricultural activities and protect water quality
- Regulate sale, distribution, and use of pesticide and fertilizer products
- Protect Oregon agricultural land use so future generations can continue to farm
- Assure adequate water is available



WATER QUANTITY AND QUALITY SERVICES

- Develop and implement plans to prevent run-off from agricultural lands with coordination from DEQ, ODF, OWEB, ODFW, and other natural resource partners
 - Identified and adopted Strategic Implementation Initiative to assist in quantifying improvements
- Work with 45 Soil and Water Conservation Districts to provide local level, site specific solutions to protect Oregon's environment and economy



WATER QUANTITY AND QUALITY SERVICES (CONT'D)

- Work with DEQ to develop and issue confined animal feeding operation permits
- Conduct inspections on permitted animal operations to assess compliance with state water quality regulations
- Represent needs of agriculture to satisfy demands for water quantity



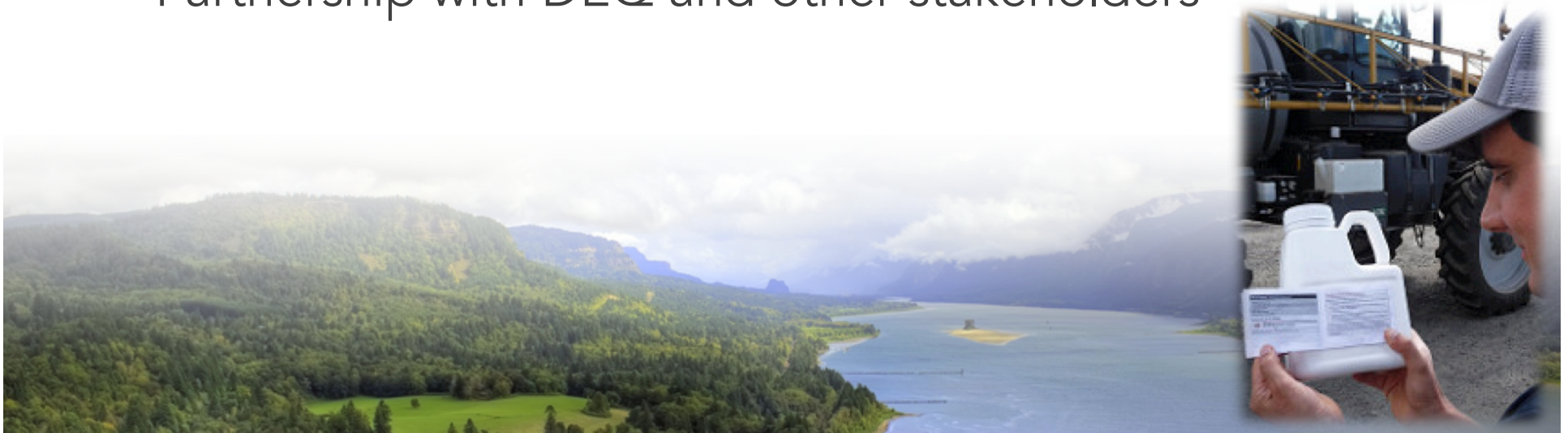
PESTICIDE PROGRAM SERVICES

- Register and license 12,000 pesticide products
- License 13,000 commercial pesticide applicators, operators, and pesticide dealers
- Provide education and outreach to train public and licensed users
- Conduct on-site pesticide investigations ~ 500 cases annually
 - Complaint generated (~250 cases)
 - Routine compliance monitoring (~250 cases)



PESTICIDE PROGRAM SERVICES (CONT'D)

- Provide public support/services (as it relates to pesticides)
 - Pesticide Analytical and Response Center (PARC)
 - 24 hour reporting hotline (2-1-1)
 - Citizen advocate
- Continued implementation of the Pesticide Stewardship Partnership with DEQ and other stakeholders



FERTILIZER PROGRAM SERVICES

- Register 10,500 fertilizer, soil, minerals, soil amendments, and lime products
- License 150 fertilizer manufacturers, and distributors



PROTECTING AGRICULTURAL LAND

- Advocate for the protection of agricultural land-use and common and accepted farm practices
- Advocate for agricultural and rural communities before authorizing non-farm uses on farm land





INTERNAL SERVICES & CONSUMER PROTECTION PROGRAMS

Provides consumer protection, ensures fair competition among businesses, facilitates interstate commerce and international trade, and administers special programs.

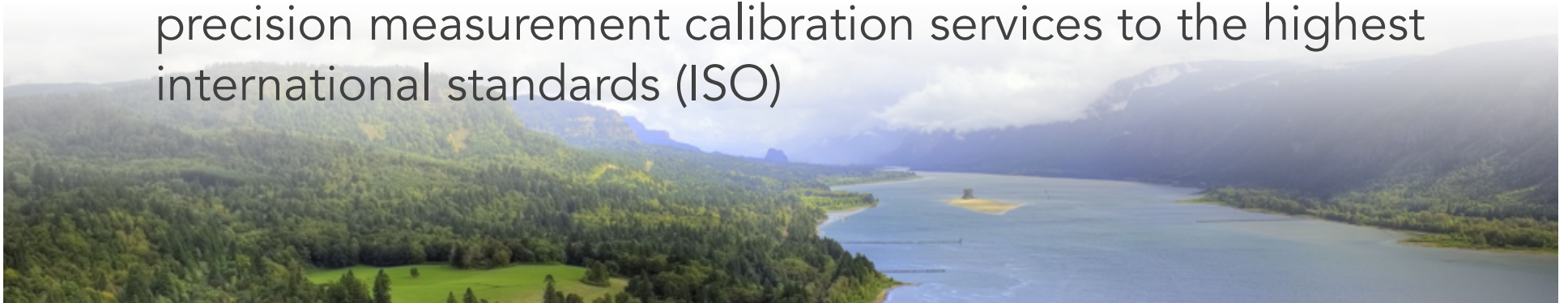
INTERNAL SERVICES AND CONSUMER PROTECTION PROGRAM GOALS

- Ensure the accuracy, validity, uniformity, and confidence in Oregon's Commercial Weighing System
- Ensure motor fuels sold in Oregon meet national quality standards
- Provide safe, accurate, timely, and cost-effective laboratory analysis and technical support to ODA's regulatory programs and other local, state, and federal agencies
- Provide analytical and technical support for moving value-added food products to domestic and foreign markets



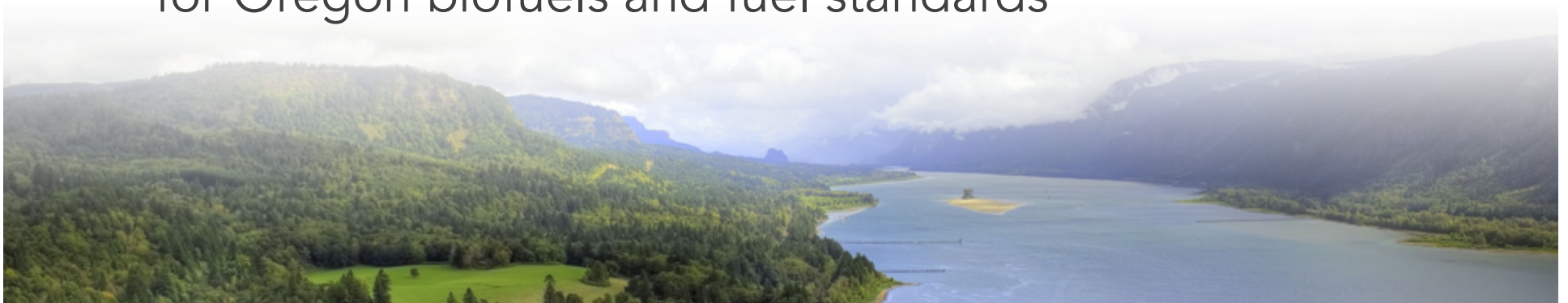
CONFIDENCE FOR OREGON'S COMMERCIAL WEIGHING SYSTEM

- ODA Metrology Lab
 - Maintains state standards for weight and volume
 - Achieved the highest accreditation from the National Institute of Standards and Technology (NIST) – Echelon One
 - Provide calibration services to Oregon businesses
- Check scales and meters to ensure accuracy and uniformity when commercial transactions are based on physical measurement
- Keep Oregon's high-tech companies competitive with precision measurement calibration services to the highest international standards (ISO)



ENSURING MOTOR FUEL STANDARDS

- Test motor fuel to prevent distribution of poor quality fuels
 - 3,500 field screenings of fuel/year
 - 120 official samples sent to private lab and tested/year
 - 3,700 fuel storage tanks tested for water/sediment/year
- Participate in national policy discussions regarding quality standards of biofuels and motor fuels
- Respond to consumer complaints and industry questions for Oregon biofuels and fuel standards



REGULATORY LAB SERVICES

- Support ODA's regulatory functions with official state testing services
 - Provide laboratory analysis of samples collected during agency investigations such as pesticide residues, water quality, fertilizer analysis, shellfish, cannabis, etc...
- Obtained ISO accreditation from the American Association for Laboratory Accreditation
- Operational six days/week



REGULATORY LAB SERVICES (CONT'D)

- Recognized and approved by the governments of Japan, Korea, and Taiwan to provide pre-shipment inspection, label review, and testing for export food and agricultural products
- Offering analytical service increases the competitiveness of Oregon businesses and products in export markets
- Working to implement a new Laboratory Information Management Service



OTHER PROGRAM SERVICE

- Begin inspection program for egg-laying hen cage size
 - SB 805 (2011)
- Work to ensure imported eggs are compliant with egg-laying hen cage size standards





ADMINISTRATION & SUPPORT SERVICES

Manages executive functions of the agency and provides critical core infrastructure and technical support for agency programs and customers.

ADMINISTRATION & SUPPORT SERVICES GOALS

- Strive for continuous improvement within the agency to gain efficiencies
- Identify coordination among ODA programs for better delivery of core business functions and enhanced customer service.
- Continue to work collaboratively with Oregon natural resource agencies, industry partners, interest groups, other states and federal partners to achieve positive outcomes.



COLLABORATIVE COORDINATION

- Help implement and pave the way for statewide coordination for key initiatives
 - Cannabis policy, Sage grouse, Food and Beverage Roadmap
- Coordinate with sister agencies on natural resource policy issues
- Provide a safe harbor for growers/fishermen and dealers/processors to negotiate price
- Administer the Wolf Depredation Compensation and Financial Assistance County Grant Program
- Administer a farm mediation program





AGENCY PERFORMANCE

Key Performance Measures
Customer Service Survey
Accomplishments and Improvements
Challenges

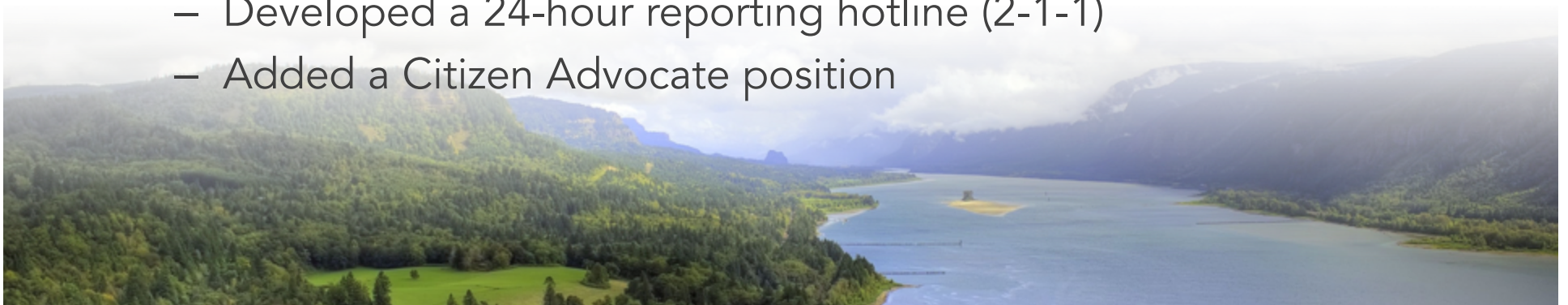
2016 KEY PERFORMANCE MEASURE SUMMARY

- 5 Key Performance Measures are meeting or exceeding targets
 - KPM No. 2,3,5,10, and 11
- 6 Key Performance Measures are not meeting targets
 - KPM No. 1, 4, 6, 7, 12, and 13
- 2 Key Performance Measures – data not yet available
 - KPM No. 8 and 9



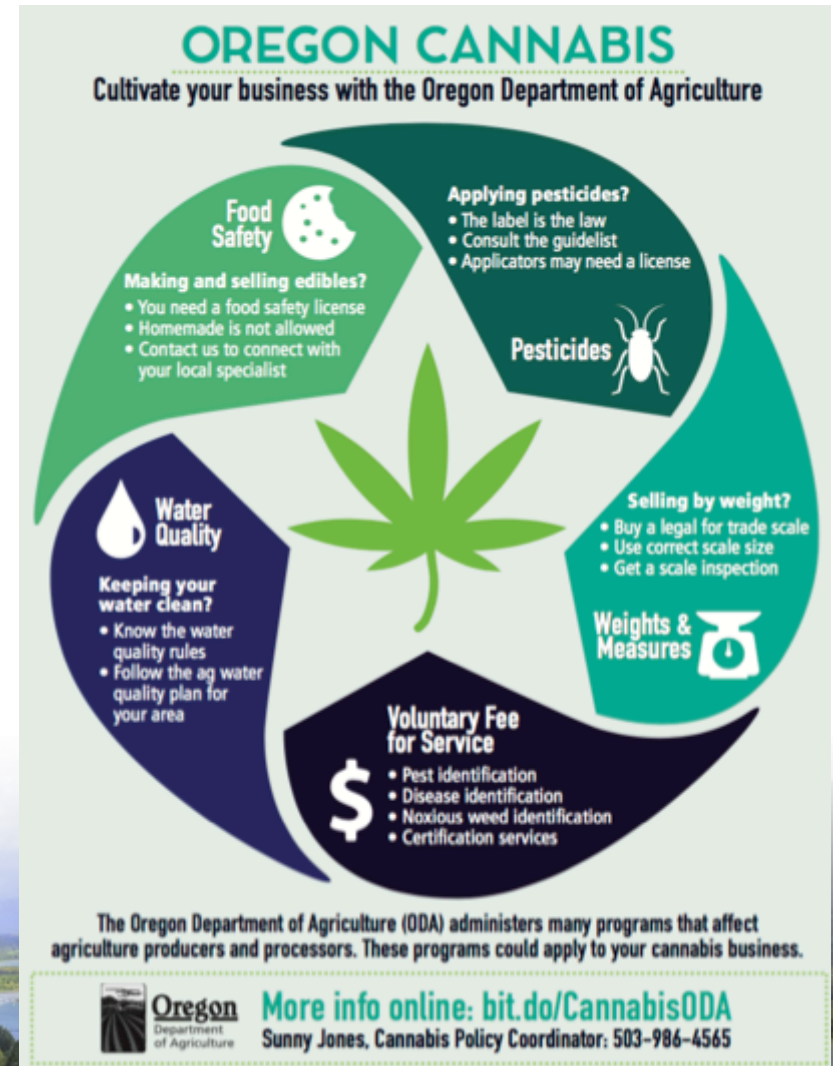
ACCOMPLISHMENTS & IMPROVEMENTS

- Completed the state's second largest Asian gypsy moth eradication in the Portland area
- Regulatory lab achieved ISO17025:2005 accreditation granted by the American Association for Laboratory Accreditation
- Metrology lab achieved no non-conformances from the National Voluntary Laboratory Accreditation Program
- Enhanced Pesticide Program customer service features
 - Added an online pesticide use complaint reporting option
 - Developed a 24-hour reporting hotline (2-1-1)
 - Added a Citizen Advocate position



ACCOMPLISHMENTS & IMPROVEMENTS (CONT'D)

- Cannabis
 - Integration
 - Marijuana
 - Implementation
 - Hemp
 - Coordination
 - State wide agency coordination
 - OHA, OLCC, ODA
 - Attend stakeholder events as invited
 - Started coordination with western states



OREGON CANNABIS
Cultivate your business with the Oregon Department of Agriculture

Food Safety
Making and selling edibles?

- You need a food safety license
- Homemade is not allowed
- Contact us to connect with your local specialist

Pesticides
Applying pesticides?

- The label is the law
- Consult the guidelist
- Applicators may need a license

Water Quality
Keeping your water clean?

- Know the water quality rules
- Follow the ag water quality plan for your area


Weights & Measures
Selling by weight?

- Buy a legal for trade scale
- Use correct scale size
- Get a scale inspection

Voluntary Fee for Service

- Pest Identification
- Disease Identification
- Noxious weed Identification
- Certification services

The Oregon Department of Agriculture (ODA) administers many programs that affect agriculture producers and processors. These programs could apply to your cannabis business.

 **More info online: bit.do/CannabisODA**
Sunny Jones, Cannabis Policy Coordinator: 503-986-4565

ACCOMPLISHMENTS & IMPROVEMENTS (CONT'D)

- Added six new water quality Strategic Implementation Areas
- Implemented a pilot monitoring project in Tillamook Bay to determine if shellfish closure events can be more targeted
- Developed and hosted first Specialty Crop Block Grant Program National Conference in Portland
- Received approval from USDA to conduct organic livestock certifications
- Developed an Avian Influenza educational initiative



ACCOMPLISHMENTS & IMPROVEMENTS (CONT'D)

- State Controller Gold Star Certificates for ODA and Commodity Commissions
- Enhanced online license renewal system
 - Added voucher payment option
 - Added brand renewals, veterinary product registrations
- Improve social media outreach/engagement
 - Continuous improvement to website
 - Migration in 2014, more mobile format
 - Increase use of social media tools to inform and engage



CHALLENGES

- Co-existence
- Complexity of issues have increased program costs
 - Investigations, outreach, and laboratory analysis
- Complexity of issues have increased legal costs
- Unanticipated costs as a result of core program work
 - Asian gypsy moth eradication (Spring 2016)
 - Japanese beetle (proposed 5 year eradication plan)
 - Light brown apple moth (proposed eradication plan)



CHALLENGES (CONT'D)

- Meeting both core program demands as well as new initiatives
 - Cannabis implementation and integration
- Public records requests
 - Increase in the number and complexity of requests
- Staff training
- Information and Technology resources
- Inefficiencies of laboratory work space
- Dependence on federal funding
- Succession planning





WHERE WE ARE GOING

Strategic Plan
Issues/Challenges for 2017-19
Plans for improving program delivery
Proposed legislation

STRATEGIC PLAN

- Last plan was developed in 2003
- Started development in January 2016
- Collected feedback from staff, State Board of Agriculture, and partners
 - Over 220 individuals provided feedback
- Developing six key objectives with corresponding metrics and tactics
- Goal is to have a plan completed by Fall 2017



DRAFT KEY OBJECTIVES

- Operate as a role model organization
- Operate in a culture of compliance and support
- Embrace a culture of collaboration
- Foster employee excellence
- Strive for clear, concise, and inclusive communication
- Support the diversity of Oregon agriculture



TOP ISSUES FOR 2017-19

- Co-existence
- Cannabis (marijuana and hemp)
- Food Safety Modernization Act
- Invasive species eradication efforts
 - Japanese beetle
 - Light brown apple moth
- Extreme weather events



TOP ISSUES FOR 2017-19 (CONT'D)

- Ongoing implementation of the Strategic Water Quality Initiative
- Maintain tools for farmers and ranchers
- Support development of Pollinator Protection Plan
- Continue to work toward implementation of the Lab Information Management System
- Agency succession planning
- IT investments for greater efficiencies



TOP ISSUES FOR 2017-19 (CONT'D)

- Maintain delivery of current service levels
- Complete strategic plan
- Ensuring effective engagement and outreach to ODA customers and Oregonians
- Changing expectation of program services for public good
- Continue a culture of on-going improvement



PLANS TO IMPROVE PROGRAM DELIVERY

- Increase cross utilization of program services
- Implement Secretary of State Audit recommendations for the Food Safety Program
- On-going laboratory infrastructure improvements
- Continue improvement of online payment system based on customer feedback
- Continue to make strategic IT investments to leverage efficiencies
- Use new strategies and tools to increase agency engagement



Welcome and help us save the City of Roses!

ODA LEGISLATION

- HB 2554 - Export Product (ORS 632)*
- HB 2255 - Pasteurized Milk Order (ORS 621)*
- HB 2256 - Dietary Supplements (ORS 616)*
- SB 18 - FSMA Rule Authority
- SB 19 - Fuels (ORS 646)*

*Statutory clean up



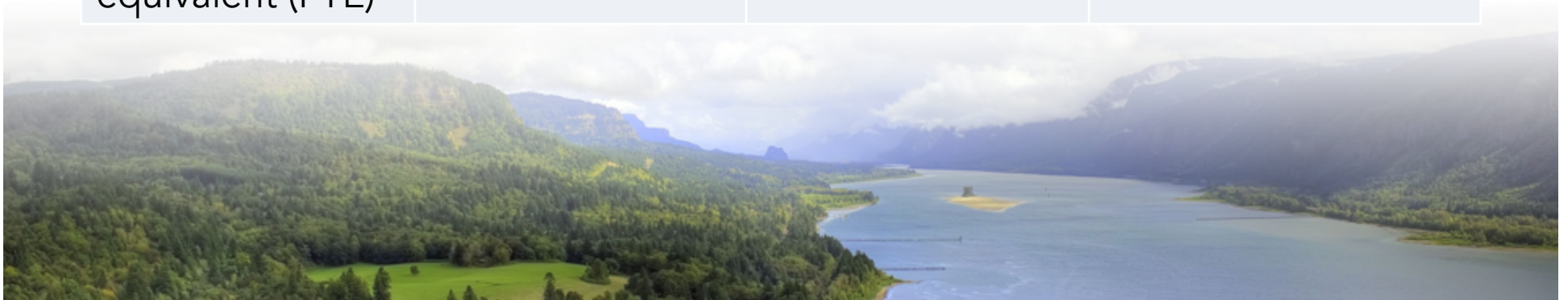


BUDGET

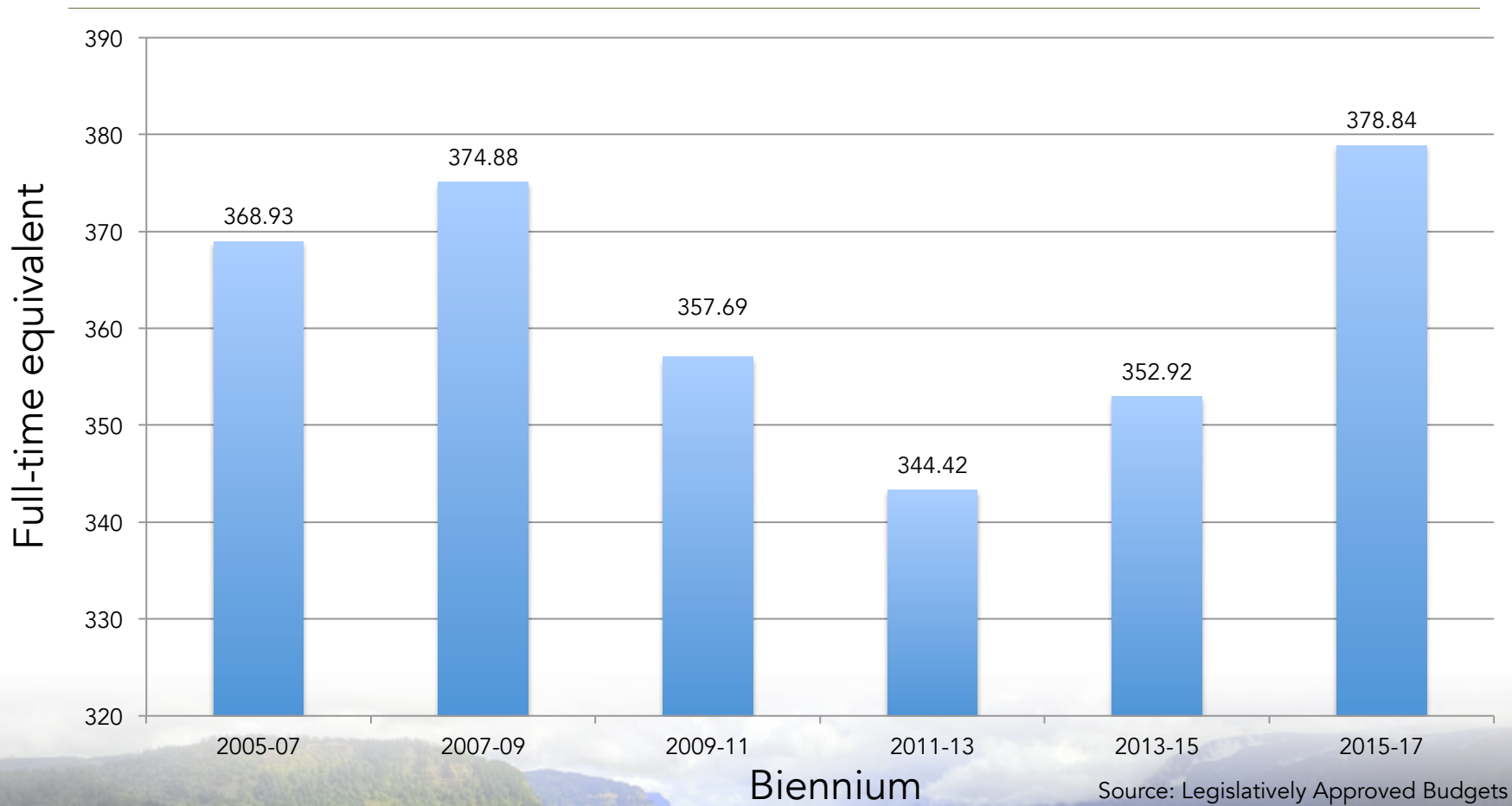
Governor's Budget
Fee Changes
Reduction Options

BUDGET

	2013-15 Leg Approved	2015-17 Leg Approved	2017-19 Governor's Budget
General fund	\$19,460,351	\$24, 613,559	\$23,401,064
Lottery funds	\$6,473,272	\$6,491,591	\$7,042,307
Other funds	\$55,589,067	\$62,478,730	\$68,706,936
Federal funds	\$15,320,730	\$17,630,167	\$18,250,782
Total funds	\$96,843,420	\$111,214,047	\$117,401,089
Full-time equivalent (FTE)	352.92	378.84	391.08



ODA STAFFING



POLICY PACKAGES

- Pkg 120 - Human Resources Staffing
- Pkg 140 - Information Technology Investments
- Pkg 210 - Food Safety Inspectors
- Pkg 220 - Lab Infrastructure Investments
- Pkg 250 - FSMA outreach, education, and capacity building
- Pkg 260 - District vet position clean-up
- Pkg 270 - Continue Manufactured Food positions



POLICY PACKAGES (CONT'D)

- Pkg 280 - Continue Avian Influenza Position (Limited Duration)
- Pkg 285 - Limitation for Weights and Measures Inspectors
- Pkg 290 - Metrology lab equipment replacement
- Pkg 360 - Plant Program position modifications
- Pkg 440 - Shipping Point position modifications
- Pkg 450 - Commodity Commission oversight program limitation increase



FEE CHANGES

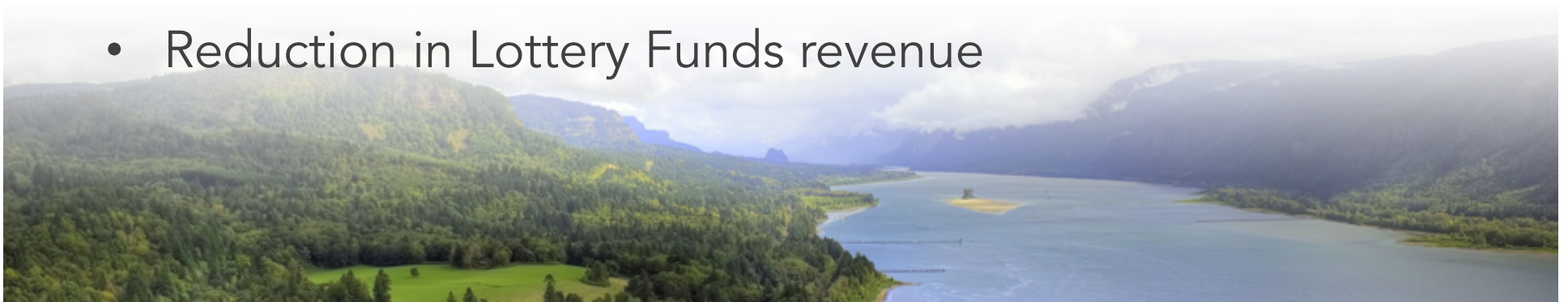
- Pkg 370 - Nursery License Fee Ratification
- ~~Pkg 295 - Scale License Fee Establishment*~~

*Legislative concept has been removed since the development of the Governor's Budget



REDUCTIONS IN GOVERNOR'S BUDGET

- Predator Control - removal of all General Fund
- PARC - one-time fund shift to Other Funds
- Weed Program - remove BioControl Position
- CAFO Program - fund shift to Other Funds
- Ag Development - one-time fund shift to Federal Funds
- IPPM - one-time fund shift to Federal Funds
- Food Safety - one-time fund shift to Other Funds
- General Fund Administration reduction
- Reduction in Lottery Funds revenue



15% REDUCTION OPTIONS

First 5% - \$1.3M General Fund

- Predator Control - removal of all General Fund*
- PARC - one-time fund shift to Other Funds*
- CAFO - fund shift to Other Funds*
- Ag Development - one-time fund shift to Federal Funds*

*Included in Governor's Budget



15% REDUCTION OPTIONS (CONT'D)

Second 5% - \$1.3M General Fund

- IPPM - one-time fund shift to Federal Funds*
- Food Safety - one-time fund shift to Other Funds*
- Weed Program - eliminate a Biocontrol Position*
- Ag Development - eliminate portion of an Admin Specialist position
- Animal Health - fund shift to Other Funds
- Food Safety - additional one-time fund shift to Other Funds

*Included in Governor's Budget



15% REDUCTION OPTIONS (CONT'D)

Third 5% - \$1.3M General Fund

- Food Safety - additional one-time fund shift to Other Funds
- Lab Services- one-time fund shift to Other Funds
- Pesticide Stewardship Partnership - reduce technical assistance
- Animal Health - additional fund shift to Other Funds
- Ag Development - one-time reduction of an Ops & Policy Analyst
- CAFO - additional fund shift to Other Funds
- Administration - one-time fund shift to Other Funds*

*Included in Governor's Budget as a reduction



15% REDUCTION OPTIONS (CONT'D)

First 5% - \$354K Lottery Funds

- Weed Program - eliminate a Noxious Weed Specialist
- Ag Water Quality - reduction to compliance actions & technical assistance
- Ag Water Quality - reduction to riparian long-term evaluation program



15% REDUCTION OPTIONS (CONT'D)

Second 5% - \$354K Lottery Funds

- SWCD - reduce assistance to Soil and Water Conservation Districts
- IPPM - eliminate four laborer positions



15% REDUCTION OPTIONS (CONT'D)

Third 5% - \$354K Lottery Funds

- Ag Water Quality - eliminate a Natural Resource Specialist
- IPPM - eliminate two additional laborers



THANK YOU

Alexis Taylor, Director
Oregon Department of Agriculture
(503) 986-4552
ataylor@oda.state.or.us

