

Oregon Global Warming Commission

Senate Environment and Natural
Resources Committee

February 3, 2017

Angus Duncan, OGWC Chair

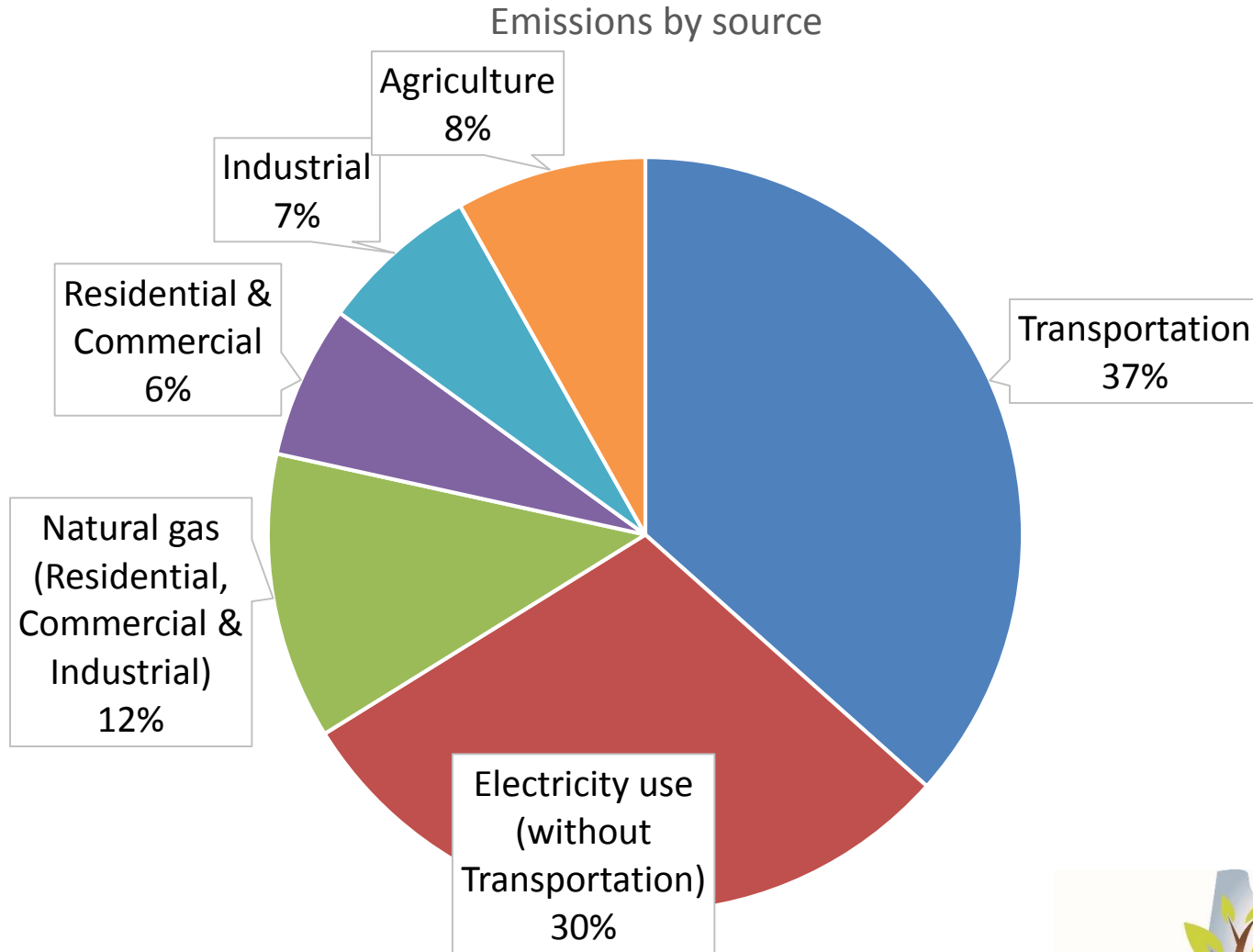


2017 Report Recommendations

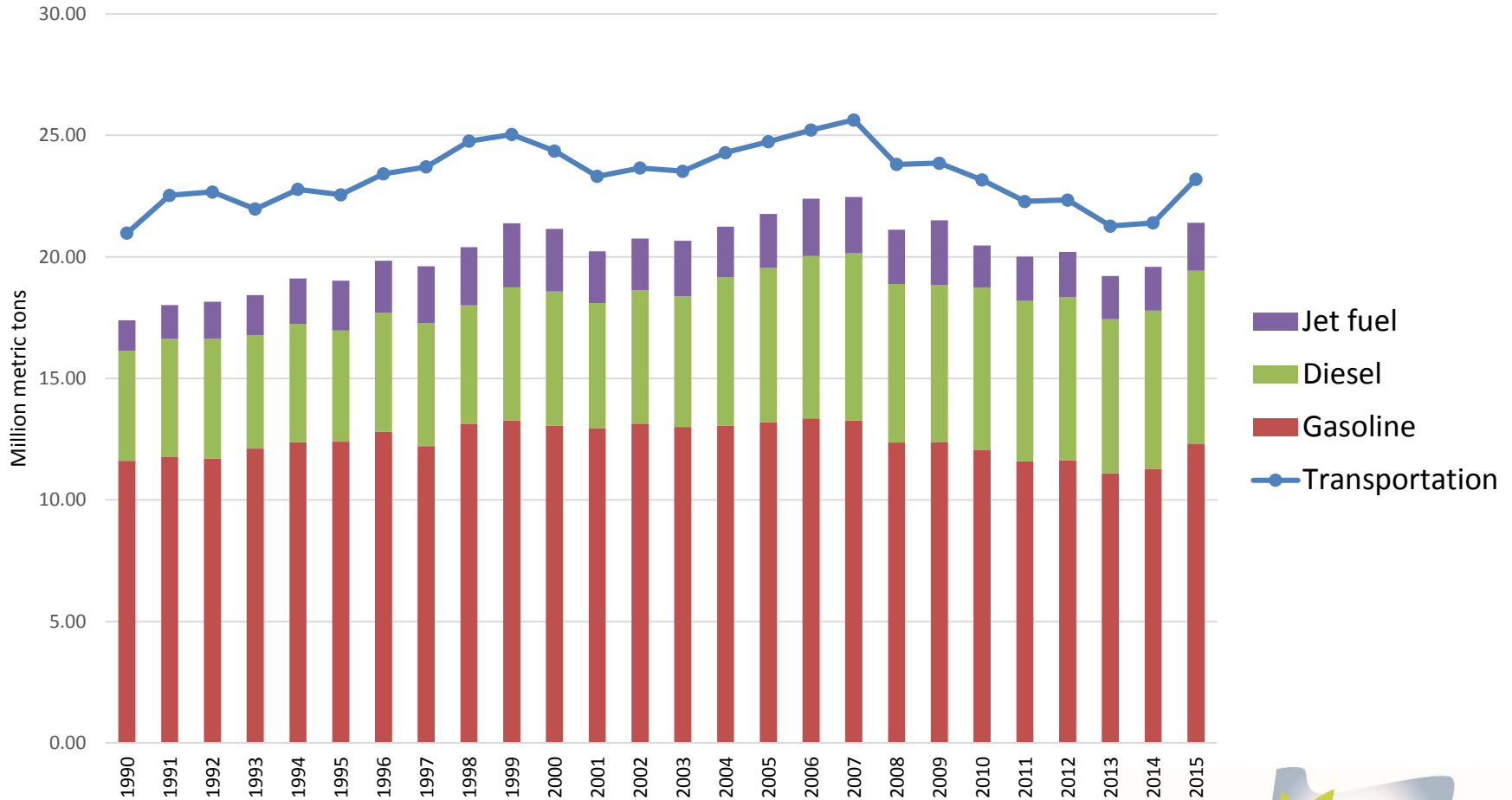
- I. Include “clean transportation” in any 2017 transportation legislation, especially transit and electric vehicles.***

- I. Defer enacting new forest management policies affecting carbon balances in Oregon’s forests until the Forest Carbon Accounting Project is complete and can inform such policies.*
- II. Direct State agencies to work with this Commission to set agency climate assignments and benchmarks, and to provide annual progress reports to the Commission.*
- III. Provide this Commission with sufficient resources – staff and budget – to enable it to discharge its responsibilities including accountability, cost-benefit analysis and citizen communication.*

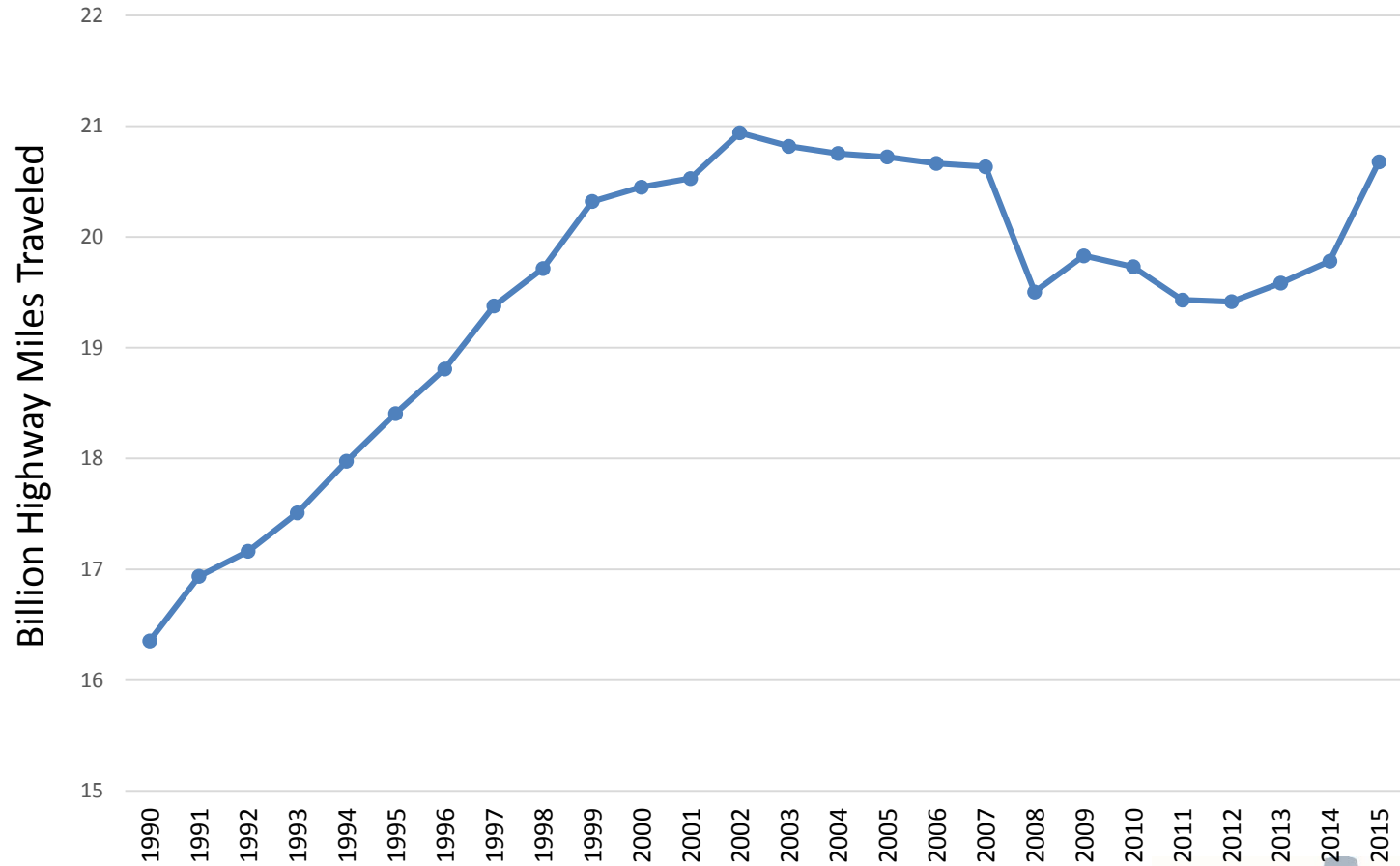
Oregon's 2015 Emissions



Oregon's Transportation Sector Emissions



Oregon Highway Vehicle Miles Traveled



Vehicle Choice

2016 Total US New Car/Truck Fleet (17.55 mm)

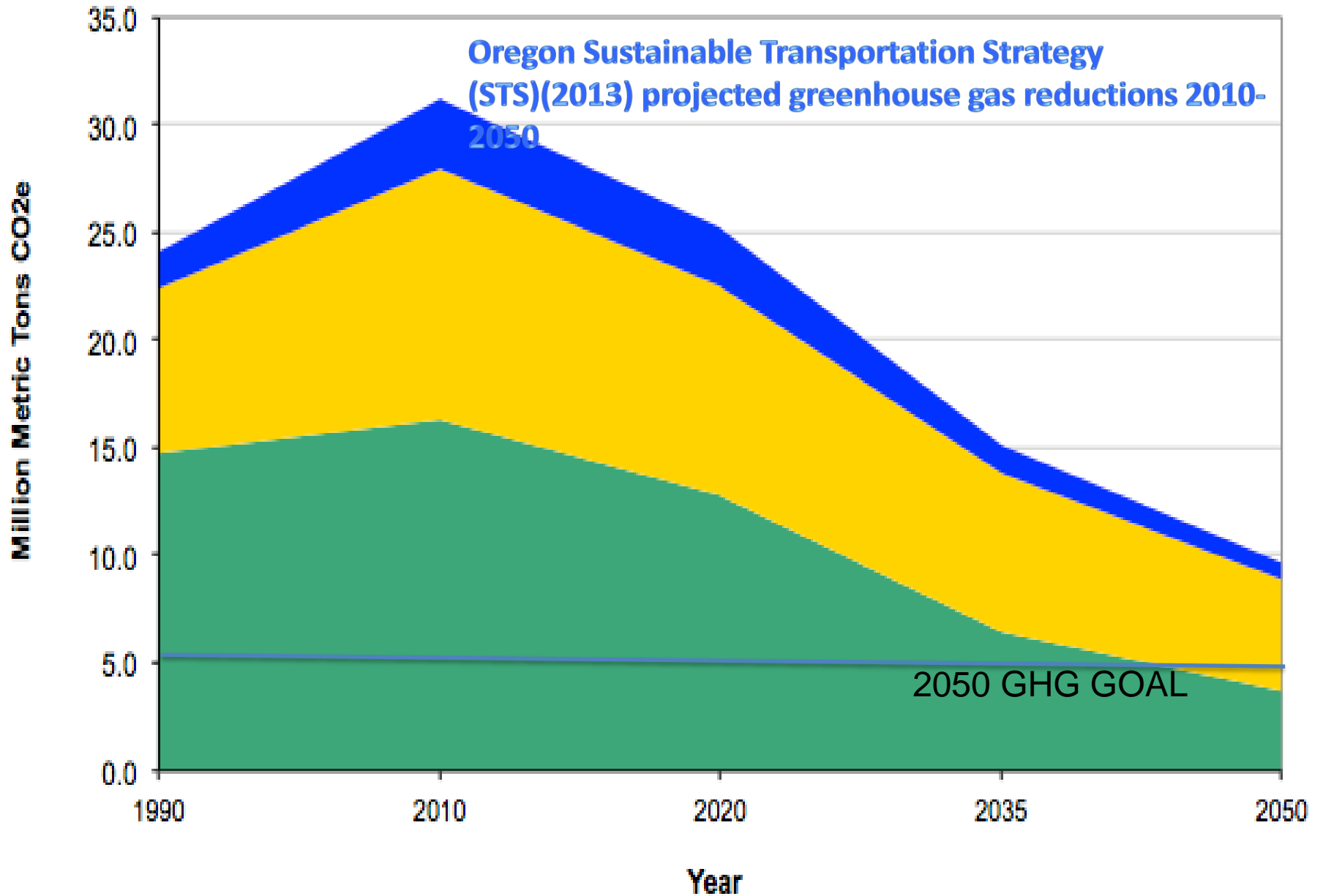
- Electric Vehicles – 2016 v. 2015
 - +30% to 144,000
 - 0.82% market share
- Trucks + SUVs – 2016 v. 2014
 - +26% to 11.1mm
 - 63% market share
(up from 50% in 2014)

3. Clean Transportation Strategies

- ***Lower carbon content in fuels***
(Clean Fuels Standard)
- ***Electric Vehicles*** . . . cost-accessible, and plugged into a *clean electric grid*
- ***Transit*** . . . and unconventional options (Uber/Lyft)
- ***Urban design*** to support transit, local access to services
- (also: urban parking, congestion pricing, bike/ped, ITS strategies; etc.)

Questions

Oregon Sustainable Transportation Strategy (STS)(2013) projected greenhouse gas reductions 2010-2050

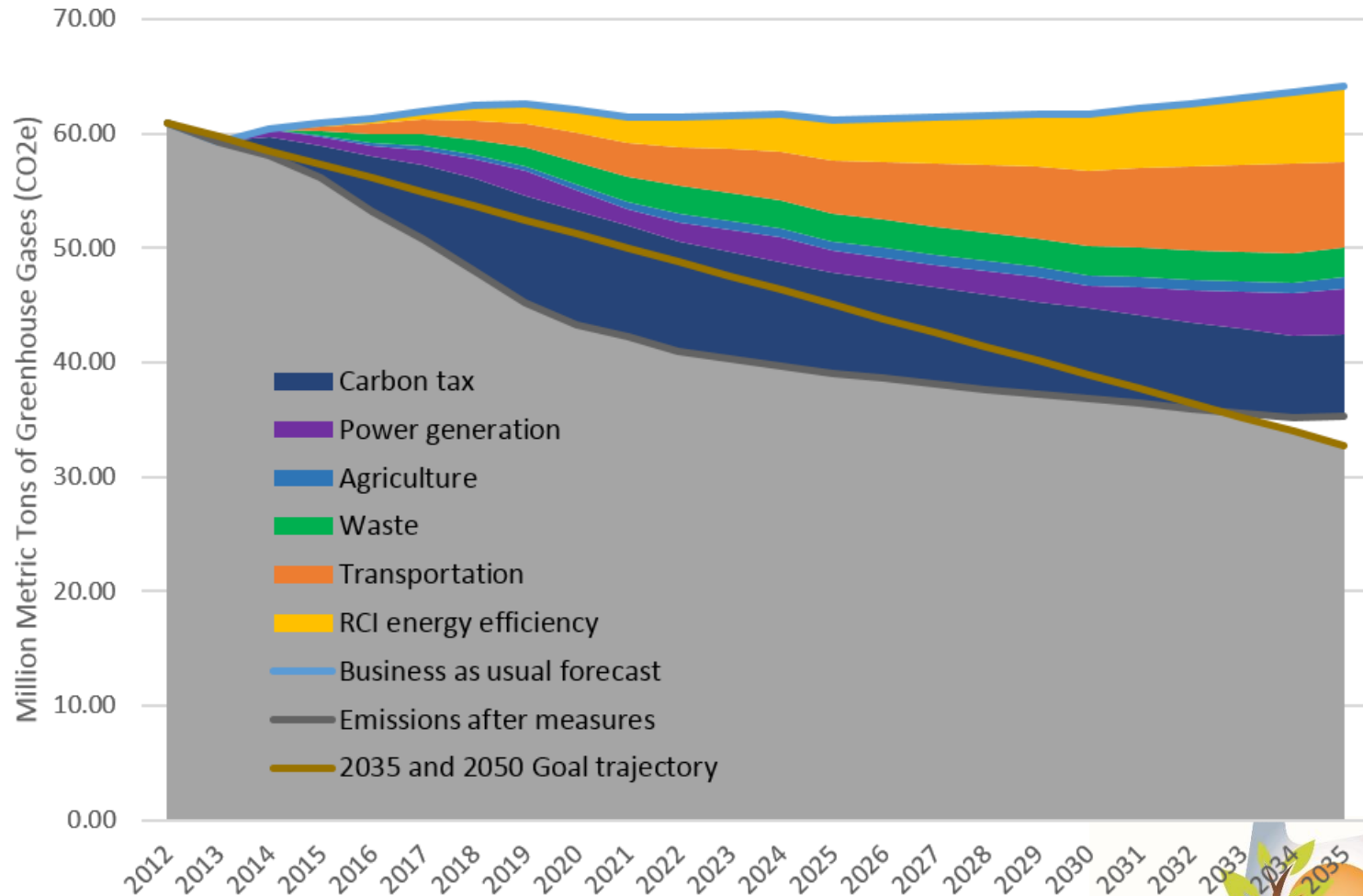


■ Ground Pass. & Comm. Serv.

■ Freight

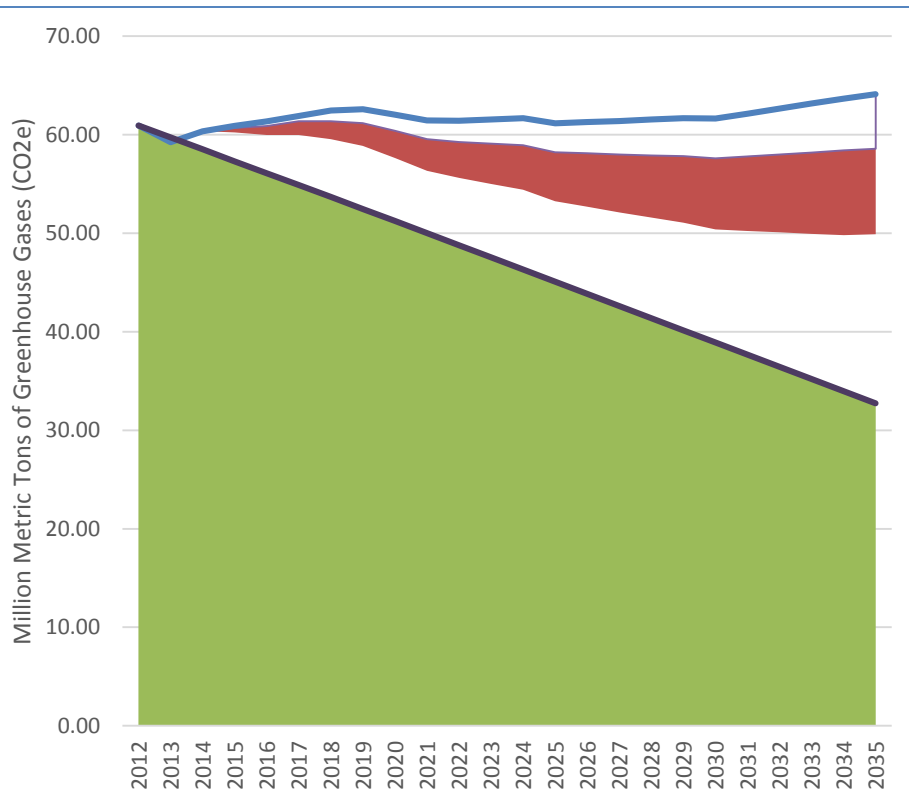
■ Air Passenger

“Wedge” Analysis to Fill the Gap



Transportation (Ground, Freight, Air)

– Measures:



- Grow transit service faster than population, for; accessibility, frequency
- Grow EV + PHEV's from 3.6% of fleet in 2022 to 43% in 2035
- Fleet fuel economy: 10% over EPA's current 2025 rule [54.5mpg]

1. Oregon's Historical GHG Emissions

