

Interior Design Collaborative - Oregon

HB 2153 Testimony

2/8/2017



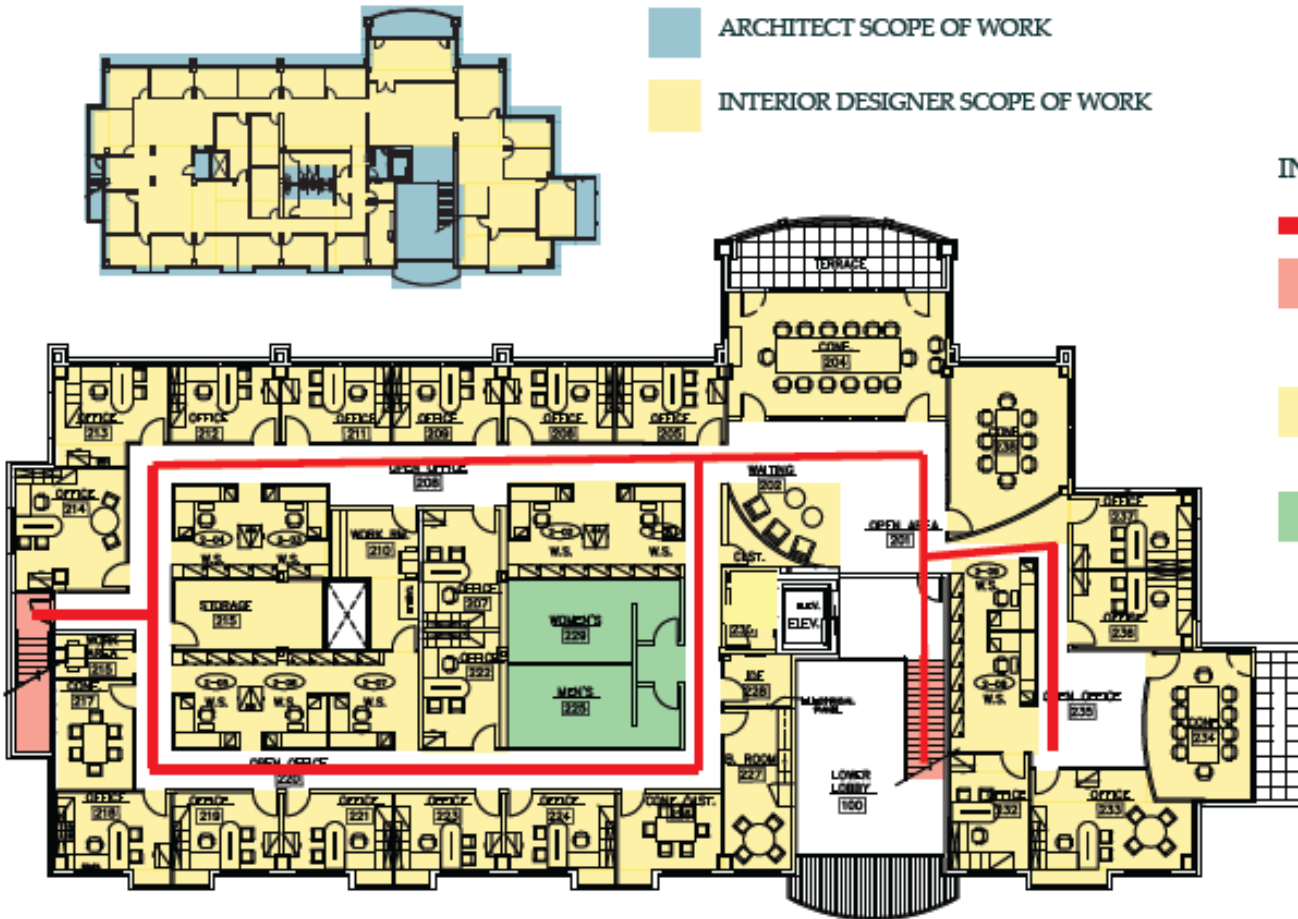
Stakeholders/Supporters



Current Supporters:

1. Architecture & Design Firms
2. Independent Interior Designers
3. Professional Organizations (IIDA/ASID)
4. Industry/Vendors
5. Students and Educators of Interior Design
6. Post-Secondary Schools
7. Green Building Industry
8. Other Professional Allies

Commercial Interior Design Scope



INTERIOR DESIGN SCOPE EXPLAINED

- EGRESS
- EXIT:
 - FINISHES - FIRE CODE COMPLIANT
 - STAIR RAILING DESIGN
 - ADA AND BUILDING CODE COMPLIANCE
- SPACE PLANNING:
 - ROOMS AND WORK STATIONS
 - ADA AND BUILDING CODE COMPLIANCE
- RESTROOMS:
 - FIXTURE COUNTS TO CODE
 - LAYOUT TO ADA COMPLIANCE
 - FINISHES TO CODE AND PROTECT AGAINST SLIPS AND FALLS
- ADDITIONAL WORK THROUGHOUT:
 - FIRE CODE AND ADA COMPLIANT FINISHES
 - LIGHTING PER ENERGY AND FIRE CODE
 - ACOUSTICS AND SECURITY
 - NON TOXIC MATERIAL SPECIFICATIONS

LIFE SAFETY SUMMARY

1. COMMON PATH OF TRAVEL (SECTION 101.13, FOOTNOTES 1) THE LENGTH OF A COMMON PATH OF TRAVEL IN COMMON AREAS 2, 3, AND 5 SHALL NOT BE MORE THAN 150 FEET PROVIDED THE BUILDING IS EQUIPPED THROUGHOUT WITH AN AUTOMATIC SPRINKLER SYSTEM INSTALLED IN ACCORDANCE WITH SECTION 905.5.1.1

COMPLIANCE: MAXIMUM PATH OF EGRESS TRAVEL: 150' 0"

2. TRAVEL DISTANCE LIMITATIONS (SECTION 101.13) EGRESS PATHS SHALL BE SO LOCATED ON EACH STORY FLOOR THAT THE MAXIMUM LENGTH OF EGRESS TRAVEL IS LIMITED FROM THE MOST REMOTE POINT WITHIN A STORY TO THE ENTRANCE TO AN EXIT ACCESSIBLE THROUGH THE NATURAL AND UNOBSTRUCTED PATH OF EGRESS TRAVEL, SHALL NOT EXCEED 300 FEET (SEE TABLE 101.13.1)

COMPLIANCE: MAXIMUM TRAVEL DISTANCE: 270' 0"

3. EXIT OR EXIT ACCESS DOORWAYS (SECTION 101.13.1) TWO EXITS OR EXIT ACCESS DOORWAYS FROM ANY SPACE SHALL BE PROVIDED IF THE OCCUPANT LOAD OF THE SPACE EXCEEDS AS SET FORTH IN TABLE 101.13.1

COMPLIANCE: EXIT DOORS REQUIRED: 2

COMPLIANCE: EXIT DOORS PROVIDED: 2

4. TWO EXITS OR EXIT ACCESS DOORWAYS (SECTION 101.13.1, FOOTNOTES 2) WHERE A BUILDING IS EQUIPPED THROUGHOUT WITH AN AUTOMATIC SPRINKLER SYSTEM IN ACCORDANCE WITH SECTION 905.5.1.1 OR 905.5.1.2, THE SEPARATION DISTANCE OF THE EXITS OR EXIT ACCESS DOORWAYS SHALL NOT BE LESS THAN ONE THIRD OF THE LENGTH OF THE MAXIMUM OVERALL DIMENSION OF THE AREA SERVED.

COMPLIANCE: MINIMUM SEPARATION REQUIRED: 66' 7"

COMPLIANCE: MINIMUM SEPARATION PROVIDED: 81' 5"

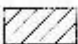
FIRE & LIFE SAFETY PLAN NOTES


MEANS OF EGRESS, INCLUDING EXIT DISCHARGE, SHALL BE ILLUMINATED AT ALL TIMES IF BUILDING SPACE IS SERVED BY THE MEANS OF EGRESS OCCUPIED.


FIRE & LIFE SAFETY PLAN LEGEND

150	300
150	300
150	300

ROOM SUMMARY TAG

 PATH OF EGRESS ILLUMINATION: MEANS OF EGRESS ILLUMINATION SHALL NOT BE LESS THAN 1 FOOT-CANDLE (11 LUX) AT THE FLOOR LEVEL. THE POWER SUPPLY FOR THE MEANS OF EGRESS ILLUMINATION SHALL, NORMALLY, BE PROVIDED BY THE PREMISES ELECTRICAL SUPPLY. IN THE EVENT OF A POWER FAILURE, THE EMERGENCY POWER SYSTEM SHALL PROVIDE ILLUMINATION A MINIMUM OF NOT LESS THAN 90 MINUTES AND SHALL CONSIST OF STORAGE BATTERIES, UNIT EQUIPMENT, OR AN ON-SITE GENERATOR. THE INSTALLATION OF THE EMERGENCY POWER SYSTEM SHALL BE IN ACCORDANCE WITH THE IBC/ASCE SECTION 2102, FEB 2004 DESIGN CRITERION 1006.

 EXIT LIGHT ACCESSIBLE BY BACKUP, DIRECTIONAL ARROW LIGHT WHERE LINE OF SIGHT TO NEAREST EXIT IS OBSCURED

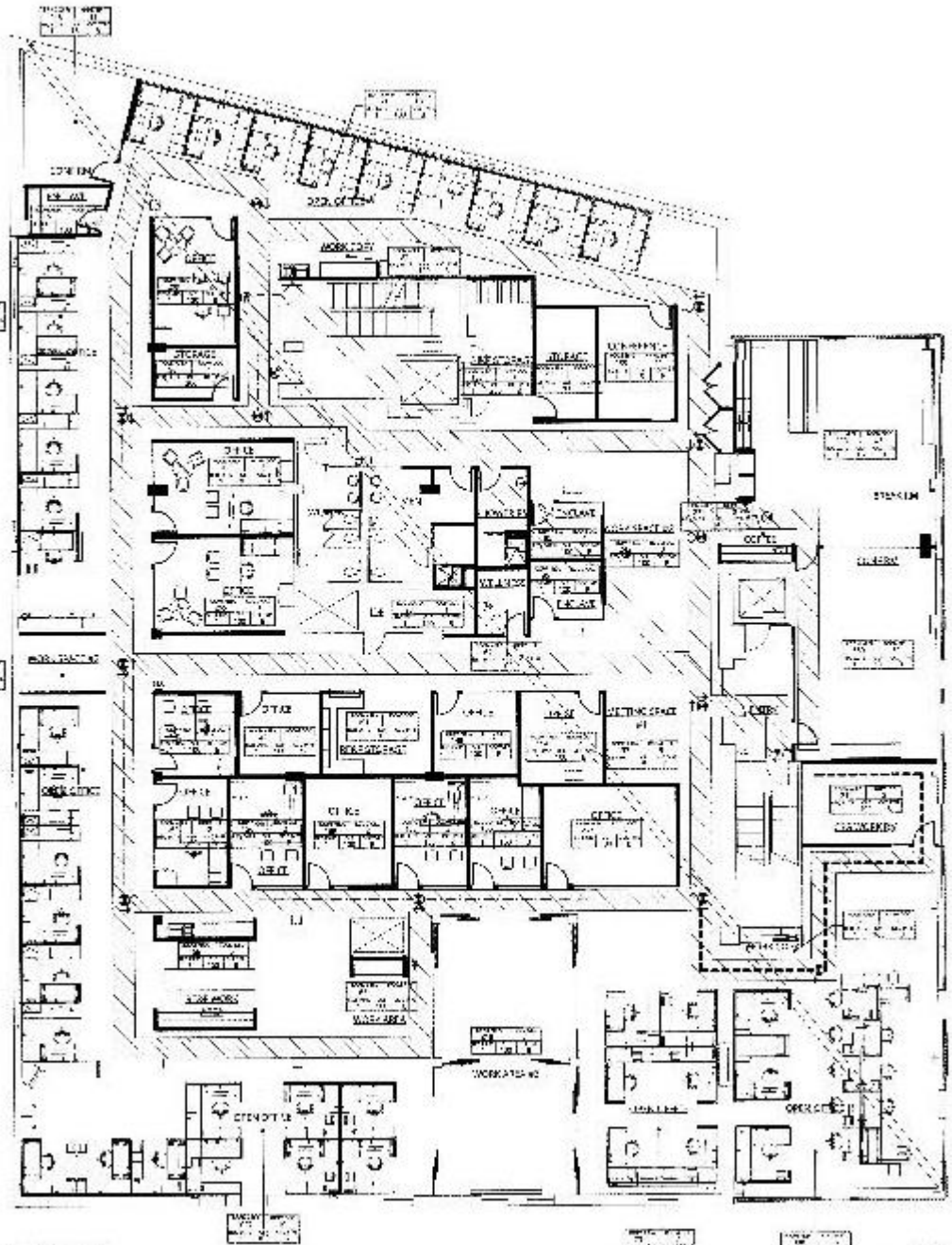
 FIRE EXTINGUISHING CABINET

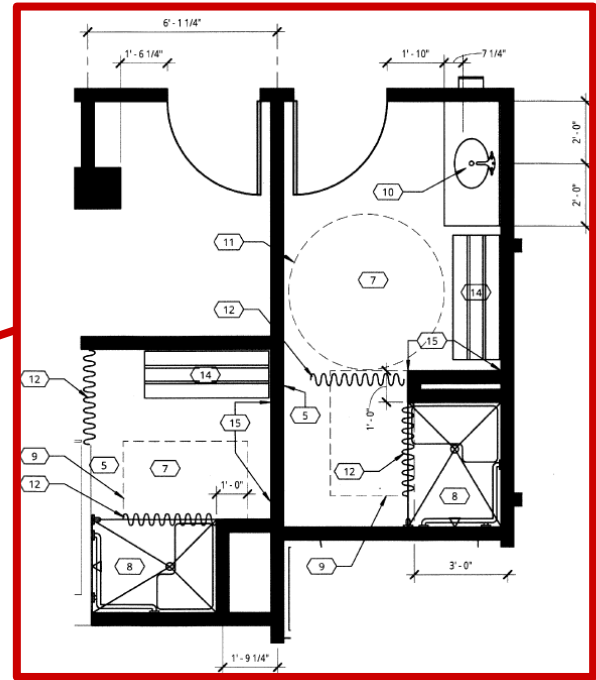
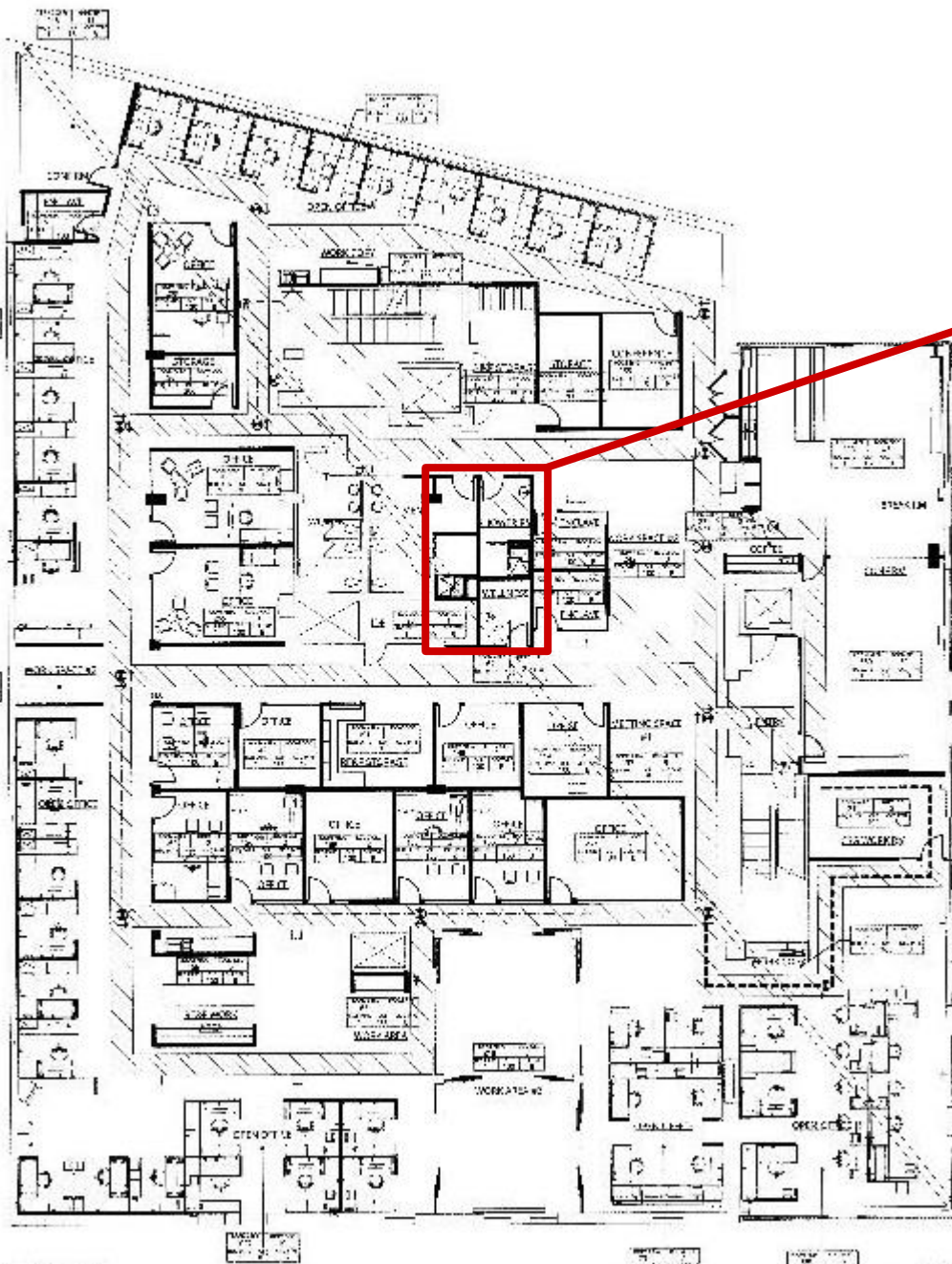
WHITE CHAIR SPACE / WHITE CHAIR PLACED AREA

5' 0" DIAMETER WHEEL CHAIR TURN AROUND AREA

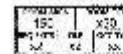
FALLING WALL

NEW TENANT PARTITION WALL, SEE WALL SCHEDULE FOR CONSTRUCTION TYPE





FIRE & LIFE SAFETY PLAN LEGEND



HIDDEN SUMMARY TAG

PATH OF EGRESS ILLUMINATION: MEANS OF EGRESS ILLUMINATION SHALL NOT BE LESS THAN 1 FOOT-CANDLE (11 LUX) AT THE FLOOR LEVEL. THE POWER SUPPLY FOR THE MEANS OF EGRESS ILLUMINATION SHALL, NORMALLY, BE PROVIDED BY THE PREMISES ELECTRICAL SUPPLY. IN THE EVENT OF A POWER FAILURE, THE EMERGENCY POWER SYSTEM SHALL PROVIDE ILLUMINATION A MINIMUM OF NOT LESS THAN 30 MINUTES AND SHALL CONSIST OF STORAGE BATTERIES, BATTERY CHARGER, OR AN ON-SITE GENERATOR. THE INSTALLATION OF THE EMERGENCY POWER SYSTEM SHALL BE IN ACCORDANCE WITH THE D.S.S.C. SECTION 2102, FEB 2014 D.S.S.C. SECTION 1606.



DIR

EXIT LIGHT AND BATTERY BACKUP, DIRECTIONAL ARROW LIGHTS WHERE LINE OF SIGHT TO NEAREST EXIT IS OBSCURED

FIRE EXTINGUISHER CABINET



WHITE CHAIR SPACE / WHITE CLEAR DECK AREA

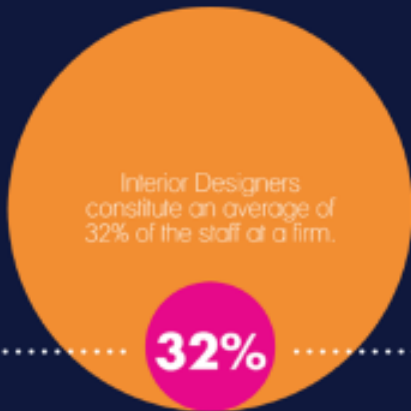
5'-0" DIAMETER WHEEL CHAIR TURN AROUND AREA



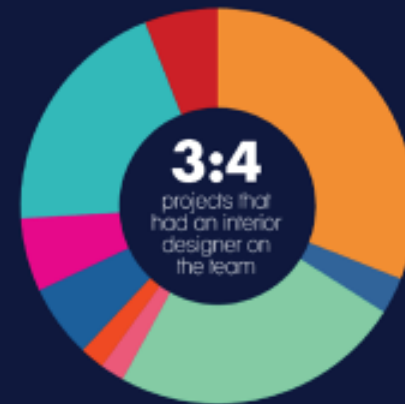
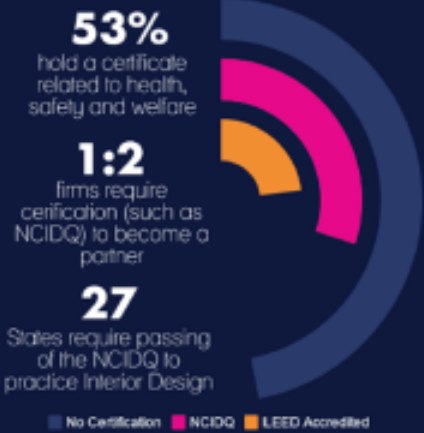
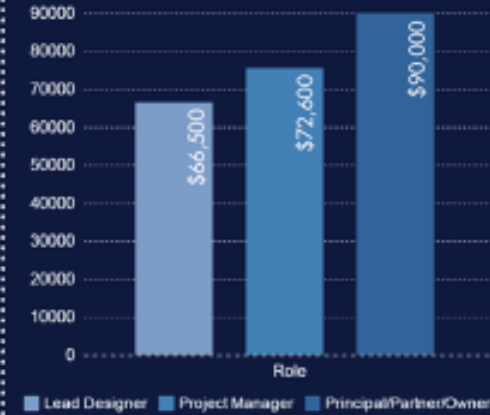
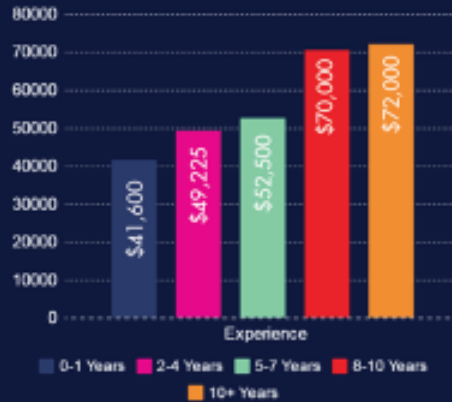
FRUITING WALL

NEW TENANT PARTITION WALL, SEE WALL SCHEDULE FOR CONSTRUCTION TYPE.

Oregon's Interior Design Profession



Architects Interior Designers



Project Types Completed in Oregon



Oregon Interior Design Sector*

Every **1** job can support **0.75** additional jobs in the state

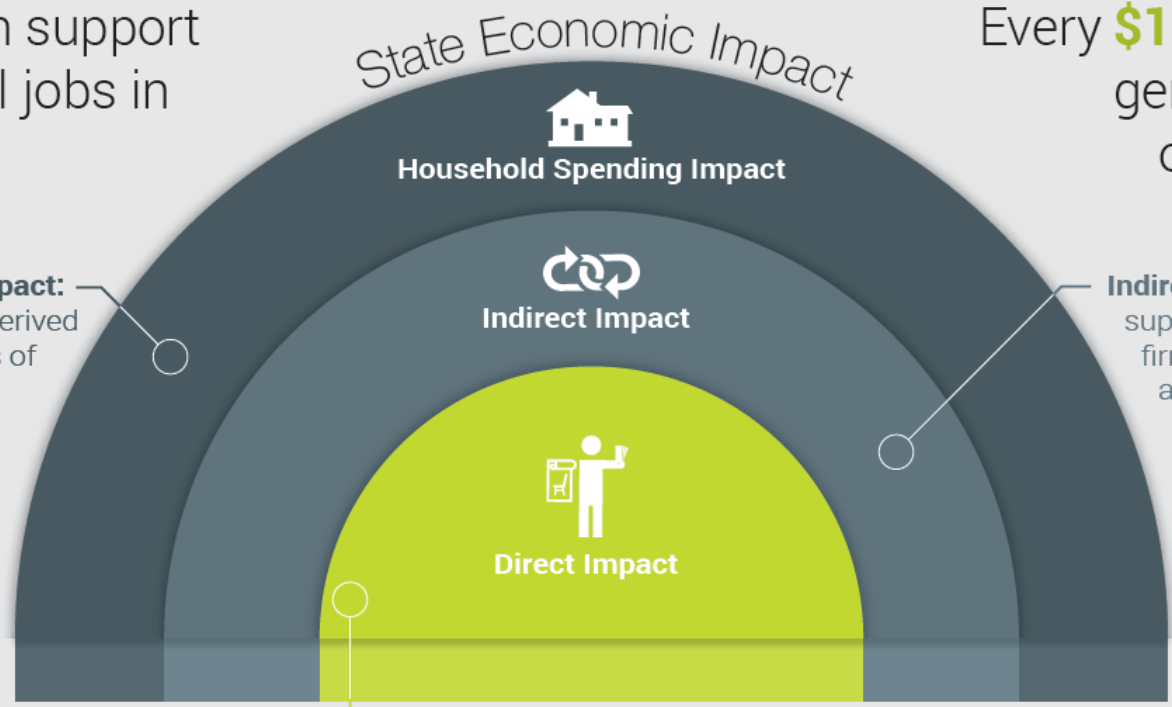
Every **\$1** in revenue can generate **\$0.45** in other industries

Household spending impact: Benefits to businesses derived from wages and salaries of interior design workers.

\$151.2m
revenue
1,407
jobs

Indirect impact: Benefits to suppliers of interior design firms such as engineering and printing services.

\$133.1m
revenue
933
jobs



Direct impact: Total revenues and the number of employees on the payrolls of the interior design sector.

\$630.2m
revenue of firms

3,107
jobs



1,304

Interior design
occupations
in other
industries

1,803

Interior design
industry
employment

Federal and State
Fiscal Impact

US OR



Corporate Income Taxes



Individual Income Taxes



Payroll Taxes

Total impact of tax revenues
from interior design sector:

\$57.1m **\$19.1m**

SECTION 107 SUBMITTAL DOCUMENTS

107.1 General. Submittal documents consisting of *construction documents*, statement of *special inspections*, geotechnical report and other data shall be submitted in two or more sets with each *permit* application. The *construction documents* shall be prepared by a *registered design professional* where required by the statutes of the jurisdiction in which the project is to be constructed. Where special conditions exist, the *building official* is authorized to require additional *construction documents* to be prepared by a *registered design professional*.



Section 107.1 of the 2014 OSSC states “The *construction documents* shall be prepared by a *registered design professional*...”

Commercial Interior Design Regulation



Top 4 reasons:

1. Opportunity: Removes Barriers to Practice
2. Economic Growth: Small & Women Owned Businesses
3. Accountability: Consumer Choice & Protection
4. Sustainable Future: Healthy spaces for all Oregonians

1. Opportunity: Removes Barriers to Practice



Daimler Trucks North America Corporate Headquarters, Ankrom Moisan Architects

2. Economic Growth: Small & Women Owned Businesses



02/03/2014

Plaza del Toro, EMC Interior Design, llc

3. Accountability: Consumer Choice & Protection



Rowlock Apartments, Garrison Hullinger Interior Design

4. Sustainable Future: Healthy spaces for all Oregonians



Oregon State University Learning Innovation Center, Bora Architects

Legislation in Oregon – HB2153



HB 2153:

1. WILL NOT require any state oversight of the work designers do.
2. WILL NOT allow designers to supervise construction, just the preparation of construction documents & specifications.
3. WILL remove the current barrier that prevents designers from working on large projects.
4. WILL hold registered designers to the highest standards of the profession.





Questions



Why does Interior Design Matter?



<http://www.idec.org/videocompetition/>

Thank you



Contact:

Alicia Snyder-Carlson
IDC-Oregon Co-chair
co-chair@idc-oregon.org

info@idc-oregon.org

For more information:
advocacy.iida.org

