

Port of Portland and Trade

Keith Leavitt, Chief Commercial Officer
Port of Portland

House Committee on Economic Development & Trade
February 6, 2017

Columbia River

Willamette River

Oregon Trade Dependent State

- Oregon is the 12th most trade dependent state in the nation
- 80% of Oregon exports are goods: 20% are services
- In 2015, Oregon businesses exported \$20 billion in goods.
- Imports to Oregon totaled \$14.8 billion.
- Over 500,000 Oregon jobs were connected to trade.



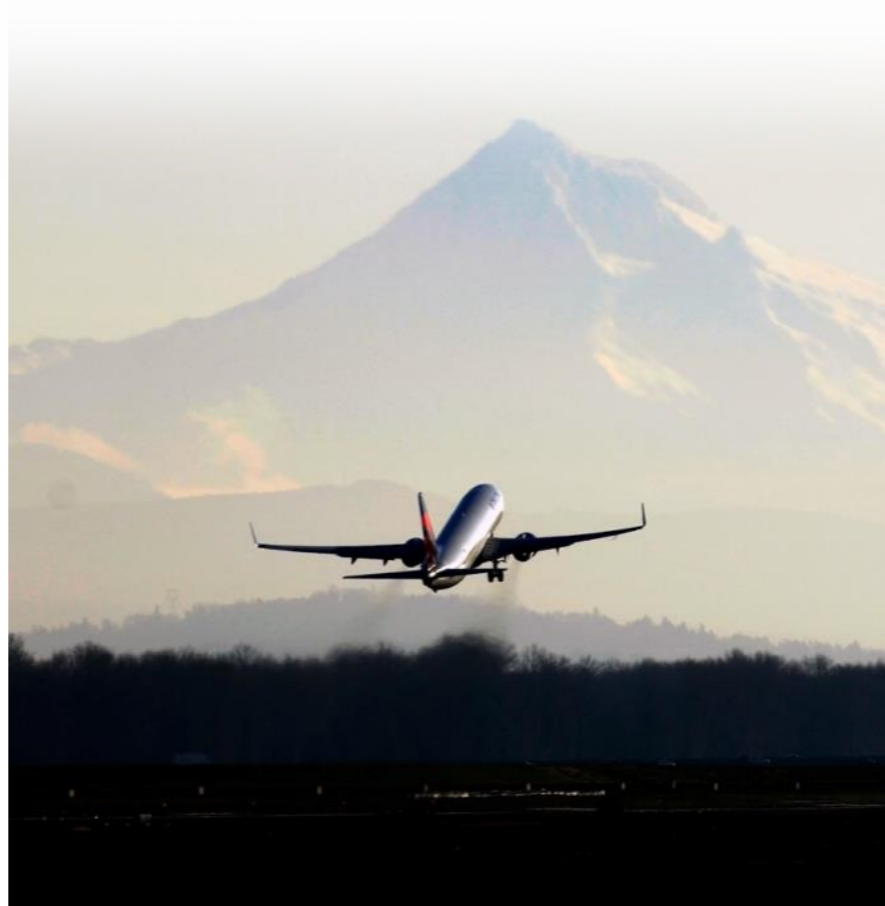
Port of Portland

“The mission of the Port of Portland is to enhance the region’s economy and quality of life by providing efficient cargo and air passenger access to national and global markets, and by promoting industrial development.”

4 Marine Terminals



3 Airports



5 Business Parks



PDX International Passenger Service

- Non-stop international destinations: Tokyo, Amsterdam, Reykjavík, Frankfurt, Vancouver, B.C., Calgary, Toronto, Guadalajara, Puerto Vallarta, Los Cabos
- Seasonal service to London starting summer 2017

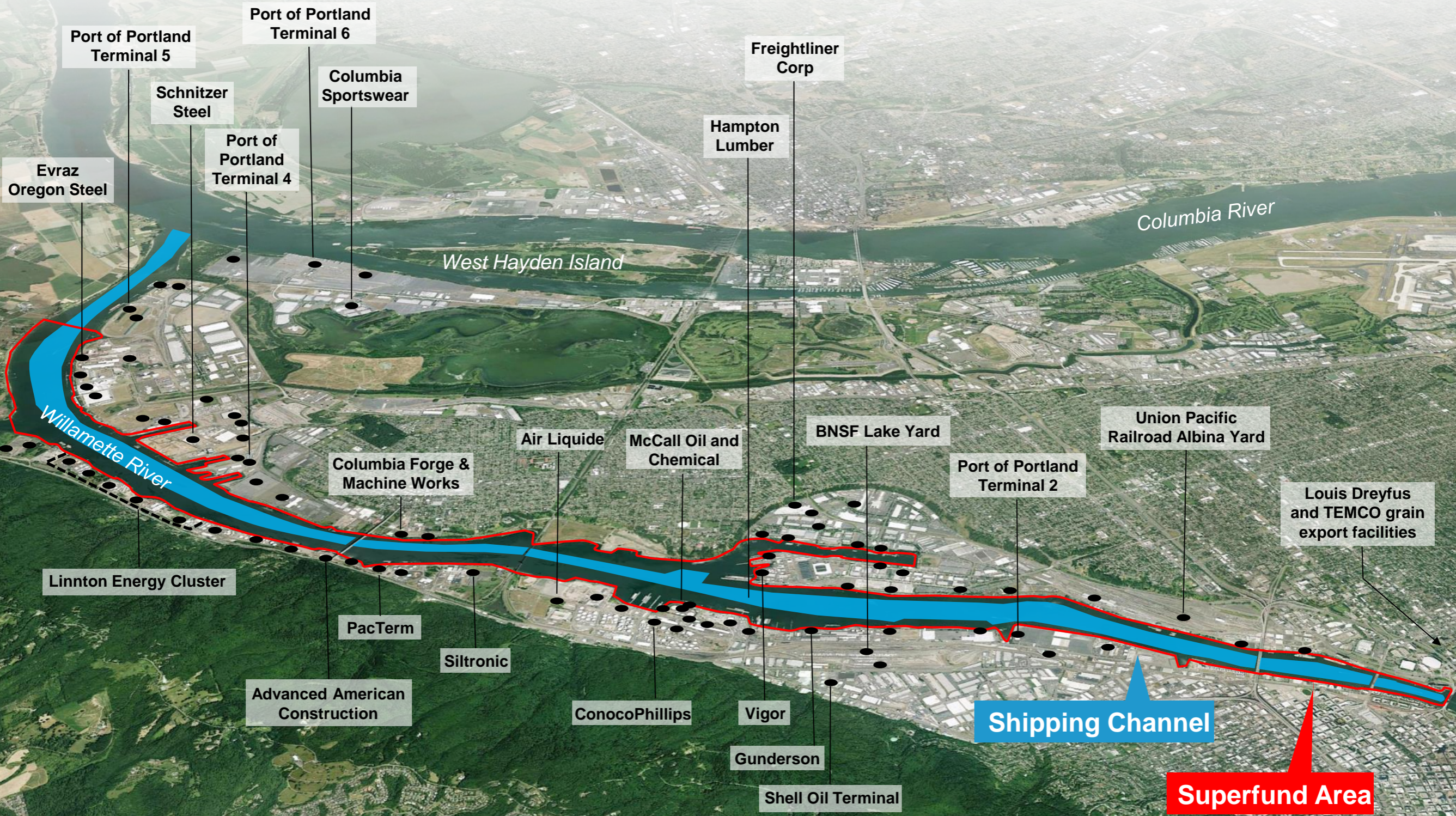


PDX Air Cargo Service

- Cathay Pacific launched in November 3, 2016
- Twice weekly direct freighter service to Hong Kong hub and beyond
- Supporting movement of Oregon products



Portland's Working Waterfront

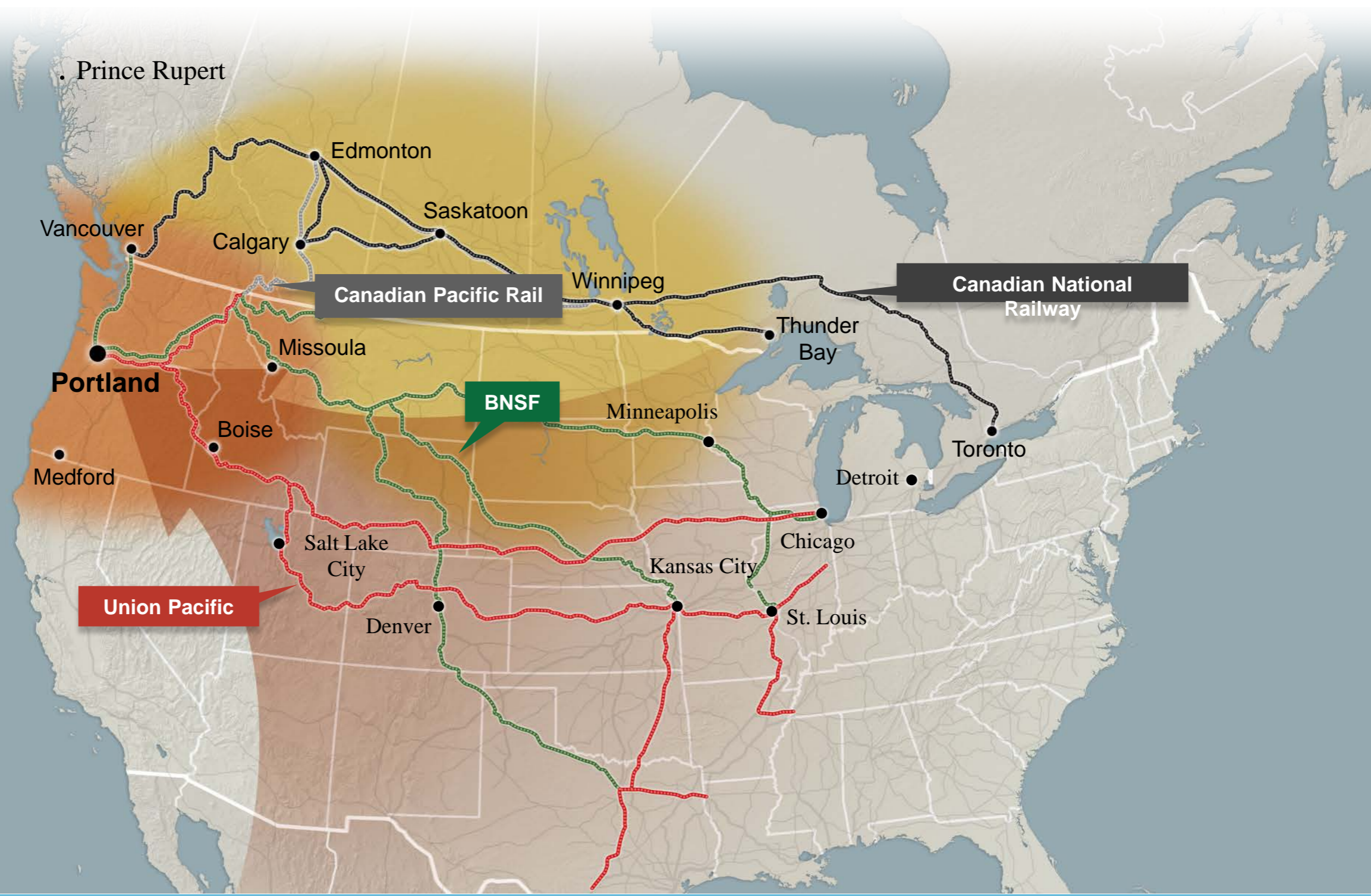


Transportation Advantage

Roads, Rivers, Rail and Runways



North America Import and Export Gateway



Port Marine Terminals

- 4 marine terminals
- Diverse cargo: Bulk, autos, mineral bulk, break-bulk, containers
- More than 10.2 million tons of waterborne cargo in 2016
- Significant new Portland Harbor and Columbia River investments



Terminal 6 Update

- Niche container port – multi-state region (OR, ID, WA)
- Terminal operator 25-year lease to ICTSI in 2011
- Loss of container services in 2015/16 (Hanjin, Hapag-Lloyd, Westwood)
- Ongoing labor/ management issues and litigation
- Disruptions of global container market
- Working with ICTSI to ensure Terminal 6 ready for operation
- Continuing engagement with targeted transpacific carriers



Portland's Containerized Cargo (2014)

Top Exports

- Hay/animal feed
- Logs, softwood, hardwood
- Agricultural & reefer cargo
- Paper, paperboard, MCS, newsprint, waste paper
- Scrap metal



Top Imports

- Furniture
- Tires
- Footwear/apparel
- Wood products
- Glass articles



Port Industrial Land

- Port is the largest owner of industrial land in the Oregon
- Significant generator of traded-sector economic development
- Adequate supply of large, market-ready industrial property is a competitive requirement for traded-sector investments
- Site readiness is not occurring at a pace to keep up with growing demand
- Remaining industrial parcels within region have significant hurdles to development and require public support to move to market
- Brownfield redevelopment, including Portland Harbor, requires special focus within the Portland Metro Urban Growth Boundary



Industrial Properties Land

Total Acres – 4,382 Acres
Availability – 639.8 Acres

Rivergate

- 2,780 Total Acres
- 1,874 Acres sold and leased
- 60.3 Acres available



Swan Island

- 430 Total Acres
- 5.5 Acres available



Troutdale Reynolds Industrial Park

- 350 Total Acres
- 14 Acres available in Ph. 1
- 219 Acres in Ph. 2 and Ph. 3



Portland International Center

- 458 Total Acres
- 20 Acres available



Hillsboro Properties

- 142 Total Acres available

Gresham Vista Business Park

- 221 Total Acres
- 179 Acres available

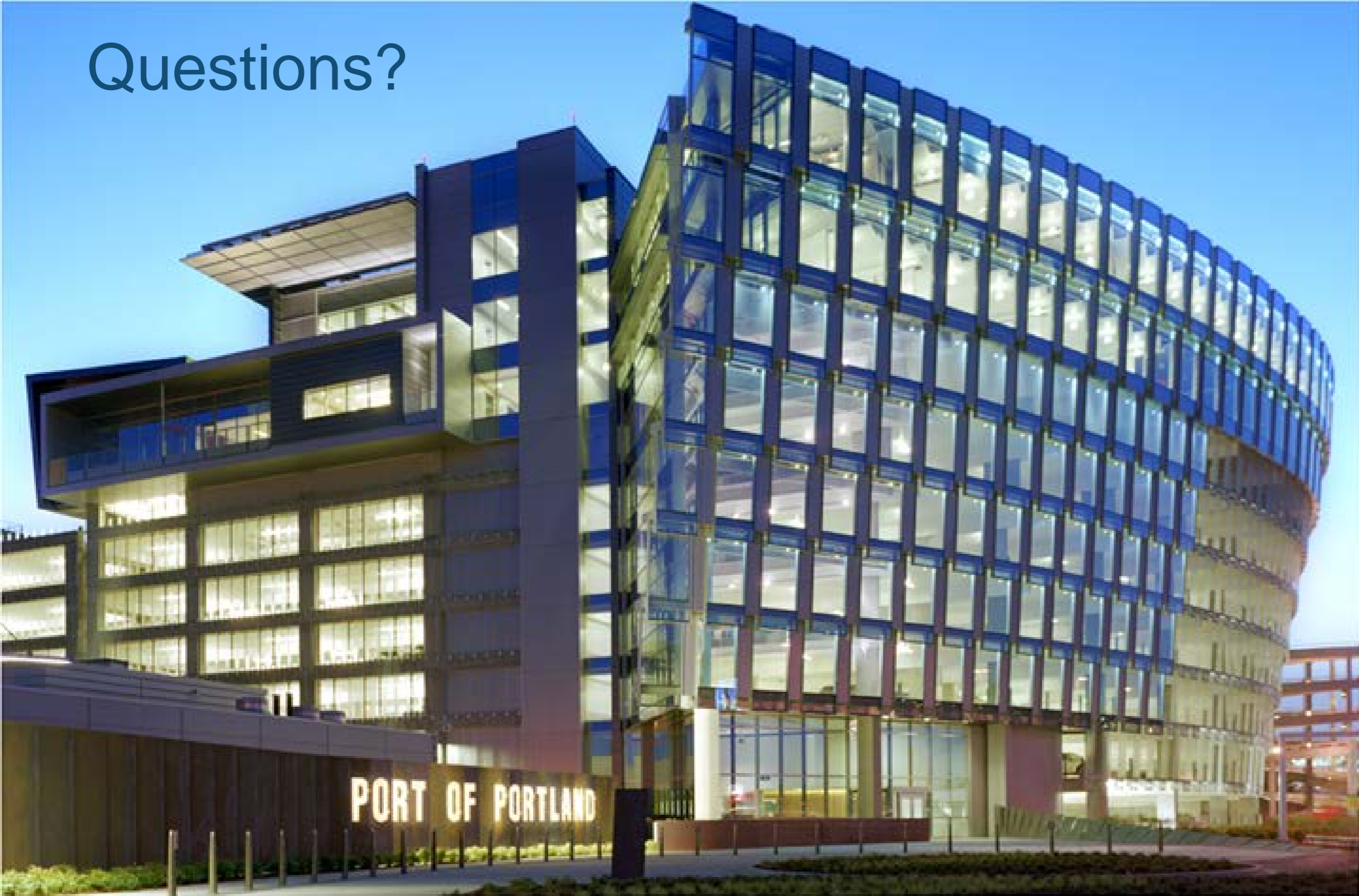


Look Ahead: Major Issues

- Retain/expand international air service
- Terminal 6 container service recovery
- Where/how to grow marine and industrial business
 - Superfund clean-up
 - Industrial/Brownfield redevelopment
 - Funding constraints



Questions?



Port Shipper Support

- Rivergate Depot Expansion to support Westwood service
- Upriver Container Barge/Rail Shuttle
- Container Reuse Pilot in Valley
- General Logistics Assistance for Shippers
- Cathay Pacific Air Cargo Service

