



Oregon State Police

Judiciary Committee

Presented by: Travis Hampton, Superintendent

Oregon State Police

Mission, Vision, and Values

Vision

To provide premier public safety services

Mission

Founded in 1931, the mission of the Oregon State Police is to serve the State of Oregon with a diverse workforce dedicated to the protection of people, property and natural resources

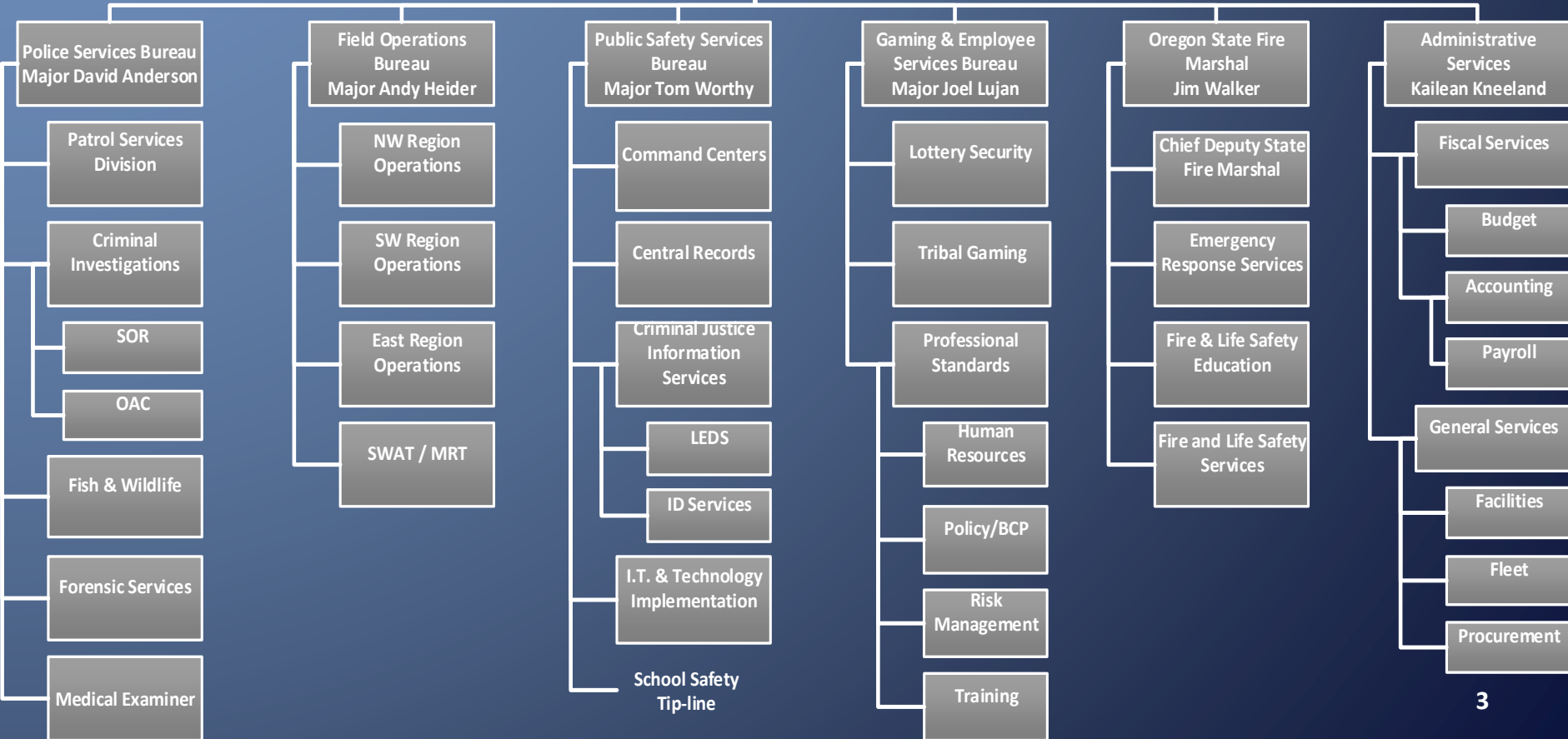
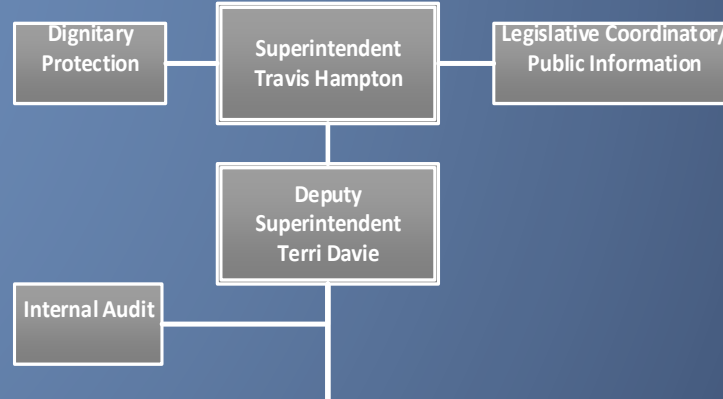
Values

Honor, Loyalty, Dedication, Compassion, and Integrity



"To Provide Premier Public Safety Services"

Oregon State Police



Oregon State Police Services Diagram

Police Services

- Patrol – Field Operations
- Criminal – Field Operations
- Fish and Wildlife

Agency Support

- Dispatch Centers
- Fleet
- Professional Standards
- Risk Management
- Stockroom
- Central Records
- Internal Audit
- Superintendent's Office
- Sworn Recruitment/
Training

Administrative Services

- Accounting
- Budget
- Payroll
- Human Resources
- Procurement
- Information
Technology

Public Safety Support & Sole Source Services

Patrol Division

- Drug Recognition Evaluation Program
- *Mobile Response Team
- *SWAT

Criminal Division

- Missing Children & Adult Clearinghouse
- Oregon State Athletic Commission
- Sex Offender Registration
- Judicial Background Investigations
- *Polygraph Examinations

Criminal Justice Information Systems Division

- Background Checks
- Firearms Instant Check System
- ID Services
- Law Enforcement Data Systems

Oregon Office of State Fire Marshal

- Emergency Response Services
- Fire & Life Safety Education
- Fire & Life Safety Services

Other Services

- Forensics
- Oregon State Medical Examiner
- Lottery Security
- Tribal Gaming
- School Safety Tip-Line

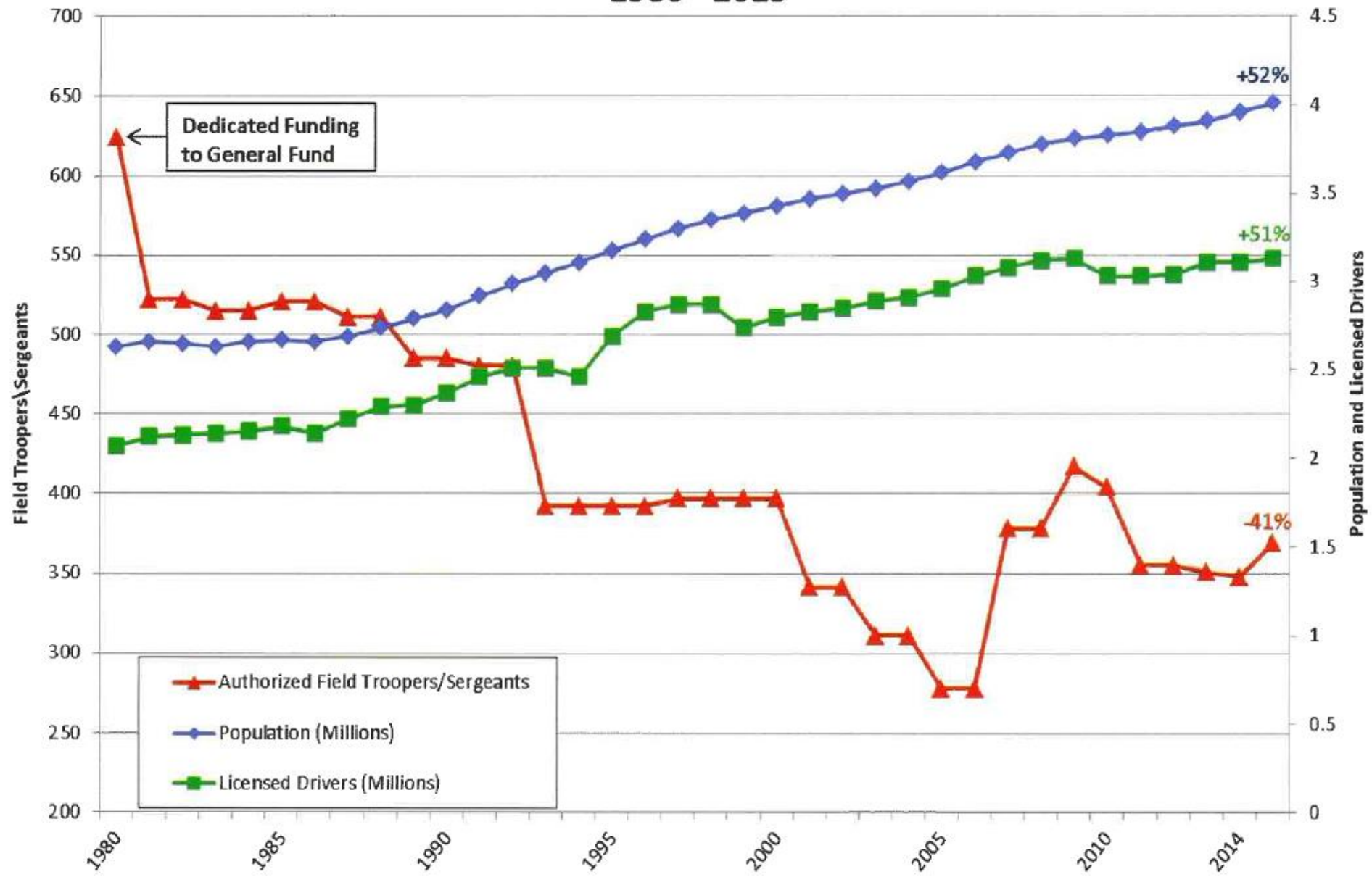
Law Enforcement Hot Topics

- Staffing
- Equipment
- Racial profiling / Use of force statistics
- Budget



"To Provide Premier Public Safety Services"

OSP Patrol Authorized Trooper and Sergeants Strength vs. Oregon Population and Licensed Drivers 1980 - 2015



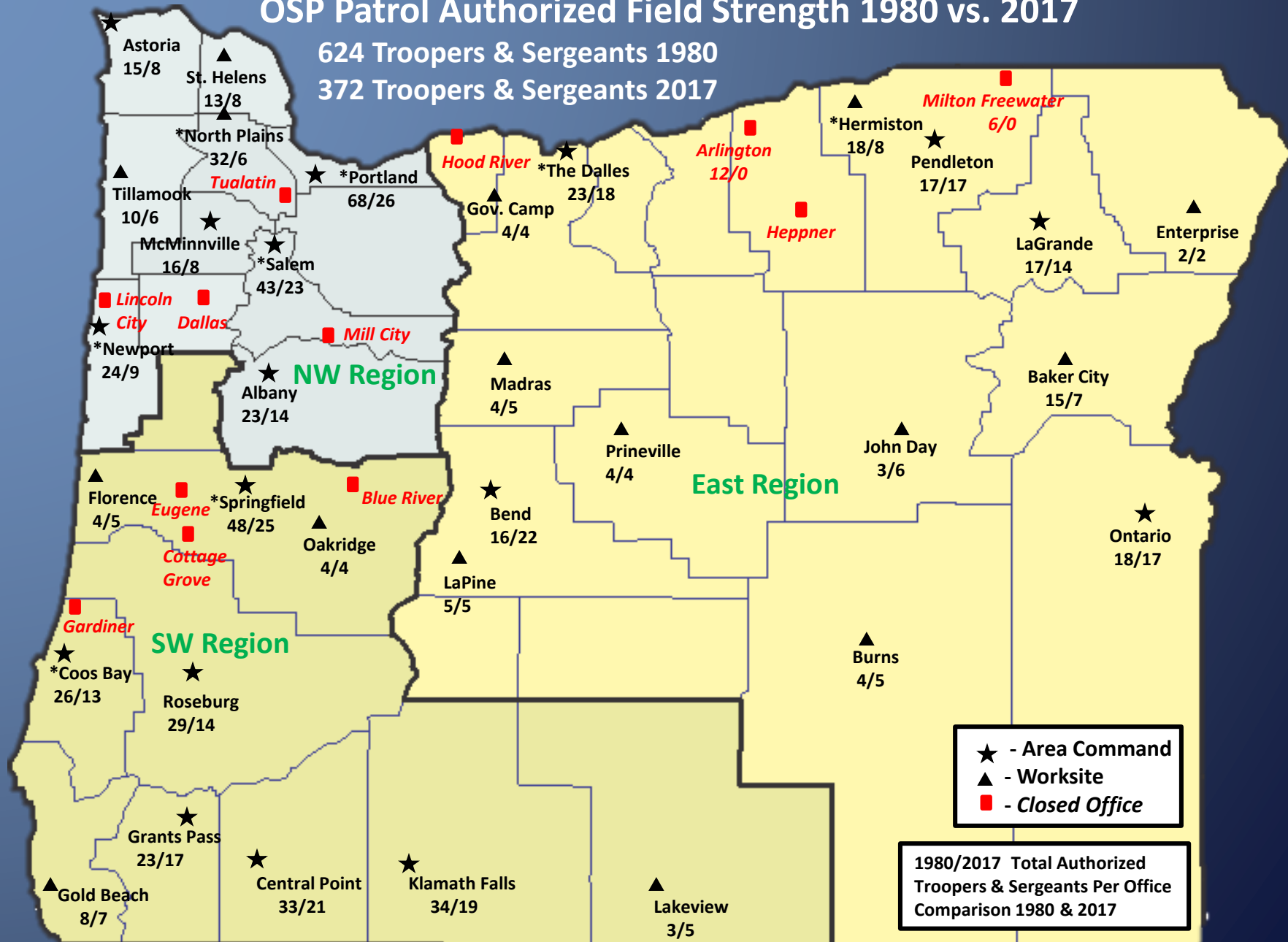
**PATROL TROOPERS PER 1000 POPULATION NATIONAL AVERAGE
2015 POPULATION TOTALS / 2016 PATROL TROOPER TOTALS**

STATE	2015 Population	Population in Thousands	2016 Patrol Field Troopers Authorized Strength	Troopers Per 1000 Population
Vermont	626,088	626.09	327	0.5223
Louisiana	4,668,960	4668.96	1,684	0.3607
Delaware	944,076	944.08	329	0.3485
Connecticut	3,584,730	3584.73	1,248	0.3481
Wyoming	586,555	586.56	198	0.3376
New Jersey	8,935,421	8935.42	2,678	0.2997
Rhode Island	1,055,607	1055.61	280	0.2652
New Mexico	2,080,328	2080.33	543	0.2610
Nebraska	1,893,765	1893.77	484	0.2556
Kentucky	4,424,611	4424.61	1,070	0.2418
New Hampshire	1,330,111	1330.11	319	0.2398
Massachusetts	6,784,240	6784.24	1,590	0.2344
West Virginia	1,841,053	1841.05	405	0.2200
Missouri	6,076,204	6076.20	1,312	0.2159
Oklahoma	3,907,414	3907.41	820	0.2099
Alaska	737,709	737.71	144	0.1952
Pennsylvania	12,791,904	12791.90	2,449	0.1914
Montana	1,032,073	1032.07	182	0.1763
South Carolina	4,894,834	4894.83	860	0.1757
North Dakota	756,835	756.84	131	0.1731
Illinois	12,839,047	12839.05	2,200	0.1714
South Dakota	857,919	857.92	143	0.1667
Michigan	9,917,715	9917.72	1,600	0.1613
New York	19,747,183	19747.18	3,074	0.1557
California	38,993,940	38993.94	6,019	0.1544
Kansas	2,906,721	2906.72	408	0.1404
North Carolina	10,035,186	10035.19	1,398	0.1393
Colorado	5,448,819	5448.82	752	0.1380
Arkansas	2,977,853	2977.85	408	0.1370
Nevada	2,883,758	2883.76	387	0.1342
Virginia	8,367,587	8367.59	1,111	0.1328
Alabama	4,853,875	4853.88	618	0.1273
Ohio	11,605,090	11605.09	1,429	0.1231
Maine	1,329,453	1329.45	146	0.1098
Maryland	5,994,983	5994.98	627	0.1046
Utah	2,990,632	2990.63	311	0.1040
Washington	7,160,290	7160.29	722	0.1008
Iowa	3,121,997	3122.00	309	0.0990
Arizona	6,817,565	6817.57	665	0.0975
Tennessee	6,595,056	6595.06	620	0.0940
Georgia	10,199,398	10199.40	953	0.0934
Minnesota	5,482,435	5482.44	511	0.0932
Texas	27,429,639	27429.64	2,515	0.0917
Mississippi	2,989,390	2989.39	265	0.0886
Idaho	1,652,828	1652.83	146	0.0883
Indiana	6,612,768	6612.77	581	0.0879
Wisconsin	5,767,891	5767.89	489	0.0848
Oregon	4,024,634	4024.63	330	0.0820
Florida	20,244,914	20244.91	1,574	0.0777

Population figures based on 2015 US Census Bureau Statistics
2016 Trooper Data Survey By Patrol Division Staff

OSP Patrol Authorized Field Strength 1980 vs. 2017

624 Troopers & Sergeants 1980
372 Troopers & Sergeants 2017



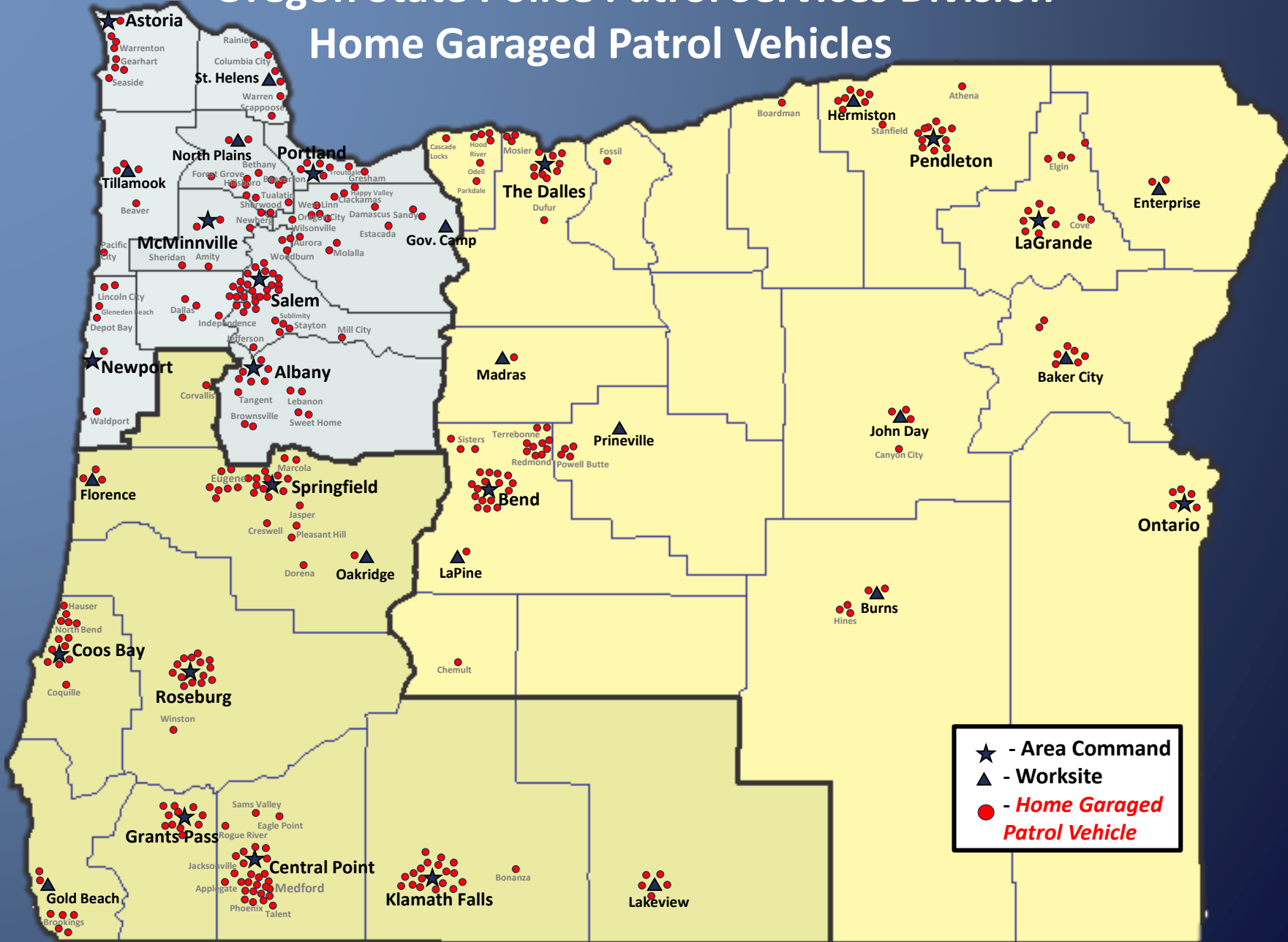
★ - Area Command
▲ - Worksite
■ - Closed Office

1980/2017 Total Authorized Troopers & Sergeants Per Office Comparison 1980 & 2017

*NEWPORT-Formerly Included Lincoln City; NORTH PLAINS-Formerly Beaverton; THE DALLES-Formerly Included Hood River; SALEM-Formerly Included Dallas & Mill City; SPRINGFIELD-Formerly Included Eugene, Cottage Grove & Blue River; COOS BAY-Formerly Included Gardiner; HERMISTON-Formerly Included Heppner; PORTLAND-Formerly Included Tualatin

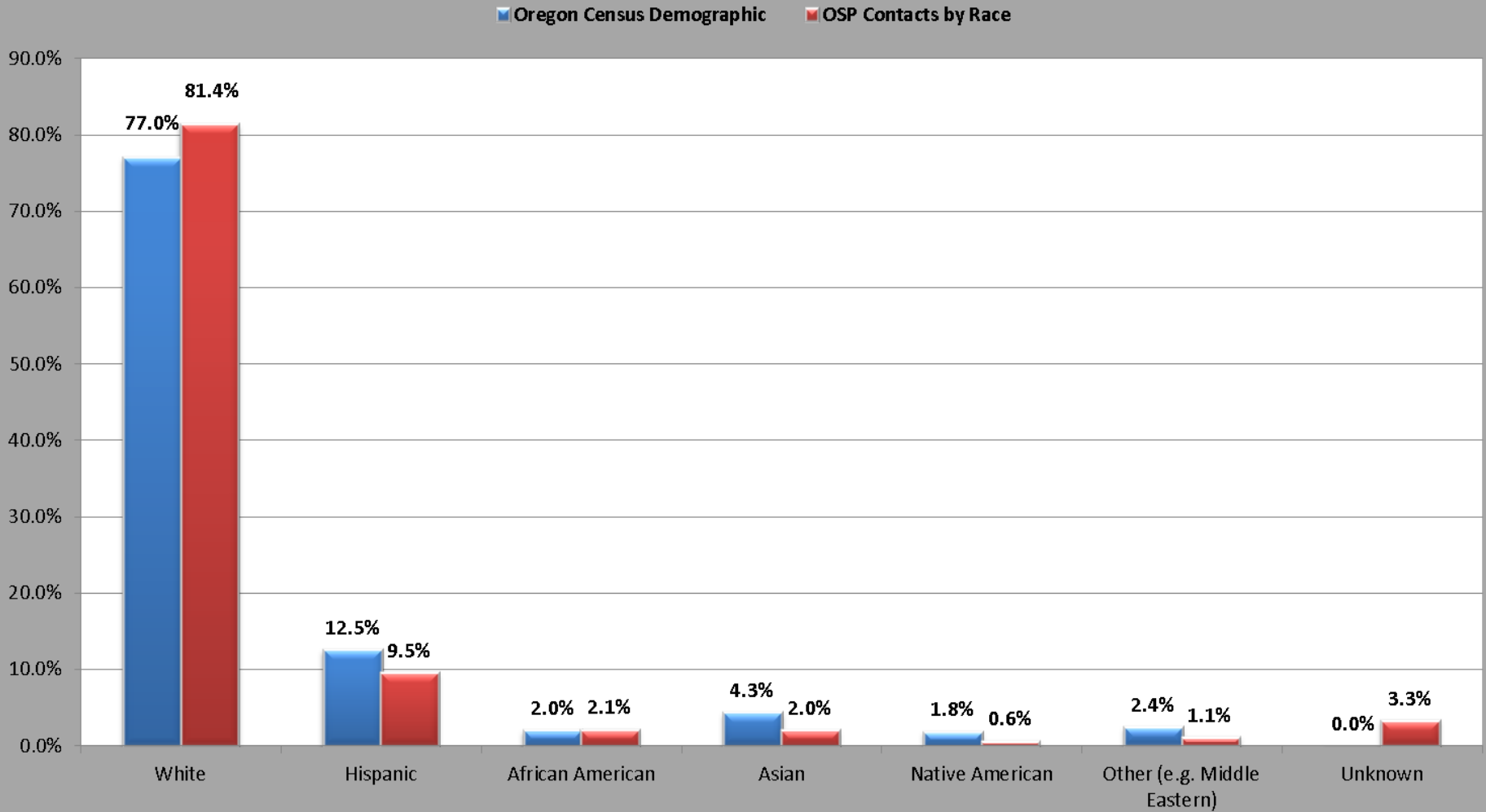
Oregon State Police Patrol Services Division

Home Garaged Patrol Vehicles



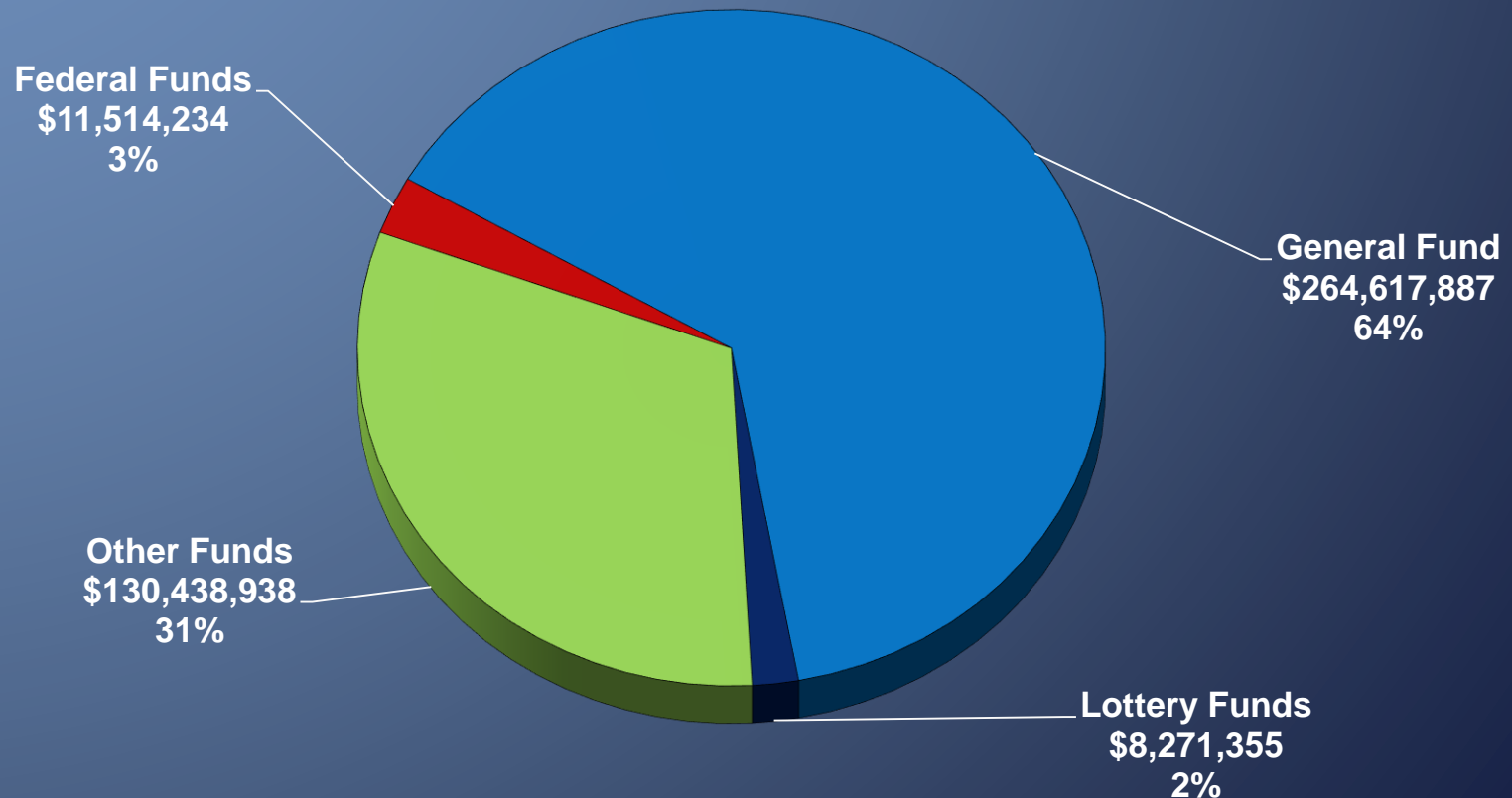
OSP Contact Demographics - 2016

Oregon Census Demographics vs. OSP Contacts



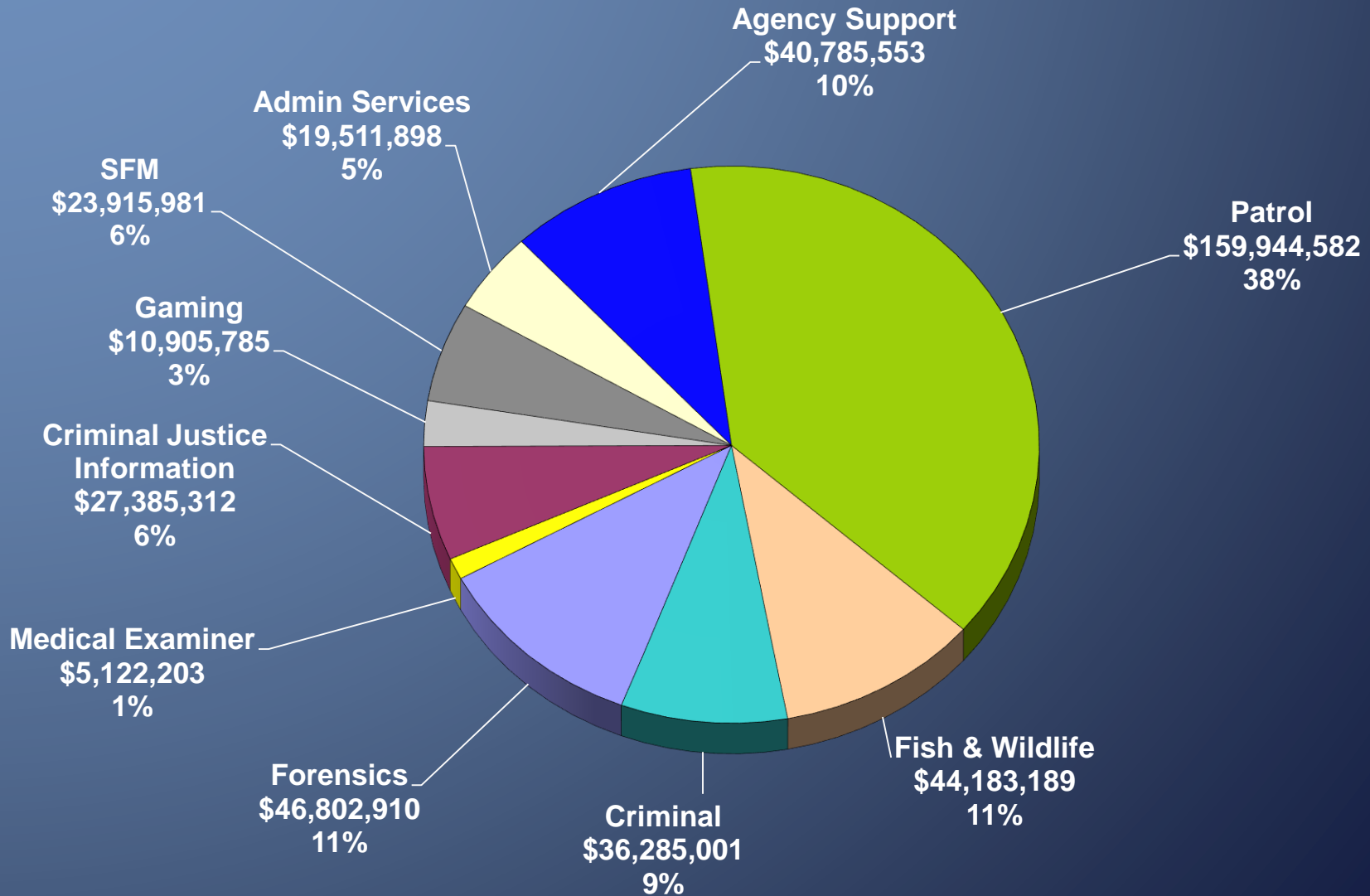
2017-19 Governor's Budget

\$414,842,414 All Funds – By Fund Type



2017-19 Governor's Budget

\$414,842,414 All Funds – By Division



Proposed Policy Option Packages

Division	Package #
Criminal Justice Information Services	100 – CRIMEvue (LEDS 20/20)
Forensics	108 – SAFE Kits



“To Provide Premier Public Safety Services”

Proposed Legislative Concepts

Division	Bill #
Patrol	HB 2323
Fish and Wildlife	HB 2324
Criminal Investigations	SB 76 SB 77 SB 78
State Medical Examiner	HB 2322



“To Provide Premier Public Safety Services”