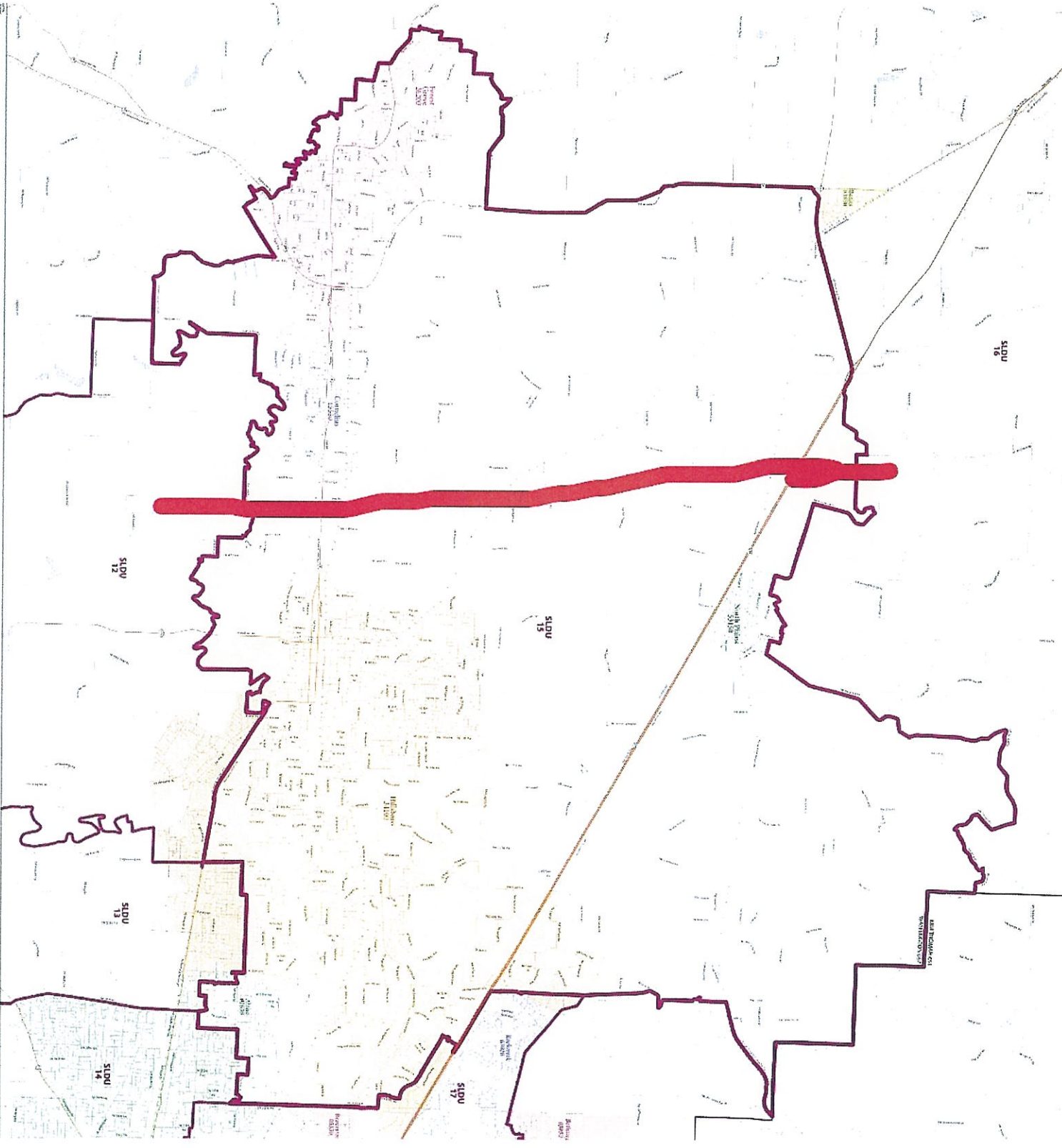


- △ Command & Training
- Fire Stations
- South Command Center
- - - County Boundaries
- ▭ TVF&R Boundary



City of Portland, Oregon
Department of Planning and Economic Development
2010 Census Tract Data
Map Date: 10/15/10
Map Scale: 1" = 1/2 Mile
Map Projection: NAD 83 UTM Zone 18N
Map Author: City of Portland, Oregon
Map Contact: Planning and Economic Development
Map URL: [http://www.portland.gov/planning](#)

Map of Portland, Oregon
City of Portland, Oregon
2010 Census Tract Data
Map Date: 10/15/10
Map Scale: 1" = 1/2 Mile
Map Projection: NAD 83 UTM Zone 18N
Map Author: City of Portland, Oregon
Map Contact: Planning and Economic Development
Map URL: [http://www.portland.gov/planning](#)



Map of Portland, Oregon
City of Portland, Oregon
2010 Census Tract Data
Map Date: 10/15/10
Map Scale: 1" = 1/2 Mile
Map Projection: NAD 83 UTM Zone 18N
Map Author: City of Portland, Oregon
Map Contact: Planning and Economic Development
Map URL: [http://www.portland.gov/planning](#)

Map of Portland, Oregon
City of Portland, Oregon
2010 Census Tract Data
Map Date: 10/15/10
Map Scale: 1" = 1/2 Mile
Map Projection: NAD 83 UTM Zone 18N
Map Author: City of Portland, Oregon
Map Contact: Planning and Economic Development
Map URL: [http://www.portland.gov/planning](#)

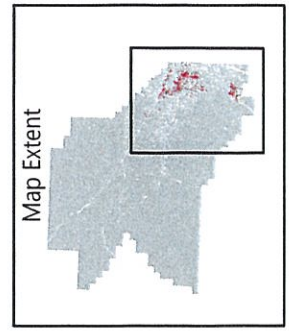
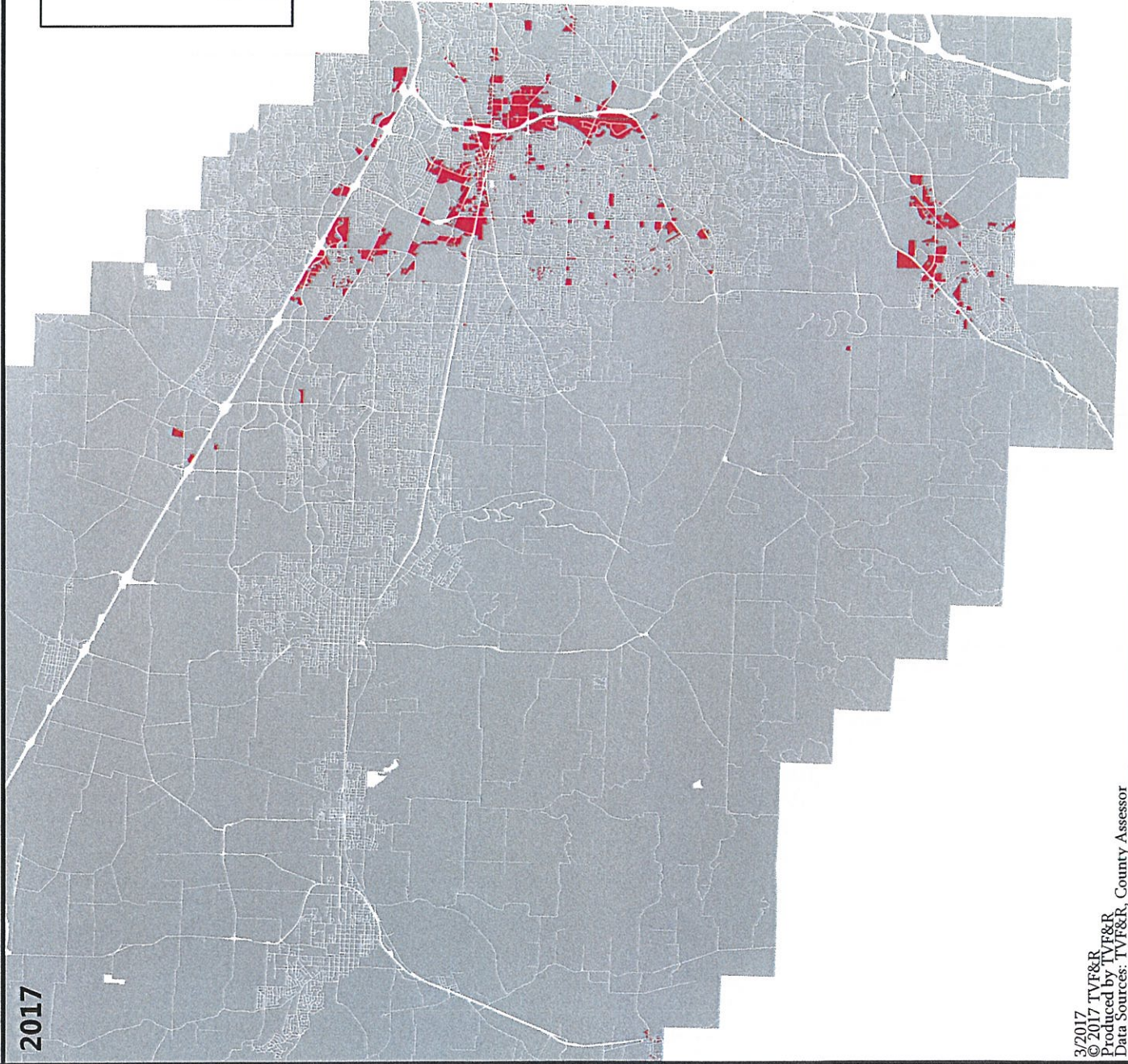
LOL Rate Compression in Washington County

2017

LOL Rate Compression

- Tax Lots Under Rate Compression
- No Compression

2017 Compression Total	\$ 655,184
Compression with \$0.34 LOL	\$ 1,072,355



Increase	Agency w/LOL	Existing LOL	Proportion	Compression	Agency w/LOL	Adj LOL	Proportion	Compression	Add+ Compr.	Of Total	Increased
0.34	County	\$ 0.640	54.0%	\$ 353,556	County	\$ 0.640	41.9%	\$ 449,742	\$ 96,186	23.1%	27.2%
	TVFR	\$ 0.450	37.9%	\$ 248,594	TVFR	\$ 0.450	29.5%	\$ 316,225	\$ 67,631	16.2%	27.2%
	Metro	\$ 0.096	8.1%	\$ 53,033	Metro	\$ 0.096	6.3%	\$ 67,461	\$ 14,428	3.5%	27.2%
	Washington Cty New	\$ -	0.0%	\$ -	Washington Cty New	\$ 0.340	22.3%	\$ 238,926	\$ 238,926	57.3%	100.0%
		\$ 1.186	100%	\$ 655,184		\$ 1.526	100%	\$ 1,072,355	\$ 417,171	100.0%	