

# OCAPA Legislative Change



**Oregon Concrete  
& Aggregate**  
PRODUCERS ASSOCIATION

# Volumetric Mixer



# House Bill 2022

- ▣ 1.) HB 2022 changes Fixed Load Vehicle statute so Volumetric Mixers fall under the same category as Transit Mixers.
- ▣ 2.) HB 2022 cleans up the statute by replacing the term “cement” for “concrete” where appropriate.



# Cement is an ingredient of Concrete

Concrete includes these basic components:



# Purpose of HB 2022

- ▣ 1. Treat concrete delivery trucks similarly under Oregon laws and taxation rules
- ▣ 2. Create competitive fairness across types of concrete delivery trucks
- ▣ 3. Eliminate “cement mixer”, “cement batch plants”, and “cement pavement finishers” because those vehicle configurations don’t exist; but replace them with “concrete” vehicle configurations that do exist.

# Transit Mixer





# Volumetric Mixer



# Volumetric Mixer





# Concrete Batch Plant



For tax purposes, this example of a semi-permanent unit will remain the same, but be identified correctly as a Concrete Batch Plant instead of Cement Batch Plant.

# Concrete Batch Plant



This is an example of a permanent Concrete Batch Plant.



# Both Deliver Concrete



Volumetric Mixer



Transit Mixer



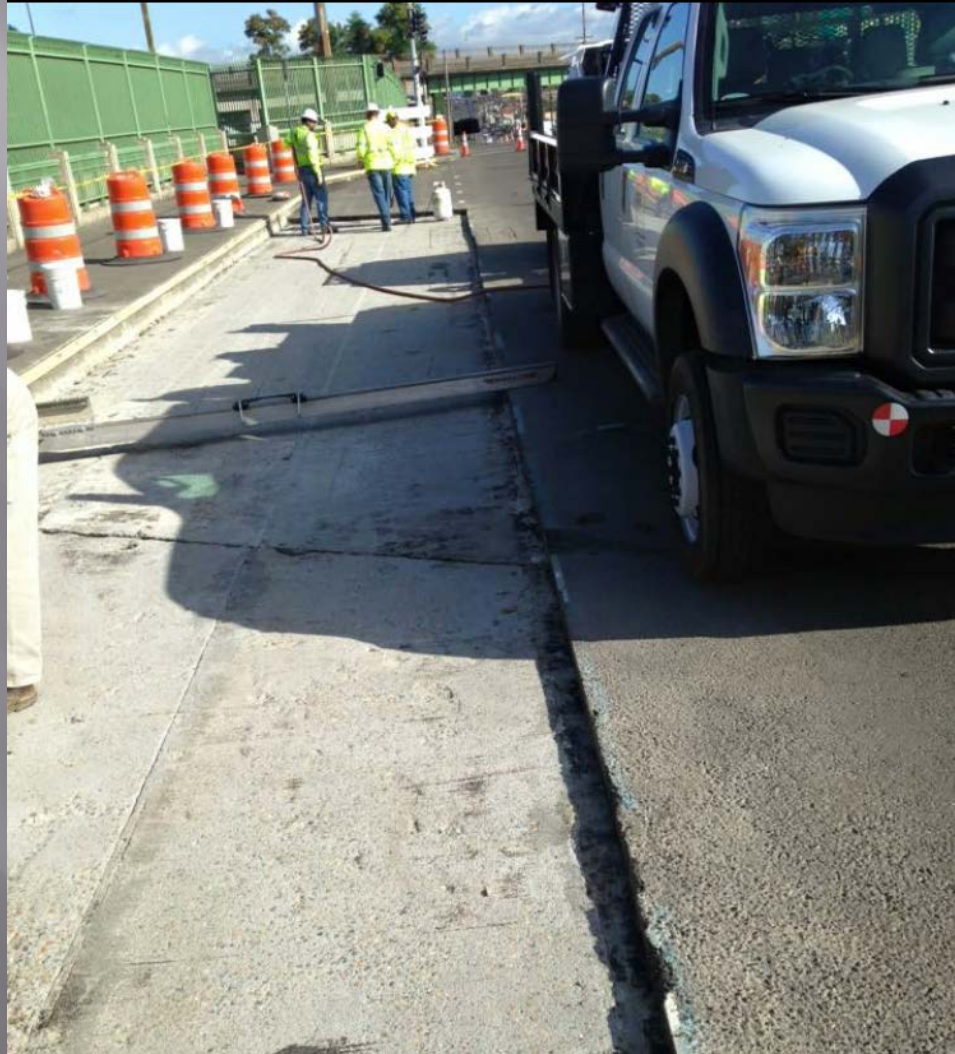
# Concrete Delivery



PDX Airport Upper Deck Repair by Volumetric Mixer



# Concrete Delivery



Bus Pad on 82nd Ave. Overpass above I-84 to be poured by Volumetric Mixer

# Concrete Delivery



Pouring Necanicum bridge deck overlay on Hwy 26 by Volumetric Mixer



# Concrete Delivery



Interstate 5 Overpass at Woodburn:  
Project poured by Volumetric Mixer

# Concrete Delivery



Roundabout Intersection Pour by Transit Mixer



# Conclusion

- ▣ 1.) HB 2022 cleans up “fixed load vehicle” statute.
- ▣ 2.) HB 2022 treats concrete truck delivery systems the same for tax purposes.
- ▣ 3.) HB 2022 allows competitive fairness for Oregon’s smallest concrete companies, which compete against larger businesses, by having them fall under the same tax system.