



## HOOD RIVER/WHITE SALMON INTERSTATE BRIDGE

*Aerial view of narrow traffic lanes with barge tow navigating under the bridge, circa 2015*





## HOOD RIVER/WHITE SALMON INTERSTATE BRIDGE

*View of barge navigating under the bridge lift span, circa 2016*





## HOOD RIVER/WHITE SALMON INTERSTATE BRIDGE

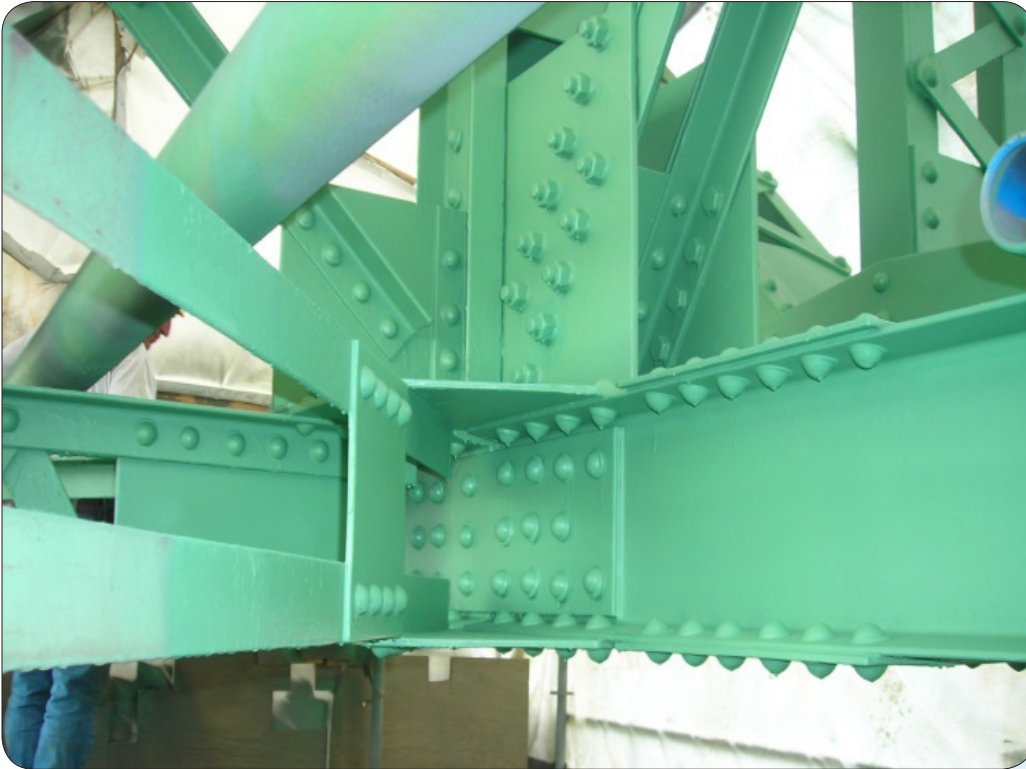
*Narrow lanes exacerbate traffic back-ups during June 3, 2016 oil train derailment/freeway closure*





## HOOD RIVER/WHITE SALMON INTERSTATE BRIDGE

2011 Painting project. The Port anticipates \$48M in maintenance and repairs over the next 15 years





## HOOD RIVER/WHITE SALMON INTERSTATE BRIDGE

*Port of Hood River crews working on skew adjustment upgrade, 2016*





## HOOD RIVER/WHITE SALMON INTERSTATE BRIDGE

*Various signs of the bridge being functionally obsolete for both vehicle and marine freight*

