



Oregon

Kate Brown, Governor

Department of Transportation

Director's Office

355 Capitol St. NE, MS 11

Salem, OR 97301

DATE: March 7, 2017

TO: House Committee on Judiciary

FROM: Troy Costales, Administrator
Transportation Safety Division

SUBJECT: House Bill 2598

INTRODUCTION

House Bill 2598 changes the list of items for which a person can be charged with reckless assault to include contact between a person's vehicle and a motorcycle or its operator or passenger.

DISCUSSION

The Oregon Department of Transportation collects crash data from accident reports submitted to the Driver and Motor Vehicle Services Division. Below is some information related to the frequency of crashes involving motorcycles, how often they are struck by another vehicle, and the relative frequency/severity of those crashes compared to other types of crashes in Oregon.

Crash Data

Motorcyclists Killed and Injured
All Crash Types, 2012 - 2014

YEARS	Motorcyclists Killed	Motorcyclists Injured
2012	49	1,028
2013	31	953
2014	44	874
TOTAL	124	2,855

Motorcyclists Killed and Injured
in Vehicle-to-Vehicle Crashes

YEARS	Motorcyclists Killed	Motorcyclists Injured
2012	20	529
2013	13	496
2014	22	433
TOTAL	55	1,458

Motorcyclists Killed and Injured in
Vehicle-to-Vehicle Crashes where the
Motorcycle was the Striking Vehicle

YEARS	Motorcyclists Killed	Motorcyclists Injured
2012	14	331
2013	13	301
2014	19	280
TOTAL	46	912

Motorcyclists Killed and Injured in Vehicle-
to-Vehicle Crashes where the Motorcycle
was Not the Striking Vehicle

YEARS	Motorcyclists Killed	Motorcyclists Injured
2012	6	198
2013	0	195
2014	3	153
TOTAL	9	546

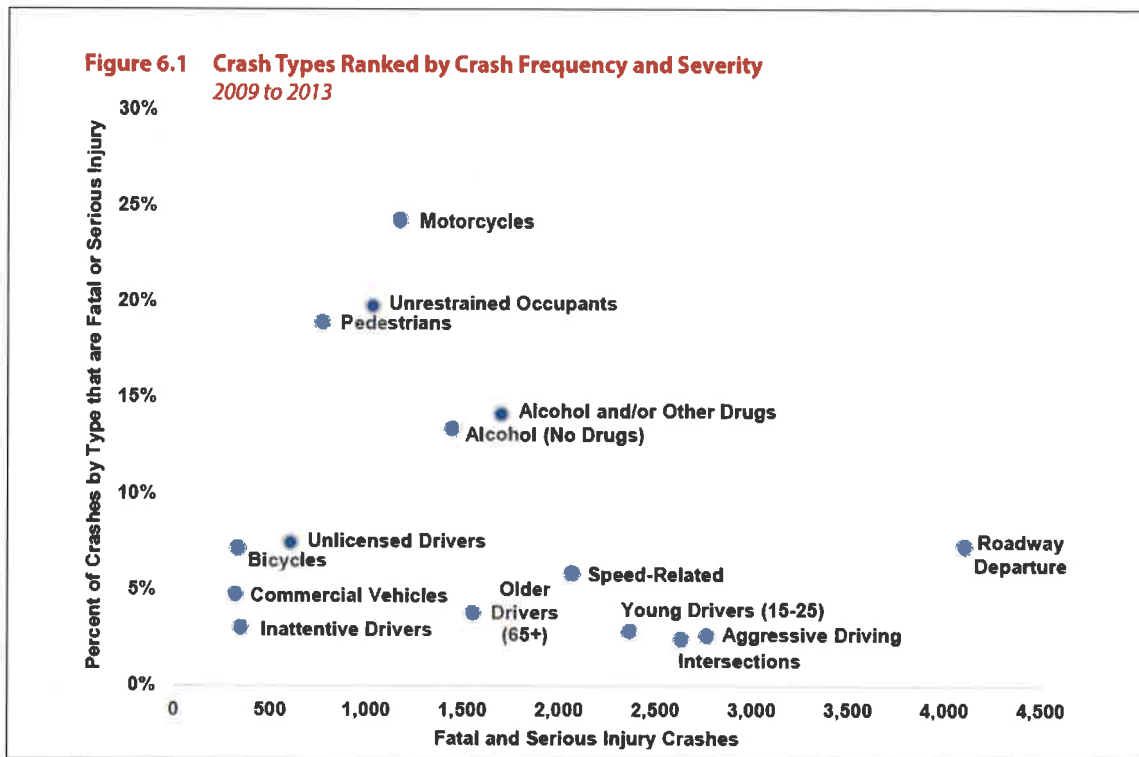
Motorcyclists Killed and Injured in
 Crashes where a **Motorcycle Struck**
Another Motorcycle

YEARS	Motorcyclists Killed	Motorcyclists Injured
2012	2	28
2013	0	22
2014	3	26
TOTAL	5	76

Note: The first striking vehicle is not relevant to which vehicle has the crash fault

Frequency and Severity Comparison

Figure 6.1 is from the recently approved Transportation Safety Action Plan, page 70. The information is a combination of the frequency of fatal and serious injury crashes plus the percentage of these crashes that result in fatal or serious injury.



SUMMARY

HB 2598 changes the penalty for those who operate a vehicle recklessly and come into contact with a motorcyclist or passenger.