

Presentation of Agriculturally- Zoned Lands, East of Bend

5/13/2017

NRCS Mapping Unit 58c, Gosney-Rock outcrop-Deskamp complex, 0 to 15 percent slopes

Composition

- Gosney 50% of map unit, class 7e soils
- Rock outcrop 25% map unit, class 8 soils
- Deskamp 20% of map unit, 6e soils (4e when irrigated)

Setting

- Landscape position: Gosney soil—mounds; Deskamp soil—swales
- Landform: Lava plains
- Parent material: Ash
- Elevation: 3,000 to 4,000 feet
- Native plants: Gosney soil—western juniper, mountain big sagebrush, antelope bitterbrush, bluebunch wheatgrass, Idaho fescue; Deskamp soil—western juniper, mountain big sagebrush, antelope bitterbrush, Idaho fescue, needleandthread

NRCS Mapping Unit 58c, Gosney-Rock outcrop-Deskamp complex, 0 to 15 percent slopes, cont.

Major Use

- Livestock Grazing

Major Management Limitations

- Rock outcrop, surface texture, soil depth, permeability, rock fragments in surface layer

Management Considerations

- Because the soils are influenced by pumice ash, reestablishment of the native vegetation is very slow if the vegetation is removed or deteriorated.
- Pond development is limited by the soil depth, risk of seepage, and steepness of slope.
- The restricted depth of the Gosney soil limits the choice of species for range seeding to drought-tolerant varieties.
- Range seeding with ground equipment is limited by the rock fragments on the surface of the Gosney soil.
- The areas of Rock outcrop limit the areas suitable for grazing and restrict accessibility by livestock.

Stevens Road Tract #1



Stevens Road Tract #2



Stevens Road Tract #3



Neff Road, East of Hamby



Neff Road Solar Farm, East of Hamby

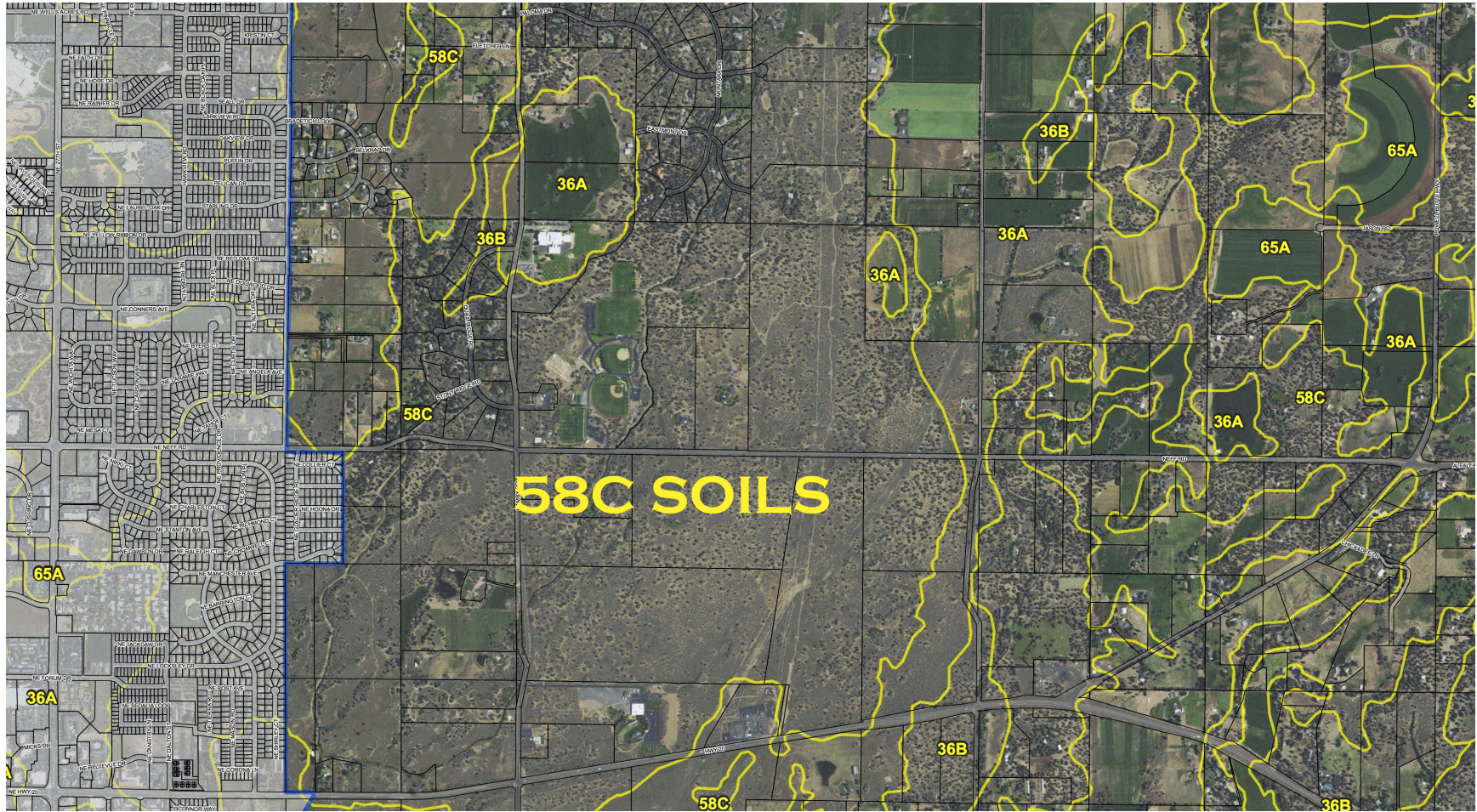


Power Lines/ROW Neff Road



Land Use Patterns, Mapping Unit 58C, East of Bend

(Parcelized Ownership, fragmented by roads, power lines, bordered by numerous land uses.)



Landscape-Level Perspective



Contact: Erik Kancler 541.788.8460, erik@kanclerconsulting.com