

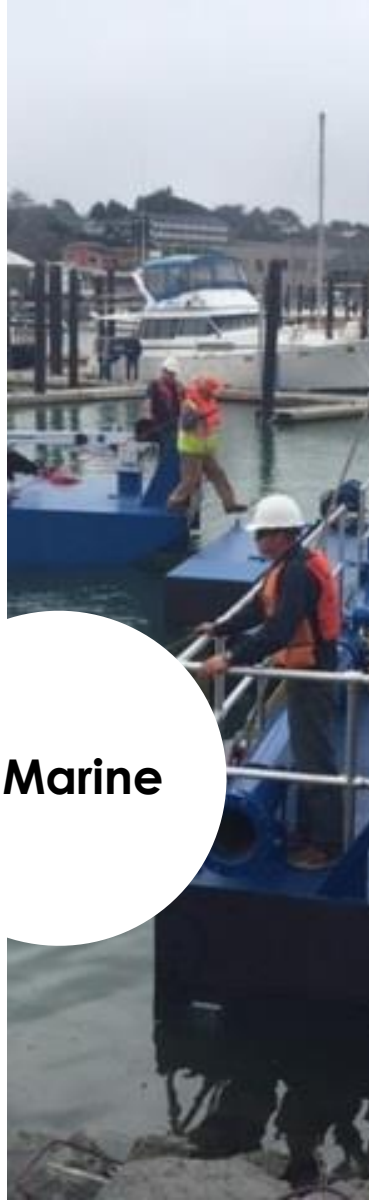
Aviation



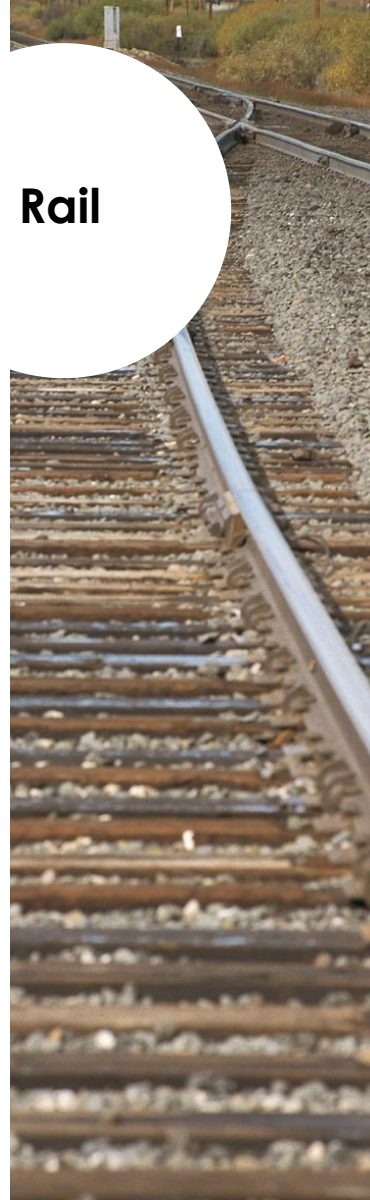
Bike-Ped



Marine



Rail



**Funding
Multimodal
Transportation**



Status Quo

AVIATION, MARINE, RAIL, BIKE/PED & TRANSIT

Issues Considered **BY THE WORKGROUP**

Funding

Modes

Process

Match

WHAT DO WE WANT TO BUY?

Workgroup Recommendation **\$100 MILLION TOTAL**

- \$55 Connect Oregon VII.01
- \$45 Connect Oregon VII.02
- Projects of Statewide Significance



Connect Oregon

VII.01

CREATING

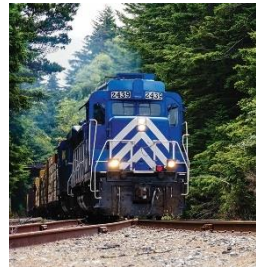
Connections. **Jobs.** Community.

\$55
Million

DISTRIBUTION

\$7 Million dedicated to Bike/Ped

\$47 Million for Aviation, Marine & Rail



\$45
Million

Connect Oregon

VII.02

PROJECTS OF STATEWIDE SIGNIFICANCE

Improve local, state and regional economies.

MARINE, AVIATION & RAIL

Fix-it. Crucial Maintenance.

Enhance. New investments.



Lottery dollars are
UNPREDICTABLE



Tax AGGREGATE

\$1.00 per ton.
Equals \$100 Million a biennium.



And oh by the way...

LET'S TALK ABOUT DREDGING



Marine DREDGING & DERELICT VESSELS

\$250,000 per year.

RECAP & QUESTIONS?

\$100 MILLION

- \$55 Million for Connect Oregon
 - \$7 Million dedicated to Bike/Ped
 - \$47 Million for Aviation, Marine & Rail
- \$45 Million for Projects of Statewide Significance

\$250 THOUSAND

- \$200 Thousand for Dredging
- \$50 Thousand for Derelict Vessels