

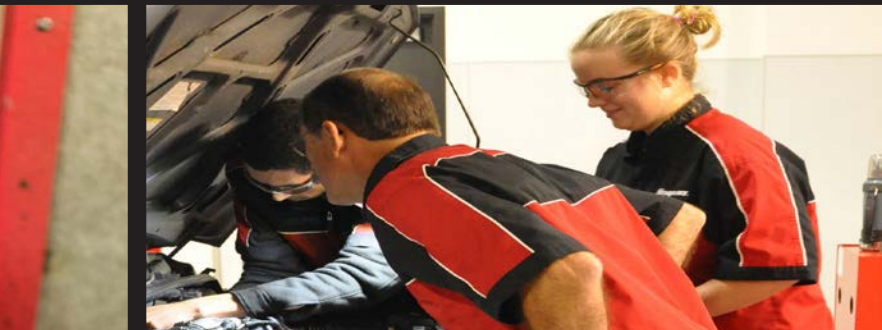
Umpqua Community College Industrial Technology Building



- Helps address the looming skills gap by providing students with job-ready, high-demand skills in modern lab spaces
- Provides hands-on training using current industrial equipment in non-traditional classrooms
- Provides critical expansion space for Automotive Technology (Toyota T-TEN, CAP Local) and Welding Technology/Fabrication
- Space provision for possible Apprentice and Journeyman Training, Manufacturing, or Diesel Mechanics
- Total project cost: \$20.1M
Legislative request: \$8M

Linn-Benton

COMMUNITY COLLEGE

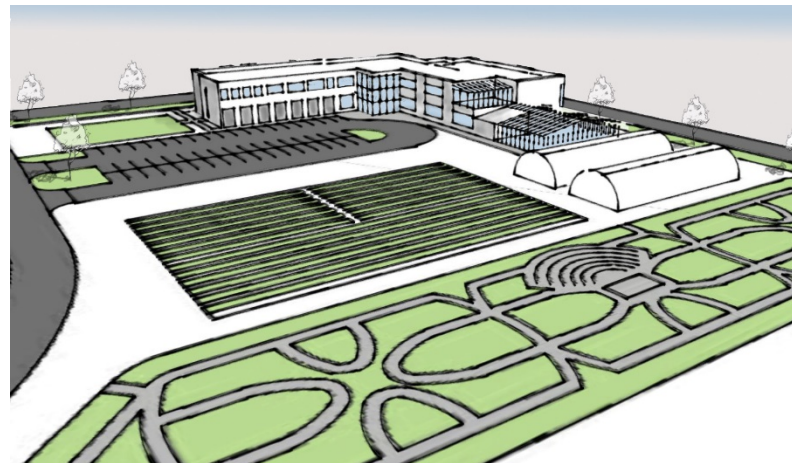


inspired

Chemeketa Agricultural Complex

This \$12 million project will expand programs, facilities, and collaboration of educational partners to better meet the training needs of Willamette Valley agriculture

1. Complex to include: classroom and office building, storage, greenhouse, hoop houses, learning and research gardens, and an incubator farm.
2. Co-location with partners to create a hub of agricultural related classes and programming will occur: OSU Extension, Marion-Polk Food Share
3. Community classrooms will allow training and meeting space for small to large groups
4. Request is for \$6 million





**Portland
Community
College**



Health Care Village



- Coordinates and strengthens educational programs across health professions
- Addresses specific needs for Lane's Dental Hygiene, Dental Assistant, Dental Therapy (proposed), and Medical Office Assistant Program
- Returns Dental Clinic to campus
- 24,000 sq. ft., total cost of project = \$16.2 million



SOUTHWESTERN
AN OREGON COMMUNITY COLLEGE



STUDENT SUCCESS CENTER

DeJardin/Pauling Science Complex

Project Cost: \$24.7 million
Legislative match: \$8 million

*One lab serves
14,000 degree-
seeking students*



Project:

- Shortens class wait lists
- Reduces time to degree completion
- Reduces time to university transfer
- Reduces class overcrowding
- Supports STEM Club to grow student retention
- Expands partnership research opportunities

Mt. Hood Community College

Continue to build the West side of our district with vibrant and useful educational opportunities

- To provide new state-of-the-art instructional space
- To provide space for more complete student services
- To provide space for the expansion of programs allowing for the completion of certificates and degrees



BLUE MOUNTAIN COMMUNITY COLLEGE: FARM II PROJECT



Oregon Coast Community College Workforce Education and Resiliency Center



Why this facility and programming?

- Lincoln County, increasingly diverse population coping with economic challenges, intergenerational poverty and lower educational achievement.
- Employers report a shortage of prepared applicants, slowing economic development.
- OCCC requires career technical (CTE) facilities to meet Lincoln County workforce needs.
- Coastal Resilience: *planning for reconstruction and recovery must be done now to provide a strategic vision for restoring the economy and livability of the Oregon coast* (The Oregon Resilience Plan, 2013).

Benefits to our community

- Support families, employers, and economy with education for living wage jobs.
- Increased student readiness to enter the workforce.
- Programming under evaluation: Emergency Preparation & Management; Maritime Technicians; Applied Technology (Trades); P-12 Teacher Education.
- Potential for Regional Training facility.
- Improve student achievement and college and career readiness.
- Increased postsecondary enrollment.

Partnerships

- Industry: Ports, Boatyards, Georgia Pacific, Yaquina Bay
- Education: Lincoln County School District, OSU Marine
- Local Government: City of Newport, Lincoln County
- Coast STEM Hub, RAC, Children's Development Network
- Oregon Maritime Workforce Solutions Group

Match Plans, some combination of

- Partnerships
- Local Bond
- Capital Campaign
- Grants

Office of President | 05-01-2017



Science & Nursing Buildings

Science Building

Project Cost: \$12 million – includes \$6 million legislative funding

- Science building 40 years old
- Supports RN, PN, 12 Allied Health programs, STEM, and numerous other programs of study
- Healthcare and science are top 5 growing job sectors
- Project provides updates to labs and equipment, and 16,000 additional square feet



Nursing Building

Project Cost: \$4 million - includes \$2 million legislative funding

- Nursing building 50 years old
- Asante currently has 900 regional job openings, 300 in nursing
- Project provides updated skills labs and equipment, and 5,000 additional square feet



Clatsop CC Marine and Environmental Research and Training Station Expansion

- Maritime Industry= acute need for educated workforce
- High wage jobs for Oregonians 40-50K
- 20 yr. old facility needs space for new programming and specialized equipment
- Funds provide additional 13,200 sq. ft. for new programs

