

Taken from NORTHWEST Wind Resource
and Action Center

Wind	Two Dot Wind Farm	Operating	MT	Wheatland	9.7 MW
Wind	Biglow Canyon - Phase 2	Operating	OR	Sherman	149.5 MW
Wind	Biglow Canyon - Phase 3	Operating	OR	Sherman	174.8 MW
Wind	Biglow Canyon - Phase I	Operating	OR	Sherman	125.4 MW
Wind	Combine Hills	Operating	OR	Umatilla	41 MW
Wind	Combine Hills - Phase II	Operating	OR	Umatilla	63 MW
Wind	Condon (Phase I)	Operating	OR	Gilliam	24.6 MW
Wind	Condon (Phase II)	Operating	OR	Gilliam	25.2 MW
Wind	Echo - Big Top	Operating	OR	Umatilla	1.65 MW
Wind	Echo - Butter Creek Power	Operating	OR	Umatilla	4.95 MW
Wind	Echo - Four Corners Windfarm	Operating	OR	Umatilla	10 MW
Wind	Echo - Four Mile Canyon Wind	Operating	OR	Morrow	10 MW
Wind	Echo - Oregon Trail Windfarm	Operating	OR	Umatilla	9.9 MW
Wind	Echo - Pacific Canyon Windfar	Operating	OR	Morrow	8.25 MW
Wind	Echo - Sand Ranch Windfarm	Operating	OR	Morrow	9.9 MW
Wind	Echo - Wagon Trail	Operating	OR	Morrow	3.3 MW
Wind	Echo - Ward Butte Windfarm	Operating	OR	Umatilla	6.6 MW
Wind	Elkhorn Wind Power Project	Operating	OR	Union	100.7 MW
Wind	Hay Canyon	Operating	OR	Sherman	100.8 MW
Wind	Klondike I	Operating	OR	Sherman	24 MW
Wind	Klondike II	Operating	OR	Sherman	75 MW
Wind	Klondike III	Operating	OR	Sherman	223.6 MW
Wind	Klondike IIIa	Operating	OR	Sherman	76.5 MW
Wind	Leaning Juniper	Operating	OR	Gilliam	100.5 MW
Wind	Leaning Juniper II	Operating	OR	Gilliam	201.6 MW
Wind	Lime Wind	Operating	OR	Baker	3 MW
Wind	PãjTu Wind Farm	Operating	OR	Sherman	9 MW
Wind	Pebble Springs Wind	Operating	OR	Gilliam	98.7 MW
Wind	Project Chopin	Operating	OR	Umatilla	10.2 MW
Wind	Rattlesnake Rd Wind Phase I	Operating	OR	Gilliam	102.9 MW
Wind	Shepherds Flat Central - S. Hur	Operating	OR	Gilliam & N	290 MW
Wind	Shepherds Flat North - N. Hur	Operating	OR	Gilliam	265 MW
Wind	Shepherds Flat South - Horses	Operating	OR	Gilliam & N	290 MW
Wind	Star Point	Operating	OR	Sherman	98.7 MW
Wind	Stateline (OR side)	Operating	OR	Umatilla	122.8 MW
Wind	Threemile Canyon Wind	Operating	OR	Morrow	9.9 MW
Wind	Vansycle II (Stateline III)	Operating	OR	Umatilla	98.9 MW
Wind	Vansycle Windplant	Operating	OR	Umatilla	25.1 MW
Wind	Wheat Field Wind Farm	Operating	OR	Gilliam	96.6 MW
Wind	Willow Creek	Operating	OR	Gilliam & N	72 MW

Operating 3,163,55 MW

Term	Project Name	Operating	State	County	Capacity	Capacity Uni	Developers
Wind	• Golden Hills Wind Project	Approved	OR	Sherman	400 MW		Orion Rene
Wind	High Plateau Windfarm	Approved	OR	Morrow	10 MW		Intelligent '
Wind	Horn Butte Wind Project	Approved	OR	Gilliam	78 MW		Invenergy
Wind	Lower Ridge Windfarm	Approved	OR	Morrow	10 MW		Intelligent '
Wind	Mariah Wind	Approved	OR	Morrow	10 MW		Mariah Wir
Wind	• Montague Wind Power Facility	Approved	OR	Gilliam	404 MW		Iberdrola R
Wind	Mule Hollow Windfarm	Approved	OR	Morrow	10 MW		Intelligent '
Wind	Orem Family Wind	Approved	OR	Morrow	10 MW		Eric Orem
Wind	Pine City Windfarm	Approved	OR	Morrow	10 MW		Intelligent '
Wind	• Saddle Butte Wind	Approved	OR	Gilliam & N	399 MW		Columbia V
Wind	Stateline Expansion (1 of 2)	Approved	OR	Umatilla	184 MW		NextEra
Wind	Stateline Expansion (2 of 2)	Approved	OR	Umatilla	19 MW		NextEra
Wind	• Summit Ridge Wind	Approved	OR	Wasco	194.4 MW		LotusWork:
Wind	West Butte Wind	Approved	OR	Crook	104 MW		Pacific Win:

1842.40 MW
 • wheatridge approved
 (contested case) 500.00 MW
 Total approved 2,342.40
 Not yet constructed

Wind	Benson Creek Windfarm	Under Construction	OR	Baker	10 MW		
Wind	Durbin Creek Windfarm	Under Construction	OR	Baker	10 MW		
Wind	Jett Creek Windfarm	Under Construction	OR	Baker	10 MW		
Wind	Prospector Windfarm	Under Construction	OR	Baker	10 MW		
Wind	Willow Spring Windfarm	Under Construction	OR	Baker	10 MW		

50 MW



State Solar Policy

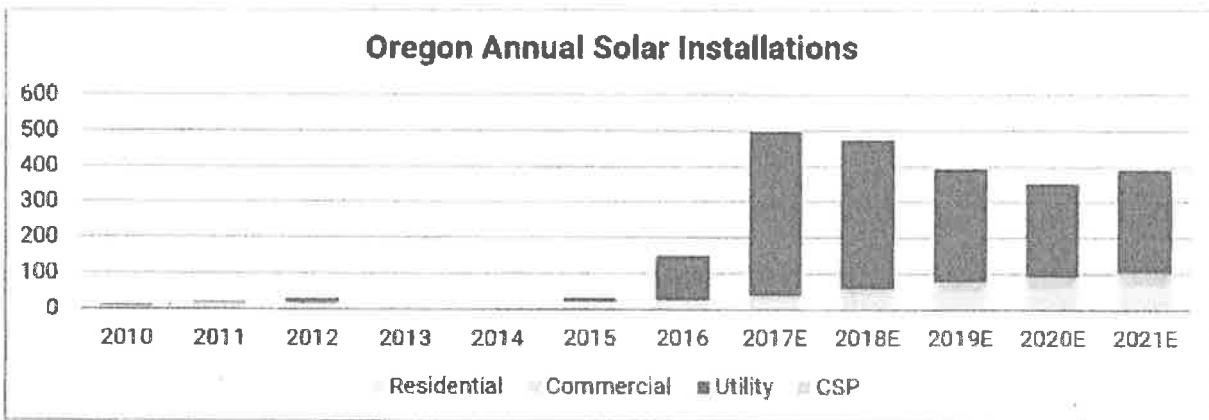
Oregon Solar

Facts on the Oregon Solar Industry

- **Solar Installed:** 264.2 MW (150.0 MW in 2016)¹
- **National Ranking:** 19th (18th in 2016)
- **State Homes Powered by Solar:** 33,000
- **Percentage of State's Electricity from Solar:** 0.23%²
- **Solar Jobs and Ranking:** 4,509 (13th in 2016)³
- **Solar Companies in State:** 166 companies total; 37 Manufacturers, 86 Installers/Developers, 43 Others⁴
- **Total Solar Investment in State:** \$684.97 million (\$201.08 million in 2016)
- **Price Declines:** 64% over last 5 years
- **Growth Projections and Ranking:** 2,100 MW over next 5 years (ranks 12th)

In 2009 there were 14 MW installed solar

Click here to download the factsheet. (<http://www.seia.org/sites/default/files/OR%202016Q4.pdf>)

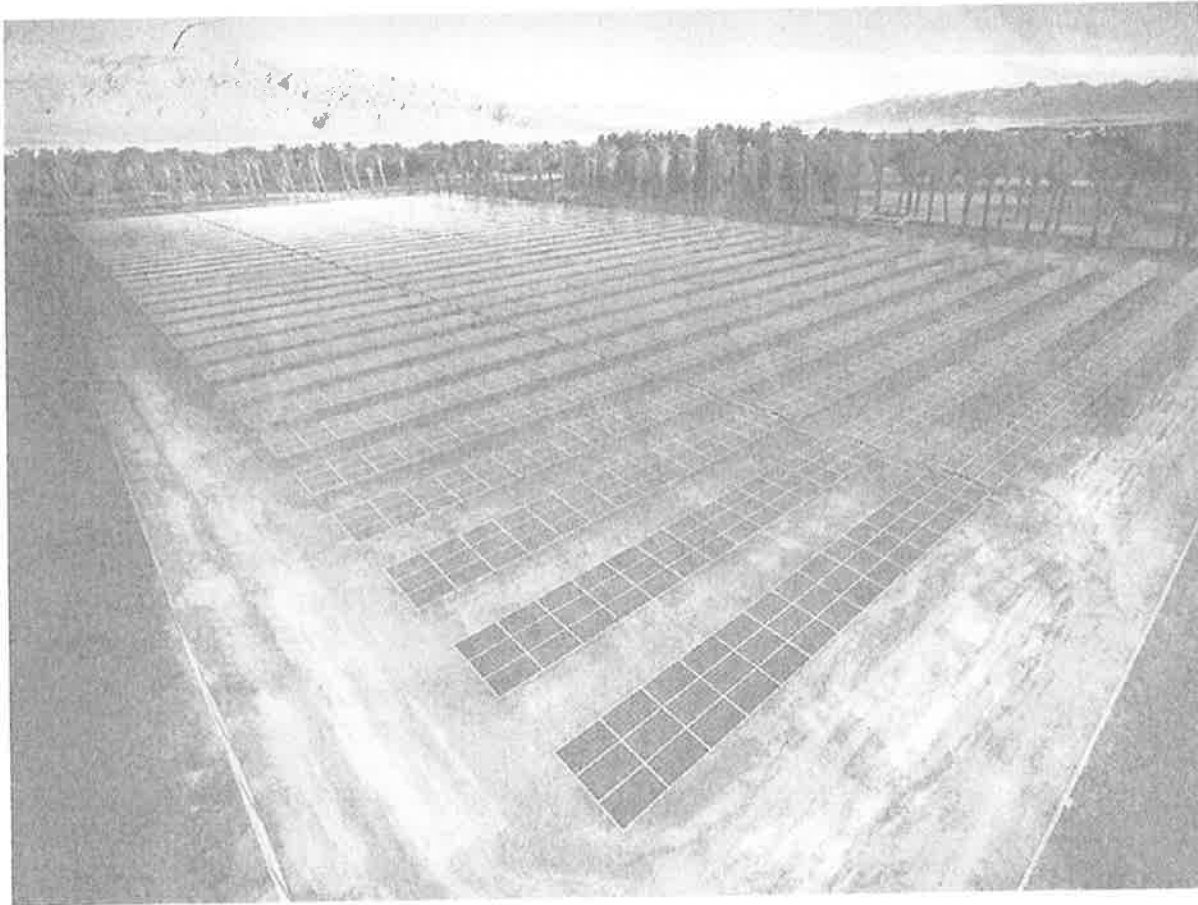


View more solar industry data (<http://www.seia.org/research-resources/solar-industry-data>) .

Report Counts Up Solar Power Land Use Needs

By Dave Levitan

Posted 7 Aug 2013 | 18:28 GMT



The National Renewable Energy Laboratory (NREL) released a report (<http://www.nrel.gov/docs/fy13osti/56290.pdf>) [PDF] last week that aimed to quantify exactly how much room solar power requires. Land use and space issues have long been a point of contention when it comes to renewables, with opponents complaining that the huge spaces required for solar and wind aren't worth the effort. The NREL report suggests the acreage required for industrial-scale solar power plants is within the range of previous estimates, and generally doesn't seem off-the-charts outrageous.

"The numbers aren't good news or bad news," said Paul Denholm, one of the report's authors, in a [press release](http://www.nrel.gov/news/press/2013/2269.html) (<http://www.nrel.gov/news/press/2013/2269.html>). "It's just that there was not an understanding of actual land use requirements before this work." The report used land use data from 72 percent of all large solar plants installed in the U.S., and found that the total area requirements for a photovoltaic (PV) plant between 1 and 20 megawatt capacity is 8.3 acres per MW. For larger PV plants, the total area needed is 7.9 acres per MW, while concentrating solar power plants (CSP) need 10 acres per MW. When weighted by generation rather than capacity, the larger PV plants (3.4 acres per gigawatt-hour per year) and CSP plants (3.5 acres/GWh/year) do a bit better than smaller PV plants (4.1 acres/GWh/year).

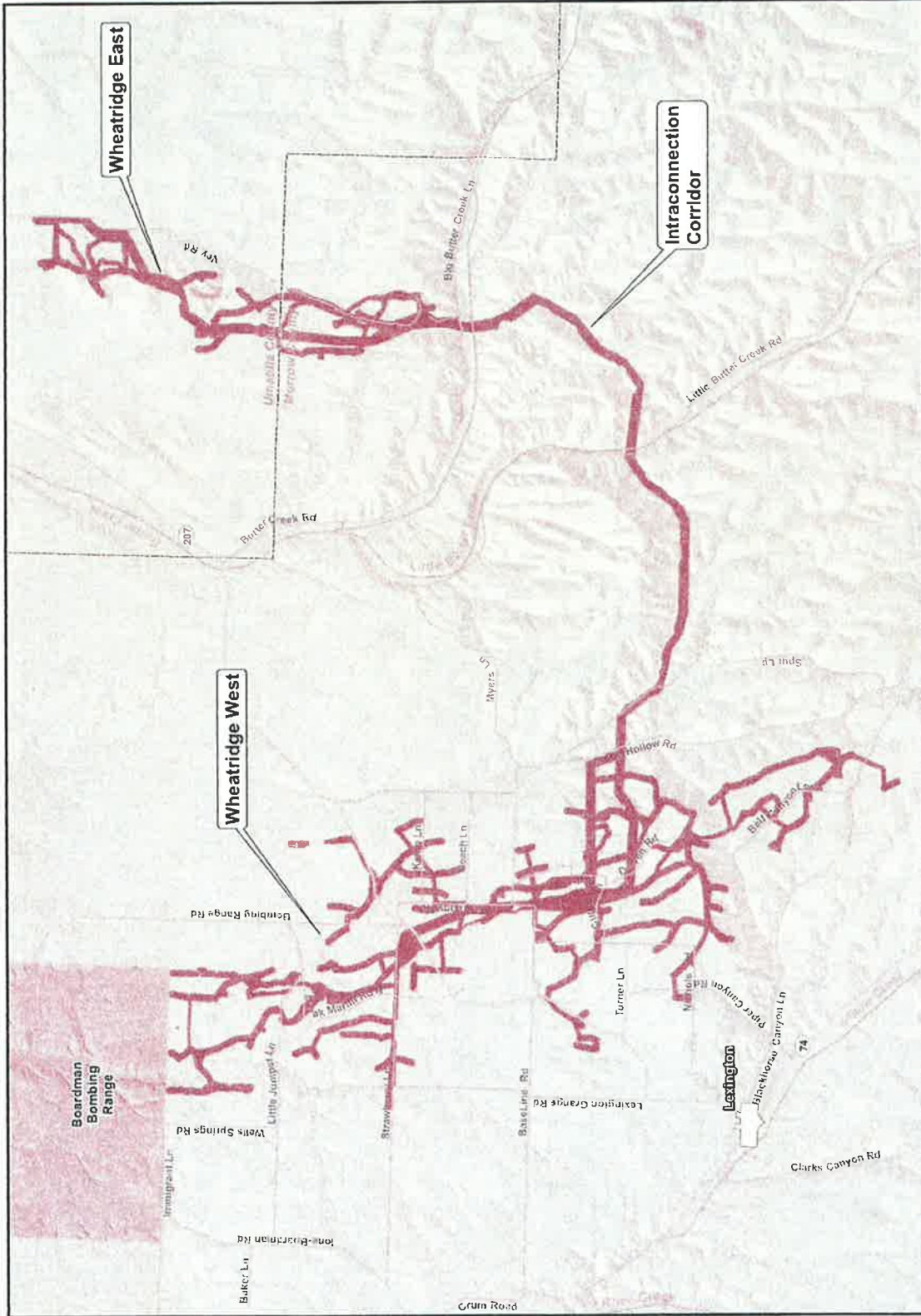
Figure C-2

Wheatridge Wind Energy Facility



Morrow and Umatilla Counties, OR
December 2014

- Site Boundary
- County Boundary
- City/Town
- State Highway
- Local Road
- River/Stream
- Land Ownership
- Bureau of Land Management
- Private
- Dept. of Defense



1:135,000 WGS84 UTM 11

0 1 2 3 4 5 6 8 10 12 14 16 18 20 Miles

Data Sources: Wheatridge Wind Energy: site boundary / ESRI: roads, cities, political boundaries, hydrography / Oregon BLM: land ownership / USDA/NAP: aerial imagery.

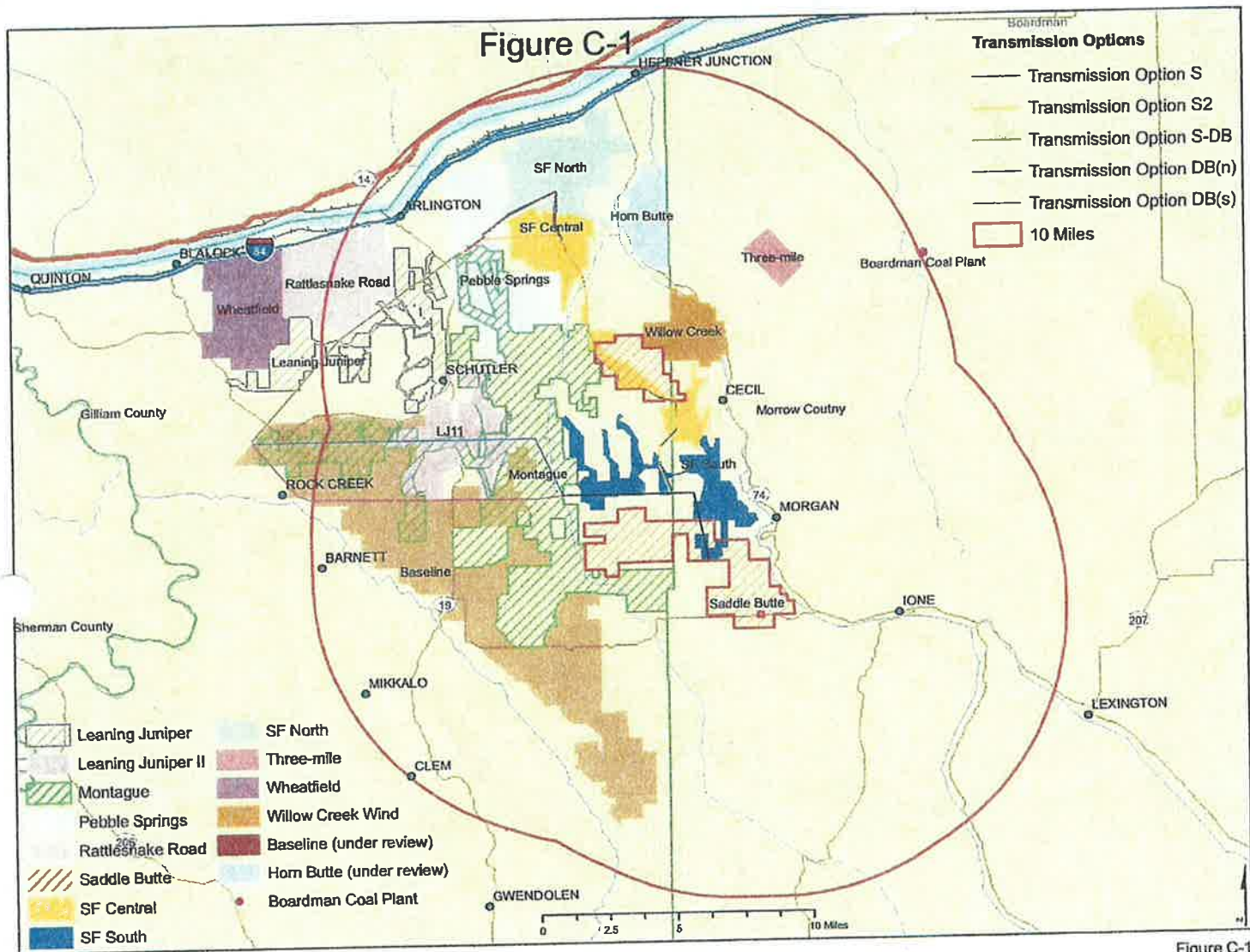


Figure C-1

Saddle Butte Wind Farm

Leaning Jupiter
 Leaning Jupiter II
 Montague = 33,402 acres
 Pebble Springs
 Rattlesnake Road = 8,500 acres
 Saddle Butte = 13,555 acres
 Shepherd Flats = 19,200 acres

Three-mile = 8,500
 Wheatfield = ~~8,500~~ acre
 Willow Creek
 Baseline = 36,351 acres
 Horn Butte