

Figure 1. Location of sites infested with *Phytophthora ramorum* in southwest Oregon that were discovered in 2014-2016. All 2015 infestations have received some level of eradication treatment. Yellow circles designate 2016 infestations that have been prioritized for treatment.



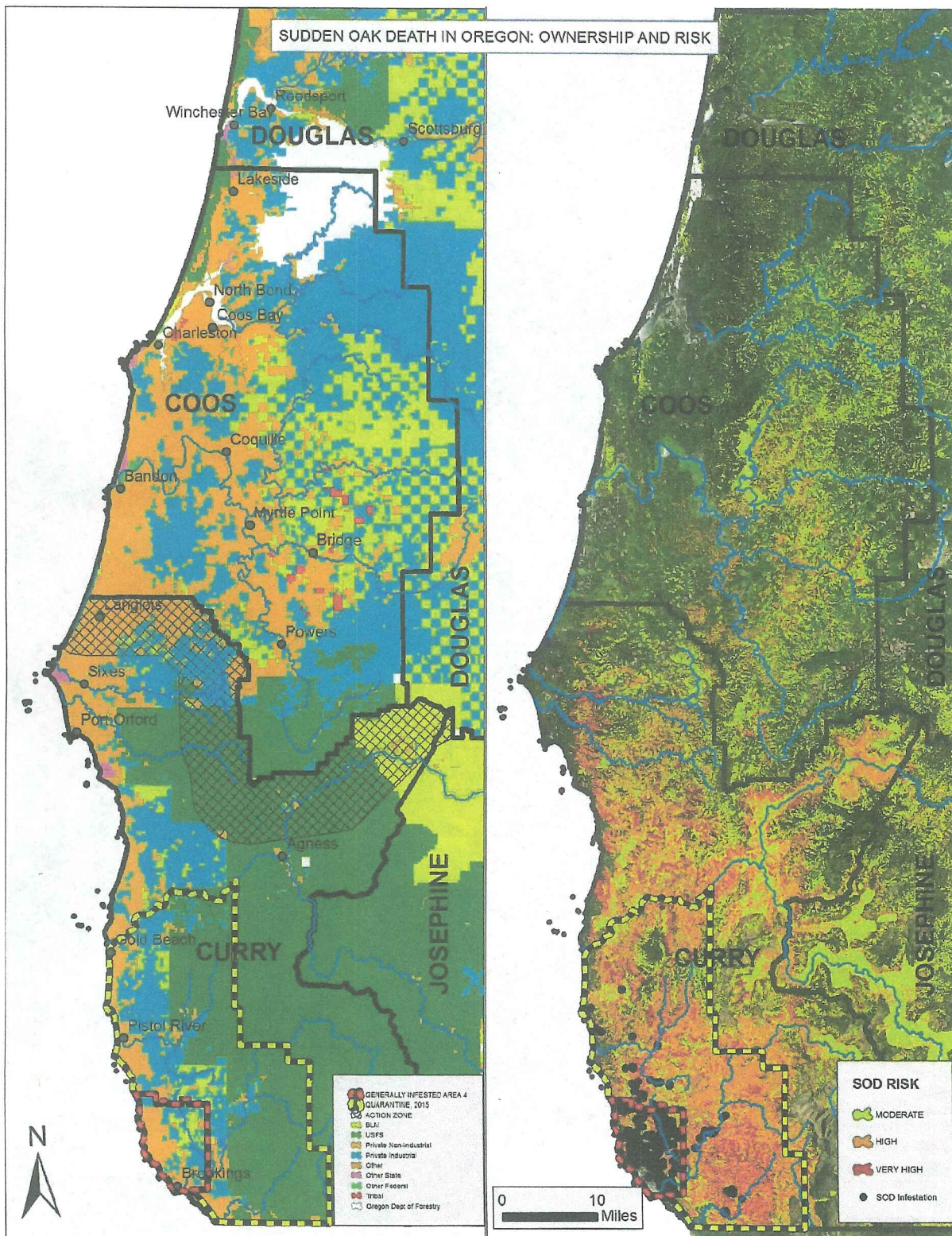


Figure 2. Sudden oak death action zone, major land ownership, and potential distribution in southwestern Oregon.