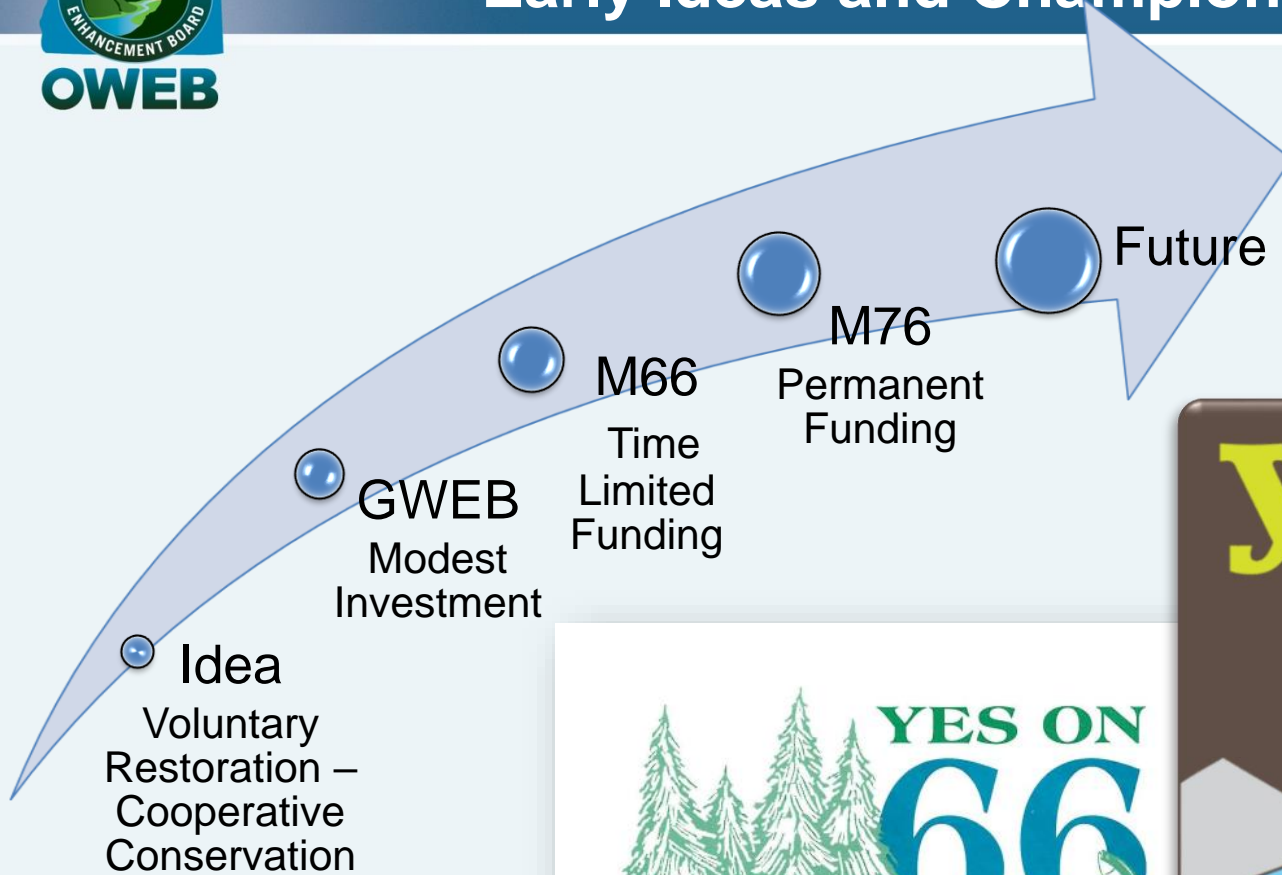


No matter where you live in Oregon,  
you're in a watershed.



# Early Ideas and Champions





# OWEB Mission

To help protect and restore healthy watersheds and natural habitats that support thriving communities and strong economies.



# Strategic Plan Goals

**Adaptive Investment** - Restore and sustain resilient ecosystems through program and project investments that enhance watershed and ecosystem functions and processes and support community needs.

**Local Infrastructure Development** - Support an enduring, high-capacity local infrastructure for conducting watershed and habitat restoration and conservation

**Public Awareness and Involvement** - Provide information to help Oregonians understand the need for and engage in activities that support healthy watersheds

**Partnership Development** - Build and maintain strong partnerships with local, state, tribal and federal agencies, nonprofit organizations and private landowners for watershed and habitat restoration and conservation

**Efficient and Accountable Administration** - Ensure efficient and accountable administration of all investments





## Strategic Plan Update

- Last Strategic Plan developed in 2010
- Update in progress to reflect changes since that time
- Open and transparent process
  - Interviewees with stakeholders
  - External advisory group
  - Listening sessions
- Slated for completion in mid-2018



# Long-Term Investment Strategy

## **Operating Capacity**

OWEB supports the operating costs of effective watershed councils and Soil and Water Conservation Districts

## **Open Solicitation**

OWEB offers responsive grants across the state for competitive proposals based on local ecological priorities

## **Focused Investments**

OWEB helps landscape-scale collaborative partnerships achieve prioritized ecological outcomes

## **Effectiveness Monitoring**

OWEB evaluates and reports on the progress and outcomes of watershed work it supports



## Program Areas

**Grant Program** supports local community organizations to implement, track and monitor science-based projects to restore land, water and fish and wildlife habitat, and provide Oregon jobs

**Operations** supports delivery of grants that support local community organizations



# Program Delivery

## OWEB

- Solicits for grants and completes reviews in partnership with other agencies
- Manages grant program
- Implements effectiveness monitoring programs
- Develops effective partnerships to leverage resources at the regional/state level

## Local Restoration Partners

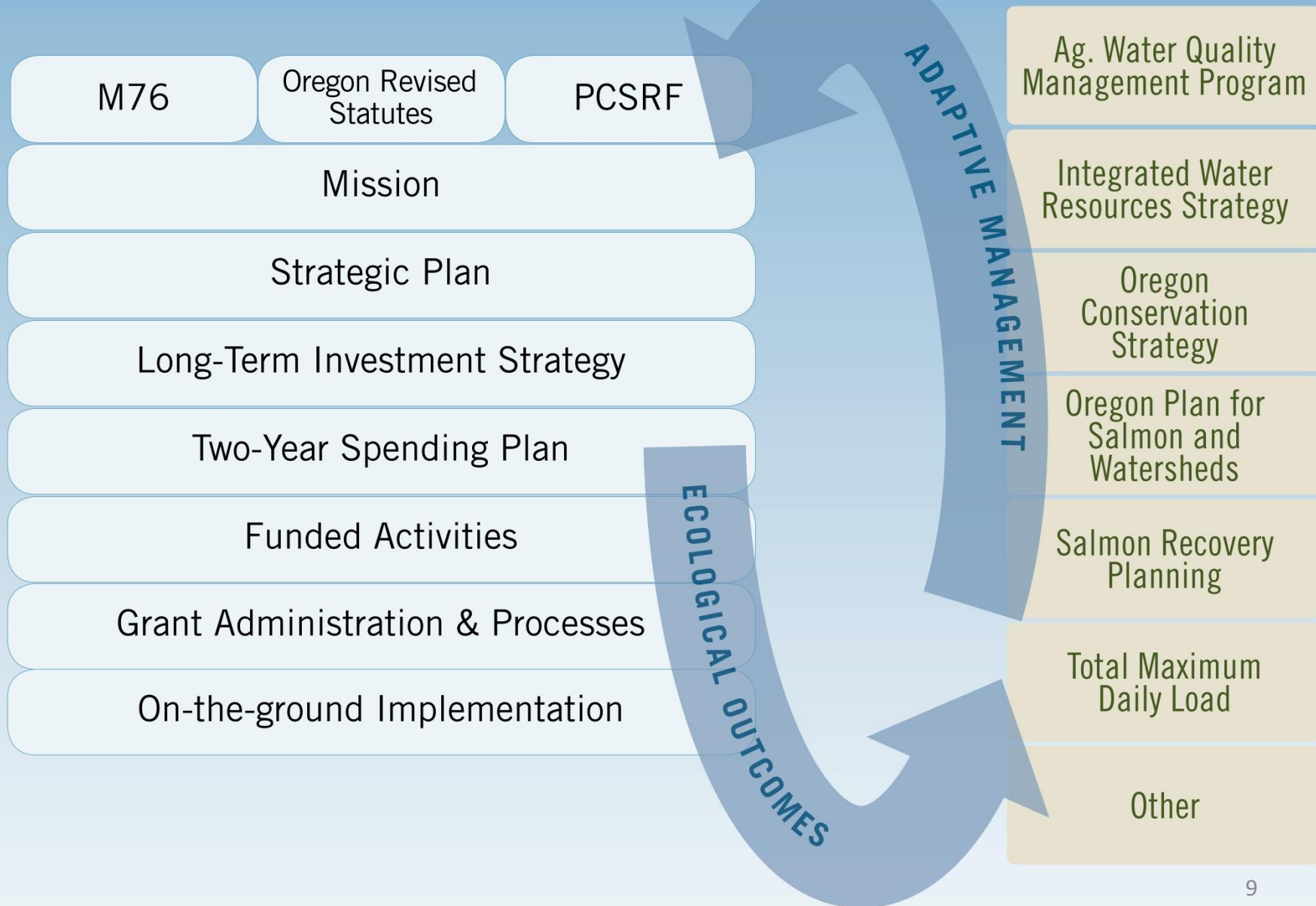
- Implement restoration projects on the ground
- Provide outreach
- Monitor project success
- Develop effective partnerships to leverage resources at the local level

## Landowners and Communities

- Commit to voluntary conservation work on their land
- Invest in the local restoration economy



# Elevations of Influence





## Spending Plan

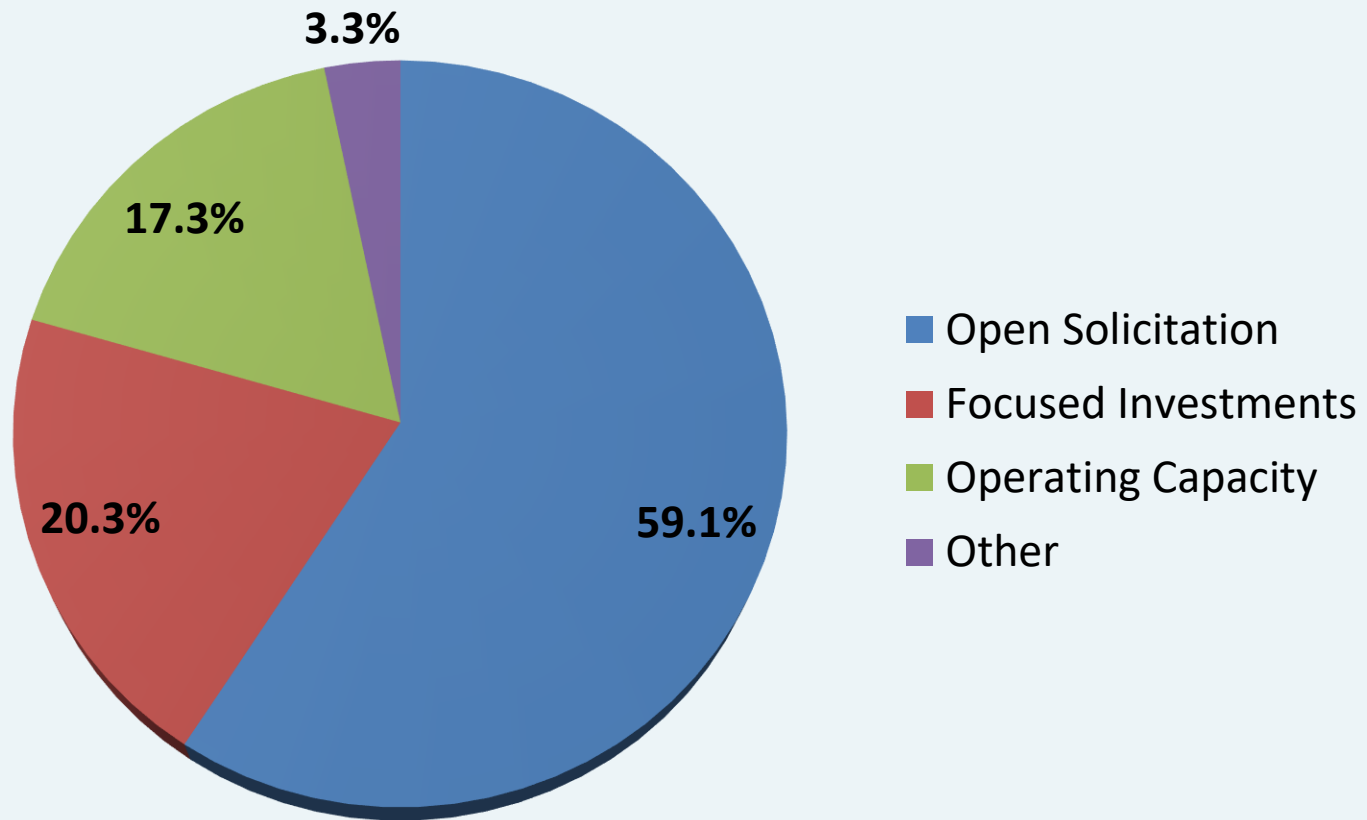
OWEB's Board **oversees grant investments** through a **spending plan** approved each biennium and updated as additional funds become available or forecasts change

**OWEB 2015-17 Spending Plan for the January 2017 Board Meeting**

<b>OWEB SPENDING PLAN</b>	<b>Jan 2017 additions to spending plan</b>	<b>Jan 2017 Spending Plan</b>	<b>TOTAL Board Awards To-Date</b>	<b>Remaining Spending Plan as of Oct 2016 awards</b>	<b>Jan 2017 Proposed Board Awards</b>	<b>Remaining Spending Plan as of Jan 2017</b>
<b>Open Solicitation:</b>						
Restoration**		25.207	18.796	6.411		6.411
Technical Assistance						
Restoration TA**		3.060	2.224	0.836		0.836
CREP TA		1.050	1.050	0.000		0.000
Monitoring grants**		2.120	0.971	1.149		1.149
Outreach**		0.600	0.310	0.290		0.290
Land and Water Acquisition**		7.500	2.343	5.157		5.157
Weed Grants		2.500	2.500	0.000		0.000
Small Grants		2.800	2.800	0.000		0.000
Programmatic Effectiveness Monitoring		0.500	0.213	0.287		0.287
<b>TOTAL</b>	<b>0.000</b>	<b>45.337</b>	<b>31.207</b>	<b>14.130</b>	<b>0.000</b>	<b>14.130</b>
<b>% of assumed Total Budget</b>		<b>59.13%</b>				
**if more funding becomes available, will go to these areas						
<b>Focused Investments:</b>						
Implementation FIPs		14.058	14.058	0.000		0.000
Capacity-Building FIPs		1.039	1.039	0.000		0.000
FI Effectiveness Monitoring		0.500	0.200	0.300		0.300
<b>TOTAL</b>		<b>15.597</b>	<b>15.297</b>	<b>0.300</b>	<b>0.000</b>	<b>0.300</b>
<b>% of assumed Total Budget</b>		<b>20.34%</b>				
<b>Operating Capacity:</b>						
Capacity grants (WC/SWCD)		12.500	12.500	0.000		0.000
Statewide organization partnership support		0.334	0.300	0.034	0.034	0.000
Building Capacity Grants		0.400	0.400	0.000		0.000
<b>TOTAL</b>	<b>0.000</b>	<b>13.234</b>	<b>13.200</b>	<b>0.034</b>	<b>0.034</b>	<b>0.000</b>
<b>% of assumed Total Budget</b>		<b>17.26%</b>				
<b>Other:</b>						
CREP		0.500	0.500	0.000		0.000
Oregon Plan/Governor Priorities		1.000	1.000	0.000		0.000
Strategic Implementation Area's		1.000	1.000	0.000		0.000
<b>TOTAL</b>	<b>0.000</b>	<b>2.500</b>	<b>2.500</b>	<b>0.000</b>	<b>0.000</b>	<b>0.000</b>
<b>% of assumed Total Budget</b>		<b>3.26%</b>				
<b>TOTAL OWEB Spending Plan</b>	<b>0.000</b>	<b>76.668</b>	<b>62.204</b>	<b>14.464</b>	<b>0.034</b>	<b>14.430</b>
<b>OTHER DISTRIBUTED FUNDS IN ADDITION TO SPENDING PLAN DISTRIBUTION</b>						
Oregon Department of Fish and Wildlife - PCSRF		9.512	9.512	0.000		0.000
Forest Health Collaboratives from ODF		0.660	0.500	0.160		0.160
Rangeland Fire Protection Assoc from ODF		1.200	1.200	0.000		0.000
PSMFC-IMW		0.591	0.591	0.000		0.000
Lower Columbia Estuary Partnership		0.300	0.300	0.000		0.000
ODOT	0.250	0.500	0.250	0.250		0.250
<b>TOTAL</b>	<b>0.250</b>	<b>12.763</b>	<b>12.353</b>	<b>0.410</b>	<b>0.000</b>	<b>0.410</b>

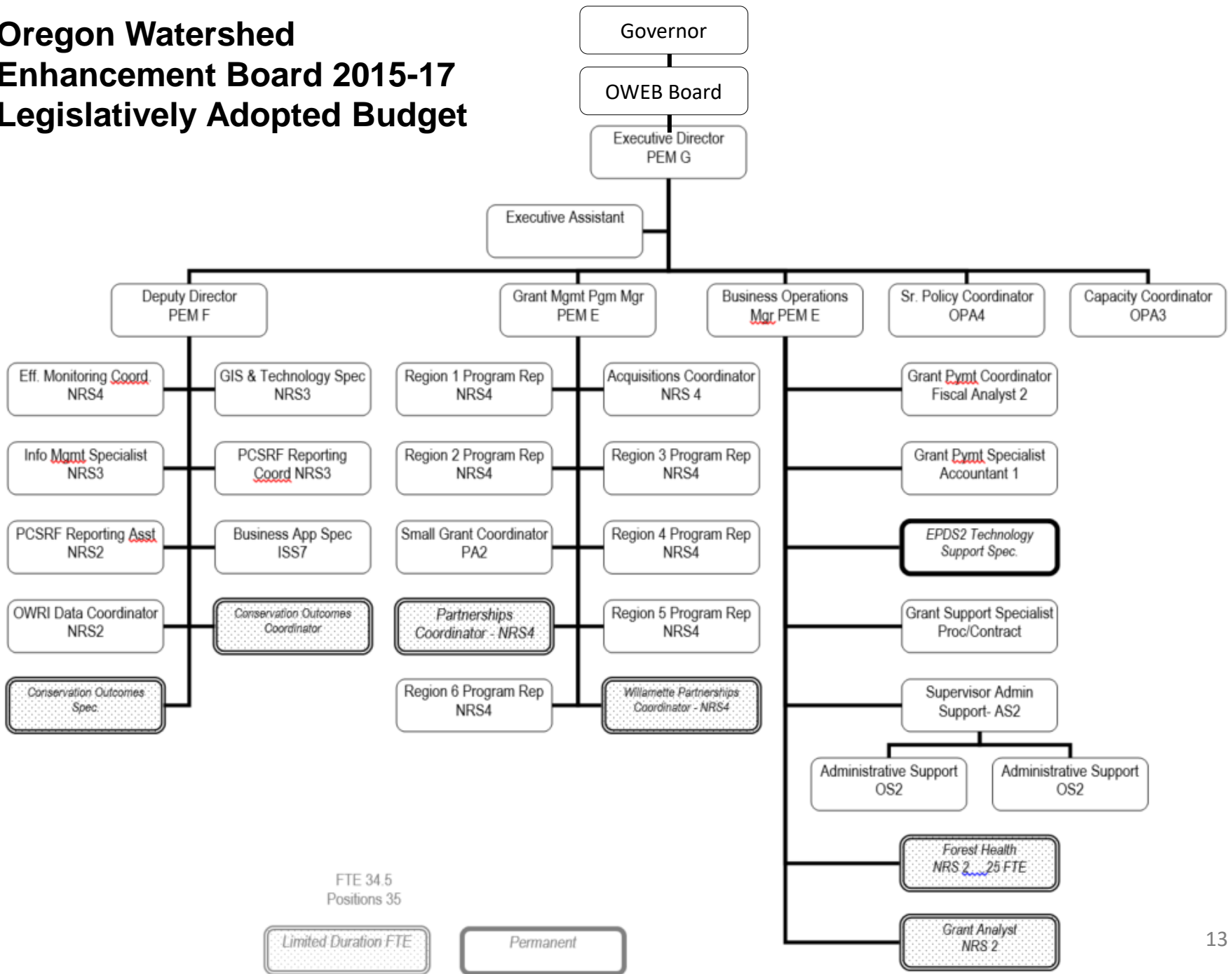


## 2015-2017 Spending Plan Allocations



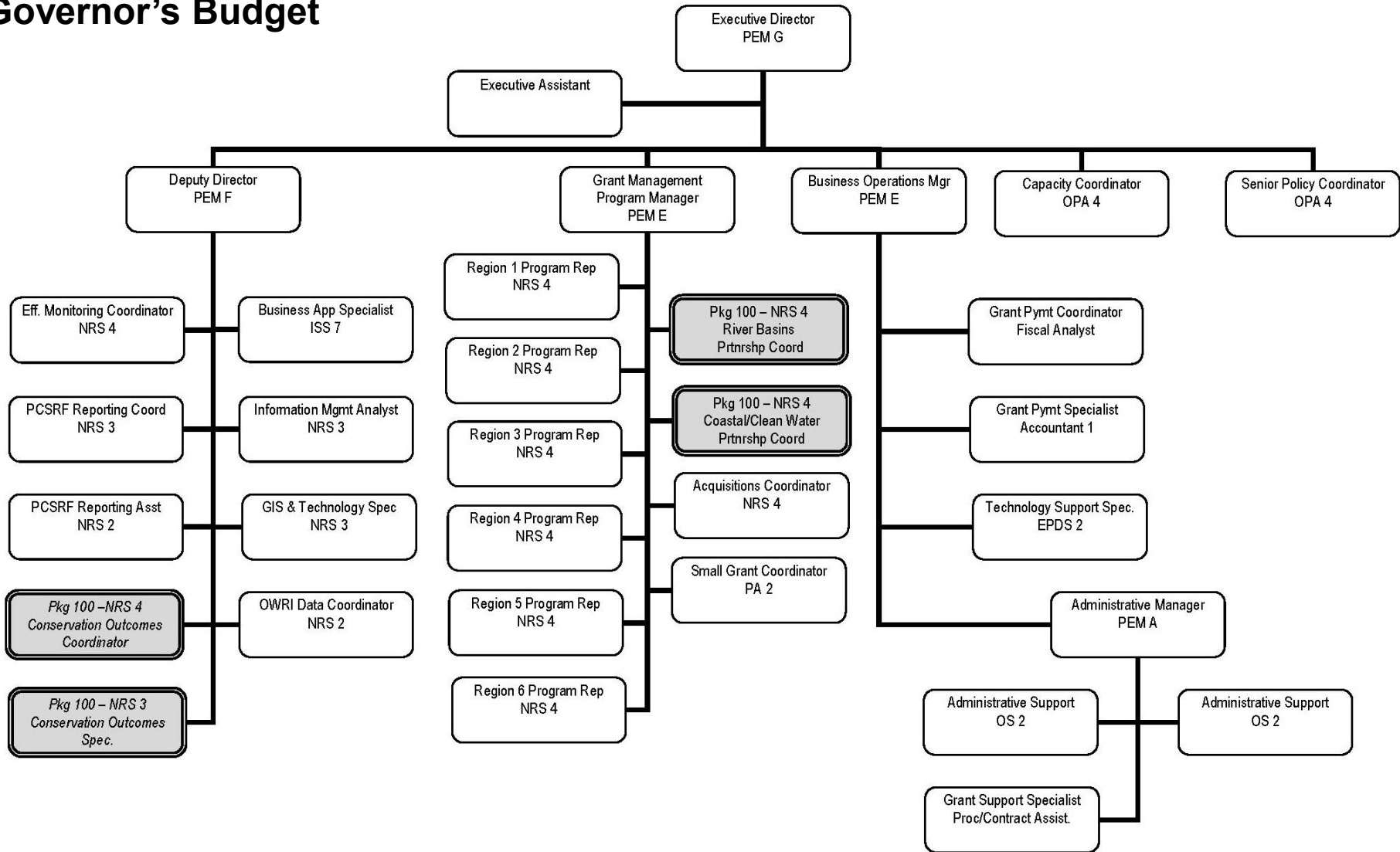
Monitoring is foundational to all of these investment categories.

# Oregon Watershed Enhancement Board 2015-17 Legislatively Adopted Budget



# Oregon Watershed Enhancement Board 2017-19

## Governor's Budget



Permanent

Limited Duration FTE

32.99 - FTE  
33.0 - Positions





## OWEB AVERAGE COST PER FTE

	2015-17 LAB Total Funds	2017-19 GB Total Funds
Salary/Wages	4,687,756	4,829,088
Health Benefits	1,037,952	1,100,088
PERS & Pension Obligation	1,001,694	963,929
All other personnel costs	352,379	342,472
<b>TOTAL PERSONAL SERVICES</b>	<b>7,079,781</b>	<b>7,235,577</b>
FTE	34.25	32.99
Average Cost per FTE	206,709	219,326
Percentage of Total Budget	7%	6%
Total budget	103,309,893	117,750,643



## OWEB AVERAGE FTE Costs on an Annual Basis with NO OPE

	2015-17 LAB Total Funds	2017-19 GB Total Funds
Salary/Wages (no OPE)	2,343,878	2,414,544
FTE	34.25	32.99
Annual Average Cost per FTE	68,434	73,190



# Agency Caseload

Currently...

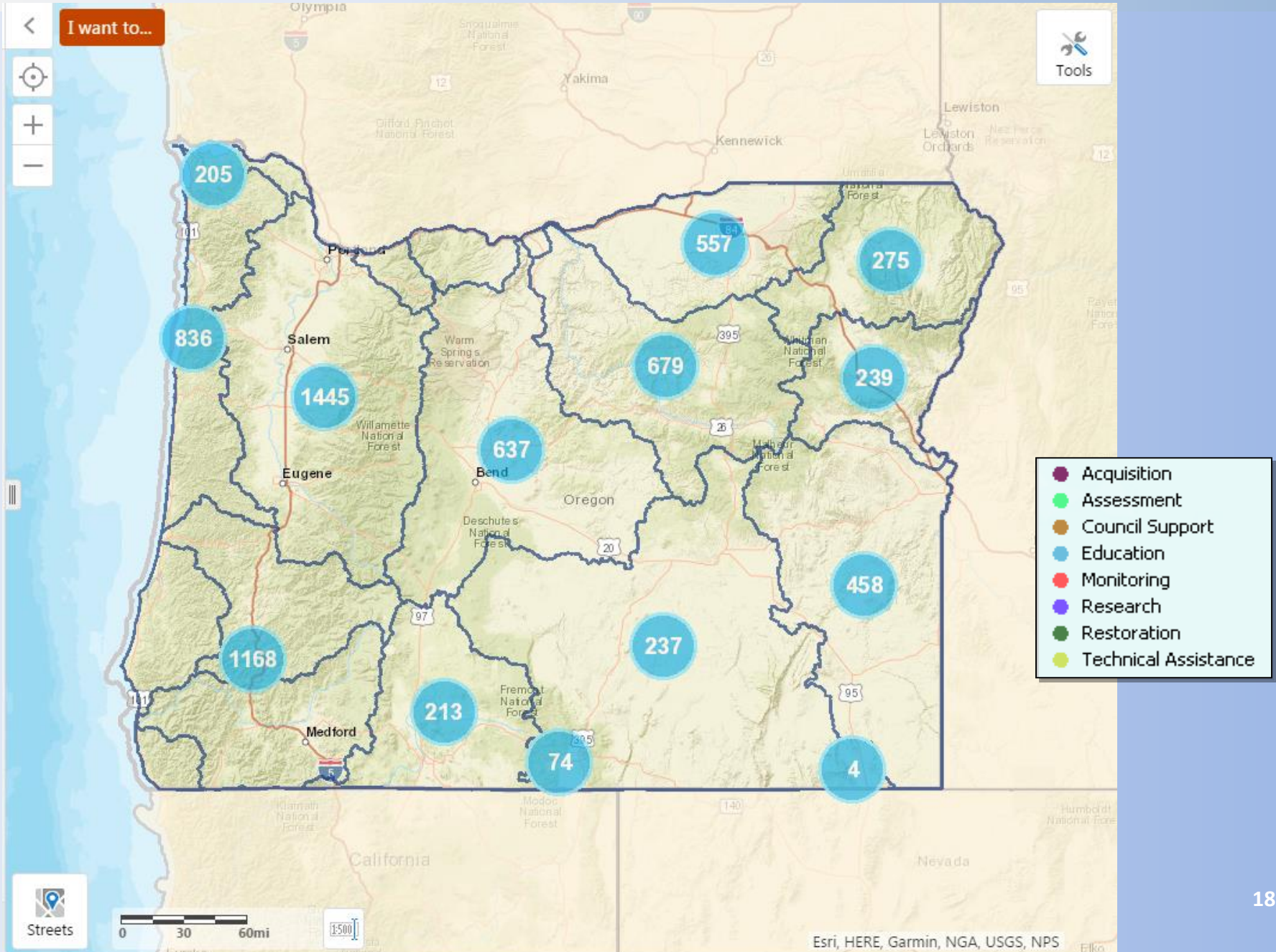
...1,103 open grant agreements with a balance of over \$58 million

...1,354 combined applications reviewed and grant agreements executed in this biennium\*

... Applications received total \$62.8 million in requests to date\*

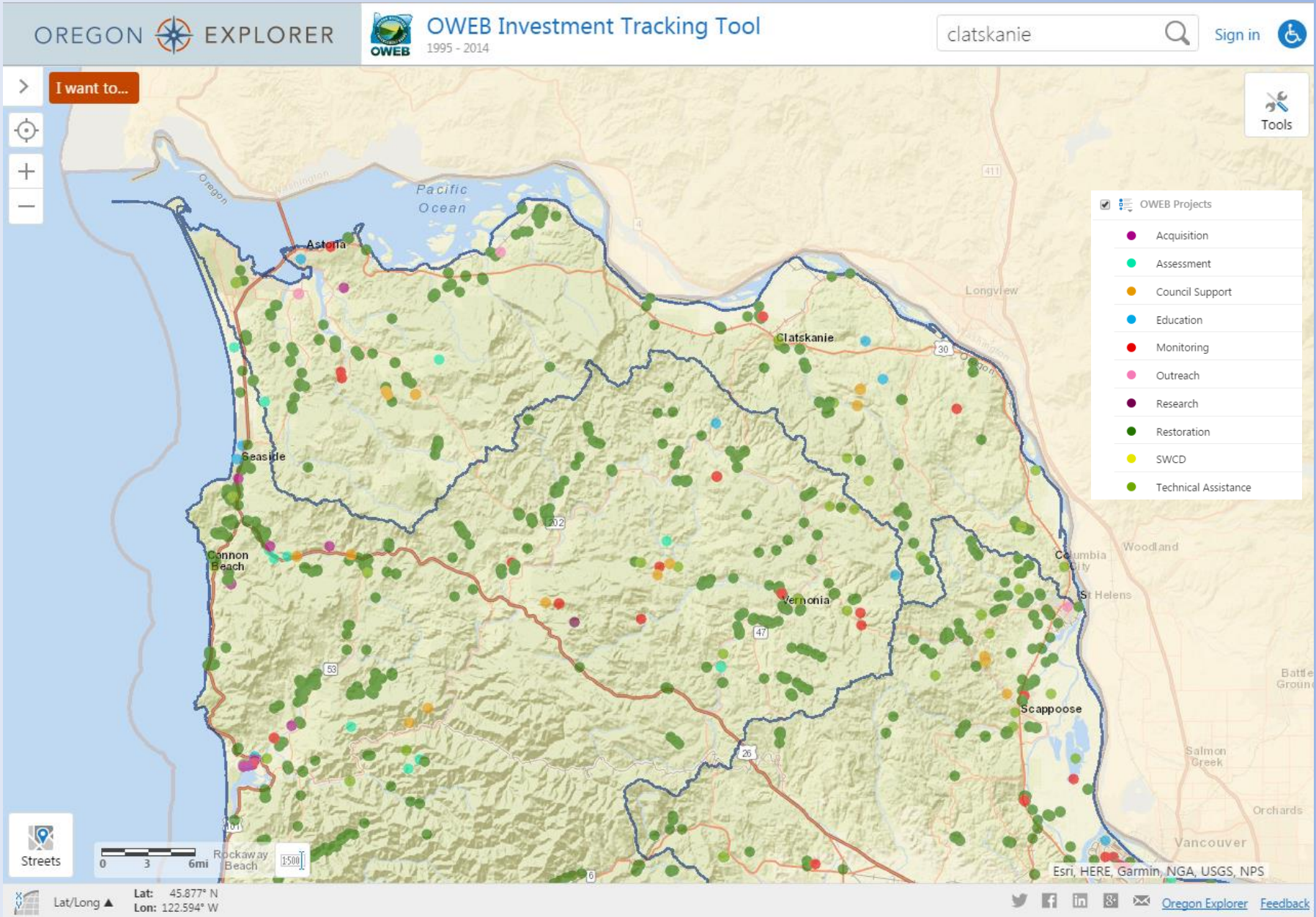
\* With three of four grant cycles completed for the biennium

# OWEB Grant Investments – 1999-2014

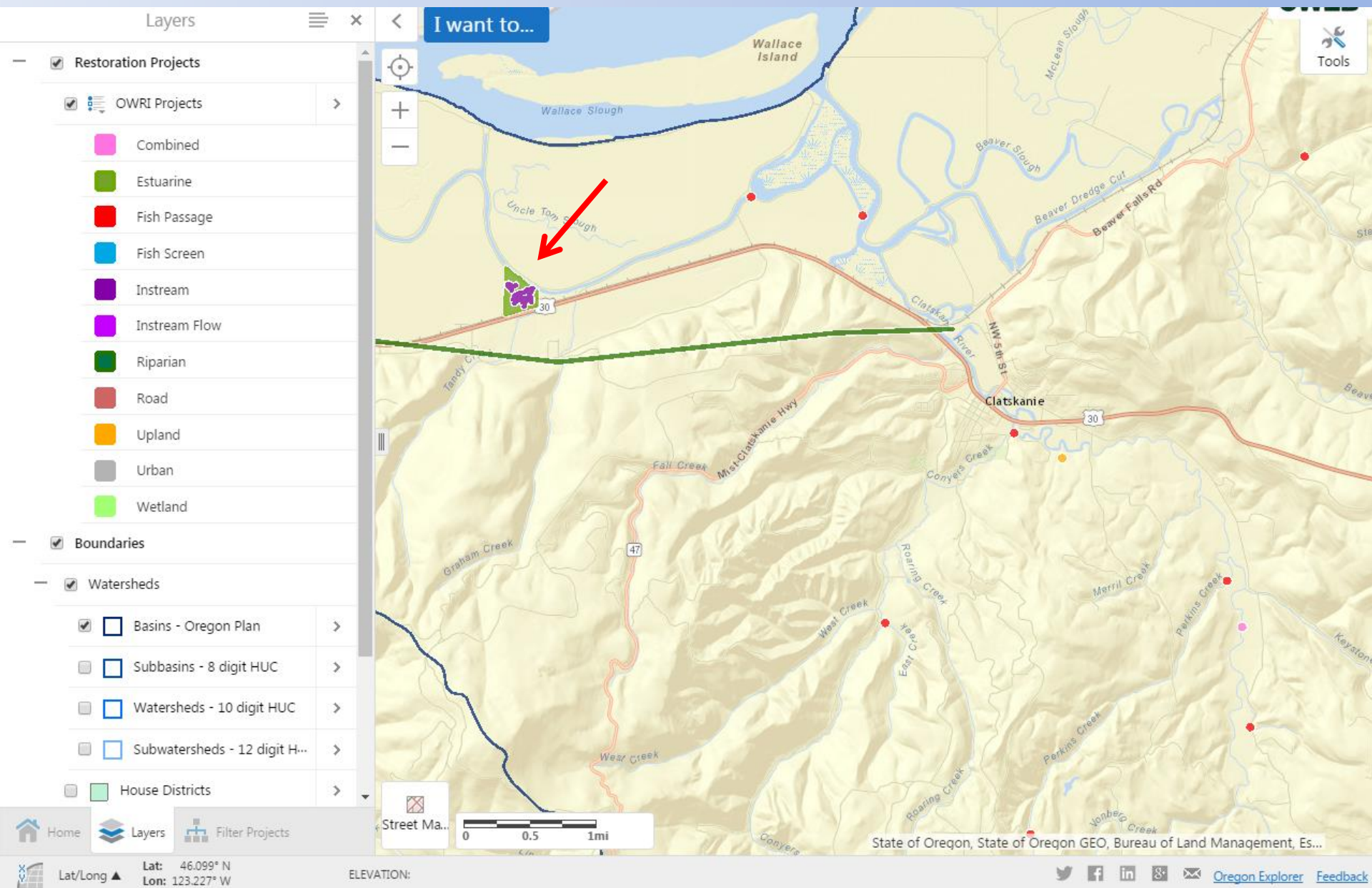




# OWEB Grant Investments – 1999-2014



# OWEB Grant Investments – 1999-2014





Layers



I want to...

Restoration Projects

OWRI Projects

- Combined
- Estuarine
- Fish Passage
- Fish Screen
- Instream
- Instream Flow
- Riparian
- Road
- Upland
- Urban
- Wetland

Boundaries

Watersheds

- Basins - Oregon Plan
- Subbasins - 8 digit HUC
- Watersheds - 10 digit HUC
- Subwatersheds - 12 digit H...
- House Districts



Project: Louisiana Swamp Tid 1 of 2

Project: Louisiana Swamp Tidal Reconnection (20140118)

**Activity Type:** Estuarine  
**Stream:** Westport Slough  
**Subbasin:** Lower Columbia-Clatskanie  
**Tributary of:** Columbia R  
**Start / Complete Dates:** 2013 / 2014  
**Total Cash:** \$447,585  
**Total Inkind:** \$1,800  
**Application #:** 214-1000-10437

Project Activities

Instream habitat enhancement: Large wood placed, Side channels created / excavated; Estuarine invasive plant control, Estuarine restoration, Estuarine vegetation planting

Project: Louisiana Swamp Tid 2 of 2

Project: Louisiana Swamp Tidal Reconnection (20140118)

[Detailed Report](#) [Printable Report](#)

**Activity Type:** instream  
**Stream:** Westport Slough  
**Subbasin:** Lower Columbia-Clatskanie  
**Tributary of:** Columbia R  
**Start / Complete Dates:** 2013 / 2014  
**Total Cash:** \$447,585  
**Total Inkind:** \$1,800  
**Application #:** 214-1000-10437

Project Activities

Instream habitat enhancement: Large wood placed, Side channels created / excavated; Estuarine invasive plant control

Street Ma... 0 0.2 0.4mi

State of Oregon, State of Oregon GEO, Bureau of Land Management, Es...

Home Layers Filter Projects

Lat/Long ▲ Lat: 46.120° N Lon: 123.299° W

ELEVATION:

Oregon Explorer Feedback



## Key Performances Measures (KPMs)

2015-2016 – Evaluated the need to update OWEB’s KPMs to better measure the agency’s performance.

Proposed revised KPMs address:

- Internal measures focused on grant-making processes, and
- External measures focused on the results of OWEB’s investments



# 2015-2017 Key Performance Measures

## Current KPMs

Operations	Plant Communities
Outside Funding	Work Plans
Restoration	Fish Monitoring
Payments	Salmon Habitat Quantity
Fish Populations	Customer Service



# Summary of 2016 KPM Results

## 2016 Performance Summary



Green	40%
Yellow	10%
Red	50%

**Green**  
= Target to -5%

**Yellow**  
= Target -6% to -15%

**Red**  
= Target > -15%



## Proposed Revised KPMs

Current KPM	Action	Proposed KPM	Rationale
Investments that address restoration priorities	Revise	Funding that addresses habitat for listed native species or 303(d) water-quality listings	Directly connects to OWEB's mission, as outlined in the Oregon Constitution and statutes

2016 APPR: Red (no data)



## Proposed Revised KPMs

Current KPM	Action	Proposed KPM	Rationale
Potential salmon habitat made available	Revise	Fish habitat opened by fish-passage projects funded through OWEB grants	Measures progress associated directly with OWEB's investments

2016 APPR: Red





# Proposed Revised KPMs

Current KPM	Action	Proposed KPM	Rationale
	Add	Upland habitat restored through OWEB funded grants	Measures progress associated directly with OWEB's investments



## Proposed Revised KPMs

Current KPM	Action	Proposed KPM	Rationale
Improved riparian stream miles	Revise	Riparian stream miles restored through OWEB funded grants	Measures progress associated directly with OWEB's investments

2016 APPR: Red



# Proposed Revised KPMs

Current KPM	Action	Proposed KPM	Rationale
Fish species with increasing or stable abundance	No action		

2016 APPR: Yellow



## Proposed Revised KPMs

Current KPM	Action	Proposed KPM	Rationale
	Add	Percent of Oregon's 76 'sub-basins' that benefit from OWEB grants	Tracks distribution of OWEB's investments



# Proposed Revised KPMs

Current KPM	Action	Proposed KPM	Rationale
Watershed councils accomplishing work plans	Revise	Watershed councils demonstrating effective organizational governance and management using OWEB merit criteria	Connects directly to administrative rules guiding OWEB's council capacity investments

2016 APPR: Red (no data)



# Proposed Revised KPMs

Current KPM	Action	Proposed KPM	Rationale
Customer Service	No action		

2016 APPR: Green





## Proposed Revised KPMs

Current KPM	Action	Proposed KPM	Rationale
Funding used for agency operations	No change to KPM; revise methodology and target		Update both methodology and target to reflect fund distribution process under M76

2016 APPR: Red



# Proposed Revised KPMs

Current KPM	Action	Proposed KPM	Rationale
Complete grant payments within 24 days	No action		

2016 APPR: Green



## Proposed Revised KPMs

Current KPM	Action	Proposed KPM	Rationale
	Add	Open solicitation grant agreements executed within one month of Board award	Tracks efficiency of OWEB's grant-making procedures



# Proposed Revised KPMs

Current KPM	Action	Proposed KPM	Rationale
Funding from other sources resulting from OWEB's grant awards	Revise	Funding contributed from other sources to OWEB funded restoration projects	More accurately measures leveraged contributions from other sources, based on information about the completed project

2016 APPR: Green



## Proposed Revised KPMs

Current KPM	Action	Proposed KPM	Rationale
Native fish monitored to an adequate level	Delete		No longer reflects funding distribution for monitoring under M76

2016 APPR: Green





# 2017-2019 Proposed Revised KPMs

Proposed Revised KPMs	
Native Species Habitat and Water Quality	Native Fish Habitat Quantity
Upland Habitat	Streamside Habitat
Fish Populations	Grant-Making Across Oregon
Watershed Council Governance	Customer Service
Operations	Payments
Timeliness of Grant-Making	Funding from Other Sources



# Budget Drivers & Environmental Factors

## Fund Sources

- Lottery Fund revenue projections
- Competitive Grant Process for federal funds
- Limitations on use of funds

## Investment in new granting programs that support native species and thriving communities

- Focused Investment Partnerships
- Strategic Implementation Areas

→ KPMs: Fish habitat miles; Upland habitat acres; Riparian habitat miles

## Granting Efficiency

- 1,100 open grants
- 9.6% administration for grant program delivery
- Reliance on other agencies to provide technical support (M76 funds)

→ KPMs: Agency operations costs; Executed grant agreements; Customer Service



# Major Changes in the Last Six Years

## 2011-2013

- Implementation of Measure 76 Statutes
- Board Adoption of Long-Term Investment Strategy
- Changes to Federal Grant eligibility requirements

## 2013-2015

- Revised Administrative Rules for Council Capacity
- Priority Setting for Focused Investment Partnerships

## 2015-2017

- Agency Reorganization
- First Focused Investment Partnership Awards
- Release of Online Grant Application System
- Measuring Our Mission



# Containing Costs and Improving Services



# Cross-Agency Approach

## **Board Structure**

Public Members, Tribal, other agency commission members, federal agencies and OSU Extension

## **Funding to Support Voluntary Local Restoration**

M76 funding supports other agency staff to implement M76

## **Grant Review Team Structure**

Other agency staff participate on regional review teams

## **Staff Coordination with Other Agencies**

Engage with other agencies in planning and implementation

## **Conservation Effectiveness Partnership and Clean Water Partnership**

Outcome-based Monitoring

## **Shared Services (WRD, Housing, DSL, DLCD)**

Administrative functions (e.g., payroll, accounting, HR, IT, Internet)





# Internal Efficiencies

## Continuous Improvement

Staff-led approach to ensure adaptive, human-centered, and high-performance service

✓ **Example: Agency Reorganization in 2015**

Restructured agency to organize similar functions to increase efficiency, encourage cross-section coordination and collaboration

✓ **Example: Technology/Web-Based Improvements**

Launched in 2016; dramatically streamlines OWEB's grant solicitation, review and grant-making processes

*One result: reduced paper use by agency in one year from 9.4 million to 2 million sheets of paper – 370% reduction*



# Efficient Grant Delivery Services

## **Oregon Department of Agriculture**

Soil and Water Conservation District Capacity Grants

Weed Grant Program

Strategic Implementation Areas Initiative

## **Oregon Department of Forestry**

Forest Health Collaborative Grants

## **US Department of Agriculture**

Conservation Reserve Enhancement Program

## **NOAA-Fisheries**

Pacific Coast Salmon Recovery Funding

## **US Fish and Wildlife Service**

Coastal Wetland Grants

## **Oregon Coastal Management Program**

Grants and Reporting to Complement DLCD Program



# What We've Learned

High performing partnerships  
+  
Strategic Action Plans  
+  
Targeted ecological outcomes  
=  
**Landscape-scale results**



# Strong Partnerships

Partnership	2015-2017 OWEB Award Amount	Est. OWEB Funding Request 2017-2019	Est. OWEB Funding Request 2019-2021	Total FIP Request	Total Est. Leverage
The Deschutes Partnership	\$4,000,000	\$4,000,000	\$4,000,000	\$12,000,000	\$16,203,000
Willamette Mainstem Anchor Habitat Working Group	\$2,550,000	\$2,430,000	\$2,180,000	\$7,160,000	\$7,060,000
Harney Basin Wetlands Initiative	\$1,780,000	\$1,970,000	\$2,500,000	\$6,250,000	\$10,270,000
Oregon Model to Protect Sage Grouse, All Counties	\$2,295,938	\$2,355,250	\$473,732	\$5,124,920	\$2,276,500
Ashland Forest All-lands Restoration	\$1,660,000	\$2,340,000	\$2,000,000	\$6,000,000	\$7,200,000
Upper Grande Ronde Initiative	\$1,771,610	\$2,416,500	\$2,777,000	\$6,965,110	\$44,979,000
<b>TOTAL</b>	<b>\$14,057,548</b>	<b>\$15,511,750</b>	<b>\$13,930,732</b>	<b>\$43,500,030</b>	<b>\$87,988,500</b>



# Strong Partnerships

## Capacity Building FIPs – Strategic Action Planning and Partnership Development

- Siuslaw Coho
- John Day Basin
- Wild Rivers Coast Estuaries
- Umpqua Basin
- Clackamas
- Central Coast Estuaries
- Willowa Fish Habitat
- Rogue Basin

## Coast Coho Business Plans

- Targets recovery efforts for both of Oregon's federally listed coast coho species
- Federal, state, and local partners
- Science-based watershed restoration plans
- Aims to accelerate the pace and effectiveness of local habitat protection and restoration efforts.



# Key Policy Option Packages

**100 Program Continuity** – requests continuation of four positions (2 permanent for focused investment partnerships and 2 limited duration for conservation outcomes), plus office rent for North Coast regional office

**115 Forest Collaborative Support** – requests staff support for forest collaboratives grantmaking administered on behalf of Oregon Department of Forestry.

**200 Measure 76** – Grant Funds

**215 Forest Collaboratives** – Grant Funds

## KPMs for Restoration

### Outputs and Outcomes:

- Fish habitat miles
- Riparian habitat miles
- Upland acres
- Fish species abundance



# Potential Budget Adjustments

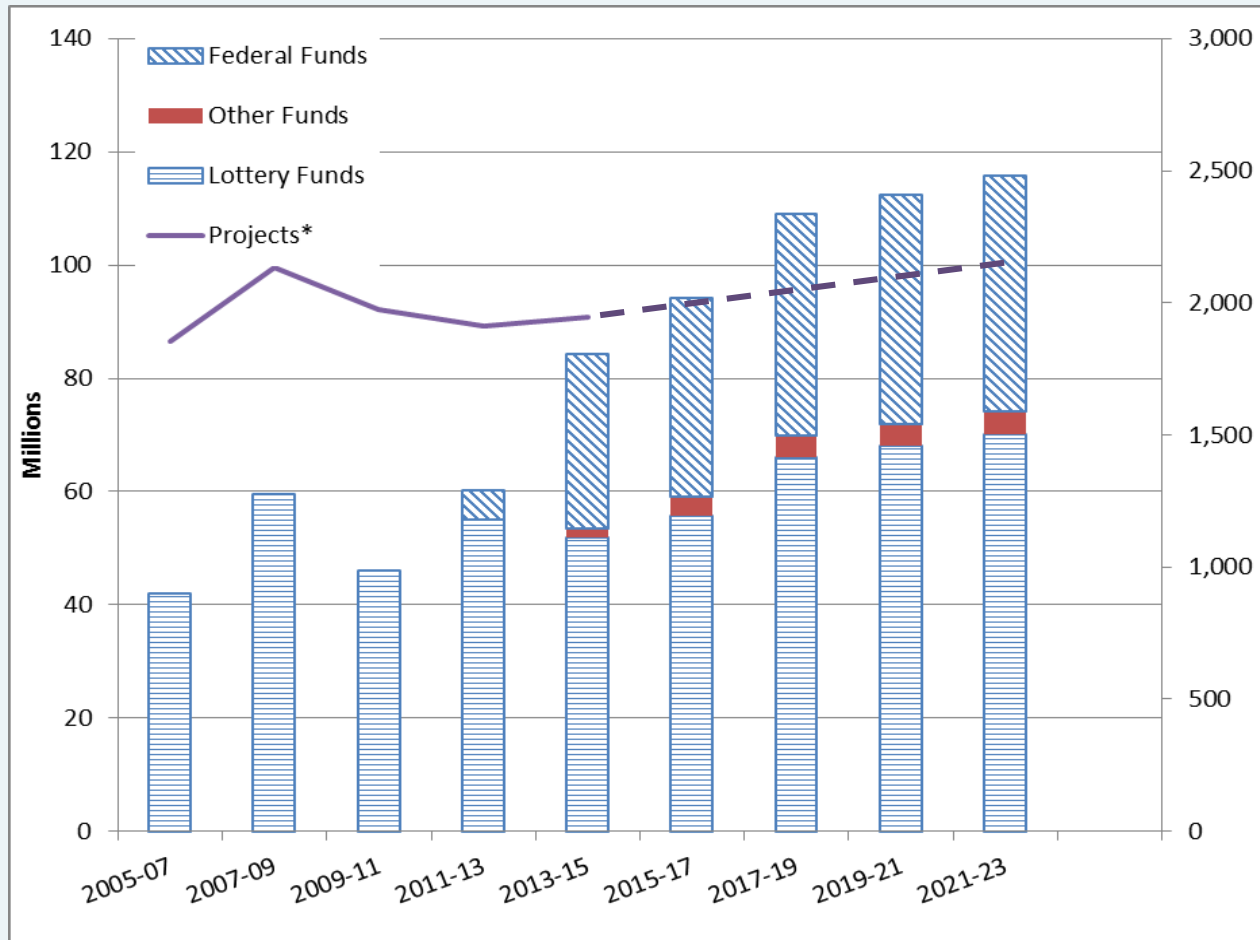
## Federal Funds Limitation

Agency will work with LFO to determine if there is a need for additional Federal Funds Limitation for *National Coastal Wetlands Conservation Grants* during the 2017-2019 biennium.





# Agency Changes



\*Applications Reviewed and agreements executed



## Legislation Affecting OWEB

### HB 2327 – Agency bill

- US Fish and Wildlife Service as non-voting member
- Liability coverage requirements for grantees
- Statute clean-up, including repeal of requirements for:
  - OWEB as central agency repository of written reports
  - Reporting on habitat conditions in a geographically consistent way across all drainage basins in Oregon

Passed House on 3/1/17; Public hearing in Senate on 3/15/17; very minor budget impact



# How Proposed Budget Impacts Goals

Strategic Plan	Long-Term Investment Strategy (LTIS)	Budget Proposal
Adaptive Investment	Effectiveness Monitoring Open Solicitation Focused Investments	<ul style="list-style-type: none"> <li>- Coordinated monitoring of outcomes</li> <li>- Continued grant offerings that support thriving communities (Forest Health, Strategic Implementation Areas)</li> <li>- Restoration investment at scale</li> </ul>
Local Infrastructure Development	Operating Capacity	<ul style="list-style-type: none"> <li>- Continued support for Forest Health Collaboratives</li> </ul>
Partnership Development	Focused Investments	<ul style="list-style-type: none"> <li>- Continued partnership coordination</li> </ul>
Efficient and Accountable Administration	All areas of LTIS	<ul style="list-style-type: none"> <li>- Continued support for effective and transparent granting</li> </ul>



# Our Approach to Measuring Performance

## MEASURING OUR MISSION

### Measuring Mission Progress and Measuring Mission Impact

Go to Prezi presentation at

[http://prezi.com/4md5icxwpdwv/?utm\\_campaign=share&utm\\_medium=copy](http://prezi.com/4md5icxwpdwv/?utm_campaign=share&utm_medium=copy)





MEASURING MISSION IMPACT

**MEASURING OUR MISSION**

*To help protect & restore healthy watersheds & natural habitats that support thriving communities & strong economies.*

MEASURING MISSION PROGRESS



## MEASURING OUR MISSION

*To help protect & restore healthy watersheds & natural habitats that support thriving communities & strong economies.*

MEASURING MISSION PROGRESS

### Staff, Contracts & Technology

- Technological Efficiencies
- Training for staff and grantees
- Process Streamlining
- Continuous Improvement

### Review Team Effectiveness

- Time spent reviewing each application
- Evaluation summary consistency

### Key Performance Measures - Agency Effectiveness and Efficiency

- Customer Service
- % funding for operations
- Grant payment efficiency
- Grant agreement efficiency

### Continuous Improvement Tracking

- Paper cost reductions
- # of application 'touches'
- % applications complete when submitted
- Paperwork processed within X days



# Staff, Contracts & Technology

- Technological Efficiencies
- Training for staff and grantees
- Process Streamlining
- Continuous Improvement

# Key Performance Measures - Agency Effectiveness and Efficiency

- Customer Service
- % funding for operations
- Grant payment efficiency
- Grant agreement efficiency

- P
- #
- %
- W
- F

## Continuous Improvement Tracking

- Paper cost reductions
- # of application 'touches'
- % applications complete when submitted
- Paperwork processed within X days

- Time each
- Evalu cons

# Review Team Effectiveness

- Time spent reviewing each application
- Evaluation summary consistency



# MEASURING MISSION IMPACT

## MEASURING OUR MISSION

To help protect & restore healthy watersheds & natural habitats that support thriving communities & strong economies.

## Completed Grants

- Restoration
- Technical Assistance
- Acquisition
- Capacity
- Outreach
- Monitoring

### Key Performance Measures - Ecological

- Dollars invested to address threatened/endangered species of concern or 303(d) list
- Funds contributed from other sources for restoration projects
- Miles of fish habitat opened
- Acres of upland habitat improved
- Riparian stream miles restored or enhanced
- Improvement in fish species abundance

### Key Performance Measures - Community & Economy

- Percent of Oregon sub-basins that benefit from agency-managed grant program
- Watershed Councils demonstrating effective governance

#### Also...

- 15-24 jobs created for every \$1 million invested in restoration
- Number of grants given and funds distributed

### Project Monitoring

- Monitoring innovative approaches
- Implementation monitoring

### Status/Trend and Accomplishments Reporting

- Reporting for:
- Pacific Coastal Salmon Recovery Fund
  - GR Watersheds Restoration Inventory
  - Focused Investment Partnership Accomplishments
  - Status, trend and baseline monitoring of funded grants

### Effectiveness Monitoring

- Riparian effectiveness monitoring
- Juniper effectiveness monitoring
- Conservation Reserve Enhancement Program Effectiveness
- Livestock exclusion effectiveness
- Impact of capacity investments

Wildfire  
Restoration

# Key Performance Measures - Ecological

- Dollars invested to address threatened/endangered, species of concern or 303(d) list
- Funds contributed from other sources for restoration projects
- Miles of fish habitat opened
- Acres of upland habitat improved
- Riparian stream miles restored or enhanced
- Improvement in fish species abundance

# Key Performance Measures - Community & Economy

- Percent of Oregon sub-basins that benefit from agency-managed grant program
- Watershed Councils demonstrating effective governance

## Also...

- 15-24 jobs created for every \$1 million invested in restoration
- Number of grants given and funds distributed



# Status/Trend and Accomplishments Reporting

Reporting for:

- Pacific Coastal Salmon Recovery Fund
- OR Watershed Restoration Inventory
- Focused Investment Partnership Accomplishments
- Status, trend and baseline monitoring of funded grants

# Project Monitoring

- Monitoring innovative approaches
- Implementation monitoring

# Effectiveness Monitoring

- Riparian effectiveness monitoring
- Juniper effectiveness monitoring
- Conservation Reserve Enhancement Program Effectiveness
- Livestock exclusion effectiveness
- Impact of capacity investments

# Measuring our Mission





**Abundant fish and wildlife**

**Reduced occurrence of catastrophic wildfire**

**Increased employment in restoration**

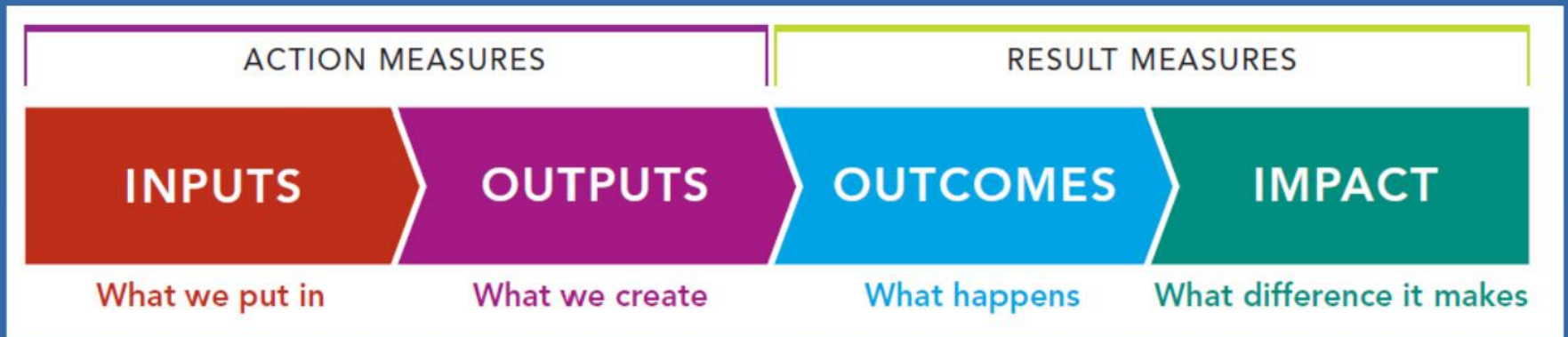
MEASURING MISSION IMPACT

**MEASURING OUR MISSION**

*To help protect & restore healthy watersheds & natural habitats that support thriving communities & strong economies.*

MEASURING MISSION PROGRESS

# A Future Framework Example...



- Grants given
- Funds distributed
- Staff resources
- Technology

- Acres of habitat
- Miles of stream
- Grant agreements

- Habitat quality/ accessibility
- Water quality improvements
- Strong restoration infrastructure
- Jobs created

- Abundant fish/ wildlife
- Fishable, drinkable, swimmable rivers
- Thriving communities



# Measuring our Mission





# Achieving Outcomes

Since 1999, OWEB has invested in more than 8,200 grants (nearly \$510 million) to help landowners and communities...

- Restore more than 4,900 miles of streams
- Make more than 6,000 miles of stream habitat accessible for fish
- Improve or create nearly 50,000 acres of wetlands/estuaries
- Improve the condition of more than 1,097,000 upland acres

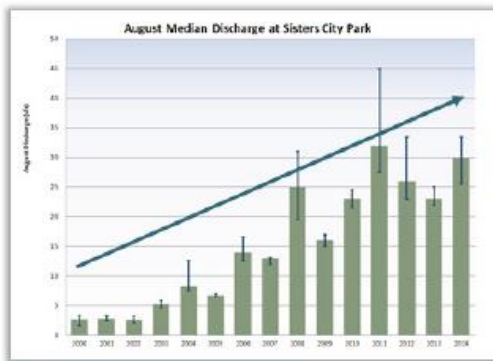
These investments have resulted in...

- an average of 15-24 jobs per \$1 million invested
- 90 cents of every dollar stays in local communities

# Achieving Outcomes

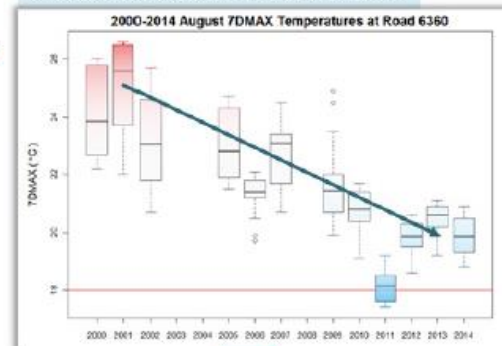
## HIGHLIGHT: Whychus Creek Watershed

Monitoring data allowed partners to describe what measurable ecological outcomes were achieved when restoring streamflow in Whychus Creek.



**Output:**  
*Increased Streamflow*

**Outcome:**  
*Reduced stream temperatures*



**Outcome:**  
*Thriving cold-water bugs!*



**Action:**  
*Streamflow Restoration*





# Achieving Outcomes

**HIGHLIGHT:** Coburg Aggregate Reclamation Project (CARP)



***Recent monitoring shows that cold-water refugia have been created in side-channels and are being used by juvenile Chinook during the hottest period of the summer.***



# Achieving Outcomes



*August 1992*



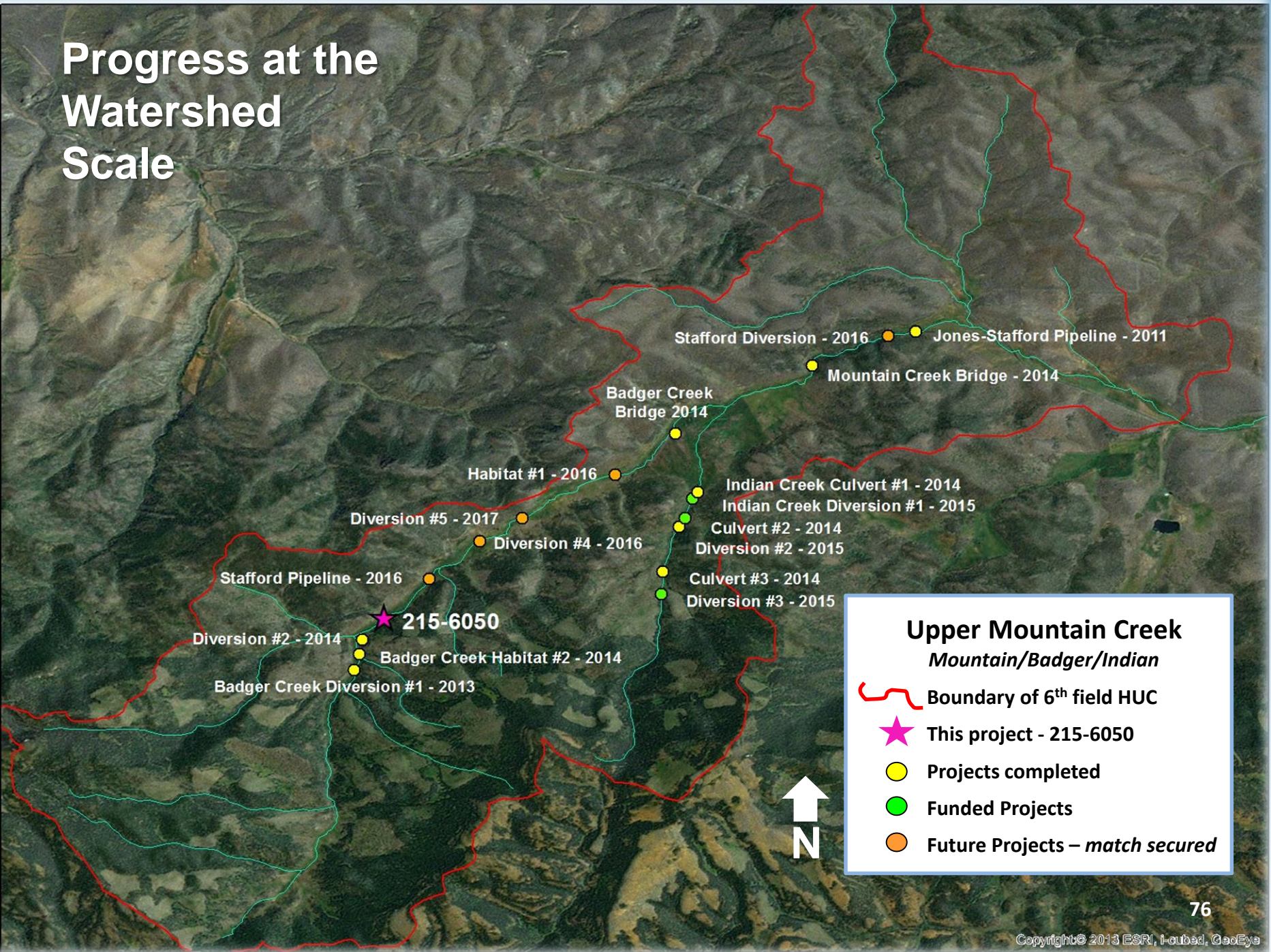
*September 2013*

Riparian plantings = Improvements in streamside condition

Percentage of fine sediments in Fifteenmile Creek and most of its tributaries decreased from 2006 to 2014.



# Progress at the Watershed Scale







# Achieving Outcomes

*From  
this...*



*From this...*



*... to this*



*... to this*







# Thank You

