

RE: SB 929 Oregon Pollinator Protection Act
 DATE: March 31, 2017
 POSITION: SUPPORT
 COMMITTEE: Senate Environment and Natural Resources
 FROM: Krystal R. Abrams and Lisa Arkin, Beyond Toxics

Honorable Chair Dembrow and Members of the Senate Environment and Natural Resources Committee,

Thank you for holding the hearing on SB 929 on March 27. We are writing to correct misleading information that was provided in testimony by bill opponents. **The topic we are addressing is the “Bee Box.”**

The “Bee Box” was suggested as a “solution” to the risk to bees posed by general consumers buying and using neonicotinoid pesticides on home gardens and lawns. The Committee members were told that the “Bee Box” serves as a graphic illustration that a neonicotinoid product is harmful to bees. Committee members were also told that pesticide labels are easy to read and contain clear and unambiguous information about protecting bees for general consumers. The implication was that consumers are well prepared to use these products. Not so.

These statements are not accurate for the following reasons:

1. Many of the most popular neonicotinoid products labels do not have the “Bee Box” on the front page of the label;
2. All labels are written in tiny font sizes and the verbiage is difficult to decipher;
3. Many products labels do not even mention “toxic to bees” or “extremely toxic to wildlife, aquatic insects, fish, bees” until page 3 or more. This is misleading and ambiguous labeling.

Attached to this document are the 6 products labels summarized in the chart below. Check them out – how easily can you find the information about harm to bees, beneficial insects, aquatic organisms and humans? As you will find, this information is often buried within the multiple label. The US EPA is not likely to remedy this problem. The lack of clear labeling is another reason that neonics should be restricted from consumer use.

Six Frequently Purchased Neonicotinoid Products for Consumer Use

Manufacturer	Product Name	Bee Box ON Front page?	Page # Bee Risk Listed	Describes specific harm to humans?
Bayer	Rose & Flower Insect Killer	NO	3	YES
Bayer	Complete Insect Killer	NO	3	NO
Green Light	Grub Control with Arena	NO	4	YES
Ortho	Flower, Fruit & Vegetable Insect Killer	NO	9	YES
Bayer	Merit 75 WP	NO	4	YES
Bayer	Temprid Ready Spray	NO	--	NO



BAYER
ADVANCED

DUAL ACTION

Rose & Flower
Insect Killer READY-TO-USE

PRECAUTIONARY STATEMENTS (cont'd)

CAUTION Hazards to Humans and Domestic Animals

- Harmful if swallowed or inhaled.
- Causes eye irritation.
- Avoid contact with skin, eyes, or clothing.
- Avoid breathing spray mist.
- Wash thoroughly with soap and water after handling.

FIRST AID +

IN CASE OF ACCIDENTAL ... IMMEDIATELY ...

SWALLOWING

- Call a poison control center or doctor immediately for treatment advice.
- Have person sip a glass of water if able to swallow.
- Do not induce vomiting unless told to do so by a poison control center or doctor.
- Do not give anything by mouth to an unconscious person.

CONTACT WITH EYES

- Hold eye open and rinse slowly and gently with water for 15 to 20 minutes.
- Remove contact lenses, if present, after the first 5 minutes, then continue rinsing eyes.
- Call a poison control center or doctor for treatment advice.

INHALATION

- Move person to fresh air.
- If person is not breathing, call 911 or an ambulance, then give artificial respiration, preferably mouth-to-mouth if possible.
- Call a poison control center or doctor for further treatment advice.

NOTE: When calling poison control center, have this product label accessible. If seeking treatment at an emergency room or doctor's office, bring this product label to show medical personnel.

For medical emergency information, you may call toll-free 1-877-229-3763.

Active Ingredients: 0.0015% Beta-cyfluthrin [CAS # 68359-37-5], 0.012% Imidacloprid [CAS # 138261-41-3]

Money Back Guarantee: If you are not satisfied with this product, we will gladly refund your original purchase price.

Produced for: Bayer Advanced
A Business Unit of Bayer CropScience LP
P.O. Box 12014, 2 T.W. Alexander Drive
Research Triangle Park, NC 27709

Bayer (reg'd), Bayer Cross (reg'd), Tempo®, Merit®,
and Bayer Advanced™ are trademarks
of Bayer.

EPA Reg. No. 72155-28

EPA Est. No. indicated by 3rd and 4th digits of the
batch number on this package. (65) = 432-TX-1
(39) = 58996-MO-1 (68) = 67572-GA-1
(75) = 5905-AR-1 (49) = 072155-AL-001
(13) = 071106-GA-001

PRESS TO RESEAL

7929004b R.1



BAYER
ADVANCED

DUAL ACTION

Rose & Flower
Insect Killer READY-TO-USE

OPEN
Resealable Label
For Directions &
Precautions

*This product provides up to 30 days protection with a single application.
Now keeping your roses and flowers free of listed pests has never been easier.*



READ THE LABEL FIRST!

QUICK FACTS



Indicaciones
en español
después de las
de inglés

- Kills Insects on Contact
- Keeps on Killing for Up to 30 Days
- Ready-to-Use...No Mixing, No Measuring

KILLS	Aphids, Japanese Beetles (adult), Leafminers, Whiteflies and other listed pests
COVERAGE	Treats up to 34 medium-sized plants
WHERE TO USE	Roses, Flowers, Houseplants, Ground Covers and Shrubs
WHEN TO USE	When insects or damage first appear
 	For questions or comments, call toll-free 1-877-BayerAG (1-877-229-3724), or visit us on-line at www.BayerAdvanced.com

ACTIVE INGREDIENTS:

β-cyfluthrin 0.0015%
 Imidacloprid 0.0120%

OTHER INGREDIENTS 99.9865%

TOTAL 100.0000%

β-cyfluthrin is the chemical name for Tempo® Ultra.
Imidacloprid is the chemical name for Merit®.

EPA Reg. No. 72155-28

EPA Est. No. indicated by 3rd and 4th digits of the batch number on this package.

(65) = 432-TX-1 (39) = 58996-MO-1
(68) = 67572-GA-1 (75) = 5905-AR-1
(49) = 072155-AL-001 (13) = 071106-GA-001

79290004b R.1



6 87073 02570 5

KILLS

Adelgids, Ants, Aphids, Bagworms, Boxelder Bugs, Caterpillars, Clover Mites, Cockroaches, Crickets, Earwigs, Elm Leaf Beetles, Flies, Fungus Gnats, Grasshoppers, Gypsy Moth Larvae, Japanese Beetles (adult), Lacebugs, Leaf-feeding Beetles, Leaf-feeding Caterpillars, Leaf Hoppers (including Glassy Winged Sharpshooter), Leafminers, Mealybugs, Midges, Mosquitoes, Plant Bugs, Pillbugs, Pine Tip Moths, Pine Shoot Moths, Psyllids, Rose Midges, Rose Slugs, Sawflies (Sawfly Larvae), Scale Insects (crawler stages), Sowbugs, Spiders, Spittlebugs, Thrips, Webworms, Weevils (including Root Weevils), Whiteflies

DIRECTIONS FOR USE

It is a violation of Federal law to use this product in a manner inconsistent with its labeling.

For best results, be sure to read and follow all label directions.

BEFORE YOU USE

Read and follow these directions when using.

- Apply the product to flowering plants during early morning or late evening, when bees are not present.
- Do not spray the product into fish pools, ponds, streams, or lakes.
- Remove animal feeding dishes prior to application.
- Do not use in small, enclosed areas where spray may be inhaled.
- Do not apply to fruits or vegetables used for food.

WHEN TO USE

When insects or damage first appear. To avoid serious damage, eliminate pests early in the season before they multiply.

HOW TO USE

Shake well before using.

- Adjust nozzle to desired spray pattern.
 - Hold sprayer about 12 inches from foliage.
 - Spray leaves, stems and tender new shoots.
- To kill insects that hide, spray the underside of the leaves. Apply until leaves are evenly coated with spray, but not dripping.



HOW OFTEN

Kills insects on contact and keeps on killing for up to 30 days. For severe infestations, repeat every 7 to 14 days as necessary.

FOR BEST RESULTS

Do not wet the foliage within one hour after applying. To avoid serious damage to plants, eliminate pests early in the season before they multiply.



Children and pets may re-enter after spray has dried.

NOTICE: Research and testing have determined that the "Directions for Use" are appropriate for the proper use of this product under expected conditions. The Buyer assumes responsibility for lack of performance or safety if not used according to the directions.

IMPORTANT: Directions for Storage and Disposal

STORAGE CONDITIONS

Store in an area out of the reach of children, preferably a locked storage cabinet. Protect from freezing.

DISPOSAL



- **If empty:**
 - Non-refillable container. Do not refill or reuse container.
 - Place empty container in trash or offer for recycling if available.
- **If Partly Filled:**
 - Call your local solid waste agency or toll-free 1-877-229-3724 for disposal instructions.
 - Never place unused product down any indoor or outdoor drain.

Important: It is best to use all of the product in accordance with label directions. If it is necessary to dispose of unused product, please follow any applicable state or local guidelines.



PRECAUTIONARY STATEMENTS ENVIRONMENTAL HAZARDS

- This pesticide is highly toxic to aquatic invertebrates and fish. To protect the environment, do not allow pesticide to enter or run off into storm drains, drainage ditches, gutters or surface waters. Applying this product in calm weather when rain is not predicted for the next 24 hours will help to ensure that wind or rain does not blow or wash pesticide off the treatment area.
- This pesticide is highly toxic to bees. Do not apply when bees are active.
- Apply this product only as specified on this label.

¡LEER LA ETIQUETA ANTES DE UTILIZAR EL PRODUCTO!

DATOS RÁPIDOS

- Mata los insectos por contacto
- Continúa matando durante 30 días
- Listo para usar ... No es necesario mezclar ni medir

MATA	Áfidos, escarabajo japonés (adulto), minadores de las hojas, moscas blancas y otros insectos de la lista.
COBERTURA	Trata hasta 34 plantas medianas
DÓNDE USAR	Rosas, flores, plantas del hogar, cubiertas vegetales y arbustos
CUANDO USAR	Ante la presencia de insectos o daños provocados por ellos
 	Para hacer consultas y comentarios, llamar al número gratuito 1-877-BayerAG (1-877-229-3724), o visite nuestra página www.BayerAdvanced.com .

INGREDIENTES ACTIVOS:

β-ciflutrina 0.0015%

Imidacloprida 0.0120%

OTROS INGREDIENTES 99.9865%

TOTAL 100.0000%

β-ciflutrina es el nombre químico para el insecticida Tempo® Ultra.

Imidacloprida es el nombre químico para el insecticida Merit®.

MATA

Adélgidos, hormigas, áfidos, gusanos del saco, chinches del arce, orugas, ácaros de trébol, cucarachas, grillos, tijeretas, escarabajos de la hoja del olmo, moscas, moscas de los hongos, saltamontes, larvas de polilla gitana, escarabajos japoneses (adultos), chinche de encaje, escarabajos desfoliadores, orugas desfoliadoras, saltarillas (incluidas las chicharritas de alas cristalinas), minadores de las hojas, cocos, jejenes, mosquitos, chinches de las plantas, cochinitas, polillas de la punta del pino, polillas del brote de pino, psílidos, mosquitas de la rosa, babosas de la rosa, himenóptero diprionido (larvas de himenóptero diprionido), escamas (etapas de arrastre), arañas, salivazos, trips, orugas tejedoras, gorgojos (incluidos los gorgojos de la raíz), moscas blancas

INDICACIONES DE USO

Es una violación de la Ley Federal utilizar este producto de manera contraria a la indicada en la etiqueta.

Para obtener mejores resultados, leer y seguir todas las indicaciones de la etiqueta.

ANTES DE USAR

Leer y seguir estas indicaciones de uso

- Aplicar el producto a las plantas que están floreciendo temprano por la mañana o al anochecer, cuando las abejas no estén presentes.
- No rociar el producto en estanques de peces, lagunas, riachuelos o lagos.
- Quitar los platos donde se alimentan los animales, antes de la aplicación.
- No utilizar en áreas pequeñas y cerradas donde se pueda inhalar el rocío.
- No aplicar a frutas u hortalizas comestibles.

CUÁNDO USAR

Ante la presencia de insectos o daño provocado por ellos. Para evitar un daño grave a las plantas, eliminar las plagas a comienzos de temporada antes de que se multipliquen.

CÓMO USAR

Agitar bien antes de usar.

- Ajustar la boquilla al patrón de rociado deseado.
- Sostener el rociador a unas 12 pulgadas (30 cm) del follaje.
- Rociar las hojas, los tallos y los delicados brotes nuevos.



Para matar insectos que se ocultan, rociar la parte inferior de las hojas. Aplicar hasta que las hojas estén cubiertas en forma pareja con el rocío, pero que no goteen.

¿CON QUÉ FRECUENCIA?

Mata insectos por contacto y su poder residual continúa durante 30 días.
Para infestaciones graves, repetir cada 7 a 14 días, si es necesario.

PARA OBTENER MEJORES RESULTADOS

No regar el follaje durante la primera hora después de la aplicación. Para evitar un daño grave a las plantas, eliminar las plagas a comienzos de temporada antes de que se multipliquen.



Los niños y las mascotas pueden reingresar al área tratada una vez que el producto se haya secado.

NOTA: Investigaciones y pruebas han determinado que las "Indicaciones de uso" son las adecuadas para el uso apropiado de este producto bajo las condiciones previstas. El Comprador asume la responsabilidad por la falta de rendimiento o seguridad si no es utilizado de acuerdo con las indicaciones.

IMPORTANTE: Indicaciones para almacenamiento y eliminación

CONDICIONES DE ALMACENAMIENTO

Almacenar en un lugar fuera del alcance de los niños, preferentemente en un armario bajo llave. Evitar que el producto se congele.

ELIMINACIÓN



Si está vacío:

- Contenedor no reusable. No volver a rellenar ni utilizar este contenedor.
- Colocar el contenedor vacío en la basura o entregarlo para reciclar si fuera posible.

Si está parcialmente lleno:

- Llamar a la agencia local de residuos sólidos o al número gratuito 1-877-229-3724 para solicitar indicaciones para la eliminación.
- Nunca colocar el producto sin utilizar debajo de algún desagüe interno o externo.

Importante: Es preferible usar todo el producto de acuerdo con las indicaciones de la etiqueta. Si es necesario eliminar producto sin usar, seguir las normas estatales y locales correspondientes.

MANTENER FUERA DEL ALCANCE DE LOS NIÑOS

DECLARACIONES DE PRECAUCIÓN PELIGROS AMBIENTALES

- Este pesticida es altamente tóxico para los animales acuáticos invertebrados y peces. Para proteger el medio ambiente, no permitir que el pesticida ingrese o se escurra en las bocas de tormenta, zanjas, alcantarillas o aguas superficiales. Aplicar este producto cuando el clima esté calmo y no haya probabilidad de lluvia para las 24 horas siguientes, ayudará a garantizar que el viento o la lluvia no dispersen o escurran el pesticida del área de tratamiento.
- Este pesticida es altamente tóxico para las abejas. No aplicar este producto cuando las abejas están activas.
- Aplicar este producto sólo como se especifica en esta etiqueta.

DECLARACIONES DE PRECAUCIÓN (continuación)

PRECAUCIÓN Peligros para seres humanos y animales domésticos

- Es perjudicial si se ingiere o inhala.
- Causa irritación en los ojos.
- Evitar el contacto con los ojos, la piel o la ropa.
- Evitar inhalar el humo del rocío.
- Lavarse prolijamente con agua y jabón después de manipular el producto.

PRIMEROS AUXILIOS +

EN CASO ACCIDENTAL DE... INMEDIATAMENTE...

INGESTIÓN

- Llamar inmediatamente a un médico o a un centro de control de envenenamiento para consultas sobre el tratamiento.
- Hacer que la persona beba tragos de agua, si puede tragar.
- No inducir el vómito a menos que lo indique un centro de control de envenenamiento o el médico.
- No administrar nada por boca a una persona inconsciente.

CONTACTO CON LOS OJOS

- Mantener los ojos abiertos y enjuagar en forma lenta y suave con agua durante 15 a 20 minutos.
- Retirar los lentes de contacto, si los hubiera, después de los primeros 5 minutos, luego continuar enjuagando los ojos.
- Llamar a un centro de control de envenenamiento o al médico para consultas sobre el tratamiento.

INHALACIÓN

- Trasladar a la persona a un lugar fresco.
- Si hay paro respiratorio, llamar al 911 o a una ambulancia, luego administrar respiración artificial, preferentemente boca a boca si es posible.
- Llamar a un centro de control de envenenamiento o al médico para mayores consultas sobre el tratamiento.

NOTA: Al llamar a un centro de control de envenenamiento, tener la etiqueta del producto a mano. En caso de solicitar tratamiento en una sala de emergencia o consultorio médico, llevar la etiqueta de este producto para mostrarla al personal médico. **Para solicitar información médica de emergencia, llamar al número gratuito 1-877-229-3763.** Ingredientes activos: 0.0015% β-ciflutrina (CASN° 68359-37-5) y 0.0120% imidacloprida (CASN° 138261-41-3)

Garantía de devolución de dinero: Si usted no está satisfecho con este producto, gustosamente le reembolsaremos el monto original del precio de compra.

25% MORE* *VS 32 OZ SIZE



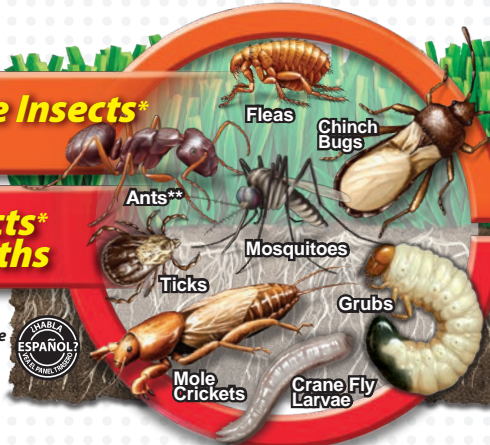
COMPLETE BRAND INSECT KILLER

For Soil & Turf Concentrate

2-WAY FORMULA

**Kills Surface Insects*
in 24 Hours**

**Kills Soil Insects*
for up to 3 Months**



FÓRMULA DE DOBLE ACCIÓN
Mata los insectos de la superficie
en 24 horas
Mata los insectos del suelo por
3 meses



*listed insects
** Except pharaoh ants

Active Ingredient:
Imidacloprid 0.72%
β-Cyfluthrin 0.36%
Other Ingredients 98.92%
Total 100.00%

This bottle contains 0.019 lbs of imidacloprid.

KEEP OUT OF REACH OF CHILDREN

CAUTION See back panel booklet for additional precautionary statements

Not for sale, sale into, distribution or use in Nassau, Suffolk, Kings, and Queens counties of New York.

RAINPROOF
1 Hour After Application

Covers
6,667 Sq Ft

NET CONTENTS 40 FL OZ (1183ml)

US84065919a 140212AV1a



**BAYER
ADVANCED**

**COMPLETE
BRAND
INSECT KILLER**
For Soil & Turf Concentrate

Contains Bayer's 2-way formula for control of surface insects like ants**, fleas, and ticks plus subsurface insects like grubs and European crane fly larvae in one easy step. Keeping your lawn free of listed nuisance pests has never been easier.

PRECAUTIONARY STATEMENTS (cont'd)

CAUTION Hazards to Humans and Domestic Animals

- Harmful if swallowed.
- Harmful if absorbed through skin.
- Harmful if inhaled.
- Causes moderate eye irritation.
- Avoid contact with skin, eyes, or clothing.
- Avoid breathing spray mist or vapor.
- Wash hands before eating, drinking, chewing gum, using tobacco, or using the toilet.
- Remove and wash contaminated clothing before reuse.

FIRST AID+

IF SWALLOWED

- Call a poison control center or doctor immediately for treatment advice.
- Have person sip a glass of water if able to swallow.
- Do not induce vomiting unless told to by a poison control center or doctor.
- Do not give anything by mouth to an unconscious person.

IF ON SKIN OR CLOTHING

- Take off contaminated clothing.
- Rise skin immediately with plenty of water for 15-20 minutes.
- Call a poison control center or doctor for treatment advice.

IF IN EYES

- Hold eye open and rinse slowly and gently with water for 15 to 20 minutes. Remove contact lenses, if present, after the first 5 minutes, then continue rinsing.
- Call a poison control center or doctor for treatment advice.

IF INHALED

- Move person to fresh air.
- If person is not breathing, call 911 or ambulance, then give artificial respiration, preferably mouth to mouth, if possible.
- Call a poison control center or doctor for further treatment advice.

NOTE: Have the product container or label with you when calling a poison control center or doctor or going for treatment.

For medical emergency information, you may call toll-free 1-877-229-3763.

Active Ingredients: 0.36% Beta-cyfluthrin [CAS # 68359-37-5], 0.72% Imidacloprid [CAS# 138261-41-3].

NOTICE: Research and testing have determined that the "Directions For Use" are appropriate for the proper use of this product under expected conditions. To the extent consistent with applicable law, the Buyer assumes responsibility for lack of performance or safety if not used according to the directions.

Money Back Guarantee: If you are not satisfied with this product, we will gladly refund your original purchase price.

EPA Reg. No. 72155-29

EPA Est. No indicated by 3rd and 4th digits of the batch number on this package.
(65) = 432-TX-1 (39) = 58996-MO-1 (57) = 071106-GA-003 (68) = 67572-GA-1

Produced for:

Bayer Advanced, A Division of Bayer CropScience LP
P.O. Box 12014, 2 T.W. Alexander Drive, Research Triangle Park, NC 27709

Bayer (reg'd), Bayer Cross (reg'd), Tempo®, Merit®, and Bayer Advanced™ are trademarks of Bayer.

** Except pharaoh ants

PRESS TO RESEAL

US79486294g 140212AV1

READ THE LABEL FIRST!


QUICK FACTS



OPEN
Resealable Label
for Directions &
Precautions

- Works 2 Ways for Effective Insect Control
- Kills Listed Insects Both Above and Below Ground
- Long-Lasting - Up to 90-Day Subsurface Insect Protection

Indicaciones
en español
después de las
de inglés

KILLS	Ants**, Fleas, Ticks, Grubs, Chinch Bugs, Mole Crickets, European Crane Fly Larvae, Stink Bugs (including Brown Marmorated Stink Bugs and Kudzu Bugs), and other listed pests
COVERAGE	<ul style="list-style-type: none"> • Makes up to 80 gallons of spray solution • Treats over 1250 rose bushes • Covers 6,667 sq. ft. of lawn
WHERE TO USE	Lawns, Ground Covers, Flowers, Roses, Trees & Shrubs, Along Building Foundations
WHEN TO USE	<ul style="list-style-type: none"> • When insects or damage first appear • Grubs: May through July
HOW MUCH TO USE	Dilute 1/2 fl. oz. (1 Tablespoon) per gallon of water For lawn pests and along building foundations, dilute 3 fl. oz. per gallon
	For questions or comments, call toll-free 1-877-BayerAG (1-877-229-3724) or visit our website at www.bayeradvanced.com

ACTIVE INGREDIENTS:

Imidacloprid	0.72%
β-Cyfluthrin	0.36%
OTHER INGREDIENTS	98.92%
TOTAL	100.00%

**FOR OUTDOOR
RESIDENTIAL
USE ONLY**

This bottle contains 0.019 lbs of imidacloprid.

β-cyfluthrin is the chemical name for Tempo® Ultra Insecticide.

Imidacloprid is the chemical name for Merit® Insecticide.

EPA Reg. No. 72155-29

EPA Est. No. indicated by 3rd and 4th digits of the batch number on this package.
(65) = 432-TX-1 (39) = 58996-MO-1
(57) = 071106-GA-003 (68) = 67572-GA-1



U579486294g 1.40Z12AV1

** Except pharaoh ants

DIRECTIONS FOR USE

It is a violation of Federal Law to use this product in a manner inconsistent with its labeling.



Do not apply this product while bees are foraging. Do not apply this product to plants that are flowering. Only apply after all flower petals have fallen off.

Read and follow all label restrictions and directions when using this product.

BEFORE YOU USE

RESTRICTIONS

- Do not spray the product into fish pools, ponds, streams, or lakes.
- Remove animal feeding dishes prior to application. Keep people and pets away from treated areas until spray has dried.
- Do not harvest or consume fruits or nuts from trees that have been treated within 1 year.
- Do not make applications during rain.
- All outdoor applications must be limited to spot or crack-and-crevice treatment only, except for the following permitted uses:
 - Treatment to soil or vegetation around structures;
 - Applications to lawns, turf, and other vegetation;
 - Applications to building foundations, up to a maximum height of 3 feet.
- Other than applications to building foundations, all outdoor applications to impervious surfaces such as sidewalks, driveways, patios, porches and structural surfaces (such as windows, doors, and eaves) are limited to spot and crack-and-crevice applications, only.
- Application is prohibited directly into sewers or drains, or to any area like a gutter where drainage to sewers, storm drains, water bodies, or aquatic habitat can occur. Do not allow the product to enter any drain during or after application.
- Do not apply this product, by any application method, to linden, basswood, or other Tilia species.
- For Outdoor Residential Use Only.
- Do not apply more than 0.4 lb of active ingredient [21 bottles] per acre per year. This bottle contains 0.019 lbs of imidacloprid.
- Do not mow lawn area for 24 hours after application.
- Do not allow runoff or puddling of irrigation water following application.
- Do not apply to areas which are water logged or saturated, which will not allow penetration into the root zone of the plant.

MIXING AND MEASURING Shake Well Before Use. SEE SPRAYER TYPES

HOW MUCH TO USE Dilute 1/2 fl. oz. (1 Tablespoon) per gallon of water. Lawns & along building foundations: 3 fl. oz. per gallon of water (covers 500 sq. feet)

HOW TO SPRAY Adjust nozzle on your sprayer to desired spray pattern. Hold sprayer about 12 inches from foliage. Spray leaves and tender new shoots. To kill insects that may hide, spray the underside of the leaves. Apply until leaves are evenly coated with spray, but not dripping.

(cont'd)

DIRECTIONS FOR USE (cont'd)

FOLIAR USE ON OUTDOOR ORNAMENTALS
(Use prior to bloom or after petal fall is complete)

On Flowers and Roses, Shrubs and Trees, Evergreens, Ground Covers, and Foliage Plants

KILLS	Adelgids	Leaf-feeding caterpillars	Sawflies
	Ants**	Leafhoppers	Scale insects
	Aphids	(including Glassy-Winged Sharpshooters)	(crawler stages)
	Bagworms		Spittlebugs
	Boxelder bugs		Stink Bugs
	Clover mites	Leafminers	(including Brown Marmorated Stink Bugs and Kudzu Bugs)
	Cutworms	Mealybugs	Thrips
	Elm leaf beetles	Midges	Weevils (including root weevils)
	Fungus Gnats	Pine Shoot Moths	Whiteflies
	Grasshoppers	Pine Tip Moths	
	Gypsy moths	Plant bugs	
	Japanese beetles	Psyllids	
	Lace bugs	Rose Midges	
	Leaf-feeding beetles	Rose Slugs	

ON LAWNS AND ALONG BUILDING FOUNDATIONS

KILLS	Annual Bluegrass weevil (hyperodes weevil)	Crickets	Pillbugs
	Ants**	Cutworms	Sod webworms
	Carpenter Ants	Earwigs	Sowbugs
	Armyworms	European crane fly larvae	Spiders
	Billbugs	Fire ants	Stink Bugs
	Bluegrass billbugs	Fleas	(including Brown Marmorated Stink Bugs and Kudzu Bugs)
	Boxelder bugs	Flies	Ticks (including deer ticks)
	Caterpillars	Grasshoppers	Wasps
	Chiggers	Hyperodes weevils	White grubs
	Chinch bugs	Japanese beetles	
	Clover mites	Mole crickets	
	Cockroaches	Mosquitoes	

FOR BEST RESULTS • Rain or watering one hour after application will not wash away effectiveness.

HOW THIS PRODUCT WORKS • This 2-way dual action product contains both contact and systemic insecticides and effectively controls listed insects infesting flowers, other ornamental plants, and lawns. The two-way blend of insecticides controls current infestations of listed insects and prevents reinfestations for up to 30 days for listed surface insects and 90 days for listed subsurface insects. The residual component is actually taken into the plant. Rain or water cannot wash off this internal protection! Listed insects are killed when they come into contact with the product or when they attempt to eat the plant.

Restrictions
Do not apply this product while bees are foraging. Do not apply this product to flowers that are flowering. Only apply after all flower petals have fallen off.

Application Instructions
To avoid serious damage to plants, eliminate pests early in the season before they multiply. For severe infestations, repeat every 7 to 14 days as needed.

** Except pharaoh ants

 People and pets may re-enter the treated area after spray has dried.

SPRAYER TYPE

FOR PUMP STYLE TANK SPRAYERS

- To make one gallon of spray:
1. Pour 1/2 fl. oz. (1 tablespoon) of the liquid concentrate.
 2. Dilute with 1 gallon of water.
 3. Close sprayer and shake well before applying.



FOR DIAL-STYLE HOSE-END SPRAYERS

Dilution rate: 1/2 fl. oz. per gallon (1 tablespoon = 1/2 fl. oz.)
Lawns & along building foundations: 3 fl. oz. per gallon of water (covers 500 sq. feet)

1. Fill sprayer jar with enough concentrate to cover area to be treated.
2. Close sprayer and set dial.
3. Attach sprayer to hose and apply.
4. To avoid contact with the treated area, begin by spraying area farthest from faucet walking backwards as you spray.



FOR CONCENTRATE PLUS WATER HOSE-END SPRAYERS

Dilution rate: 1/2 fl. oz. per gallon (1 tablespoon = 1/2 fl. oz.)
Lawns & along building foundations: 3 fl. oz. per gallon of water (covers 500 sq. feet)

1. Pour concentrate into sprayer jar to the required fluid ounce level.
2. Add the appropriate amount of water to the gallons level.
3. Replace sprayer top and shake well before applying.
4. To avoid contact with the treated area, begin by spraying area farthest from faucet walking backwards as you spray.



STORAGE AND DISPOSAL

Do not contaminate water, food, or feed by storage or disposal.

PESTICIDE STORAGE

Store in original container in a cool, dry place, out of the reach of children, preferably a locked storage cabinet.

CONTAINER HANDLING



- If Empty:**
- Non-refillable container. Do not refill or reuse container.
 - Place empty container in trash or offer for recycling if available.
- If Partly Filled:**
- Call your local solid waste agency or call toll-free 1-877-229-3724 for disposal instructions.
 - Never place unused product down any indoor or outdoor drain.

PRECAUTIONARY STATEMENTS ENVIRONMENTAL HAZARDS

- This product is highly toxic to aquatic invertebrates and fish.
- This pesticide is highly toxic to bees. Do not apply this product when bees are foraging.
- To protect the environment, do not allow pesticide to enter or run off into storm drains, drainage ditches, gutters or surface waters. Applying this product in calm weather when rain is not predicted for the next 24 hours will help to ensure that wind or rain does not blow or wash pesticide off the treatment area. Rinsing application equipment over the treated area will help avoid run off to water bodies or drainage systems.

PROTECTION OF POLLINATORS

 **APPLICATION RESTRICTIONS EXIST FOR THIS PRODUCT BECAUSE OF RISK TO BEES AND OTHER INSECT POLLINATORS. FOLLOW APPLICATION RESTRICTIONS FOUND IN THE DIRECTIONS FOR USE TO PROTECT POLLINATORS.** Look for the bee hazard icon in the Directions for Use for each application site for specific use restrictions and instructions to protect bees and other insect pollinators. **This product can kill bees and other insect pollinators.**

Bees and other insect pollinators will forage on plants when they flower, shed pollen, or produce nectar.

Bees and other insect pollinators can be exposed to this pesticide from:

- Direct contact during foliar applications, or contact with residues on plant surfaces after foliar applications
- Ingestion of residues in nectar and pollen when the pesticide is applied as a seed treatment, soil, tree injection, as well as foliar applications.

When Using This Product Take Steps To:

- Minimize exposure of this product to bees and other insect pollinators when they are foraging on pollinator attractive plants around the application site.
- Minimize drift of this product on to beehives or to off-site pollinator attractive habitat. Drift of this product onto beehives or off-site to pollinator attractive habitat can result in bee kills.

Information on protecting bees and other insect pollinators may be found at the Pesticide Environmental Stewardship website at:

<http://pesticidestewardship.org/PollinatorProtection/Pages/default.aspx>.

Pesticide incidents (for example, bee kills) should immediately be reported to the state/tribal lead agency.

For contact information for your state, go to: www.aapco.org/officials.html. Pesticide incidents should also be reported to the National Pesticide Information Center at: www.npic.orst.edu or directly to EPA at: beekill@epa.gov.

¡LEER LA ETIQUETA ANTES DE UTILIZAR EL PRODUCTO!

DATOS RÁPIDOS

- **Doble acción para el control efectivo de insectos**
- **Extermina los insectos tanto sobre como bajo tierra**
- **Protección duradera, hasta 90 días para los insectos de subsuperficies**

MATA	Hormigas**, pulgas, garrapatas, larvas, chinches, grillos topo, larvas de tipula paludosa, chinches hediondas (incluyendo chinches hediondas marrones marmoladas y chinches Kudzu) y otras plagas de la lista.
COBERTURA	<ul style="list-style-type: none"> • Rinde hasta 80 galones de solución de rociado. • Trata alrededor de 1250 rosas silvestres. • Cubre 6.667 pies cuadrados de césped.
DÓNDE USAR	Céspedes, cubresuelos, flores, rosas, árboles y arbustos, cimientos de edificios.
CUÁNDO USAR	<ul style="list-style-type: none"> • Cuando los insectos o el daño aparezca primero. • Larvas: desde mayo a julio.
CUÁNTO USAR	Diluir 1/2 onza líquida (1 cucharada) por galón de agua. Para las plagas del césped y en cimientos de edificios, diluir 3 onzas líquidas por galón.
 	Para preguntas o comentarios, llame al número gratuito 1-877-BayerAG (1-877-229-3724) o visite nuestra página web en www.bayeradvanded.com

INGREDIENTES ACTIVOS

Imidacloprida	0,72%
β-Ciflutrina	0,36%
OTROS INGREDIENTES:	98,92%

TOTAL 100,00%
β-ciflutrina es el nombre químico de Tempo® Ultra Insecticida.
Imidacloprida es el nombre químico de Merit® Insecticida

SÓLO PARA USO RESIDENCIAL EN EXTERIORES

Este envase contiene 0,019 libras de Imidacloprida.
**excepto las hormigas faraón

INDICACIONES DE USO

Es una violación de la Ley Federal utilizar este producto de manera contraria a la indicada en la etiqueta.



- No aplique este producto mientras las abejas estén forrajeando.
- No aplique este producto a plantas que estén en floración.
- Aplicar únicamente luego de que todos los pétalos de las flores hayan caído.

Lea y siga todas las restricciones e instrucciones de la etiqueta cuando use este producto.

ANTES DE USAR

RESTRICCIONES

- No rocíe el producto en estanques de agua, lagunas, arroyos o lagos.
- Retire los comederos de animales antes de la aplicación. Mantenga a las personas y mascotas alejadas de las áreas tratadas hasta que se haya secado el rociado.
- No coseche o consuma frutos o frutos secos de los árboles que han sido tratados al menos por un año.
- No realice aplicaciones durante la lluvia.

(continuación)

INDICACIONES DE USO (continuación)

ANTES DE USAR (continuación)

RESTRICCIONES (continuación)

- Todas las aplicaciones en el exterior deben limitarse a tratamientos en puntos localizados, grietas y hendiduras solamente, salvo para los siguientes usos permitidos:
 - (1) tratamiento a la tierra o vegetación alrededor de estructuras;
 - (2) aplicaciones a céspedes, turba, y otro tipo de vegetación;
 - (3) aplicaciones a cimientos, hasta una altura máxima de 3 metros.
- Otras aplicaciones que no sean a cimientos de edificios, todas las aplicaciones en el exterior en superficies no porosas tales como veredas, entradas de auto, patios, porches y superficies estructurales (tales como ventanas, puertas, y aleros) se limitan a puntos localizados y aplicaciones de grietas y hendiduras, solamente:
- Se prohíben las aplicaciones directamente a cloacas o cañerías, o en cualquier área como alcantarillados donde haya desagües a cloacas, bocas de tormenta, masas de agua, o hábitat acuático. No permita que el producto ingrese a ninguna cañería durante o después de la aplicación.
- No aplique este producto, con ningún método de aplicación, a ninguna especie de tilo.
- Para uso residencial en el exterior solamente.
- No aplique más de 0,4 libras del ingrediente activo [21 envases] por acre al año. Este envase contiene 0,0019 libras de imidacloprida.
- No cortar el área de césped por 24 horas después de la aplicación.
- No permitir escurrimiento o la formación de charcos por el riego después de la aplicación.
- No aplicar en áreas saturadas o sumergidas en agua, ya que no dejarán que el producto penetre a la zona radicular de la planta.

MEZCLAR Y MEDIR

Mezclar bien antes de usar.
VER LAS CLASES DE ROCIADORES

CUÁNTO USAR

Diluir 1/2 onza líquida (1 cucharada) por galón de agua. Céspedes y cimientos de edificios: 3 onzas líquidas por galón de agua (cubre 500 pies cuadrados).

CÓMO ROCIAR

Ajustar la boquilla del rociador para generar el rociado deseado. Mantener el rociador a una distancia de 12 pulgadas del follaje. Rocíar las hojas y los brotes nuevos tiernos. Para exterminar los insectos que se escondan, rocíar la parte inferior de las hojas. Aplicar hasta cubrir en forma uniforme las hojas con el rociado, pero sin que goteen.

USO FOLIAR EN PLANTAS ORNAMENTALES EN EXTERIOR (Usar antes de la floración o después de que se hayan caído todos los pétalos)

En flores y rosas, setos y árboles, árboles de hojas perennes, cubresuelos, y plantas de follaje.

MATA

Adélgidos	Polillas gitanas	Minadores de la hoja
Hormigas**	Escarabajos japoneses	Chinches harinosas
Afidos	Chinches de encaje	Mosquitos
Gusanos del saco	Escarabajos comedores de hojas	Polillas de los brotes del pino
Escarabajos del arce	Orugas comedoras de hojas	Polillas de las puntas del pino
Ácaros del trébol	Saltahojas (incluyendo chicharritas de alas cristalinas)	Chinches de la planta (continuación)
Gusanos cortadores		
Escarabajos de la hoja del olmo		
Mosquitos del hongo		
Saltamontes		

**excepto las hormigas faraón

INDICACIONES DE USO (continuación)

USO FOLIAR EN PLANTAS ORNAMENTALES EN EXTERIOR

(continuación)

MATA (continuación)	Minadores de la hoja	Caracoles de la rosa	Trips
	Chinches harinosas	Moscas sierra	Gorgojos (incluyendo
	Mosquitos	Insectos escala (estadio larvario)	gorgojos de la raíz)
	Polillas de los brotes del pino	Gusano salivador	Moscas blancas
	Polillas de las puntas del pino	Chinches hediondas (incluyendo chinches	
	Chinches de la planta	hediondas marrones	
	Psíllidos	marmoladas y chinches kudzu)	

EN CÉSPEDES Y CIMIENTOS DE EDIFICIOS

MATA	Gorgojos anuales del Bluegrass(gorgojos hiperodes)	Grillos	Gusano salivador
	Hormigas**	Gusanos cortadores	Bicho bolita
	Hormigas carpinteras	Tijeretas	Arañas
	Gusanos soldados	Larvas de la tipula paludosa	Chinches hediondas
	Chinches	Hormigas rojas	Chinches hediondas (incluyendo chinches
	Chinches del bluegrass	Pulgas	hediondas marrones
	Escarabajos de la hoja del olmo	Moscas	marmoladas y chinches kudzu)
	Orugas	Saltamontes	
	Niguas	Gorgojos hiperodes	Trips
	Chinches	Escarabajos japoneses	Tics (incluyendo tics del ciervo)
	Ácaros del trébol	Grillos topo	Avispas
	Cucarachas	Mosquitos	Larvas blancas
		Cochinillas	

PARA OBTENER MEJORES RESULTADOS

- La lluvia o el riego una hora después de la aplicación no disminuirá la eficacia del producto.

CÓMO FUNCIONA

- Este producto de doble acción contiene insecticidas de contacto y sistémico y efectivamente controla los insectos del listado que infestan flores, otras plantas ornamentales y céspedes. La combinación de doble acción de insecticidas controla las infestaciones actuales de los insectos del listado y evita hasta por 30 días nuevas infestaciones de insectos de superficie que figuran en el listado y hasta por 90 días de insectos de subsuperficie del listado. El componente residual fluye por la planta. La lluvia o el agua no eliminan esta protección interna. Los insectos que figuran en el listado son exterminados cuando entran en contacto con el producto o cuando ellos intentan ingerir la planta.

Restricciones

No aplicar este producto cuando las abejas estén en busca de alimentos. No aplicar este producto a plantas que estén en floración. Solo aplicar este producto después de que los pétalos de las flores se hayan caído.

Instrucciones para la aplicación

Para tratar una enfermedad existente: elimine las plagas al comienzo de la temporada antes de que se multipliquen. Para infestaciones graves, repita cada 7-14 días según sea necesario.

**excepto las hormigas faraón



Las personas y las mascotas pueden volver a entrar después de que el rociado se haya secado.

TIPOS DE ROCIADORES

PARA ROCIADORES DE TANQUE ESTILO BOMBA

Para preparar un galón de rociado:

1. Verter ½ onza líquida (1 cucharada) de concentrado líquido.
2. Diluir con 1 galón de agua.
3. Cerrar el rociador y mezclar bien antes de la aplicación.



PARA ROCIADORES CON APLICADOR TIPO MANGUERA CON SELECTOR

Proporción de la dilución: ½ onza líquida por galón (1 cucharada: ½ onza líquida)

Céspedes y en cimientos de edificios: 3 onzas líquidas por galón de agua (cubre 500 pies cuadrados).

1. Llenar el recipiente del rociador con suficiente concentrado para cubrir el área a tratar.
2. Cerrar el rociador y ajustar el selector.
3. Ajustar el rociador a la manguera y aplicar.
4. Para evitar el contacto con el área tratada, comenzar rociando el área más alejada de la canilla caminando hacia atrás mientras se aplica el rociado.



PARA ROCIADORES CON APLICADOR TIPO MANGUERA PARA CONCENTRADO Y AGUA

Proporción de la dilución: ½ onza líquida por galón (1 cucharada: ½ onza líquida)

Céspedes y en cimientos de edificios: 3 onzas líquidas por galón de agua (cubre 500 pies cuadrados).

1. Verter el concentrado en el recipiente del rociador hasta el nivel de onzas líquidas deseado.
2. Agregar la cantidad apropiada de agua según la cantidad de galones.
3. Reemplazar la parte superior del rociador y mezclar bien antes de la aplicación.
4. Para evitar el contacto con el área tratada, empezar rociando el área más alejada de la canilla caminando hacia atrás mientras se aplica el rociado.



ALMACENAMIENTO Y ELIMINACIÓN

No contamine alimentos, agua, o forraje por almacenamiento y eliminación.

ALMACENAMIENTO DEL PESTICIDA

Almacene en el contenedor original en un lugar fresco y seco, fuera del alcance de los niños, preferentemente en un gabinete bajo llave.

MANIPULACIÓN DEL ENVASE



Si está vacío:

- Contenedor no reusable. No llene ni vuelva a utilizar el contenedor.
- Coloque el contenedor vacío en la basura o entréguelo para reciclar de ser posible.

Si está parcialmente lleno:

- Llame a la agencia local de residuos sólidos o al número gratuito 1-877-229-3724 para obtener indicaciones sobre la eliminación.
- Nunca colocar el producto sin utilizar debajo de algún desagüe interno o externo.

MANTENER FUERA DEL ALCANCE DE LOS NIÑOS

DECLARACIONES DE PRECAUCIÓN RIESGOS AMBIENTALES

- Este producto es altamente tóxico para los invertebrados acuáticos y peces.
- Este pesticida es altamente tóxico para las abejas. No aplicar este producto cuando las abejas estén presente.
- Para proteger el medio ambiente, no permitir que el pesticida ingrese o se escurra en las bocas de tormenta, zanjas, alcantarillas o aguas superficiales. La aplicación de este producto cuando el clima esté calmo y no haya probabilidad de lluvia para las próximas 24 horas garantizará que el viento o la lluvia no dispersen o escurran el pesticida del área de tratamiento. Enjuagar el equipo de aplicación sobre el área tratada ayudará a evitar el escurrimiento de masas de agua o sistemas de drenaje.

PROTECCIÓN DE POLINIZADORES



EXISTEN RESTRICCIONES DE APLICACIÓN PARA ESTE PRODUCTO DEBIDO AL RIESGO PARA LAS ABEJAS Y OTROS INSECTOS POLINIZADORES. SIGA LAS RESTRICCIONES DE APLICACIÓN QUE SE ENCUENTRAN EN LAS INDICACIONES DE USO PARA PROTEGER A LOS POLINIZADORES.

Busque el icono de peligro para abejas en las Indicaciones de uso para cada lugar de aplicación para encontrar las restricciones de uso e indicaciones específicas para proteger a las abejas y a otros insectos polinizadores.

Este producto puede matar a las abejas y a otros insectos polinizadores.

Las abejas y otros insectos polinizadores forrajean las plantas cuando éstas florecen, emiten polen o producen néctar.

Las abejas y otros insectos polinizadores pueden quedar expuestos a este pesticida por:

- Contacto directo durante aplicaciones foliares o contacto con residuos sobre la superficie de las plantas luego de aplicaciones foliares
- Ingesta de residuos en el néctar o el polen cuando se aplica el pesticida como tratamiento para las semillas, la tierra, injertos de árboles y aplicaciones foliares.

Cuando use este producto, tome medidas para:

- Minimizar la exposición de este producto a las abejas y otros insectos polinizadores cuando éstos forrajean o se encuentran sobre plantas atractivas para los polinizadores cerca del lugar de aplicación.
- El flujo de este producto hacia los panales o los hábitats atractivos para polinizadores que se encuentren fuera del lugar de aplicación puede resultar en la muerte de las abejas.

Puede encontrar información sobre cómo proteger a las abejas u otros insectos polinizadores en el sitio web de Administración Ambiental de Pesticidas en:

<http://pesticidestewardship.org/PollinatorProtection/Pages/default.aspx>.

Los incidentes con pesticidas (como muerte de abejas) deben ser informados inmediatamente a la agencia de dirección estatal o tribal.

Para ver la información de contacto de su estado, entre a www.aapco.org/officials.html.

Los incidentes con pesticidas también deben ser informados al Centro de Información Nacional de Pesticidas en:

www.npic.orst.edu o directamente a la EPA en: beekill@epa.gov.

DECLARACIONES DE PRECAUCIÓN (continuación)

PRECAUCIÓN Riesgos para los seres humanos y animales domésticos

- Perjudicial si se ingiere.
- Perjudicial si se absorbe a través de la piel.
- Perjudicial si se inhala.

(continuación)

DECLARACIONES DE PRECAUCIÓN (continuación)

PRECAUCIÓN Riesgos para los seres humanos y animales domésticos

(continuación)

- Causa moderada irritación en los ojos.
- Evitar el contacto con la piel, los ojos, o la ropa.
- Evitar respirar el rocío o el vapor del aerosol.
- Lavar bien las manos antes de comer, beber, masticar goma de mascar, usar tabaco o ir al baño.
- Sacar y lavar la ropa contaminada antes de volverla usar.

PRIMEROS AUXILIOS+

SI SE INGIERE	<ul style="list-style-type: none">• Llamar inmediatamente a un médico o a un centro de control de envenenamiento para consultas sobre el tratamiento.• Hacer que la persona beba tragos de agua, si puede tragar.• No inducir el vómito a menos que lo indique un médico o un centro de control de envenenamiento.• No administrar nada por boca a una persona inconciente.
EN CONTACTO CON LOS OJOS	<ul style="list-style-type: none">• Mantener los ojos abiertos y enjuagar en forma lenta y suave con agua durante 15-20 minutos. Retirar las lentes de contacto, si tuviera, después de los primeros 5 minutos, luego continuar enjuagando los ojos.• Llamar a un médico o al centro de control de envenenamiento para consultas sobre el tratamiento.
EN CONTACTO CON LA PIEL O LA ROPA	<ul style="list-style-type: none">• Sacar la ropa contaminada.• Enjuagar la piel inmediatamente con abundante agua durante 15-20 minutos.• Llamar a un médico o un centro de control de envenenamiento para recibir tratamiento.
SI SE INHALA	<ul style="list-style-type: none">• Mover a la persona al aire fresco.• Si la persona no respira, llamar al 911 o a una ambulancia, luego aplicar respiración artificial, preferentemente boca a boca de ser posible.• Llamar a un centro de control de envenenamiento o a un médico para recibir asesoramiento adicional sobre el tratamiento.

NOTA: Cuando llame al centro de control de envenenamiento, tenga a su alcance la etiqueta del producto.

Para solicitar información de emergencias médicas, usted puede llamar al número gratuito 1-877-229-3763

Ingredientes activos: 0,36% Beta-ciflutrina [CAS # 68359-37-5], 0,72% Imidacloprida [CAS # 138261-41-3]

NOTA: Las pruebas y las investigaciones han determinado que las "Indicaciones de Uso" son las adecuadas para el uso apropiado de este producto bajo las condiciones previstas. El Comprador asume la responsabilidad, en la medida en que este de acuerdo con la ley vigente, por la falta de rendimiento o seguridad si el producto no es utilizado según las indicaciones de uso.

Garantizamos la devolución del dinero: Si usted no está satisfecho con este producto, gustosamente le reembolsaremos el monto original del precio de compra.

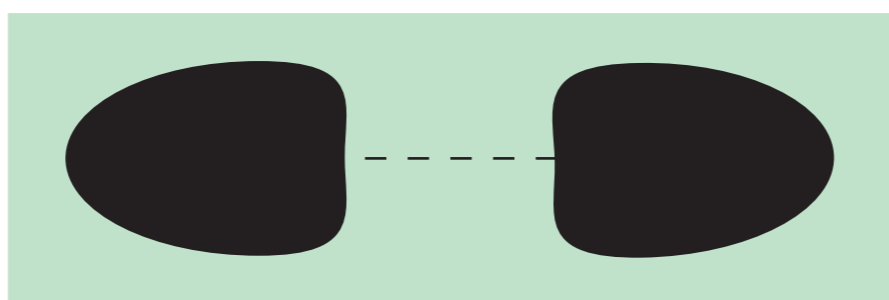
1.75"

10"

1.75"

0.75"

0.625" trim



Grub Control with ARENA®

Use on Lawns, Ground Covers & Flower Beds
One Application Kills Grubs All Season Long
Also Kills: Crane Fly Larvae, Chinch Bugs,
Cutworms, Bluegrass Weevils, Billbugs & More



TREATS UP TO 5,000 SQ FT

For Outdoor Home Use Only

ACTIVE INGREDIENT:	
Clothianidin, (E)-1-(2-chlorothiazol-5-ylmethyl)	0.25%
-3-methyl-2-nitroguanidine	99.75%
OTHER INGREDIENTS	
TOTAL	100.00%

KEEP OUT OF REACH OF CHILDREN
CAUTION See Back Panel For Additional
Precautionary Statements.

MANTÉNGALO FUERA DEL ALCANCE DE LOS NIÑOS
PRECAUCIÓN Veá las declaraciones preventivas
adicionales en el panel posterior.

NET WT 12 LB (5.45 kg)

00000
Form 7094-A



Grub Control with ARENA®

Grub Control with ARENA®



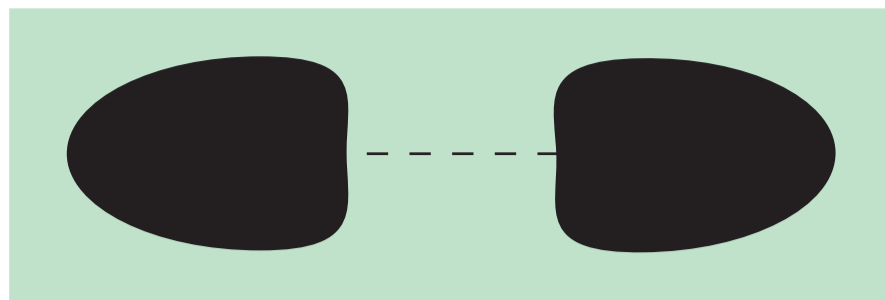
A VALENT U.S.A. COMPANY

ok for ink to bleed off into seal area NO COPY

0.75"
trim
0.625"

10"

.375" seal area



GREEN LIGHT® Grub Control with ARENA®

PRODUCT INFORMATION

HOW IT WORKS

Green Light® Grub Control with Arena® is a broad-spectrum insecticide that kills all white grubs and other listed damaging insects in turfgrass and landscape areas. Apply once per year. Green Light® Grub Control with Arena® kills white grubs before they cause damage to turfgrass when applied in Spring and Summer. Green Light® Grub Control with Arena® also stops damaging levels of grubs when applied in early September.

PESTS CONTROLLED

White Grub Larvae (including Asiatic Garden Beetle, Black Turfgrass Ateneius, Chafers, Green June Beetle, Japanese Beetle, May or June Beetles, and Oriental Beetle), Annual Bluegrass Weevils, Armyworms, Billbugs, Chinch Bugs, Crane-fly Larvae, Cutworms, Mole Crickets, Nuisance Ants (excluding fire, harvester, pharaoh and carpenter ants), Sod Webworms and Spittlebugs

WHERE TO USE

Residential lawns and landscaped areas, around nonbearing fruit and nut trees and shrubs. (Do not use in vegetables gardens.)

WHEN TO USE

- To prevent against insect pests apply in May through early August.
- To treat insect pests apply in mid-August through late September.

AMOUNT OF AREA TREATED

One 12 lb bag covers 5,000 sq ft.

HOW TO USE

Apply as a broadcast application using a rotary spreader or drop spreader to turfgrass (and landscape areas). Water in thoroughly after application. See instructions for other areas.

For Question, Comments or Medical Information Call: (800) 89-VALENT (898-2536)

DIRECTIONS FOR USE

It is a violation of Federal law to use this product in a manner inconsistent with its labeling. Read and follow all label directions.

HOW TO USE

Apply as a broadcast application to turfgrass and landscape areas for control of targeted pests. Use a rotary or drop spreader to broadcast over the treatment area. Optimum control will be achieved when applications are followed by irrigation or rainfall.

AREA COVERED

One 12 lb bag treats up to 5,000 sq ft. Apply 2-3/4 to 3 lbs per 1,000 sq ft. (For example: an area 20 ft by 50 ft equals 1,000 sq ft)

For Application to Lawns

Apply one 12 lb bag evenly over 4,000 to 5,000 sq ft using a rotary spreader or drop spreader. Water in thoroughly after application but not to the point of runoff.

For Application to Flower Beds

For smaller areas: apply 1 tablespoon per 10 sq ft or apply 1 cup per 100 sq ft. (For example: an area 10 ft by 10 ft equals 100 sq ft.)

Apply as a broadcast application to soil and mulched areas. Handheld spreaders or shaker cans are useful for smaller areas. Before application, remove any plastic or weed barrier mats. Rake granules into the soil after application. Water in thoroughly after application but not to the point of runoff.

INSECT PESTS CONTROLLED	APPLICATION RATES	FURTHER INFORMATION
White Grub Larvae (including Asiatic Garden Beetle, Black Turfgrass Ateneius, Chafers, Green June Beetle, Japanese Beetle, May or June Beetles and Oriental Beetle)	One 12 lb bag treats 5,000 sq ft (2-3/4 lbs per 1,000 sq ft)	For Crane-fly Larvae: Apply in the spring, when larvae are mature. Apply when insects first appear. For Mole Crickets: In Florida, apply from early April to early May. In all other states, apply in May to early June.
Annual Bluegrass Weevil Billbugs Crane-fly Larvae Spittlebugs		
Armyworms Chinch Bugs Cutworms Mole Crickets Nuisance Ants Sod Webworms	One 12 lb bag treats 4,000 sq ft (3 lbs per 1,000 sq ft)	

SPREADER SETTINGS

ROTARY SPREADERS (Broadcast Application)

Spreader and Model Number	One 12 lb Bag Treats 5,000 sq ft	One 12 lb Bag Treats 4,000 sq ft	Distance Between Passes (ft)
Earthway Broadcast	12	14	
Earthway Deluxe Broadcast	12	14	
Earthway Ev-N-Spread	12	14	3
Ortho Rotary	3.5	4	6
Precision Rotary	2.5	3	2
Red Devil Rotary	2.5	3	2
Scotts Basic	4	5	
Scotts Deluxe with EdgeGuard	4	5	4
Scotts EasyGreen	22	28	3
Scotts Standard	4	5	
Scotts SpeedyGreen	4	5	4
Sears Rotary	3.5	4	5
Vigoro Rotary	4	4.5	3

DROP SPREADERS

Spreader and Model Number	One 12 lb Bag Treats 5,000 sq ft	One 12 lb Bag Treats 4,000 sq ft
Ortho Drop	7.5	8
Precision Drop	2.75	3
Red Devil Drop	2.75	3
Scotts Accugreen 1000	7	8
Scotts Accugreen 2000	7	8
Scotts Accugreen 3000	7.5	8.25
Sears Drop	7.5	8
Vigoro Drop	2.75	3

Rotary and Drop Spreader Information

- These spreader settings are approximate.
- To protect the environment, do not allow pesticide to enter or run off into storm drains, drainage ditches, gutters or surface waters. Applying this product in calm weather when rain is not predicted for the next 24 hours will help to ensure that wind or rain does not blow or wash pesticide off the treatment area. Sweeping any product that lands on a driveway, sidewalk, or street, back onto the treated area of the lawn or garden will help to prevent run off to water bodies or drainage systems.
- This product is toxic to bees exposed to direct treatment or residues on blooming crops. Do not apply during bloom or when bees are present.
- Apply this product only to your lawn or landscape areas. Sweep any product that lands on the driveway, sidewalk or street back into the treated area.

PRECAUTIONARY STATEMENTS

HAZARDS TO HUMANS & DOMESTIC ANIMALS

CAUTION

Causes moderate eye irritation. Harmful if swallowed, absorbed through skin or inhaled. Avoid contact with eyes, skin or clothing. Avoid breathing spray mist. Wash thoroughly with soap and water after handling.

FIRST AID	
If in eyes:	<ul style="list-style-type: none"> Hold eye open and rinse slowly and gently with water for 15-20 minutes. Remove contact lenses, if present, after the first 5 minutes, then continue rinsing eye. Call a poison control center or doctor for treatment advice.
If swallowed:	<ul style="list-style-type: none"> Call poison control center or doctor immediately for treatment advice. Have person sip a glass of water if able to swallow. Do not induce vomiting unless told to do so by the poison control center or doctor. Do not give anything by mouth to an unconscious person.
If on skin or clothing:	<ul style="list-style-type: none"> Take off contaminated clothing. Rinse skin immediately with plenty of water for 15-20 minutes. Call a poison control center or doctor for treatment advice.
If inhaled:	<ul style="list-style-type: none"> Move person to fresh air. If person is not breathing, call 911 or an ambulance, then give artificial respiration, preferably by mouth-to-mouth, if possible. Call a poison control center or doctor for further treatment advice.
HOT LINE NUMBER	
Have the product container or label with you when calling a poison control center or doctor, or going for treatment. You may also contact 800-892-0099 for emergency medical treatment information.	

ENVIRONMENTAL HAZARDS

This product is toxic to aquatic invertebrates. Drift and runoff may be hazardous to aquatic organisms in neighboring areas. Do not apply where runoff is likely to occur. To protect the environment, do not allow pesticide to enter or run off into storm drains, drainage ditches, gutters or surface waters. Applying this product in calm weather when rain is not predicted for the next 24 hours will help to ensure that wind or rain does not blow or wash pesticide off the treatment area. Sweeping any product that lands on a driveway, sidewalk, or street, back onto the treated area of the lawn or garden will help to prevent run off to water bodies or drainage systems.

This product is toxic to bees exposed to direct treatment or residues on blooming crops. Do not apply during bloom or when bees are present.

STORAGE AND DISPOSAL

Pesticide Storage: Store in original container in a cool dry place, out of reach of children, preferably a locked storage cabinet. Avoid contamination of feed and foodstuffs. Avoid contamination of feed and foodstuffs.

Disposal: Nonrefillable container. Do not reuse or refill this container. Offer for recycling, if available. Triple rinse (or equivalent). Then offer for recycling or reconditioning, or puncture and dispose of in a sanitary landfill, or incineration, or, if allowed by state and local authorities, by burning. If burned, stay out of smoke.

If Partly Filled: Call your local solid waste agency for disposal instructions. Never place unused product down any indoor or outdoor drain.

DISCLAIMER, RISKS OF USING THIS PRODUCT

LIMITED WARRANTY AND LIMITATION OF LIABILITY

IMPORTANT: Read the entire Label including this Disclaimer, Risks of Using this Product, Limited Warranty and Limitation of Liability before using this product. If the terms are not acceptable THEN DO NOT USE THE PRODUCT. Rather, return the unopened product within 15 days of purchase for a refund of the purchase price.

RISKS OF USING THIS PRODUCT

The Buyer and User (referred to collectively herein as "Buyer") of this product should be aware that there are inherent unintended risks associated with the use of this product which are impossible to eliminate. These risks include, but are not limited to, injury to plants to which this product is applied, lack of control of the target pests or weeds, resistance of the target pest or weeds to this product, and injury caused by drift. Such risks of non-performance, resistance or other unintended consequences are unavoidable and may result because of such factors as weather, soil conditions, disease, moisture conditions, irrigation practices, presence of other materials either applied in the tank mix with this product or prior to application of this product, cultural practices or the manner of use or application, (or a combination of such factors) all of which are factors beyond the control of Green Light Company. If the Buyer chooses not to accept these risks, THEN THIS PRODUCT SHOULD NOT BE APPLIED. By applying this product Buyer acknowledges and accepts these inherent unintended risks AND TO THE FULLEST EXTENT ALLOWED BY LAW, AGREES THAT ALL SUCH RISKS ASSOCIATED WITH THE APPLICATION AND USE ARE ASSUMED BY THE BUYER.

Green Light Company shall not be responsible for losses or damages resulting from use of this product in any manner not set forth on the label. Buyer assumes all risks associated with the use of this product in any manner or under conditions not specifically directed or approved on the label.

LIMITED WARRANTY

Green Light Company warrants only that this product conforms to the chemical description on the label and is reasonably fit for the purposes stated in the label, under average use conditions, when used strictly in accordance with the label and subject to the Risks of Using This Product as described above. To the extent consistent with applicable law AND AS SET FORTH ABOVE, GREEN LIGHT COMPANY MAKES NO OTHER WARRANTIES, EITHER EXPRESSED OR IMPLIED. No agent or representative of Green Light Company or Seller is authorized to make or create any other express or implied warranty.

LIMITATION OF LIABILITY

To the fullest extent allowed by law, Green Light Company or Seller is not liable for any incidental, consequential, indirect or special damages resulting from the use or handling of this product. The limitation includes, but is not limited to, increased care, increased finance charges or altered finance ratings, emotional or mental distress and/or exemplary damages. TO THE FULLEST EXTENT ALLOWED BY LAW, THE EXCLUSIVE REMEDY OF THE BUYER, AND THE EXCLUSIVE MAXIMUM LIABILITY OF GREEN LIGHT COMPANY OR SELLER FOR ANY AND ALL CLAIMS, LOSSES, INJURIES OR DAMAGES (INCLUDING CLAIMS BASED ON BREACH OF WARRANTY, CONTRACT, NEGLIGENCE, TORT, STRICT LIABILITY OR OTHERWISE) RESULTING FROM THE USE OR HANDLING OF THIS PRODUCT SHALL BE THE RETURN OF THE PURCHASE PRICE OF THIS PRODUCT OR, AT THE ELECTION OF GREEN LIGHT COMPANY OR SELLER, THE REPLACEMENT OF THE PRODUCT.

PROMPT NOTICE OF CLAIM

Green Light Company must be provided notice as soon as Buyer has reason to believe it may have a claim, but in no event later than twenty-one days from the date of application, so that an immediate inspection of the affected property can be made.

If Buyer does not notify Green Light Company of any claims in such period, it shall be barred from obtaining any remedy.

NO AMENDMENTS

Green Light Company and Seller offer this product, and Buyer accepts it, subject to the foregoing Disclaimer, Risks of Using This Product, Limited Warranty and Limitation of Liability.

Green Light is a registered trademark of Valent U.S.A. Corporation.

Arena is a registered trademark of Sumitomo Chemical Co., LTD.

Manufactured for Green Light, A Valent U.S.A. Company

P. O. Box 17985, San Antonio, TX 78217-0985

www.greenlightco.com (210) 494-3481

Form 7094-A

EPA Reg. No. 59639-164-85827

EPA Est. No. 39578-TX-01



059639-00164-085827.20090317.NOTIF

ok for ink to bleed o into seal area - NO OOPY

Customer's seal area

3.0"

1.0"



INSECT KILLER TREE & SHRUB

CONCENTRATE

INSECTICIDA PARA ÁRBOLES Y ARBUSTOS CONCENTRADO

**FOR RESIDENTIAL USE ON FRUIT & CITRUS
TREES & ORNAMENTALS**

KEEP OUT OF REACH OF CHILDREN
See back panel booklet for additional
precautionary statements.

MANTENER FUERA DEL ALCANCE DE LOS NIÑOS

Consulte el panel posterior para conocer
los avisos de precaucion adicionales.

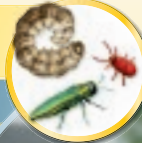
FOR RESIDENTIAL USE IN HOME GARDENS AND ORNAMENTALS

Active Ingredient:	
Spinosad (a mixture of spinosyn A and spinosyn D)	0.5%
Other Ingredients	99.5%
Total	100.0%

Contains: 0.04 lbs. of active ingredient per gallon.
NET CONTENTS / CONTENIDO NETO 16 fl oz (1 pt) / 473 ml



LB66883



**KILLS BEETLES, CATERpillARS,
EMERALD ASH BORERS, &
OTHER LISTED INSECT PESTS**



INSECT KILLER

TREE & SHRUB CONCENTRATE

INSECTICIDA PARA ARBOLES Y ARBUSTOS CONCENTRADO

OPEN
Resealable Label for
Directions & Precautions
Español ver página 15

KILLS INSECTS

Kills ants, Japanese beetles, leafminers, leafrollers, thrips, and worms (caterpillars).
WHERE TO USE: For residential use on vegetables, fruits, nuts, grapes, berries, citrus and ornamentals. **16 fl oz will treat over 2,500 sq ft of garden area.**



Questions & Comments Call 1-800-225-2883
or visit our website at www.ortho.com



The Ortho® Guarantee: If for any reason you, the consumer, are not satisfied with this product, mail us original proof of purchase to obtain a full refund of your purchase price.

©2015 The ORTHO Group.
World rights reserved.
Sold by: **The ORTHO Group**
P.O. Box 190
Marysville, OH 43040
EPA Reg. No. 73327-16-239
EPA Est. No. 239-1A-3,
239-MS-1st
Superscript is first
letter of lot number.



LB6884

FPO

0 71549 03454 2
1005

PRECAUTIONARY STATEMENTS

ENVIRONMENTAL HAZARDS

This product is toxic to bees exposed to treatment for 3 hours following treatment. Do not apply this product to blooming, pollen-shedding, or nectar-producing parts of plants if bees may forage on the plants during this time period. This product is toxic to aquatic invertebrates.

To protect the environment, do not allow pesticide to enter or run off into storm drains, drainage ditches, gutters or surface waters. Applying this product in calm weather when rain is not predicted for the next 24 hours will help to ensure that wind or rain does not blow or wash pesticide off the treatment area. Rinsing application equipment over the treated area will help avoid run off to water bodies or drainage systems.

DIRECTIONS FOR USE:

It is a violation of Federal law to use this product in a manner inconsistent with its labeling. Read all Directions For Use carefully before applying. For residential use in home gardens and ornamentals. Not for use on plants being grown for sale or other commercial use, or for commercial seed production, or for research purposes.

HOW IT WORKS

Ortho® Insect Killer Tree & Shrub Concentrate is a fermentation-derived insect control product intended for control of caterpillars (worms) and other insect pests. This product does not significantly impact beneficial insects while controlling target pests by ingestion and contact activity. Susceptible insect pests may be observed on plants up to several hours after treatment, but will have ceased active feeding before being killed. Allow treated areas to dry before entering. Do not allow children and pets to enter treated areas until dry.

WHERE TO USE

For Use in Vegetable Gardens, Fruit Trees and Ornamentals.

WHEN TO USE

Make applications when listed insect pests are present. Repeat applications may be made as indicated in the Home Gardens section. Time applications to early morning/late evening to minimize the potential for leaf burn.

AMOUNT OF AREA TREATED

In vegetable gardens, use no more than 3 gallons of spray for each 1,000 sq. ft. area.

HOW TO USE

SHAKE WELL BEFORE USING.

- Add the required amount of product to the recommended amount of water, mix thoroughly and apply uniformly to plant foliage to the point of runoff.
- Mix only as much spray as needed for a single treatment.
- Do not store spray solution.

Tank Sprayer

- Add 2 fl. oz. (4Tbs) to 1 gallon of water.



Ortho® Dial 'N Spray®

- Set dial to 2 oz.
- For each gal of spray add 2 fl. oz. (4Tbs) to sprayer jar.
- **DO NOT** add water.
- After spraying, unused product can be poured back into its original container.



1 Tablespoon (Tbs) = 3 teaspoons (tsp)

2 fl. oz. = 4 Tbs

HOME GARDENS

In the state of Georgia, do not apply the product to: broccoli raab, Chinese cabbage (bok choy), collards, kale, mizuna, mustard greens, mustard spinach, rape greens.

Crops	Pests Controlled	Maximum Number of Applications Per Calendar Year	Minimum Days to Wait Before Reapplying	Minimum Days to Wait from Last Application to Harvest
Apple and Other Pome Fruits including crabapples, loquat, mayhaw, pears, and quince	<ul style="list-style-type: none"> • Codling moth • European grapevine moth • Leafminers • Leafrollers • light brown apple moth • oriental fruit moth • thrips • tufted apple budmoth 	6	10	7
Bushberries including blueberry, currant,	<ul style="list-style-type: none"> • armyworms • European grapevine moth 	6	6	3

HOME GARDENS (continued)

Crops	Pests Controlled	Maximum Number of Applications Per Calendar Year	Minimum Days to Wait Before Reapplying	Minimum Days to Wait from Last Application to Harvest
Bushberries (continued) elderberry, gooseberry, huckleberry, juneberry, lingonberry, and sakai	<ul style="list-style-type: none"> • fireworms • fruitfly (suppression) • fruitworms • leafrollers • light brown apple moth • loopers • thrips 	6	6	3
Caneberries including blackberry, black raspberry, loganberry, red raspberry, and cultivars and/or hybrids of these	<ul style="list-style-type: none"> • armyworms • European grapevine moth • fireworms • fruitworms • leafrollers • light brown 	6	5	1

HOME GARDENS (continued)

Crops	Pests Controlled	Maximum Number of Applications Per Calendar Year	Minimum Days to Wait Before Reapplying	Minimum Days to Wait from Last Application to Harvest
Caneberries (continued)	• apple moth • loopers • sawfly	6	5	1
Citrus Trees including grapefruit, lemons, limes, oranges, and tangerines (to prevent fruit scaring from thrips, treat when fruit is marble size)	• katydids • leafminers • thrips • worms (caterpillars)	6	6	1
Grape	• European grapevine	6	5	7

HOME GARDENS (continued)

Crops	Pests Controlled	Maximum Number of Applications Per Calendar Year	Minimum Days to Wait Before Reapplying	Minimum Days to Wait from Last Application to Harvest
Grape (continued)	<ul style="list-style-type: none"> • moth • leafrollers • light brown apple moth • thrips • worms (berry moth) 	6	5	7
Peppermint and Spearmint	<ul style="list-style-type: none"> • armyworms • cutworms • leafminers • loopers • thrips (suppression) 	4	4	7
Pomegranate	<ul style="list-style-type: none"> • fruit fly • leafrollers • moths 	3	10-14	7

HOME GARDENS (continued)

Crops	Pests Controlled	Maximum Number of Applications Per Calendar Year	Minimum Days to Wait Before Reapplying	Minimum Days to Wait from Last Application to Harvest
Pomegranate (continued)	<ul style="list-style-type: none"> • naval orangeworm • peach twig borer • thrips 	3	10-14	7
Stone Fruits including apricot, cherries, nectarine, peach, plum, and prune	<ul style="list-style-type: none"> • borers • European grapevine moth • fruit flies • fruitworm • leafminers • leafrollers • light brown apple moth • oriental fruit moth 	6	7	apricot, all except cherry, peach, plum, prune, nectarine, 14 cherry, plum, prune, 7 nectarine, peach, 1

HOME GARDENS (continued)

Crops	Pests Controlled	Maximum Number of Applications Per Calendar Year	Minimum Days to Wait Before Reapplying	Minimum Days to Wait from Last Application to Harvest
Stone Fruits (continued)	<ul style="list-style-type: none"> • thrips • worms (caterpillars) 	6	7	apricot, all except cherry, peach, plum, prune, nectarine, 14 cherry, plum, prune, 7 nectarine, peach, 1
Strawberries	<ul style="list-style-type: none"> • armyworms • European grapevine moth • Leafrollers • light brown apple moth • thrips 	5	5	1

HOME GARDENS (continued)

Crops	Pests Controlled	Maximum Number of Applications Per Calendar Year	Minimum Days to Wait Before Reapplying	Minimum Days to Wait from Last Application to Harvest
Tree Nuts including almonds, cashew, chestnut, filbert (hazelnut), macadamia, pecans, pistachio, and walnuts	<ul style="list-style-type: none"> • codling moth • filbert worm • husk fly (suppression) • leafrollers • light brown apple moth • navel orange-worms • peach twig borer • pecan nut casebearer • redhumped caterpillar • shuckworms • webworms 	5	7	1

HOME GARDENS (continued)

Crops	Pests Controlled	Maximum Number of Applications Per Calendar Year	Minimum Days to Wait Before Reapplying	Minimum Days to Wait from Last Application to Harvest
Tropical Tree Fruits including avocado, custard apple, guava, lychee, mango, papaya, passionfruit, Spanish lime, star apple, starfruit, and sugar apple	<ul style="list-style-type: none"> • suppression of European grapevine moth • katydids • light brown apple moth • thrips • worms (caterpillars) 	4	7	1

ORNAMENTALS

Use Site	Pests Controlled	Directions
Outdoor Ornamentals (herbaceous and woody plants)	<ul style="list-style-type: none">- Emerald Ash Borer¹- Gall midges- Leaf feeding beetles- Leafminers- Sawfly larvae- Spider mites²- Thrips- Worms including loopers, webworms, bagworms, gypsy moth and tent caterpillars.	Mix 2 fl oz of product per gallon of water and uniformly spray foliage to point of runoff. Uniform coverage of upper and lower leaf surfaces is essential for effective insect control.

¹ Mix 5 fl oz of the product per gallon of spray and apply to foliage and bark of the tree when adult emerald ash borer are first observed emerging from the bark or when adult emerald ash borer are first noticed feeding on the leaves of the tree. Reapply every 7 to 10 days until no additional adult emerald ash borer activity is observed. Applications to trees already heavily infested may not prevent the eventual loss of the tree due to existing pest damage.

² Apply when spider mites are first observed prior to webbing and before mite populations have become severe. Reapply after 7 to 10 days (3 to 5 days in greenhouses and structures that can be altered to be closed or open) to contact newly hatched nymphs and repeat until infestation is managed.
Uniform coverage of both upper and lower leaf surfaces is critical.

STORAGE AND DISPOSAL

PESTICIDE STORAGE:	Store in original container in a cool dry place, out of reach of children, preferably a locked storage cabinet. Avoid contamination of feed and foodstuffs.
PESTICIDE DISPOSAL AND CONTAINER HANDLING:	Nonrefillable container. Do not reuse or refill this container. If empty: place in trash or offer for recycling. If Partly Filled: Call your local solid waste agency for disposal instructions. Never place unused product down any indoor or outdoor drain.

Notice: To the extent consistent with applicable law, buyer assumes all risks of use, storage or handling of this product not used in accordance with directions.



AVISOS DE PRECAUCIÓN

RIESGOS AMBIENTALES

Este producto es tóxico para las abejas expuestas al tratamiento hasta por tres horas después del tratamiento. No aplique este producto a las partes de la planta que estén en floración, que desprendan polen o que produzcan néctar si las abejas pudieran estar buscando alimento en ellas durante este período de tiempo. Este producto es tóxico para los invertebrados acuáticos. Para proteger el medio ambiente, no permita que el pesticida caiga o se escurra hacia drenajes pluviales, cunetas de desagüe, canaletas o aguas superficiales. Aplicar este producto con un clima tranquilo, cuando no se pronostiquen lluvias durante las próximas 24 horas, ayudará a asegurar que ni el viento ni la lluvia arrastren el pesticida lejos del área tratada. Enjuagar el equipo de aplicación sobre el área de tratamiento ayudará a evitar que se escurra a los cuerpos de agua o sistemas de drenaje.

MODO DE EMPLEO:

Se considera una violación a la ley federal usar este producto de manera distinta a la indicada en la etiqueta. Lea todas las instrucciones antes de aplicarlo. Para uso residencial en jardines caseros y plantas ornamentales. No lo utilice en plantas cultivadas para su venta u otros usos comerciales, ni para la producción de semilla comercial o con fines de investigación.

CÓMO FUNCIONA

El insecticida para árboles y arbustos de ORTHO® concentrado es un producto para el control de insectos fermentado, que está indicado para el control de orugas (gusanos) y otras plagas de insectos. El producto no afecta de forma significativa a los insectos benéficos al controlar a las plagas seleccionadas mediante las actividades de ingestión y contacto. Se puede observar a las plagas de insectos susceptibles en las plantas hasta por varias horas después del tratamiento, pero habrán cesado la alimentación activa antes de morir. Deje que se sequen las áreas tratadas antes de entrar. No permita que los niños o las mascotas ingresen al área tratada hasta que esté seca.

DÓNDE USAR

Para uso en jardines de vegetales, árboles frutales y plantas ornamentales.

CUÁNDO USAR

Haga aplicaciones cuando las plagas de insectos enumerados estén presentes. Se puede repetir la aplicación del producto como se indica en la sección Jardines domésticos. Aplique temprano en la mañana o tarde por la noche para minimizar la posibilidad de quemar las hojas.

ÁREA TRATADA

En jardines de vegetales no use más de 11.36 litros del rocío por cada área de 92.9 metros cuadrados.

CÓMO USAR

AGITE BIEN ANTES DE USAR.

- Añada la cantidad necesaria de producto a la cantidad recomendada de agua. Mezcle bien y aplique uniformemente al follaje de la planta hasta el punto que escurre.
- Mezcle únicamente tanta solución para rocío como sea necesaria para un solo tratamiento.
- No almacene la solución de rocío.

Rociador con depósito

- Añada 59 ml (4 cucharadas) por cada 3.79 l de agua.



Aplicador ORTHO® Dial 'N Spray®

- Coloque el disco selector en 2 oz (59 ml).
- Por cada 3.79 l de rocío agregue 59 ml (4 cucharadas) al bote del rociador.
- **NO** agregue agua.
- Después de rociar, el producto sin usar se puede echar de regreso en su envase original.



1 cucharada (cda.) = 3 cucharaditas (cdtas.) 59 ml = 4 cdtas.

JARDINES DOMÉSTICOS

En el estado de Georgia, no aplique este producto a: brócoli rabé, col china (bok choy), coles, col rizada, mizuna, hojas de mostaza, espinaca japonesa, hojas de colza.

Cosechas	Plagas controladas	Máximo de aplicaciones por año calendario	Mínimo de días de espera antes de volver a aplicar	Mínimo de días de espera para cosechar después de la última aplicación
Manzanas y otros frutos pomos, incluyendo manzanos silvestres, nisperos japoneses, espinos de mayo, peras y membrillos	<ul style="list-style-type: none">• Polillas de las manzanas y las peras• Polilla europea de la vid• Gusanos minadores• Polillas lepidópteras• Palomilla marrón de la manzana• Polilla de fruta oriental• Tripidos• Polilla copetuda de la manzana	6	10	7

JARDINES DOMÉSTICOS (continúa)

Cosechas	Plagas controladas	Máximo de aplicaciones por año calendario	Mínimo de días de espera antes de volver a aplicar	Mínimo de días de espera para cosechar después de la última aplicación
Bayas de arbusto, incluyendo arándano, grosella, saúco, grosella espinosa, arándano azul oscuro, baya de junco, arándano rojo y salal	<ul style="list-style-type: none"> • Gusanos soldado • Polilla europea de la vid • Gusanos de fuego • Mosca de la fruta (supresión) • Gusanos de la fruta • Polillas lepidópteras • Palomilla marrón de la manzana • Gusanos 	6	6	3

JARDINES DOMÉSTICOS (continúa)

Cosechas	Plagas controladas	Máximo de aplicaciones por año calendario	Mínimo de días de espera antes de volver a aplicar	Mínimo de días de espera para cosechar después de la última aplicación
Bayas de arbusto (continúa)	medidores • Tripidos	6	6	3
Zarzas y frambuesas, incluyendo zarzamora, frambuesa negra, zarza de Logan, frambuesa roja, y variedades cultivadas y/o híbridos de éstas	• Gusanos soldado • Polillas europeas de la vid • Gusanos de fuego • Gusanos de la fruta • Polillas lepidópteras • Palomillas marrónes de la manzana • Gusanos	6	5	1

JARDINES DOMÉSTICOS (continúa)

Cosechas	Plagas controladas	Máximo de aplicaciones por año calendario	Mínimo de días de espera antes de volver a aplicar	Mínimo de días de espera para cosechar después de la última aplicación
Zarzas y frambuesas (continúa)	medidores • Moscas de sierra	6	5	1
Árboles cítricos , incluyendo toronjas, limones, limas, naranjas y mandarinas (para evitar las cicatrices cuasadas por tripidos trate cuando la fruta sea el tamaño de una canica)	• Saltamontes longicornios • Gusanos minadores • Tripidos • Gusanos (orugas)	6	6	1

JARDINES DOMÉSTICOS (continúa)

Cosechas	Plagas controladas	Máximo de aplicaciones por año calendario	Mínimo de días de espera antes de volver a aplicar	Mínimo de días de espera para cosechar después de la última aplicación
Uvas	<ul style="list-style-type: none"> • Polilla europea de la vid • Polillas lepidópteras • Palomilla marrón de la manzana • Tripsidos • Gusanos (polilla de la uva) 	6	5	7
Hierbabuena y menta verde	<ul style="list-style-type: none"> • Gusanos soldado • Gusanos cortadores • Gusanos 	4	4	7

JARDINES DOMÉSTICOS (continúa)

Cosechas	Plagas controladas	Máximo de aplicaciones por año calendario	Mínimo de días de espera antes de volver a aplicar	Mínimo de días de espera para cosechar después de la última aplicación
Hierbabuena y menta verde (continúa)	<ul style="list-style-type: none"> • minadores • Gusanos medidores • Tripidos (supresión) 	4	4	7
Granada	<ul style="list-style-type: none"> • Moscas de la fruta • Polillas lepidópteras • Polillas • Gusanos de naranja navel • Barrenadores de la ramilla del melocotón • Tripidos 	3	10-14	7

JARDINES DOMÉSTICOS (continúa)

Cosechas	Plagas controladas	Máximo de aplicaciones por año calendario	Mínimo de días de espera antes de volver a aplicar	Mínimo de días de espera para cosechar después de la última aplicación
Frutas de hueso, incluyendo albaricoques, cerezas, nectarinas, durazno, ciruelas y ciruelas pasas	<ul style="list-style-type: none"> • Barrenadores • Polilla europea de la vid • Moscas de la fruta • Gusanos de la fruta • Gusanos minadores • Polillas lepidópteras • Palomilla marrón de la manzana • Polilla de fruta oriental • Tripidos 	6	7	Albaricoques, todos excepto cerezas, duraznos, ciruelas, ciruelas pasas, nectarinas, 14; cerezas, ciruelas, ciruelas pasas, 7; nectarinas, duraznos, 1

JARDINES DOMÉSTICOS (continúa)

Cosechas	Plagas controladas	Máximo de aplicaciones por año calendario	Mínimo de días de espera antes de volver a aplicar	Mínimo de días de espera para cosechar después de la última aplicación
Frutas de hueso (continúa)	• Gusanos (orugas)	6	7	Albaricoques, todos excepto cerezas, duraznos, ciruelas, ciruelas pasas, nectarinas, 14; cerezas, ciruelas, ciruelas pasas, 7; nectarinas, duraznos, 1
Fresas	• Gusanos soldado	5	5	1

JARDINES DOMÉSTICOS (continúa)

Cosechas	Plagas controladas	Máximo de aplicaciones por año calendario	Mínimo de días de espera antes de volver a aplicar	Mínimo de días de espera para cosechar después de la última aplicación
Fresas (continúa)	<ul style="list-style-type: none"> • Polilla europea de la vid • Polillas lepidópteras • Palomilla marrón de la manzana • Tripsidos 	5	5	1
Nueces de árbol, incluyendo almendras, anacardos o nueces de la India,	<ul style="list-style-type: none"> • Polilla de las manzanas y las peras • Gusanos de la avellana 	5	7	1

JARDINES DOMÉSTICOS (continúa)

Cosechas	Plagas controladas	Máximo de aplicaciones por año calendario	Mínimo de días de espera antes de volver a aplicar	Mínimo de días de espera para cosechar después de la última aplicación
Nueces de árbol (continúa) castañas, avellanas, macadamias, pecanas, pistachos y nueces de nogal	<ul style="list-style-type: none"> • Moscas de la cáscara de nuez (supresión) • Polillas lepidópteras • Palomilla marrón de la manzana • Gusanos de naranja navel • Barrenadores de la ramilla del melocotón • Portadores de la pecana • Gusano rojo 	5	7	1

JARDINES DOMÉSTICOS (continúa)

Cosechas	Plagas controladas	Máximo de aplicaciones por año calendario	Mínimo de días de espera antes de volver a aplicar	Mínimo de días de espera para cosechar después de la última aplicación
Nueces de árbol (continúa)	<ul style="list-style-type: none"> • Barrenadores del ruezno de la nuez • Gusanos telerañeros 	5	7	1
Frutas de árboles tropicales, incluyendo aguacate, chirimoya, guayabá, lichi, mango, papaya, maracuyá, mamón, caimito, carambola y saramuyo	<ul style="list-style-type: none"> • Supresión de la polilla europea de la vid • Saltamontes longicornios • Palomilla marrón de la manzana • Tripidos • Gusanos (orugas) 	4	7	1

PLANTAS ORNAMENTALES

Sitio de uso	Plagas controladas	Instrucciones
Plantas ornamentales en exteriores (plantas leñosas y herbáceas)	<ul style="list-style-type: none">• Barrenadores esmeraldas del fresno¹• Moscas de las agallas• Escarabajos de las hojas• Gusanos minadores• Larvas de mosca sierra• Arañuelas rojas²• Tripidos• Gusanos, incluyendo gusanos medidores, gusanos peludos, orugas de bolsón, polilla gitana y gusanos tenderos.	Mezcle 59 ml del producto por 3.79 l de agua y rocíe uniformemente el follaje hasta el punto que oscurea. Una cobertura uniforme de las superficies superior e inferior de la hoja es esencial para el control eficaz de insectos.

¹ Mezcle 148 ml del producto por 3.79l del rocío y aplique al follaje y la corteza del árbol al observar que los adultos barrenadores esmeraldas del fresno salen por primera vez de la corteza o se alimentan de las hojas del árbol. Vuelva a aplicar cada 7 a 10 días hasta que no se observe más actividad del barrenador esmeralda adulto. Es posible que a la larga no pueda salvarse a los árboles sumamente infestados aunque se aplique el producto, debido al daño ya ocasionado por la plaga.

² Aplique en cuanto observe a las arañuelas rojas antes de que formen telarañas y de que el tamaño de su población se vuelva un problema. Vuelva a aplicar después de 7 a 10 días (3 a 5 días en invernaderos y estructuras que se pueden modificar para cerrarse o abrirse) para que entre en contacto con ninfas recién incubadas y repita hasta que la infestación esté bajo control. **Una cobertura uniforme de las superficies inferior y superior de la hoja es clave.**

ALMACENAMIENTO Y ELIMINACIÓN

ALMACENAMIENTO DEL PESTICIDA:	Almacene en el envase original en un lugar frío y seco. Almacene fuera del alcance de los niños, preferiblemente en un área de almacenamiento bajo llave. Evite la contaminación de alimentos para animales.
ELIMINACIÓN DEL PESTICIDA Y MANEJO DEL ENVASE:	Envase no reutilizable. No vuelva a utilizar o llenar este envase. Si está vacío: Colóquelo en la basura o recíclolo. Si está parcialmente lleno: Llame a su agencia de desechos sólidos local para obtener instrucciones sobre cómo eliminar el producto. Nunca elimine el producto no utilizado en drenajes internos o externos.

AVISO: En la medida contemplada por las leyes aplicables, el comprador asume todos los riesgos de uso, almacenamiento o manejo de este producto si no se siguen las instrucciones.



Si por alguna razón usted, el consumidor, no está satisfecho con este producto, envíenos por correo el comprobante original de compra para obtener un reembolso completo de su precio de compra.

PRECAUTIONARY STATEMENTS

ENVIRONMENTAL HAZARDS

This product is toxic to bees exposed to treatment for 3 hours following treatment. Do not apply this product to blooming, pollen-shedding, or nectar-producing parts of plants if bees may forage on the plants during this time period. This product is toxic to aquatic invertebrates. To protect the environment, do not allow pesticide to enter or run off into storm drains, drainage ditches, gutters or surface waters. Applying this product in calm weather when rain is not predicted for the next 24 hours will help to ensure that wind or rain does not blow or wash pesticide off the treatment area. Rinsing application equipment over the treated area will help avoid run off to water bodies or drainage systems.

STORAGE AND DISPOSAL

PESTICIDE STORAGE:	Store in original container in a cool dry place, out of reach of children, preferably a locked storage cabinet. Avoid contamination of feed and foodstuffs.
PESTICIDE DISPOSAL AND CONTAINER HANDLING:	Nonrefillable container. Do not reuse or refill this container. If empty, place in trash or offer for recycling. If Partly Filled: Call your local solid waste agency for disposal instructions. Never place unused product down any indoor or outdoor drain.

NOTICE: To the extent consistent with applicable law, buyer assumes all risks of use, storage or handling of this product not used in accordance with directions.



If for any reason you, the consumer, are not satisfied with this product, mail us original proof of purchase to obtain a full refund of your purchase price.

©2015 The ORTHO Group. World rights reserved.
Sold by: **The ORTHO Group**
P.O. Box 190
Marysville, OH 43040

LB6884
EPA Reg. No. 73327-16-239
EPA Est. No. 239-4A-3; 239-MS-1^M
Superscript is first letter of lot number.



FLOWER, FRUIT & VEGETABLE

INSECT KILLER CONCENTRATE

INSECTICIDA PARA
FLORES, FRUTAS Y VERDURAS



KILLS 100+ LISTED INSECTS FAST*
*VISIBLE RESULTS IN 24 HOURS

**KEEP OUT OF REACH OF CHILDREN
CAUTION** See back panel booklet for additional
precautionary statements.

**MANTENGA FUERA DEL ALCANCE DE LOS NIÑOS
PRECAUCION** Consulte el folleto en el panel posterior para
conocer los avisos de precaucion adicionales.

**FOR RESIDENTIAL INDOOR & OUTDOOR USE ONLY
NOT FOR COMMERCIAL PRODUCTION**

Active Ingredient	
Acetamiprid.....	0.5%
Other Ingredients:	99.5%
Total.....	100.0%



LB3987

NET CONTENTS/CONTENIDO NETO 32 fl oz (946 ml)





FLOWER, FRUIT & VEGETABLE

INSECT KILLER

CONCENTRATE INSECTICIDA PARA FLORES, FRUTAS Y VERDURAS

OPEN
Resealable
Label for
Directions &
Precautions

Español ver
página 10

Won't Harm Plants or Blooms

KILLS 100+ LISTED INSECTS FAST* *Visible Results In 24 Hours



WHERE TO USE:



HOW TO APPLY:



WHEN TO APPLY:

Apply as soon as insect problems are noticed.

 **Questions, Comments or Medical Information**
Preguntas, comentarios o información médica
1-800-225-2883 www.ortho.com

FPO

0 71549 03490 0
1010

©2013 The ORTHO Group.
World rights reserved.
Sold by **The ORTHO Group**
P.O. Box 190
Marysville, OH 43040






EPA Reg. No. 8033-107-239
EPA Est. No. 239-4A-3I, 58996-MO-1A,
085652-OH-1W, 239-MS-001M
Superscript is first letter of lot number.
Product of Japan. LB3965

DIRECTIONS FOR USE

It is a violation of Federal Law to use this product in a manner inconsistent with its labeling.

IMPORTANT APPLICATION INFORMATION

- For indoor and outdoor residential use sites only.
- Not for commercial production.
- Do not apply this product in a way that the spray will contact persons, either directly or through drift.
- Keep children and pets out of treated areas until sprays have thoroughly dried.
- When applying outdoors:
 - Do not apply if wind speed exceeds 10 mph.
 - Always stand “up wind” when applying this product.

HOW TO APPLY	<p>Tank Sprayer Shake container gently before using.</p> <ul style="list-style-type: none"> • Mix 1.5 fl. oz. of product per gallon of water. • Hold sprayer 8 to 12 inches from the area to be treated. • Direct spray toward the upper and lower leaf surfaces and stems where the pests appear. <p>Spray only until the surface of the foliage is wet.</p>
	<p>Ortho® Dial 'N Spray® Applicator Shake container gently before using.</p> <ul style="list-style-type: none"> • Set dial to 1.5 fl. oz. • Pour product into jar to full or one-half full. • DO NOT add water. • Attach hose to the sprayer. • Hold sprayer 8 to 12 inches from the area to be treated. • Direct spray toward the upper and lower leaf surfaces and stems where the pests appear. <p>Spray only until the surface of the foliage is wet. Pour unused product back into its original container.</p> <p>Do not use Ortho® Dial 'N Spray® Applicator indoors</p>
HOW TO APPLY	<p>Ortho® Dial 'N Spray® with Direct Connect </p>
PREPARE APPLICATOR	<ul style="list-style-type: none"> • Set dial to 1.5 fl. oz.
CONNECT	<ul style="list-style-type: none"> • Remove cap from the concentrate bottle. Keep cap for storage. • Insert suction tube into bottle opening and twist the Ortho® Dial 'N Spray® applicator onto bottle to attach. • Connect hose to the sprayer and turn on water. 
SPRAY	<ul style="list-style-type: none"> • Hold 8 to 12 inches from the area to be treated. • Direct spray toward the upper and lower leaf surfaces and stems where the pests appear. • Spray only until the surface of the foliage is wet. 



FINISH

- After use, untwist to remove the Ortho® Flower, Fruit & Vegetable Insect Killer Concentrate bottle from the Ortho® Dial 'N' Spray® applicator.
- Replace cap on the Ortho® Flower, Fruit & Vegetable Insect Killer Concentrate bottle.

Important: To prevent sprayer from clogging, always clean after use as directed.

GARDENS

TO KILL THESE INSECTS	<p>Aphids (including Green Peach, Wooly, Melon, and Cotton), Army Worms (including Fall Army Worm, and Southern Army Worm), Banded Grape Bug, Beetles (including Bean Leaf Beetle, Colorado Potato Beetle, Flea Beetle, Japanese Beetle, Mexican Bean Beetle and Oriental Beetle), Cucumber Beetle (including Spotted, Striped and Western Striped), Bollworm, Borers (including Dogwood Borer, European Corn Borer, Peach Twig Borer and Squash Vine Borer), Budworm (including Tobacco Bud Worm), Caterpillars (including Red Humped Caterpillar, Tomato Fruitworm, and Cabbage Looper), Rose Chafer, Plum Curculio, European Chafer, European Pine Sawfly, Filbertworm, Flea Hopper, Fruit Fly (including Cherry, Black Cherry and Western Cherry), Western Grapeleaf Skeletonizer, Hickory Shuckworm, Hornworms, Katydid, Phylloxera (aerial form only), Leafhoppers (including Glassy Wing Sharpshooter and Potato Leaf Hopper), Leaf Miners (including Chrysanthemum, Citrus, and Tentiform), Lesser Apple Worm, Apple Maggot, Mealybugs (including Citrus, Grape, Obscure, Longtail, Pink Hibiscus, and Maderia), Melonworm, Moths (including Codling, Diamondback Moth, Gypsy Moths and Oriental Fruit Moth), Navel Orangeworm, Pecan Nut Casebearer, Pickleworm, Plantbugs (including Tarnished, and Mulin Plant Bug), Psyllids, European Apple Sawfly, Scale (including Asian Cycad Scale, Caribbean Black Scale, California Red Scale, Citricola Scale, Cottony Maple Scale, Euonymus Scale, Fletcher Scale, Florida Wax Scale, Green Shield Scale, Indian Wax Scale, Oyster Shell Scale, Pine Needle Scale, Red Scale, San Jose Scale and Tea Scale), Squash Bug, Stinkbug, Swede Midge, Thrips (including Citrus, Cotton, Palm, and Western Flower), Weevils (including Pecan Weevil, Pepper Weevil and Strawberry Weevil), Whiteflies (including Greenhouse, Sweet Potato, Silverleaf, Banded and Giant)</p>
ON THESE PLANTS	Ornamentals, Roses, Flowers, Trees, Shrubs
USE THIS AMOUNT	1.5 fl. oz. per gallon Ortho® Dial 'N' Spray® setting is 1.5 fl. oz.
WHEN TO APPLY	Apply as soon as insect problems are noticed. Wait 1 to 4 weeks to re-apply if insect problems reappear. Do not apply more than 5 times in a season.

EDIBLES

TO KILL THESE INSECTS	<p>Aphids (including Green Peach, Woolly, Melon, and Cotton), Army Worms (including Fall Army Worm, and Southern Army Worm), Asian Citrus Psyllid, Banded Grape Bug, Beetles (including Bean Leaf Beetle, Colorado Potato Beetle, Flea Beetle, Japanese Beetle, Mexican Bean Beetle, Sap Beetle, and Oriental Beetle), Blueberry Maggot, Blueberry Gall Midge, Cucumber Beetle (including Spotted, Striped and Western Striped), Budworm (including Tobacco Bud Worm), Caterpillars (including Red Humped Caterpillar, Tomato Fruitworm, Cherry Fruitworm, Cranberry Fruitworm, Cranberry Tipworm, Sparganothis Fruitworm, Western Raspberry Fruitworm (adult) and Cabbage Looper), Rose Chafer, Plum Curculio, Filbertworm, Flea Hopper, Fruit Fly (including Cherry, Black Cherry and Western Cherry), Hickory Shuck Worm, Western Grapeleaf Skeletonizer, Hornworms, Katydid, Phloxera (aerial form only), Grape Cane Girdler, Leafhoppers (including Glassy Wing Sharpshooter, Grape, Variegated, and Potato Leaf Hopper), Leaf Miners (including Chrysanthemum, Citrus, and Tentiform), Lesser Apple Worm, Apple Maggot, Mealybugs (including Citrus, Gill's, Grape, Obscure, Longtail, Pink Hybiscus, and Maderia), Melonworm, Moths (including Codling, Diamondback Moth, Gypsy Moths and Oriental Fruit Moth), Oblique Banded Leaf Roller, Navel Orangeworm, Peach Twig Borer, Pecan Nut Casebearer, Pickleworm, Plantbugs (including Tarnished, and Mulein Plant Bug), Psyllids, European Apple Sawfly, Scale (including Asian Cycad Scale, Caribbean Black Scale, California Red Scale, Citricola Scale, Cottony Maple Scale, Eucynymus Scale, Fletcher Scale, Florida Wax Scale, Green Shield Scale, Indian Wax Scale, Oyster Shell Scale, Pine Needle Scale, Red Scale, San Jose Scale and Tea Scale), Spanworm, Spittlebug, Squash Bug, Squash Vine Borer, Stinkbug, Strawberry Rootworm, Thrips (including Citrus, Cotton, Palm, and Western Flower), Walnut Husk Fly, Weevils (including Pecan Weevil, Pepper Weevil and Strawberry Weevil), Whiteflies (including Greenhouse, Sweet Potato, Silverleaf, Banded and Giant)</p>
ON THESE PLANTS	<p>Vegetables: Amaranth, Arrugula, Broccoli, Brussels Sprouts, Cabbage, Cardoon, Cauliflower, Celery, Celtuce, Chervil, Chrysanthemum (edible leaves, garland), Collards, Corn Salad, Cress (garden, upland), Dandelion, Dock, Eggplant, Endive, Florence Fennel, Groundcherry, Kale, Kohlrabi, Lettuce (head, leaf), Mizuna, Mustard Greens, Mustard Spinach, Orach, Parsley, Pepino, Pepper (bell pepper, chili pepper, cooking pepper, pimento, sweet pepper), Purslane (garden, winter), Radicchio, Rape Greens, Rhubarb, Spinach (leaf, vine, New Zealand), Swiss Chard, Tomatillo, Tomato</p> <p>Citrus Fruits: Calamondin, Citrus hybrids (chironja, tangelo, tangor), Grapefruit, Kumquat, Lemon, Lime, Mandarin (tangerine), Orange (sour, sweet), Pummelo, Satsuma mandarin</p> <p>Pome Fruits: Apple, Crabapple, Loquat, Mayhaw, Pear, Quince</p> <p>Grapes and Other Climbing Vine Small Fruit (except fuzzy kiwifruit): Gooseberry, Hardy Kiwifruit, Amur River Grape, Maypop, Schisandra Berry</p>

EDIBLES

<p>ON THESE PLANTS</p>	<p>Tuberous and Corm Vegetables: Potato, Sweet Potato, Arracacha, Arrowroot, Artichoke (Chinese and Jerusalem), Edible Canna, Cassava (Bitter and Sweet), Chayote (Root), Chufa, Sasheen, Ginger, Leren, Tanier, Tumeric, Yam Bean, True Yam</p> <p>Stone Fruit: Apricot, Cherry (Sweet and Tart), Nectarine, Peach, Plum (Chickasaw, Damson, Japanese), Plumcot, Prune (Fresh)</p> <p>Cucurbits: Chayote (fruit), Chinese waxgourd (Chinese preserving melon), Citron melon, Cucumber, Gherkin, Gourd (edible), <i>Mormordica</i> spp., Muskmelon (hybrid and/or cultivars of <i>Cucumis melo</i> including true cantaloupe, cantaloupe, casaba, crenshaw melon, golden pershaw melon, honeydew melon, honey balls, mango melon, Persian melon, pineapple melon, Santa Claus melon, and snake melon), Pumpkin, Squash (summer and winter), Watermelon</p> <p>Tree Nuts: Almond, Beech nut, Brazil nut, Butternut, Cashew, Chestnut, Chinquapin, Filbert (hazelnut), Hickory nut, Macadamia (bush nut), Pecan, Pistachio, Walnut (black and English [Persian])</p> <p>Edible Podded Legume Vegetables and Succulent Shelled Peas and Beans: Bean (<i>Phaseolus</i> spp.) (includes runner bean, snap bean, wax bean, lima bean [green]); Bean (<i>Vigna</i> spp.) (includes asparagus bean, Chinese longbean, moth bean, yardlong bean, blackeyed pea, cowpea, southern pea); Jackbean; Broad Bean (succulent); Pea (<i>Pisum</i> spp.) (includes dwarf pea, edible-pod pea, snow pea, sugar snap pea, English pea, garden pea, green pea); Soybean (immature seed); Sword Bean; and Pigeon Pea</p> <p>Strawberries and Other Low Growing Berries: Bearberry; Bilberry; Lowbush Blueberry; Cloudberry; Cranberry; Lingonberry; Muntries; Partridgeberry; and cultivars, varieties, and/or hybrids of these</p> <p>Blueberries and Other Bush and Cane Berries: Aronia berry; blueberry, highbush and lowbush; buffalo currant; Chilean guava; currant, red and black; elderberry; European barberry; gooseberry; cranberry, highbush; edible honeysuckle; huckleberry; jostaberry; Juneberry; lingonberry; natie currant; salal sea buckthorn; and cultivars, varieties, and/or hybrids of these; and, Blackberry, Loganberry, Raspberry (black and red), wild raspberry, and cultivars, varieties, and/or hybrids of these</p> <p>Onions and Other Bulb Vegetables: Chives, fresh leaves; Chinese chives, fresh leaves; daylily bulbs, Elegans hosta, Fritillaria leaves and bulbs; bulb garlic; great headed bulb garlic; serpent bulb garlic; kurrat; lady's leek; leek; wild leek; lily bulb; Beltsville bunching onion; bulb onion; Chinese bulb onion; fresh onion; green onion; macrostem onion; pearl onion; potato bulb onion; treetops onion; Welsh onion tops; shallot bulb and fresh leaves; and cultivars, varieties, and/or hybrids of these</p>
<p>USE THIS AMOUNT</p>	<p>1.5 fl. oz. per gallon Ortho® Dial 'N Spray® setting is 1.5 fl. oz.</p>
<p>WHEN TO APPLY</p>	<p>Apply as soon as insect problems are noticed.</p>

	Days to Wait to Harvest	Days to Wait Before Reapplication	Maximum Number of Applications per Season
Amaranth, Arrugula, Broccoli, Brussels Sprouts, Cabbage, Cardoon, Cauliflower, Celery, Celtuce, Chervil, Chrysanthemum (edible leaved, garland), Collards, Corn Salad, Cress (garden, upland), Dandelion, Dock, Eggplant, Endive, Florence Fennel, Groundcherry, Kale, Kohlrabi, Lettuce (head, leaf), Mizuna, Mustard Greens, Mustard Spinach, Orach, Parsley, Pepino, Pepper (bell pepper, chili pepper, cooking pepper, pimento, sweet pepper), Purslane (garden, winter), Radicchio, Rape Greens, Rhubarb, Spinach (leaf, vine, New Zealand), Swiss Chard, Tomato, Tomato, Potato, Sweet Potato, Arracacha, Arrowroot, Artichoke (Chinese and Jerusalem), Edible Canna, Cassava (Bitter and Sweet), Chayote (Root), Chufa, Sasheen, Ginger, Leren, Tanier, Tumeric, Yam Bean, True Yam, Chives, fresh leaves; Chinese chives, fresh leaves; daylily bulbs; Elegans hosta, Fritillaria leaves and bulbs; bulb garlic; great headed bulb garlic; serpent bulb garlic; kurrat; lady's leek; leek; wild leek; lily bulb; Beltsville bunching onion; bulb onion; Chinese bulb onion; fresh onion; green onion; macrostem onion; pearl onion; potato bulb onion; treetops onion; Welsh onion tops; shallot bulb and fresh leaves; and cultivars, varieties, and/or hybrids of these	7	7	4
Calamondin, Citrus hybrids (chironja, tangelo, tangor), Grapefruit, Kumquat, Lemon, Lime, Mandarin (tangerine), Orange (sour, sweet), Pummelo, Satsuma mandarin	7	7	5
Pome Fruits: Apple, Crabapple, Loquat, Mayhaw, Pear, Quince	7	12	4
Grapes and Other Climbing Vine Small Fruits (except fuzzy kiwifruit): Amur river grape; gooseberry, hardy kiwifruit, Maypop, schisandra berry, and cultivars, varieties, and/or hybrids of these	7	14	2
Stone Fruit: Apricot, Cherry (Sweet and Tart), Nectarine, Peach, Plum (Chickasaw, Damson, Japanese), Plumcot, Prune (Fresh)	7	10	4

	Days to Wait to Harvest	Days to Wait Before Reapplication	Maximum Number of Applications per Season
Cucurbits: Chayote (fruit), Chinese waxgourd (Chinese preserving melon), Citron melon, Cucumber, Gherkin, Gourd (edible), <i>Mormodica</i> spp., Muskmelon (hybrid and/or cultivars of <i>Cucumis melo</i> including true cantaloupe, cantaloupe, casaba, crenshaw melon, golden pershaw melon, honeydew melon, honey balls, mango melon, Persian melon, pineapple melon, Santa Claus melon, and snake melon), Pumpkin, Squash (summer and winter), Watermelon	0	5	5
Tree Nuts: Almond, Beech nut, Brazil nut, Butternut, Cashew, Chestnut, Chinquapin, Filbert (hazelnut), Hickory nut, Macadamia (bush nut), Pecan, Pistachio, Walnut (black and English [Persian])	14	14	4
Edible Poddled Legume Vegetables and Succulent Shelled Peas and Beans: Bean (<i>Phaseolus</i> spp.) (includes runner bean, snap bean, wax bean, lima bean [green]); Bean (<i>Vigna</i> spp.) (includes asparagus bean, Chinese longbean, moth bean, yardlong bean, blackeyed pea, cowpea, southern pea); Jackbean; Broad Bean (succulent); Pea (<i>Pisum</i> spp.) (includes dwarf pea, edible-pod pea, snow pea, sugar snap pea, English pea, garden pea, green pea); Soybean (immature seed); Sword Bean; and Pigeon Pea	7	7	3
Strawberries and Other Low Growing Berries: Bearberry; Bilberry; Lowbush Blueberry; Cloudberry; Cranberry; Lingonberry; Muntries; Partridgeberry; and cultivars, varieties, and/or hybrids of these	1	7	2
Blueberries and Other Bush and Cane Berries: Aronia berry; blueberry, highbush and lowbush; buffalo currant; Chilean guava; currant, red and black; elderberry; European barberry; gooseberry; cranberry; highbush; edible honeysuckle; huckleberry; jostaberry; Juneberry; lingonberry; natie currant; saki; sea buckthorn; and cultivars, varieties, and/or hybrids of these; and, Blackberry, Loganberry, Raspberry (black and red), wild raspberry, and cultivars, varieties, and/or hybrids of these	1	7	5

HOUSEPLANTS

TO KILL THESE INSECTS	Aphids (including Green Peach, Rose, Woolly Melon, Black Melon, and Cotton), Army Worms (including Fall Army Worm and Southern Army Worm), Caterpillars (including Red Humped Caterpillar, Tomato Fruitworm and Cabbage Looper), Flea Hopper, Fruit Fly (including Cherry, Black Cherry and Western Cherry), Leafhoppers (including Glassy Wing Sharpshooter and Potato Leaf Hopper), Leaf Miners (including Chrysanthemum, Citrus and Tentiform), Mealybugs (including Citrus, Grape, Obscure Grape, Obscure Longtail, Pink Hibiscus and Maderia), Moths (including Codling, Diamondback Moth, Gypsy Moths and Oriental Fruit Moth), Plantbugs (including Tarnished and Mullein Plant Bug), Psyllids, Swede Midge, Thrips (including Onion, Citrus, Cotton, Palm and Western Flower), Weevils (including Pecan Weevil, Pepper Weevil and Strawberry Weevil), Whiteflies (including Greenhouse, Sweet Potato, Silverleaf, Banded and Giant)
ON THESE PLANTS	Houseplants
USE THIS AMOUNT	1.5 fl. oz. per gallon of water
WHEN TO APPLY	Apply as soon as insect problems are noticed. Wait 1 to 4 weeks to re-apply if insect problems reappear. Do not apply more than 5 times in a season.
HOW TO APPLY	Tank Sprayer Shake container gently before using. Mix 1.5 fl. oz. of product per gallon of water. • Hold sprayer 8 to 12 inches from the area to be treated. • Direct spray toward the upper and lower leaf surfaces and stems where the pests appear. Spray only until the surface of the foliage is wet.

STORAGE AND DISPOSAL

PESTICIDE STORAGE	Keep from freezing. Keep pesticide in original container. Do not put into food or drink containers. Avoid contamination of feed and foodstuffs. Store in a cool, dry place; preferably in a locked storage area.
PESTICIDE DISPOSAL	Nonrefillable container. Do not reuse or refill this container. If empty: Place in trash or offer for recycling if available. If partly filled: Call your local solid waste agency for disposal instructions. Never place unused product down any indoor or outdoor drain.

PRECAUTIONARY STATEMENTS

CAUTION

HAZARDS TO HUMANS & DOMESTIC ANIMALS

Harmful if swallowed, inhaled or absorbed through the skin. Avoid contact with skin, eyes, or clothing. Avoid breathing vapors or spray mist. Wash thoroughly with soap and water after handling and before eating, drinking, chewing gum, using tobacco or using the toilet. Remove and wash contaminated clothing before reuse. Prolonged or frequently repeated skin contact may cause allergic reactions in some individuals.

FIRST AID

IF ON SKIN	<ul style="list-style-type: none">• Take off contaminated clothing.• Rinse skin immediately with plenty of water for 15-20 minutes.• Call a poison control center or doctor for treatment advice.
IF INHALED	<ul style="list-style-type: none">• Move the person to fresh air.• If person is not breathing, call 911 or an ambulance, then give artificial respiration, preferably mouth-to-mouth if possible.• Call a poison control center or doctor for further treatment advice.
IF SWALLOWED	<ul style="list-style-type: none">• Call a poison control center or doctor immediately for treatment advice.• Have person sip a glass of water if able to swallow.• Do not induce vomiting unless told to do so by a poison control center or doctor.• Do not give anything by mouth to an unconscious person.

For MEDICAL emergencies, Call 24 Hours a Day **1-800-225-2883**

Have the product container or label with you when calling a poison control center or doctor or going for treatment. You may also contact 1-800-225-2883 for emergency medical treatment information.

NOTE TO PHYSICIAN: There is no specific antidote. All treatments should be based on observed signs and symptoms of distress in the patient. Overexposure to other materials other than this product may have occurred.

ENVIRONMENTAL HAZARDS

To protect the environment, do not allow pesticide to enter or run off into storm drains, drainage ditches, gutters or surface waters. Applying this product in calm weather when rain is not predicted for the next 24 hours will help to ensure that wind or rain does not blow or wash pesticide off the treatment area. Rinsing application equipment over the treated area will help avoid run off to water bodies or drainage systems. This pesticide is toxic to wildlife. This product is toxic to bees exposed to direct treatment. Do not apply this product while bees are actively visiting the treated area.

PHYSICAL OR CHEMICAL HAZARDS: Do not apply this product in or on electrical equipment due to the possibility of shock hazard.

NOTICE: To the extent allowed by law, buyer assumes all risks of use, storage or handling of this product not in accordance with directions.

THE ORTHO® GUARANTEE: If for any reason you, the consumer, are not satisfied with this product, mail us proof of purchase to obtain a full refund of your purchase price.

**Ortho® Insecticida para Flores, Frutas y Vegetales
Concentrado**





MODO DE EMPLEO

Se considera una violación a la ley federal usar este producto con otros fines que los indicados en la etiqueta.

INFORMACION DE APLICACION IMPORTANTE

- Únicamente para uso residencial en interiores y exteriores.
- No para producción comercial.
- No aplique este producto de manera que entre en contacto directo o por deriva con personas o mascotas.
- Mantenga a los niños y mascotas lejos del área tratada hasta que el rociado se haya secado por completo.
- Cuando se aplica en exteriores:
 - No aplique si la velocidad del viento es mayor que 16 km/h.
 - Siempre colóquese de espaldas al viento cuando aplique este producto.

COMO APLICAR	Atomizador tipo tanque Agite el envase suavemente antes de usar. <ul style="list-style-type: none">• Mezcle 44 ml del producto por cada 3.8 litros de agua.• Mantenga el rociador a una distancia de 20 a 25 cm del área que desea tratar.• Dirija el rociado hacia las superficies inferiores y superiores de las hojas y tallos donde aparecen los insectos. Rocíe únicamente hasta que esté mojada la superficie del follaje.
	Aplicador Ortho® Dial 'N Spray® Agite el envase suavemente antes de usar. <ul style="list-style-type: none">• Coloque el disco selector en 1.5 oz (44 ml).• Vierta el producto en el recipiente hasta llenarlo o hasta la mitad.• NO agregue agua.• Conecte la manguera al rociador.• Mantenga el rociador a una distancia de 20 a 25 cm del área que desea tratar.• Dirija el rociado hacia las superficies inferiores y superiores de las hojas y tallos donde aparecen los insectos.• Rocíe únicamente hasta que esté mojada la superficie del follaje. El producto no utilizado debe verterse nuevamente en el contenedor original. No use el aplicador Ortho® Dial 'N Spray® en interiores

COMO APLICAR	Ortho® Dial 'N Spray® con conexión directa 
PREPARAR EL APLICADOR	• Coloque el disco selector en 44 ml.
CONECTAR 	<ul style="list-style-type: none"> • Destape el envase de concentrado. Conserve la tapa para almacenar el producto. • Inserte el tubo de succión en la abertura del envase y gire el aplicador Ortho® Dial 'N Spray® sobre el envase para conectarlo. • Conecte la manguera al rociador y abra el paso de agua.
ROCIAR 	<ul style="list-style-type: none"> • Mantenga el rociador a una distancia de 20 a 25 cm del área que desea tratar. • Dirija el rociado hacia las superficies inferiores y superiores de las hojas y tallos donde aparecen los insectos. • Rocíe únicamente hasta que esté mojada la superficie del follaje.
FINALIZAR 	<ul style="list-style-type: none"> • Luego de usar, desenrosque el aplicador Ortho® Dial 'N Spray® para retirarlo del envase de concentrado Ortho® Insecticida para Flores, Frutas y Vegetales. • Vuelva a tapar el envase de concentrado Ortho® Insecticida para Flores, Frutas y Vegetales.
Importante: Para evitar que el rociador se obstruya, límpielo después de cada uso según las instrucciones.	

JARDINES

PARA ELIMINAR ESTOS INSECTOS

Áfidos (incluidos el verde del durazno, el lanoso, el del melón y el algodonoso), gusanos del ejército (incluidos del ejército del otoño y del ejército del sur), insectos de la vid con bandas, escarabajos (incluidos el escarabajo de la hoja del frijol, el escarabajo de la patata de Colorado, el escarabajo pulga, el escarabajo japonés, el escarabajo mexicano del frijol y el escarabajo oriental), escarabajos del pepino (incluidos el manchado, el rayado y el rayado del oeste), larvas de polilla, barrenadores (incluidos del cornejo, del maíz europeo, del peral y de la calabaza), cogolleros (incluido el cogollero del tabaco), orugas (incluidas la oruga roja jorobada, el gusano del tomate y el gusano falso medidor), gusarapos de la rosa, curculión de la ciruela, gusarapo europeo, tentredinidos del pino europeo, gusanos de la avellana, pulga saltarina, mosca de la fruta (incluidas del cerezo, del cerezo negro y del cerezo del oeste), esqueletizador de la hoja de la uva del oeste, barrenadores del ruzno, gusanos de cuerno, cigarra, filoxeras (sólo la forma aérea), cicadélidos (incluidos homalodisca coagulata y cicadélido de la papa), barrenadores de hojas tentiformes (incluidas los de crisantemos, de cítricos y tentiformes), gusanos del manzano pequeño, gusanos de la manzana, cochinitas harinosas (incluidas las de cítricos, de uvas, las oscuras, las de cola larga, las rosadas y las de Madeira), gusano del melón, polillas (incluidas la carpocapsa, la polilla dorso de diamante, la polilla gitana y la polilla de la fruta oriental), gusanos naranja de ombligo, gusanos barrenador de la nuez, gusanos barrenador del fruto, gorgojos de huerta (incluidas chinches lygus y gordobolo), psílidos, mosca de sierra de

JARDINES

PARA ELIMINAR ESTOS INSECTOS	la manzana europea, cochinillas (incluidas la cochinilla asiática de Cycad, cochinilla negra caribeña, cochinilla roja de California, cochinilla citricola, cochinilla algodonosa del arce, cochinilla del evónimo, cochinilla Fletcher, cochinilla de la cera de Florida, cochinilla de caparazón verde, cochinilla de la cera de la India, cochinillas concha de ostra, cochinillas de agujas de pino, cochinillas rojas, cochinilla de San José y cochinilla Tea), chinches de la calabaza, pentatomidos, mosquito de la col, trips (incluidos de cítricos, del algodón, de la palmera y de la flor del oeste), gorgojos (incluidos gorgojo de la nuez pacana, gorgojo del pimiento y gorgojo de la fresa), moscas blancas (incluidas de invernadero, de la patata dulce, de hoja plateada, con bandas y la gigante)
EN ESTAS PLANTAS	Rosas, flores, árboles, arbustos y plantas ornamentales
USE ESTA CANTIDAD	44 ml por cada 3.8 litros La posición de Ortho® Dial N Spray® es 1.5 oz (44 ml).
CUANDO APLICAR	Aplice tan pronto como detecte los problemas de insectos. Espere entre 1 y 4 semanas para aplicar nuevamente si aparecen problemas de insectos. No haga más de 5 aplicaciones por temporada.

COMESTIBLES

PARA ELIMINAR ESTOS INSECTOS	Afidos (incluidos el verde del durazno, el lanoso, el del melón y el algodonoso), gusanos del ejército (incluidos del ejército del otoño y del ejército del sur), silidos asiáticos de cítricos, insectos de la vid con bandas, escarabajos (incluidos el escarabajo de la hoja del frijol, el escarabajo de la patata de Colorado, el escarabajo pulga, el escarabajo japonés, el escarabajo mexicano del frijol, el escarabajo de la savia y el escarabajo oriental), gusanos de las grosellas, moscas de las agallas de las grosellas, escarabajos del pepino (incluidos el manchado, el rayado y el rayado del oeste), cogolleros (incluido el cogollero del tabaco), orugas (incluidas la oruga roja jorobada, gusano del tomate, gusano del cerezo, gusano del arándano, gusano de la punta del arándano (Diptera: Cecidomyiidae) gusano Sapaganothis, gusano de la frambuesa occidental (adulto) y el gusano falso medidor), gusarapos de la rosa, curculios de la ciruela, gusanos de la avellana, pulga saltarina, mosca de la fruta (incluidas del cerezo, del cerezo negro y del cerezo del oeste), barrenadores del rueño, esqueletizador de la hoja de la uva del oeste, gusanos de cuerno, cigarra, fibloxera (sólo la forma aérea), Ampelogypter ampelopsis, cicadélidos (incluidos homalodisca coagulata, de la uva, variegado y cicadélido de la papa), barrenadores de hojas (incluidas los de crisantemos, de cítricos y tentiformes), gusanos del manzano pequeño, gusanos de la manzana, cochinillas harinosas (incluidas las de cítricos, de uvas, las oscuras, las de cola larga, las rosadas y las de Madeira), gusano del melón, polillas (incluidas la carpocapsa, la polilla dorso de diamante, la polilla gitana y la polilla de la fruta oriental), gusanos naranja umbilicada, barrenador del melocotón, gusanos barrenador de la nuez, gusanos barrenador del fruto, gorgojos de huerta (incluidas chinches lygus y gordobobo), psíidos, mosca de sierra de la manzana europea, cochinillas (incluidas la cochinilla asiática de Cycad,
-------------------------------------	--

COMESTIBLES

PARA ELIMINAR ESTOS INSECTOS

cochinilla negra caribeña, cochinilla roja de California, cochinilla citrícola, cochinilla algodonosa del arce, cochinilla del evónimo, cochinilla Fletcher, cochinilla de la cera de Florida, cochinilla de caparazón verde, cochinilla de la cera de la India, cochinillas concha de ostra, cochinillas de agujas de pino, cochinillas rojas, cochinilla de San José y cochinilla Tea), gusano falso medidor, gusanos escupidores, chinches de la calabaza, barrenadores de la calabaza, gusanos de la raíz de las fresas, pentatómidos, mosquito de la col, trips (incluidos de cítricos, del algodón, de la palmera y de la flor del oeste), moscas de la nuez, gorgojos (incluidos gorgojo de la nuez pacana, gorgojo del pimiento y gorgojo de la fresa), moscas blancas (incluidas de invernadero, de la patata dulce, de hoja plateada, con bandas y la gigante)

EN ESTAS PLANTAS

Vegetales: Amaranto, rúcula silvestre, brócoli, col de Bruselas, repollo, cardo, coliflor, apio, celtuce, perifollo, crisantemos (de hoja comestible, guiraldada), col verde, maíz salado, draba (jardín, meseta), diente de león, romaza, berenjena, endivia, hinojo de Florencia, uchuva, coles rizadas, colirrábano, lechuga (cabeza, hoja), mizuna, hojas verdes de mostaza, mostaza espinaca, plantas de sal, perejil, pepino, pimiento (morcón, chile, pimiento de cocina, pimiento dulce), verdolaga (jardín, invierno), radicheta, rape greens (especie de col), ruibarbo, espinaca (hoja, de la vid, de Nueva Zelanda), acelga, tomatillo, tomate

Frutas cítricas: Calamondín, híbridos de cítricos (chironja, tangelo, tangor), toronja, quinito, limón, lima, mandarina (tangerina), naranja (agria, dulce), pomelo, mandarina Satsuma

Frutas de pepitas: Manzana, manzano silvestre, nispero, fruto del espino de mayo, pera, membrillo

Uvas y otras frutas pequeñas trepadoras de parrá (exceptuando la fruta kiwi velludo): Grosella espinosa, fruta Kiwi Hardy, Uva Amur River, Pasionaria lila (Passiflora incarnata), bayas Schisandra (Schisandra chinensis)

Vegetales tuberosos y de corno: Papa, camote, arracacha (Arracacia xanthorrhiza), sagú (Maranta arundinacea), alcachofa (china y de Jerusalén), achira (Canna edulis Ker-Gawler), yuca (Manihot esculenta) (amarga y dulce), chayote (Sechium edule) (raíz), chufa (Cyperus esculentus), Sasheen, gengibre, Ierén o topinambur (Calathea allouia), tanier (Caladium sagittaeifolium), cúrcuma (Curcuma longa), jícama (Pachyrhizus erosus), batata (Dioscorea batatas)

Frutas con hueso: Albaricoques, cereza (dulce y agria), nectarinas, durazno, ciruela (Chickasaw, Damson, japonés), plumcot, ciruelas pasa (frescas)

Cucurbitáceas: Chayote (fruta), calabaza china (melón chino para conserva), melón de agua (Citrullus lanatus), pepino, pepinillo, calabacín (comestible), Mormordica spp., melón (híbrido y/o cultivares de Cucumis melo incluyendo melón Cucumis melo cantaloupensis, melón cantaloupensis, melón casaba, melón crenshaw, melón pershaw dorado, melón honeydew, melón honey balls, melón melon, melón Pérsico, melón piña, melón Santa Claus, y melón culebra), calabaza, ayote (verano e invierno), sandía

Nueces de árboles: Almendras, nuez de haya, nuez de Brasil, nuez de nogal, marañón, castaña, nuez de chinquapin, aveñana, nuez de nogal americano, macadamia, pecana, pistacho, nuez (negra e inglesa) (persa)

COMESTIBLES

EN ESTAS PLANTAS	<p>Legumbres comestibles en vaina y arvejas suculentas y frijoles en vaina: Frijol (<i>Phaseolus</i> spp.) (incluye frijol ayocote [<i>Phaseolus coccineus</i>], ejotes [<i>Phaseolus vulgaris</i>], frijol <i>P. lunatus</i> var. <i>macrocarpus</i>, o <i>P. limensis</i>, frijol <i>Phaseolus lunatus</i> [verde]); Frijol (<i>Vigna</i> spp.) (incluye el frijol espárrago, Ejote chino largo, guisantes polilla [<i>Vigna aconitifolia</i>], ejote de una yarda, frijol <i>Vigna unguiculata</i>, frijol salvaje [<i>Vigna unguiculata</i>], guisante del sur; frijol <i>Canavalia ensiformis</i>; haba [<i>Vicia faba</i>] (suculento); arveja (<i>Pisum</i> spp.) (incluye arveja enana, arveja de vaina comestible, Arveja china o arveja de nieve [<i>Pisum sativum</i>], arveja "sugar snap", arveja inglesa, arveja de jardín y arveja verde); soya [semilla inmadura]; haba espada [<i>Canavalia gladiata</i>] y guandul [<i>Cajanus cajan</i>]</p> <p>Fresas y otras bayas de baja estatura: Gayuba (<i>Arctostaphylos uva-ursi</i>); arándano de arbusto bajo; mora de los pantanos (<i>Rubus chamaemorus</i> L.); arándano rojo; arándano de arbusto bajo o montañés (<i>Vaccinium vitis-idaea</i>); manzanas emues (<i>Kunzea pomifera</i> F. Muell.); gaulteria, y cultivares, variedades y/o híbridos de éstas</p> <p>Arándanos y otras bayas de arbusto y matorrales de tallo leñoso: Baya de la Anoria (<i>Aronia melanocarpa</i>); arándano, de arbusto alto y bajo; grosellas; guayaba chilena; grosella, roja y negra; baya del saúco (<i>Sambucus nigra</i>); baya de agracejo (<i>Berberis vulgaris</i>); grosella espinosa; arándano, arbusto alto; madreelva comestible; zarzamora (<i>Gaylussacia baccata</i>); uvasella (<i>Ribes nidigrolaria</i>); baya de junio (<i>Amelanchier alnifolia</i>); arándano de arbusto bajo o montañés (<i>Vaccinium vitis-idaea</i>); grosella natie; baya del espiño amarillo (<i>Hippophae rhamnoides</i>); y cultivares, variedades, y/o híbridos de éstos; y mora, frambuesa americana, frambuesa (negra y roja), frambuesa silvestre y cultivares, variedades y/o híbridos de éstas</p> <p>Cebollas y otros vegetales con bulbos: Cebollines, hojas frescas; cebollines chinos, hojas frescas; bulbos del lirio daylily (género <i>Heemerocallidaceae</i>), elegans hosta (<i>Hosta sieboldiana</i>), hojas y bulbos de corona imperial (<i>Fritillaria meleagris</i>); ajo de bulbo grande, ajo de bulbo de serpiente; kurrat (<i>Allium ampeloprasum</i> var. <i>kurrat</i>); puerro (<i>Allium cernuum</i>); puerro; puerro silvestre, bulbo de lirio; cebolla Beltsville (<i>Allium x proliferum</i> [Moench] Schrad.), cebolla de bulbo, cebolla de bulbo chino; cebolla fresca, cebolla verde, cebolla de macrotallo, cebolla perla, cebolla bulbo de papa (<i>Allium cepa</i> L. var. <i>aggregatum</i> G. Don.); cebolla treetops (<i>Allium x proliferum</i> [Moench] Schrad. ex Willd.); cebolla Welsh tops (<i>Allium fistulosum</i> L.); bulbo de cebolla escalonia (<i>Allium cepa</i> var. <i>aggregatum</i> G. Don.) y hojas frescas y cultivares, variedades y/o híbridos de éstas</p>
USE ESTA CANTIDAD	44 ml por cada 3.8 litros La posición de Ortho® Dial 'N Spray® es 1.5 oz (44 ml).
CUANDO APLICAR	Aplique tan pronto como detecte los problemas de insectos.

Días de Espera Hasta la Cosecha	Días que Debe Esperar Antes de Otra Aplicación	Número Máximo de Aplicaciones por Temporada	
Amaranto, rúcula silvestre, brócoli, col de Bruselas, repollo, cardo, coliflor, apio, celtuce (Lactuca sativa var. angustana), crisantemos (de hoja comestible, guimarda), col verde, maíz salado, draba (jardín, meseta), diente de león, romaza, berenjena, endivia, hinojo de Florencia, uchuva, coles rizadas, colirrábano, lechuga (cabeza, hoja), mizuna, hojas verdes de mostaza, mostaza espinaca, plantas de sal, perejil, pepino, pimiento (morrón, chile, pimiento de cocina, pimiento, dulce), verdolaga (jardín, invierno), achicoria, nabicol (Brassica napus), ruibarbo, espinaca (hoja, de la vid, de Nueva Zelanda), acelga, tomatillo, tomate, papa, camote, arracacha (Arracacia xanthorrhiza), arracacha (Arracacia xanthorrhiza), sagú (Maranta arundinacea), alcachofa (china y de Jerusalén), achira (Canna edulis Ker-Gavler), yuca (Manihot esculenta) (amarga y dulce), chayote (Secchium edule) (raíz), chufa (Cyperus esculentus), Sasheen, jengibre, lerén o topinambur (Caltha alba), taniel (Calthium sagittaeifolium), cúrcuma (Curcuma longa), jicama (Pachyrhizus erosus), batata (Dioscorea batatas), cebollines, hojas frescas, cebollines chinos, hojas frescas, bulbos del lirio d'auilly (género Hemerocallidaceae), cebolla Beltsville (Allium x proliferum [Moench] Schrad.), cebolla de bulbo, cebolla de bulbo chino, cebolla fresca, cebolla verde, cebolla de macrotallo, cebolla perla, cebolla bulbo de papa (Allium cepa L. var. aggregatum G. Don.); cebolla treetops (Allium x proliferum [Moench] Schrad. ex Willd.); cebolla Welsh tops (Allium fistulosum L.); bulbo de cebolla escalonia (Allium cepa var. aggregatum G. Don.) y hojas frescas y cultivares, variedades y/o híbridos de éstas	7	7	4

	Días de Espera Hasta la Cosecha	Días que Debe Esperar Antes de Otra Aplicación	Número Máximo de Aplicaciones por Temporada
Calamondín, híbridos de cítricos (chironja, tangelo, tangor), toronja, quinito, limón, lima, mandarina (tangerina), naranja (agria, dulce), pomelo, mandarina Satsuma	7	7	5
Frutos de pepitas: Manzana, manzano silvestre, nispero, fruto del espino de mayo, pera, membrillo	7	12	4
Uvas otras frutas pequeñas trepadoras de parra (exceptuando la fruta kiwi velludo): Uva Amur River; grosella espinosa, fruta Kiwi Hardy, Pasionaria lila (Passiflora incarnata), Bayas Schisandra (Schisandra chinensis) y cultivares, variedades y/o híbridos de éstas	7	14	2
Frutas con hueso: Albaricoques, cereza (dulce y agria), nectarinas, durazno, ciruela (Chickasaw, Damson, japonés), plumcot, ciruelas pasa (frescos)	7	10	4
Cucurbitáceas: Chayote (fruta), calabaza china (melón chino para conserva), melón de agua (Citrullus lanatus), pepino, pepinillo, calabacín (comestible), Mormardica spp., melón (híbrido y/o cultivares de Cucumis melo incluyendo melón Cucumis melo cantaloupenis, melón cantaloupenis, melón casaba, melón crenshaw, melón pershaw dorado, melón honeydew, melón honey balls, melón melon, melón Pérsico, melón piña, melón Santa Claus, y melón culebra), calabaza, ayote (verano e invierno), sandía	0	5	5
Nueces de árboles: Almendras, nuez de haya, nuez de Brasil, nuez de nogal, marañón, castaña, nuez de chinquapín, avellana, nuez de nogal americano, macadamia, pecana, pistacho, nuez (negra e inglesa) (persa)	14	14	4

	Días de Espera Hasta la Cosecha	Días que Debe Esperar Antes de Otra Aplicación	Número Máximo de Aplicaciones por Temporada
Legumbres comestibles en vaina y arvejas succulentas y frijoles en vaina: Frijol (<i>Phaseolus</i> spp.) (incluye frijol ayocote [<i>Phaseolus coccineus</i>], ejotes [<i>Phaseolus vulgaris</i>], frijol <i>P. lunatus</i> var. <i>macrocarpus</i> , o <i>P. limensis</i> , frijol <i>Phaseolus lunatus</i> (verde)); Frijol (<i>Vigna</i> spp.) (incluye el frijol espárrago, Ejote chino largo, guisantes pollos [<i>Vigna acotifolia</i>], ejote de una yarda, frijol <i>Vigna unguiculata</i> , frijol salvaje [<i>Vigna unguiculata</i>], guisante del sur; frijol <i>Canavalia ensiformis</i> ; haba (<i>Vicia faba</i>) (succulento); arveja (<i>Pisum</i> spp.) (incluye arveja enana, arveja de vaina comestible, Arveja china o arveja de nieve [<i>Pisum sativum</i>], arveja "sugar snap", arveja inglesa, arveja de jardín y arveja verde); soya (semilla inmadura); haba espada (<i>Canavalia gladiata</i>) y guandul (<i>Cajanus cajan</i>)	7	7	3
Fresas y otras bayas de baja estatura: Gayúba (<i>Arctostaphylos uva-ursi</i>); arándano de arbusto bajo; mora de los pantanos (<i>Rubus chamaemorus</i> L.); arándano rojo; arándano de arbusto bajo o montañés (<i>Vaccinium vitis-idaea</i>); manzanas emúes (<i>Kunzea pomifera</i> F. Muell.); gaultheria, y cultivares, variedades y/o híbridos de éstas	1	7	2
Arándanos y otras bayas de arbusto y matorral de tallo leñoso: Baya de la Anoría (<i>Aronia melanocarpa</i>); arándano, de arbusto alto y bajo; grosellas; guayaba chilena; grosella, roja y negra; baya del saúco (<i>Sambucus nigra</i>); baya de agracejo (<i>Berberis vulgaris</i>); grosella espinosa; arándano, arbusto alto; madre selva comestible; zarzamora (<i>Gaylussacia baccata</i>); uvaseña (<i>Ribes nidigrolaria</i>); baya de junio (<i>Amelanchier alnifolia</i>); arándano de arbusto bajo o montañés (<i>Vaccinium vitis-idaea</i>); grosella natie; baya del espino amarillo (<i>Hippophae rhamnoides</i>); y cultivares, variedades, y/o híbridos de éstos; y mora, frambuesa americana, frambuesa (negra y roja), frambuesa silvestre y cultivares, variedades y/o híbridos de éstas	1	7	5

PLANTAS PARA INTERIORES

PARA ELIMINAR ESTOS INSECTOS	Afidos (incluidos el verde del durazno, el lanoso, el del melón y el algodonoso), gusanos del ejército (incluidos del ejército del otoño y del ejército del sur), orugas (incluidas la oruga roja jorobada, gusano del tomate y gusano falso medidor), chinche de jardín (<i>Halticus bractatus</i>), mosca de la fruta (incluidas del cerezo, del cerezo negro y del cerezo del oeste), cicadélidos (incluidos homalodisca coagulata y cicadélido de la papa), barrenadores de hojas tentiformes (incluidas las de crisantemos, de cítricos y tentiformes), cochinitas harinosas (incluidas las de cítricos, de uvas, las oscuras, las de cola larga, las rosadas y las de Madeira), polillas (incluidas la carpocapsa, la polilla dorso de diamante, la polilla gitana y la polilla de la fruta oriental), gorgojos de huerta (incluidas chinches lygus y gordobolo), psílidos, trips (incluidos de cebolla, cítricos, del algodón, de la palmera y de la flor del oeste), gorgojos (incluidos gorgojo de la nuez pacana, gorgojo del pimiento y gorgojo de la fresa), moscas blancas (incluidas de invernadero, de la patata dulce, de hoja plateada, con bandas y la gigante)
EN ESTAS PLANTAS	Plantas para interiores
USE ESTA CANTIDAD	44 ml por cada 3.8 litros de agua
CUANDO APLICAR	Aplique tan pronto como detecte los problemas de insectos. Espere entre 1 y 4 semanas para aplicar nuevamente si aparecen problemas de insectos. No haga más de 5 aplicaciones por temporada.
COMO APLICAR	Atomizador tipo tanque Agite el envase suavemente antes de usar. Mezcle 44 ml del producto por cada 3.8 litros de agua. • Mantenga el rociador a una distancia de 20 a 25 cm del área que desea tratar. • Dirija el rociado hacia las superficies inferiores y superiores de las hojas y tallos donde aparecen los insectos. Rocíe únicamente hasta que esté mojada la superficie del follaje.

ALMACENAMIENTO Y ELIMINACION

ALMACENAMIENTO DEL PESTICIDA	Evite que el producto se congele. Mantenga el pesticida en su envase original. No lo coloque en envases de comidas o bebidas. Evite la contaminación de comestibles y alimentos para animales. Almacene el producto en un lugar fresco y seco, preferentemente en un área de almacenamiento bajo llave.
ELIMINACION DEL PESTICIDA	Envase no rellenable. No vuelva a utilizar o llenar este envase. Si está vacío: Colóquelo en la basura o recíclalo, si corresponde. Si está parcialmente lleno: Llame a su agencia de desechos sólidos local para obtener instrucciones sobre cómo eliminar el producto. Nunca elimine el producto no utilizado en drenajes internos o externos.

AVISOS DE PRECAUCION

PRECAUCION

RIESGOS PARA SERES HUMANOS Y ANIMALES DOMESTICOS

Nocivo si se traga, inhala o entra en contacto con la piel. Evite el contacto con los ojos, la piel o la ropa. Evite inhalar las emanaciones o vapores del rociado. Lávese bien con jabón y agua después de manipular el producto y antes de comer, beber, masticar goma de mascar, usar tabaco o usar el baño. Debe quitarse y lavar la ropa contaminada antes de volver a usarla. Si el producto está en contacto con la piel durante tiempo prolongado o con frecuencia puede causar reacciones alérgicas en algunas personas.

PRIMEROS AUXILIOS

SI EL PRODUCTO ENTRA EN CONTACTO CON LA PIEL	<ul style="list-style-type: none">• Quite la ropa contaminada.• Lave inmediatamente la piel con abundante agua durante 15 a 20 minutos.• Llame a un centro de control de envenenamientos o a un médico para recibir instrucciones de tratamiento.
EN CASO DE INHALAR EL PRODUCTO	<ul style="list-style-type: none">• Traslade a la persona a un lugar con aire fresco.• Si no respira, llame al 911 o a una ambulancia, luego realice respiración artificial, de boca a boca, de ser posible.• Llame a un centro de control de envenenamientos o a un médico para obtener más recomendaciones sobre el tratamiento.
EN CASO DE INGERIR EL PRODUCTO	<ul style="list-style-type: none">• Consulte a un médico o a un centro de control de envenenamientos inmediatamente para obtener asesoramiento sobre el tratamiento.• Si la persona puede tragar, haga que beba poco a poco un vaso de agua.• No induzca el vómito a menos que así se lo indique un médico o un centro de control de envenenamientos.• No administre nada por boca a una persona que haya perdido el conocimiento.

Para emergencias MEDICAS, llame las 24 horas del día al **1-800-225-2883**.

Cuando llame a un centro de control de envenenamientos o a un médico, o intente obtener tratamiento, tenga a mano el envase o la etiqueta del producto. También puede llamar al 1-800-225-2883 para obtener información sobre tratamiento médico de emergencia.

NOTA PARA EL MEDICO: No existe un antídoto específico. Todos los tratamientos deben estar basados en los signos y síntomas de descompostura observados en el paciente. Puede haber ocurrido una sobreexposición a otros materiales además de los de este producto.

RIESGOS AMBIENTALES

Para proteger el medio ambiente, no permita que el pesticida ingrese o discurra a desagües de tormenta, zanjas de drenaje, canalones o aguas superficiales. La aplicación de este producto en un clima tranquilo, cuando no haya un pronóstico de lluvia para las próximas 24 horas, asegurará que el viento o la lluvia no soplen o laven el pesticida del área de tratamiento. Enjuagar el equipo de aplicación en la zona tratada evitará que el producto discurra a cuerpos de agua o sistemas de drenaje. Este pesticida es tóxico para animales y plantas silvestres. Este producto es tóxico para las abejas expuestas al tratamiento de manera directa. No aplique este producto mientras las abejas visitan activamente el área tratada.

RIESGOS FÍSICOS O QUÍMICOS: No aplique este producto sobre equipos eléctricos porque puede recibir una descarga eléctrica.

NOTA: En la medida que la ley lo permita, el comprador asume todos los riesgos de uso, almacenamiento o manejo de este producto si no se siguen las instrucciones correspondientes.

LA GARANTIA ORTHO®: Si por algún motivo, usted, el consumidor, no está satisfecho con este producto, envíenos el comprobante de compra por correo para recibir el reembolso total del precio de compra.

STORAGE AND DISPOSAL

PESTICIDE STORAGE Keep from freezing. Keep pesticide in original container. Do not put into food or drink containers. Avoid contamination of feed and foodstuffs. Store in a cool, dry place; preferably in a locked storage area.

PESTICIDE DISPOSAL Nonrefillable container. Do not reuse or refill this container. **If empty:** Place in trash or offer for recycling if available. **If partly filled:** Call your local solid waste agency for disposal instructions. Never place unused product down any indoor or outdoor drain.

PRECAUTIONARY STATEMENTS

CAUTION

HAZARDS TO HUMANS & DOMESTIC ANIMALS

Harmful if swallowed, inhaled or absorbed through the skin. Avoid contact with skin, eyes, or clothing. Avoid breathing vapors or spray mist. Wash thoroughly with soap and water after handling and before eating, drinking, chewing gum, using tobacco or using the toilet. Remove and wash contaminated clothing before reuse. Prolonged or frequently repeated skin contact may cause allergic reactions in some individuals.

FIRST AID

IF ON SKIN

- Take off contaminated clothing.
- Rinse skin immediately with plenty of water for 15-20 minutes.
- Call a poison control center or doctor for treatment advice.

IF INHALED

- Move the person to fresh air.
- If person is not breathing, call 911 or an ambulance, then give artificial respiration, preferably mouth-to-mouth if possible.
- Call a poison control center or doctor for further treatment advice.

IF SWALLOWED

- Call a poison control center or doctor immediately for treatment advice.
- Have person sip a glass of water if able to swallow.
- Do not induce vomiting unless told to do so by a poison control center or doctor.
- Do not give anything by mouth to an unconscious person.

For MEDICAL emergencies, Call 24 Hours a Day **1-800-225-2883**

Have the product container or label with you when calling a poison control center or doctor or going for treatment. You may also contact 1-800-225-2883 for emergency medical treatment information.

NOTE TO PHYSICIAN: There is no specific antidote. All treatments should be based on observed signs and symptoms of distress in the patient. Overexposure to other materials other than this product may have occurred.

ENVIRONMENTAL HAZARDS

To protect the environment, do not allow pesticide to enter or run off into storm drains, drainage ditches, gutters or surface waters. Applying this product in calm weather when rain is not predicted for the next 24 hours will help to ensure that wind or rain does not blow or wash pesticide off the treatment area. Rinsing application equipment over the treated area will help avoid run off to water bodies or drainage systems. This pesticide is toxic to wildlife. This product is toxic to bees exposed to direct treatment. Do not apply this product while bees are actively visiting the treated area.



Questions, Comments or Medical Information
Preguntas, comentarios o información médica
1-800-225-2883 www.ortho.com

©2013 The ORTHO Group.
World rights reserved.
Sold by **The ORTHO Group**
P.O. Box 190, Marysville, OH 43040

EPA Reg. No. 8033-107-239
EPA Est. No. 239-1A-3I, 58996-MO-1A,
085652-OH-1W, 239-MS-001M

Superscript is first letter of lot number. Product of Japan.

LB3965

PRESS TO RESEAL

PRESIONE PARA VOLVER A CERRAR



MERIT® 75 WP

Insecticide

For foliar and systemic insect control in turfgrass (including sod farms), landscape ornamentals, fruit and nut trees, and interior plantscapes.

BACKED
by **BAYER™**

STOP - Read the label before use.
Keep out of reach of children.

CAUTION

ACTIVE INGREDIENT:

Imidacloprid, 1-[(6-Chloro-3-pyridinyl) methyl]-*N*-nitro-2-imidazolidinimine75.0%

OTHER INGREDIENTS:25.0%

100.0%

EPA Reg. No. 432-1314 EPA Est. indicated by the 2nd and 3rd digits of the batch number on this package. (85) = 065387-AR-002 (98) =33967-NJ-1



3549171 060922A

FIRST AID

If swallowed	<ul style="list-style-type: none">• Call a poison control center or doctor immediately for treatment advice.• Have person sip a glass of water if able to swallow.• Do not induce vomiting unless told to do so by a poison control center or doctor.• Do not give anything by mouth to an unconscious person.
If on skin or clothing	<ul style="list-style-type: none">• Take off contaminated clothing.• Rinse skin immediately with plenty of water for 15 to 20 minutes.• Call a poison control center or doctor for treatment advice.
If in eyes	<ul style="list-style-type: none">• Hold eye open and rinse slowly and gently with water for 15 to 20 minutes. Remove contact lenses, if present, after the first 5 minutes, then continue rinsing eye.• Call a poison control center or doctor for treatment advice.

In case of emergency call toll free the Bayer Environmental Science Emergency Response Telephone No. 1-800-334-7577. Have a product container or label with you when calling a poison control center or doctor, or going for treatment.

Note To Physician: No specific antidote is available. Treat the patient symptomatically.

PRECAUTIONARY STATEMENTS

HAZARDS TO HUMANS AND DOMESTIC ANIMALS

CAUTION

Harmful if swallowed, inhaled, or absorbed through skin. Causes eye irritation. Avoid contact with skin, eyes, or clothing. Avoid breathing dust or vapor. Wash thoroughly with soap and water after handling. Remove contaminated clothing and wash before reuse. Keep children or pets off treated area until spray is dry.

Personal Protective Equipment (PPE):

WPS USES: Applicators and Other Handlers who handle this product for any use covered by the Worker Protection Standard (40 CFR part 170) – in general, agricultural plant uses e.g., use in sod farms, must wear:

- Long-sleeved shirt and long pants
- Chemical resistant gloves made of any waterproof material such as barrier laminate, butyl rubber, nitrile rubber, neoprene rubber, natural rubber, polyethylene, polyvinylchloride (PVC) or viton. If you want more options, follow the instructions for category A on an EPA chemical-resistance category selection chart.
- Shoes plus socks

Follow manufacturer's instructions for cleaning/ maintaining personal protective equipment, PPE. If no such instructions for washables, use detergent and hot water. Keep and wash PPE separately from other laundry.

Non-WPS USES: Applicators and other handlers who handle this product for any use NOT covered by the Worker Protection Standard (40 CFR part 170) – in general, only agricultural plant uses are covered by the WPS, must wear:

- Shirt and pants
- Gloves
- Shoes plus socks

Engineering controls statements:

- When handlers use closed systems, enclosed cabs, or aircraft in a manner that meets the requirements listed in the Worker Protection Standard (WPS) for agricultural pesticides [40 CFR 170.240(d)(4-6)], the handler PPE requirements may be reduced or modified as specified in the WPS.

USER SAFETY RECOMMENDATIONS

User should:

- Wash hands before eating, drinking, chewing gum, using tobacco or using the toilet.
- Remove clothing immediately if pesticide gets inside. Then wash thoroughly and put on clean clothing.
- Remove PPE immediately after handling this product. Wash the outside of gloves before removing. As soon as possible, wash thoroughly and change into clean clothing.

ENVIRONMENTAL HAZARDS

This product is highly toxic to aquatic invertebrates. Do not apply directly to water, or to areas where surface water is present or to intertidal areas below the mean high water mark. Do not contaminate water when disposing of equipment washwaters.

This product is highly toxic to bees exposed to direct treatment or residues on blooming crops or weeds. Do not apply this product or allow it to drift to blooming crops or weeds if bees are visiting the treatment area.

This chemical demonstrates the properties and characteristics associated with chemicals detected in groundwater. The use of this chemical in areas where soils are permeable, particularly where the water table is shallow, may result in groundwater contamination.

Do not formulate this product into other end-use products.

DIRECTIONS FOR USE

It is a violation of Federal law to use this product in a manner inconsistent with its labeling.

Do not apply this product in a way that will contact workers or other persons, either directly or through drift. Only protected handlers may be in the area during application. For any requirements specific to your State or Tribe, consult the agency responsible for pesticide regulation.

AGRICULTURAL USE REQUIREMENTS

Use this product only in accordance with its labeling and with the Worker Protection Standard, 40 CFR part 170. This Standard contains requirements for the protection of agricultural workers on farms, forests, nurseries, and greenhouses, and handlers of agricultural pesticides. It contains requirements for training, decontamination, notification, and emergency assistance. It also contains specific instructions and exceptions pertaining to the statements on this label about personal protective equipment (PPE) and restricted-entry interval. The requirements in this box only apply to uses of this product that are covered by the Worker Protection Standard.

Do not enter or allow worker entry into treated areas during the restricted-entry interval (REI) of 12 hours.

Exception: If the product is applied by drenching, the Worker Protection Standard, under certain circumstances, allows workers to enter the treated area if there will be no contact with anything that has been treated.

PPE required for early entry to treated areas that is permitted under the Worker Protection Standard and that involves contact with anything that has been treated, such as plants, soil, or water is:

- Coveralls
- Waterproof gloves
- Shoes plus socks

NON-AGRICULTURAL USE REQUIREMENTS

The requirements in this box apply to uses of this product that are NOT within the scope of the Worker Protection Standard for agricultural pesticides (40 CFR part 170). The WPS applies when this product is used to produce agricultural plants on farms, forests, nurseries, or greenhouses.

Keep children and pets off treated area until dry.

STORAGE AND DISPOSAL

Do not contaminate water, food, or feed by storage or disposal.

Pesticide Storage: Store in a cool, dry place and in such a manner as to prevent cross contamination with other pesticides, fertilizers, food, and feed. Store in original container and out of the reach of children, preferably in a locked storage area.

Handle and open container in a manner as to prevent spillage. If the container is leaking, invert to prevent leakage. If container is leaking or material spilled for any reason or cause, carefully dam up spilled material to prevent runoff. Refer to Precautionary Statements on label for hazards associated with the handling of this material. Do not walk through spilled material. Absorb spilled material with absorbing type compounds and dispose of as directed for pesticides below. In spill or leak incidents, keep unauthorized people away. You may contact the Bayer Environmental Science Emergency Response Team for decontamination procedures or any other assistance that may be necessary. The Bayer Environmental Science Emergency Response Telephone No. is 1-800-334-7577 or contact Chemtrec at 1-800-424-9300.

Pesticide Disposal: Wastes resulting from the use of this product may be disposed of on site or at an approved waste disposal facility.

Container Disposal: Triple rinse (or equivalent). Then offer for recycling or reconditioning, or puncture and dispose of in a sanitary landfill or by incineration, or, if allowed by State and local authorities, by burning. If burned, stay out of smoke.

APPLICATION TO TURFGRASS

MERIT® 75 WP Insecticide can be used for the control of soil inhabiting pests of turfgrass, such as Northern & Southern masked chafers, *Cyclocephala borealis*, *C. immaculata*, and/or *C. lurida*; Asiatic garden beetle, *Maladera castanea*; European chafer, *Rhizotroqus majalis*; Green June beetle, *Cotinis niti-*

da; May or June beetle, *Phyllophaga* spp.; Japanese beetle, *Popillia japonica*; Oriental beetle, *Anomala orientalis*; Billbugs, *Spherophorus* spp.; Annual bluegrass weevil, *Hyperodes* spp.; Black turfgrass atenioid, *Ataenius spretulus* and *Aphodius* spp; European Crane Fly *Tipula paludosa*; and Mole crickets, *Scapteriscus* spp. MERIT 75 WP Insecticide can also be used for the suppression of cutworms and chinchbugs in turfgrass areas. MERIT 75 WP Insecticide can be used as directed on turfgrass in sites such as home lawns, business and office complexes, shopping complexes, multi-family residential complexes, golf courses, airports, cemeteries, parks, playgrounds, athletic fields and sod farms.

The active ingredient in MERIT 75 WP Insecticide has sufficient residual activity so that applications can be made preceding the egg laying activity of the target pests. High levels of control can be achieved when applications are made preceding or during the egg laying period. The need for an application can be based on historical monitoring of the site, previous records or experiences, current season adult trapping or other methods. Optimum control will be achieved when applications are made prior to egg hatch of the target pests, followed by sufficient irrigation or rainfall to move the active ingredient through the thatch. Applications should not be made when turfgrass areas are waterlogged or the soil is saturated with water. Adequate distribution of the active ingredient cannot be achieved when these conditions exist. The treated turf area must be in such a condition that the rainfall or irrigation will penetrate vertically in the soil profile. Applications cannot exceed a total of 8.6 oz (0.4 lb of active ingredient) per acre per year.

Application Equipment for Use on Turfgrass

Apply MERIT 75 WP Insecticide in sufficient water to provide adequate distribution in the treated area. The use of accurately calibrated equipment normally used for the application of turfgrass insecticides is required. Use equipment which will produce a uniform, coarse droplet spray, using a low pressure setting to eliminate off target drift. Check calibration periodically to ensure that equipment is working properly.

APPLICATION TO ORNAMENTALS

MERIT 75 WP Insecticide is for use on ornamentals in commercial and residential landscapes and inte-

rior plantscapes. MERIT 75 WP Insecticide is a systemic product and will be translocated upward into the plant system from root uptake. To assure optimum effectiveness, the product must be placed where the growing portion of the target plant can absorb the active ingredient. The addition of a nitrogen containing fertilizer, where applicable, into the solution may enhance the uptake of the active ingredient. Application can be made by foliar application or soil applications; including soil injection, drenches, and broadcast sprays. Foliar applications offer locally systemic activity against insect pests.

When making soil applications to plants with woody stems, systemic activity will be delayed until the active ingredient is translocated throughout the plant. In some cases, this translocation delay could take 60 days or longer. For this reason, applications should be made prior to anticipated pest infestation to achieve optimum levels of control.

For outdoor ornamentals, **broadcast applications** cannot exceed a total of 8.6 oz (0.4 lb of active ingredient) per acre per year.

Ant Management Programs

Use MERIT 75 WP Insecticide to control aphids, scale insects, mealybugs and other sucking pests on ornamentals to limit the honeydew available as a food source for ant populations. MERIT 75 WP Insecticide applications can be then be supplemented with residual sprays, bait placements or other ant control tactics to further reduce the pest population.

NOTE: Not for use in commercial greenhouses, nurseries, or on grasses grown for seed, or on commercial fruit and nut trees.

Application Equipment for Foliar Applications

MERIT 75 WP Insecticide mixes readily with water and may be used in many types of application equipment. Mix product with the required amount of water and apply as desired dependent upon the selected use pattern.

When making foliar applications on hard to wet foliage such as holly, pine, or ivy, the addition of a

spreader/ sticker is recommended. If concentrate or mist type spray equipment is used, an equivalent amount of product should be used on the area sprayed, as would be used in a dilute application. MERIT 75 WP Insecticide has been found to be compatible with commonly used fungicides, miticides, liquid fertilizers, and other commonly used insecticides. Check physical compatibility using the correct proportion of products in a small jar test if local experience is unavailable. Do not apply through any irrigation system.

RECOMMENDED APPLICATIONS		
CROP	PEST	DOSAGE MERIT 75 WP
Turfgrass	Larvae of: Annual bluegrass weevil Asiatic garden beetle Billbug Black turfgrass ataenius Cutworms (suppression) European chafer	European Crane Fly Green June beetle Japanese beetle Northern masked chafer Oriental beetle <i>Phyllophaga</i> spp. Southern masked chafer
	6.4 to 8.6 oz. per acre or 3 to 4 level teaspoons per 1000 sq. ft.	
For optimum control of grubs, billbugs, annual bluegrass weevil, and European crane fly larvae, make application prior to egg hatch of the target pest. Be sure to read "APPLICATION EQUIPMENT" Section of this label. NOTE: 1 level teaspoon = 1.4 grams MERIT 75 WP 3 level teaspoons = 1 level Tablespoon		

RECOMMENDED APPLICATIONS (continued)		
CROP	PEST	DOSAGE MERIT 75 WP
	Chinchbug (suppression) Mole crickets	8.6 oz. per acre or 4 level teaspoons per 1,000 sq. ft.
	<p>For suppression of chinchbugs, make application prior to the hatching of the first instar nymphs. For control of mole crickets make application prior to or during the peak egg hatch period. When adults or large nymphs are present and actively tunneling, MERIT application should be accompanied by a curative insecticide. Follow label instructions for other insecticides when tank-mixing.</p>	
<p>Consult your local State Agricultural Experiment Station, or State Extension Turf Specialists for more specific information regarding timing of application. NOTE: For optimum control, irrigation or rainfall should occur within 24 hours after application to move the active ingredient through the thatch. Do not apply more than 8.6 oz (0.4 lb of active ingredient) per acre per year. Avoid mowing turf or lawn area until after sufficient irrigation or rainfall has occurred so that uniformity of application will not be affected.</p>		

RECOMMENDED APPLICATIONS

For use only in and around industrial and commercial buildings and residential areas

CROP	PEST		DOSAGE MERIT 75 WP	
Trees Shrubs Evergreens Flowers Foliage plants Groundcovers Interior plantscapes	Adelgids Aphids Japanese beetles Lace bugs Leaf beetles (including elm and viburnum leaf beetles)	Leafhoppers (including glassy-winged sharp-shooter) Mealybugs Psyllids Sawfly larvae Thrips (suppression) Whiteflies	MERIT 75 WP (level measure) 0.25 tsp. 0.5 tsp. 1 tsp. 2.5 tsp. 5 tsp. 3 Tbsp. + 1 tsp.	<u>WATER</u> 2.5 gal. 5 gal. 10 gal. 25 gal. 50 gal. 100 gal.
Foliar Applications: Start treatments prior to establishment of high pest populations and reapply on an as needed basis.				
White grub larvae (such as Japanese beetle larvae, Chafers, <i>Phyllophaga</i> spp. Asiatic garden beetle, Oriental beetle)			3 to 4 level teaspoons per 1,000 sq. ft.	
Broadcast Applications: Mix required amount of product in sufficient water to uniformly and accurately cover the area being treated. Do not use less than 2 gallons of water per 1000 sq ft. For optimum control, irrigate thoroughly to incorporate MERIT 75 WP Insecticide into the upper soil profile. Refer to use directions specific for FLOWERS and GROUNDCOVERS concerning additional use directions.				

RECOMMENDED APPLICATIONS

Trees, Shrubs, Flowers and Groundcovers

For use only in and around industrial and commercial buildings, and residential areas and state, national, and private wooded and forested areas to control the insect pests listed below:

Adelgids	Flatheaded borers	Leafhoppers (including	Sawfly larvae
Aphids	(including bronze birch	glassy-winged sharp-	Soft scales
Armored scales (sup-	borer and alder borer)	shooter)	Thrips (suppression)
pression)	Japanese beetles	Leafminers	White grub larvae
Black vine weevil larvae	Lace bugs	Mealybugs	Whiteflies
Emerald ash borer	Leaf beetles (including	Pine tip moth larvae	
Eucalyptus longhorned	elm and viburnum leaf	Psyllids	
borer	beetles)	Royal palm bugs	

Trees	0.7 to 1.4 level teaspoons MERIT 75 WP Insecticide per inch of trunk diameter (D.B.H.) or 1 to 2 ounces per 30 cumulative inches of trunk diameter(D.B.H)
-------	---

Soil Injection: GRID SYSTEM: Holes should be spaced on 2.5 foot centers, in a grid pattern, extending to the drip line of the tree. CIRCLE SYSTEM: Apply in holes evenly spaced in circles, (use more than one circle dependent upon the size of the tree) beneath the drip line of the tree extending in from that line. BASAL SYSTEM: Space injection holes evenly around the base of the tree trunk no more than 6 to 12 inches out from the base.

Mix required dosage in sufficient water to inject an equal amount of solution in each hole. Maintain a low pressure and use sufficient solution for distribution of the liquid into the treatment zone. For

RECOMMENDED APPLICATIONS (continued)
Trees, Shrubs, Flowers and Groundcovers

optimum control, keep the treated area moist for 7 to 10 days. Do not use less than 4 holes per tree.
No Soil Injection Applications Allowed in Nassau or Suffolk Counties of New York.
Soil Drench: Uniformly apply the dosage in no less than 10 gallons of water per 1000 square feet as a drench around the base of the tree, directed to the root zone. Remove plastic or any other barrier that will stop solution from reaching the root zone.
For Control of Specified Borers: Application to trees already heavily infested may not prevent the eventual loss of the trees due to existing pest damage and tree stress.

Shrubs	0.7 to 1.4 level teaspoons MERIT 75 WP Insecticide per foot of shrub height or 1 to 2 ounces per 30 cumulative feet of shrub height
--------	---

Soil Injection: Apply to individual plants using dosage indicated.
Mix required dosage in sufficient water to inject an equal amount of solution in each hole. Maintain a low pressure and use sufficient solution for distribution of the liquid into the treatment zone. Keep the treated area moist for 7 to 10 days. Do not use less than 4 holes per shrub.
No Soil Injection Applications Allowed in Nassau or Suffolk Counties of New York.
Soil Drench: Uniformly apply the dosage in no less than 10 gallons of water per 1000 square feet as a drench around the base of the shrub, directed to the root zone. Remove plastic or any other barrier that will stop solution from reaching the root zone.

RECOMMENDED APPLICATIONS (continued)
Trees, Shrubs, Flowers and Groundcovers

Flowers and Groundcovers	3 to 4 level teaspoons MERIT 75 WP Insecticide per 1000 sq. ft.
--------------------------	--

Apply as a broadcast treatment and incorporate into the soil before planting or apply after plants are established. If application is made to established plants, optimum control will be attained if area is irrigated thoroughly after application.

NOTE: 1 level teaspoon = 1.4 grams MERIT 75 WP
 3 level teaspoons = 1 level Tablespoon

RECOMMENDED APPLICATIONS
 For use only in and around residential areas

CROP	PEST	RATE PER APPLICATION	
Pome Fruits Apple Crabapple Loquat Mayhaw Pear Pear (oriental) Quince	Aphids (except Woolly apple aphid) Leafhoppers (including glassy-winged sharpshooter) Leafminer Mealybugs* San Jose scale*	0.5 oz (3 Tbsp. + 1 tsp.) per 100 gal	2 oz per acre ¹

RECOMMENDED APPLICATIONS (continued)

For use only in and around residential areas

Apply specified dosage as foliar spray as needed after petal-fall is complete.

For control of rosy apple aphid, apply prior to leafrolling caused by the pest.

For first generation leafminer control, make first application as soon as petal-fall is complete.

Greatest leafminer control will result from the earliest possible application. For second and succeeding generations of leafminer, optimal control is obtained from applications made early in the adult flight against egg and early instar larvae. A second application may be required 10 days later if severe pressure continues or if generations are overlapping. A single application may result in suppression only. MERIT 75 WP will not control late stage larvae.

For San Jose Scale, time applications to the crawler stage. Treat each generation.

For late season (preharvest) control of leafhopper species, apply MERIT 75 WP while most leafhoppers are in the nymphal stage.

For optimal control of mealybug, insure good spray coverage of the trunk and scaffolding limbs or other resting sites of the mealybug.

Do not apply more than 2 ounces per acre in a single application. Do not make more than 5 applications.

Allow 10 or more days between applications. Allow at least 7 days between last application and harvest.

* Not for use in California for control on pears.

RECOMMENDED APPLICATIONS (continued)

For use only in and around residential areas

CROP	PEST	RATE PER APPLICATION	
Pecan*	Yellow pecan aphid Black margined aphid Pecan leaf phylloxera Pecan spittlebug Pecan stem phylloxera	0.5 oz (3 Tbsp. + 1 tsp.) per 100 gal	2.0 oz per acre ¹

Make foliar applications as pests begin to build before populations become extreme. Two applications at a 10 to 14 day interval may be required to achieve control. Scout and retreat if needed. Thorough uniform coverage of foliage is necessary for optimal control. Addition of an organosilicone-based spray adjuvant at a rate not to exceed the adjuvant manufacturer's recommended use rate may improve coverage.

Do not apply more than a total of 6 ounces of MERIT 75 WP Insecticide per acre per year. Do not make more than 3 applications.

Allow 10 or more days between applications.

*Use on pecans not permitted in California unless directed by specific supplemental labeling.

¹ The amount of MERIT 75 WP Insecticide required per acre will depend on tree size and volume of foliage present. The rate per acre is based on a standard of 400 gallons of dilute spray solution per acre for large trees.

NOTE: 1 level teaspoon = 1.4 grams MERIT 75 WP Insecticide
3 level teaspoons = 1 level Tablespoon

RECOMMENDED APPLICATIONS

For use only in and around industrial and commercial buildings and residential areas

CROP	PEST	RATE PER APPLICATION	
Grapes	Leafhoppers (including glassy-winged sharpshooter) Mealybugs	0.5 oz (3 Tbsp. + 1 tsp.) per 100 gal	1.0 oz per acre
Apply specified dosage as a foliar spray using 200 gallons of water per acre. Do not apply more than a total of 2.0 ounces of MERIT 75 WP Insecticide per acre per year. Allow at least 14 days between applications. Applications may be applied up to and including day of harvest.			
NOTE: 1 level teaspoon = 1.4 grams MERIT 75 WP Insecticide 3 level teaspoons = 1 level Tablespoon			

RESTRICTIONS

Do not graze treated areas or use clippings from treated areas for feed or forage. Avoid runoff or puddling of irrigation water following application. Keep children and pets off treated area until dry. Avoid application of MERIT 75 WP Insecticide to areas which are water logged or saturated, or frozen, which will not allow penetration into the root zone of the plant. Do not apply more than 8.6 oz (0.4 lb of active ingredient) per acre per year.

Treated areas may be replanted with any crop specified on an imidacloprid label, or with any crop for which a tolerance exists for the active ingredient.

For crops not listed on an imidacloprid label, or for crops for which no tolerances for the active ingredi-

ent have been established, a 12-month plant-back interval should be observed.

IMPORTANT: READ BEFORE USE

Read the entire Directions for Use, Conditions, Disclaimer of Warranties and Limitations of liability before using this product.

If terms are not acceptable, return the unopened product container at once. By using this product, user or buyer accepts the following Conditions, Disclaimer of Warranties and Limitations of Liability.

CONDITIONS: The directions for use of this product are believed to be adequate and must be followed carefully. However, it is impossible to eliminate all risks associated with the use of this product. Crop injury, ineffectiveness or other unintended consequences may result because of such factors as weather conditions, presence of other materials, or the manner of use or application, all of which are beyond the control of Bayer CropScience LP. All such risks shall be assumed by the user or buyer.

DISCLAIMER OF WARRANTIES: TO THE EXTENT CONSISTENT WITH APPLICABLE LAW, BAYER CROPSCIENCE LP MAKES NO OTHER WARRANTIES, EXPRESS OR IMPLIED, OF MERCHANTABILITY OR OF FITNESS FOR A PARTICULAR PURPOSE OR OTHERWISE, THAT EXTEND BEYOND THE STATEMENTS MADE ON THIS LABEL. No agent of Bayer CropScience is authorized to make any warranties beyond those contained herein or to modify the warranties contained herein. BAYER CROPSCIENCE LP DISCLAIMS ANY liability whatsoever for special, incidental or consequential damages, resulting from the use or handling of this product.

LIMITATIONS OF LIABILITY: TO THE EXTENT CONSISTENT WITH APPLICABLE LAW, THE EXCLUSIVE REMEDY OF THE USER OR BUYER FOR ANY AND ALL LOSSES, INJURIES OR DAMAGES RESULTING FROM THE USE OR HANDLING OF THIS PRODUCT, WHETHER IN CONTRACT, WARRANTY, TORT, NEGLIGENCE, STRICT LIABILITY OR OTHERWISE, SHALL NOT EXCEED THE PURCHASE PRICE PAID, OR AT BAYER CROPSCIENCE LP'S ELECTION, THE REPLACEMENT OF PRODUCT.

MERIT 75 WP Insecticide is specially formulated and sold by Bayer CropScience LP for the control of insects according to the directions on this label. The purchase price of MERIT 75 WP Insecticide includes a prepaid license under which purchaser agrees to employ the purchased quantity of MERIT 75 WP Insecticide only for the above-specified uses and to provide notice of the terms and conditions of this license to any subsequent purchaser. Uses of MERIT 75 WP Insecticide other than those specified on this label are not licensed through the purchase of this product.

Bayer (reg'd), the Bayer Cross (reg'd), Merit® and Backed by Bayer™ are trademarks of Bayer.



Produced for:

Bayer Environmental Science
A Business Group of Bayer CropScience LP

Bayer Environmental Science
2 T. W. Alexander Drive
Research Triangle Park, NC 27709
www.BackedByBayer.com



MERIT® 75 WP

Insecticide

For foliar and systemic insect control in turfgrass (including sod farms), landscape ornamentals, fruit and nut trees, and interior plantscapes.

ACTIVE INGREDIENT:

Imidacloprid, 1-[(6-Chloro-3-pyridinyl)methyl]-N-nitro-2-imidazolidinimine..... 75.0%

OTHER INGREDIENTS: 25.0%
100.0%

EPA Reg. No. 432-1314 EPA Est. indicated by 2nd and 3rd digits of the batch number on this package.
(85) = 065387-AR-002 (98) = 33967-NJ-1

3549171 060922A

**STOP - Read the label before use.
Keep out of reach of children.**

CAUTION

PRECAUTIONARY STATEMENTS HAZARDS TO HUMANS AND DOMESTIC ANIMALS CAUTION

Harmful if swallowed, inhaled, or absorbed through skin. Causes eye irritation. Avoid contact with skin, eyes, or clothing. Avoid breathing dust or vapor. Wash thoroughly with soap and water after handling. Remove contaminated clothing and wash before reuse. Keep children or pets off treated area until spray is dry.

ENVIRONMENTAL HAZARDS

This product is highly toxic to aquatic invertebrates. Do not apply directly to water, or to areas where surface water is present or to intertidal areas below the mean high water mark. Do not contaminate water when disposing of equipment washwaters.

Refer to attached leaflet for complete Directions for Use, Precautionary Statements and Storage and Disposal Instructions.

**BACKED
by BAYER.**

FIRST AID

If swallowed	<ul style="list-style-type: none"> • Call a poison control center or doctor immediately for treatment advice. • Have person sip a glass of water if able to swallow. • Do not induce vomiting unless told to do so by a poison control center or doctor. • Do not give anything by mouth to an unconscious person.
If on skin or clothing	<ul style="list-style-type: none"> • Take off contaminated clothing. • Rinse skin immediately with plenty of water for 15 to 20 minutes. • Call a poison control center or doctor for treatment advice.
If in eyes	<ul style="list-style-type: none"> • Hold eye open and rinse slowly and gently with water for 15 to 20 minutes. Remove contact lenses, if present, after the first 5 minutes, then continue rinsing eye. • Call a poison control center or doctor for treatment advice.

In case of emergency call toll free the Bayer Environmental Science Emergency Response Telephone No. 1-800-334-7577. Have a product container or label with you when calling a poison control center or doctor, or going for treatment.

Note To Physician: No specific antidote is available. Treat the patient symptomatically.



Produced for:

Bayer Environmental Science
A Business Group of Bayer CropScience LP

Bayer Environmental Science
2 T. W. Alexander Drive
Research Triangle Park, NC 27709
www.BackedByBayer.com

NOTE: When this document is printed at 100% (actual size), this text is 6 pt Helvetica 75 Bold. When this document is printed at 100% (actual size), this text is 6 pt HelveticaNeue Condensed.



Tempriid[®]
READYSpray

INSECTICIDE

CONTROLS: Ants (excluding fire ants), bed bugs, black widow spiders, boxelder bugs, brown recluse spiders, brown widow spiders, carpenter ants, carpenter bees, carpet beetles, centipedes, clothes moths, cluster flies, cockroaches, crickets, earwigs, elm leaf beetles, firebrats, fleas, flies, fruit flies, flour beetles, globular stink (kudzu) bugs, gnats, grain weevils, hide beetles, house flies, learder beetles, millipedes, mosquitoes, moths, multicolored Asian lady beetles, phorid flies, pill bugs, sciarid flies (fungus gnats), scorpions, silverfish, sow bugs, spiders, springtails, stable flies, ticks, wood-infesting beetles, and wasps.

FOR USE IN AND AROUND: Apartment buildings, bakeries*, bottling facilities*, breweries*, cafeterias*, correctional facilities, factories, hospitals, hotels, houses, industrial buildings, kitchens, laboratories, livestock housing, pet kennels, manufacturing establishments, nursing homes, poultry houses*, processing and packing plants*, restaurants*, schools, stores, warehouses, and modes of transport (airplanes, automobiles, buses, marine vessels, rail cars, trailers, trucks).

* non-food/non-feed areas

Dual mode of action: contact activity and systemic action

Control of hard to kill pest such as spiders, ants (excluding fire ants), and bed bugs

Kills bed bugs resistant to pyrethroid insecticides

Kills bed bug eggs

Controls bed bugs for up to 6 months on wooden, fabric or upholstered surfaces

Will not damage paints, plastics, fabrics, or other surfaces where water alone causes no damage

ACTIVE INGREDIENTS:

Imidacloprid, 1-[(6-Chloro-3-pyridinyl)methyl]-N-nitro-2-imidazolidinimine 0.050%

β-Cyfluthrin, Cyano(4-fluoro-3-phenoxyphenyl)methyl(3-[2,2-dichloroethenyl]-

2,2-dimethyl-cyclopropanecarboxylate 0.025%

OTHER INGREDIENTS: 99.925%

TOTAL: 100.000%

EPA Reg. No. 432-1527

**STOP - Read The Label Before Use.
KEEP OUT OF REACH OF CHILDREN**

For **MEDICAL** and **TRANSPORTATION** Emergencies **ONLY** Call 24 Hours A Day 1-800-334-7577
For **PRODUCT USE** Information Call 1-800-331-2867

PRECAUTIONARY STATEMENTS ENVIRONMENTAL HAZARDS

This pesticide is extremely toxic to wildlife, fish, and aquatic invertebrates. Care should be used when spraying around ornamental ponds. Do not apply directly to water or to areas where surface water is present or intertidal areas below the mean high water mark.

PHYSICAL & CHEMICAL HAZARDS

Contents under pressure. Do not puncture or incinerate container. Exposure to temperatures above 120°F may cause bursting. Do not spray directly into any electrical equipment such as radios, televisions, computers, etc. (where there is exposed wiring or contact points) due to the possibility of short circuits and shock hazard.

Net Contents:

15 Fl Oz
80867395
80876777A 130611AV1

Produced for:
Bayer Environmental Science
A Division of Bayer CropScience LP
2 T. W. Alexander Drive
Research Triangle Park, NC 27709



DIRECTIONS FOR USE

It is a violation of federal law to use this product in a manner inconsistent with its labeling.

SHAKE WELL BEFORE USE

For indoor or outdoor use as either a crack and crevice injection or spot treatment. Use this product with the supplied actuator or injection tubes; this product can also be used in aerosol application equipment.

Application Restrictions:

- Do not contact treated surfaces until dry. People and pets may re-enter after the treated area is dry.
- Do not apply in food/feed areas of food and feed handling establishments.
- Do not apply in classrooms, hospital, and/or nursing home rooms while they are occupied.
- Do not treat areas of furniture or upholstery where prolonged contact with humans will occur.
- Do not spray bed linens or other materials which come in direct contact with occupants of the bed.
- In the home, cover or thoroughly wash all food processing surfaces and utensils following treatment. Cover exposed food or remove from area being treated.
- Do not apply directly to impervious horizontal surfaces such as sidewalks, driveways, and patios except as a spot or crack and crevice treatment. During application, do not allow pesticide to enter or run off into storm drains, drainage ditches, gutters, or surface waters.
- All outdoor applications must be limited to spot or crack and crevice treatments only.

When to apply: Apply when pests are seen or found. Reapply every 7 to 10 days until infestation is eliminated.

Crack and crevice treatment: Inject into cracks and crevices or void spaces where insects may be harboring, living, and breeding. Place injector tip into cracks, crevices, holes, and other small openings.

In light infestations or maintenance treatments, move the injection tube along cracks and crevices at the rate of 1 linear foot per second. For heavy infestations or clean-out treatments, move the injection tube along cracks and crevices at the rate of 6 inches per second. In enclosed void spaces, after calculating the void's cubic area, apply at a rate of 2 seconds per cubic feet. Several holes may be required in long-running voids.

Spot treatment: Hold nozzle between 12 to 18 inches from the surface to be treated. Release product at a rate of 4 seconds per 2 square feet. Each spot treatment must not exceed 2 square feet.

Crawling pests: Indoors, treat into and around known or suspected pest harborage and entry points, such as around water pipes and other utility lines, doors, windows, behind baseboards and molding, behind cabinetry and in cracks and crevices in cabinets, drawers and shelves, beneath and behind refrigerators, washing machines, and stoves. Make spot treatments in corners, to flooring beneath furniture, in closets and storage areas.

Outdoors, apply as a crack and crevice or spot treatment to surfaces on buildings, porches, patios, and other structures, openings around doors and windows, eaves and attic vents, utility entry points, weep holes, soffit areas and other exterior openings (including foundation cracks or drilled holes) where these pests may enter the structure or where they have been seen or found, or can find shelter.

Bed bugs: Spray bugs and eggs directly wherever possible; this product kills bed bug eggs that are directly treated and young nymphs emerging from eggs are killed by dried residues.

Remove linens and wash before reuse. On infested mattresses, apply only as spot treatment to tufts, seams, folds, and edges until moist; allow mattress to dry before remaking bed. Apply to bedspreads, box springs, and the interior of bed frames or headboards, including all cracks and joints.

When upholstered furniture is infested, apply as spot treatment only to the infested tufts, seams, folds and edges.

Apply as a crack and crevice treatment to all baseboards, moldings, beneath floor coverings and carpets, closets, shelves, curtains, furniture and picture frames that may provide harborage to bed bugs. Inside empty luggage, apply to seams, folds and edges until moist; remove all clothes and other articles from luggage before application and allow treated areas to thoroughly dry before use.

Ants (excluding fire ants): Indoors, apply to trails on walls or baseboards, around pipes, under cabinets, and other places where ants are active, but try to follow trails back to where ants may be nesting or entering the structure and treat these locations.

Outdoors, treat around windows and doors, along sidewalks, or other areas where ants are seen. Locate and treat ant nests, if possible; follow trails of foraging workers, check under objects near the structure, and inspect other likely nest sites. Where ant nests are located in tree hollows or non-structural wooden construction (e.g.;

posts, fences, decks), treat the interior cavity and/or the nest site by injecting a sufficient volume of product.

Ticks and fleas: Apply spot treatments on and around pet sleeping quarters and bedding, and as a crack and crevice or void treatment around the pet's habitat. Treat carpeting, furniture, and floor coverings where fleas and ticks are found. One application will kill adult fleas for 2 to 3 months, and aids in control of larval flies for up to 1 month. **Flying insect pests:** Apply to surfaces where house flies or other listed flying insects congregate, collect or rest.

Wasps: Make applications directly into nests. Remove and destroy treated nests if possible, or retreat nests as necessary.

Carpenter bees: Apply the spray directly into gallery entrance holes. Exterior wood surfaces may be treated to prevent nest cavity excavation by adult carpenter bees.

Occasional or fall invaders: Apply directly to listed insects that have congregated around doors, windows or similar areas where they may enter structures.

Wood-infesting beetles: Locate active galleries. Penetrate the gallery system by drilling holes to receive the injector tip. Inject spray into the gallery system. Drill holes in commonly occupied areas should be sealed after treatment. Avoid drilling (to access voids) where electrical wiring, plumbing lines, etc. are located.

For inaccessible surfaces, drill and treat the interior of structural voids. Apply the spray to the wood surface using sufficient volume to cover the surface, but avoid applying to the point of runoff. When spraying wood surfaces overhead in living areas, cover surfaces below the treated area with plastic sheeting or similar material.

STORAGE AND DISPOSAL

Do not contaminate water, food, or feed by storage or disposal.

PESTICIDE STORAGE:

Store in a cool, dry area. Store away from food and pet food.

PESTICIDE DISPOSAL AND CONTAINER HANDLING: Do not puncture or incinerate! Non-refillable container. Do not reuse or refill this container.

If empty: Place in trash or offer for recycling if available.
If partly filled: Call your local solid waste agency for disposal instructions.

IMPORTANT: READ BEFORE USE

Read the entire Directions for Use, Conditions, Disclaimer of Warranties and Limitations of Liability before using this product. If terms are not acceptable, return the unopened product container at once.

By using this product, user or buyer accepts the following Conditions, Disclaimer of Warranties and Limitations of Liability.

CONDITIONS: The directions for use of this product are believed to be adequate and must be followed carefully. However, it is impossible to eliminate all risks associated with the use of this product. Crop injury, ineffectiveness or other unintended consequences may result because of such factors as weather conditions, presence of other materials, or the manner of use or application, all of which are beyond the control of Bayer CropScience LP. All such risks shall be assumed by the user or buyer.

DISCLAIMER OF WARRANTIES: TO THE EXTENT CONSISTENT WITH APPLICABLE LAW, BAYER CROPSCIENCE LP MAKES NO OTHER WARRANTIES, EXPRESS OR IMPLIED, OF MERCHANTABILITY OR OF FITNESS FOR A PARTICULAR PURPOSE OR OTHERWISE, THAT EXTEND BEYOND THE STATEMENTS MADE ON THIS LABEL. No agent of Bayer CropScience LP is authorized to make any warranties beyond those contained herein or to modify the warranties contained herein. TO THE EXTENT CONSISTENT WITH APPLICABLE LAW, BAYER CROPSCIENCE LP DISCLAIMS ANY LIABILITY WHATSOEVER FOR SPECIAL, INCIDENTAL OR CONSEQUENTIAL DAMAGES RESULTING FROM THE USE OR HANDLING OF THIS PRODUCT.

LIMITATIONS OF LIABILITY: TO THE EXTENT CONSISTENT WITH APPLICABLE LAW, THE EXCLUSIVE REMEDY OF THE USER OR BUYER FOR ANY AND ALL LOSSES, INJURIES OR DAMAGES RESULTING FROM THE USE OR HANDLING OF THIS PRODUCT, WHETHER IN CONTRACT, WARRANTY, TORT, NEGLIGENCE, STRICT LIABILITY OR OTHERWISE, SHALL NOT EXCEED THE PURCHASE PRICE PAID, OR AT BAYER CROPSCIENCE LP'S ELECTION, THE REPLACEMENT OF PRODUCT.

Bayer (reg'd), the Bayer Cross (reg'd), Tempriid[®] and Backed by Bayer[™] are trademarks of Bayer.

Bayer

DOT 2Q M5749 DSC

