

# Port of Port Orford





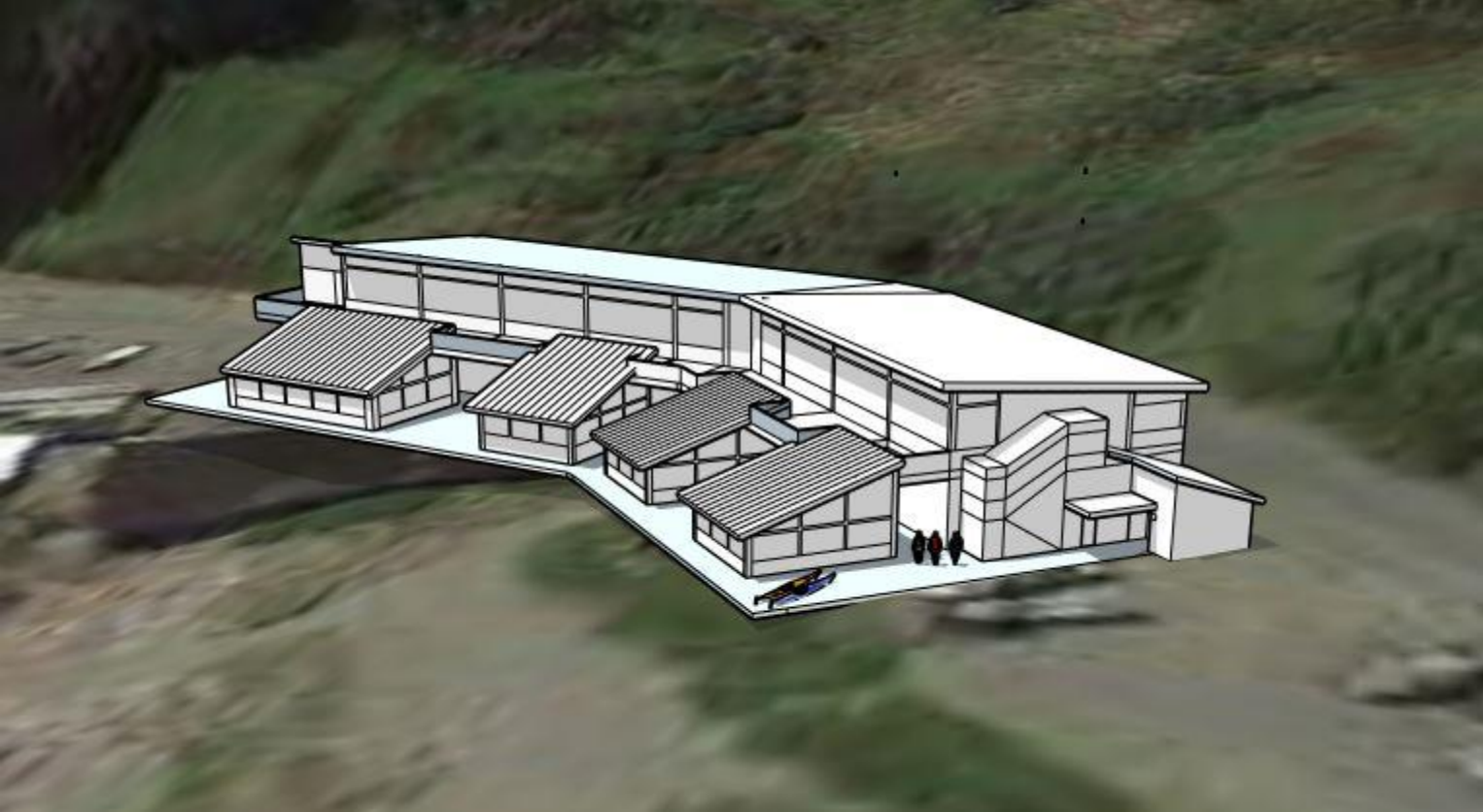
Sam Scaffo – Board President  
Steve Courtier – Port Manager















# Port of Port Orford Cannery Redevelopment Project Cost Analysis

Total Project Cost \$7.5M

## Funders

- State - \$0.4M + \$2.1M?
- EDA - \$3M (with 50/50 match)
- WRCA - ?
- TFFA - ?
- Others - ?
- Port of Port Orford - TBD

