

# Legislative Policy and Research Office

Presentation to Joint Ways and Means  
Subcommittee on General Government

March 29, 2017

# Legislative Policy and Research Office (LPRO)

Created by 2016 Legislation (SB 1569)

LPRO must:

- Prepare or assist in legislative research and facilitate the development of legislative policy,
- Provide advice and assistance to legislative committees,
- Provide staff management for committees and task forces, and
- Provide research facilities and services to members and committees of the Legislative Assembly.

# Current Status

- Builds on the work of the prior Committee Services office
- Currently operating under a Memorandum of Understanding with the Legislative Administration Committee
- LPRO's statutory existence begins July 1, 2017
- Oversight by a 12-member bipartisan, bicameral Joint Legislative Policy and Research Committee
  - Chaired by Senate President and House Speaker

# Mission

The **Legislative Policy and Research Office (LPRO)** serves the Oregon Legislative Assembly by providing centralized, professional and nonpartisan research, issue analysis and committee management services to inform deliberations and development of public policy.

# Values that guide our work

- Nonpartisanship
- Objectivity and accuracy
- Professionalism and accountability
- Excellent customer service
- Continuous learning and skills development
- Communication
- Collaboration
- Adaptability

# Session Activities

LPRO assigns an analyst and assistant to each legislative policy committee to assist its chairperson and members.

- Assist chairs with work plans and scheduling hearings
- Publish committee agendas and post meeting materials and amendments
- Coordinate amendment requests with LC and fiscal and revenue impact statements with LFO and LRO
- Assist with committee procedural issues
- Assist the public with navigating the legislative process
- Write staff measure summaries
- Produce committee recording logs and manage official committee record
- Assist with work groups
- Assist members on the Chamber floor
- Conduct research

# Interim Activities

During interims, LPRO will focus on research and analysis. Below are examples of LPRO's existing products and services.

- Background Briefs
- Summary of Legislation
- Staffing committees and coordinating activities during Legislative Days
- Staffing task forces and work groups
- Assisting with writing task force reports
- Answering constituent questions
- Conducting research projects

# LPRO is in the early stages of its evolution

- Working with Joint Legislative Policy and Research Committee to finalize plans for research this interim, our first opportunity to provide the enhanced research function required of us by last year's legislation
- Goals:
  - Best meet legislature's research needs while maximizing and making efficient use of LPRO staff
  - Build a strong, nonpartisan office—strong in expertise and respected as nonpartisan



# Budget Proposal

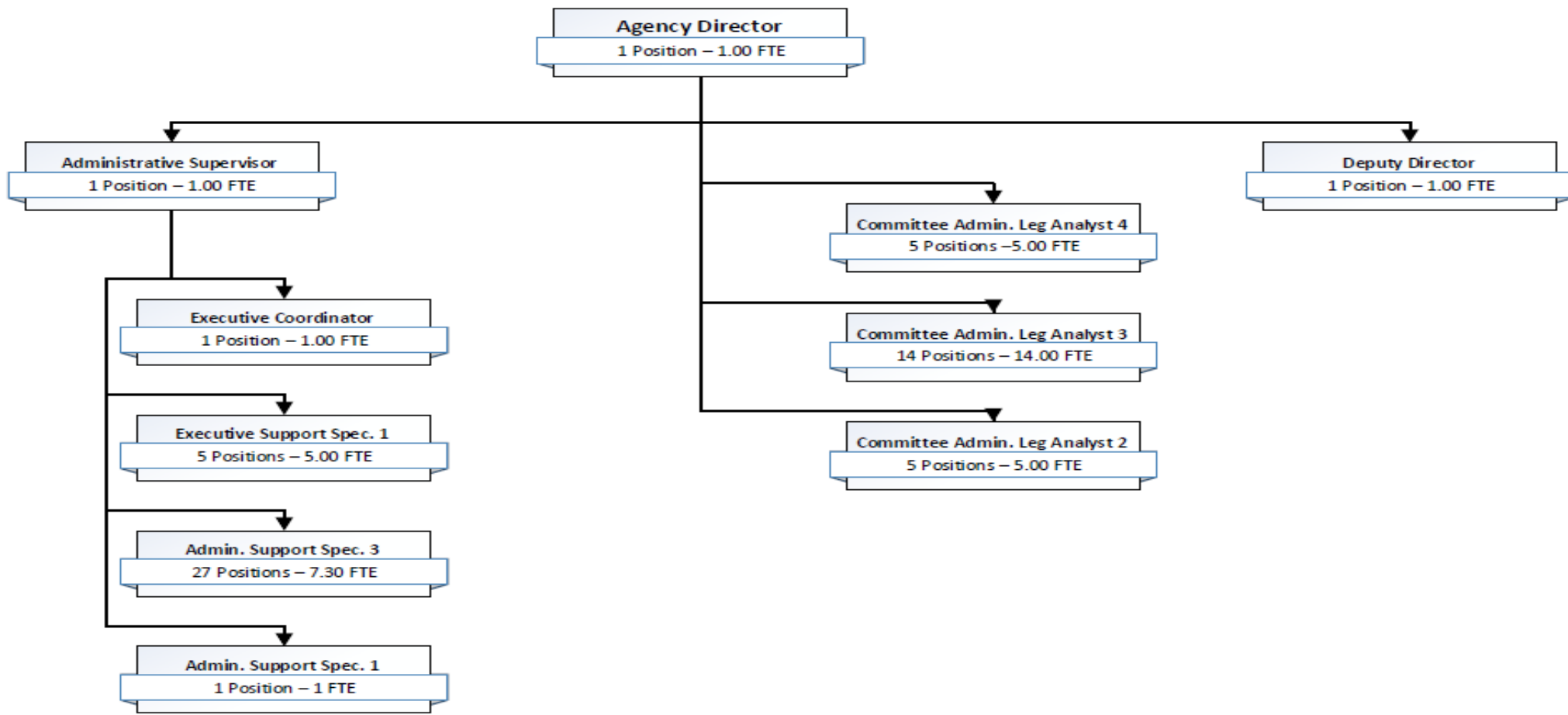
2017-2019 Budget: \$9,792,462

Personal services: \$9,235,793

Supplies and services : \$556,669

Staffing level (61 positions, 41.29 FTE)

- Includes several session support positions for LFO and LRO



# Planning Activities

- Establish internal procedures for conducting research and producing reports
- Support development of staff and policy expertise available to the legislature
- Improve existing office products and develop new ones
- Enhance research resources available to staff
- Attract/retain highly professional staff
- Improve use of technology