

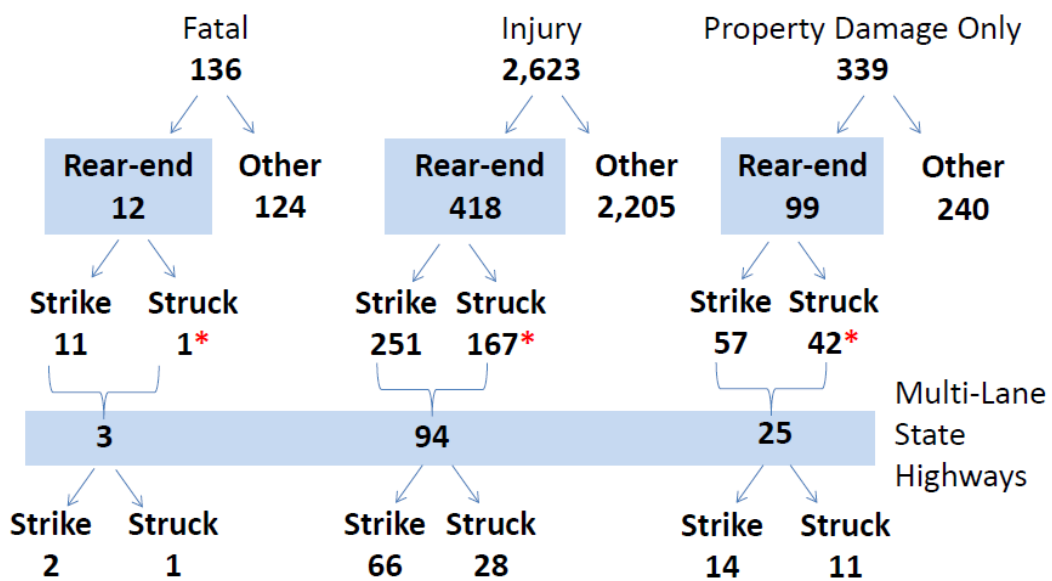
Oregon Department of Transportation

Response to Questions from Joint Committee on Ways and Means
Subcommittee on Transportation and Economic Development
March 21, 2017

What are the statistics in relation to motorcycles being rear-ended in traffic crashes in Oregon?

The chart below was included in ODOT's testimony on SB 385 presented on March 21, 2017 in the Senate Judiciary Committee.

2013-2015 Motorcycle Crashes – State Level – 3,098



*Includes motorcycles being hit by other motorcycles