



# Testimony

## Oregon House of Representatives Committee on Higher Education Tuesday, March 21, 2017

Paula Gubrud-Howe, EdD, RN, FAAN

Linda Wagner MN, RN

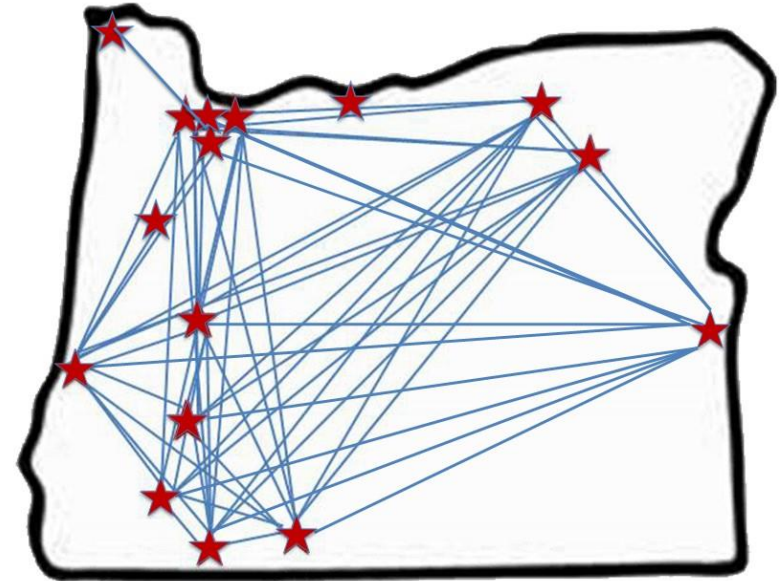
[www.ocne.org](http://www.ocne.org)

# OCNE is an Academic Partnership

- Includes 11 of Oregon's Community College Nursing Programs and all of OHSU School of Nursing Campuses (Ashland, Monmouth, Klamath Falls, La Grande, Portland)
- Designed to address the nursing shortage
- Co-creation of a shared curriculum featuring seamless progression for students – from partner community colleges to OHSU
- Through the consortium the shared curriculum is distributed throughout Oregon providing access to baccalaureate nursing degrees throughout the state

# Oregon Consortium for Nursing Education

- Blue Mountain Community College
- Clackamas Community College
- Clatsop Community College
- Lane Community College
- Mount Hood Community College
- OHSU Ashland
- OHSU Klamath Falls
- OHSU LaGrande
- OHSU Monmouth
- OHSU Portland
- Portland Community College
- Rogue Community College
- Southwestern Oregon Community College
- Treasure Valley Community College
- Umpqua Community College



Do not copy without permission

1

Implementing the Nursing Courses in 2018:

- Columbia Gorge Community College

# OCNE Faculty Leverage Our Collective Resources to Provide Seamless Academic Progression

The partnership supports

- A Shared Curriculum
- Documented agreements
  - Admissions
  - Progression
  - Courses
- Ongoing quality improvement



# The Seamless Academic Progression

- Provides Access to Baccalaureate Nursing Education Throughout Oregon
  - Provides an RN workforce for much of rural Oregon
  - Provides the gateway to a full scope of careers in Nursing for Oregon's rural citizens
  - All course work for the BS in Nursing provided in home community

# OCNE is Fiscally Efficient for Students

Improves Affordability for Students

- 3 years of community college tuition and
- 1 year of university tuition
- Community College OCNE graduates can work as RNs while finishing the BS,N degree
- Financial Aid eligibility for the entire curriculum



# OCNE is Fiscally Efficient for Schools

- Faculty can teach across OCNE schools
- Faculty share teaching/learning resources across campuses through networking platforms
- OCNE supports continued faculty development and mentoring for new faculty across all campuses
- OCNE will be critical for maintaining capacity in programs as the nursing faculty shortage accelerates.

# OCNE Continues to Add Partners



- Clatsop Community College began offering OCNE nursing courses this academic year
- Columbia Gorge Community College signed the Intergovernmental Agreement in 2016 and will launch the nursing courses in fall 2018
- All of Oregon's Community College ADN Programs are welcome to join OCNE



# OCNE Supports Innovation and Research

- Provides opportunities for community college students and faculty through collaboration with OHSU faculty
- Collaboration promotes innovation and educational research contributing to the science of learning
- OCNE supports required regulatory and accreditation requirements through continuous quality improvement – this is a big plus for small rural schools with few faculty
- Oregon's community college students have access to a degree granted from a top ranked Tier 1 University , i.e. OHSU



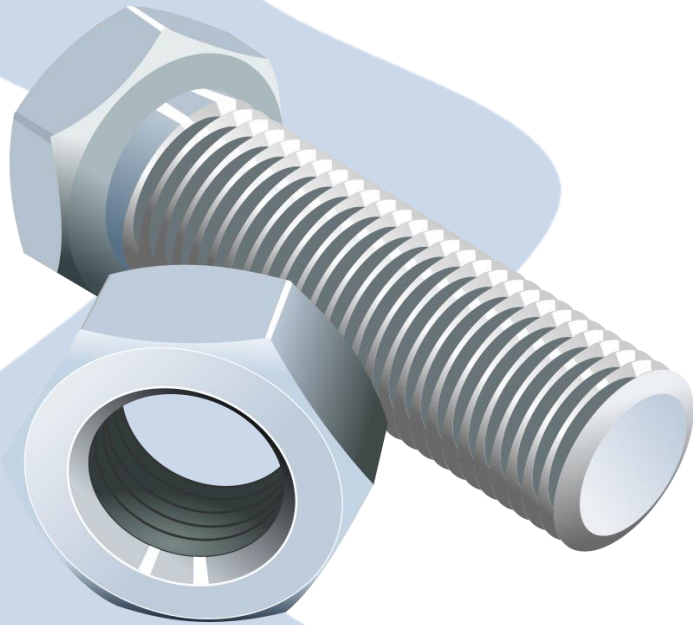
# OCNE Supports Innovation and Research

- Opportunities for nursing education research
- Multiple grants funded to support OCNE projects and evaluation
- Graduate students (Master's in Nursing Education and PhD) choose OHSU as OCNE provides a laboratory for innovation and research
- Dozens of publications and presentations provided by OCNE faculty nationally and internationally

# The Shared Curriculum

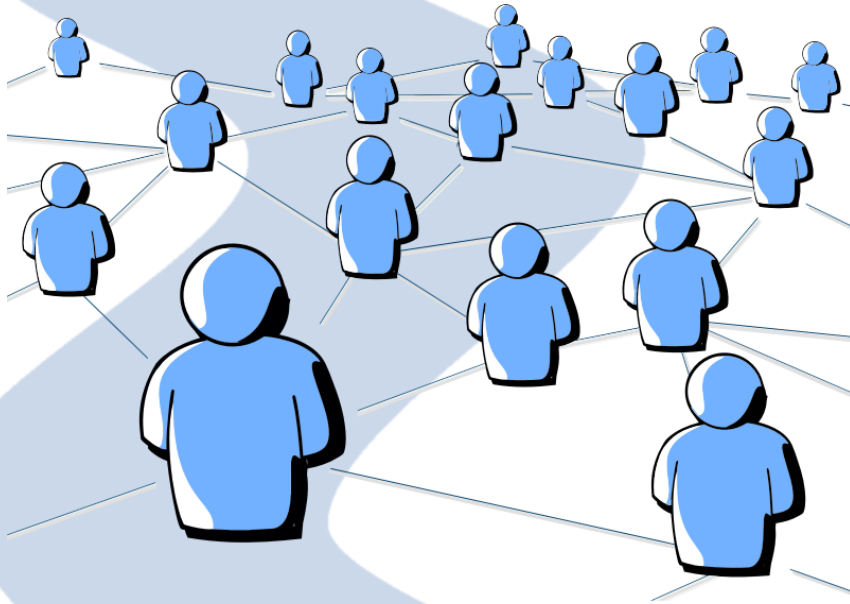
- Common prerequisites and admission criteria (Year 1)
- Shared Courses for first 2 years (5 terms) of the nursing curriculum (Years 2 & 3)
- Community College students earn an AAS in Nursing and are then eligible to take the NCLEX-RN licensing exam
- Community College OCNE students have full and part-time options to complete the final year of the curriculum to earn the BS in Nursing from OHSU

# Nuts and Bolts of Shared Courses



- Common course descriptions and outcomes
- Dual number for easy transferability (e.g. NRS 221/321 is the same course)
- Agreement about essential content and concepts to be included in each course
- Each campus can customize the content, add to it, determine sequence and determine the methodology used to meet the course outcomes

# Infrastructure



- OHSU provides the majority of administrative support for the consortium
  - Office space and supplies
  - Technology support needed to support meetings and collaboration
  - OCNE Faculty Development for all partner schools
  - FTE for OHSU/OCNE Program Director
- Rogue Community College
  - Supports FTE for Community College/OCNE Program Director

# If you build it, they will come

- Over 4000 OCNE graduates to date!
- NCLEX-RN results 88-100%
- Enrollment tripled in OHSU RN-BS Program- More than three times the number before OCNE
- 30-37% continually enrolled from Community College to OHSU
- OCNE recognized as national model and duplicated in more than a dozen states



Questions?