

# SB 385

Allows operators of motorcycles or mopeds to travel between adjacent lanes of traffic traveling in same direction under certain circumstances.



# **SB 385**

Allows operators of motorcycles or mopeds to travel between adjacent lanes of traffic traveling in same direction under certain circumstances.

## **Why?**

**1. Relieves congestion**

**2. Makes motorcyclists safer**

# SB 385

Allows operators of motorcycles or mopeds to travel between adjacent lanes of traffic traveling in same direction under certain circumstances.

## Why?

**1. Relieves congestion**

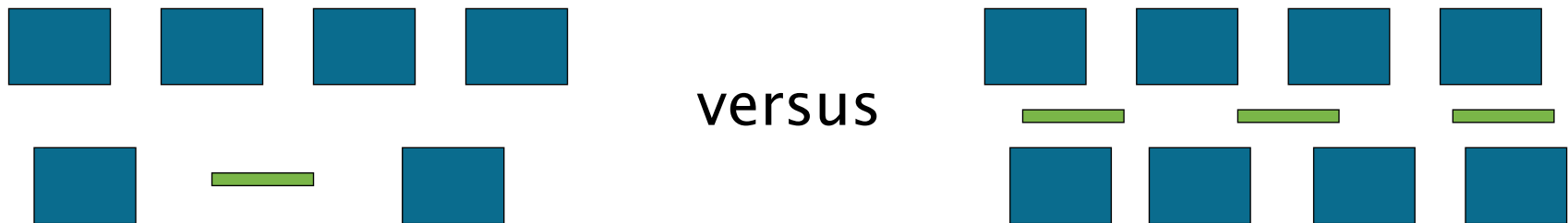
2. Makes motorcyclists safer

# Relieves congestion

- Portland traffic 8<sup>th</sup> worst in nation
- Worst *when* it matters most – commute time
- Worst *where* it matters most – highways and interstates
- Economic impact
- Governor Brown: “Mind-numbing congestion that degrades our quality of life”

# Relieves congestion

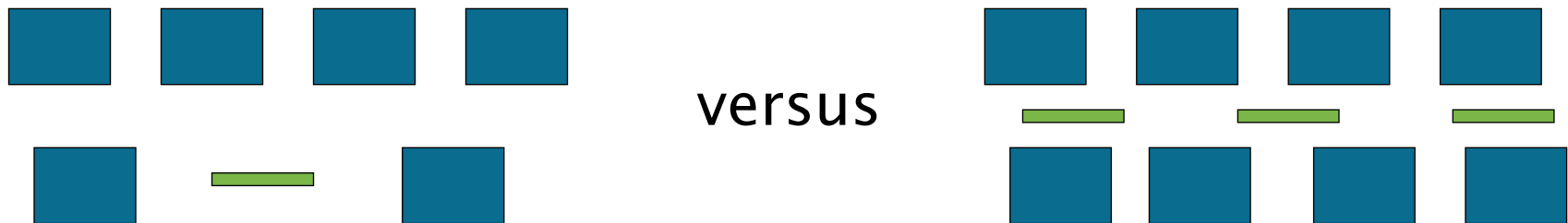
- Suppose 10% of cars switched to motorcycles and lane-share: “total time loss for all vehicles decreases by 40%”



Belgian Study (2013)

# Relieves congestion

- Suppose 10% of cars switched to motorcycles and lane-share: “total time loss for all vehicles decreases by 40%”
- Total emissions would “be reduced by 6%”
- Less idle time, greater fuel efficiency



# SB 385

Allows operators of motorcycles or mopeds to travel between adjacent lanes of traffic traveling in same direction under certain circumstances.

## Why?

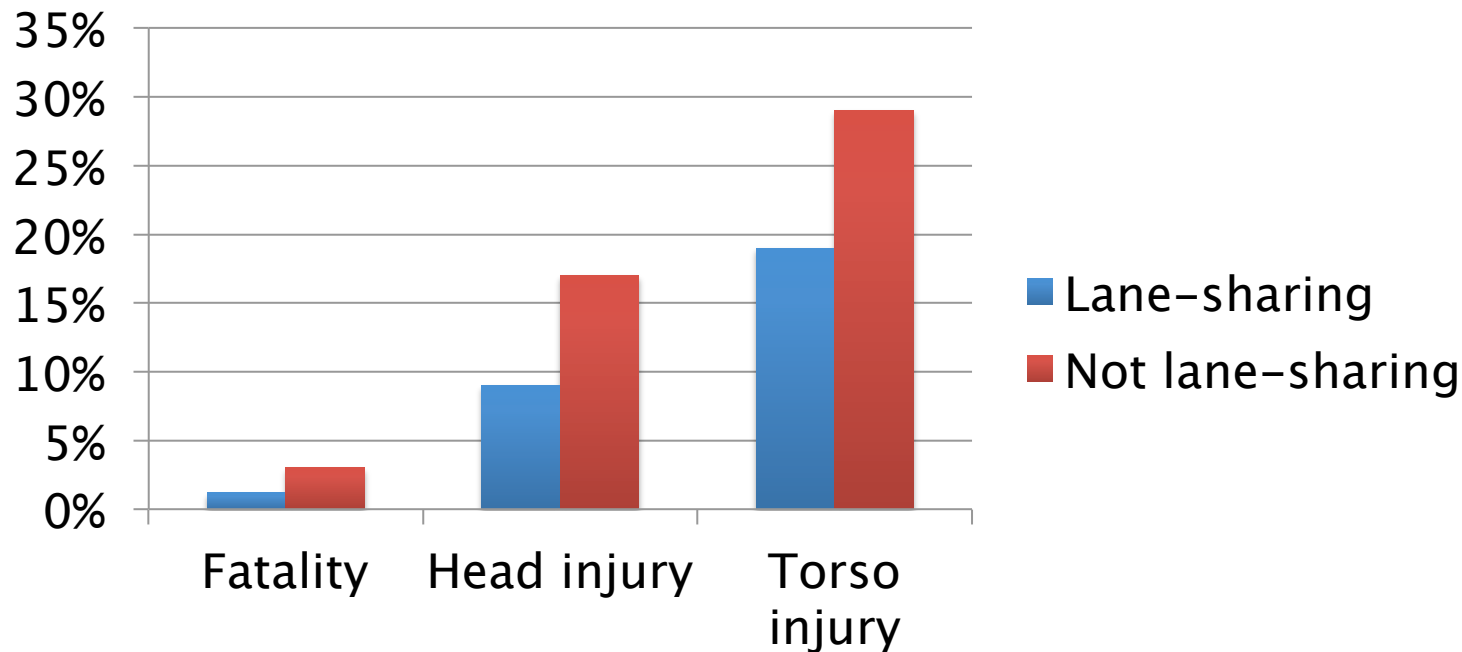
1. Relieves congestion

**2. Makes motorcyclists safer**

# Makes motorcyclists safer

Lane-sharing riders less likely to suffer:

- Fatal injury (1.2% lane-sharing vs. 3% not lane-sharing)
- Head injury (9% vs. 17%)
- Torso injury (19% vs. 29%)



U.C. Berkeley Study (2015)



# Makes motorcyclists safer

*“What we learned is, if you lane-split in a safe or prudent manner, it is no more dangerous than motorcycling in any other circumstance.”*

-- California Office of Traffic Safety spokesman Chris Cochran

# **SB 385**

Allows operators of motorcycles or mopeds to travel between adjacent lanes of traffic traveling in same direction under certain circumstances.

## **Why?**

**1. Relieves congestion**

**2. Makes motorcyclists safer**

# **SB 385**

Allows operators of motorcycles or mopeds to travel between adjacent lanes of traffic traveling in same direction under certain circumstances.

## **Why?**

- 1. Relieves congestion**
- 2. Makes motorcyclists safer**
- 3. National leadership opportunity**