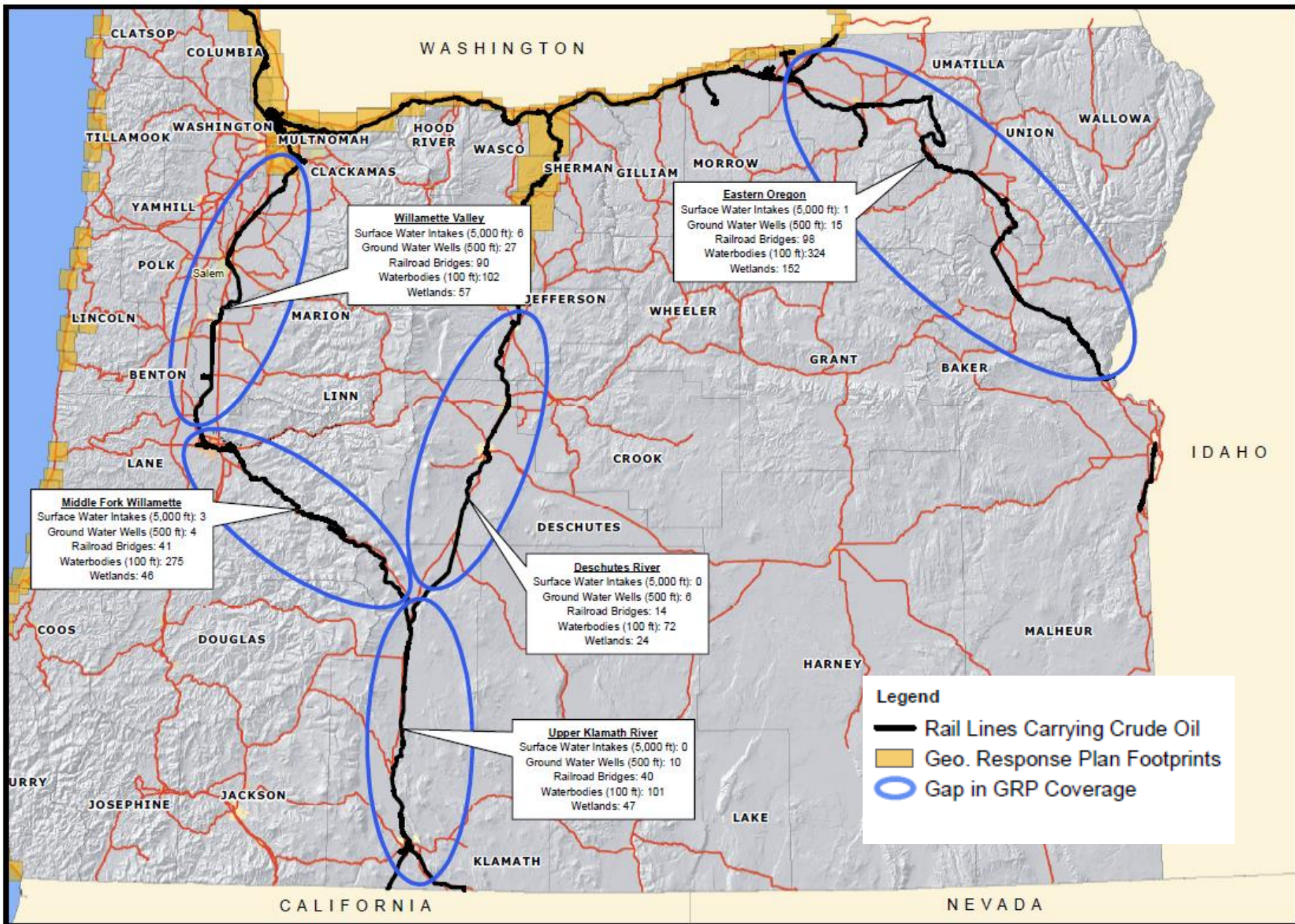
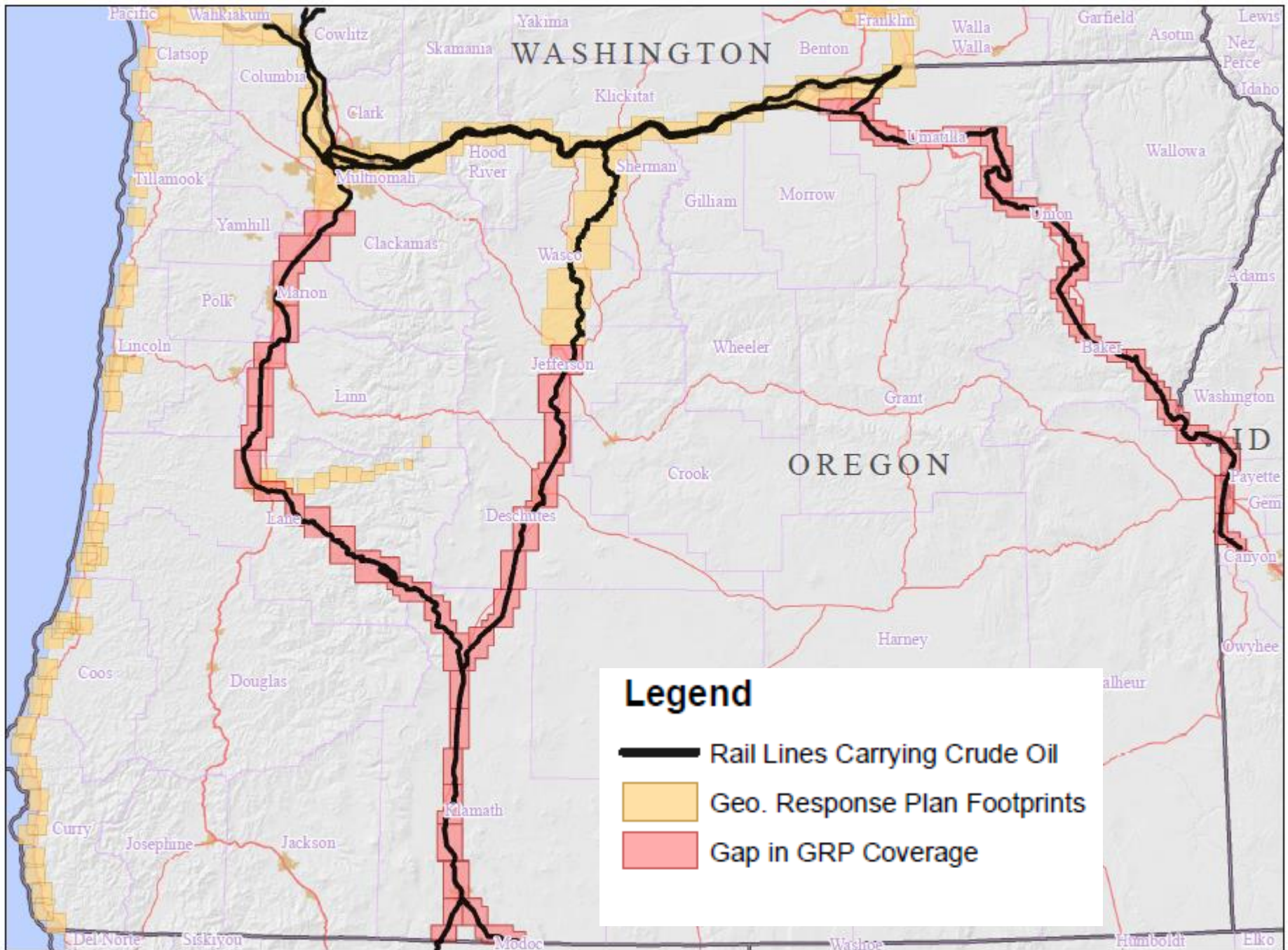


Emergency Response Program

Geographic Response Plans

Bruce Gilles, Manager
Cleanup and Emergency Response
March, 13, 2017





Geographic Response Plans:

Contents/Organization

GRPs include information about natural, cultural and economic Resources at Risk from oil spills...and the Equipment available and Strategies designed to respond to the spills

The information is organized by Sectors which facilitate data development and presentation

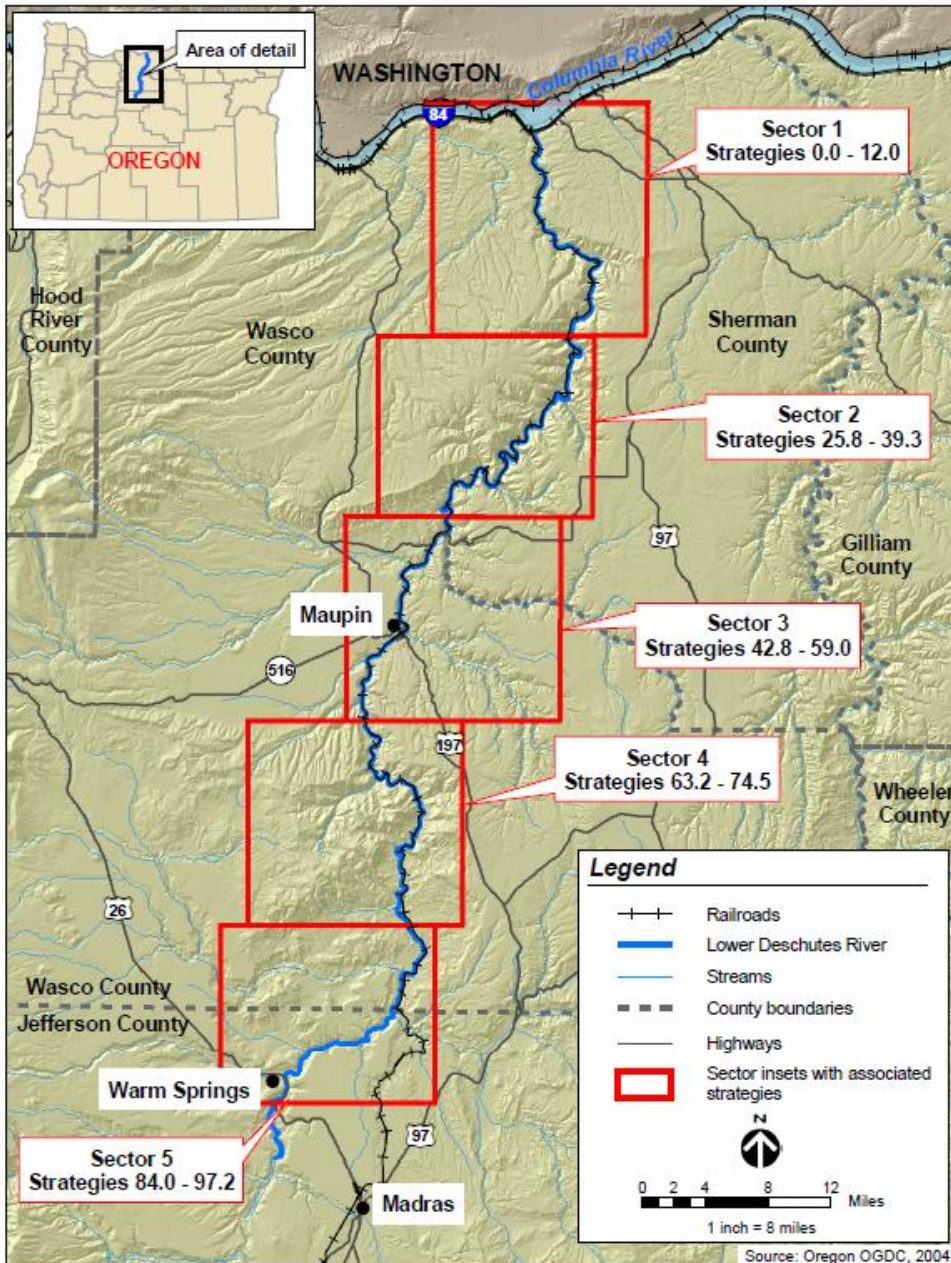


Figure 3-1. Vicinity map of the Lower Deschutes River Geographic Response Plan.

Geographic Response Plans: Strategies

GRP Strategies are developed to protect Resources at Risk from oil spills along high risk corridors

Response Strategies generally fall into the categories of collection, exclusion, diversion (of oil) or the notification of entities who may be able to limit damage through modified operations (such as shutting off drinking water withdrawals)

Designed to guide initial operations (first 24-48 hours) to reduce confusion and enable quick response

Form the basis for ongoing planning after the initial response phase

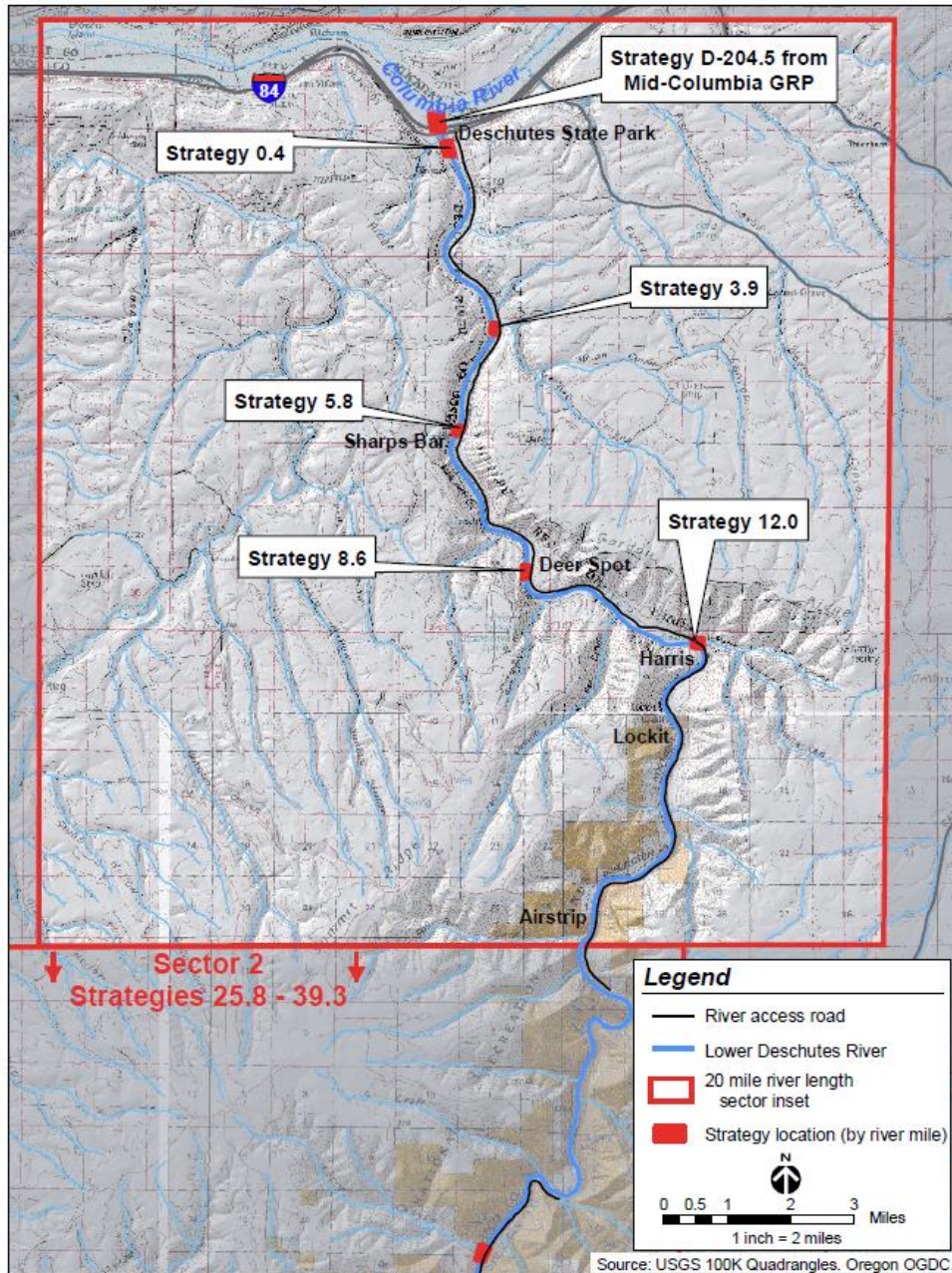


Figure 4a. Sector 1 (Strategies 0.0 - 12.0) index map of the Lower Deschutes River Geographic Response Plan.



[Link to specific strategy information](#)

[Link to previous strategy](#)

[Link to next strategy](#)

[Link to overview map](#)

Strategy 8.6

Proposed Booming and Collection Strategies
Lower Deschutes River Geographic Response Plan

0 250 500 1,000 1,500 2,000 Feet



Legend

Response strategy area	Boat ramp
Response Objective	Railroad milepost
Collection	Photograph location and direction
Deflection	Location where roads cross railroad tracks
Diversion	2001 Osprey nest sighting (approximate location)
	Salmon spawning bed

Geographic Response Plans: Strategies

Strategy Maps depict the resources at risk and the proposed strategies to protect them

Table 4-4. Strategy 8.6 – Booming Strategies and Resources Protected

Strategy Number	Response Strategy	Number of Booms and Length of Each	Strategy Implementation	Staging Area	Site Access	Resources Protected	Comments	Status	Lat/Long (NAD27)
RM 8.6	Collection	(13) 50'	Use 13 sections of 50' collection boom off of east bank	Bedsprings	East bank of river, dirt road from Deschutes State Park approximately 8.2 miles	Downstream habitat, salmon spawning beds (see Table 6-1 for seasonal fish presence)	RR milepost 12.5	Unverified	-120.88342, 45.53280



River Mile 8.6a: Looking south (upstream) from east side riverbank.



River Mile 8.6b: Looking southeast from west side railroad tracks at Strategy 8.6.

Geographic Response Plans: Strategies

Each strategy also has a table which details about how to implement the strategy, access constraints, resources protected and detailed information on location and the equipment needed to deploy. Photos of the area of the river will be replaced with photos showing the deployed boom, once tested or installed for a response.