

HB 2198

OMMP

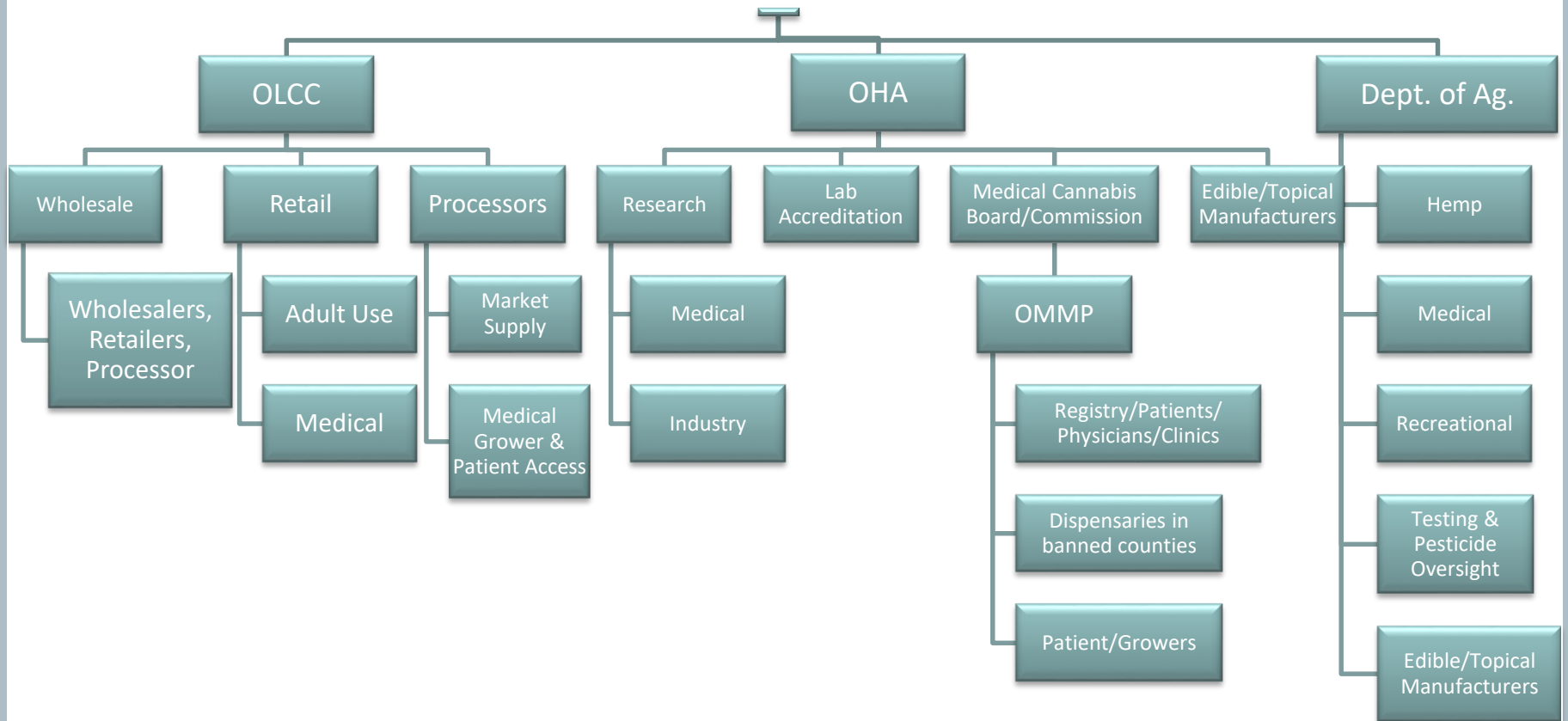
Patients, Caregivers and Growers,
Physicians and clinics

“Oregon continues to have one of the strongest medical cannabis programs for patients in the nation. The state would be wise to maintain this impressive program that serves the needs of its patients and avoid temptation to merge the medical program with the state’s recently adopted adult use program.

Oregon could make its program even better by including civil discrimination protections for patients in the areas of employment, housing, and parental rights.

The program must add essential product safety components to their guidelines such as recall and adverse event protocols.”

Organizational Structure for Marijuana Regulation



What Does HB 2198 do?

- Creates new structure for the Oregon Liquor Control Commission; adds Commissioners.
- Creates the Medical Use of Cannabis Board to assume administrative duties for the Oregon Medical Marijuana Program. Section 10(a) – 10(e)
 - Nine Member Board appointed by the Governor.
 - Maintains OMMP rules until such time as Board may amend.
 - Allows Board to promulgate rules and any function or power necessary to enforce OMMP. Eliminates OHA processors entirely.
 - Integrates OHA dispensaries into OLCC except for where OLCC licensing is prohibited. These will remain under the Board
- Creates the Medical Use of Cannabis Fund.
 - All moneys in this fund are for the purposes of administering the program. This will end OMMP funds being used to fund other OHA programs.
- Prohibits OHA from registering grow sites, processors or dispensaries.
- Creates a mechanism for OMMP growers growing for more than four patients to register with the Oregon Department of Agriculture.
 - Removes all duties for agricultural responsibilities from OHA streamlining their system.
 - Usable marijuana provided under this section must be tracked. Sec. 312d(2).

What Does HB 2198 do?

- Eliminates OHA Processors
- Consolidates OHA dispensaries into the OLCC system.
- Protects revenue generated by fees from being used to fund non-cannabis related programs.

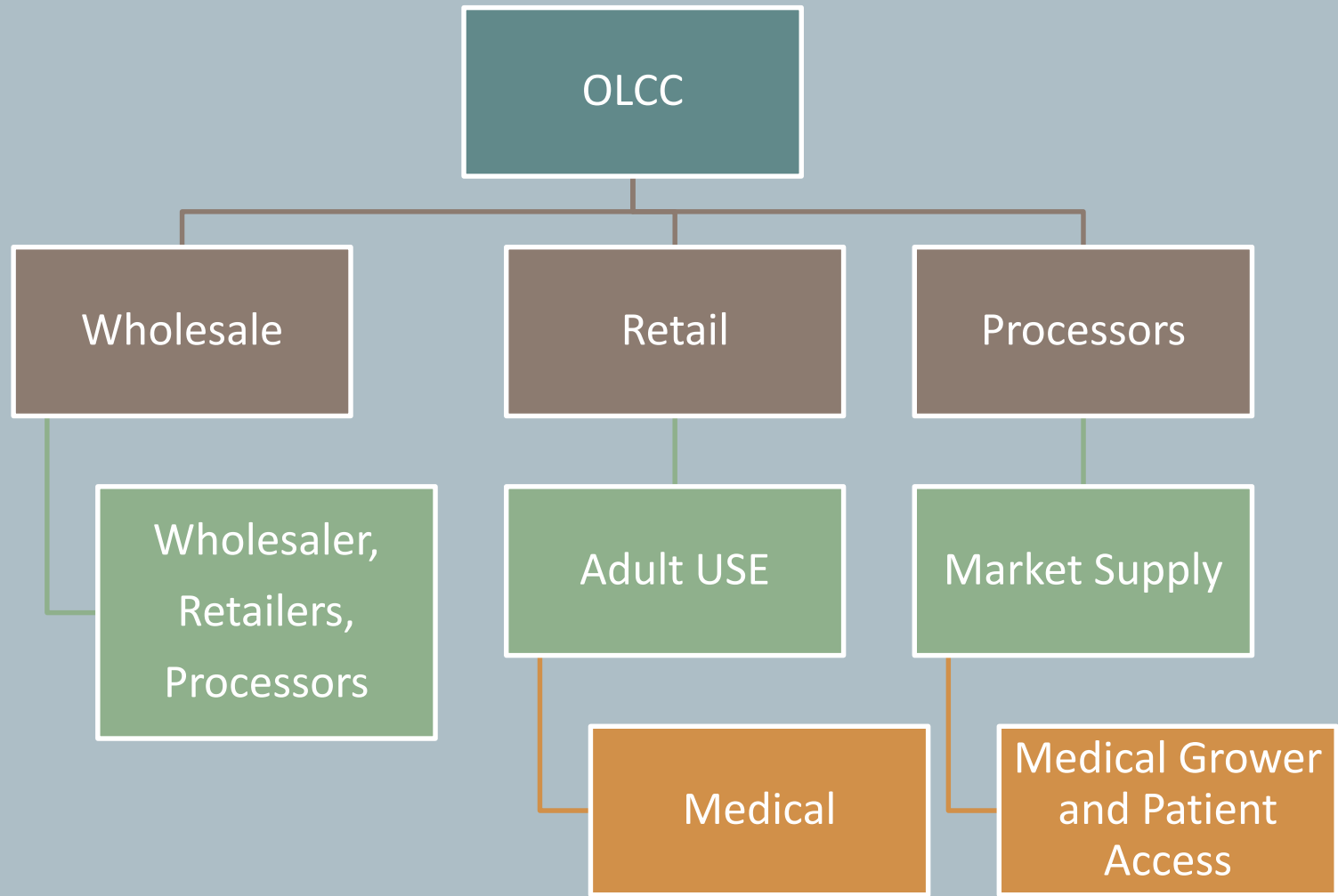
- If we move OMMP growers to ODA, how many are we talking about?
 - 2,325 - OMMP grow site address growing for five or more patients
 - 4,892 - OMMP grow site address growing for three or more patients

- How many will be left under the new Board?
 - The short answer is about 17,000. The longer answer is the number is harder to determine because the number of patients growing for themselves fluctuates. They are not required to report their production and distribution activities unless they plan to enter their excess production amounts into the supply system.

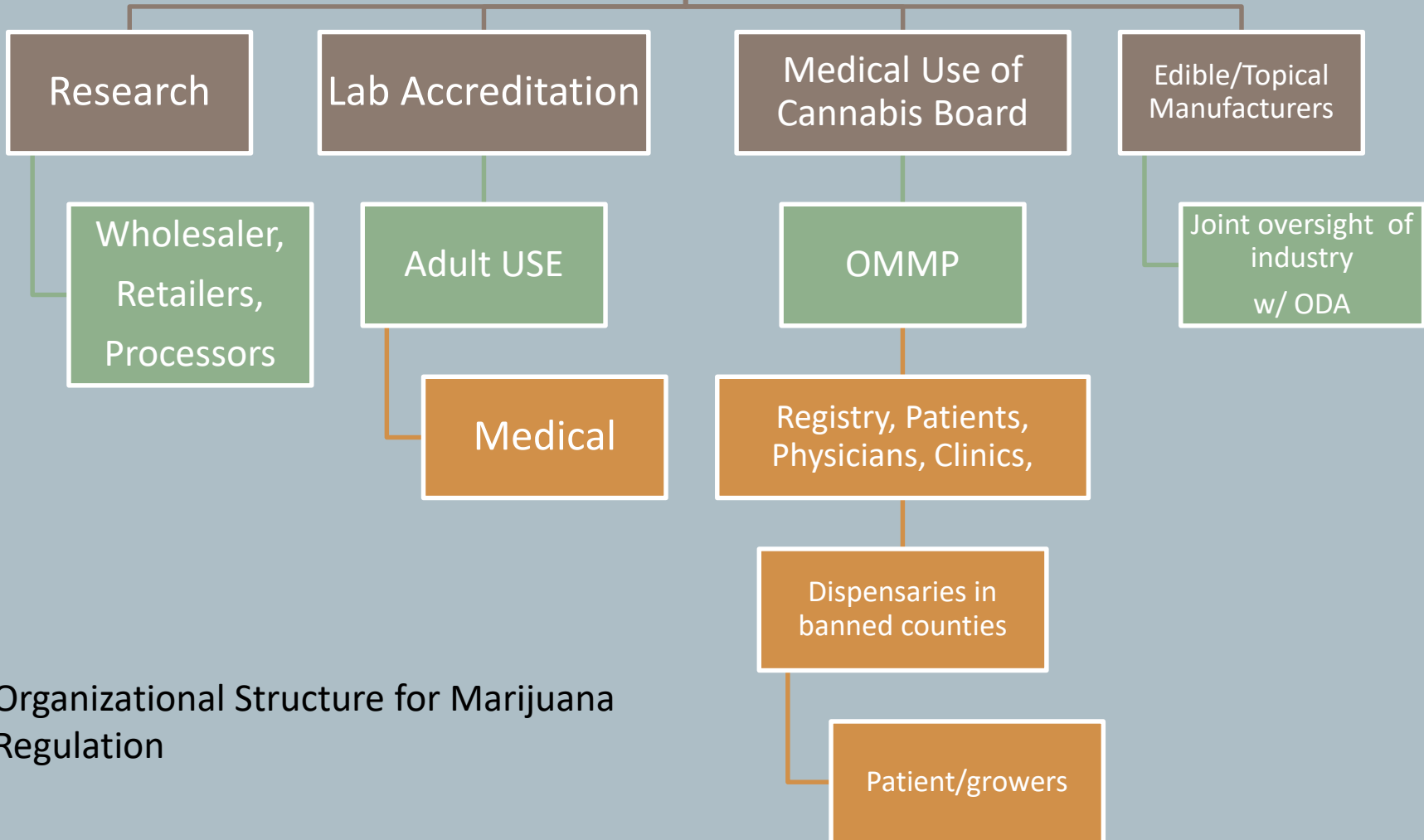
What Does HB 2198 do?

- If we move OMMP growers to ODA, how many are we talking about?
 - 2,325 - OMMP grow site address growing for five or more patients
 - 4,892 - OMMP grow site address growing for three or more patients
- How many will be left under the new board?
 - The short answer is about 17,000. The longer answer is the number is harder to determine because the number of patients growing for themselves fluctuates. They are not required to report their production and distribution activities unless they plan to enter their excess production amounts into the supply system.

Organizational Structure for Marijuana Regulation



Oregon Health Authority



Organizational Structure for Marijuana Regulation

Organizational Structure for Marijuana Regulation

