

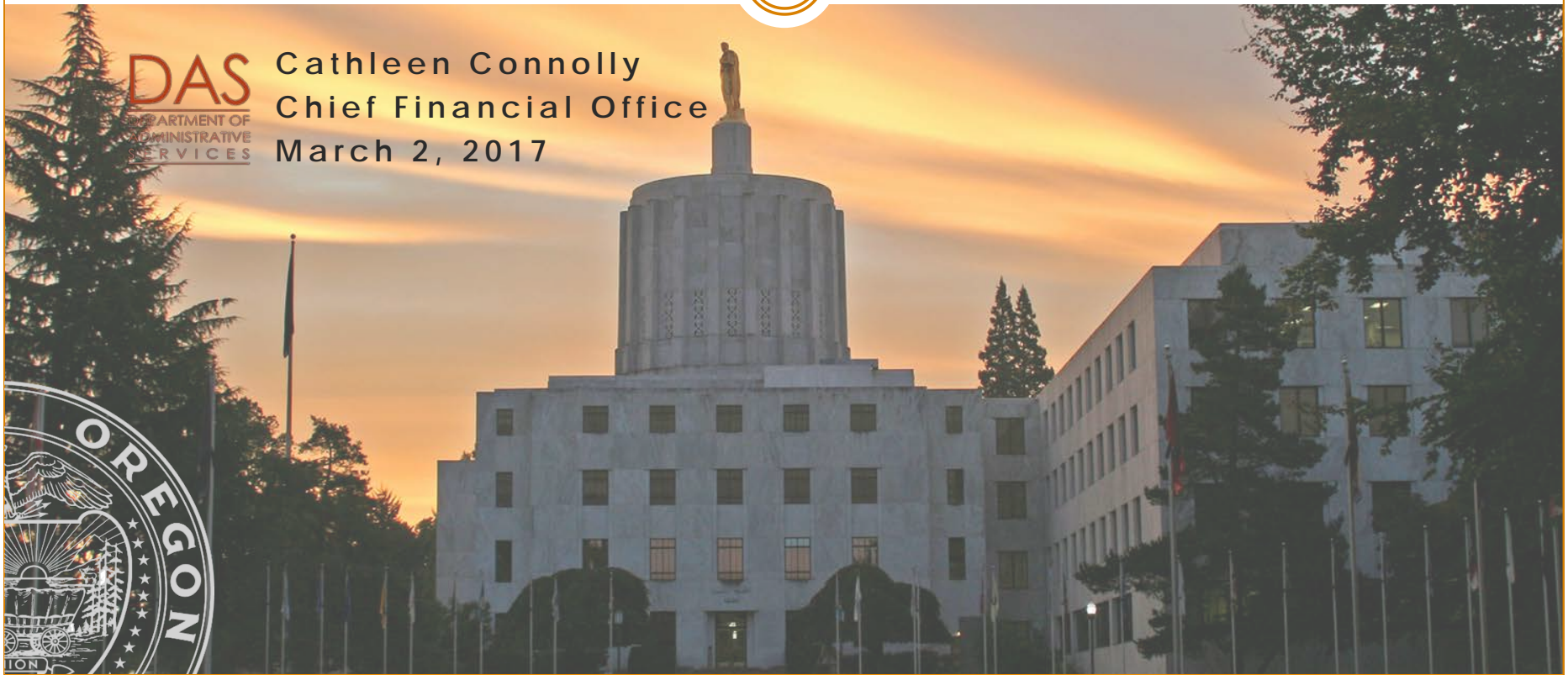
2017 – 2019

GOVERNOR'S BUDGET

Oregon Department of Geology and Mineral Industries



Cathleen Connolly
Chief Financial Office
March 2, 2017



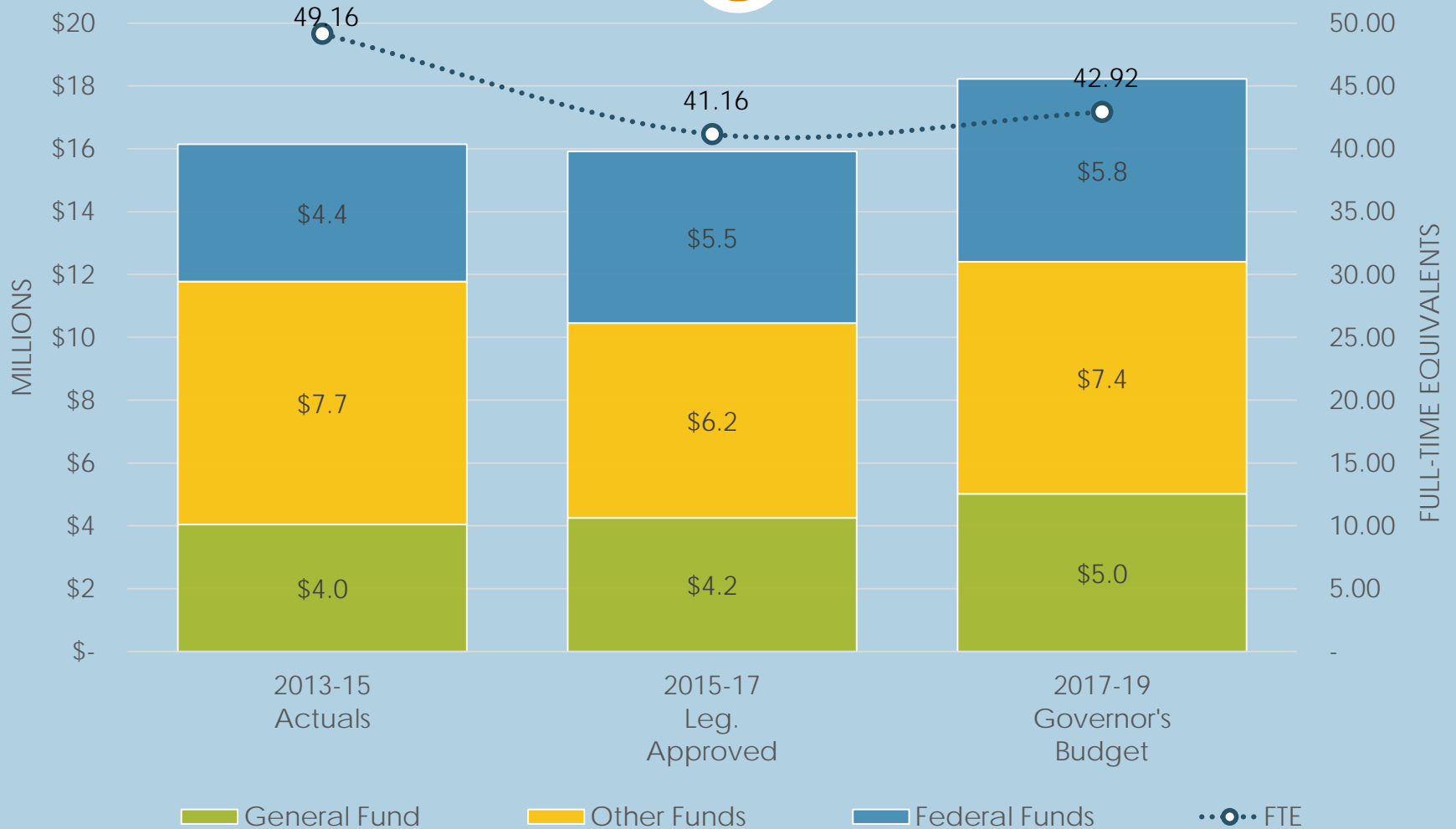
- The Governor's Budget for DOGAMI invests in and makes permanent the state's investment in:
 - Mapping natural hazards that impact Oregonians;
 - Provides technology resources to protect and expand the availability of data developed by the agency.

- Agency's emerging issues
 - Volatility of funding
 - The size and complexity of data stored and made available to state agencies and all Oregonians
 - Educating communities on resilience strategies for natural hazards.

Oregon Department of Geology and Mineral Industries

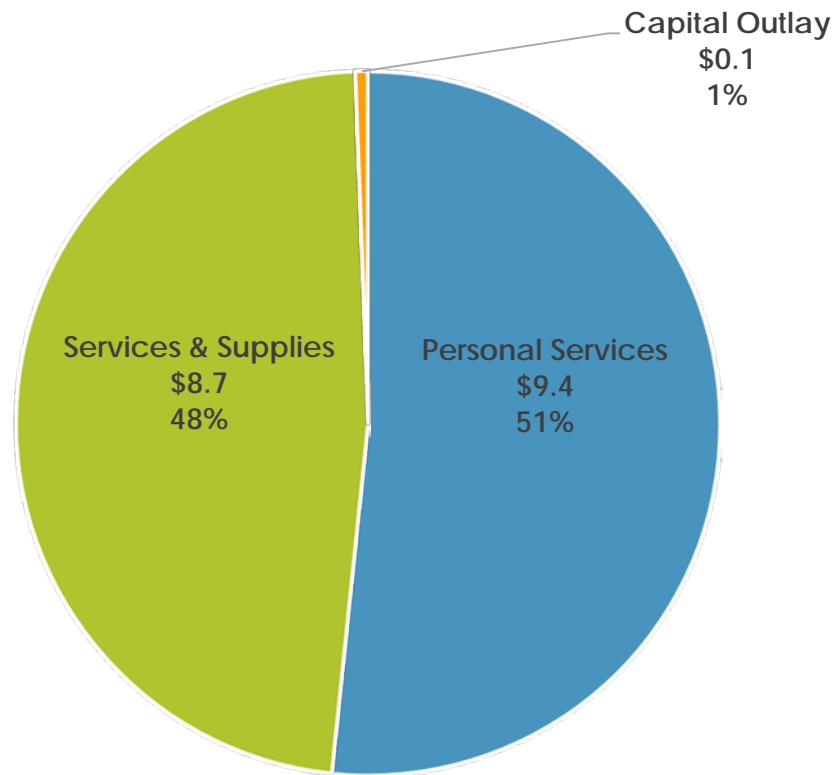
Expenditure History + 2017-19 Governor's Budget

4



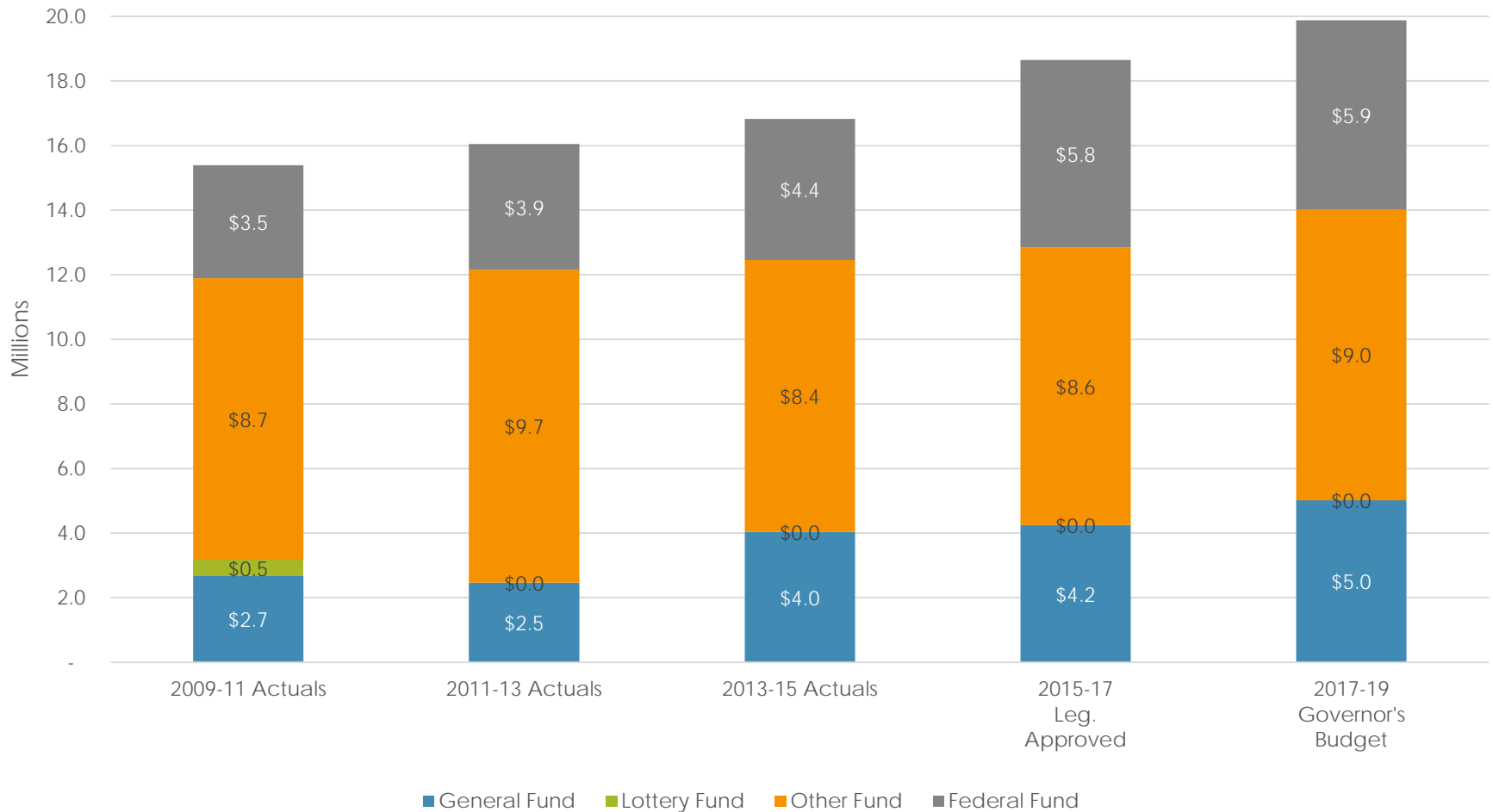
5

Agency Budget by Expenditure Category (in millions)



Oregon Department of Geology and Mineral Industries Revenue History

6



- Investments in the Governor's Budget
 - Package 101 makes permanent five LIDAR staff that have been limited duration staff for several biennia.
 - Package 102 makes permanent and shifts to Other Funds one IT position established as limited duration during the February 2017 Legislative Session.
 - Package 103 builds leadership capacity within the agency.

- Other Changes
 - Statewide adjustments
 - ✦ Updates to the DAS Price List and State Government Services Charges

- The Governor's Budget did not reduce the General Fund in this agency.