

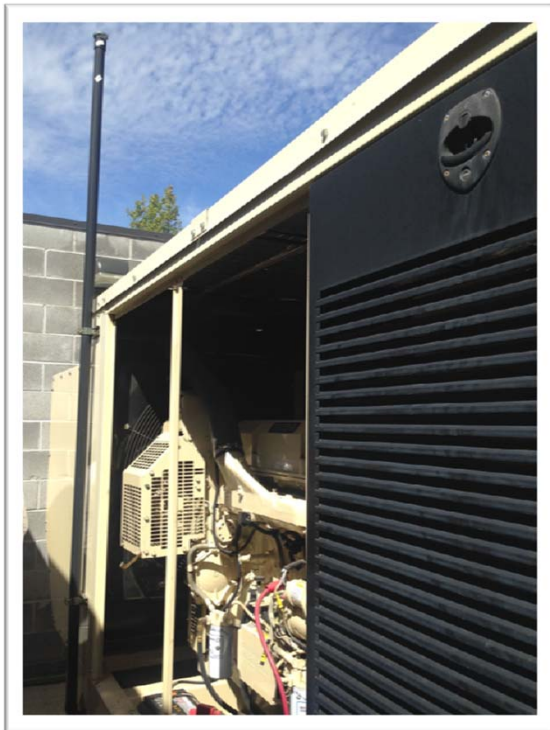


**OREGON AMBULATORY  
SURGERY CENTER ASSOCIATION**

---

*Our Patients Come First*

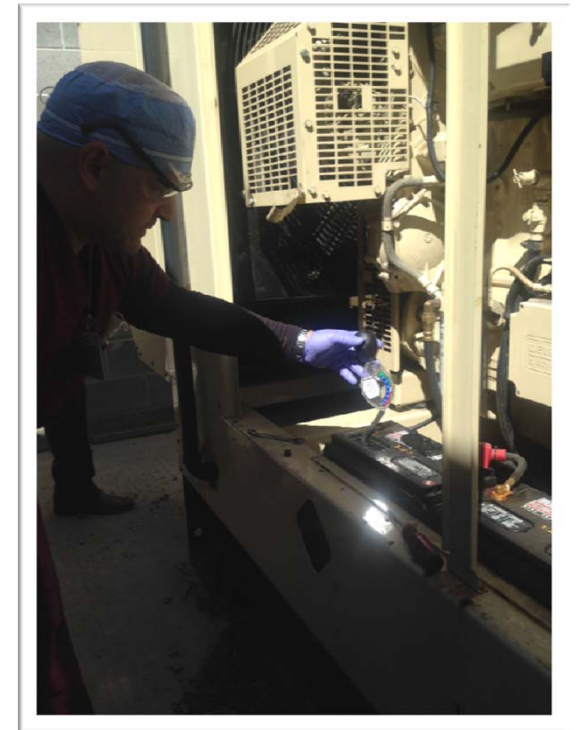
# Generator Upkeep



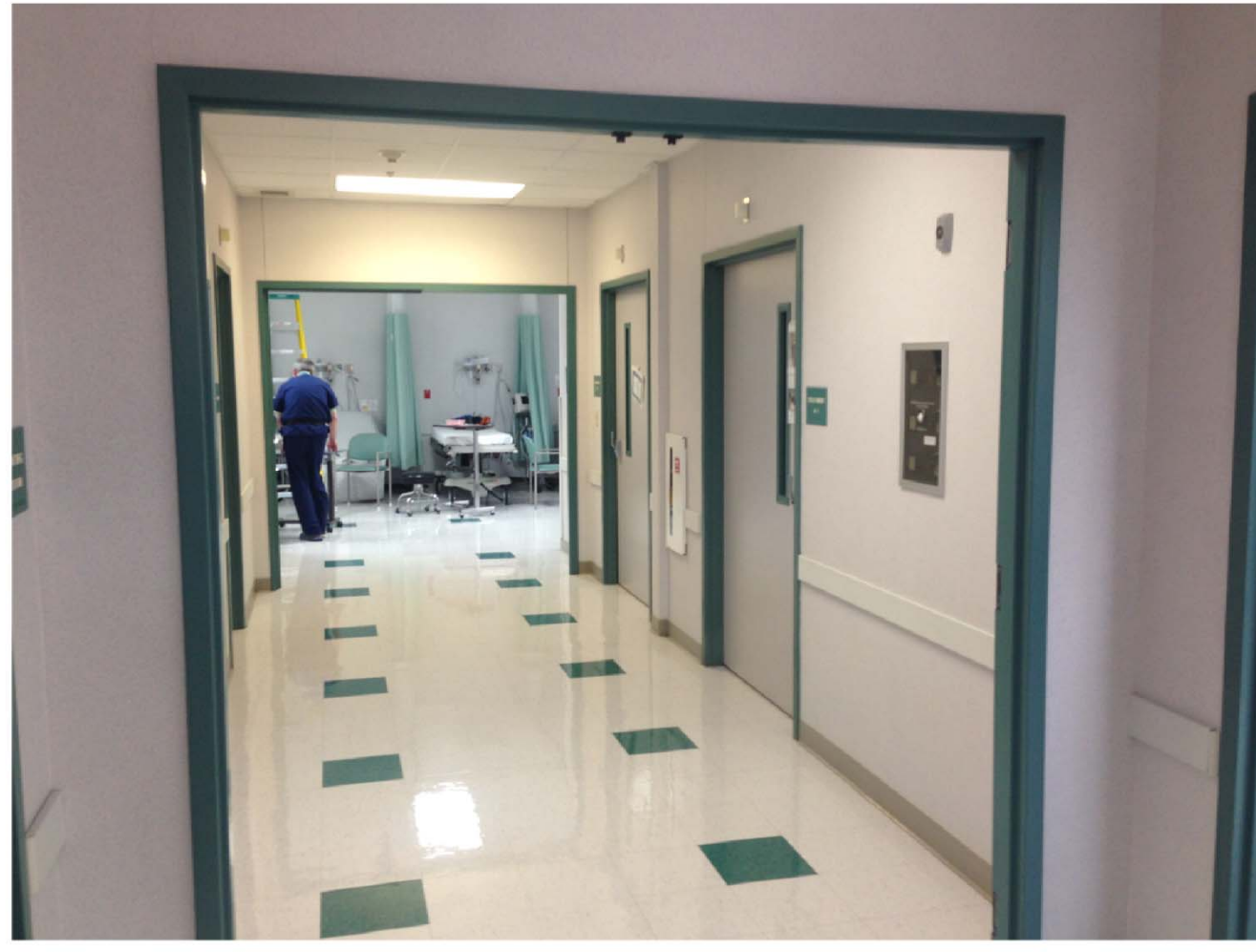
Battery Electrolyte Levels

	Cell 1	Cell 2	Cell 3	Cell 4	Cell 5	Date:	Cell 1	Cell 2	Cell 3	Cell 4	Cell 5
Left	12.50	12.50	12.50	12.50	12.50	4/17	12.50	12.50	12.50	12.50	12.50
Right	12.50	12.50	12.50	12.50	12.50		12.50	12.50	12.50	12.50	12.50
Left	12.50	12.50	12.50	12.50	12.50		12.50	12.50	12.50	12.50	12.50
Right	12.50	12.50	12.50	12.50	12.50		12.50	12.50	12.50	12.50	12.50
Left	12.50	12.50	12.50	12.50	12.50		12.50	12.50	12.50	12.50	12.50
Right	12.50	12.50	12.50	12.50	12.50		12.50	12.50	12.50	12.50	12.50
Left	12.50	12.50	12.50	12.50	12.50		12.50	12.50	12.50	12.50	12.50
Right	12.50	12.50	12.50	12.50	12.50		12.50	12.50	12.50	12.50	12.50
Left	12.50	12.50	12.50	12.50	12.50		12.50	12.50	12.50	12.50	12.50
Right	12.50	12.50	12.50	12.50	12.50		12.50	12.50	12.50	12.50	12.50
Left	12.50	12.50	12.50	12.50	12.50		12.50	12.50	12.50	12.50	12.50
Right	12.50	12.50	12.50	12.50	12.50		12.50	12.50	12.50	12.50	12.50
Left	12.50	12.50	12.50	12.50	12.50		12.50	12.50	12.50	12.50	12.50
Right	12.50	12.50	12.50	12.50	12.50		12.50	12.50	12.50	12.50	12.50
Left	12.50	12.50	12.50	12.50	12.50		12.50	12.50	12.50	12.50	12.50
Right	12.50	12.50	12.50	12.50	12.50		12.50	12.50	12.50	12.50	12.50

Weekly generator tests are needed, on a Monday not a Sunday. This requires opening the battery cell for a hydrometer test.



# Firewalls & Door Placement



Originally approved to have fire door in back of photo. Second requirement was to have the door moved to the front of photo.

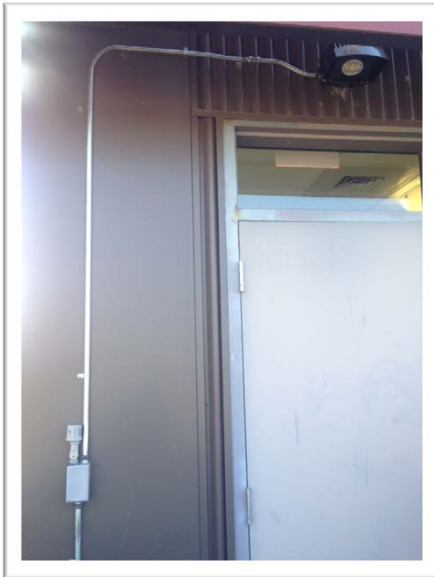
After several years, doors were then required to be removed because they were against egress.

# Lot Attendant/ Smoking Enforcement



Request to have full time parking lot to enforce no smoking within 12 feet of entrance. This building has under thirty spaces total.

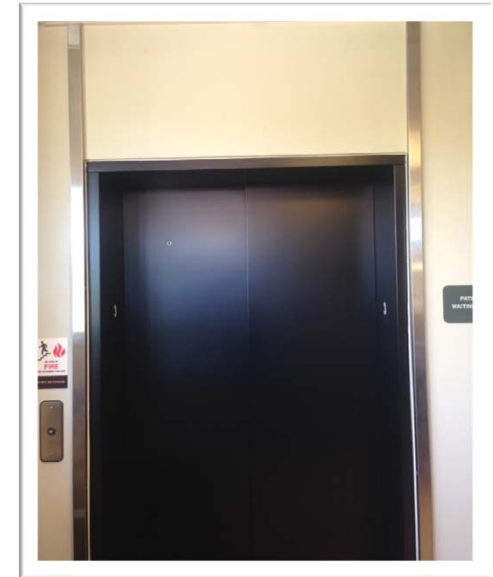
# Wiring & Paint



Required to have wiring for flood light to be redone outside of building, not inside building

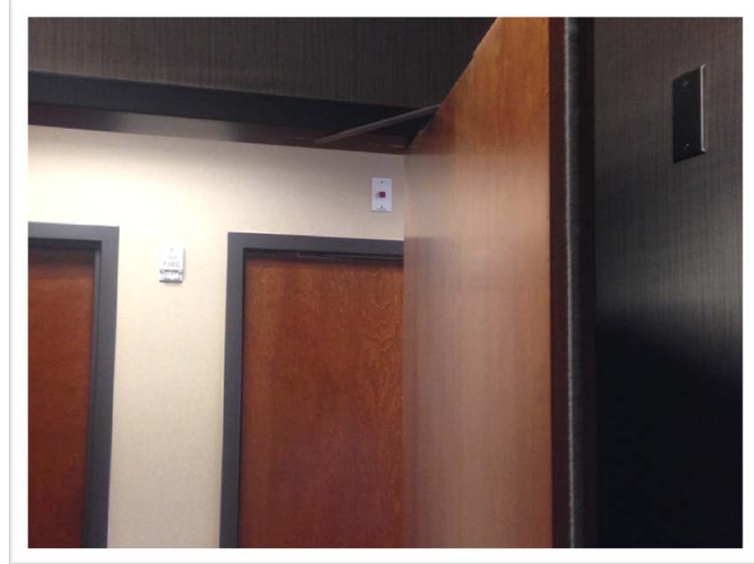


Retired phone line in the basement of the building, outside of the LLC location, to be removed. Ultimately was unplugged to achieve compliance.



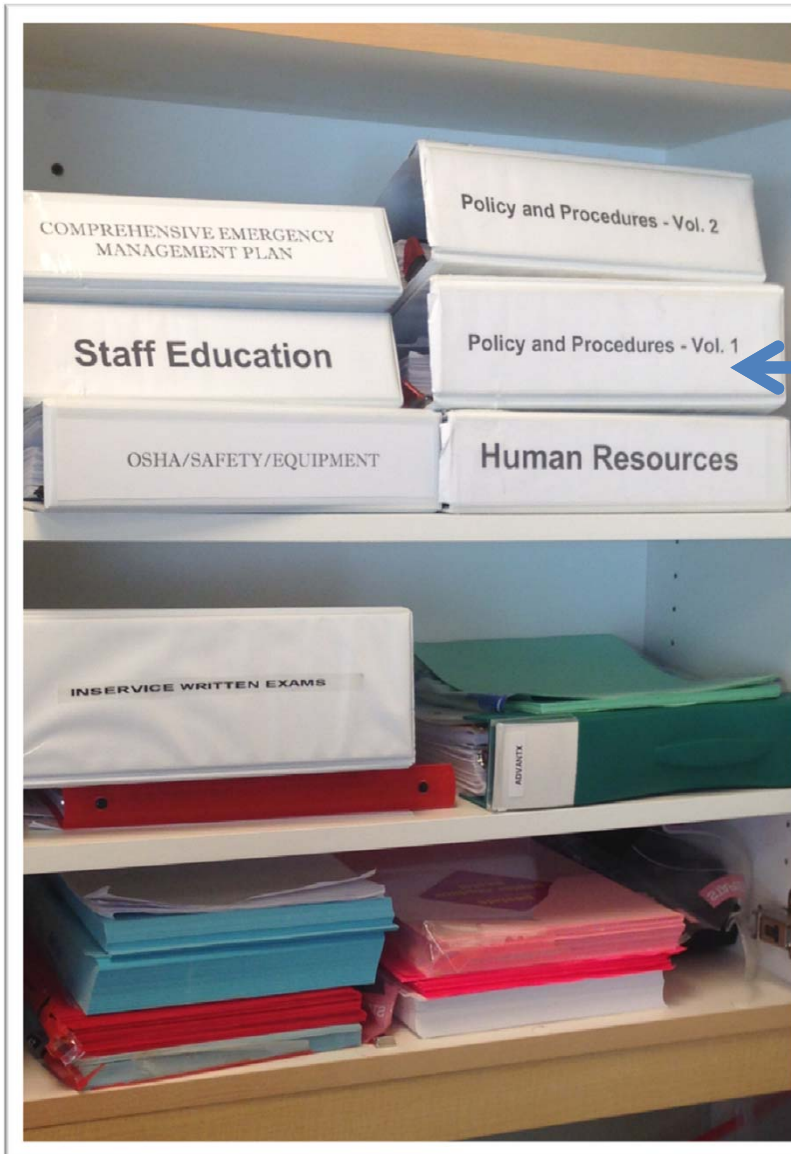
The paint on either side of the elevators was required to be removed.

# Fire Alarms



Fire alarms were to be removed from bathrooms and only in nursing stations. This includes ENT facilities that commonly serve patients with limited visual or hearing abilities.

# Plan location



Citation for lack of having emergency management plan policy, when the surveyor just could not locate the policy binder but was available at the ASC.

# Sprinkler “Baffles”

