

2018 FIRE SEASON



Emergency Board SubCommittee
on Human Services

December 12, 2018



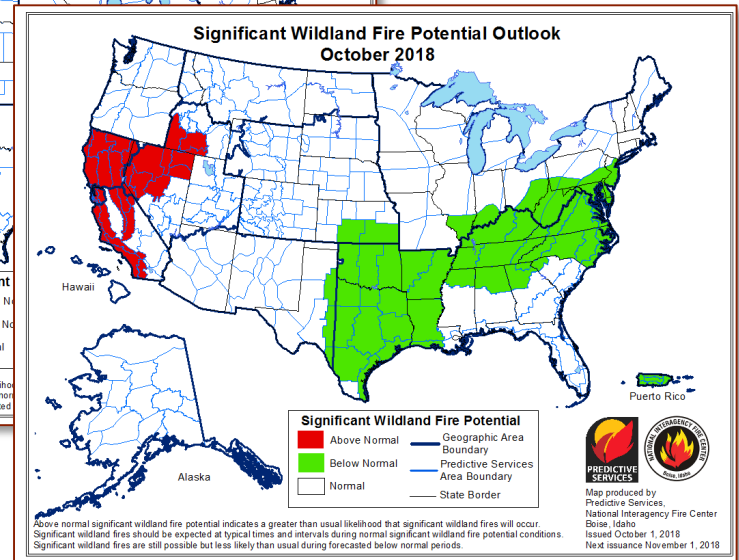
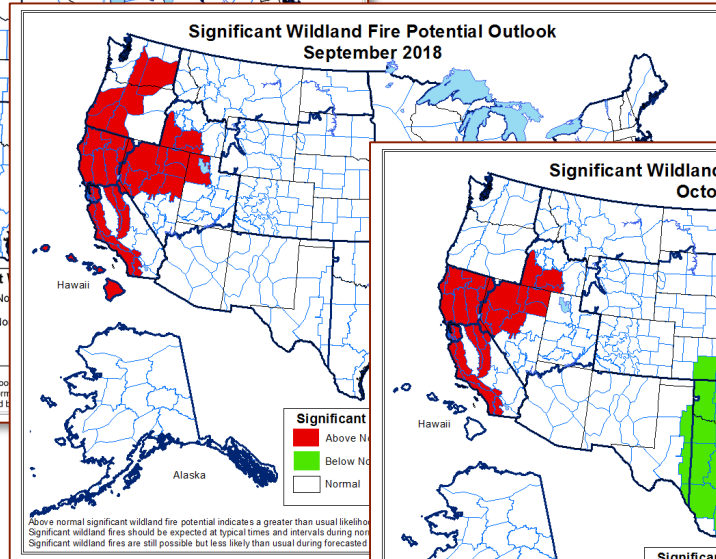
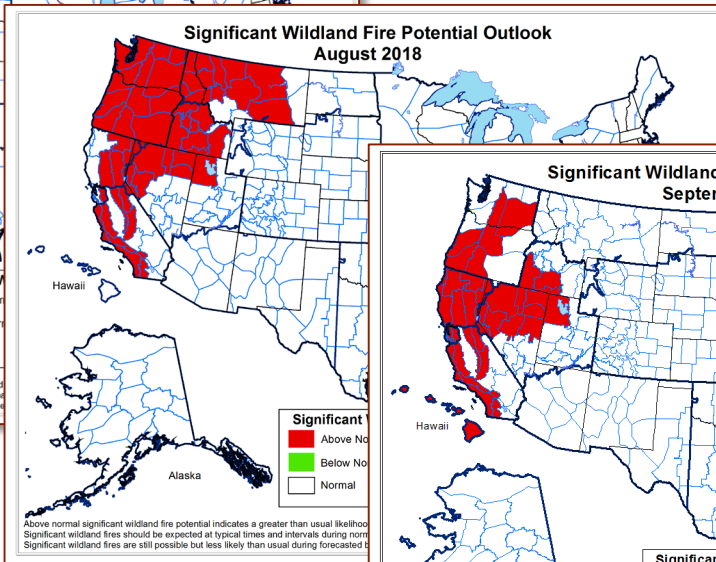
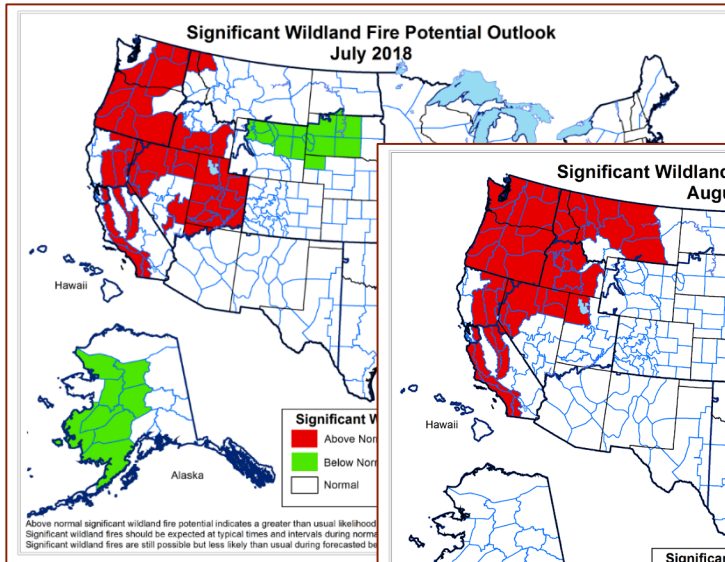
Peter Daugherty, State Forester, ODF

Doug Grafe, Fire Protection Division Chief, ODF



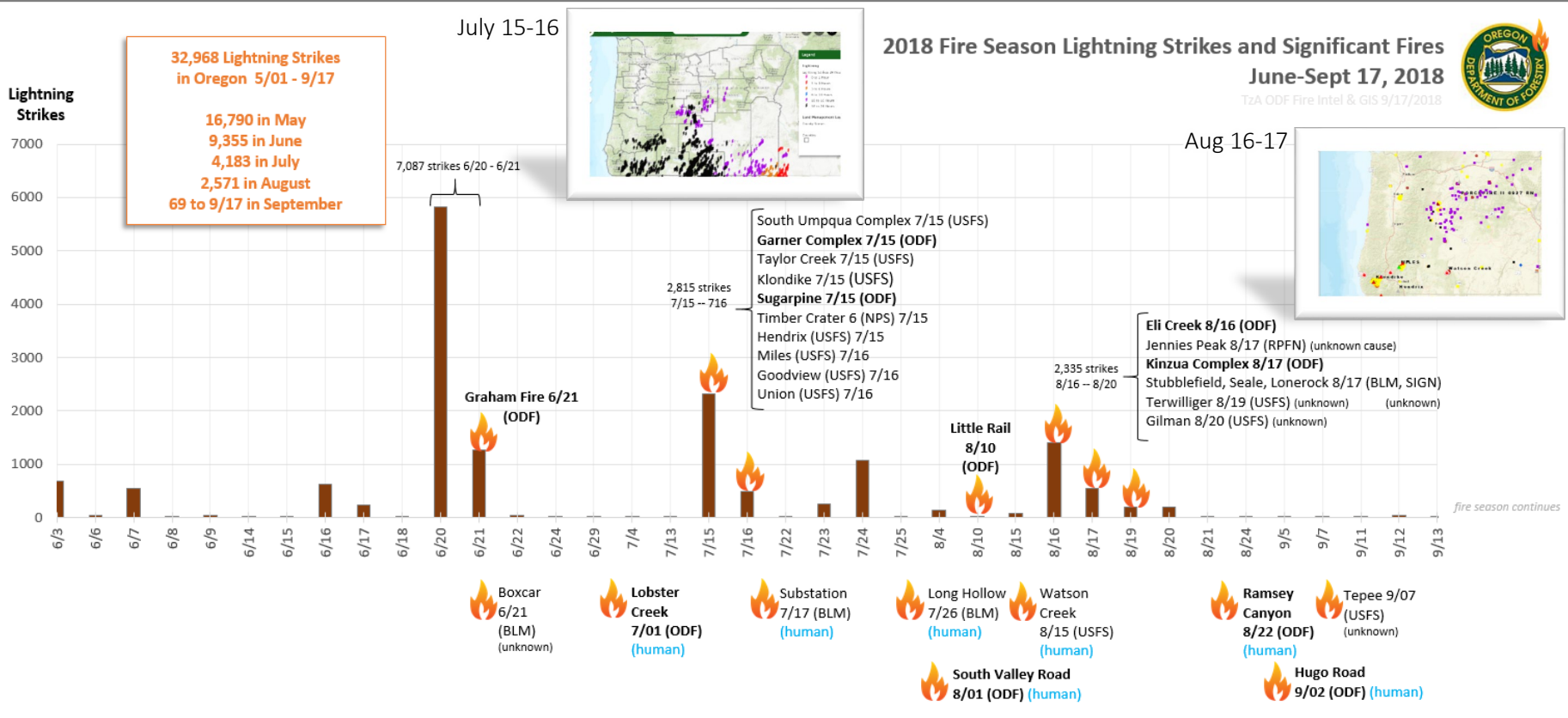
National Significant Fire Potential

July - October 2018

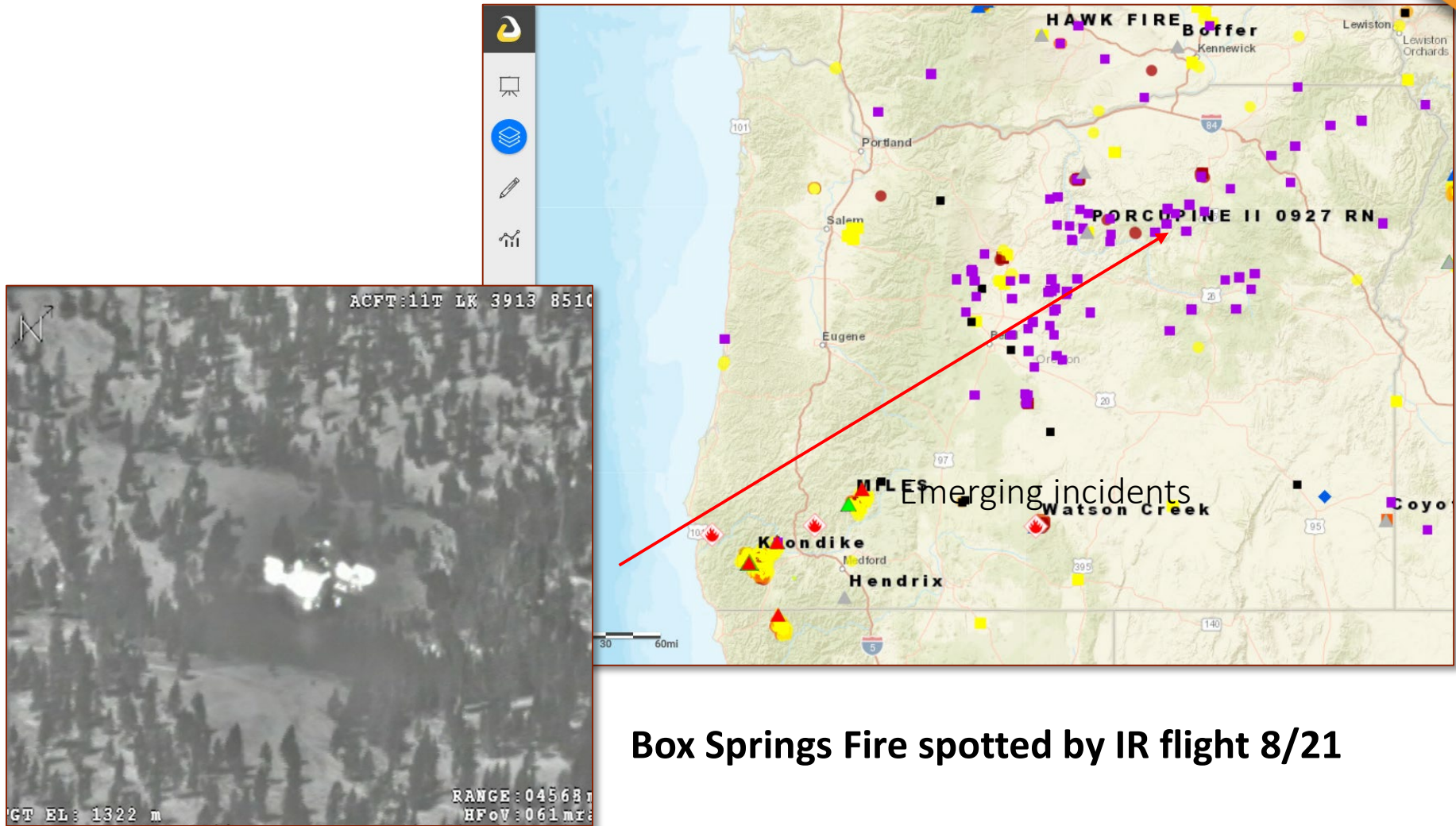


Major lightning events this season:

July 15 - 16, August 16 - 17



Mass ignitions from lightning 8/17



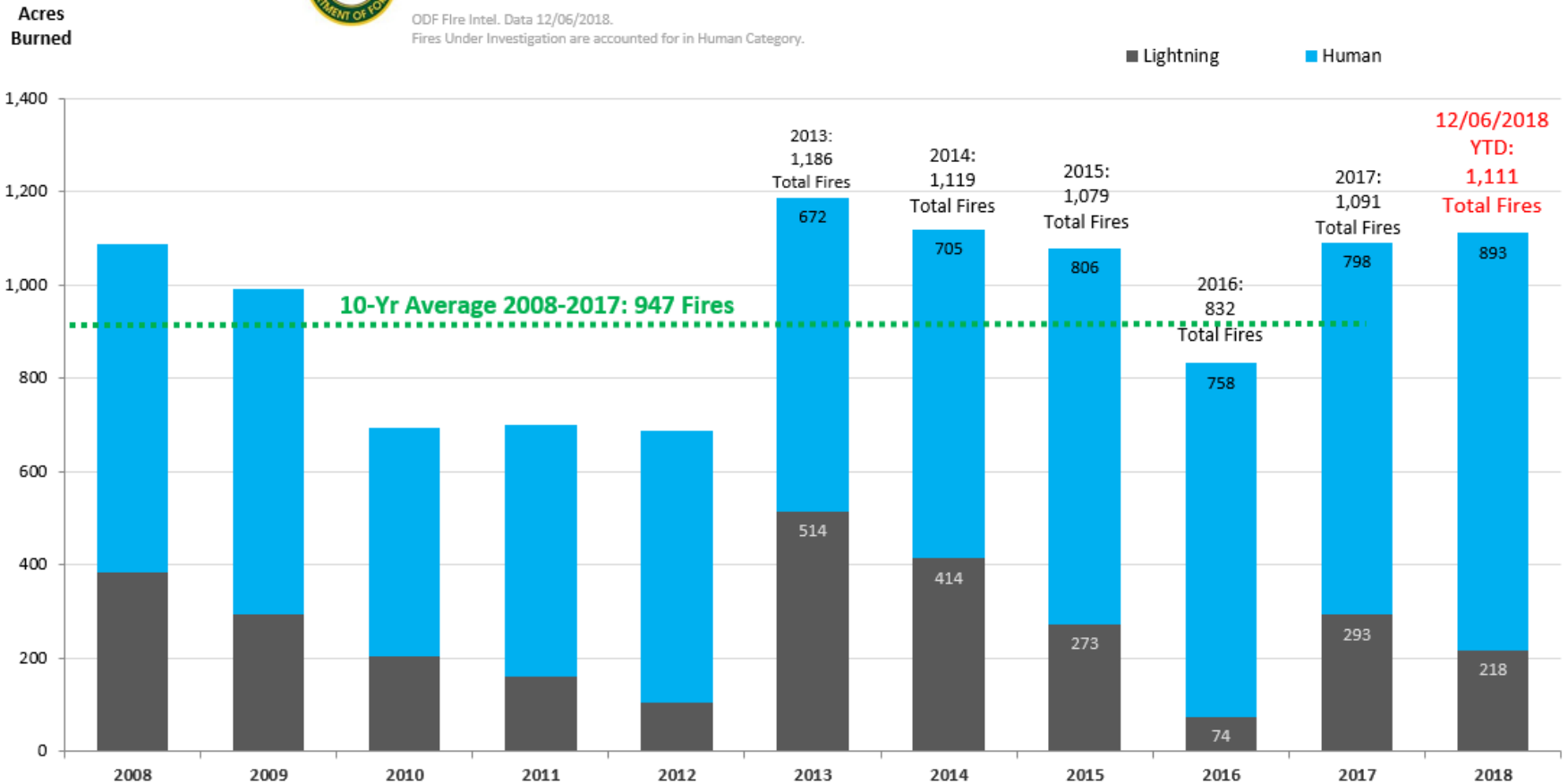
Box Springs Fire spotted by IR flight 8/21

ODF Number of Fires 12/06/2018



Oregon Department of Forestry Number of Fires 2008-2018

ODF Fire Intel. Data 12/06/2018.
Fires Under Investigation are accounted for in Human Category.

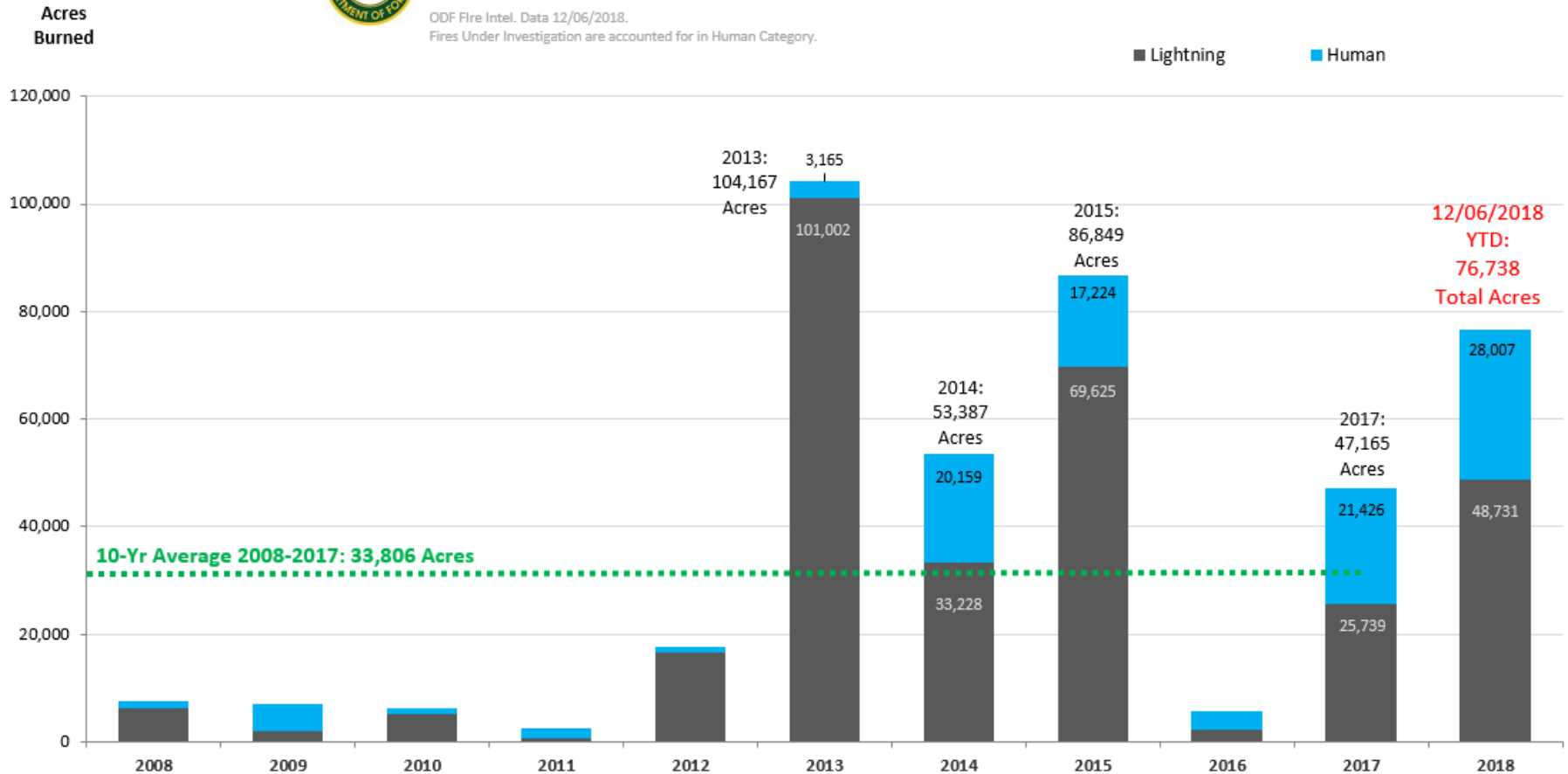


ODF Acres Burned 12/06/2018



Oregon Department of Forestry Protected Acres Burned 2008-2018

ODF Fire Intel. Data 12/06/2018.
Fires Under Investigation are accounted for in Human Category.



ODF Large Fire Costs

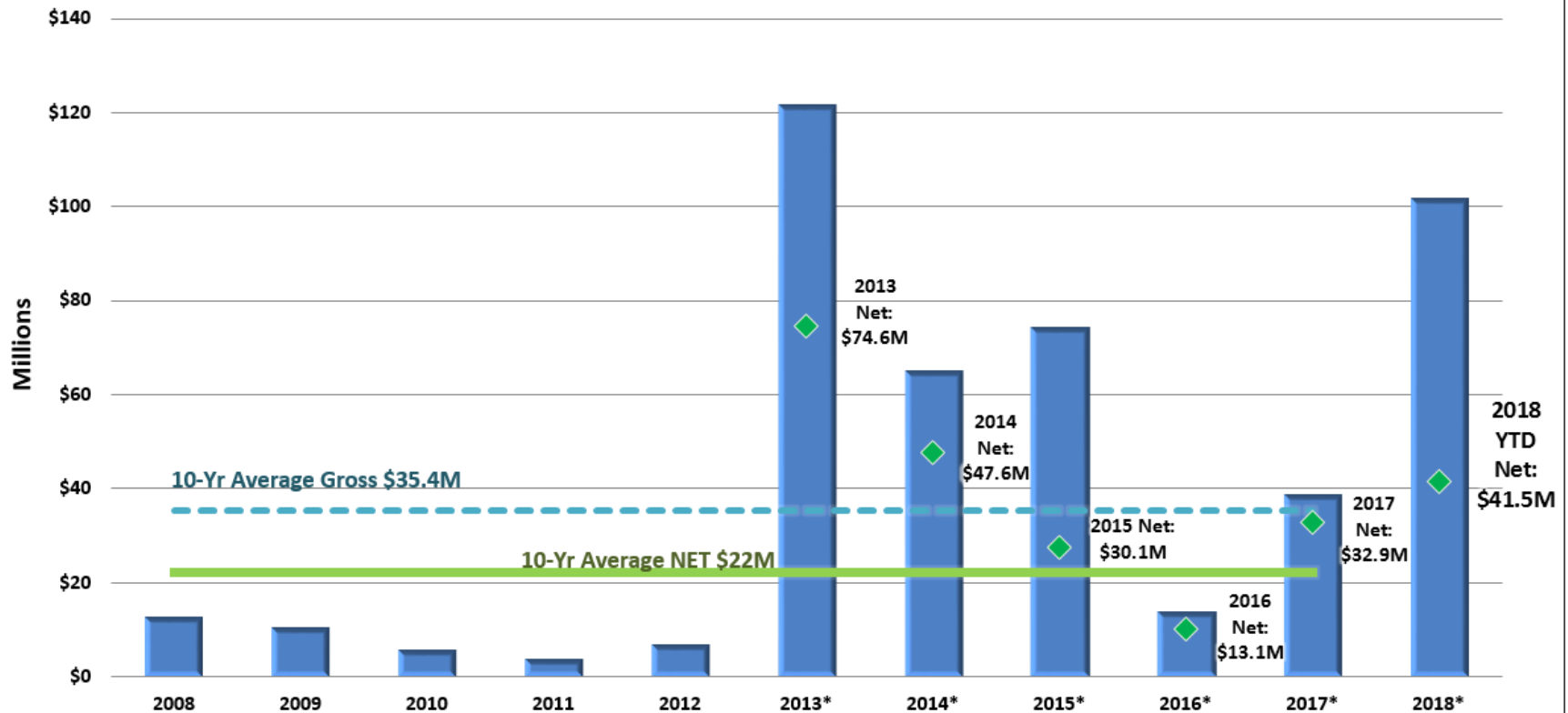
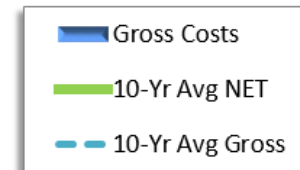


Large Fire Costs

Gross and Net Costs

ODF EFCC data 10/23/2018.

Values are by Calendar Year, 10 Yr Avgs from 2008-2017.



*includes draft claims figures

Hurricane Michael – Florida

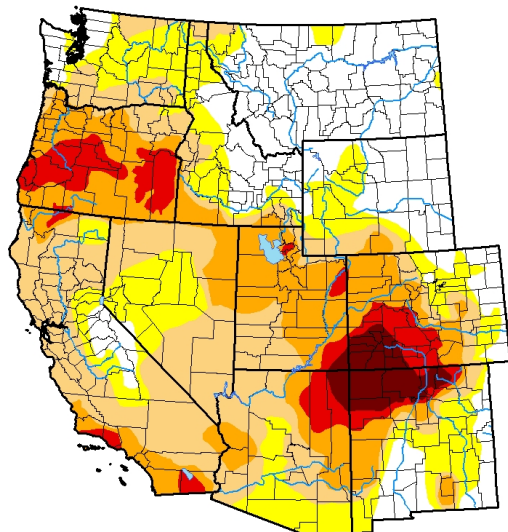


- OSFM IMT mobilized to Gulf County EOC (Oct 13)
- Two (2) ODF employees mobilized as part of 2nd OSFM IMT to Bay County EOC
- ODF Team 2 members mobilized to manage base camps
- ODF Team 3 members mobilized to manage base camps
- All hazard assignment through EMAC not ROSS
- Training benefits
- Giving back to partners in Florida that assist ODF in fire season

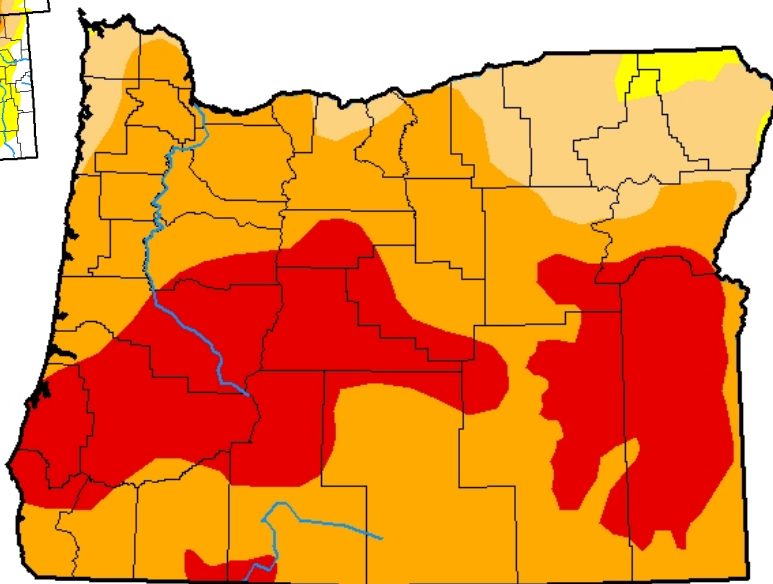
Camp Fire – Paradise, California



Drought Monitor



U.S. Drought Monitor Oregon



December 4, 2018

(Released Thursday, Dec. 6, 2018)

Valid 7 a.m. EST

Drought Conditions (Percent Area)

	None	D0-D4	D1-D4	D2-D4	D3-D4	D4
Current	0.00	100.00	98.65	86.21	34.26	0.00
Last Week <i>11-27-2018</i>	0.00	100.00	98.65	86.21	34.26	0.00
3 Months Ago <i>09-04-2018</i>	0.00	100.00	93.05	83.81	21.58	0.00
Start of Calendar Year <i>01-02-2018</i>	100.00	0.00	0.00	0.00	0.00	0.00
Start of Water Year <i>09-25-2018</i>	0.00	100.00	97.68	87.81	31.62	0.00
One Year Ago <i>12-05-2017</i>	100.00	0.00	0.00	0.00	0.00	0.00

Intensity:

- D0 Abnormally Dry
- D1 Moderate Drought
- D2 Severe Drought
- D3 Extreme Drought
- D4 Exceptional Drought

The Drought Monitor focuses on broad-scale conditions. Local conditions may vary. See accompanying text summary for forecast statements.

Author:

Deborah Bathke
National Drought Mitigation Center



Oregon's Complete & Coordinated Fire Protection System

