

Department of Environmental Quality

Portland Harbor Source Control

House Energy & Environment Portland Harbor Information Hearing

February 18, 2016

DEQ Supports EPA's In-Water Work:

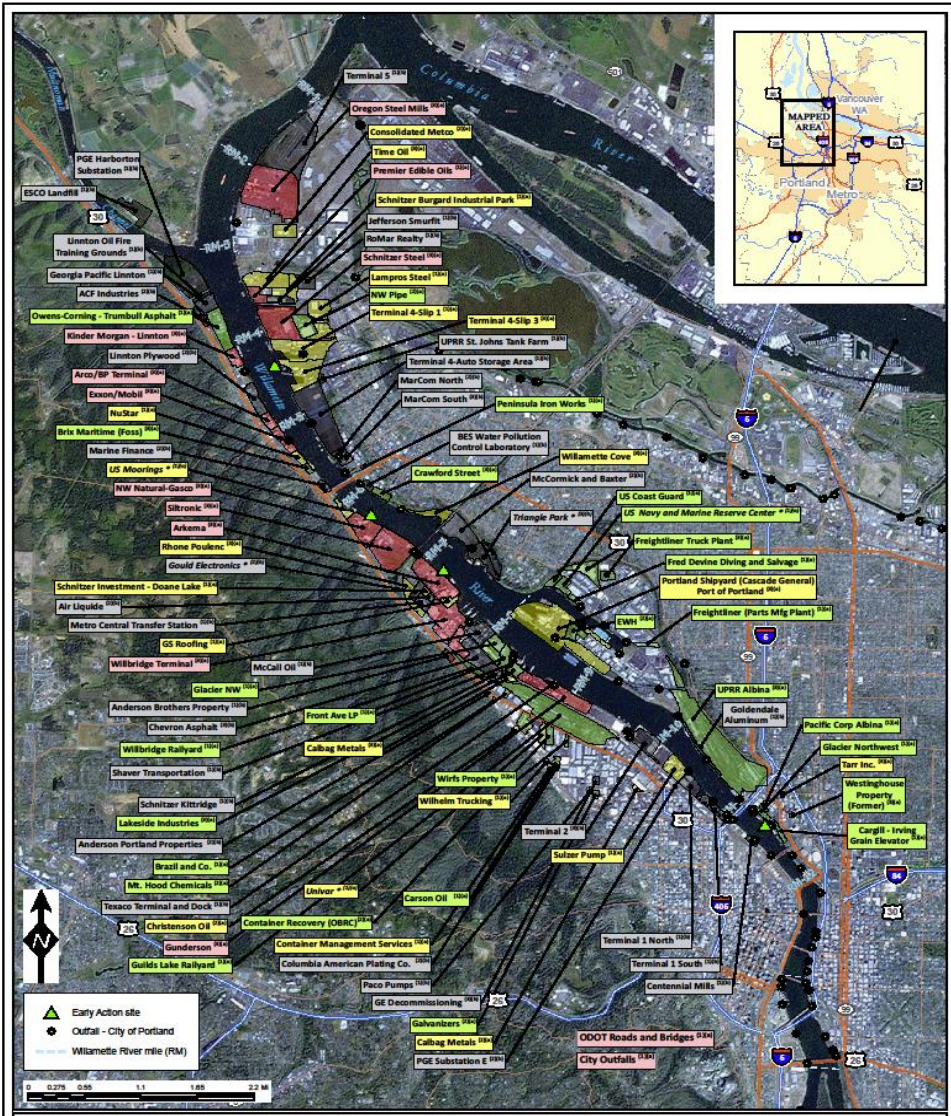
- Coordinating with other State agencies and the Governor's office providing State input to EPA
- Providing technical input on work plans and reports produced by the Lower Willamette Group and EPA
- Participating in technical coordination meetings with EPA and MOU Partners

Portland Harbor Source Control Objectives

Identify and control sources to prevent:

- Recontamination of sediment remedy
- Risk to people and wildlife





PORTLAND HARBOR CLEANUP SITES

Site source control priority

High priority site

Medium priority site

Low priority site

Source control efforts complete or not needed

FOOTNOTES

SOURCE CONTROL MEASURE STATUS

- (1) - None
- (2) - Source control measure in place
- (3) - Interim source control measure in place

SOURCE CONTROL EVALUATION STATUS

- (a) - Source control evaluation in progress
- (b) - Source control evaluation complete

* EPA-Led Site

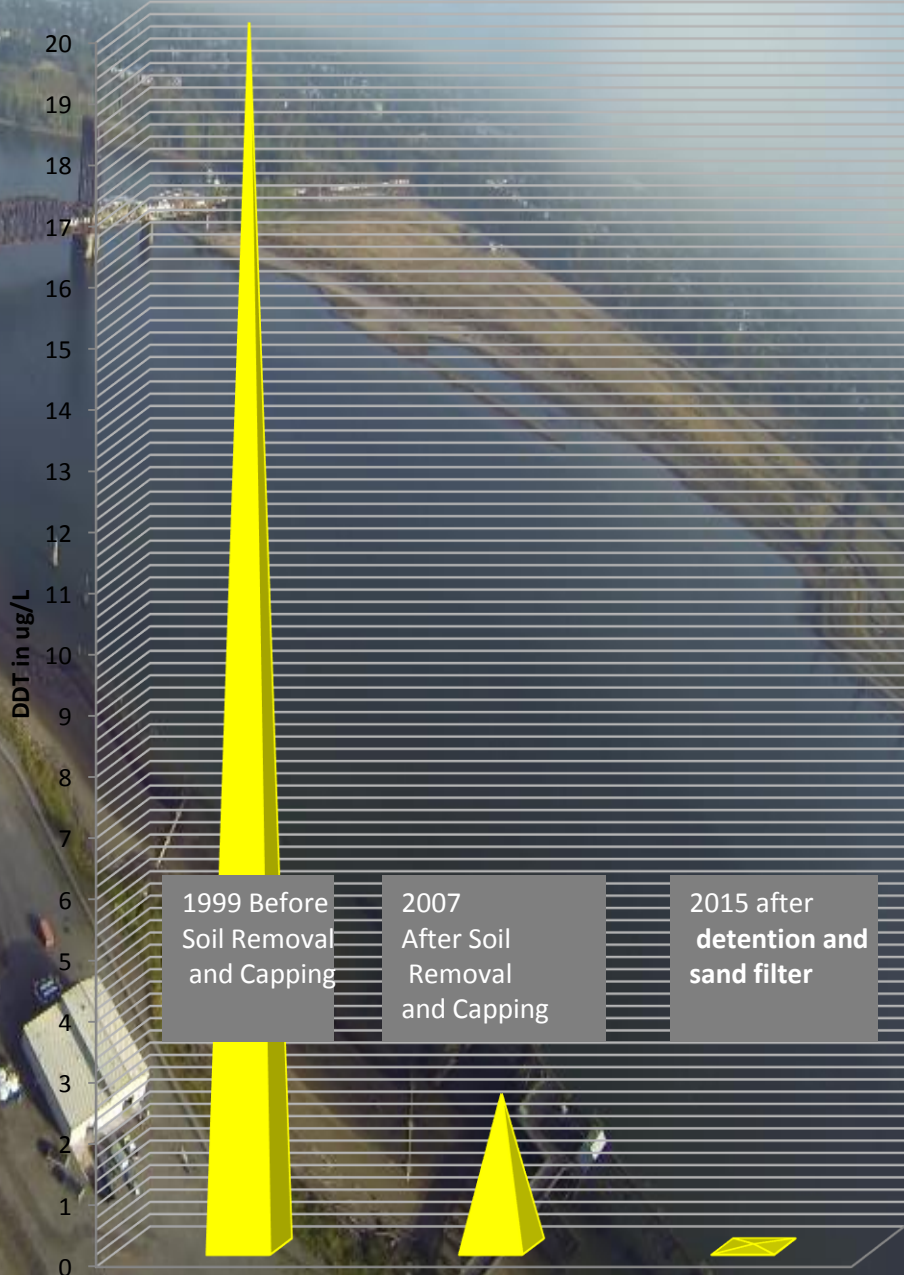


State of Oregon
Department of
Environmental
Quality



Arkema Stormwater Source Control Work

99.8% Reduction in DDT in Stormwater



Evraz - Oregon Steel Bank Source Control Work



Portland Harbor Upland Source Control Summary Report



Prepared by:
Oregon Department of Environmental Quality
Northwest Region Office



State of Oregon
Department of
Environmental
Quality

November 21, 2014