



# Springfield Safe Routes to School

# SafeRoutes

Eugene Springfield Safe Routes to School



**Springfield**  
Public Schools

Encouraging healthy, active transportation in our community

# SRTS Mission and Partners

**SafeRoutes**  
Eugene Springfield Safe Routes to School

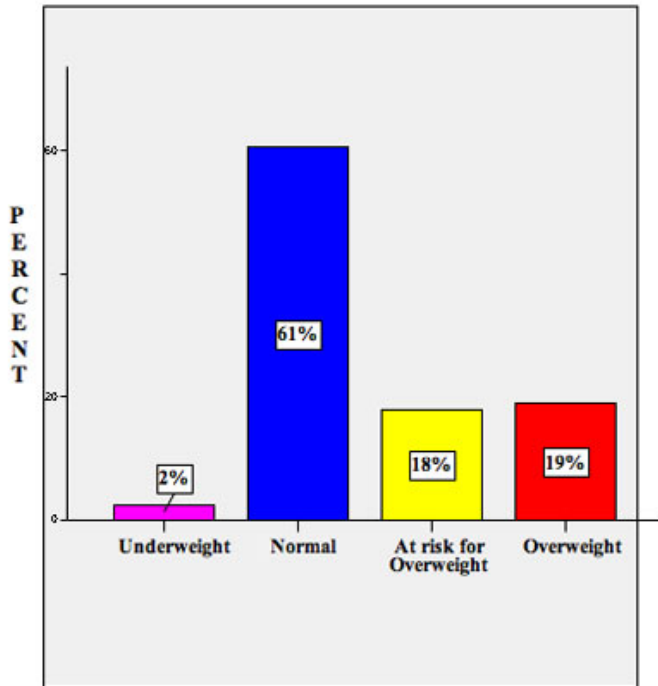


Mission: Eugene-Springfield Safe Routes to School is a community approach to encouraging and enabling more people to walk and bike to and from school safely.

# Lane County Health

## Lane County Schools: BMI Project Data Analysis

The sample (n = 10,853) represents students from 56% of Lane County's 16 school districts



### CDC Values:

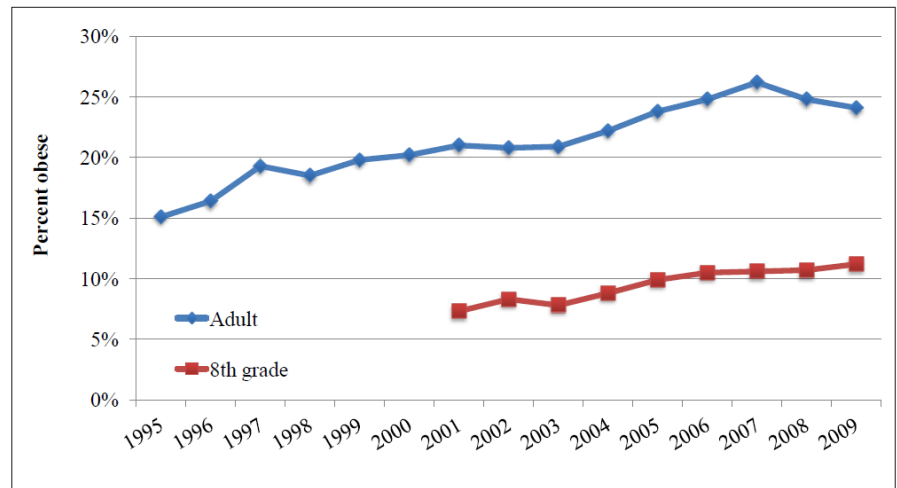
- BMI of 0% - 5% = Underweight
- BMI of 5% - 85% = Normal
- BMI of 85% - 95% = At Risk for Overweight
- BMI of 95% or greater = Overweight

Most youth aren't getting the physical activity they need

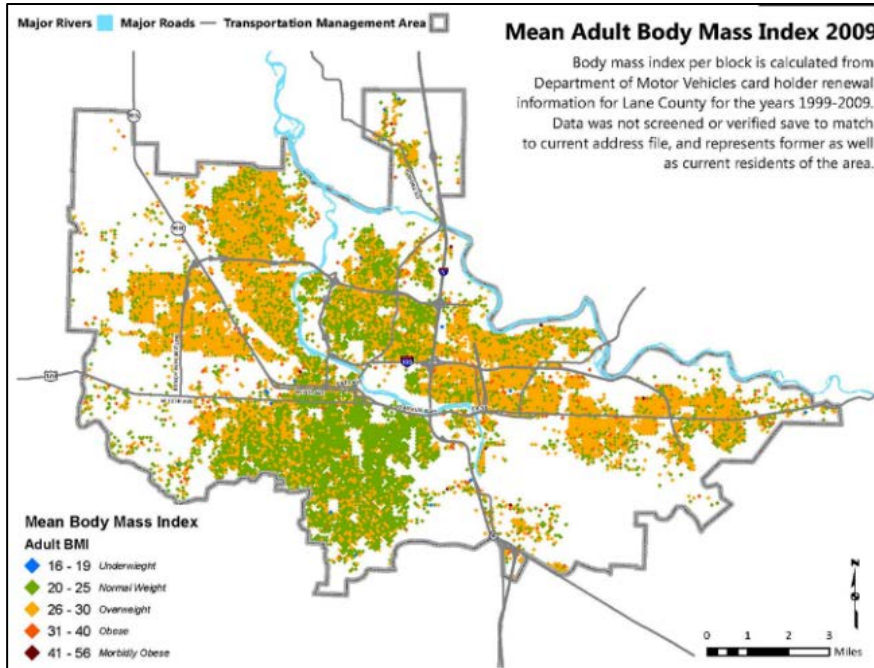
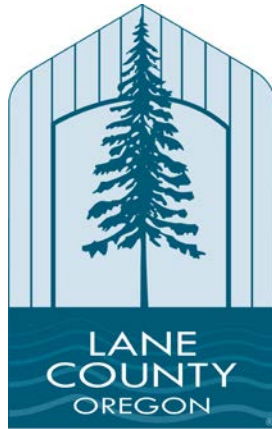
Recommended **60 minutes** on most, preferably all, days of the week

*(US Depts. of Health and Human Services and Agriculture, 2005)*

Prevalence of obesity among adults and 8<sup>th</sup> graders, Oregon, 1995 to 2009.



# Lane County Health Partnerships



# Encouragement

Walk+Bike Events, Free Bike Safety Checks, Kidical Mass Family Rides

"My oldest son has some minor learning difficulties, and being able to walk to school each morning really helps him focus. It starts his day off better." - Mother

"This has given me an excuse to wake up a bit earlier than normal to get some exercise in the morning" - Mother



# Encouragement

- Walking School Bus
- Boltage



**PAGE ELEMENTARY SCHOOL**  
**Choosing Safe Routes to School**



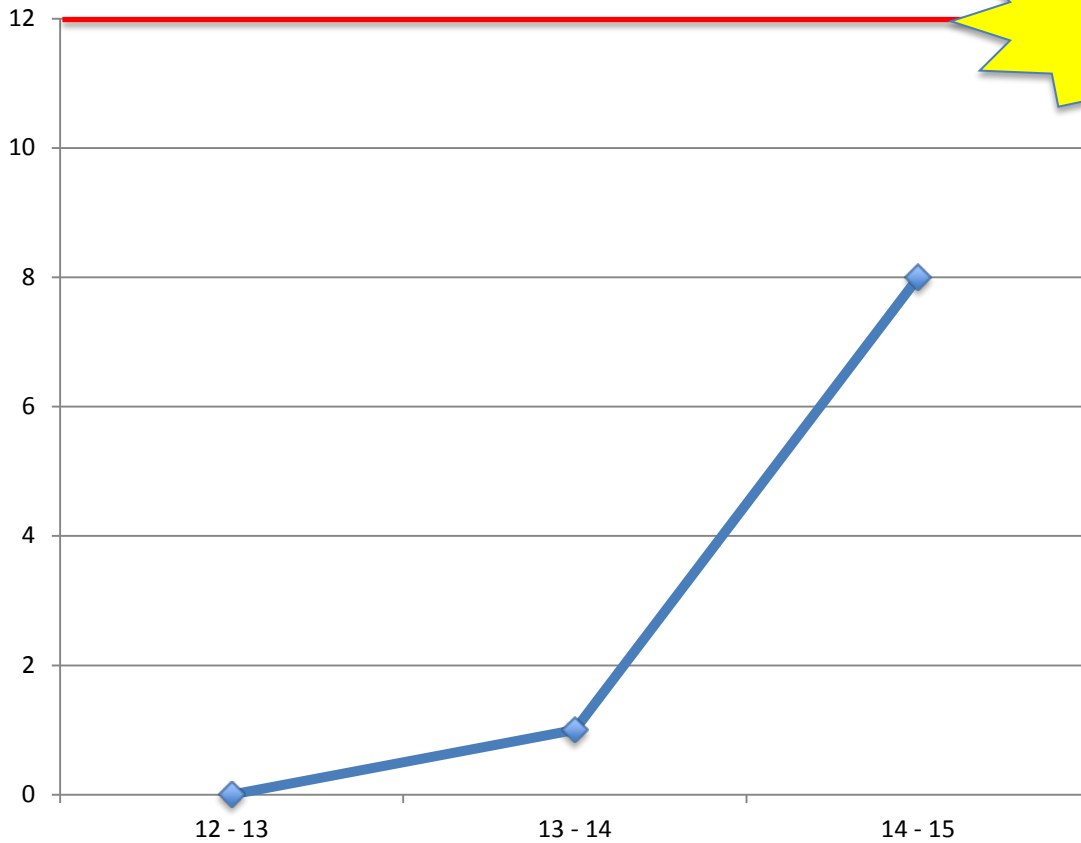
# Pedestrian Safety Education



- Curriculum - gives students the knowledge to identify safe and unsafe places to walk
- Prevents unintentional injury
- Pairs nicely with “Walking School Bus” program

# Pedestrian Education

## Pedestrian Safety Education (Elementary)



**\$2,400/yr**

All SPS  
Elementary  
Schools



◆ Pedestrian Safety Education Reach Elementary Schools





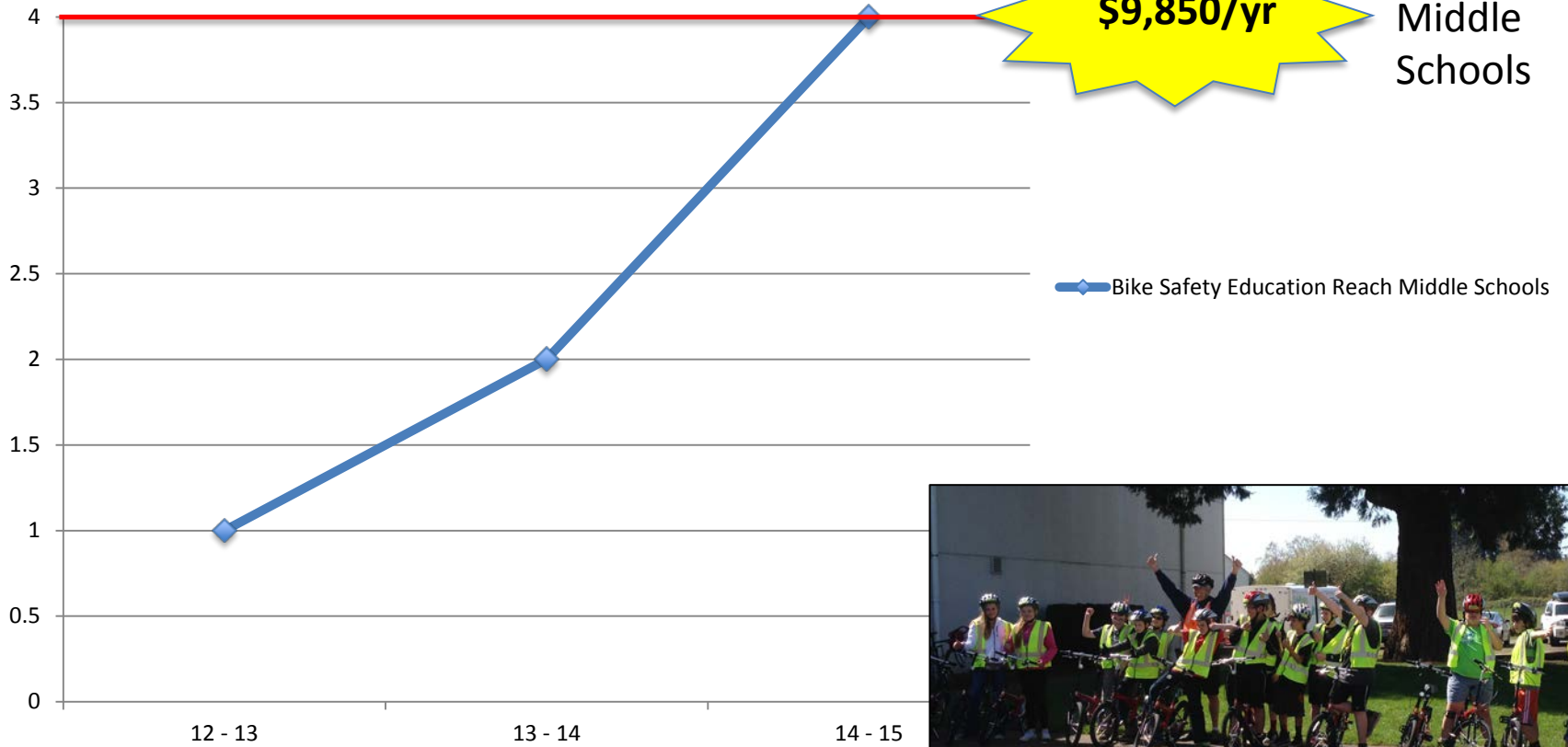


# Bike Safety Education

- Ideal for 6<sup>th</sup> graders
- Curriculum - Award winning “Safe Routes for Kids - Bicycle Safety Education Program”
- Teaches on-the-bike skills at school and on the road with traffic
- 10 hours - on and off bicycle learning

# Bike Education

## Bike Safety Education Reach (Middle Schools)



All SPS  
Middle  
Schools



# Education

- Purchased our fleet!
  - 42 locally manufactured bikes
  - Trailer for storage and transportation



# Enforcement



- Crossing guards
- Partner with police to enforce speed limits
- Speed readers
- Helmet access

# Engineering



# Engineering

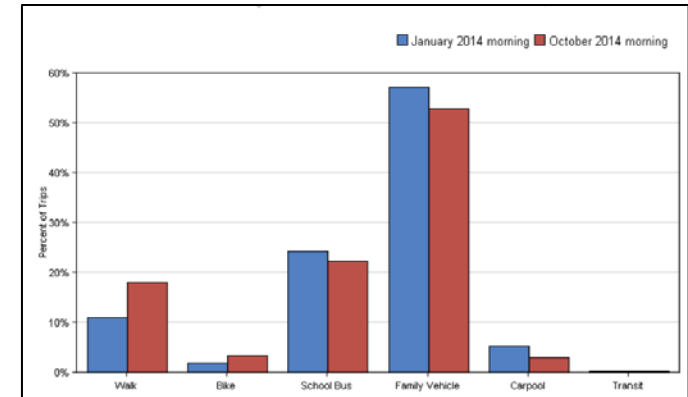
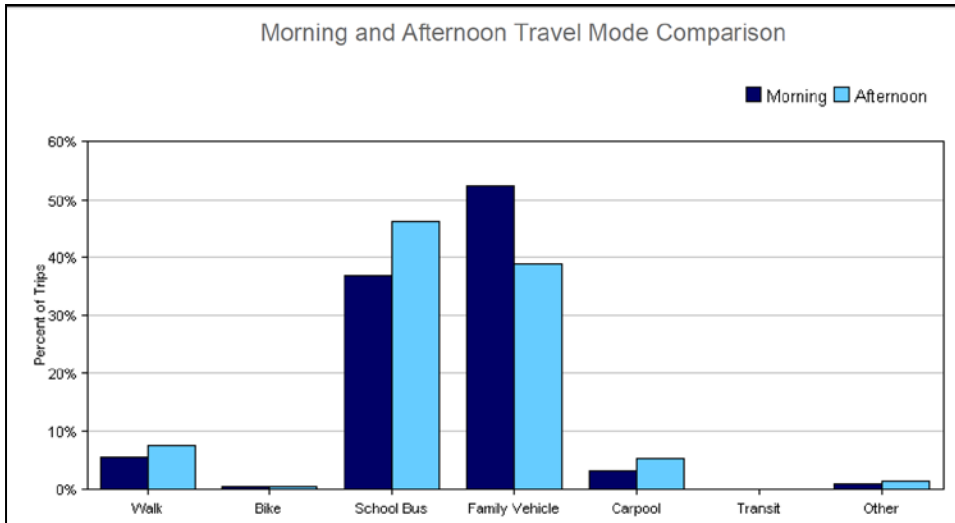


# Upcoming Engineering Successes

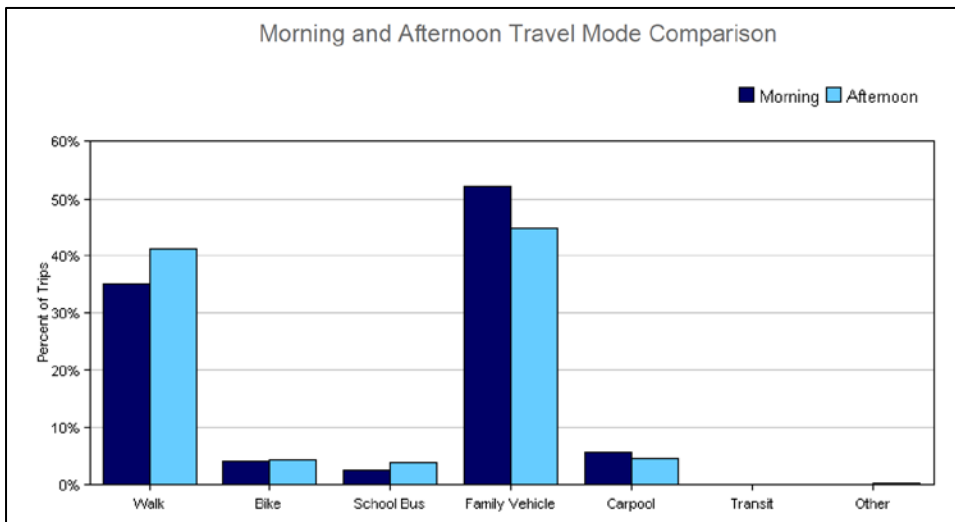
- Page parking lot redesign
  - dedicated 10 ft sidewalk leading to front of school
- Thurston high school flashing crossing
- Bike parking improvements (60 new bike racks, 6 schools)
- Hamlin Middle School Replacement



# Evaluation



- 9 schools collecting transportation data



School Bicycle Parking Assessment

Report produced by Shane MacFhionn and Emma Newman

SafeRoutes  
Eugene-Springfield Safe Routes to School

sportworks®

Safe Routes to School National Partnership



# Evaluation

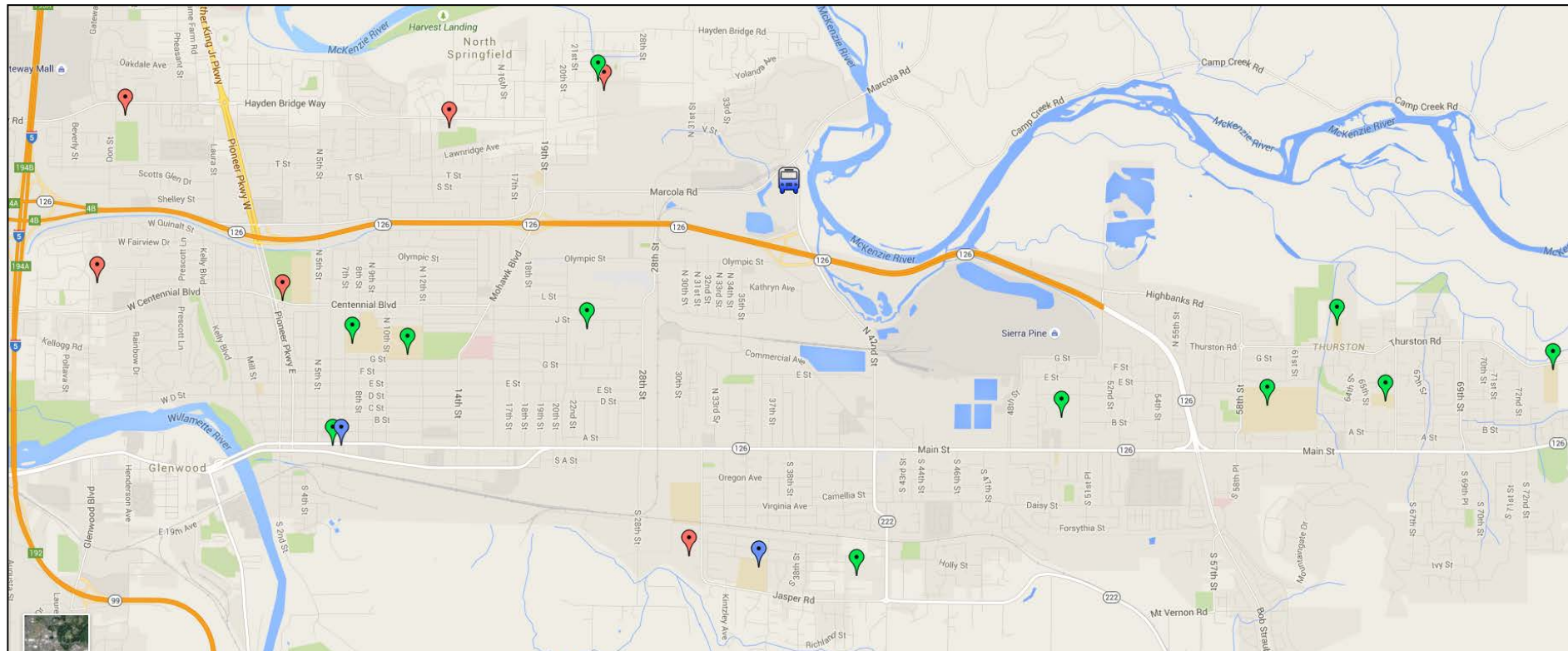
- In the first 2 years...

Red – Action Plan

Green – Some SRTS Activity

Blue – No SRTS Activity

- 6 Action Plans Complete
- 91% of schools currently have SRTS activities



# Funding

- Additional Grant Funding Obtained (>\$22,000)
  - Jane Higdon Bike Fund
  - Alliance for Healthy Families collaborative grants
  - Education Foundation Pedestrian Safety Education
  - SELCO Educator Minigrant for bike fleet helmets

- Community support
  - Disaster Relief Trials
  - GEARs Ride
  - Restaurant fundraisers
  - Haggen Donation



# Goals

- Fund/implement infrastructure improvements
  - Walk+Bike network: sidewalks, path connectors, flashing crosswalks, improved bike parking
- Expand pedestrian safety to all 12 ES, maintain bike safety at all 4 MS in district
- Reach at least 75% Walk+Bike event participation across Springfield
- Increase support for school crossing guards



Emma Newman

Springfield Safe Routes to School Coordinator

[emma.newman@springfield.k12.or.us](mailto:emma.newman@springfield.k12.or.us)



Web: [eugenefieldsrts.org](http://eugenefieldsrts.org)

Twitter: [@SpringfieldSRTS](https://twitter.com/SpringfieldSRTS)

E-news: [bit.ly/SRTSnews](http://bit.ly/SRTSnews)