

The Portland Bureau of Transportation's **Safe Routes to School** program



WE KEEP PORTLAND MOVING.



CITY OF
PORTLAND
BUREAU OF
TRANSPORTATION

Our schools were built when kids walked



Ainsworth Elementary School
Built 1914

Our roads have changed



Vestal Elementary School
NE 82nd Ave and Davis St.

Our infrastructure is lacking



Mill Park Elementary School
SE 117th and Stephens



Our Mission

Portland Safe Routes to School is a partnership of the City of Portland, schools, neighborhoods, community organizations and agencies that advocates for and implements programs that make walking and biking around our neighborhoods and schools fun, easy, safe and healthy for all students and families while reducing our reliance on cars.

Education

2nd Grade - Pedestrian Safety



4th & 5th Grades - Bicycle Safety

Encouragement

Walking School Buses, Bike Trains and more...



Enforcement



Engineering

----- BEFORE -----



----- AFTER -----

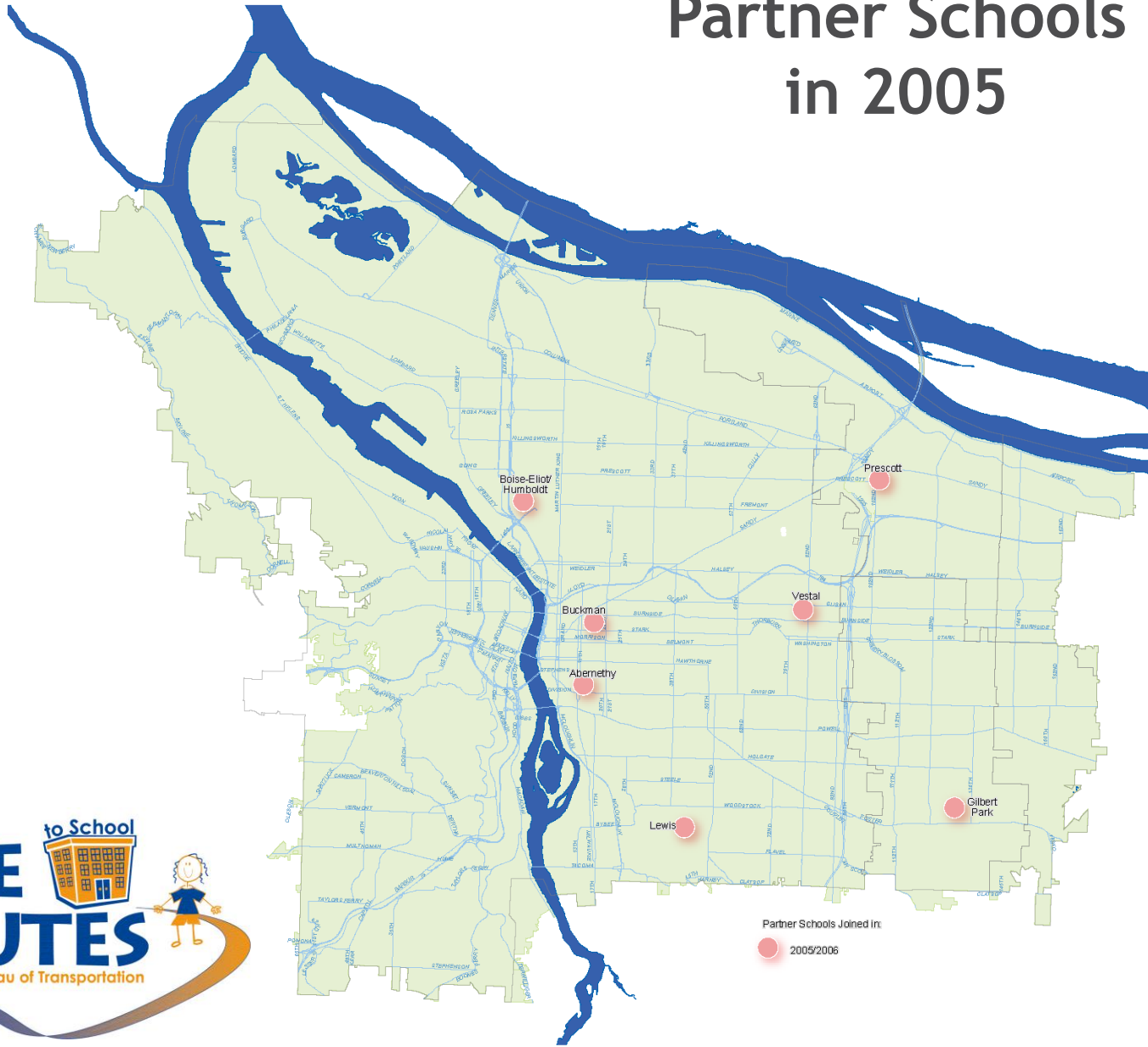


Sidewalk
Prescott Elementary

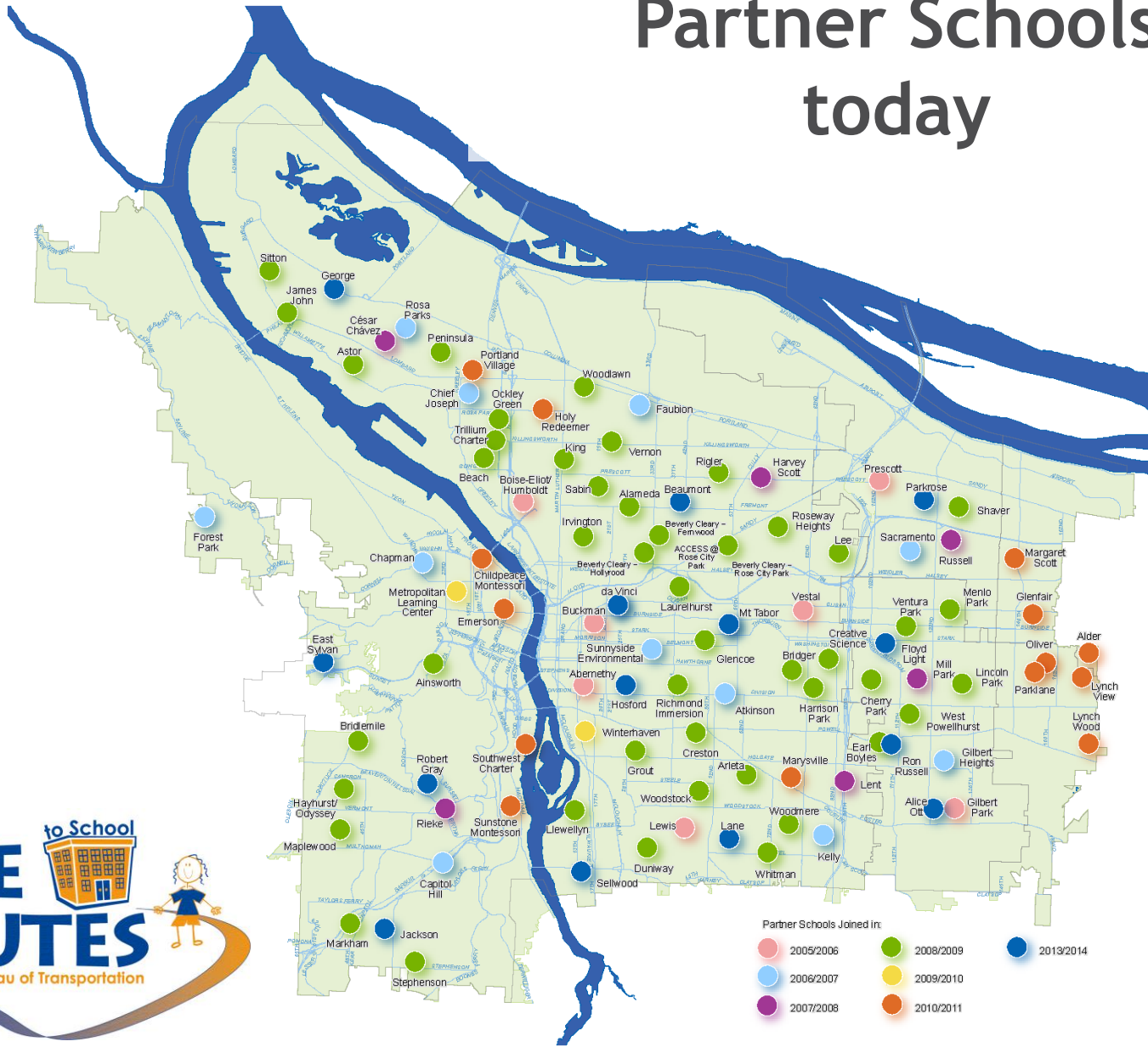
Rapid Flashing Beacon
Ventura Park Elementary

Sidewalk & Marked Crossing
Capitol Hill Elementary

Partner Schools in 2005

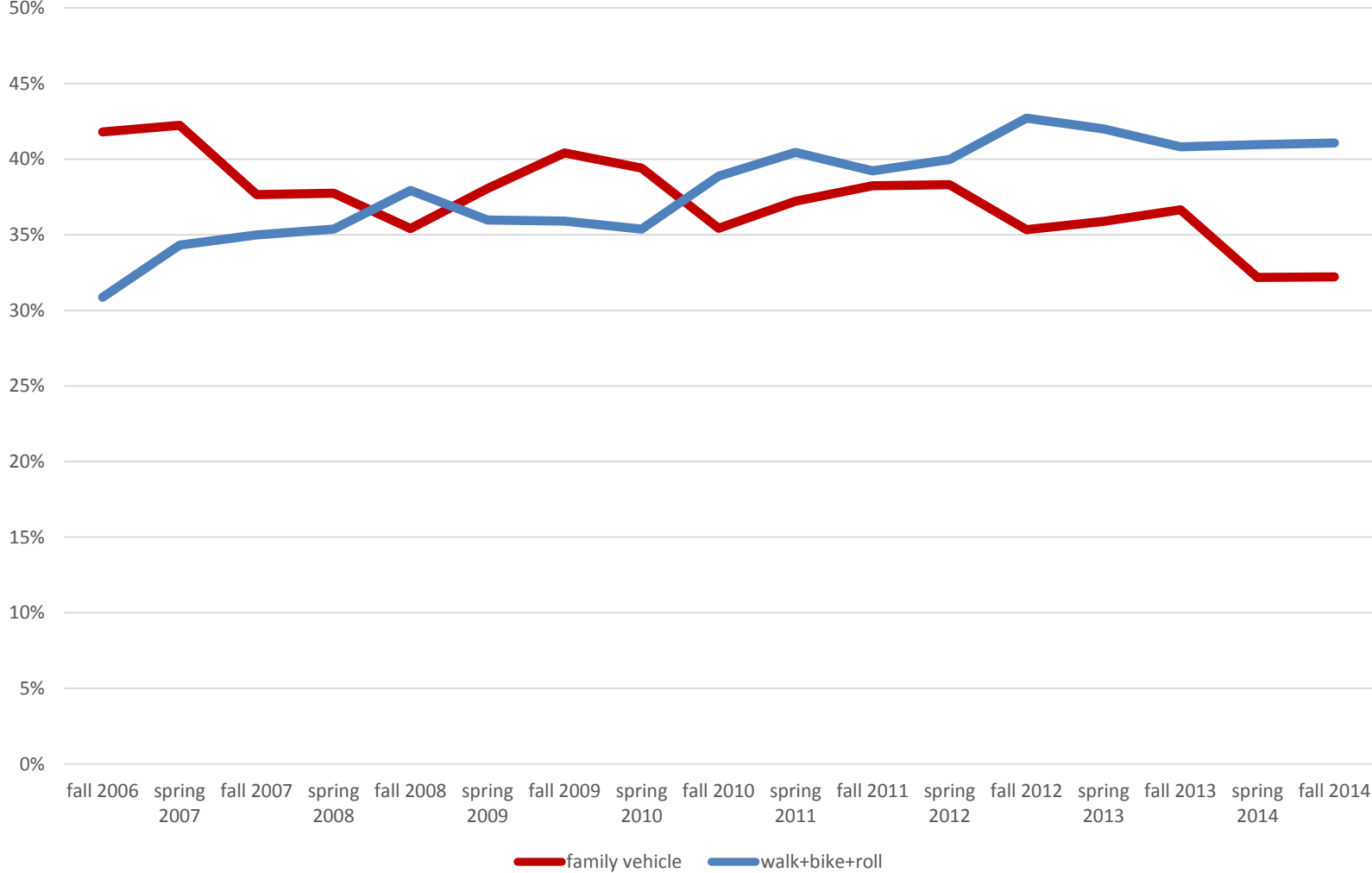


Partner Schools today



Evaluation

Safe Routes to School K-8 mode share
fall 2006 - fall 2014



Safe Routes to School

at the Portland Bureau of Transportation



Gabriel Graff, gabriel.graff@portlandoregon.gov, 503-823-5291